

4C

BIGGEST BLAME FOOL (PART 4)

ALL (except H. & G.): (interrupting)

1 **WOMEN:**

Big-gest blame fool in the Jun-gle of Nool! He's the worst we e-ver saw!

MEN:

Big-gest blame fool in the Jun-gle of Nool! He's the worst we e-ver saw!

BIRD GIRLS:

Tel-lin' lies, ma-kin' jokes. Bro-ther, + YERTLE: (Y.)

WICKS:

It's an e-le-phant hoax! Bro-ther,

(BIRD GIRLS:)

that's a-gainst the law!

(WICKS. + YERTLE:)

that's a-gainst the law!

BIRD GIRLS + SOUR KANGAROO:

Brea-kin' the peace, cre-

NGAROO:

SOUR KANGAROO:

11 12

a fuss! Some - bo - dy's think - in' dif - frent than us!

(RTLE:)

a fuss!

14 15 *div.*

blame fool In the Jun - gle of Nool, Nool, — Nool!

only on bottom note)

blame fool In the Jun - gle of Nool, Nool, — Nool!

17 18 *div.* *unis.*

the Jun - gle of Nool, Nool, — Nool! In the Jun - gle of

the Jun - gle of Nool, Nool, — Nool! In the Jun - gle of

SOUR KANGAROO:

20 21 22 *(riffs)*

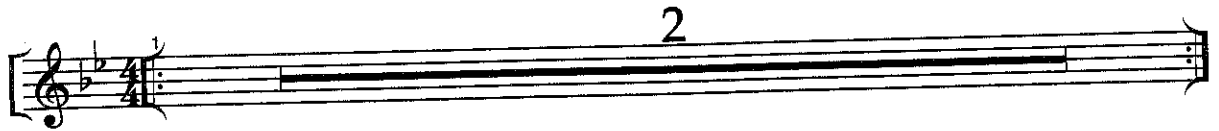
3 3 3

Nool, — Nool, — Nool, —

l, — Nool!

4D

BIGGEST BLAME PLAYOFF / GERTRUDE MCFUZZ



3 **SOUR KANGAROO + CITIZENS OF THE JUNGLE:**
mf

Who! Who - wah - dah! Who - who - who - wah - dah - dah - dah!

(S.K. + CITIZENS:)

Who! Who - wah - dah! Who - who - who - wah - dah - dah - dah!

WICKERSHAM BROTHERS:

Bet - ter look out! Bet - ter look out, Hor - ton!

(S.K. + CITIZENS:)

Who! Who - wah - dah! Who - who - who - wah - dah - dah - dah!

(WICKS:) WICK 1:

Bet - ter look out! Or some - one's gon - na get your clo - ver!

(S.K. + CITIZENS:)

9 10

Who! Who - wah - dah! Who - who - who - wah - dah - dah - dah!

(WICK 1:) (riff down off note)

WICKS 2 & 3:

Bet - ter look out! Bet - ter look out, Hor - ton!

(S.K. + CITIZENS:)

12A 12B *mf* GERTRUDE:

Who! Who - wah - dah! Who - who! On the

(WICK 1:)

Bet - ter look out! Bet - ter look out!

(WICKS 2 & 3:)

Bet - ter look out! Bet - ter look out!

13

(GERTRUDE:)

14 15

fif - teenth of May, Miss Ger - trude Mc - Fuzz

#4D - Biggest Blame Playoff / Gertrude McFuzz

(GERTRUDE:)

16 17 18

dis - co - vered how tru - ly u - nique

19 20 21

Hor - ton was... But she knew to ap - proach

22 23 24

- him would pro - ba - bly fail 'cause who'd

25 26 27

no - tice a bird with a one fea - ther

A Tempo

(GERTRUDE exits. HORTON is alone with the speck. HE listens closely.)

28 29 30

tail?...

31 32 33 34

MAYOR:

Help!... Help!...

V.S.

#4D - Biggest Blame Playoff / Gertrude McFuzz

5 HERE ON WHO (PART 1)

ly u - nique

to ap - proach

'cause who'd

fea - ther

ook. HE listens closely.)

V.S.

5

HORTON: Who are you?

3

MAYOR:

8

Well...

We're

9

Whos

here.

We

are

Whos

here,

11

smal - ler than

the eye

can

see.

It's

13

true,

sir.

We're

who's

who,

sir.

15

(MAYOR:)

I'm a Who

and so

is

she.

16

MRS. MAYOR:

We're

We're

(MRS. MAYOR:)

17 18

ti - ny lit - tle peo - ple blow - ing by in the air, —

(MAYOR:)

ti - ny lit - tle peo - ple blow - ing by in the air, —

19 20

won - der - ing how — and why —

won - der - ing how — and why —

21 22

we're on — Who, the ti ni - est

we're on — Who, the ti ni - est

23 24

pla - net in the — sky. —

pla - net in the — sky. —

#5 - Here on Who (Part 1)

25

WHOS:

A - la - de - la - de - la - de - la! ————— Who! Who!

27

2 SOPRANOS:

A - la - de - la - de - la - de - la! ————— Who! Who!

WHOS:

29

A - la - de - la - de - la - de - la! ————— Who! Who!

31

A - la - de - la - de - la... ————— We're —————

33

Whos ————— here, ————— win ————— or ————— lose here,

ni - est

Whos here, win or lose here,

strug - g - ling to stay a - live. ————— Each

ni - est

gust pro - pels ————— our ————— dust. Oh,

how the heck do Whos sur - vive? ————— At

#5 - Here on Who (Part 1)

WOMEN: ⁴¹ a - ny gi - ven mo - ment we could ⁴² crash or be drowned,

MEN: ⁴¹ a - ny gi - ven mo - ment we could ⁴² crash or be drowned,

div. unis. div.

⁴³ *div.* hit - ting the ground, — oh my! *unis.* ⁴⁴ *div.*

hit - ting the ground, — oh my!

⁴⁵ Here on — Who, the ti ni - est *unis.* ⁴⁶

Here on — Who, the ti ni - est *unis.*

⁴⁷ *div.* pla - net in the — sky. ⁴⁸

pla - net in the — sky.

#5 - Here on Who (Part 1)

49

50

MAYOR:

51

I'm the ma - yor.

"Caliopé" (with air)

(WOMEN:)

Who!

Who!

Who!

Who!

(MEN:)

Who!

Who!

Who! —

Who!

52

MRS. MAYOR:

53

I'm his wife.

(WOMEN:)

Who!

Who!

(MEN:)

Who! —

Who!

MAYOR + MRS. MAYOR:

54

55

56

Just i - ma - gine the Whos' un - u - su - al life:

#5 - Here on Who (Part 1)

FIRST WHO FAMILY:

57 58

Pic - ture the ti - ni - est hous - es and gro - cer - y stores.—

WHO WOMEN:

59 60

slide

Who! _____

(FIRST WHO FAMILY:)

SECOND WHO FAMILY:

61 62

Ti - ny um - brel - las that drip on the ti - ni - est floors.—

THIRD WHO FAMILY:

63 64

The

(SECOND WHO FAMILY:)

WHO MEN:

slide

Who! _____

(THIRD WHO FAMILY:)

65 66

ti - ni - est tun - nels and ti - ni - est streets,

#5 - Here on Who (Part 1)

67

69

71

5th Wh
W
d
5th Wh
M

73

FOURTH WHO FAMILY:

min - ia - ture bus - ses with min - ia - ture seats,

FIFTH WHO FAMILY:

min - ia - ture buil - dings with min - ia - ture win - dows and

HORTON:

No smal - ler town than — yours!

5th Who Family

WOMEN:

doors!

5th Who Family

MEN:

doors!

A Tempo

WHO WOMEN:

We've got a

WHO MEN:

We've got a

75 (WOMEN:) *div.*

76

mar - ching band that is small but grand. Oh, you

(MEN:) *div.*

mar - ching band that is small but grand. Oh, you

(The BAND plays on strange instruments.)

77 78 79

ought to hear them wail!

ought to hear them wail!

(they riff)

80 81 (WHO drum solo) 82 Cymbal splash

83 84 85

86 87 88 Picc.

#5 - Here on Who (Part 1)

WHO WOMEN:

89 *p* Who! Who! Who! _____ Ev - 'ry

90 *f* *unis.*

WHO MEN:

p Who! Who! Who! _____ Ev - 'ry

f *unis.*

91 *div.* Christ - mas time _____ with - out fail, Mis - ter

92 *div.*

div. Christ - mas time _____ with - out fail, Mis - ter

93 Grinch pre - sents his Christ - mas tale!

94

Grinch pre - sents his Christ - mas tale! I

GRINCH:

95 **(GRINCH:)** re - en - act my Christ - mas tale!

96 *poco rit.*

GRINCH: "Every Who down in Whoville liked Christmas a lot... But the Grinch, who lived just north of Whoville..." (MUSIC OUT)

GRINCH: (con't) "did NOT!"

97 *rit.* 98 *rit.* 12/8

V.S. SEGUE AS ONE