

# Hunters Creek Elementary School Replacement School PAT Meeting #1 – 01.23.19

- Introductions
- PAT Charge & Process
- Overview of SBISD Goals
- Project Schedule
- Site/Regulatory Restrictions
- Educational Specifications
- Survey Findings
- Image Exercise
- Next Steps & Questions



# Hunters Creek Elementary School

## SBISD Planning & Construction

- Travis Stanford, Director of Planning & Construction
- Kris Drosche, Senior Project Manager
- Noel Moreno, Project Manager
- Matisia Hollingsworth, Project Manager
- Other SBISD representatives



# Hunters Creek Elementary School

## Pfluger Architects

- Michelle Dudley, Partner
- Michael Martinez, Principal, Senior Project Manager
- Jonathan Sharp, Project Architect
- Tony Plascencia, Lead Designer
- Rawa Rassam, Interior Designer
- Deborah Yocham, Educational Consultant



# Hunters Creek Elementary School

## PAT Participants

- HCE Staff
- HCE Parents
- Community Representative
- Business Representative
- Principal
- Assistant Principal
- PTA President
- HOA's surrounding HCE
- Hunters Creek Village Representative



# Hunters Creek Elementary School

## PAT Charge

The goal of the PAT is to ensure that parents, staff and community members have the opportunity to take part in the planning and design of the new school.

The PAT members will serve as communicators to and from the community during the schematic design and design development phases of the project and participate in discussions that will lead to recommendations. The PAT concludes its work once construction begins.

All recommendations must be in alignment with the District's Educational Specifications and Design and Construction Standards.



# Hunters Creek Elementary School

## PAT Charge (continued)

The PAT will **reach a proposed recommendation through consensus**.

Any concerns identified by the PAT members should immediately be brought to the attention of the SBISD Project Manager.

These **recommendations will be presented** by the project's architects:

1. to the **Superintendent of Schools**, and based on approval from the Superintendent,
2. to the **Board of Trustees** for their approval.

**The Board of Trustees may act upon the recommendations developed with PAT input by approving, amending, altering or not approving all or any part of the recommendations.**



# Hunters Creek PAT Engagement Process



# Hunters Creek PAT Engagement Process





# Hunters Creek Elementary School

## SBISD Strategic Plan

The overarching theme is *personalization*. “How should facilities in SBISD encourage and promote personalized learning?” An environment can serve as a conduit for educators to **inspire, motivate, and encourage students toward success**. As SBISD works to personalize the learning experience for students, the four strategic themes include:

- The Learning Ecosystem: rapidly evolving, increasingly digital world
- Extraordinary People: care and development is central to success
- Customized Support: how the system supports personalized resources
- Resilient Foundation: maximum organizational effectiveness



Go to: <https://www.springbranchisd.com/>

**pfluger**

## Facility Findings fall into four themes:

- Facilities should be designed to allow spaces to be **customized based on the needs** of the students. When at all possible, spaces should be **flexible, modifiable and sustainable**.
- Spaces should be a source of **inspiration** for students and staff. Spaces that inspire are designed thoughtfully through the use of windows, lighting, alcoves, and other design elements.
- The opportunity for students to **collaborate** should be present in all spaces, and the transition from whole group instruction to opportunities for small group **collaboration should be easy and seamless**.
- Facilities must be designed with the future in mind. Thinking that a building lasts 50 years. While we don't know what the future holds, we do know that a building that **maximizes flexibility and minimizes standardization** will almost assuredly be necessary.



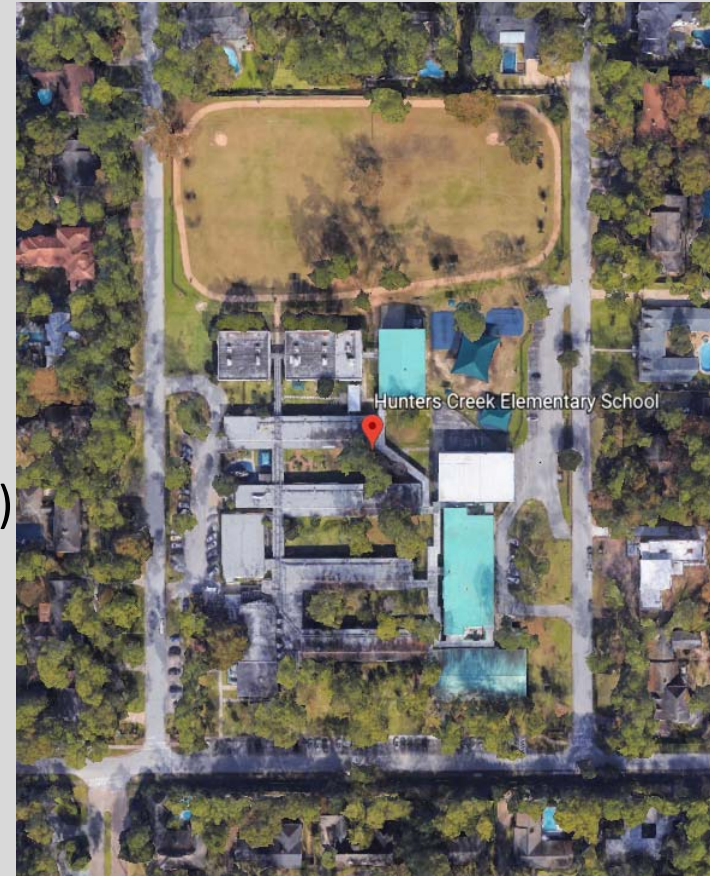
# Hunters Creek Elementary School Project Schedule

Jan 2019	Begin Design Process
Jan 2020	HCE Opens at South Transition Campus
April 2020	Begin Construction
July 2021	Construction Complete
August 2021	New School Opens



# Hunters Creek Elementary School Site Requirements

- Property line setbacks ( 25' front, 10' sides & back)
- Height limitation (35' max)
- Parking Spaces (90 staff, 20 visitor, 5 service/delivery)
- Drop-off/Pick-up(canopy & queuing for students & bus)
- Outdoor Play (pavilion, track, fields, playgrounds)
- Service Yard (access to kitchen and central plant)
- Maintain as many existing trees as possible



# Hunters Creek Elementary School

SBISD Educational Specifications: 700 student campus

- Administration (guidance/counseling + clinic)
- Media Center
- Instruction: Core Content (classrooms + support)
- Special Education (life skills, resource + support)
- Special Programs (music, art, science)
- Physical Education
- Student Activity / Commons (food service + dining)
- Building Support
- Site Requirements
- Safety / Security
- Technology



**pfluger**

# Hunters Creek Elementary School

## Staff Survey Feedback

### What makes HCES unique?

- Students/Children
- Community/Parental Involvement
- Staff/Administration
- Families
- High Expectations
- Supportive Environment
- Tough Mind Tender Heart
- Outdoors
- Culture
- Feel



## HCE Staff Survey Feedback

# What do you think are your schools three most outstanding physical features? What works best?

- Access to outdoors/hallways
- Courtyards/gardens
- Connecting classrooms
- Organized by grade levels
- Windows/lots of natural light
- Beautiful trees
- Memorials
- Playgrounds/play fields
- Neighborhood
- Spacious classrooms/storage
- Community access



## How should facilities encourage and promote personalized learning?

- Flexibility/adaptability
- Collaborative spaces
- Technology that supports learners/more options
- Open spaces/flexible spaces
- Large gathering areas
- Room for action-based learning
- Smart boards in all learning areas
- Excellent Wi-Fi capabilities all over the school
- Flexible classrooms for varied learning styles
- Furniture to support flexible seating/provides choice



## What makes a physical space inspiring to you?

- Open spaces/openness that allows for movement
- Natural light/bright spaces
- Warm and inviting colors
- Flexible spaces/no built-ins
- Access to outdoor environments
- Uncluttered/organized/clean
- Variety of seating options
- Sound control
- Mixture of soft and hard spaces

## What concerns do you have for the new school?

- Maintain its charm/still feels like a home/unique
- Spacious classrooms
- Adequate parking
- Make the moving process easy
- Access to outdoor spaces
- Safety/security
- Growth/space requirements
- Enough storage/organizational requirements
- Circulation and drives
- Compliment the neighborhood look and feel

# Hunters Creek Elementary School

## Image Exercise

- Learning
  - Commons
  - Media
  - Exterior
  - Entrances
  - Outdoor
- Place one red dot on your favorite image in each category
  - Place one blue dot on your second favorite image in each category

# Hunters Creek Elementary School

## Next Steps

PAT Meeting Schedule: all meetings are at 3:15pm at HCE

■ <b>Meeting #2</b>	<b>January 30, 2019</b>	<b>Design Concept Charrette</b>
■ Meeting #3	February 6, 2019	Exterior Massing / Concept Review
■ Meeting #4	February 20, 2019	Final Design Concept Presentation
■ Meeting #5	March 20, 2019	Schematic Progress Update
■ Meeting #6	May 15, 2019	Design Development Update
■ Meeting #7	August 14, 2019	Construction Documents Update
■ Meeting #8	November 6, 2019	Final Review Presentation



## QUESTIONS?

**pfluger**