

Senior Parent Night

September 11, 2018

**Lyme-Old Lyme High School
School Counseling Department**

Colleen Rodriguez

Jo Williams

Tracy Lenz

Glynis Houde- Administrative Assistant

Tonight's Agenda

- ❖ Graduation Requirement Review
- ❖ School-to-Career Opportunities for Seniors
- ❖ College Admissions Criteria
- ❖ Application Process & Procedures
 - * Student Responsibilities
 - * School's Responsibilities
 - * Forms! Forms! Forms!
 - * Deadlines
- ❖ How to Ease the Stress
- ❖ Naviance
- ❖ NCAA Clearinghouse
- ❖ Financial Aid Night
- ❖ Questions

Graduation Requirements

Status letters sent home in July

Students need 23 credits to graduate:

English	4 credits
Math	3 credits
Social Studies	3 credits
Civics	.5 credit
US History	1.0 credit
Science	3 credits
Vocational/ Fine Arts	1 credit
PE	2 credits

Attain Proficiency on CAPT Science &
SAT Test: EBRW: 480 & Math 530



School To Career Opportunities

Elizabeth Shoudy, Transition Coordinator

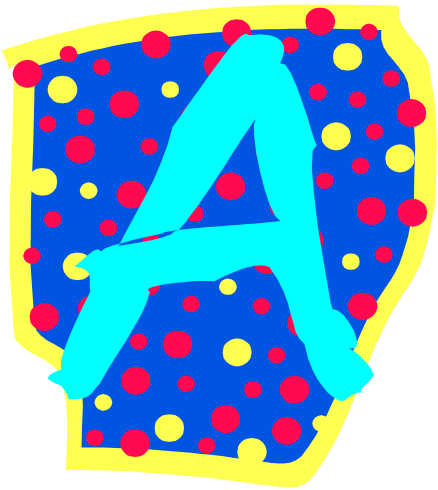
- ❖ Job Shadow: Spend the day with a professional in a career field of interest. You will receive .25 credit for this activity.
- ❖ School To Career Exploration/Field: receive HS credit for having a job.
- ❖ ASVAB: October 18th 7:40 am at LOLHS

Colleges' Top Ten List

What they are looking for...

- * Ability to master a challenging curriculum
- * Grades that represent strong effort and an upward trend
- * Solid scores on Standardized Tests: SAT/ACT/SAT Subject Tests
- * "Passionate Involvement" in a few select activities
- * High quality community service activities
- * Work or out of school experience
- * A well written essay
- * Teacher recommendations that describe special characteristics
- * Supplementary rec. from adults who have had significant contact with the student
- * Anything special that makes the student stand out

Transcript & GPA



- Transcript is the most important piece of the college admission requirements.
- Official academic record
- It shows the final grades of classes you have taken from grade 9 - 11 & work in progress.
- Cumulative, weighted GPA
- WE DO NOT RANK.

College Admissions Testing Dates and Deadlines

SAT & SAT Subject Test

TEST DATE	REGISTER BY
10/6/18	9/26/18*
11/3/18	10/5/18
12/1/18	11/2/18

REGISTER AT:

WWW.COLLEGEBOARD.ORG

ACT

TEST DATE	REGISTER BY
10/27/18	9/28/18
12/8/18	11/2/18
2/9/19	1/11/19

REGISTER AT:

WWW.ACTSTUDENT.ORG

**Remember to send SAT, SAT Subject and ACT Test Scores
to the colleges!!!!!!**

www.collegeboard.org

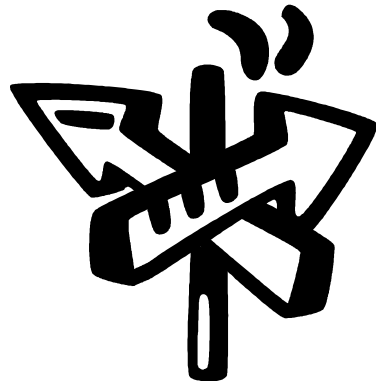
- **Register for the SAT & SAT Subject Tests**
- * **test preparation information, practice tests and**
- * **ability to send scores**
- * **AP Test Information**
- * **College Search Engine**
- * **Individual College Information**
- * **Financial Aid Information**
- * **Apply for the CSS Profile**

Should I take the ACT?

www.actstudent.org

- ❖ **ACT not as vocabulary intensive**
- ❖ **Entirely multiple choice - no fill-ins**
- ❖ **Can use a calculator for entire math section**
- ❖ **Math includes more Geometry.**
- ❖ **Includes a science section**
- ❖ **Receive 4 separate scores plus a composite score averaging the four tests.**
- ❖ **Scale is 1 - 36.**
- ❖ **As widely accepted by colleges as the SAT**

The Road to College is paved
with organization



Where are you in the process?

- * Students are all at different stages in the process:
 - * Have not done a search yet
 - * Have a list of schools they are interested in but have not yet visited
 - * Have visited a few school but not sure if the schools are likely, match or reach schools
 - * Know all the schools applying to and have begun the Common Application
 - * Have completed the application and ready to submit it

Important Points to Keep in Mind When Choosing Colleges

- * There is no absolute when it comes to applying to a range of colleges. The goal of course, is to be admitted to one college of your choice.
- * Most students will apply to one or two schools in the “Reach” category, two or three in the “Match” category, and at least two in the “Likely” category.
- * The definition of each category varies based on the individual student. What may be a “Likely” school for one student may well be someone’s “reach” school.
- * Give as much thought to your Match and Likely schools as your Reach schools.
- * Apply only to schools where you believe you would be happy for 4 years, even for “Likely” schools.

Remember, you are looking for the best match for you!

Understanding Admissions Procedures

Rolling Admissions: Applications are reviewed on a continual basis and a decision is made when all information has been received.

Early Decision - Binding: An application plan where a student makes a commitment to attend a college if accepted. Apply by Nov. 1, decision rendered by Jan. 1.

Early Decision II

Early Action: A form of early application which also requires credentials be submitted early; however, students are not committed to enroll.

Early Action II

Early Action Single Choice/Restricted Early Action: A non-commitment enrollment option but a student is only allowed to apply to one college under this option. The expectation is that the student doesn't apply to any other schools early.

Early Notification: This concept is similar to early action, but requires a deposit from the accepted candidate.

Regular Admissions: The deadline for submission of applications ranges from January 1 - April 1. Applicants are notified by April 15 and must reply to the college by about May 1.

School Counseling Department Forms!

- * Purple Parent Brag Sheet
- * Pink Educational Records Release Form
- * Green Counselor Recommendation Information Form
- * Resume
- * 1st quarter grades will be sent automatically to all schools
 - * Form will be available to stop 1st quarter grades from going out.
 - * Caution: if a school requires the 1st quarter grades, they will need to be sent in order to complete the application.
 - * Not sending them could jeopardize the application.

All necessary forms have been distributed to WCRW students and are available on the LOLHS Website

Application Process: *Organization is Key!!*



Student Responsibilities:

- * Personally ask teachers to write letters of recommendation and request them through Naviance.
 - * Give teachers Blue Recommendation Form
- * Request Transcripts through Naviance.
- * Submit all required forms to the School Counseling Department.
- * Send SAT/SAT Subject scores to the colleges through [.www.collegeboard.org](http://www.collegeboard.org)
- * Send ACT scores to the colleges through www.actstudent.org.
- * Complete and Submit application:
 - * Supplements
 - * Essays
 - * Fee
 - * Auditions
 - Portfolios
 - Interviews

MEET ALL DEADLINES

Colleges and LOLHS

- * Students must submit all the required materials to their School Counselor and Teachers at least *3 weeks prior to their first college application deadline.*
- * Please use the chart below to ascertain the date the forms MUST be submitted to your School Counselor/Teacher
- * College Application Deadline:

November 1, 2018	<u>Submit Forms By:</u> Wednesday, October 10, 2018
November 15, 2018	Wednesday, October 24, 2018
December 1, 2018	Friday, November 2, 2018
December 15, 2018	Friday, November 16, 2018
January 1, 2019	Friday, November 30, 2018 (due to holidays)
- * While we appreciate and encourage the submission of your materials in advance of the 3-week minimum, please note that we prioritize the processing of all materials including sending the transcript and the counselor letter of recommendation by the student's first application deadline.

School Responsibilities:

Teachers:

Upload and send the Teacher Written Evaluations and Forms through Naviance.

School Counseling Department:

Submit through Naviance or Mail a hard copy of:

- Transcript & Classes in Progress
- School Profile
- Secondary School Report Form
- Counselor Recommendation
- 1st Quarter Grades
- Mid Year Transcript
- Final Transcript

'What's Happening' to ease the stress?

- * Many seniors are enrolled in the 'Writing & Communication for the Real World' class.
- * Individual counselor-student meetings begin this week and will continue throughout the process.
- * Students can ask English teachers to review/edit college essays.
- * College Representative Visits occurring here at LOLHS
- * Many local College Fairs
- * Forms are on the LOLHS Website and Canvas.



Where, oh where are the College Admission Reps?

Upcoming College Fairs

- ❖ **Old Saybrook High School**
Monday, September 17
6:00-7:30pm
- ❖ **East Lyme High School**
Tuesday, October 2, 2018
6:30 – 8:00 pm
- ❖ **Ledyard High School**
Wed, October 3
6:30 – 8:00 pm
- ❖ **Guilford High School**
Thursday, October 11
6:30 - 8:00pm

Upcoming College Rep Visits

- * College Rep visits are occurring every day.
- * Students can sign up through their Naviance accounts.
- * Often times, the Admissions Rep will be the person reading their application.
- * Attending is an easy way to show interest in a school.

Naviance Student

- Naviance is an online program used to facilitate and manage the college application process.
- Naviance Student–LOLHS-specific data since 2002.
- LOLHS will submit transcripts and counselor letters of recommendation electronically using Naviance eDocs.
- Teachers will submit their recommendation letters through Naviance eDocs as well.
- Each student has a personal Naviance Account with user name and password.
- Parents also have user names and passwords.

What Can You Do on Naviance Student?

- See SAT/ACT test scores, GPA
- Request transcripts & teacher recommendations
- Complete a College Search
- Create a List of Colleges you are applying to
- Track College Deadlines
- See Scheduled College Visits & Sign up
- Search for Scholarships
- **Receive emails from the School Counseling Department**

www.connection.naviance.com/lolhs

Naviance Demonstration

<https://student.naviance.com/lolhs/>

 Naviance | Student

[Home](#) [Colleges](#) [Careers](#) [About Me](#) [My Planne](#)

Welcome, Trial!

Search for Colleges



Type a college name

SEARCH

Fall 2018

Welcome to the Naviance Student Website

This internet based College and Future Planning management system is our online connection to students and families. The Naviance Studnet program enables the School Counseling Office

My Favorites



COLLEGES

I'm thinking about



COLLEGES

I'm applying to



CAREERS AND CLUSTERS

I'm thinking about

NCAA Clearinghouse

www.eligibilitycenter.org

- For students interested in Division 1 or 2 athletics in college
- Students should check their GPA and course requirements to ensure they have what is required.
- Students need to register with the clearinghouse and request their transcript through the on-line system.
- Requires that students submit their high school transcript and SAT scores.
 - SAT scores must be sent by STUDENT, code 9999
 - Transcripts must also be requested through Naviance.
- Final Transcripts will be sent from LOLHS by end of June.
- Students should call Clearinghouse directly, 319-337-1492, with questions.



Web Resources

- * www.collegeboard.org : SAT Info, CSS Profile, AP
- * www.actstudent.org: ACT Info
- * www.fairtest.org: list SAT/ACT optional schools
- * www.commonapp.org: Common Application: all students must create an account!
- * www.fafsa.ed.gov: Free Application for Federal Student Aid.
- * www.BLS.gov : Career Search/Statistics

Financial Aid Preview

- * ED/EA often prompts earlier dates for Financial Aid information to be filed: two forms
- * CSS Profile: access it through www.collegeboard.org
- * FAFSA: is available as of October 1, 2018 and will use your 2017 tax information. This is good news.
Access it through www.fafsa.ed.gov
- * Investigate all financial aid deadlines and requirements as you proceed through this process
- * Begin paying attention to Merit Scholarships available through the colleges
- * Be proactive and look at the LOLHS Scholarship Bulletin as well as on Naviance as the list is longer and sortable.

Financial Aid Night

Tuesday, September 25, 2018

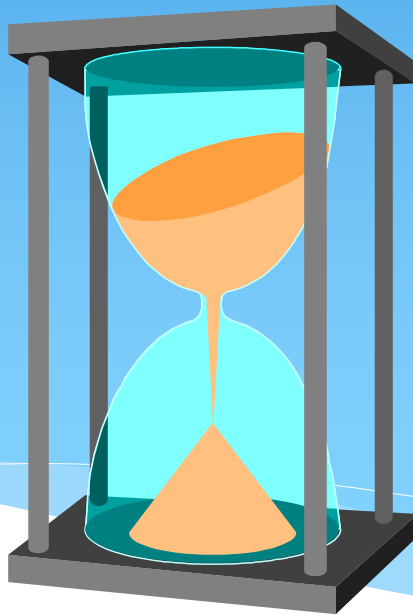
6:30 pm

in the Media Center

**Jessica Hatfield
Connecticut College
Financial Aid Office**



Questions/Comments:



Senior Parent Night Evaluation

- * Please take the time to complete the evaluation of tonight's event.
- * Your input is very helpful as we plan for future events both for you and the future Seniors and their parents.
- * Thanks for your Help and Support!!