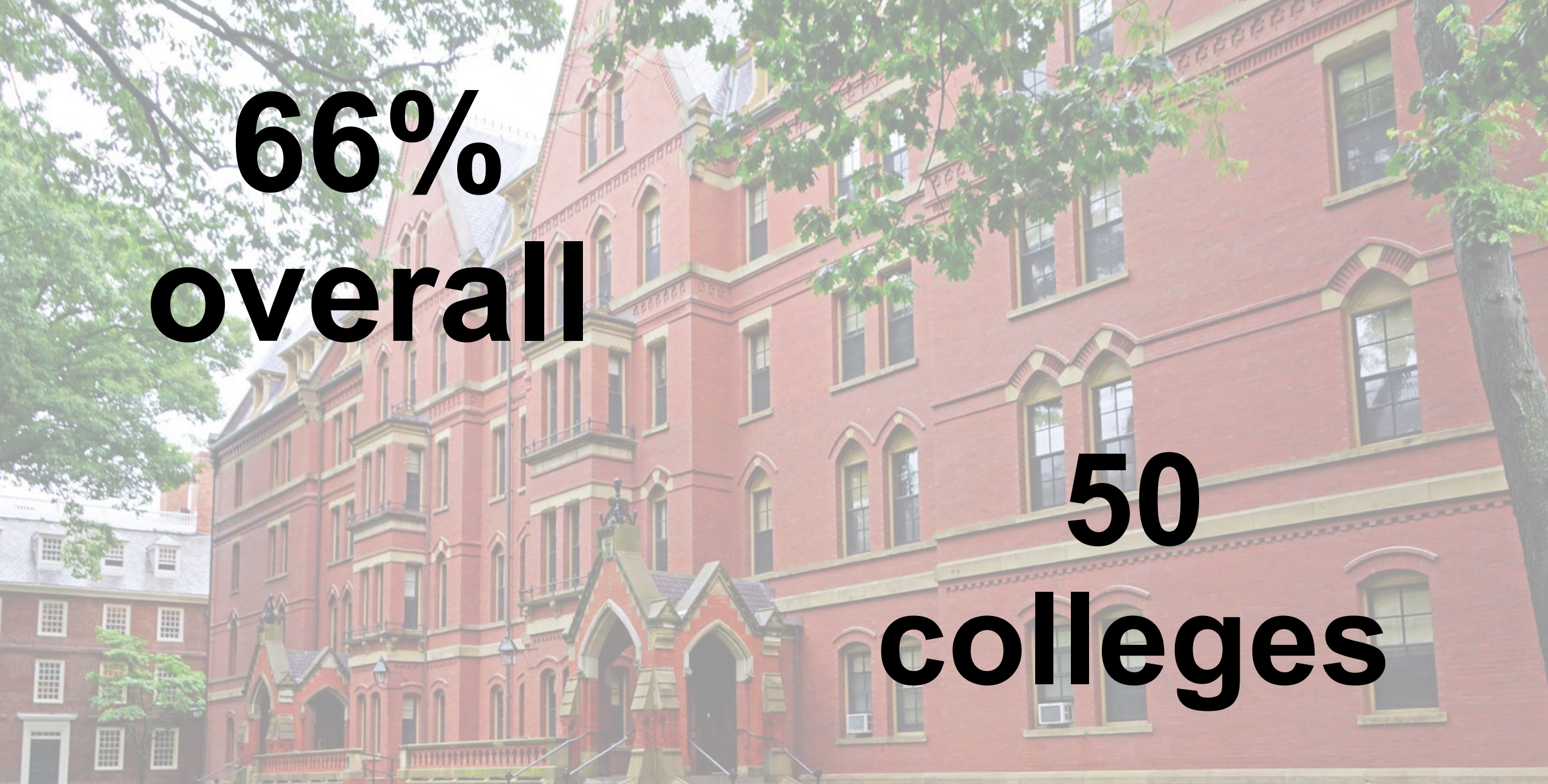


Admissions Process at Highly Selective Colleges

Frances Carhart
Dean of Student Academic Services



66%
overall

50
colleges

Under 10%

- Harvard
- Stanford
- Yale
- Princeton
- MIT
- U Chicago

Under 20%

- Dartmouth
- Duke
- Pomona
- Rice
- Tufts
- Vanderbilt

Under 30%

- Colgate
- Emory
- Tulane
- U Michigan
- Wellesley
- Vassar

Reality of Highly Selective College Admissions

- 90% have a 4.0 GPA
- Most rigorous load and then some
- Over 50% have near perfect or perfect scores
- Over 50% hold president/leader positions
- Over 30% nationally ranked

Highly Selective College Criteria

- Grades, Rigor and Breadth
- Standardized Test Scores
- Extracurricular Activities
- Essays
- Letters of Recommendation
- Demonstrated Interest

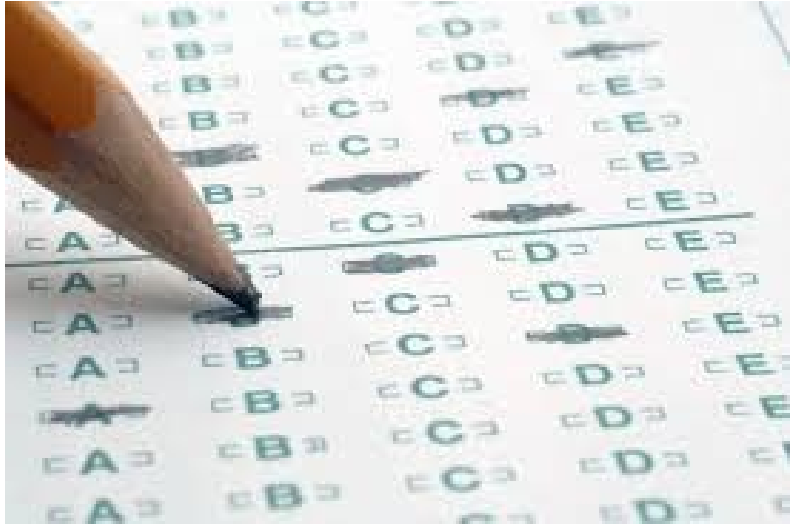
X2



Highly Selective College Criteria

- Grades, Rigor and Breadth
 - Full academic load (7.0 academic credits)
 - Maximize Bear Creek course offerings
 - Perform well in AP courses

Highly Selective College Criteria



- Standardized Test Scores
 - SAT or ACT
 - SAT Subject Tests

	SAT EBRW	SAT MATH	ACT
Colorado College	650-730	650-760	29-33
Gonzaga	590-670	590-680	26-30
OSU	540-650	530-650	22-28
Pepperdine	600-690	600-700	25-30
Rice	730-780	760-800	33-35
Santa Clara	630-710	640-730	28-32
Stanford	690-760	700-780	32-35
UW	590-690	600-730	27-32
Whitworth	550-650	540-650	23-29
Yale	710-790	710-800	32-35

Extracurricular

- Duration
- Increased skill
- Increased leadership



Highly Selective College Criteria

- Essays
- Letters of recommendation
- Demonstrated interest

Highly Selective Applicants

- Naturally love to learn
- Self-motivated
- Resilient and gritty
- “Take it up a notch” academically
- Globally aware

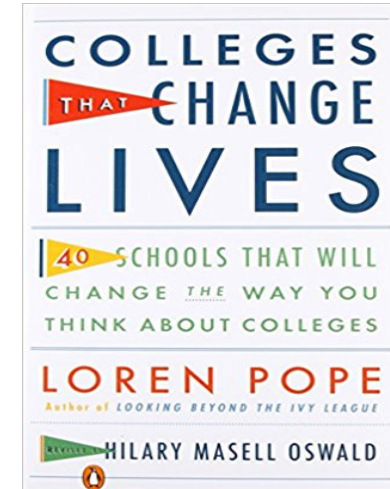
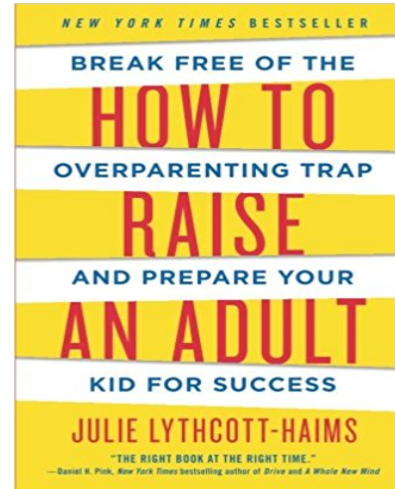
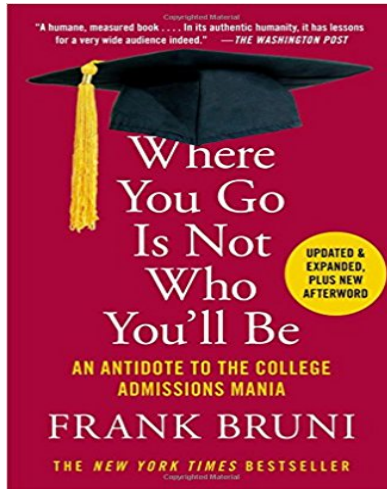
What Can You Do Now?

- Naviance
- Rigorous course load
- SAT/ACT prep
- Summers/vacations
- Visit campuses
- Attend BC college visits
- Self-advocate
- Take responsibility
- Engage in classes
- Be curious

Alternatives and Options

- Hidden gems
- Honors colleges at public universities
- CTCL (Colleges That Change Lives)
- Community college transfer

College Doesn't Define You or Predict Your Success



Admissions Process at Highly Selective Colleges

Frances Carhart
Dean of Student Academic Services