

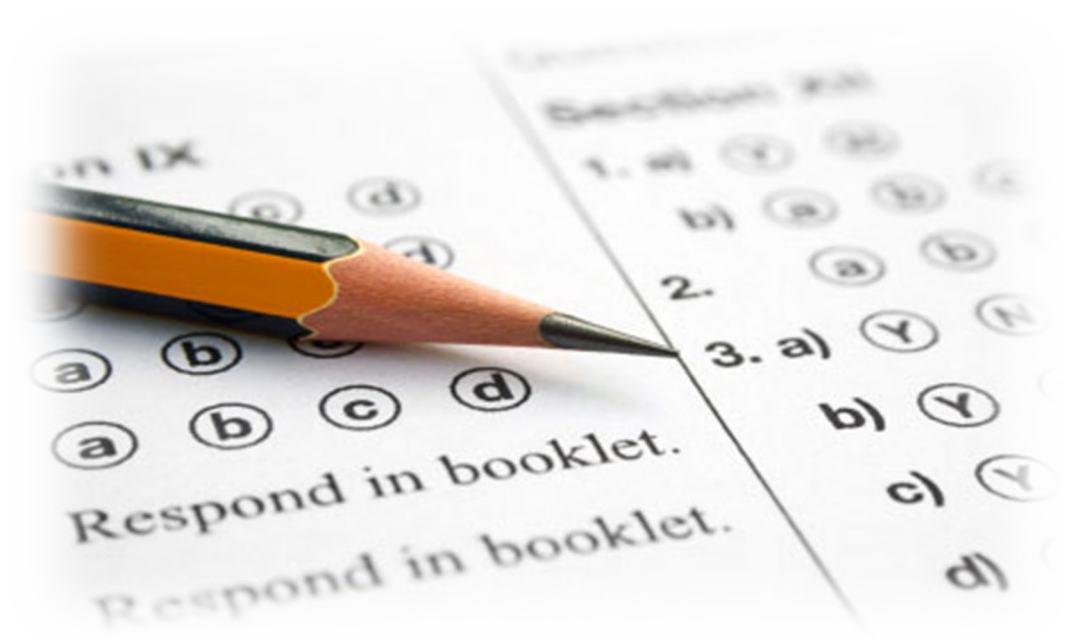
Standardized Tests Defined

Frances Carhart

Dean of Student Academic Services

Agenda

- SAT, ACT & CLT
- Tests in the Application Process
- Bear Creek Preparation



Naviance

Seniors January/February

From Ms. Carhart

Welcome back! Enjoy your last JanTerm 😊

To do list

- Mid-year transcripts are submitted in early January, after first semester grades are made final.

[Read more](#)

Important To-Dos and Tasks

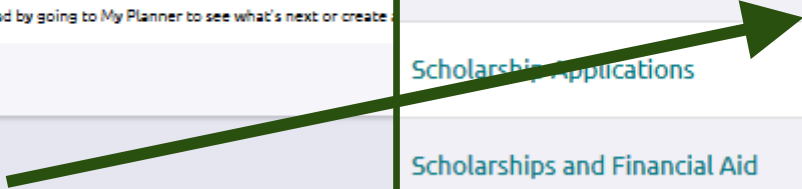
Relax, you have no overdue or upcoming to-dos and tasks. However, you can get ahead by going to My Planner to see what's next or create...

[See All in My Planner](#)

Resources to get ready

- [Document Resources](#)

College Lists By Major	📎
College Maps	📎
Essay/Writing/Thank you notes	📎
Interview	📎
SAT & ACT	📎
Scholarship Applications	-
Scholarships and Financial Aid	📎
Study Skills Resources	📎



Welcome, Bear Creek Families!

Compass Education Group is a leading provider of tutoring for college admission tests. The Bear Creek School has partnered with Compass to offer a number of helpful resources to families.

*On Wednesday, February 27th, 8:00-9:00 AM, parents and students (9-11th grade) are asked to attend a presentation by Compass' Senior Director, Matt Steiner, to learn about the use of standardized tests in the admission process, the current landscape of testing policies, and practical guidance for exam timing and preparation. Families who attend will receive a copy of *The Compass Guide to College Admission Testing*.*

In addition, students are invited to take a complimentary practice test of their choosing: ACT, SAT, or SAT Subject Test. Simply complete the practice test form below, and a Compass director will be in touch to send the test materials and explain proctoring options.

SAT, ACT & CLT

	SAT	ACT
Sections	Evidence-Based Reading and Writing (EBRW) and Math	English, Math, Reading, Science
Time	3:00	2:45
Score Range	200-800 each section	1-36 each section
Writing	Optional	Optional
Method	Paper	Paper
Colleges That Accept	All	All

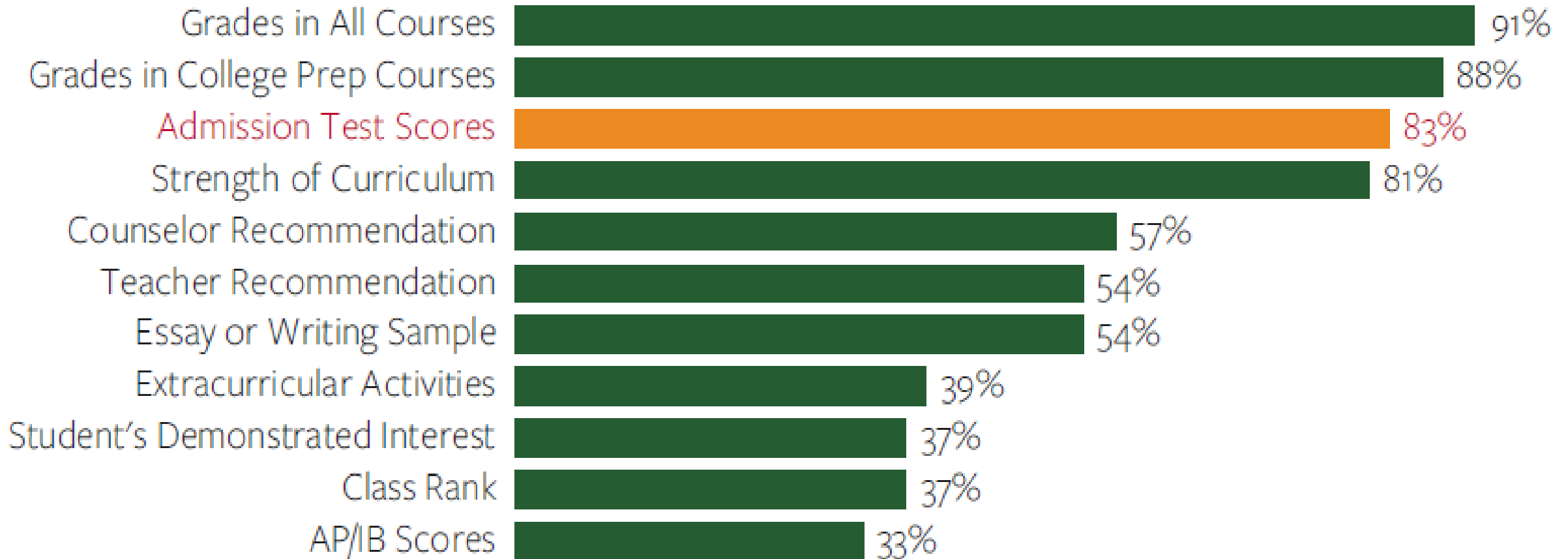
Classic Learning Test



- Passages from Great Books
- Online only
- Same day results
- 87 colleges

Tests in the Application Process

Percentage of Colleges Reporting “Considerable or Moderate Importance”



	SAT EBRW	SAT MATH	ACT
Gonzaga	590-670	590-680	26-30
OSU	540-650	530-650	22-28
Pepperdine	600-690	600-700	25-30
Santa Clara	630-710	640-730	28-32
Stanford	690-760	700-780	32-35
UW	590-690	600-730	27-32
Whitworth	550-650	540-650	23-29

Testing Terms

Test Optional

SAT/ACT Submission

- Super Score
- Score Choice
- Writing required

School	Superscore		Score Choice Policy
	SAT	ACT	
Amherst College	●	●	◐
Boston University	●	●	◐
Brown University*	●	●	□
Colorado College	●	X	□
Columbia University	●	●	□
Cornell University*	●	X	■
Dartmouth College	●	X	□
Duke University*	●	●	□
Georgetown University	●	X	■
Harvard University	●	X	□
Harvey Mudd College	●	●	◐

Bear Creek Preparation

Bear Creek Testing Opportunities

9	PSAT	First standardized practice test.
10	PSAT & PreACT	Compare results to determine which test to take official junior year.
11	PSAT (official)	Practice full-length test & opportunity to win scholarships

Bear Creek Testing Opportunities

Official SAT offered at Bear Creek

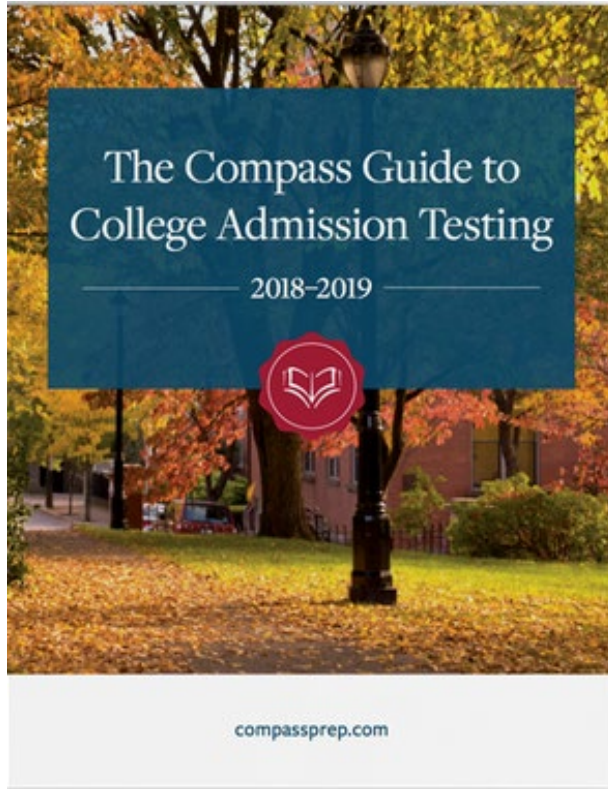
- March
- May
- June



Timing

	P/SAT Score	% of Juniors	Timing
Traditional	900-1200	50%	March – first test
Deferred	< 900	33%	May/June – first test
Early	> 1200	12%	Oct/Nov – first test

Prep Opportunities & Resources



Partnership with Compass Prep

- Free practice tests
- Online tutoring
- Compass Prep/Bear Creek landing page
- Everything Standardized Tests. Feb 27.

PrepNorthwest in Kirkland (in-class)

Standardized Tests Defined

Frances Carhart

Dean of Student Academic Services