

# THREAT ASSESSMENT AND RESPONSE PROTOCOL®

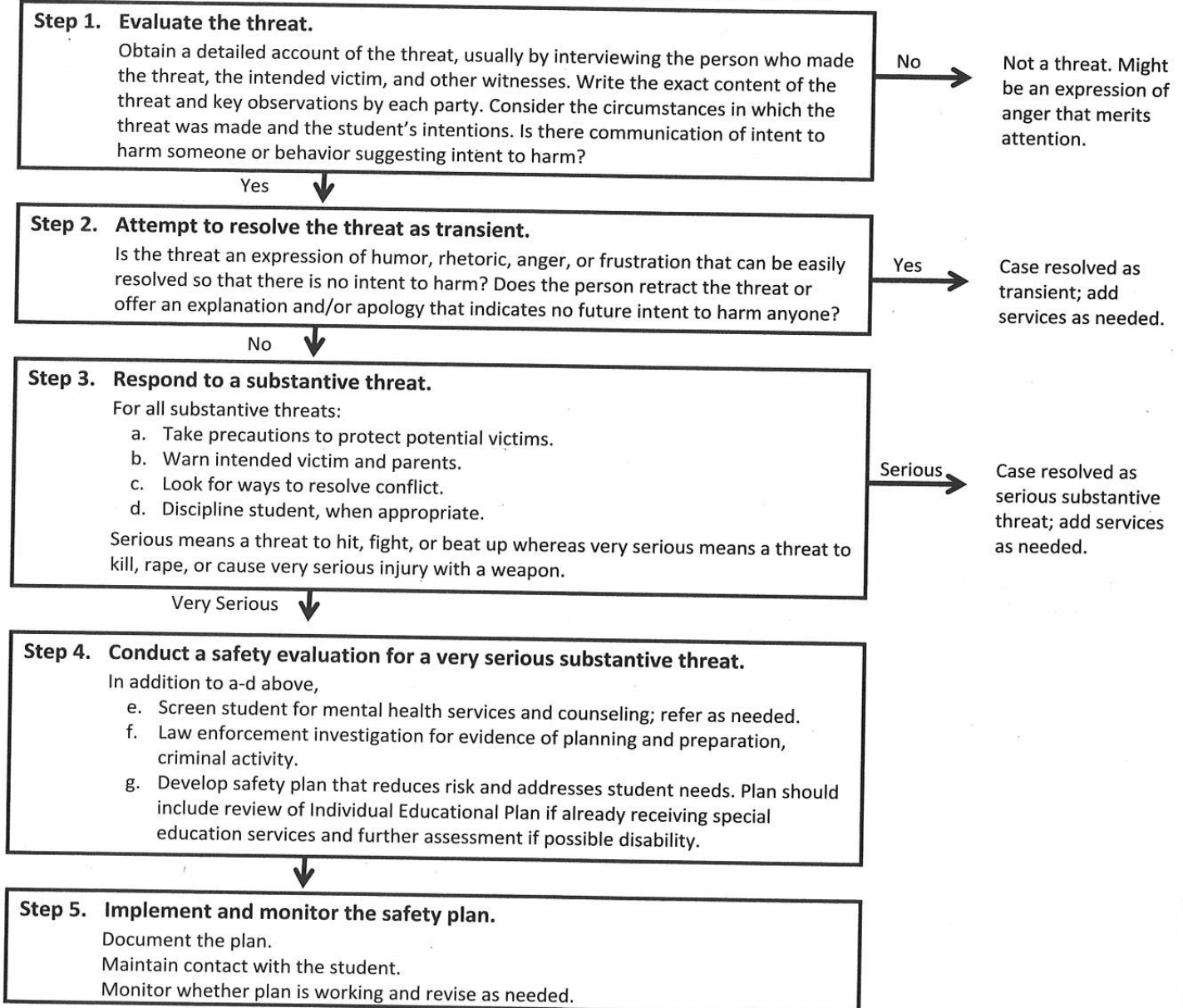
Comprehensive School Threat Assessment Guidelines

## OVERVIEW

A threat is a communication of intent to harm someone that may be spoken, written, gestured, or expressed in some other form, such as via text messaging, email, or other digital means. An expression of intent to harm someone is considered a threat regardless of whether it is communicated to the intended target(s) and regardless of whether the intended target is aware of the threat. Threats may be implied by behavior that an observer would reasonably regard as threatening, planning, or preparing to commit a violent act. When in doubt, treat the communication or behavior as a threat and conduct a threat assessment. Threats that are not easily recognized as harmless (e.g., an obvious joke that worries no one) should be reported to the school administrator or other team members. The administrator or another team member makes a preliminary determination of the seriousness of the threat. The student, targets of the threat, and other witnesses should be interviewed to obtain information using this protocol. A *transient* threat means there is no sustained intent to harm and a *substantive* threat means the intent is present (or not clear) and therefore requires protective action. This form is a guide for conducting a threat assessment, but each case may have unique features that require some modification.

A threat assessment is not a crisis response. If there is indication that violence is imminent (e.g., a person has a firearm at school or is on the way to school to attack someone), a crisis response is appropriate. Take immediate action such as calling 911 and follow the school crisis response plan.

### School Threat Assessment Decision Tree\*



\*This 5-step decision tree is a revision of the original 7-step decision tree for the Virginia Student Threat Assessment Guidelines that retains the same information and procedures in a more condensed format.