

SLO COUNTY

Table 1

TOTAL GENERAL FUND REVENUE FOR 2016-17
Including and Excluding All Other Funding Sources

RANK	DISTRICT	Revenue (excluding Other Sources) per ADA	Revenue (excluding Other Sources) Dollars	Revenue (including Beg. Bal & Other Sources) per ADA	Revenue (including Beg. Bal & Other Sources) Dollars
1	Coast Unified	19,756.49	12,127,126.84	24,310.89	14,922,756.63
2	Cayucos Elementary	17,374.28	3,510,993.93	22,114.74	4,468,947.58
3	Shandon Joint Unified	15,613.05	4,707,959.95	17,469.08	5,267,625.70
4	Pleasant Valley Jt Un Elementary	13,386.76	1,188,074.70	19,801.12	1,757,349.74
5	San Luis Coastal Unified	12,583.60	90,955,237.79	15,178.14	109,708,808.19
6	ALL UNIFIED DISTRICTS	12,389.01	47,684,684,384.45	14,670.69	56,466,725,745.00
7	San Miguel Joint Un Elementary	12,324.79	7,102,035.99	13,590.68	7,831,493.48
8	ALL ELEMENTARY DISTRICTS	11,693.23	12,611,535,051.47	14,315.39	15,439,611,959.94
9	COMPARATIVE GROUP	11,499.87	366,659,804.90	13,346.47	425,536,715.87
10	Templeton Unified	11,339.62	26,116,043.53	13,253.63	30,524,170.34
11	Paso Robles Joint Unified	11,236.50	74,107,868.55	12,222.09	80,608,109.42
12	Lucia Mar Unified	11,001.48	111,759,171.87	13,124.80	133,329,068.05
13	Atascadero Unified	10,656.90	47,212,418.59	11,746.85	52,041,143.37

UNRESTRICTED GENERAL FUND REVENUES FOR 2016-17

1	Coast Unified	17,275.43	10,604,176.21	19,123.93	11,738,840.17
2	Cayucos Elementary	13,793.04	2,787,296.85	17,308.08	3,497,617.74
3	Shandon Joint Unified	12,545.58	3,782,992.90	12,310.00	3,711,956.70
4	San Luis Coastal Unified	10,957.44	79,201,287.84	11,874.31	85,828,435.60
5	Pleasant Valley Jt Un Elementary	10,771.64	955,983.39	15,572.66	1,382,073.22
6	ALL UNIFIED DISTRICTS	10,290.48	39,607,540,353.79	10,648.59	40,985,875,626.39
7	San Miguel Joint Un Elementary	10,201.41	5,878,459.98	10,063.62	5,799,062.47
8	ALL ELEMENTARY DISTRICTS	9,887.31	10,663,783,108.35	10,744.10	11,587,867,775.14
9	COMPARATIVE GROUP	9,666.24	308,196,859.51	9,866.43	314,579,594.89
10	Paso Robles Joint Unified	9,379.58	61,860,961.56	8,880.46	58,569,089.36
11	Lucia Mar Unified	9,206.48	93,524,565.95	9,635.19	97,879,650.53
12	Atascadero Unified	8,956.14	39,677,685.04	8,367.65	37,070,536.07
13	Templeton Unified	8,913.12	20,527,626.00	9,049.26	20,841,173.20

Due to inconsistencies in reporting charter school ADA and financial information, statewide average amounts per ADA may be impacted.

**TOTAL GENERAL FUND REVENUE FOR 2016-17
By Funding Sources Per ADA (Part 1)**

RANK	DISTRICT	LCFF Revenue per ADA	Federal Revenue Per ADA	Other State Revenue per ADA	Other Local and Prior Year Revenue Per ADA
1	<i>Coast Unified</i>	<i>16,820.44</i>	<i>521.72</i>	<i>1,460.84</i>	<i>953.50</i>
2	Cayucos Elementary	13,404.75	875.56	1,968.59	1,125.38
3	Shandon Joint Unified	12,013.59	568.61	1,409.84	1,621.01
4	San Luis Coastal Unified	10,335.56	412.31	1,065.62	770.11
5	Pleasant Valley Jt Un Elementary	10,333.04	595.57	1,303.01	1,155.14
6	San Miguel Joint Un Elementary	9,636.11	767.74	1,021.21	899.72
7	<i>ALL UNIFIED DISTRICTS</i>	<i>9,605.92</i>	<i>727.53</i>	<i>1,426.34</i>	<i>629.23</i>
8	<i>COMPARATIVE GROUP</i>	<i>9,261.06</i>	<i>494.07</i>	<i>1,139.85</i>	<i>604.89</i>
9	<i>ALL ELEMENTARY DISTRICTS</i>	<i>9,200.02</i>	<i>589.54</i>	<i>1,041.57</i>	<i>862.11</i>
10	Lucia Mar Unified	8,908.33	474.35	1,107.29	511.51
11	Paso Robles Joint Unified	8,895.37	644.93	1,070.19	626.01
12	Atascadero Unified	8,767.74	493.38	975.78	420.00
13	Templeton Unified	8,581.73	291.33	1,946.83	519.72

UNRESTRICTED GENERAL FUND REVENUES FOR 2016-17

1	<i>Coast Unified</i>	<i>16,472.02</i>	<i>2.60</i>	<i>448.72</i>	<i>352.09</i>
2	Cayucos Elementary	13,084.60	0.00	394.21	314.22
3	Shandon Joint Unified	11,718.88	0.76	391.97	433.97
4	San Luis Coastal Unified	10,017.34	21.95	400.27	517.89
5	Pleasant Valley Jt Un Elementary	9,950.89	0.00	493.72	327.04
6	<i>ALL UNIFIED DISTRICTS</i>	<i>9,578.25</i>	<i>28.51</i>	<i>409.30</i>	<i>274.42</i>
7	San Miguel Joint Un Elementary	9,299.33	0.00	432.96	469.11
8	<i>ALL ELEMENTARY DISTRICTS</i>	<i>9,118.75</i>	<i>25.52</i>	<i>399.58</i>	<i>343.46</i>
9	<i>COMPARATIVE GROUP</i>	<i>8,939.35</i>	<i>10.29</i>	<i>408.81</i>	<i>307.79</i>
10	Lucia Mar Unified	8,583.24	0.18	409.59	213.47
11	Paso Robles Joint Unified	8,581.24	20.04	412.63	365.67
12	Atascadero Unified	8,440.82	7.92	408.16	99.24
13	Templeton Unified	8,254.74	0.00	416.68	241.70

Due to inconsistencies in reporting charter school ADA and financial information, statewide average amounts per ADA may be impacted.

Table 4 - Part 1

SPECIAL EDUCATION PROGRAM EXPENSE PER ADA FOR 2016-17

(Total of Goals 5000 - 5999)

RANK	DISTRICT	Revenue per ADA	Expense per ADA	Contribution per ADA	Contribution as % of Special Ed Expense	Contribution as % of Total Expense
1	Shandon Joint Unified	1,101.44	2,636.95	1,535.50	58.23%	10.09%
2	San Miguel Joint Un Elementary	974.95	2,444.36	1,469.41	60.11%	11.98%
3	Coast Unified	918.22	2,378.23	1,460.01	61.39%	6.84%
4	ALL UNIFIED DISTRICTS	821.82	2,193.09	1,371.27	62.53%	11.17%
5	San Luis Coastal Unified	802.13	2,149.22	1,347.09	62.68%	10.44%
6	Paso Robles Joint Unified	793.76	2,100.17	1,306.40	62.20%	11.49%
7	COMPARATIVE GROUP	789.75	2,032.31	1,242.55	61.14%	10.73%
8	Lucia Mar Unified	692.28	1,920.71	1,228.42	63.96%	11.33%
9	Atascadero Unified	1,006.64	2,211.66	1,205.02	54.48%	11.12%
10	ALL ELEMENTARY DISTRICTS	723.02	1,866.61	1,143.59	61.27%	9.78%
11	Pleasant Valley Jt Un Elementary	1,253.98	2,382.53	1,128.54	47.37%	8.91%
12	Cayucos Elementary	875.43	1,692.81	817.38	48.29%	4.80%
13	Templeton Unified	639.59	1,452.33	812.75	55.96%	7.03%

Due to inconsistencies in reporting charter school ADA and financial information, statewide average amounts per ADA may be impacted.

AVERAGE CLASS SIZE BY GRADE LEVEL

Table 1

RANK	DISTRICT	DISTRICT AVERAGE	GRADE K-3	GRADE 4-6	GRADE 7-8	GRADE 9-12
1	Paso Robles Joint Unified	27.51	25.82	29.35	31.31	26.04
2	San Luis Coastal Unified	25.49	22.80	28.41	25.82	25.45
3	Templeton Unified	25.26	22.66	27.82	25.61	24.85
4	Atascadero Unified	24.78	26.84	28.75	25.69	23.77
5	Lucia Mar Unified	24.62	21.64	29.06	26.37	23.84
6	ALL UNIFIED DISTRICTS	23.33	21.58	26.27	26.04	22.74
7	COMPARATIVE GROUP	22.60	22.34	25.37	23.86	23.04
8	San Miguel Joint Un Elementary	20.41	20.23	22.14	19.26	0.00
9	Pleasant Valley Jt Un Elementary	20.00	19.00	21.00	0.00	0.00
10	ALL ELEMENTARY SCHOOL DISTRI	19.87	19.17	23.08	25.59	6.68
11	Cayucos Elementary	18.75	20.25	20.63	17.70	0.00
12	Shandon Joint Unified	16.58	21.80	21.14	19.09	14.27
13	Coast Unified	14.97	20.00	16.35	21.53	12.64

STUDENT ENROLLMENT PER CLASSROOM TEACHER

Table 2

RANK	DISTRICT	2012	2013	2014	2015	2016
1	Cayucos Elementary	14.00	14.11	12.78	12.96	13.19
2	Coast Unified	16.46	16.65	15.58	15.84	14.90
3	Shandon Joint Unified	16.47	16.04	15.85	13.85	16.19
4	Pleasant Valley Jt Un Elementary	19.87	21.00	22.17	18.33	17.07
5	San Miguel Joint Un Elementary	18.55	18.11	17.30	17.71	17.74
6	Lucia Mar Unified	21.89	21.13	19.54	19.59	19.52
7	San Luis Coastal Unified	20.32	20.28	20.07	19.93	19.94
8	COMPARATIVE GROUP	21.68	21.41	20.45	20.16	20.31
9	Atascadero Unified	22.04	22.33	22.04	21.23	21.06
10	ALL UNIFIED DISTRICTS	22.62	22.60	22.01	21.48	21.08
11	ALL ELEMENTARY SCHOOL DISTRI	23.00	22.74	22.22	21.77	21.30
12	Templeton Unified	23.56	24.31	22.68	21.49	21.32
13	Paso Robles Joint Unified	23.31	22.74	21.62	21.28	22.23

Beginning with the 2012-13 school year, the CDE modified the data structure of the source data used to generate these reports. As a result, some inconsistencies may appear when reviewing historical information.

STUDENT ENROLLMENT PER PUPIL SERVICES AND SPECIAL EDUCATION EMPLOYEE

Table 3

RANK	DISTRICT	2012	2013	2014	2015	2016
1	Cayucos Elementary	0.00	0.00	0.00	0.00	0.00
2	Atascadero Unified	255.28	230.98	200.42	189.86	148.54
3	Coast Unified	200.53	268.73	255.64	247.86	170.79
4	Templeton Unified	242.05	265.81	244.78	214.65	178.21
5	San Luis Coastal Unified	137.09	173.66	180.72	186.48	191.73
6	Pleasant Valley Jt Un Elementary	420.00	90.00	133.00	84.62	198.00
7	ALL UNIFIED DISTRICTS	267.08	256.62	245.93	233.30	224.04
8	COMPARATIVE GROUP	231.60	236.27	231.01	222.38	226.66
9	ALL ELEMENTARY SCHOOL DISTRICTS	341.08	335.15	308.34	284.04	268.94
10	Lucia Mar Unified	315.03	262.31	255.00	241.63	290.16
11	Paso Robles Joint Unified	282.09	302.45	292.63	260.23	296.26
12	Shandon Joint Unified	1,540.00	188.00	292.00	289.00	326.32
13	San Miguel Joint Un Elementary	245.27	265.24	287.98	629.00	373.17

Beginning with the 2012-13 school year, the CDE modified the data structure of the source data used to generate these reports. As a result, some inconsistencies may appear when reviewing historical information.

STUDENT ENROLLMENT PER NON-ADMINISTRATIVE CERTIFICATED EMPLOYEE

Table 4

RANK	DISTRICT	2012	2013	2014	2015	2016
1	Cayucos Elementary	14.00	14.11	12.78	12.96	13.19
2	Coast Unified	15.22	15.68	14.69	14.89	13.70
3	Shandon Joint Unified	16.30	14.78	15.04	13.22	15.42
4	Pleasant Valley Jt Un Elementary	18.98	17.03	19.00	15.07	15.71
5	San Miguel Joint Un Elementary	17.25	16.95	16.32	17.23	16.93
6	San Luis Coastal Unified	17.70	18.16	18.07	18.00	18.06
7	Lucia Mar Unified	20.47	19.56	18.15	18.12	18.29
8	Atascadero Unified	20.29	20.36	19.86	19.09	18.44
9	COMPARATIVE GROUP	19.83	19.64	18.79	18.48	18.64
10	Templeton Unified	21.47	22.27	20.76	19.54	19.04
11	ALL UNIFIED DISTRICTS	20.85	20.77	20.20	19.67	19.26
12	ALL ELEMENTARY SCHOOL DISTRI	21.55	21.30	20.73	20.22	19.74
13	Paso Robles Joint Unified	21.53	21.15	20.13	19.67	20.68

Beginning with the 2012-13 school year, the CDE modified the data structure of the source data used to generate these reports. As a result, some inconsistencies may appear when reviewing historical information.

STUDENT ENROLLMENT PER ALL CERTIFICATED EMPLOYEES

Table 5

RANK	DISTRICT	2012	2013	2014	2015	2016
1	Cayucos Elementary	12.40	12.46	11.99	11.54	11.72
2	Coast Unified	13.65	14.54	13.38	13.54	12.24
3	Pleasant Valley Jt Un Elementary	17.65	14.16	16.63	11.83	13.56
4	Shandon Joint Unified	14.74	14.04	13.96	12.11	13.69
5	San Miguel Joint Un Elementary	16.30	15.67	15.09	16.00	15.64
6	San Luis Coastal Unified	16.39	16.74	16.63	16.57	16.63
7	Templeton Unified	19.14	19.90	18.19	17.20	16.77
8	Lucia Mar Unified	19.10	18.25	16.92	16.95	17.11
9	COMPARATIVE GROUP	18.39	18.20	17.37	17.10	17.16
10	Atascadero Unified	19.00	19.06	18.53	17.79	17.21
11	ALL UNIFIED DISTRICTS	19.42	19.31	18.72	18.31	17.89
12	ALL ELEMENTARY SCHOOL DISTRI	20.06	19.80	19.26	18.77	18.29
13	Paso Robles Joint Unified	20.01	19.70	18.70	18.31	18.73

Beginning with the 2012-13 school year, the CDE modified the data structure of the source data used to generate these reports. As a result, some inconsistencies may appear when reviewing historical information.

STUDENT ENROLLMENT PER PARAPROFESSIONAL CLASSIFIED EMPLOYEE

Table 6

RANK	DISTRICT	2012	2013	2014	2015	2016
1	Pleasant Valley Jt Un Elementary	45.00	39.38	25.33	27.03	19.30
2	Shandon Joint Unified	128.33	58.75	46.72	40.31	32.80
3	Atascadero Unified	90.61	82.85	44.04	47.99	42.49
4	Cayucos Elementary	36.17	48.41	32.17	30.00	45.87
5	San Miguel Joint Un Elementary	93.13	118.85	58.78	67.71	48.53
6	Coast Unified	86.59	83.98	59.58	71.69	52.00
7	San Luis Coastal Unified	58.46	56.55	59.38	59.38	58.28
8	Paso Robles Joint Unified	142.88	136.67	67.45	56.79	58.62
9	COMPARATIVE GROUP	95.39	96.27	62.87	61.43	60.75
10	ALL ELEMENTARY SCHOOL DISTRI	118.08	115.14	88.81	82.91	77.36
11	Lucia Mar Unified	114.35	142.17	76.99	74.77	79.23
12	ALL UNIFIED DISTRICTS	122.32	116.75	87.53	81.27	79.83
13	Templeton Unified	236.00	165.33	81.81	84.44	89.98

Beginning with the 2012-13 school year, the CDE modified the data structure of the source data used to generate these reports. As a result, some inconsistencies may appear when reviewing historical information.

STUDENT ENROLLMENT PER CLERICAL EMPLOYEE

Table 7

RANK	DISTRICT	2012	2013	2014	2015	2016
1	Coast Unified	60.48	62.63	56.38	51.52	47.41
2	Pleasant Valley Jt Un Elementary	0.00	157.50	81.60	67.48	60.74
3	Templeton Unified	173.53	172.22	156.02	143.43	74.49
4	Shandon Joint Unified	61.60	47.00	48.67	48.17	77.50
5	San Miguel Joint Un Elementary	149.00	220.71	114.75	173.28	79.17
6	Cayucos Elementary	217.00	71.00	96.50	70.00	105.50
7	San Luis Coastal Unified	128.28	115.41	113.66	107.21	113.29
8	COMPARATIVE GROUP	136.14	138.86	132.76	123.34	119.68
9	ALL UNIFIED DISTRICTS	135.14	137.23	126.39	122.14	120.14
10	Atascadero Unified	161.62	153.94	133.62	134.08	120.63
11	ALL ELEMENTARY SCHOOL DISTRI	148.75	150.19	136.37	132.38	124.65
12	Paso Robles Joint Unified	135.27	120.09	126.35	114.09	130.14
13	Lucia Mar Unified	128.23	172.63	162.20	142.97	145.62

Beginning with the 2012-13 school year, the CDE modified the data structure of the source data used to generate these reports. As a result, some inconsistencies may appear when reviewing historical information.

STUDENT ENROLLMENT PER OTHER CLASSIFIED EMPLOYEE

Table 8

RANK	DISTRICT	2012	2013	2014	2015	2016
1	<i>Coast Unified</i>	<i>34.32</i>	<i>27.57</i>	<i>27.78</i>	<i>26.76</i>	<i>23.75</i>
2	San Miguel Joint Un Elementary	35.48	44.14	29.05	34.89	29.49
3	Shandon Joint Unified	34.22	45.48	24.85	30.17	35.35
4	Paso Robles Joint Unified	58.01	61.40	58.11	49.43	40.03
5	Atascadero Unified	49.02	49.60	43.81	41.95	44.92
6	<i>ALL UNIFIED DISTRICTS</i>	<i>64.60</i>	<i>65.05</i>	<i>58.40</i>	<i>56.63</i>	<i>54.23</i>
7	<i>COMPARATIVE GROUP</i>	<i>59.58</i>	<i>61.56</i>	<i>56.91</i>	<i>57.83</i>	<i>54.83</i>
8	San Luis Coastal Unified	59.30	56.81	58.83	57.67	56.14
9	<i>ALL ELEMENTARY SCHOOL DISTRI</i>	<i>70.35</i>	<i>69.00</i>	<i>62.56</i>	<i>60.28</i>	<i>58.42</i>
10	Cayucos Elementary	0.00	66.56	27.57	52.50	59.44
11	Lucia Mar Unified	75.36	78.42	72.62	92.36	77.43
12	Templeton Unified	48.56	55.36	52.20	49.99	86.05
13	Pleasant Valley Jt Un Elementary	52.50	315.00	211.11	75.86	176.79

Beginning with the 2012-13 school year, the CDE modified the data structure of the source data used to generate these reports. As a result, some inconsistencies may appear when reviewing historical information.

STUDENT ENROLLMENT PER ALL CLASSIFIED EMPLOYEES

Table 9

RANK	DISTRICT	2012	2013	2014	2015	2016
1	Coast Unified	17.48	15.59	14.18	14.14	12.13
2	Pleasant Valley Jt Un Elementary	24.23	28.64	17.71	15.38	13.52
3	Shandon Joint Unified	18.78	16.59	12.17	12.70	13.95
4	San Miguel Joint Un Elementary	21.91	28.09	16.63	20.32	14.89
5	Atascadero Unified	26.58	25.82	18.86	19.18	18.49
6	Paso Robles Joint Unified	31.61	31.32	25.03	21.46	20.11
7	Cayucos Elementary	31.00	20.09	12.87	15.00	20.79
8	San Luis Coastal Unified	23.94	22.75	23.45	22.98	22.83
9	COMPARATIVE GROUP	28.89	29.56	24.39	23.99	23.23
10	ALL UNIFIED DISTRICTS	32.20	32.03	27.43	26.21	25.45
11	ALL ELEMENTARY SCHOOL DISTRI	34.01	33.52	28.92	27.62	26.27
12	Templeton Unified	32.69	33.42	26.46	25.76	27.65
13	Lucia Mar Unified	33.54	39.10	30.37	32.06	30.86

Beginning with the 2012-13 school year, the CDE modified the data structure of the source data used to generate these reports. As a result, some inconsistencies may appear when reviewing historical information.

STUDENT ENROLLMENT PER ADULTS WITH STUDENT CONTACT

Table 10

RANK	DISTRICT	2012	2013	2014	2015	2016
1	Pleasant Valley Jt Un Elementary	13.35	11.89	10.86	9.67	8.66
2	Cayucos Elementary	10.09	10.92	9.15	9.05	10.24
3	Shandon Joint Unified	14.46	11.81	11.38	9.96	10.49
4	Coast Unified	12.94	13.21	11.78	12.33	10.85
5	San Miguel Joint Un Elementary	14.55	14.84	12.77	13.73	12.55
6	Atascadero Unified	16.58	16.34	13.69	13.66	12.86
7	San Luis Coastal Unified	13.58	13.75	13.85	13.82	13.79
8	COMPARATIVE GROUP	16.42	16.31	14.47	14.21	14.26
9	Lucia Mar Unified	17.36	17.19	14.69	14.59	14.86
10	Paso Robles Joint Unified	18.71	18.32	15.50	14.61	15.29
11	ALL UNIFIED DISTRICTS	17.82	17.63	16.41	15.84	15.52
12	Templeton Unified	19.68	19.63	16.56	15.86	15.72
13	ALL ELEMENTARY SCHOOL DISTRI	18.22	17.97	16.81	16.26	15.73

Beginning with the 2012-13 school year, the CDE modified the data structure of the source data used to generate these reports. As a result, some inconsistencies may appear when reviewing historical information.

STUDENT ENROLLMENT PER SCHOOL LEVEL ADMINISTRATOR

Table 11

RANK	DISTRICT	2012	2013	2014	2015	2016
1	Pleasant Valley Jt Un Elementary	504.00	126.00	133.00	220.00	198.00
2	Cayucos Elementary	144.67	142.00	193.00	210.00	211.00
3	Shandon Joint Unified	308.00	0.00	584.00	192.67	213.79
4	Coast Unified	258.31	254.83	242.41	239.31	223.79
5	Templeton Unified	538.81	511.34	428.79	407.83	298.50
6	San Luis Coastal Unified	360.44	350.62	348.00	347.81	351.35
7	Lucia Mar Unified	422.64	443.08	369.31	356.80	354.97
8	COMPARATIVE GROUP	420.35	427.18	381.52	366.95	357.77
9	Atascadero Unified	416.00	433.82	363.23	335.79	383.14
10	ALL UNIFIED DISTRICTS	415.66	405.67	380.92	400.64	387.98
11	ALL ELEMENTARY SCHOOL DISTRICTS	463.59	448.50	426.57	408.82	396.14
12	Paso Robles Joint Unified	463.23	468.32	432.67	450.60	402.01
13	San Miguel Joint Un Elementary	0.00	0.00	0.00	483.85	408.00

Beginning with the 2012-13 school year, the CDE modified the data structure of the source data used to generate these reports. As a result, some inconsistencies may appear when reviewing historical information.

STUDENT ENROLLMENT PER DISTRICT LEVEL ADMINISTRATOR

Table 12

RANK	DISTRICT	2012	2013	2014	2015	2016
1	Pleasant Valley Jt Un Elementary	504.00	252.00	0.00	73.33	198.00
2	Cayucos Elementary	434.00	426.00	0.00	210.00	211.00
3	Coast Unified	272.14	923.75	390.56	396.57	236.00
4	Templeton Unified	263.10	293.49	223.05	222.45	265.33
5	Shandon Joint Unified	308.00	282.00	292.00	578.00	281.82
6	Paso Robles Joint Unified	733.44	742.39	672.31	645.58	391.61
7	San Miguel Joint Un Elementary	298.00	206.00	199.67	419.33	408.00
8	San Luis Coastal Unified	572.79	549.48	519.58	519.31	524.58
9	COMPARATIVE GROUP	644.50	593.37	578.94	601.84	547.25
10	ALL ELEMENTARY SCHOOL DISTRICTS	780.67	756.11	748.03	721.38	664.18
11	ALL UNIFIED DISTRICTS	879.01	853.15	776.03	774.20	712.64
12	Atascadero Unified	1,063.11	954.40	1,180.50	1,175.25	785.76
13	Lucia Mar Unified	880.50	708.93	765.00	973.09	1,064.90

Beginning with the 2012-13 school year, the CDE modified the data structure of the source data used to generate these reports. As a result, some inconsistencies may appear when reviewing historical information.

COMPARATIVE ANALYSIS OF CERTIFICATED SALARIES AND BENEFITS, 2016-17

SELECTED COMPARATIVE DISTRICT DATA

RANKED BY AVERAGE DAILY ATTENDANCE

Table 1

DISTRICT NAME	RANK	2016-17 P-2 ADA	TOTAL SALARY SCHEDULE COST	TOTAL SALARY SCHEDULE FTE	ADA/FTE RATIO*	UPP**
STATEWIDE UNIFIED AVERAGE	1	3,796,661	15,415,295,529	196,267.95	19.34	63.17%
REGION 08 UNIFIED AVERAGE	2	149,449	562,425,171	7,696.87	19.42	47.23%
COMPARATIVE GROUP AVERAGE	3	31,308	123,758,736	1,773.86	17.65	44.03%
LUCIA MAR UNIFIED	4	10,159	39,050,468	584.21	17.39	50.91%
SAN LUIS COASTAL UNIFIED	5	7,228	32,339,126	433.73	16.66	38.85%
PASO ROBLES JOINT UNIFIED	6	6,595	25,026,371	351.98	18.74	51.63%
ATASCADERO UNIFIED	7	4,430	15,753,490	230.61	19.21	36.80%
TEMPLETON UNIFIED	8	2,303	8,949,152	130.58	17.64	17.95%
COAST UNIFIED	9	614	3,503,954	47.00	13.06	67.35%
SHANDON JOINT UNIFIED	10	302	1,239,852	20.50	14.71	79.69%
CAYUCOS ELEMENTARY	11	202	1,057,161	16.25	12.44	35.50%
PLEASANT VALLEY JT UN ELEMENTARY	12	89	343,116	6.00	14.79	50.29%

* This ratio is derived by dividing district P-2 ADA by certificated staff paid on the teacher salary schedule.

**Unduplicated Pupil Percentage

Comparative group average does not include the client district.

Region 08 includes the counties of Kern, San Luis Obispo, Santa Barbara and Ventura

TOTAL CERTIFICATED SALARIES FOR 2016-17

Table 1

RANK	DISTRICT	Certificated Salaries Per ADA	Certificated Salaries Dollars	% of Total Expense	% of Total Expense, Transfers & Other Uses
1	Coast Unified	7,577.99	4,651,599.51	35.73%	35.50%
2	Cayucos Elementary	6,852.54	1,384,761.32	41.76%	40.22%
3	San Luis Coastal Unified	5,488.05	39,668,061.17	43.04%	42.55%
4	ALL UNIFIED DISTRICTS	5,294.94	20,379,951,450.18	43.75%	43.14%
5	Shandon Joint Unified	5,261.75	1,586,627.49	34.65%	34.57%
6	ALL ELEMENTARY SCHOOL DISTRI	5,075.13	5,473,689,982.32	44.21%	43.42%
7	San Miguel Joint Un Elementary	5,030.40	2,898,716.54	41.23%	41.00%
8	COMPARATIVE GROUP	5,030.38	160,387,733.35	43.69%	43.44%
9	Pleasant Valley Jt Un Elementary	4,998.63	443,628.71	39.49%	39.49%
10	Lucia Mar Unified	4,978.63	50,575,726.01	45.90%	45.90%
11	Paso Robles Joint Unified	4,863.76	32,077,883.18	43.01%	42.79%
12	Templeton Unified	4,787.66	11,026,366.56	41.93%	41.42%
13	Atascadero Unified	4,678.31	20,725,962.37	43.31%	43.16%

UNRESTRICTED CERTIFICATED SALARIES FOR 2016-17

1	Coast Unified	6,578.12	4,037,845.78	39.63%	39.30%
2	Cayucos Elementary	6,190.13	1,250,901.32	47.63%	45.43%
3	San Luis Coastal Unified	4,620.05	33,394,111.07	48.00%	47.27%
4	Shandon Joint Unified	4,355.93	1,313,488.40	42.98%	42.83%
5	ALL UNIFIED DISTRICTS	4,242.51	16,329,199,015.80	49.95%	49.07%
6	ALL ELEMENTARY SCHOOL DISTRI	4,180.54	4,508,851,469.02	50.40%	49.28%
7	COMPARATIVE GROUP	4,153.04	132,414,735.83	50.18%	49.81%
8	Lucia Mar Unified	4,103.84	41,689,059.19	53.60%	53.60%
9	Pleasant Valley Jt Un Elementary	4,077.22	361,852.91	46.26%	46.26%
10	Templeton Unified	3,985.17	9,178,154.98	51.55%	50.63%
11	Paso Robles Joint Unified	3,946.37	26,027,426.67	48.47%	48.12%
12	San Miguel Joint Un Elementary	3,930.37	2,264,835.26	44.84%	44.50%
13	Atascadero Unified	3,822.59	16,934,906.03	50.50%	50.50%

Due to inconsistencies in reporting charter school ADA and financial information, statewide average amounts per ADA may be impacted.

Table 2

CERTIFICATED NON-MANAGEMENT PERSONNEL SALARY EXPENSE FOR 2016-17

RANK	DISTRICT	Certificated Non-Mgmt Salaries Per ADA	Certificated Non-Mgmt Salaries Dollars	% of Total Expense	% of Total Expense, Transfers & Other Uses
1	Coast Unified	6,445.70	3,956,562.59	30.39%	30.19%
2	Cayucos Elementary	5,771.42	1,166,287.79	35.17%	33.87%
3	San Luis Coastal Unified	4,912.02	35,504,480.84	38.53%	38.08%
4	ALL UNIFIED DISTRICTS	4,790.19	18,437,207,362.67	39.58%	39.02%
5	Shandon Joint Unified	4,569.65	1,377,931.53	30.09%	30.02%
6	ALL ELEMENTARY SCHOOL DISTRI	4,555.00	4,912,719,935.02	39.68%	38.97%
7	Lucia Mar Unified	4,511.78	45,833,234.42	41.60%	41.60%
8	COMPARATIVE GROUP	4,496.39	143,362,024.12	39.05%	38.83%
9	San Miguel Joint Un Elementary	4,438.70	2,557,757.56	36.38%	36.17%
10	Templeton Unified	4,289.12	9,878,185.69	37.56%	37.11%
11	Paso Robles Joint Unified	4,241.52	27,973,994.41	37.51%	37.32%
12	Atascadero Unified	4,224.31	18,714,633.17	39.10%	38.97%
13	Pleasant Valley Jt Un Elementary	4,005.84	355,518.71	31.64%	31.64%

UNRESTRICTED CERTIFICATED NON-MANAGEMENT PERSONNEL SALARY EXPENSE FOR 2016-17

1	Coast Unified	5,445.82	3,342,808.86	32.81%	32.54%
2	Cayucos Elementary	5,109.01	1,032,427.79	39.31%	37.50%
3	San Luis Coastal Unified	4,066.49	29,392,908.02	42.25%	41.61%
4	ALL UNIFIED DISTRICTS	3,804.11	14,641,808,362.38	44.78%	44.00%
5	Shandon Joint Unified	3,743.09	1,128,692.48	36.94%	36.80%
6	ALL ELEMENTARY SCHOOL DISTRI	3,717.24	4,009,169,574.13	44.81%	43.82%
7	Lucia Mar Unified	3,680.30	37,386,568.63	48.07%	48.07%
8	COMPARATIVE GROUP	3,664.71	116,845,001.58	44.28%	43.95%
9	Templeton Unified	3,586.34	8,259,637.02	46.39%	45.56%
10	Atascadero Unified	3,433.08	15,209,299.84	45.36%	45.36%
11	San Miguel Joint Un Elementary	3,425.20	1,973,735.32	39.08%	38.78%
12	Pleasant Valley Jt Un Elementary	3,389.53	300,820.91	38.45%	38.45%
13	Paso Robles Joint Unified	3,360.12	22,160,911.57	41.27%	40.97%

Due to inconsistencies in reporting charter school ADA and financial information, statewide average amounts per ADA may be impacted.

Table 3

SITE AND DISTRICT ADMINISTRATOR SALARY EXPENSE FOR 2016-17
(Total of Object Codes 1300 and 2300)

RANK	DISTRICT	Admin Salary Per ADA	Admin Salary Dollars	% of Total Expense	% of Total Expense, Transfers & Other Uses
1	Coast Unified	1,659.86	1,018,872.41	7.83%	7.78%
2	San Miguel Joint Un Elementary	1,120.27	645,545.44	9.18%	9.13%
3	Cayucos Elementary	1,081.12	218,473.53	6.59%	6.35%
4	Pleasant Valley Jt Un Elementary	992.79	88,110.00	7.84%	7.84%
5	Paso Robles Joint Unified	772.79	5,096,791.32	6.83%	6.80%
6	Templeton Unified	695.04	1,600,739.39	6.09%	6.01%
7	Shandon Joint Unified	692.10	208,695.96	4.56%	4.55%
8	San Luis Coastal Unified	686.80	4,964,217.83	5.39%	5.32%
9	COMPARATIVE GROUP	665.80	21,228,164.88	5.78%	5.75%
10	ALL ELEMENTARY SCHOOL DISTRI	664.26	716,430,209.27	5.79%	5.68%
11	ALL UNIFIED DISTRICTS	648.15	2,494,707,702.10	5.36%	5.28%
12	Lucia Mar Unified	592.01	6,013,951.94	5.46%	5.46%
13	Atascadero Unified	539.85	2,391,639.47	5.00%	4.98%

UNRESTRICTED SITE AND DISTRICT ADMINISTRATOR SALARY EXPENSE FOR 2016-17

1	Coast Unified	1,659.86	1,018,872.41	10.00%	9.92%
2	Cayucos Elementary	1,081.12	218,473.53	8.32%	7.94%
3	San Miguel Joint Un Elementary	948.06	546,309.36	10.82%	10.73%
4	Paso Robles Joint Unified	723.54	4,771,954.13	8.89%	8.82%
5	Pleasant Valley Jt Un Elementary	687.68	61,032.00	7.80%	7.80%
6	San Luis Coastal Unified	639.26	4,620,612.24	6.64%	6.54%
7	Shandon Joint Unified	612.84	184,795.92	6.05%	6.03%
8	COMPARATIVE GROUP	596.11	19,006,247.83	7.20%	7.15%
9	ALL ELEMENTARY SCHOOL DISTRI	576.77	622,065,570.43	6.95%	6.80%
10	Templeton Unified	556.96	1,282,730.20	7.20%	7.08%
11	ALL UNIFIED DISTRICTS	553.78	2,131,454,783.40	6.52%	6.41%
12	Lucia Mar Unified	517.41	5,256,096.75	6.76%	6.76%
13	Atascadero Unified	465.95	2,064,243.70	6.16%	6.16%

Due to inconsistencies in reporting charter school ADA and financial information, statewide average amounts per ADA may be impacted.

Table 4

TOTAL CLASSIFIED SALARIES FOR 2016-17

RANK	DISTRICT	Classified Salaries Per ADA	Classified Salaries Dollars	% of Total Expense	% of Total Expense, Transfers & Other Uses
1	Coast Unified	3,752.85	2,303,614.50	17.70%	17.58%
2	San Miguel Joint Un Elementary	2,565.16	1,478,149.36	21.02%	20.91%
3	San Luis Coastal Unified	2,275.85	16,450,050.14	17.85%	17.65%
4	Pleasant Valley Jt Un Elementary	2,234.95	198,351.97	17.65%	17.65%
5	Shandon Joint Unified	2,231.68	672,941.58	14.70%	14.66%
6	Cayucos Elementary	2,084.91	421,317.99	12.71%	12.24%
7	Atascadero Unified	2,017.01	8,935,790.85	18.67%	18.61%
8	COMPARATIVE GROUP	1,901.58	60,629,798.25	16.51%	16.42%
9	Paso Robles Joint Unified	1,858.05	12,254,385.17	16.43%	16.35%
10	ALL UNIFIED DISTRICTS	1,800.82	6,931,248,310.15	14.88%	14.67%
11	Templeton Unified	1,790.69	4,124,112.55	15.68%	15.49%
12	ALL ELEMENTARY SCHOOL DISTRI	1,669.00	1,800,069,094.66	14.54%	14.28%
13	Lucia Mar Unified	1,584.35	16,094,698.64	14.61%	14.61%

UNRESTRICTED CLASSIFIED SALARIES FOR 2016-17

1	Coast Unified	3,371.28	2,069,395.12	20.31%	20.14%
2	San Miguel Joint Un Elementary	1,871.68	1,078,535.04	21.36%	21.19%
3	Shandon Joint Unified	1,838.13	554,269.74	18.14%	18.07%
4	Cayucos Elementary	1,703.56	344,256.18	13.11%	12.50%
5	San Luis Coastal Unified	1,607.86	11,621,732.92	16.70%	16.45%
6	Pleasant Valley Jt Un Elementary	1,488.94	132,143.66	16.89%	16.89%
7	Paso Robles Joint Unified	1,313.22	8,661,075.93	16.13%	16.01%
8	COMPARATIVE GROUP	1,295.30	41,299,221.07	15.65%	15.53%
9	Templeton Unified	1,289.14	2,969,000.63	16.68%	16.38%
10	Atascadero Unified	1,253.35	5,552,617.82	16.56%	16.56%
11	ALL UNIFIED DISTRICTS	1,177.99	4,534,018,767.43	13.87%	13.63%
12	ALL ELEMENTARY SCHOOL DISTRI	1,101.45	1,187,953,486.64	13.28%	12.98%
13	Lucia Mar Unified	1,022.35	10,385,589.15	13.35%	13.35%

Due to inconsistencies in reporting charter school ADA and financial information, statewide average amounts per ADA may be impacted.

CLASSIFIED NON-MANAGEMENT PERSONNEL SALARY EXPENSE FOR 2016-17

Table 5

RANK	DISTRICT	Classified Non-Mgmt Per ADA	Classified Non-Mgmt Dollars	% of Total Expense	% of Total Expense, Transfers & Other Uses
1	Coast Unified	3,225.29	1,979,779.01	15.21%	15.11%
2	Pleasant Valley Jt Un Elementary	2,234.95	198,351.97	17.65%	17.65%
3	Shandon Joint Unified	2,231.68	672,941.58	14.70%	14.66%
4	San Luis Coastal Unified	2,165.09	15,649,412.64	16.98%	16.79%
5	Cayucos Elementary	2,084.91	421,317.99	12.71%	12.24%
6	San Miguel Joint Un Elementary	2,036.59	1,173,562.90	16.69%	16.60%
7	Atascadero Unified	1,931.16	8,555,480.58	17.88%	17.82%
8	COMPARATIVE GROUP	1,769.78	56,427,342.60	15.37%	15.28%
9	Paso Robles Joint Unified	1,707.51	11,261,482.62	15.10%	15.02%
10	ALL UNIFIED DISTRICTS	1,657.41	6,379,284,695.56	13.69%	13.50%
11	Templeton Unified	1,594.19	3,671,554.03	13.96%	13.79%
12	ALL ELEMENTARY SCHOOL DISTRICTS	1,524.86	1,644,608,932.69	13.28%	13.04%
13	Lucia Mar Unified	1,459.19	14,823,238.29	13.45%	13.45%

UNRESTRICTED CLASSIFIED NON-MANAGEMENT SALARY EXPENSE FOR 2016-17

1	Coast Unified	2,843.72	1,745,559.63	17.13%	16.99%
2	Shandon Joint Unified	1,838.13	554,269.74	18.14%	18.07%
3	Cayucos Elementary	1,703.56	344,256.18	13.11%	12.50%
4	San Luis Coastal Unified	1,522.16	11,002,323.73	15.81%	15.57%
5	Pleasant Valley Jt Un Elementary	1,488.94	132,143.66	16.89%	16.89%
6	San Miguel Joint Un Elementary	1,428.79	823,325.62	16.30%	16.18%
7	COMPARATIVE GROUP	1,187.52	37,862,707.49	14.35%	14.24%
8	Atascadero Unified	1,176.91	5,213,980.31	15.55%	15.55%
9	Paso Robles Joint Unified	1,175.94	7,755,636.90	14.44%	14.34%
10	Templeton Unified	1,131.00	2,604,788.39	14.63%	14.37%
11	ALL UNIFIED DISTRICTS	1,062.62	4,089,954,637.45	12.51%	12.29%
12	ALL ELEMENTARY SCHOOL DISTRICTS	987.98	1,065,569,811.10	11.91%	11.65%
13	Lucia Mar Unified	928.48	9,431,982.96	12.13%	12.13%

Due to inconsistencies in reporting charter school ADA and financial information, statewide average amounts per ADA may be impacted.

Table 6

TOTAL EMPLOYEE BENEFIT EXPENSE FOR 2016-17

RANK	DISTRICT	Employee Benefits Per ADA	Employee Benefits Dollars	% of Total Expense, Transfers & Other Uses	% of Total Salary
1	Coast Unified	4,238.73	2,601,859.93	19.86%	37.41%
2	Cayucos Elementary	3,724.83	752,713.67	21.86%	41.68%
3	Shandon Joint Unified	3,005.03	906,135.26	19.74%	40.10%
4	San Luis Coastal Unified	2,954.11	21,352,519.48	22.90%	38.05%
5	ALL UNIFIED DISTRICTS	2,845.54	10,952,341,861.77	23.18%	40.10%
6	Paso Robles Joint Unified	2,675.46	17,645,414.16	23.54%	39.80%
7	COMPARATIVE GROUP	2,612.03	83,281,372.83	22.56%	37.68%
8	ALL ELEMENTARY SCHOOL DISTRI	2,576.53	2,778,873,461.96	22.04%	38.20%
9	San Miguel Joint Un Elementary	2,553.25	1,471,285.41	20.81%	33.62%
10	Lucia Mar Unified	2,539.54	25,798,111.57	23.41%	38.69%
11	Templeton Unified	2,306.61	5,312,313.21	19.95%	35.06%
12	Pleasant Valley Jt Un Elementary	2,239.99	198,799.53	17.69%	30.97%
13	Atascadero Unified	2,222.03	9,844,080.54	20.50%	33.19%

UNRESTRICTED EMPLOYEE BENEFIT EXPENSE FOR 2016-17

1	Coast Unified	3,210.00	1,970,393.23	19.18%	32.26%
2	Cayucos Elementary	2,894.38	584,897.24	21.24%	36.67%
3	Shandon Joint Unified	2,143.39	646,317.04	21.07%	34.60%
4	San Luis Coastal Unified	2,041.02	14,752,652.01	20.88%	32.77%
5	ALL UNIFIED DISTRICTS	1,896.19	7,298,356,927.48	21.93%	34.98%
6	Paso Robles Joint Unified	1,849.29	12,196,617.50	22.55%	35.16%
7	ALL ELEMENTARY SCHOOL DISTRI	1,786.87	1,927,197,160.03	21.06%	33.83%
8	San Miguel Joint Un Elementary	1,781.72	1,026,700.24	20.17%	30.71%
9	COMPARATIVE GROUP	1,772.94	56,528,126.06	21.26%	32.54%
10	Lucia Mar Unified	1,702.90	17,298,980.37	22.24%	33.22%
11	Templeton Unified	1,574.92	3,627,177.09	20.01%	29.86%
12	Atascadero Unified	1,415.55	6,271,179.59	18.70%	27.89%
13	Pleasant Valley Jt Un Elementary	1,392.73	123,604.98	15.80%	25.02%

Due to inconsistencies in reporting charter school ADA and financial information, statewide average amounts per ADA may be impacted.

Table 7

HEALTH AND WELFARE BENEFIT EXPENSE FOR 2016-17

(Total of Object Codes 3401, 3402, 3901, and 3902)

RANK	DISTRICT	Health Welfare Per ADA	Health Welfare Dollars	% of Total Expense, Transfers and Other Uses	% of Total Salary
1	Cayucos Elementary	1,706.72	344,894.54	10.02%	19.10%
2	Coast Unified	1,555.87	955,039.69	7.29%	13.73%
3	Shandon Joint Unified	1,224.66	369,285.06	8.05%	16.34%
4	ALL UNIFIED DISTRICTS	1,066.09	4,103,322,372.27	8.69%	15.02%
5	San Luis Coastal Unified	1,030.18	7,446,237.54	7.99%	13.27%
6	ALL ELEMENTARY SCHOOL DISTRI	1,002.87	1,081,629,079.01	8.58%	14.87%
7	Paso Robles Joint Unified	956.76	6,310,090.13	8.42%	14.23%
8	San Miguel Joint Un Elementary	929.70	535,728.08	7.58%	12.24%
9	Lucia Mar Unified	908.82	9,232,309.67	8.38%	13.85%
10	COMPARATIVE GROUP	905.02	28,855,350.22	7.81%	13.06%
11	Templeton Unified	829.11	1,909,515.18	7.17%	12.60%
12	Atascadero Unified	599.96	2,657,937.82	5.54%	8.96%
13	Pleasant Valley Jt Un Elementary	556.08	49,352.20	4.39%	7.69%

UNRESTRICTED HEALTH AND WELFARE BENEFIT EXPENSE FOR 2016-17

1	Cayucos Elementary	1,541.21	311,448.46	11.31%	19.52%
2	Coast Unified	1,366.89	839,037.72	8.17%	13.74%
3	Shandon Joint Unified	1,020.80	307,810.99	10.04%	16.48%
4	San Luis Coastal Unified	838.87	6,063,450.84	8.58%	13.47%
5	ALL UNIFIED DISTRICTS	801.25	3,083,985,849.36	9.27%	14.78%
6	ALL ELEMENTARY SCHOOL DISTRI	797.12	859,717,027.46	9.40%	15.09%
7	Paso Robles Joint Unified	781.53	5,154,429.57	9.53%	14.86%
8	San Miguel Joint Un Elementary	774.77	446,454.33	8.77%	13.35%
9	COMPARATIVE GROUP	733.69	23,392,923.24	8.80%	13.47%
10	Lucia Mar Unified	723.13	7,345,933.49	9.45%	14.11%
11	Templeton Unified	691.18	1,591,832.58	8.78%	13.10%
12	Atascadero Unified	480.97	2,130,804.30	6.35%	9.48%
13	Pleasant Valley Jt Un Elementary	459.25	40,758.68	5.21%	8.25%

Due to inconsistencies in reporting charter school ADA and financial information, statewide average amounts per ADA may be impacted.

OTHER POST-EMPLOYMENT BENEFITS EXPENSE FOR 2016-17
(Total of Object Codes 3701, 3702, 3751 and 3752)

RANK	DISTRICT	OPEB Per ADA	Other Post- Employment Benefits Dollars	% of Total Expense, Transfers and Other Uses	% of Total Salary
1	ALL UNIFIED DISTRICTS	186.93	719,471,330.04	1.52%	2.63%
2	Paso Robles Joint Unified	179.74	1,185,445.27	1.58%	2.67%
3	San Luis Coastal Unified	135.54	979,700.69	1.05%	1.75%
4	COMPARATIVE GROUP	119.21	3,800,978.24	1.03%	1.72%
5	Lucia Mar Unified	114.16	1,159,698.18	1.05%	1.74%
6	Atascadero Unified	99.73	441,818.22	0.92%	1.49%
7	ALL ELEMENTARY SCHOOL DISTRICTS	93.20	100,519,074.68	0.80%	1.38%
8	Shandon Joint Unified	38.91	11,732.00	0.26%	0.52%
9	Templeton Unified	9.81	22,583.88	0.08%	0.15%
10	Coast Unified	0.00	0.00	0.00%	0.00%
11	San Miguel Joint Un Elementary	0.00	0.00	0.00%	0.00%
12	Pleasant Valley Jt Un Elementary	0.00	0.00	0.00%	0.00%
13	Cayucos Elementary	0.00	0.00	0.00%	0.00%

UNRESTRICTED OTHER POST-EMPLOYMENT BENEFITS EXPENSE FOR 2016-17

1	ALL UNIFIED DISTRICTS	140.98	542,623,147.91	1.15%	1.99%
2	Paso Robles Joint Unified	140.44	926,223.58	1.24%	2.09%
3	San Luis Coastal Unified	135.54	979,700.69	1.05%	1.75%
4	COMPARATIVE GROUP	103.81	3,309,956.04	0.90%	1.50%
5	Lucia Mar Unified	101.91	1,035,238.74	0.94%	1.55%
6	ALL ELEMENTARY SCHOOL DISTRICTS	81.16	87,532,834.72	0.69%	1.20%
7	Atascadero Unified	75.50	334,477.15	0.70%	1.13%
8	Shandon Joint Unified	38.91	11,732.00	0.26%	0.52%
9	Templeton Unified	9.81	22,583.88	0.08%	0.15%
10	Coast Unified	0.00	0.00	0.00%	0.00%
11	San Miguel Joint Un Elementary	0.00	0.00	0.00%	0.00%
12	Pleasant Valley Jt Un Elementary	0.00	0.00	0.00%	0.00%
13	Cayucos Elementary	0.00	0.00	0.00%	0.00%

Due to inconsistencies in reporting charter school ADA and financial information, statewide average amounts per ADA may be impacted.

ALL PERSONNEL SALARY AND BENEFIT EXPENSES FOR 2016-17

Table 9

RANK	DISTRICT	% of Total Expense	% of Total Expense, Transfers and Other Uses	Personnel Salary & Benefits per ADA	Personnel Salary & Benefits Dollars
1	San Luis Coastal Unified	84.06%	83.10%	10,718.01	77,470,630.79
2	Lucia Mar Unified	83.93%	83.93%	9,102.52	92,468,536.22
3	San Miguel Joint Un Elementary	83.17%	82.71%	10,148.81	5,848,151.31
4	Paso Robles Joint Unified	83.11%	82.68%	9,397.28	61,977,682.51
5	COMPARATIVE GROUP	82.89%	82.41%	9,543.99	304,298,904.43
6	Atascadero Unified	82.54%	82.27%	8,917.35	39,505,833.76
7	ALL UNIFIED DISTRICTS	82.14%	80.99%	9,941.30	38,263,541,622.10
8	ALL ELEMENTARY SCHOOL DISTRI	81.19%	79.74%	9,320.66	10,052,632,538.94
9	Templeton Unified	77.81%	76.87%	8,884.97	20,462,792.32
10	Cayucos Elementary	77.17%	74.32%	12,662.28	2,558,792.98
11	Pleasant Valley Jt Un Elementary	74.84%	74.84%	9,473.58	840,780.21
12	Coast Unified	73.42%	72.93%	15,569.58	9,557,073.94
13	Shandon Joint Unified	69.13%	68.97%	10,498.46	3,165,704.33

UNRESTRICTED PERSONNEL SALARY AND BENEFIT EXPENSES FOR 2016-17

1	Lucia Mar Unified	89.20%	89.20%	6,829.08	69,373,628.71
2	Templeton Unified	88.60%	87.01%	6,849.23	15,774,332.70
3	Paso Robles Joint Unified	87.31%	86.69%	7,108.89	46,885,120.10
4	COMPARATIVE GROUP	87.24%	86.60%	7,221.28	230,242,082.96
5	San Miguel Joint Un Elementary	86.53%	85.86%	7,583.77	4,370,070.54
6	ALL UNIFIED DISTRICTS	86.14%	84.63%	7,316.69	28,161,574,710.71
7	San Luis Coastal Unified	85.90%	84.60%	8,268.93	59,768,496.00
8	Atascadero Unified	85.76%	85.76%	6,491.48	28,758,703.44
9	ALL ELEMENTARY SCHOOL DISTRI	85.21%	83.32%	7,068.86	7,624,002,115.69
10	Cayucos Elementary	83.01%	79.18%	10,788.08	2,180,054.74
11	Shandon Joint Unified	82.27%	81.98%	8,337.45	2,514,075.18
12	Coast Unified	79.29%	78.62%	13,159.40	8,077,634.13
13	Pleasant Valley Jt Un Elementary	78.95%	78.95%	6,958.89	617,601.55

Due to inconsistencies in reporting charter school ADA and financial information, statewide average amounts per ADA may be impacted.

DISTRICT ADMINISTRATIVE SERVICES EXPENSE PER ADA FOR 2016-17
(Total of Function Codes 7000-7999)

Table 1

RANK	DISTRICT	District Admin Cost per ADA	% of Total General Fund Expense	Total District Admin Cost
1	Coast Unified	2,455.61	11.58%	1,507,325.52
2	Cayucos Elementary	2,259.38	13.77%	456,575.61
3	Pleasant Valley Jt Un Elementary	1,407.90	11.12%	124,951.50
4	Shandon Joint Unified	1,238.27	8.15%	373,386.68
5	San Miguel Joint Un Elementary	902.60	7.40%	520,115.73
6	Templeton Unified	874.83	7.66%	2,014,804.35
7	San Luis Coastal Unified	800.99	6.28%	5,789,593.19
8	ALL ELEMENTARY DISTRICTS	713.29	6.21%	769,308,061.98
9	COMPARATIVE GROUP	665.46	5.78%	21,217,368.97
10	ALL UNIFIED DISTRICTS	639.49	5.28%	2,461,381,421.28
11	Paso Robles Joint Unified	625.07	5.53%	4,122,512.36
12	Atascadero Unified	542.89	5.03%	2,405,115.97
13	Lucia Mar Unified	532.59	4.91%	5,410,313.58

Due to inconsistencies in reporting charter school ADA and financial information, statewide average amounts per ADA may be impacted.

INSTRUCTIONAL ADMINISTRATIVE SERVICES EXPENSE PER ADA FOR 2016-17
(Total of Function Codes 2100 to 2150)

Table 2

RANK	DISTRICT	District Instructional Cost per ADA	% of Total General Fund Expense	Total Instructional Admin Cost
1	San Luis Coastal Unified	576.99	4.53%	4,170,553.90
2	ALL UNIFIED DISTRICTS	514.44	4.25%	1,980,058,788.41
3	Paso Robles Joint Unified	501.40	4.43%	3,306,858.72
4	COMPARATIVE GROUP	365.57	3.17%	11,655,860.31
5	ALL ELEMENTARY DISTRICTS	344.93	3.00%	372,020,830.59
6	Pleasant Valley Jt Un Elementary	328.78	2.60%	29,178.97
7	San Miguel Joint Un Elementary	322.42	2.64%	185,791.29
8	Lucia Mar Unified	286.92	2.65%	2,914,646.36
9	Atascadero Unified	231.60	2.14%	1,026,037.49
10	Cayucos Elementary	98.09	0.60%	19,821.34
11	Templeton Unified	1.29	0.01%	2,972.24
12	Coast Unified	0.00	0.00%	0.00
13	Shandon Joint Unified	0.00	0.00%	0.00

Due to inconsistencies in reporting charter school ADA and financial information, statewide average amounts per ADA may be impacted.

SCHOOL ADMINISTRATIVE SERVICES EXPENSE PER ADA FOR 2016-17
(Total of Function Code 2700)

Table 3

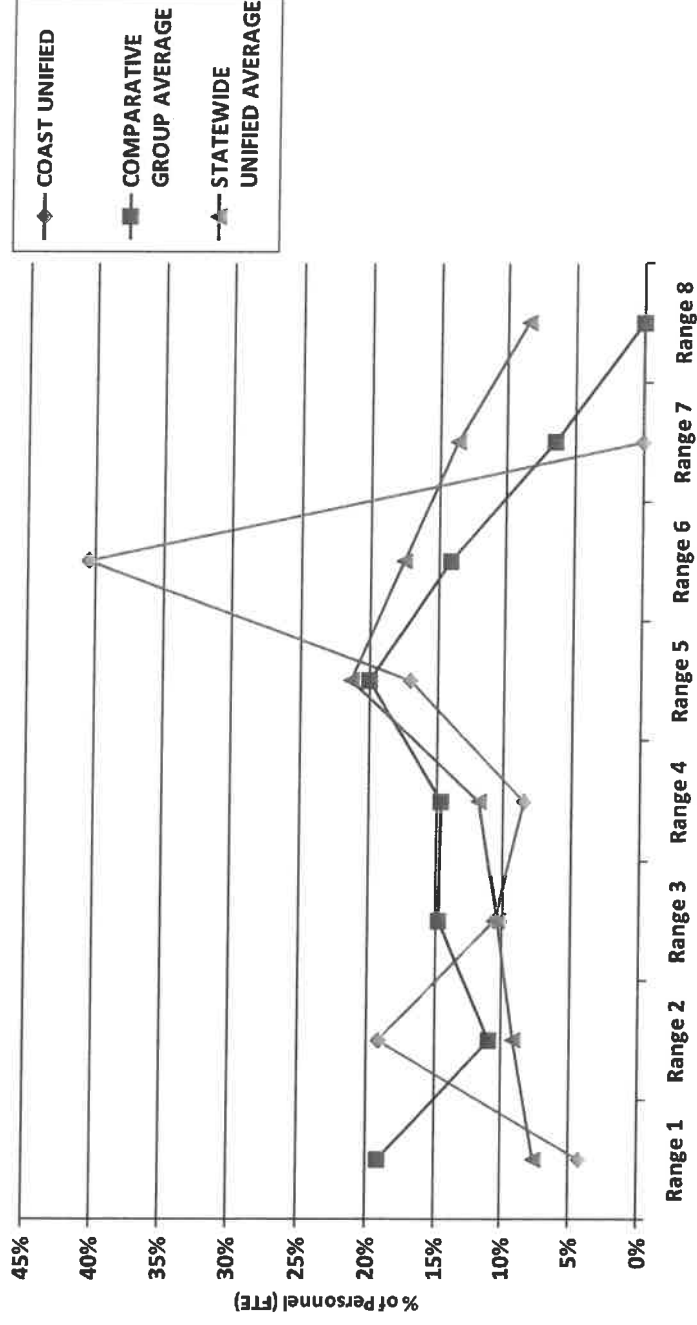
RANK	DISTRICT	School Admin Cost per ADA	% of Total General Fund Expense	Total School Admin Cost
1	Cayucos Elementary	1,492.25	9.09%	301,554.61
2	Coast Unified	1,487.13	7.01%	912,845.96
3	Shandon Joint Unified	1,271.39	8.37%	383,375.28
4	Pleasant Valley Jt Un Elementary	1,006.90	7.95%	89,362.17
5	Templeton Unified	913.69	8.00%	2,104,301.54
6	San Miguel Joint Un Elementary	889.85	7.29%	512,767.89
7	San Luis Coastal Unified	877.32	6.88%	6,341,365.45
8	ALL UNIFIED DISTRICTS	795.18	6.57%	3,060,593,033.10
9	COMPARATIVE GROUP	740.50	6.43%	23,610,005.61
10	Lucia Mar Unified	724.36	6.68%	7,358,503.16
11	ALL ELEMENTARY DISTRICTS	723.37	6.30%	780,179,770.01
12	Atascadero Unified	621.56	5.75%	2,753,626.16
13	Paso Robles Joint Unified	570.89	5.05%	3,765,149.35

Due to inconsistencies in reporting charter school ADA and financial information, statewide average amounts per ADA may be impacted.

COAST UNIFIED

Comparative Analysis of Certificated Salaries

2016-17 Salary Distribution

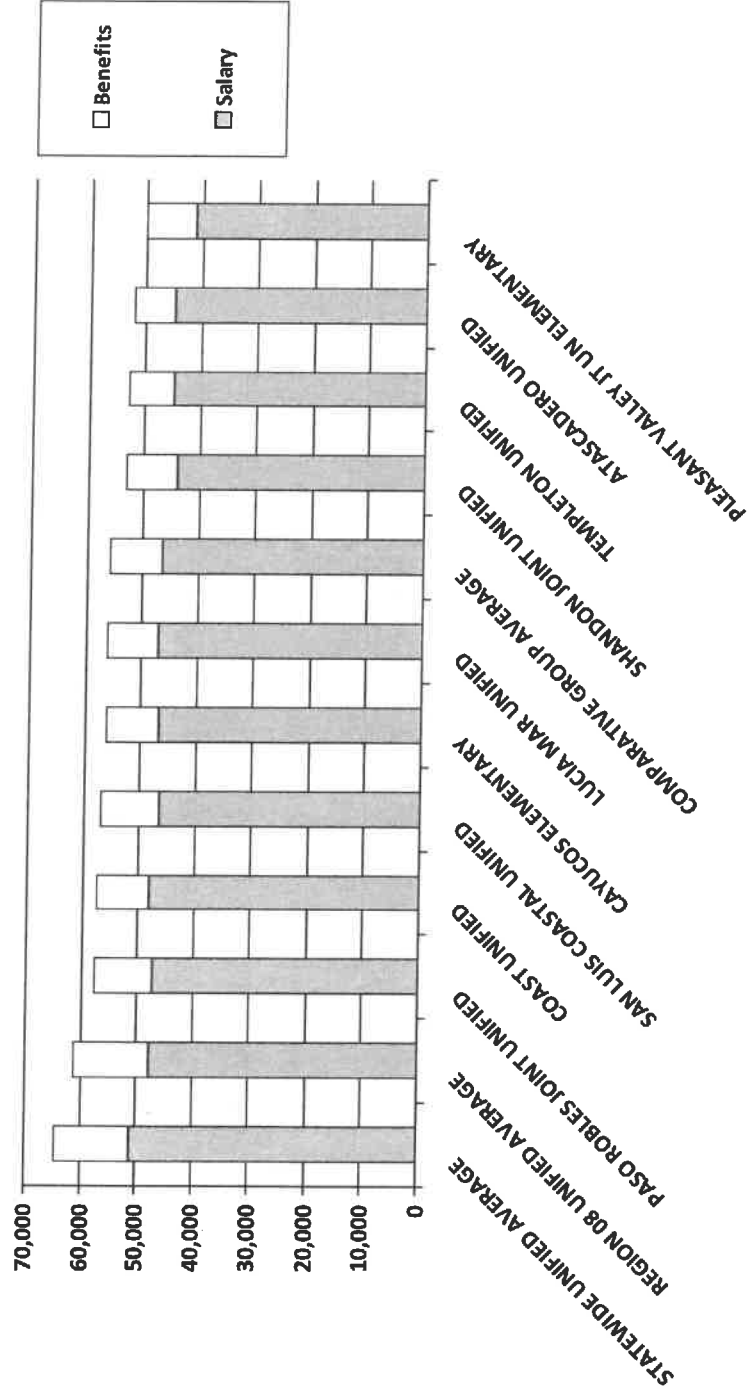


Ranges

1: Less than \$52,000	3: \$60,000 - \$68,000	5: \$76,000 - \$84,000	7: \$92,000 - \$100,000
2: \$52,000 - \$60,000	4: \$68,000 - \$76,000	6: \$84,000 - \$92,000	8: Greater than \$100,000

COAST UNIFIED

Total Compensation: BA+30, Step 1 and Average Health and Welfare Benefits, 2016-17

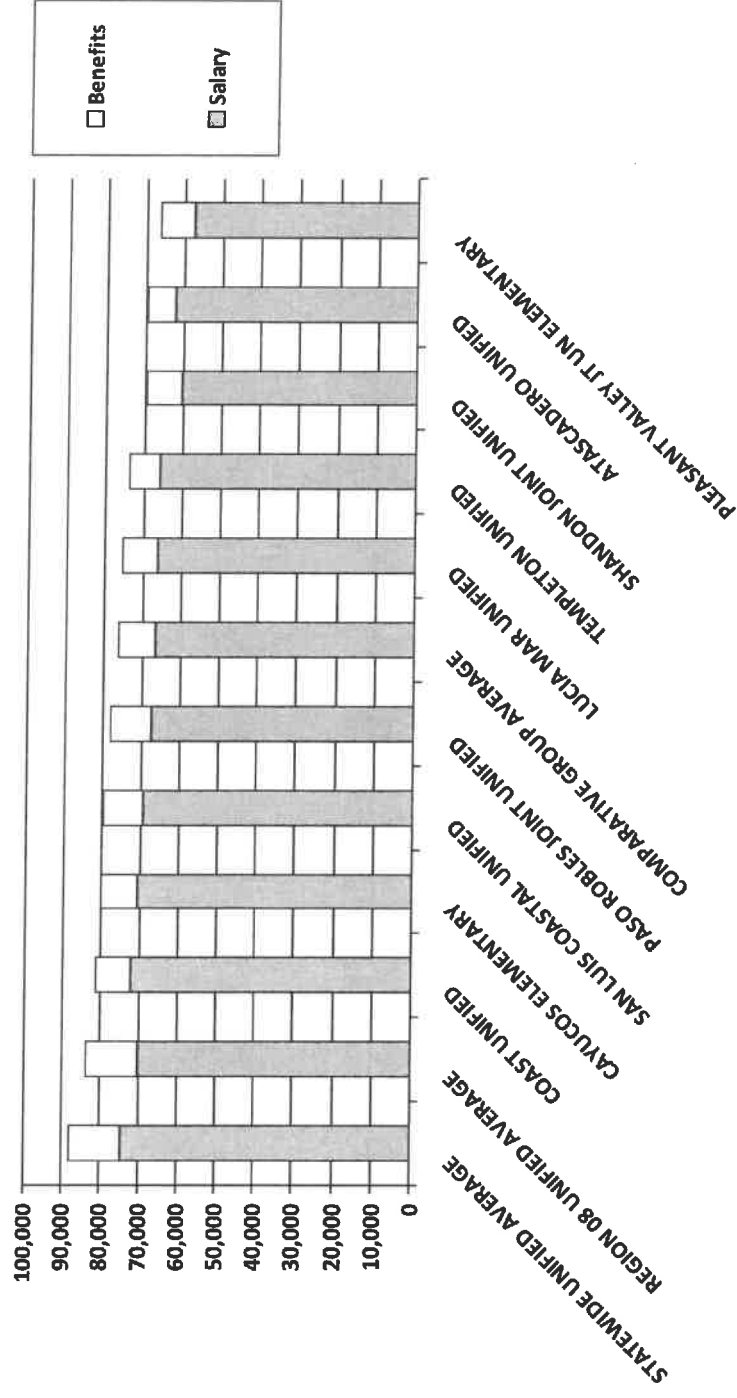


See Part II, Table 12 for compensation amounts

Graph 3

COAST UNIFIED

Total Compensation: BA+60, Step 10 and Average Health and Welfare Benefits, 2016-17

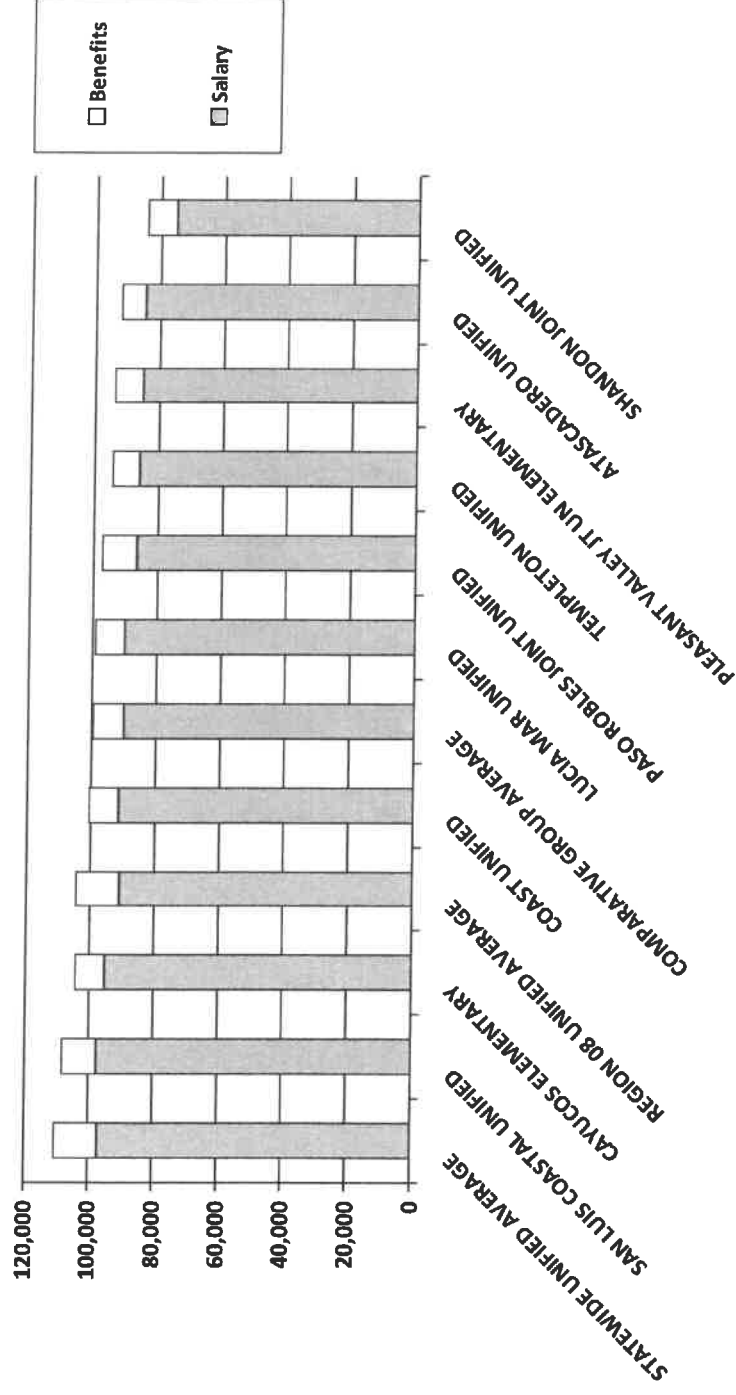


See Part II, Table 13 for compensation amounts

Graph 4

COAST UNIFIED

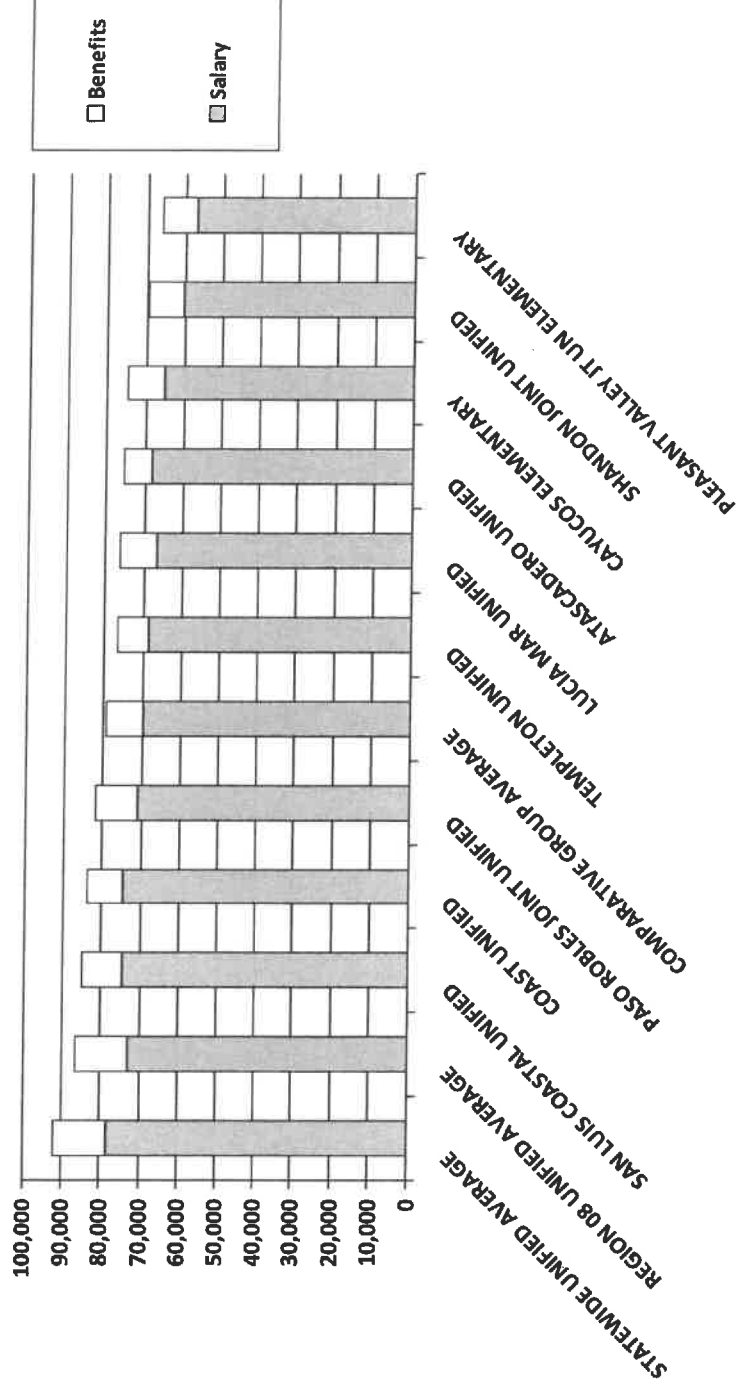
Total Compensation: Maximum Scheduled Salary and Average Health and Welfare Benefits, 2016-17



See Part II, Table 14 for compensation amounts

COAST UNIFIED

Total Compensation: Computed Average Salary and Average Health and Welfare Benefits, 2016-17



See Part II, Table 15 for compensation amounts

Graph 6

BOOKS AND SUPPLIES EXPENSE FOR 2016-17

Table 10

RANK	DISTRICT	Books & Supplies Per ADA	Books & Supplies Dollars	% of Total Expense	% of Total Expense, Transfers and Other Uses
1	Shandon Joint Unified	1,230.27	370,975.81	8.10%	8.08%
2	Coast Unified	1,158.94	711,392.08	5.47%	5.43%
3	Templeton Unified	906.66	2,088,106.31	7.94%	7.84%
4	Cayucos Elementary	700.15	141,486.24	4.27%	4.11%
5	Pleasant Valley Jt Un Elementary	676.07	60,000.91	5.34%	5.34%
6	Atascadero Unified	665.67	2,949,081.38	6.16%	6.14%
7	Lucia Mar Unified	637.30	6,474,066.43	5.88%	5.88%
8	COMPARATIVE GROUP	631.56	20,136,679.81	5.49%	5.45%
9	Paso Robles Joint Unified	608.84	4,015,457.13	5.38%	5.36%
10	ALL ELEMENTARY SCHOOL DISTRI	581.07	626,705,634.55	5.06%	4.97%
11	ALL UNIFIED DISTRICTS	570.51	2,195,864,335.11	4.71%	4.65%
12	San Miguel Joint Un Elementary	563.06	324,456.29	4.61%	4.59%
13	San Luis Coastal Unified	513.70	3,713,049.31	4.03%	3.98%

UNRESTRICTED BOOKS AND SUPPLIES EXPENSE FOR 2016-17

1	Coast Unified	664.73	408,028.47	4.01%	3.97%
2	Shandon Joint Unified	562.32	169,563.43	5.55%	5.53%
3	Pleasant Valley Jt Un Elementary	539.43	47,874.28	6.12%	6.12%
4	Cayucos Elementary	495.86	100,203.55	3.82%	3.64%
5	Atascadero Unified	486.79	2,156,573.92	6.43%	6.43%
6	San Miguel Joint Un Elementary	462.63	266,587.46	5.28%	5.24%
7	ALL ELEMENTARY SCHOOL DISTRI	396.64	427,792,219.46	4.78%	4.68%
8	COMPARATIVE GROUP	383.12	12,215,432.67	4.63%	4.59%
9	Lucia Mar Unified	370.43	3,763,013.09	4.84%	4.84%
10	Paso Robles Joint Unified	365.21	2,408,665.31	4.49%	4.45%
11	ALL UNIFIED DISTRICTS	360.25	1,386,582,033.67	4.24%	4.17%
12	San Luis Coastal Unified	360.13	2,603,047.84	3.74%	3.68%
13	Templeton Unified	303.90	699,903.79	3.93%	3.86%

Due to inconsistencies in reporting charter school ADA and financial information, statewide average amounts per ADA may be impacted.

SERVICES AND OTHER OPERATING EXPENSE FOR 2016-17

Table 11

RANK	DISTRICT	Services & Operations Per ADA	Services & Operations Dollars	% of Total Expense	% of Total Expense, Transfers and Other Uses
1	Coast Unified	2,633.14	1,616,301.05	12.42%	12.33%
2	Cayucos Elementary	2,524.39	510,128.91	15.38%	14.82%
3	Pleasant Valley Jt Un Elementary	2,274.76	201,884.92	17.97%	17.97%
4	Shandon Joint Unified	1,969.44	593,864.73	12.97%	12.94%
5	ALL UNIFIED DISTRICTS	1,289.92	4,964,819,294.94	10.66%	10.51%
6	ALL ELEMENTARY SCHOOL DISTRI	1,232.17	1,328,930,686.34	10.73%	10.54%
7	San Luis Coastal Unified	1,228.63	8,880,658.38	9.64%	9.53%
8	Paso Robles Joint Unified	1,144.86	7,550,680.48	10.12%	10.07%
9	COMPARATIVE GROUP	1,020.84	32,548,309.68	8.87%	8.82%
10	San Miguel Joint Un Elementary	994.90	573,302.52	8.15%	8.11%
11	Atascadero Unified	971.77	4,305,150.77	9.00%	8.97%
12	Templeton Unified	906.57	2,087,896.55	7.94%	7.84%
13	Lucia Mar Unified	772.23	7,844,742.42	7.12%	7.12%

UNRESTRICTED SERVICES AND OTHER OPERATING EXPENSE FOR 2016-17

1	Cayucos Elementary	1,786.81	361,077.58	13.75%	13.11%
2	Coast Unified	1,711.14	1,050,352.08	10.31%	10.22%
3	Pleasant Valley Jt Un Elementary	1,329.02	117,950.85	15.08%	15.08%
4	Shandon Joint Unified	1,124.55	339,098.26	11.10%	11.06%
5	San Luis Coastal Unified	911.11	6,585,571.28	9.47%	9.32%
6	San Miguel Joint Un Elementary	784.62	452,130.20	8.95%	8.88%
7	ALL ELEMENTARY SCHOOL DISTRI	739.95	798,063,339.68	8.92%	8.72%
8	ALL UNIFIED DISTRICTS	735.21	2,829,798,293.56	8.66%	8.50%
9	Paso Robles Joint Unified	710.14	4,683,579.45	8.72%	8.66%
10	Templeton Unified	677.92	1,561,313.50	8.77%	8.61%
11	COMPARATIVE GROUP	650.23	20,731,831.11	7.86%	7.80%
12	Atascadero Unified	634.08	2,809,101.62	8.38%	8.38%
13	Lucia Mar Unified	376.24	3,822,008.37	4.91%	4.91%

Due to inconsistencies in reporting charter school ADA and financial information, statewide average amounts per ADA may be impacted.

INSURANCE EXPENSE FOR 2016-17

Table 12

RANK	DISTRICT	Insurance Per ADA	Insurance Dollars	% of Total Expense	% of Total Expense, Transfers & Other Uses
1	Coast Unified	97.88	60,084.57	0.46%	0.46%
2	Shandon Joint Unified	80.60	24,303.46	0.53%	0.53%
3	Cayucos Elementary	74.90	15,134.88	0.46%	0.44%
4	San Miguel Joint Un Elementary	69.14	39,841.84	0.57%	0.56%
5	San Luis Coastal Unified	68.86	497,713.13	0.54%	0.53%
6	Pleasant Valley Jt Un Elementary	68.16	6,049.05	0.54%	0.54%
7	ALL UNIFIED DISTRICTS	60.87	234,301,579.25	0.50%	0.50%
8	COMPARATIVE GROUP	58.85	1,876,272.87	0.51%	0.51%
9	ALL ELEMENTARY SCHOOL DISTRI	58.13	62,694,440.83	0.51%	0.50%
10	Paso Robles Joint Unified	57.69	380,451.58	0.51%	0.51%
11	Atascadero Unified	56.15	248,750.80	0.52%	0.52%
12	Templeton Unified	53.71	123,690.62	0.47%	0.46%
13	Lucia Mar Unified	53.19	540,337.51	0.49%	0.49%

UNRESTRICTED INSURANCE EXPENSE FOR 2016-17

1	Coast Unified	94.67	58,111.57	0.57%	0.57%
2	Shandon Joint Unified	75.51	22,768.46	0.75%	0.74%
3	San Luis Coastal Unified	67.32	486,568.13	0.70%	0.69%
4	Cayucos Elementary	67.30	13,599.88	0.52%	0.49%
5	San Miguel Joint Un Elementary	65.72	37,868.84	0.75%	0.74%
6	ALL UNIFIED DISTRICTS	60.21	231,734,721.93	0.71%	0.70%
7	Pleasant Valley Jt Un Elementary	58.28	5,172.05	0.66%	0.66%
8	ALL ELEMENTARY SCHOOL DISTRI	57.19	61,676,933.63	0.69%	0.67%
9	Atascadero Unified	56.15	248,750.80	0.74%	0.74%
10	COMPARATIVE GROUP	55.79	1,778,781.17	0.67%	0.67%
11	Paso Robles Joint Unified	52.21	344,351.58	0.64%	0.64%
12	Lucia Mar Unified	50.43	512,258.61	0.66%	0.66%
13	Templeton Unified	46.65	107,442.82	0.60%	0.59%

Due to inconsistencies in reporting charter school ADA and financial information, statewide average amounts per ADA may be impacted.

UTILITY AND HOUSEKEEPING EXPENSE FOR 2016-17

RANK	DISTRICT	Utilities Per ADA	Utility Dollars	% of Total Expense	% of Total Expense, Transfers & Other Uses
1	Coast Unified	424.53	260,590.87	2.00%	1.99%
2	Cayucos Elementary	397.96	80,420.47	2.43%	2.34%
3	San Miguel Joint Un Elementary	322.73	185,970.44	2.64%	2.63%
4	Pleasant Valley Jt Un Elementary	307.65	27,304.35	2.43%	2.43%
5	Shandon Joint Unified	297.35	89,664.31	1.96%	1.95%
6	Paso Robles Joint Unified	278.40	1,836,116.32	2.46%	2.45%
7	San Luis Coastal Unified	273.36	1,975,843.27	2.14%	2.12%
8	Templeton Unified	246.57	567,868.93	2.16%	2.13%
9	Atascadero Unified	233.14	1,032,858.96	2.16%	2.15%
10	ALL UNIFIED DISTRICTS	230.62	887,626,598.90	1.91%	1.88%
11	COMPARATIVE GROUP	222.64	7,098,485.35	1.93%	1.92%
12	ALL ELEMENTARY SCHOOL DISTRI	211.13	227,713,071.17	1.84%	1.81%
13	Lucia Mar Unified	128.21	1,302,438.30	1.18%	1.18%

UNRESTRICTED UTILITY AND HOUSEKEEPING EXPENSE FOR 2016-17

1	Coast Unified	424.53	260,590.87	2.56%	2.54%
2	Cayucos Elementary	397.96	80,420.47	3.06%	2.92%
3	San Miguel Joint Un Elementary	322.73	185,970.44	3.68%	3.65%
4	Pleasant Valley Jt Un Elementary	307.65	27,304.35	3.49%	3.49%
5	Shandon Joint Unified	297.35	89,664.31	2.93%	2.92%
6	Paso Robles Joint Unified	277.41	1,829,596.95	3.41%	3.38%
7	San Luis Coastal Unified	266.49	1,926,216.44	2.77%	2.73%
8	Templeton Unified	235.95	543,417.54	3.05%	3.00%
9	Atascadero Unified	233.14	1,032,858.96	3.08%	3.08%
10	ALL UNIFIED DISTRICTS	227.93	877,309,988.79	2.68%	2.64%
11	COMPARATIVE GROUP	220.04	7,015,569.13	2.66%	2.64%
12	ALL ELEMENTARY SCHOOL DISTRI	209.16	225,590,626.48	2.52%	2.47%
13	Lucia Mar Unified	127.98	1,300,119.67	1.67%	1.67%

Due to inconsistencies in reporting charter school ADA and financial information, statewide average amounts per ADA may be impacted.

RENTAL, LEASES, AND REPAIRS EXPENSE FOR 2016-17

Table 14

RANK	DISTRICT	Rentals Per ADA	Rental Dollars	% of Total Expense	% of Total Expense, Transfers & Other Uses
1	<i>Coast Unified</i>	<i>432.14</i>	<i>265,258.23</i>	<i>2.04%</i>	<i>2.02%</i>
2	Pleasant Valley Jt Un Elementary	223.39	19,826.11	1.76%	1.76%
3	Templeton Unified	180.02	414,611.94	1.58%	1.56%
4	San Miguel Joint Un Elementary	156.46	90,157.86	1.28%	1.28%
5	Lucia Mar Unified	139.17	1,413,735.87	1.28%	1.28%
6	<i>ALL ELEMENTARY SCHOOL DISTRI</i>	<i>118.72</i>	<i>128,047,755.50</i>	<i>1.03%</i>	<i>1.02%</i>
7	<i>COMPARATIVE GROUP</i>	<i>109.34</i>	<i>3,486,281.51</i>	<i>0.95%</i>	<i>0.94%</i>
8	<i>ALL UNIFIED DISTRICTS</i>	<i>95.74</i>	<i>368,488,410.87</i>	<i>0.79%</i>	<i>0.78%</i>
9	San Luis Coastal Unified	88.72	641,301.30	0.70%	0.69%
10	Atascadero Unified	87.53	387,789.62	0.81%	0.81%
11	Cayucos Elementary	76.80	15,519.98	0.47%	0.45%
12	Paso Robles Joint Unified	74.48	491,206.71	0.66%	0.66%
13	Shandon Joint Unified	40.23	12,132.12	0.26%	0.26%

UNRESTRICTED RENTAL, LEASES, AND REPAIRS EXPENSE FOR 2016-17

1	<i>Coast Unified</i>	<i>179.66</i>	<i>110,281.32</i>	<i>1.08%</i>	<i>1.07%</i>
2	Pleasant Valley Jt Un Elementary	169.38	15,032.87	1.92%	1.92%
3	San Miguel Joint Un Elementary	156.46	90,157.86	1.79%	1.77%
4	Templeton Unified	120.21	276,857.80	1.55%	1.53%
5	Cayucos Elementary	76.80	15,519.98	0.59%	0.56%
6	San Luis Coastal Unified	75.19	543,501.07	0.78%	0.77%
7	<i>ALL ELEMENTARY SCHOOL DISTRI</i>	<i>66.93</i>	<i>72,181,646.59</i>	<i>0.81%</i>	<i>0.79%</i>
8	<i>COMPARATIVE GROUP</i>	<i>66.62</i>	<i>2,124,255.16</i>	<i>0.80%</i>	<i>0.80%</i>
9	<i>ALL UNIFIED DISTRICTS</i>	<i>58.48</i>	<i>225,076,908.68</i>	<i>0.69%</i>	<i>0.68%</i>
10	Paso Robles Joint Unified	57.33	378,111.25	0.70%	0.70%
11	Atascadero Unified	55.28	244,889.72	0.73%	0.73%
12	Lucia Mar Unified	53.95	548,052.49	0.70%	0.70%
13	Shandon Joint Unified	40.23	12,132.12	0.40%	0.40%

Due to inconsistencies in reporting charter school ADA and financial information, statewide average amounts per ADA may be impacted.

CAPITAL OUTLAY EXPENSE FOR 2016-17

RANK	DISTRICT	Capital Outlay Per ADA	Capital Outlay Dollars	% of Total Expense	% of Total Expense, Transfers & Other Uses
1	Coast Unified	1,316.50	808,109.37	6.21%	6.17%
2	Templeton Unified	617.63	1,422,452.96	5.41%	5.34%
3	Shandon Joint Unified	332.31	100,204.85	2.19%	2.18%
4	Pleasant Valley Jt Un Elementary	221.25	19,635.99	1.75%	1.75%
5	San Luis Coastal Unified	199.47	1,441,765.32	1.56%	1.55%
6	ALL UNIFIED DISTRICTS	173.74	668,727,771.37	1.44%	1.42%
7	ALL ELEMENTARY SCHOOL DISTRI	146.93	158,469,145.89	1.28%	1.26%
8	COMPARATIVE GROUP	141.75	4,519,664.80	1.23%	1.22%
9	Lucia Mar Unified	101.13	1,027,332.14	0.93%	0.93%
10	Atascadero Unified	85.42	378,420.08	0.79%	0.79%
11	Paso Robles Joint Unified	19.17	126,431.11	0.17%	0.17%
12	Cayucos Elementary	16.94	3,422.35	0.10%	0.10%
13	San Miguel Joint Un Elementary	0.00	0.00	0.00%	0.00%

UNRESTRICTED CAPITAL OUTLAY EXPENSE FOR 2016-17

1	Coast Unified	1,154.89	708,907.47	6.96%	6.90%
2	Shandon Joint Unified	193.29	58,284.60	1.91%	1.90%
3	San Luis Coastal Unified	93.21	673,738.10	0.97%	0.95%
4	ALL UNIFIED DISTRICTS	83.23	320,356,052.68	0.98%	0.96%
5	ALL ELEMENTARY SCHOOL DISTRI	78.49	84,659,049.37	0.95%	0.93%
6	Atascadero Unified	77.46	343,177.40	1.02%	1.02%
7	COMPARATIVE GROUP	39.56	1,261,323.61	0.48%	0.47%
8	Templeton Unified	17.43	40,154.12	0.23%	0.22%
9	Lucia Mar Unified	11.21	113,896.55	0.15%	0.15%
10	Paso Robles Joint Unified	4.86	32,072.84	0.06%	0.06%
11	San Miguel Joint Un Elementary	0.00	0.00	0.00%	0.00%
12	Pleasant Valley Jt Un Elementary	0.00	0.00	0.00%	0.00%
13	Cayucos Elementary	0.00	0.00	0.00%	0.00%

Due to inconsistencies in reporting charter school ADA and financial information, statewide average amounts per ADA may be impacted.

LAND, BUILDINGS, AND BOOKS AND MEDIA EXPENSES FOR 2016-17

RANK	DISTRICT	Non-Equipment Capital per ADA	Non-Equipment Capital Dollars	% of Total Expense	% of Total Expense, Transfers & Other Uses
1	Coast Unified	1,297.93	796,709.37	6.12%	6.08%
2	Templeton Unified	237.66	547,340.89	2.08%	2.06%
3	Pleasant Valley Jt Un Elementary	221.25	19,635.99	1.75%	1.75%
4	Shandon Joint Unified	123.28	37,175.00	0.81%	0.81%
5	ALL UNIFIED DISTRICTS	110.12	423,858,699.69	0.91%	0.90%
6	ALL ELEMENTARY SCHOOL DISTRI	93.31	100,640,275.97	0.81%	0.80%
7	Lucia Mar Unified	58.05	589,691.32	0.54%	0.54%
8	San Luis Coastal Unified	54.11	391,113.43	0.42%	0.42%
9	COMPARATIVE GROUP	52.22	1,665,083.35	0.45%	0.45%
10	Atascadero Unified	17.13	75,894.37	0.16%	0.16%
11	Cayucos Elementary	16.94	3,422.35	0.10%	0.10%
12	Paso Robles Joint Unified	0.12	810.00	0.00%	0.00%
13	San Miguel Joint Un Elementary	0.00	0.00	0.00%	0.00%

UNRESTRICTED LAND, BUILDINGS, AND BOOKS AND MEDIA EXPENSES FOR 2016-17

1	Coast Unified	1,154.89	708,907.47	6.96%	6.90%
2	ALL ELEMENTARY SCHOOL DISTRI	43.32	46,721,992.73	0.52%	0.51%
3	ALL UNIFIED DISTRICTS	42.20	162,409,783.33	0.50%	0.49%
4	Atascadero Unified	15.84	70,194.37	0.21%	0.21%
5	Shandon Joint Unified	7.54	2,275.00	0.07%	0.07%
6	Templeton Unified	3.95	9,090.03	0.05%	0.05%
7	COMPARATIVE GROUP	3.18	101,459.40	0.04%	0.04%
8	San Luis Coastal Unified	1.37	9,900.00	0.01%	0.01%
9	Lucia Mar Unified	0.98	10,000.00	0.01%	0.01%
10	Paso Robles Joint Unified	0.00	0.00	0.00%	0.00%
11	San Miguel Joint Un Elementary	0.00	0.00	0.00%	0.00%
12	Pleasant Valley Jt Un Elementary	0.00	0.00	0.00%	0.00%
13	Cayucos Elementary	0.00	0.00	0.00%	0.00%

Due to inconsistencies in reporting charter school ADA and financial information, statewide average amounts per ADA may be impacted.

OTHER OUTGO EXPENSE FOR 2016-17
(Total of Object Codes 7000 through 7499)

RANK	DISTRICT	All Other Per ADA	All Other Dollars	% of Total Expense	% of Total Expense, Transfers & Other Uses
1	Shandon Joint Unified	1,155.53	348,439.63	7.61%	7.59%
2	Coast Unified	528.34	324,310.34	2.49%	2.47%
3	Cayucos Elementary	505.56	102,163.15	3.08%	2.97%
4	San Miguel Joint Un Elementary	495.12	285,309.48	4.06%	4.04%
5	Lucia Mar Unified	232.83	2,365,206.37	2.15%	2.15%
6	ALL ELEMENTARY SCHOOL DISTRI	199.33	214,979,016.85	1.74%	1.71%
7	COMPARATIVE GROUP	176.14	5,616,063.45	1.53%	1.52%
8	Atascadero Unified	162.83	721,361.75	1.51%	1.50%
9	Paso Robles Joint Unified	137.45	906,507.38	1.22%	1.21%
10	ALL UNIFIED DISTRICTS	127.35	490,144,466.77	1.05%	1.04%
11	Templeton Unified	102.42	235,888.11	0.90%	0.89%
12	San Luis Coastal Unified	89.93	649,990.28	0.71%	0.70%
13	Pleasant Valley Jt Un Elementary	13.49	1,197.30	0.11%	0.11%

UNRESTRICTED OTHER OUTGO EXPENSE FOR 2016-17

1	Lucia Mar Unified	69.13	702,285.95	0.90%	0.90%
2	ALL ELEMENTARY SCHOOL DISTRI	11.42	12,319,182.55	0.14%	0.13%
3	ALL UNIFIED DISTRICTS	-1.13	-4,350,380.99	-0.01%	-0.01%
4	San Luis Coastal Unified	-7.64	-55,248.85	-0.08%	-0.08%
5	Pleasant Valley Jt Un Elementary	-12.73	-1,129.70	-0.14%	-0.14%
6	COMPARATIVE GROUP	-17.11	-545,682.93	-0.21%	-0.21%
7	Paso Robles Joint Unified	-46.56	-307,081.55	-0.57%	-0.57%
8	San Miguel Joint Un Elementary	-66.59	-38,372.62	-0.76%	-0.75%
9	Cayucos Elementary	-75.25	-15,207.41	-0.58%	-0.55%
10	Shandon Joint Unified	-83.65	-25,223.03	-0.83%	-0.82%
11	Coast Unified	-93.14	-57,174.00	-0.56%	-0.56%
12	Templeton Unified	-117.72	-271,122.24	-1.52%	-1.50%
13	Atascadero Unified	-120.67	-534,583.48	-1.59%	-1.59%

Due to inconsistencies in reporting charter school ADA and financial information, statewide average amounts per ADA may be impacted.

TOTAL EXPENDITURES OF THE DISTRICT FOR 2016-17

RANK	DISTRICT	Total Expense per ADA	Total Expense Dollars	Total Expense, Transfers & Other Uses per ADA	Total Expense, Transfers & Other Uses Dollars
1	Coast Unified	21,206.50	13,017,186.78	21,347.35	13,103,642.67
2	Cayucos Elementary	16,409.31	3,315,993.63	17,037.99	3,443,036.33
3	Shandon Joint Unified	15,186.01	4,579,189.35	15,222.57	4,590,213.04
4	San Luis Coastal Unified	12,749.73	92,156,094.08	12,897.77	93,226,094.08
5	Pleasant Valley Jt Un Elementary	12,659.15	1,123,499.33	12,659.15	1,123,499.33
6	San Miguel Joint Un Elementary	12,201.89	7,031,219.60	12,270.50	7,070,751.46
7	ALL UNIFIED DISTRICTS	12,102.81	46,583,097,490.29	12,274.82	47,245,167,969.85
8	COMPARATIVE GROUP	11,514.29	367,119,622.17	11,580.61	369,234,119.39
9	ALL ELEMENTARY SCHOOL DISTRI	11,480.15	12,381,717,022.57	11,689.30	12,607,293,186.87
10	Templeton Unified	11,418.25	26,297,136.25	11,559.12	26,621,574.55
11	Paso Robles Joint Unified	11,307.60	74,576,758.61	11,365.59	74,959,219.28
12	Lucia Mar Unified	10,846.01	110,179,883.58	10,846.01	110,179,883.58
13	Atascadero Unified	10,803.04	47,859,847.74	10,839.16	48,019,847.74

TOTAL UNRESTRICTED EXPENDITURES OF THE DISTRICT EXPENSE FOR 2016-17

1	Coast Unified	16,597.02	10,187,748.15	16,737.87	10,274,204.04
2	Cayucos Elementary	12,995.49	2,626,128.46	13,624.16	2,753,171.16
3	Shandon Joint Unified	10,133.97	3,055,798.44	10,170.53	3,066,822.13
4	San Luis Coastal Unified	9,625.74	69,575,604.37	9,773.77	70,645,604.37
5	Pleasant Valley Jt Un Elementary	8,814.61	782,296.98	8,814.61	782,296.98
6	San Miguel Joint Un Elementary	8,764.43	5,050,415.58	8,833.03	5,089,947.44
7	ALL UNIFIED DISTRICTS	8,494.26	32,693,960,709.63	8,645.41	33,275,728,118.43
8	ALL ELEMENTARY SCHOOL DISTRI	8,295.38	8,946,835,906.75	8,483.54	9,149,777,391.55
9	COMPARATIVE GROUP	8,277.08	263,904,987.42	8,338.38	265,859,484.64
10	Paso Robles Joint Unified	8,142.54	53,702,356.15	8,200.53	54,084,816.82
11	Templeton Unified	7,730.77	17,804,581.87	7,871.64	18,129,020.17
12	Lucia Mar Unified	7,656.09	77,774,832.67	7,656.09	77,774,832.67
13	Atascadero Unified	7,569.14	33,532,972.90	7,569.14	33,532,972.90

Due to inconsistencies in reporting charter school ADA and financial information, statewide average amounts per ADA may be impacted.

TOTAL NET ENDING BALANCE FOR 2016-17

RANK	DISTRICT	Net Ending Balance per ADA	% of Total Expense	% of Total Expense, Transfers & Other Uses	Net Ending Balance
1	Pleasant Valley Jt Un Elementary	7,141.98	56.42%	56.42%	633,850.41
2	Cayucos Elementary	5,076.76	30.94%	29.80%	1,025,911.25
3	Coast Unified	2,963.55	13.97%	13.88%	1,819,113.96
4	ALL ELEMENTARY SCHOOL DISTRI	2,626.09	22.88%	22.47%	2,832,318,773.07
5	ALL UNIFIED DISTRICTS	2,395.86	19.80%	19.52%	9,221,557,775.15
6	San Luis Coastal Unified	2,280.37	17.89%	17.68%	16,482,714.11
7	Lucia Mar Unified	2,278.79	21.01%	21.01%	23,149,184.47
8	Shandon Joint Unified	2,246.51	14.79%	14.76%	677,412.66
9	COMPARATIVE GROUP	1,765.87	15.34%	15.25%	56,302,596.48
10	Templeton Unified	1,694.51	14.84%	14.66%	3,902,595.79
11	San Miguel Joint Un Elementary	1,320.18	10.82%	10.76%	760,742.02
12	Atascadero Unified	907.70	8.40%	8.37%	4,021,295.63
13	Paso Robles Joint Unified	856.50	7.57%	7.54%	5,648,890.14

UNRESTRICTED NET ENDING BALANCE FOR 2016-17

1	Pleasant Valley Jt Un Elementary	6,758.04	76.67%	76.67%	599,776.24
2	Cayucos Elementary	3,683.92	28.35%	27.04%	744,446.58
3	Coast Unified	2,386.06	14.38%	14.26%	1,464,636.13
4	ALL ELEMENTARY SCHOOL DISTRI	2,260.56	27.25%	26.65%	2,438,090,383.59
5	Shandon Joint Unified	2,139.47	21.11%	21.04%	645,134.57
6	San Luis Coastal Unified	2,100.53	21.82%	21.49%	15,182,831.23
7	ALL UNIFIED DISTRICTS	2,003.18	23.58%	23.17%	7,710,147,507.96
8	Lucia Mar Unified	1,979.10	25.85%	25.85%	20,104,817.86
9	COMPARATIVE GROUP	1,528.05	18.46%	18.33%	48,720,110.25
10	San Miguel Joint Un Elementary	1,230.59	14.04%	13.93%	709,115.03
11	Templeton Unified	1,177.62	15.23%	14.96%	2,712,153.03
12	Atascadero Unified	798.51	10.55%	10.55%	3,537,563.17
13	Paso Robles Joint Unified	679.92	8.35%	8.29%	4,484,272.54

Due to inconsistencies in reporting charter school ADA and financial information, statewide average amounts per ADA may be impacted.