



Spring Woods High School Additions and Renovations

PAT Meeting No. 04

Spring Branch Independent School District \\ Houston, Texas \\ October 4th, 2018



PAT Meeting #04 (12:00pm to 1:30pm)

- Project Recap
- Dining Commons design development
- Learning Center design development
- Commons Plaza design development
- Next Steps
- Meeting Adjourned at 1:30pm

Project Recap



PAT 01

08-31-2018

KICK-OFF

- Gather Data
- Start Design



PAT 02

09-13-2018

Schematic Design

- Layout Options
- Library Services
- Nutrition Services



PAT 03

09-27-2018

Final Schematic Design

- Refine Layout
- Start Interior Concepts

PAT 04

10-04-2018

Design Development

- Review Interior and plans
- Library Services
- Nutrition Services

PAT 05

10-25-2018

Final Design Develp.

- Finalize Overall Design
- Review Interior Finishes and colors

PAT 06

12-18-2018

Final Design Review

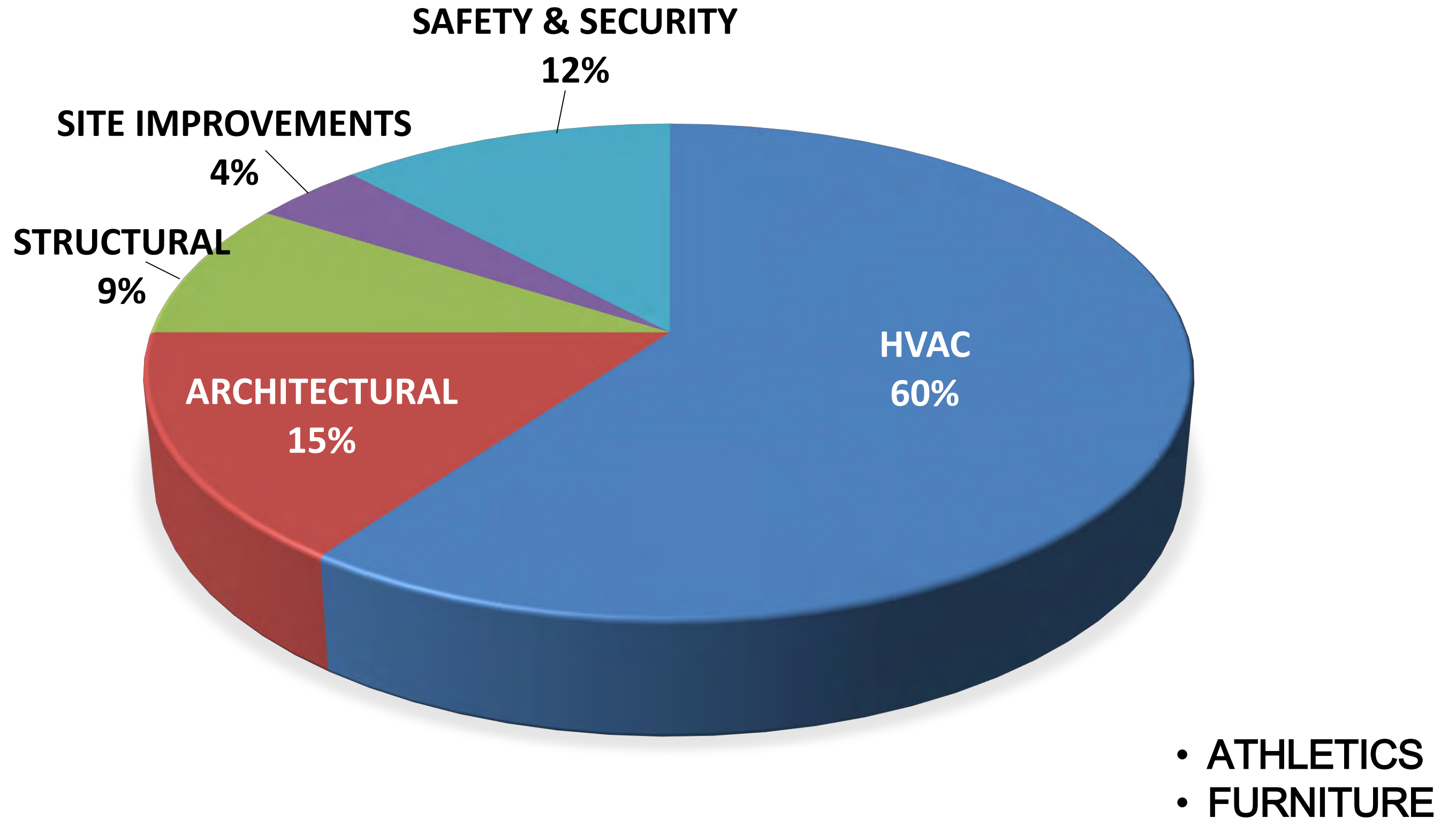
- Review Overall Design
- Review Budget
- Review Finishes

Goal

The goal of the PAT is to ensure that parents, staff and community members have the opportunity to take part in the planning and design of new schools. The PAT members will **serve as communicators** to and from the community during the schematic design and development phases of the project and participate in discussions that will lead to recommendations. The PAT concludes its work once construction begins.

Charge

Each Project Advisory Team's (PAT) members are charged with **providing input into planning and design development** for their school's new construction or major renovation project in the 2017 Bond Program. The PAT will meet as needed throughout the project, from initial planning, through design to the start of construction. Meeting agendas and minutes will be posted on the school's bond project website.





- ENTRY – EXIT ISSUES
- PRIORITY 1: **STUDENT FLOW**
- PRIORITY 2: STUDENT SEATING
- **IMPROVE STUDENT QUEUING**
- RELOCATE ENTRY POINTS
- USE EXISTING TEACHER LOUNGE
- REMOVE EXTERIOR STAIRWAY
- **SINGLE LUNCH A POSITIVE**
- INCREASE LUNCH PERIODS
- MAXIMIZE DAYLIGHT

On behalf of the entire **PRK** Team, we thank you for this opportunity!
"With You Not To You" - SWHS

LIBRARY VISIONING IDEAS

- How do you see the functionality of the Library?
- How is the access to the Library?
- Is there a need to define a main entry on the 2nd floor?
- Does the Library need more "social" areas?
- Does the Library need more "individual" areas?
- Issues with HVAC and Lighting?

Sentiments About The Space

- Define a main entry on 2nd floor of space?
- Define a main entry on 2nd floor of space?
- Social areas of group areas on 2nd floor
- Small personal space on 2nd floor
- First level of entry - open of light, "safe" tables, social
- Second floor - individual
- upstairs - group spaces (larger group)
- downstairs - small

LIBRARY - 1ST FLOOR

On behalf of the entire **PRK** Team, we thank you for this opportunity!
"With You Not To You" - SWHS

LIBRARY VISIONING IDEAS

- How do you see the functionality of the Library?
- How is the access to the Library?
- Is there a need to define a main entry on the 2nd floor?
- Does the Library need more "social" areas?
- Does the Library need more "individual" areas?
- Issues with HVAC and Lighting?

Sentiments About The Space

- Access to "tools" to inspire & develop ideas.
- Reference materials to access historical & research writings / images

LIBRARY - 1ST FLOOR

On behalf of the entire **PRK** Team, we thank you for this opportunity!
"With You Not To You" - SWHS

LIBRARY VISIONING IDEAS

- How do you see the functionality of the Library?
- How is the access to the Library?
- Is there a need to define a main entry on the 2nd floor?
- Does the Library need more "social" areas?
- Does the Library need more "individual" areas?
- Issues with HVAC and Lighting?

Sentiments About The Space

- Dining Commons & Library: They need more "definition" to identify them as "lunch room" & "library room"
- Stair by dining area → it's on the way. Area needs better flow inside.
- Stair to library access 2nd floor → wind/dark feeling of "do not go up". More lighting & shared spaces (couches & where feeling)

LIBRARY - 1ST FLOOR

LIBRARY - 2ND FLOOR

DINING COMMONS VISIONING IDEAS

- Is there a student flow issue?
- Is there a need for additional seating?
- How is the front entry to the Commons?
- Is the stair "in the way"?
- How is the entry to the serving area?
- Issues with HVAC and Lighting?

DINING COMMONS

11 Greenway Plaza
21st Floor
Houston, Texas 77240
800.538.7272
PRK.com



- On behalf of the entire **PRK** Team, we thank you for this opportunity!
"With You Not To You" - SWHS

LIBRARY VISIONING IDEAS

 - How do you see the functionality of the Library? *It's a good space, it's in flux w/ 1st.*
 - How is the access to the Library? *Very good.*
 - Is there a need to define a main entry on the 2nd floor? *No, it's!*
 - Does the Library need more "social" areas? *Not more, but defined spaces.*
 - Does the Library need more "individual" areas? *Flexibility.*
 - Issues with HVAC and Lighting? *It's cold. Lighting to parkade.*

Sentiments About The Space

Library wish list →

 - updated furniture*
 - remote window blinds*
 - larger circulation desk*
 - updated active boards w/ software*
 - bookend study - library*

LIBRARY - 1ST FLOOR

On behalf of the entire **PRK** Team, we thank you for this opportunity!
"With You Not To You" - SWHS

LIBRARY VISIONING IDEAS

 - How do you see the functionality of the Library?
 - How is the access to the Library?
 - Is there a need to define a main entry on the 2nd floor?
 - Does the Library need more "social" areas?
 - Does the Library need more "individual" areas?
 - Issues with HVAC and Lighting?

Sentiments About The Space

Love the natural light!

Current ground floor second floor is a spatial mixture separating second floor from ground floor. Needs more natural light. Needs more individual space. Needs more social space. Needs more individual space. Needs more social space.

LIBRARY - 1ST FLOOR

On behalf of the entire **PRK** Team, we thank you for this opportunity!
"With You Not To You" - SWHS

LIBRARY VISIONING IDEAS

 - How do you see the functionality of the Library?
 - How is the access to the Library?
 - Is there a need to define a main entry on the 2nd floor?
 - Does the Library need more "social" areas?
 - Does the Library need more "individual" areas?
 - Issues with HVAC and Lighting?

Sentiments About The Space

Library - need 2nd story entry - overall. Could need renovations so that classes that are using the library are not disturb when other enter.

- needs a media area for student use

- love the natural light but not the sound

- library needs more signage of area

- move extract offices out and use the space for student centers

Cafeteria

- yes there is a school fly issue, and a need for more seating

- Is it possible to make it two stories by removing the class rooms

- make more inviting

LIBRARY - 1ST FLOOR

LIBRARY - 2ND FLOOR

DINING COMMONS VISIONING IDEAS

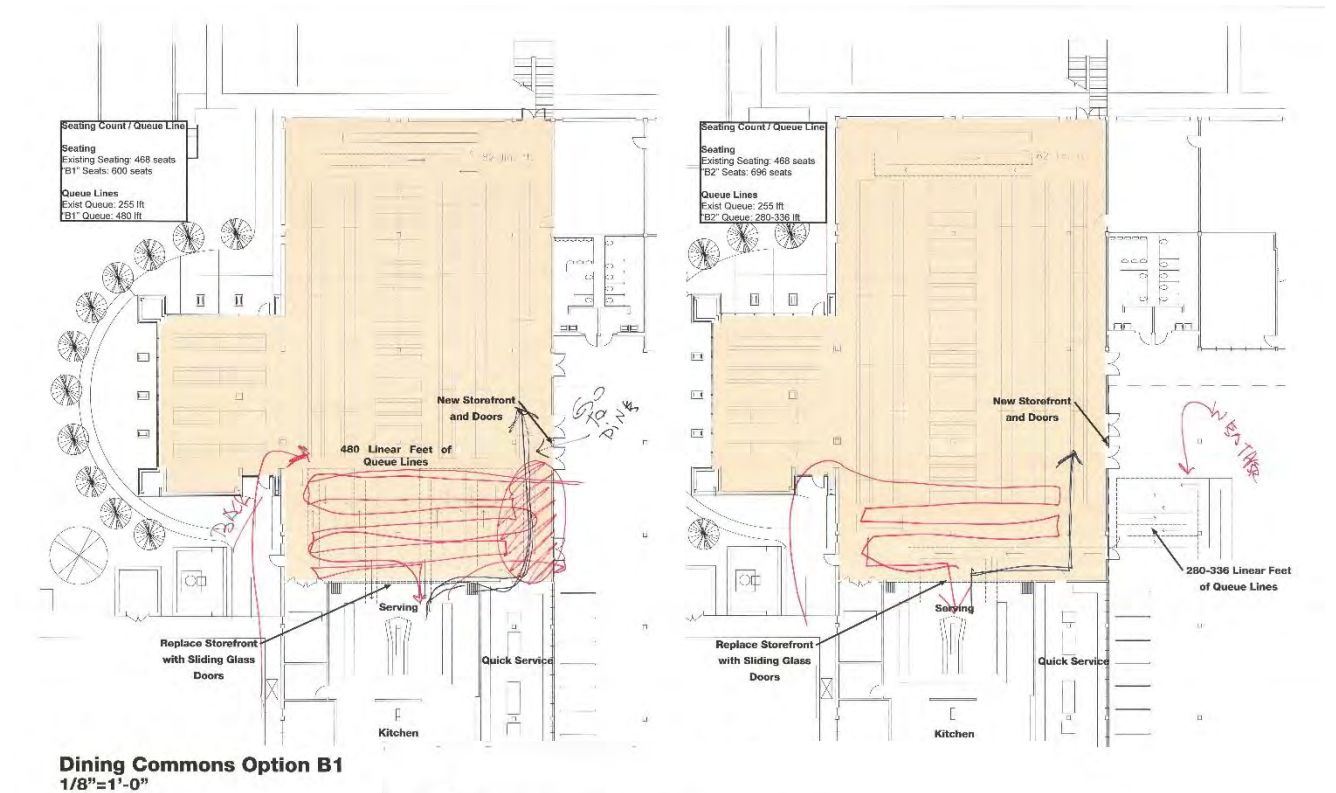
 - Is there a student flow issue? *Lines block doors*
 - Is there a need for additional seating?
 - How is the front entry to the Commons?
 - Is the stair "in the way"? *yes - remove staircase*
 - How is the entry to the serving area? *- blocked w/ traffic*
 - Issues with HVAC and Lighting? *- throughout the building*

DINING COMMONS

PRK

116 Gateway Park
 2nd Floor
 Houston, Texas 77065
 800.938.7272
 PRK.com

- Need **queue line control** system
- Have **one queue line** instead of two
- Capture **maximum expansion** as possible
- **Expand Commons** into hallway and under balcony
- **Repurpose classroom** for Commons
- Add more **daylight**
- Variety of seating (as possible)
- Keep looking into reshaping serving lines



SPRING WOODS HIGH SC
SPRING BRANCH INDEPENDENT SC

— CONSIDER QUEUE OUTSIDE
FUNCTION, FEEL, ETC. PRO/CON

UT OPTIONS **PRK**

— NEED PERMANENT QUEUE LINES
(ARROWS OR FLOOR PAINT MARK)

— FORCE PEDESTRIAN TRAFFIC ACROSS CAFE
ENERGIZE "BACK"

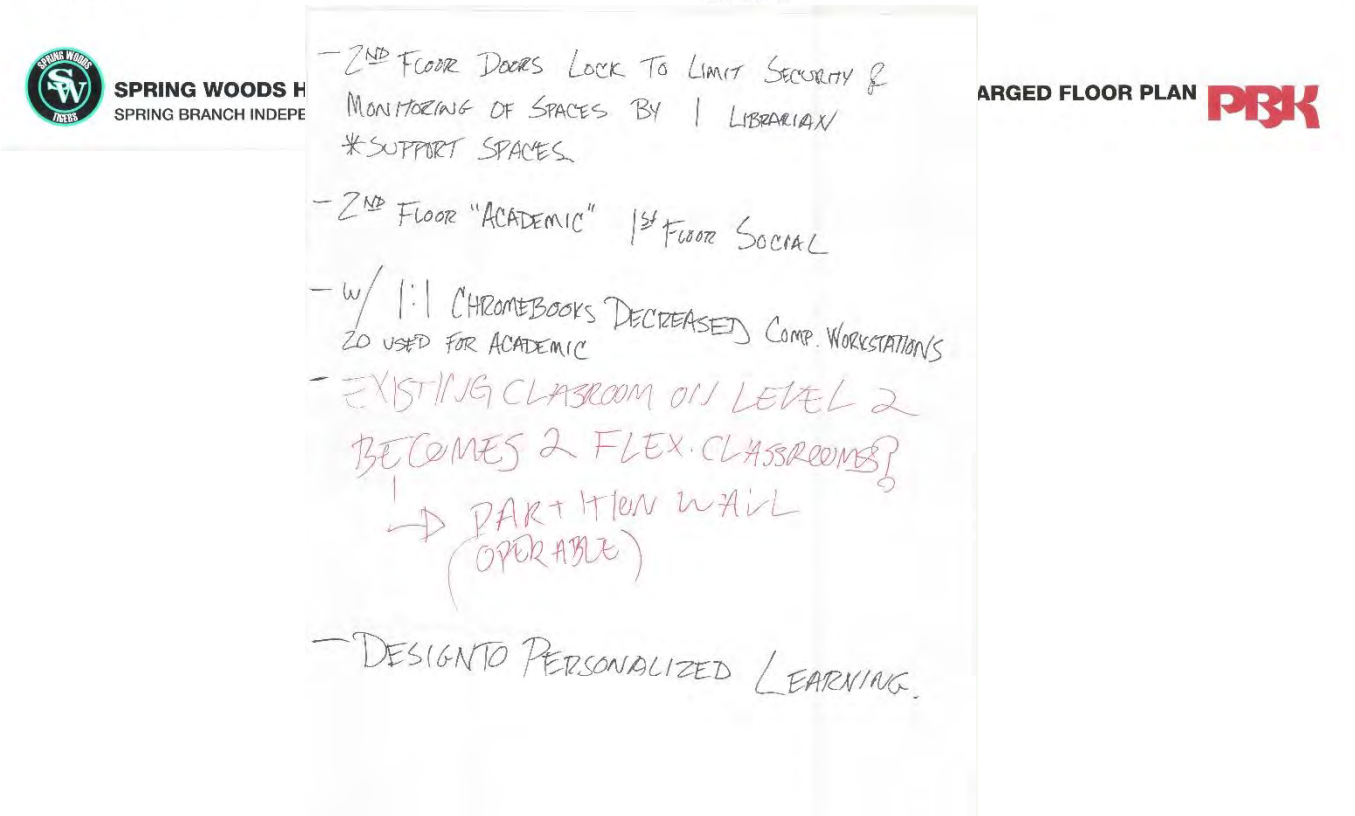
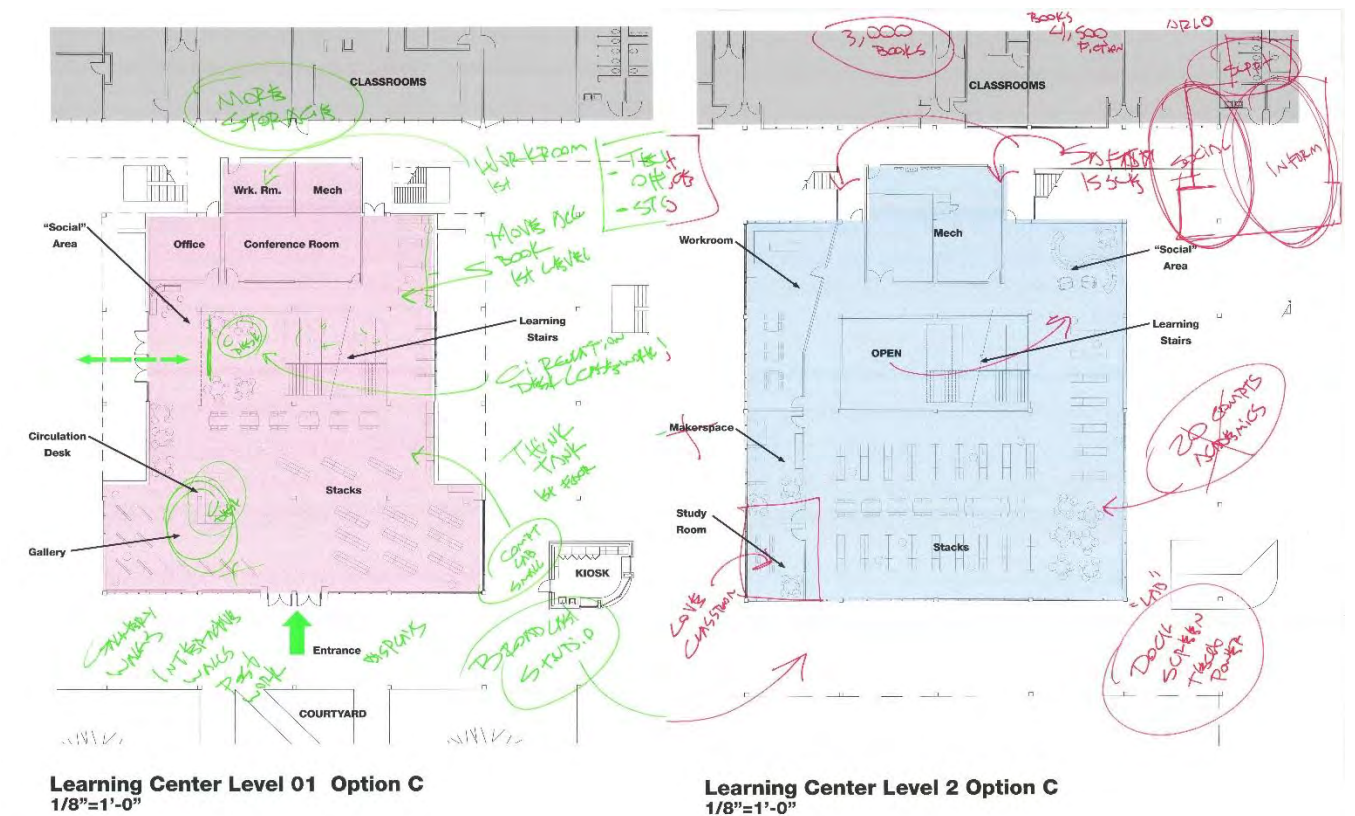
— SPLIT LINES FOR SPEED

— ENSURE SPACE AT DOORS IS AVAIL./OPEN
EXTEND LINES FARTHER WITHIN SPACE

— BACK ENTRY HELPS DISCHARGE TO COURTYARD

— CAPTURING MAX. EXPANSION BOTH SIDES DESIRED

- Move all **books to 1st Level**
- Have circulation desk **close to entrances**
- No Makerspace
- **“Computer room” 1st Level**
- **Flexible Classrooms 2nd Level**
- Lack of supervision at 2nd Level
- Need **Tech office 1st Level**
- **Workroom 1st Level**
- **Broadcast room 2nd Level**
- Liked **“Learning Stair”**



Dining Commons Design Development

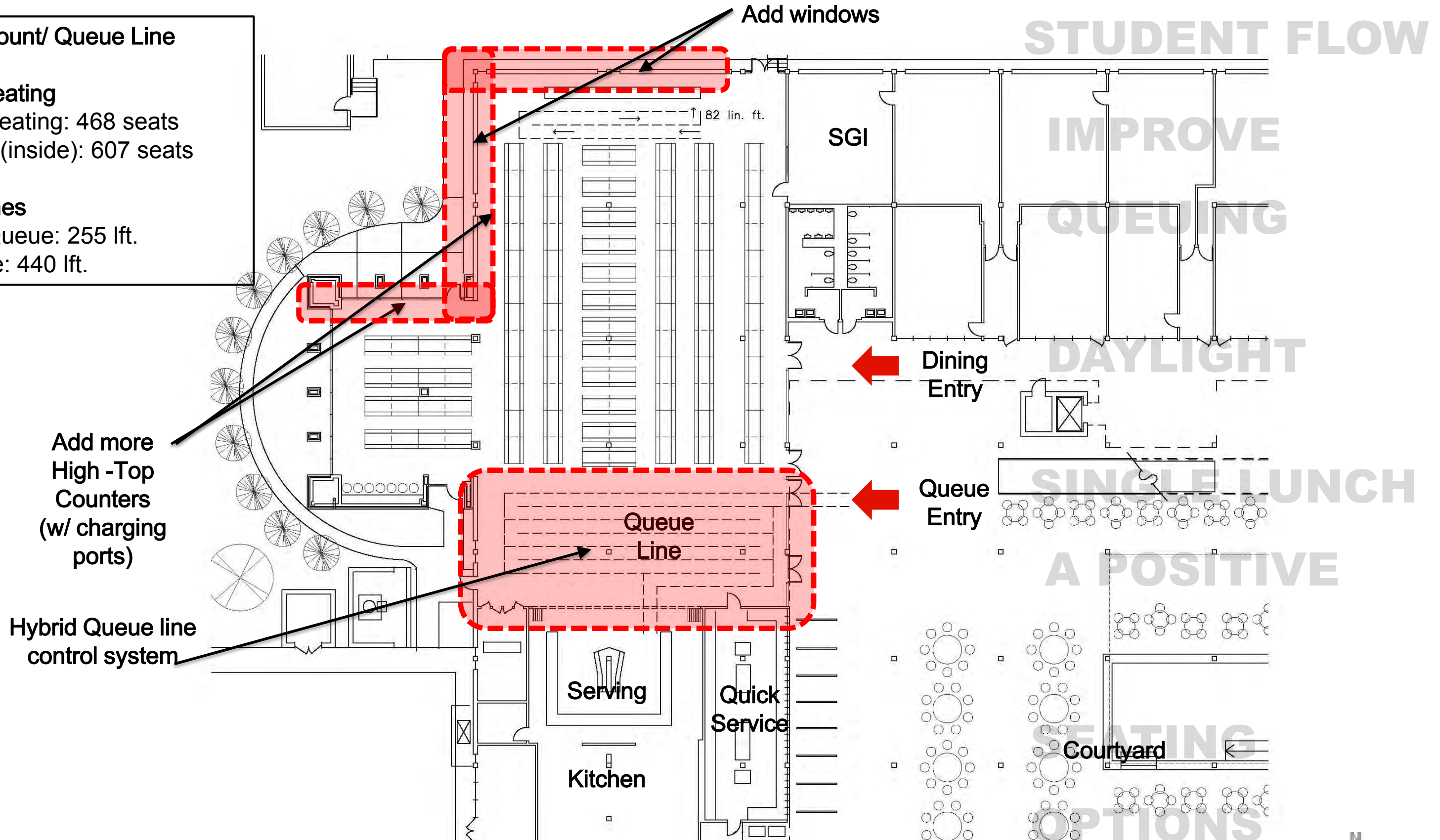
Spring Woods High School Additions and Renovations

Dining Commons Option C (comments review)

Seating Count/ Queue Line

Tables/ Seating
Existing Seating: 468 seats
"C" Seats (inside): 607 seats

Queue Lines
Existing Queue: 255 lft.
"C" Queue: 440 lft.



Spring Woods High School Additions and Renovations

Dining Commons Design Development

Seating Count/ Queue Line

Tables/ Seating

Existing Seating: 468 seats
"C" Seats (inside): 607 seats

Queue Lines

Existing Queue: 255 lft.
"C" Queue: 440 lft.

Proposed
New Windows

Proposed
High -Top
Counter

Queue
Exit

Serving

Kitchen

Quick
Service

Small Group
Instructional

Dining
Entry

Queue
Entry

Courtyard

STUDENT FLOW

IMPROVE

QUEUING

DAYLIGHT

SINGLE LUNCH

A POSITIVE

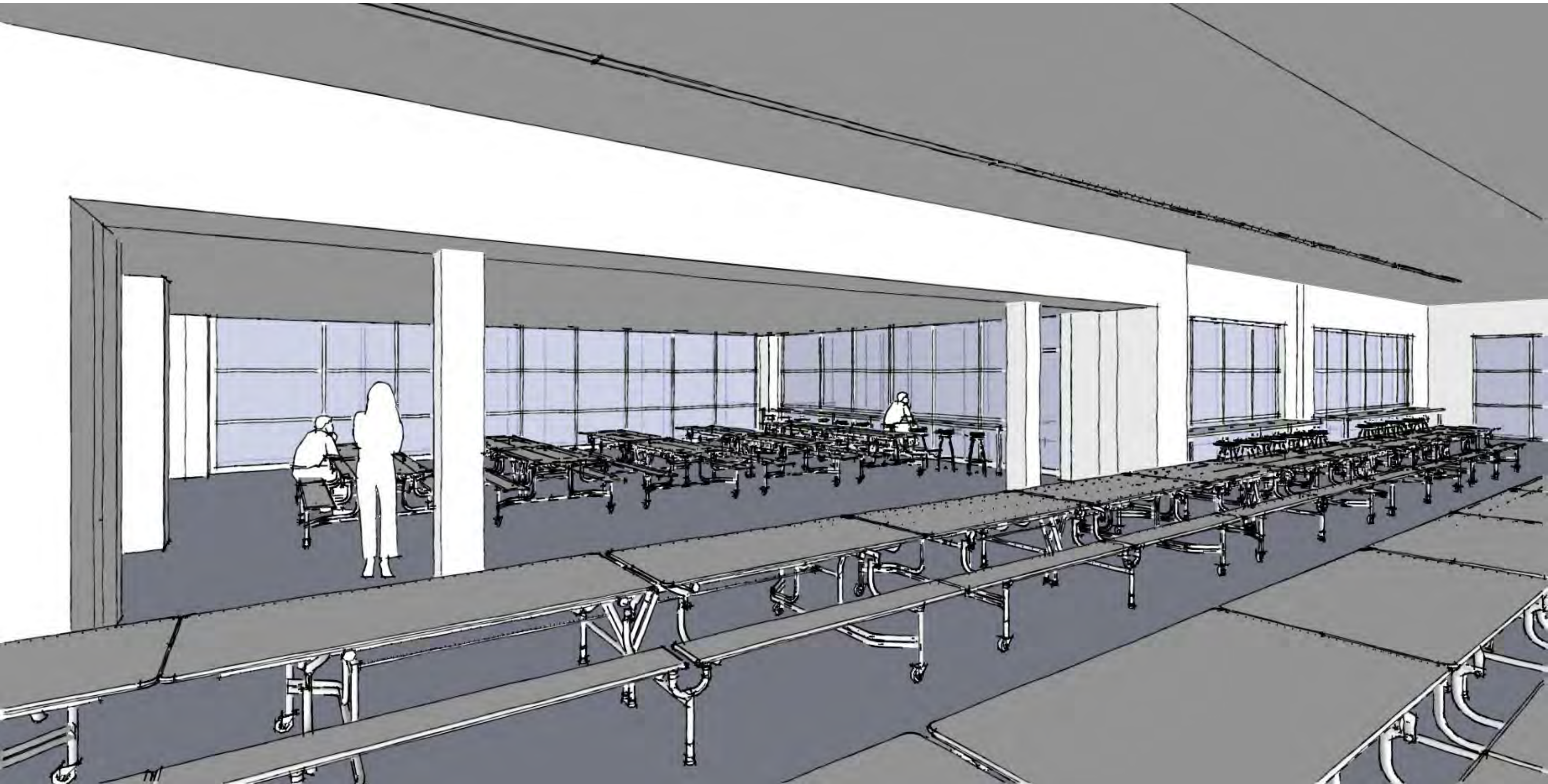
SEATING

OPTIONS









Learning Center Design Development

ACCESSIBILITY

QUEUING

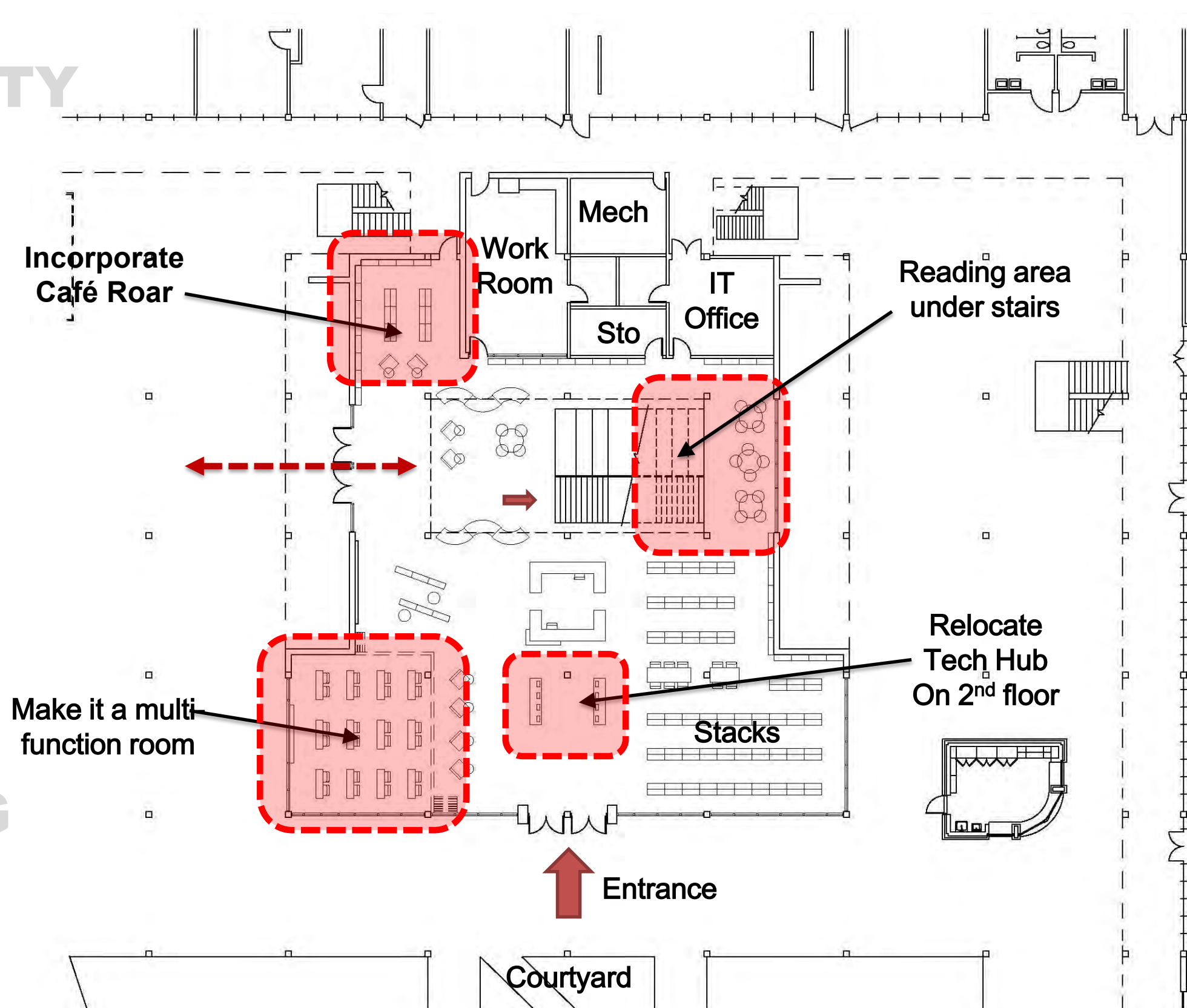
DAYLIGHT

SEATING

OPTIONS

GATHERING

OPTIONS



Book Count	
TEA Acceptable (2,300 Students)	18,500 Books
SWHS Current count	15,900 Books
1 st Level	16,800 Books
2 nd Level	9,100 Units
Total	25,900 Units

ACCESSIBILITY

QUEUING

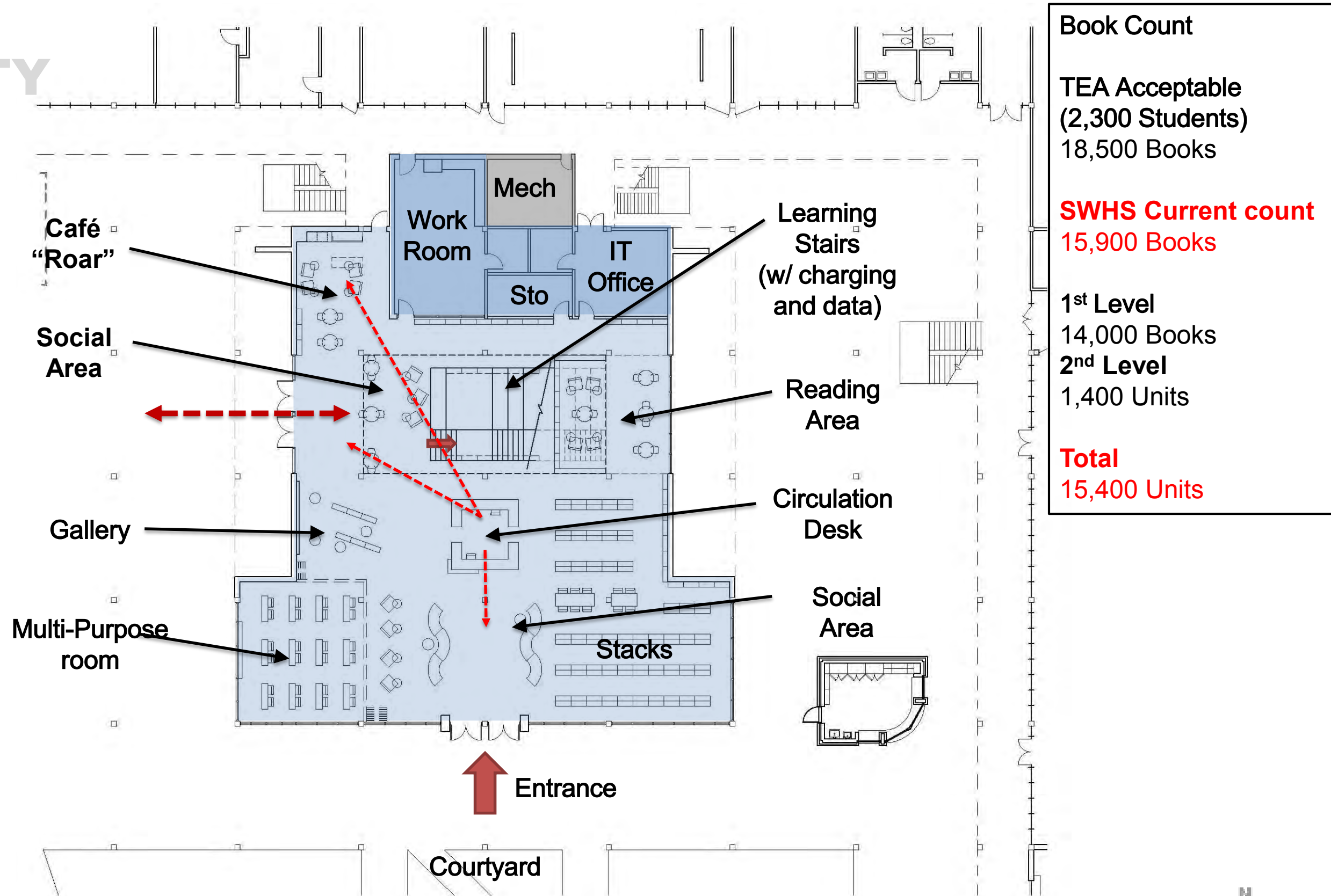
DAYLIGHT

SEATING

OPTIONS

GATHERING

OPTIONS



Book Count

TEA Acceptable
(2,300 Students)
18,500 Books

SWHS Current count
15,900 Books

1st Level
14,000 Books
2nd Level
1,400 Units

Total
15,400 Units

ACCESSIBILITY

QUEUING

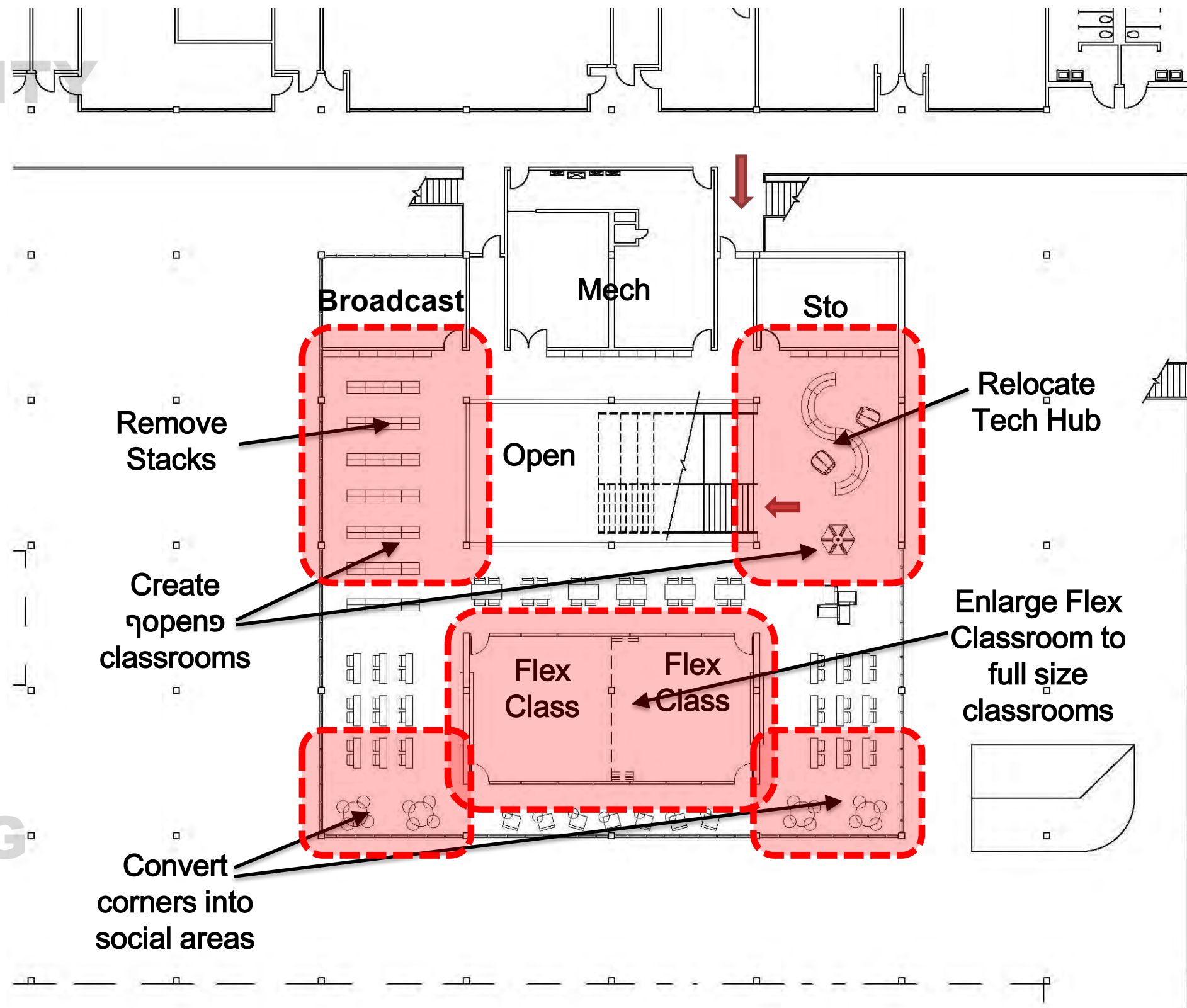
DAYLIGHT

SEATING

OPTIONS

GATHERING

OPTIONS



Book Count

TEA Acceptable
(2,300 Students)
18,500 Books

SWHS Current count
15,900 Books

1st Level
16,800 Books
2nd Level
9,100 Units

Total
25,900 Units

ACCESSIBILITY

QUEUEING

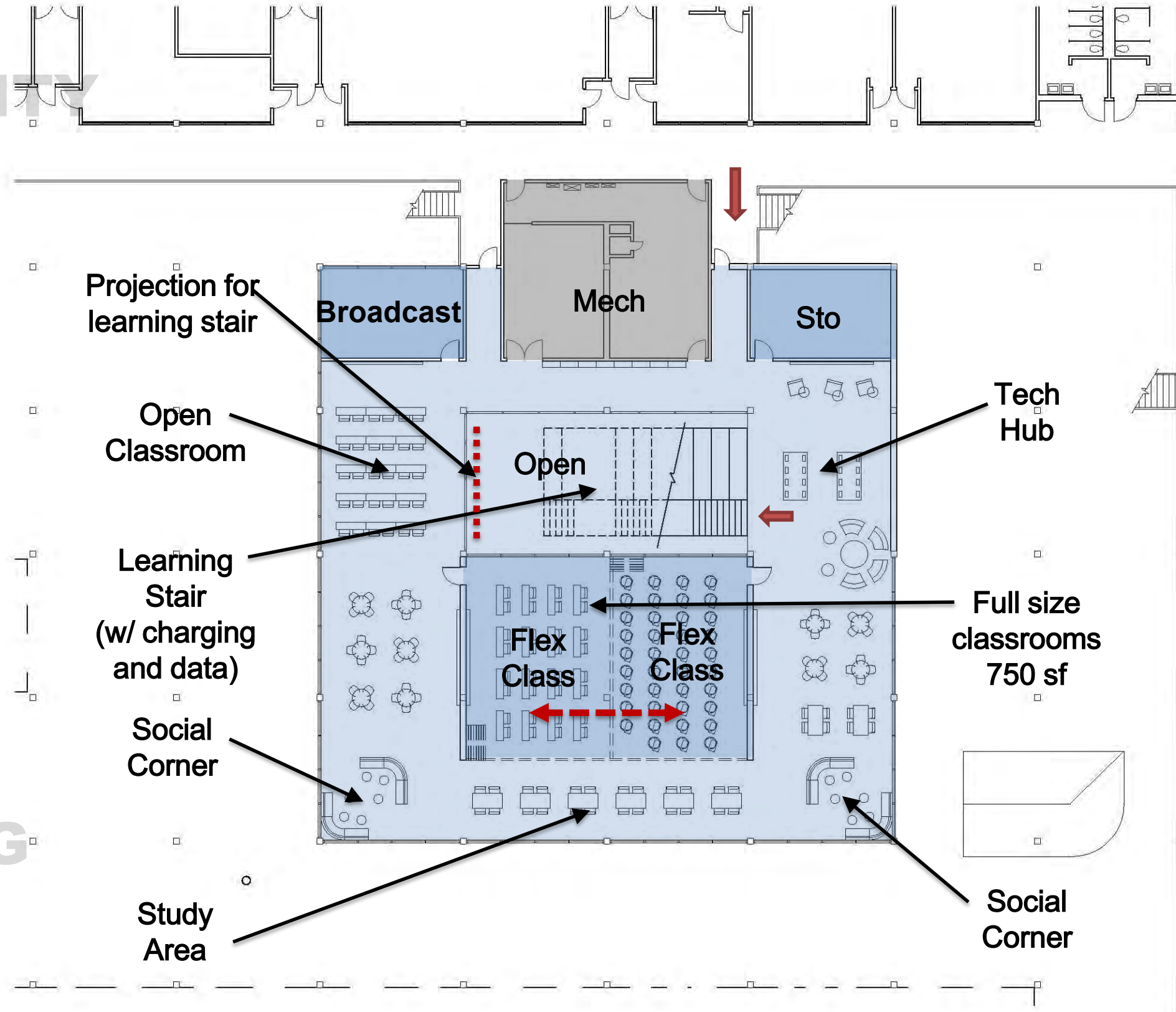
DAYLIGHT

SEATING

OPTIONS

GATHERING

OPTIONS



Book Count

TEA Acceptable
(2,300 Students)
18,500 Books

SWHS Current count
15,900 Books

1st Level
14,000 Books
2nd Level
1,400 Units

Total
15,400 Units

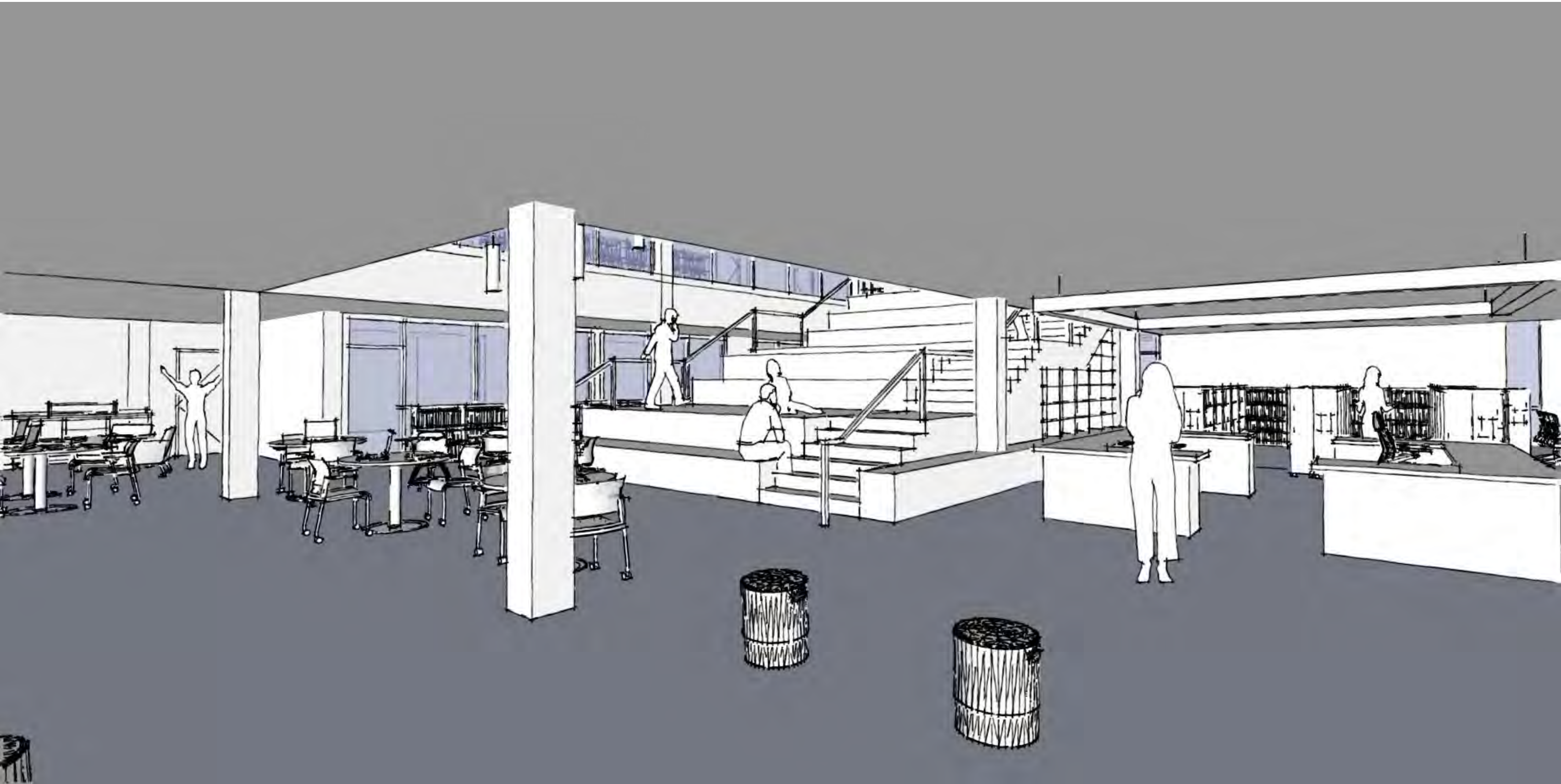














Spring Woods High School Additions and Renovations

Learning Center Interior View (1st Level)



Spring Woods High School Additions and Renovations

Learning Center (2nd Level)



Spring Woods High School Additions and Renovations

Learning Center Interior View (2nd Level)

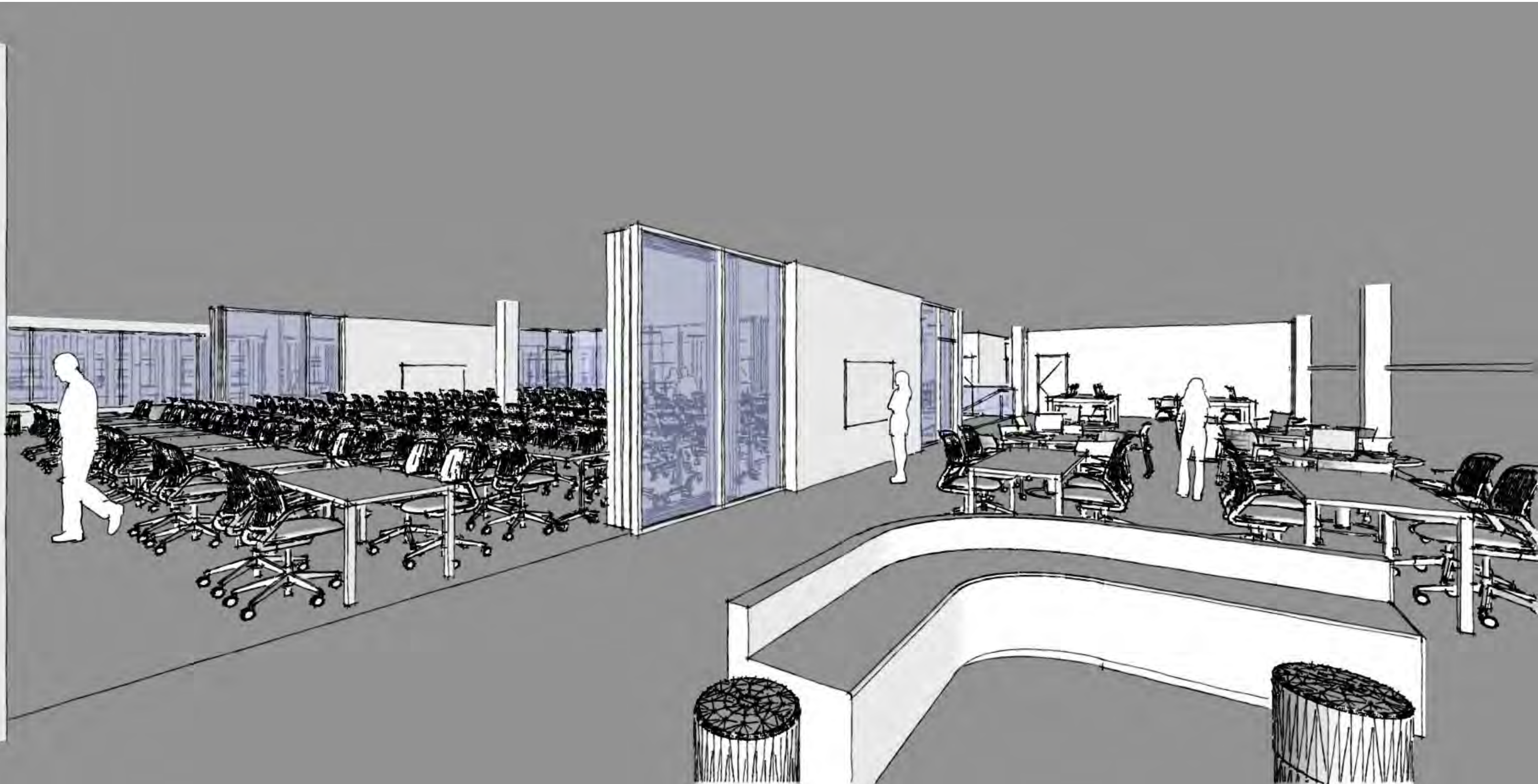


Spring Woods High School Additions and Renovations Learning Center (2nd Level)



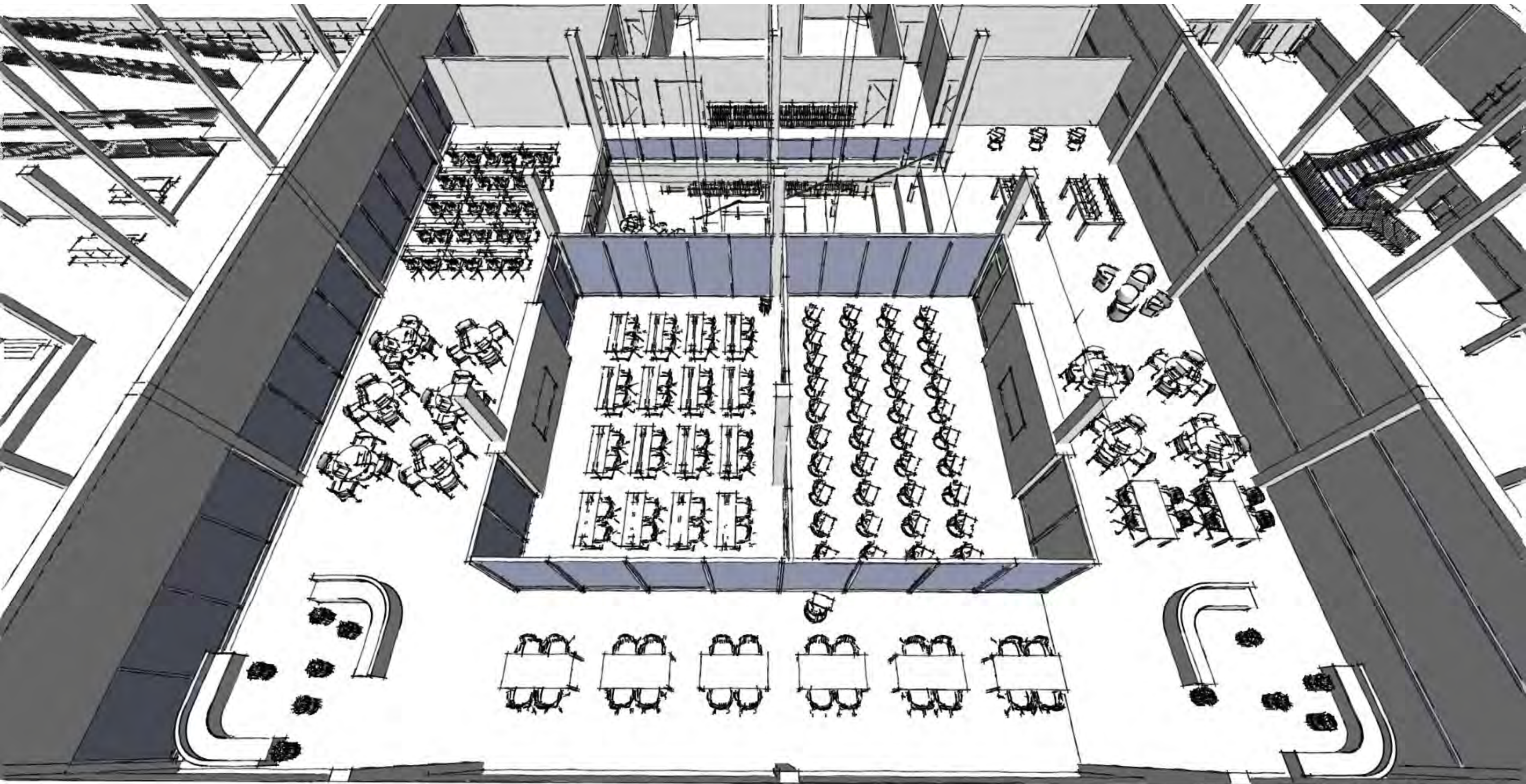
Spring Woods High School Additions and Renovations

Learning Center Interior View (2nd Level)



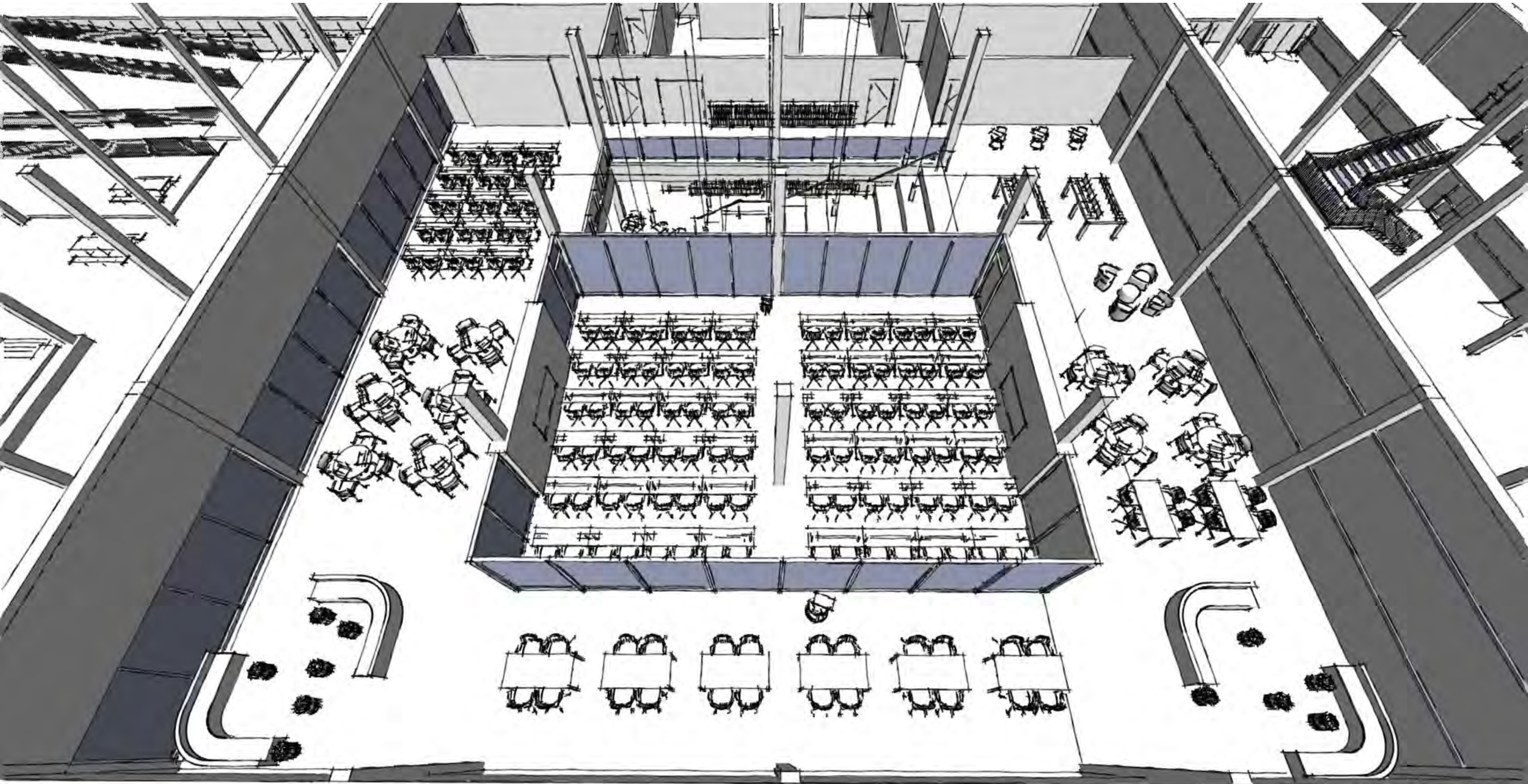
Spring Woods High School Additions and Renovations

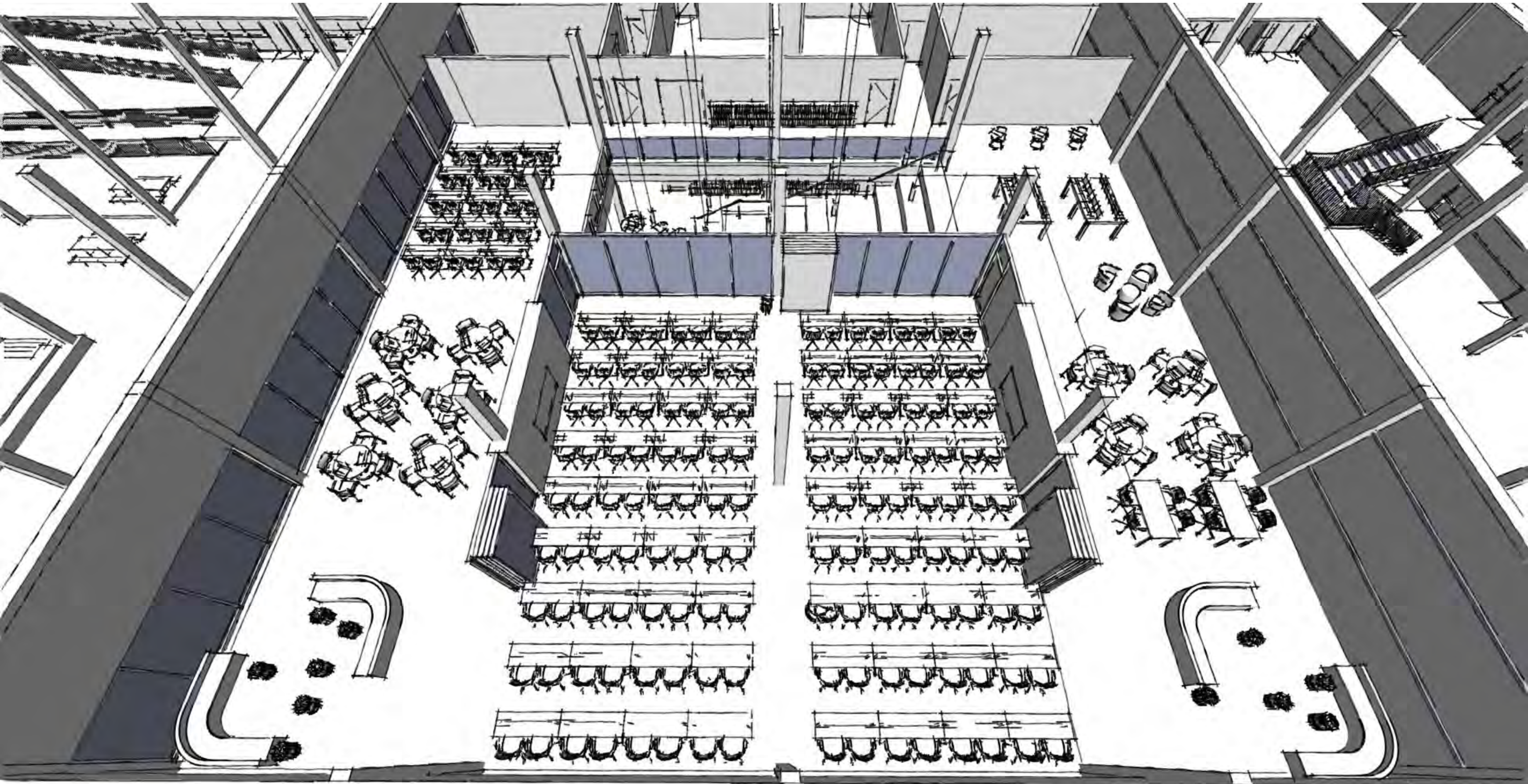
Learning Center Interior View (2nd Level)



Spring Woods High School Additions and Renovations

Learning Center Interior View (2nd Level)

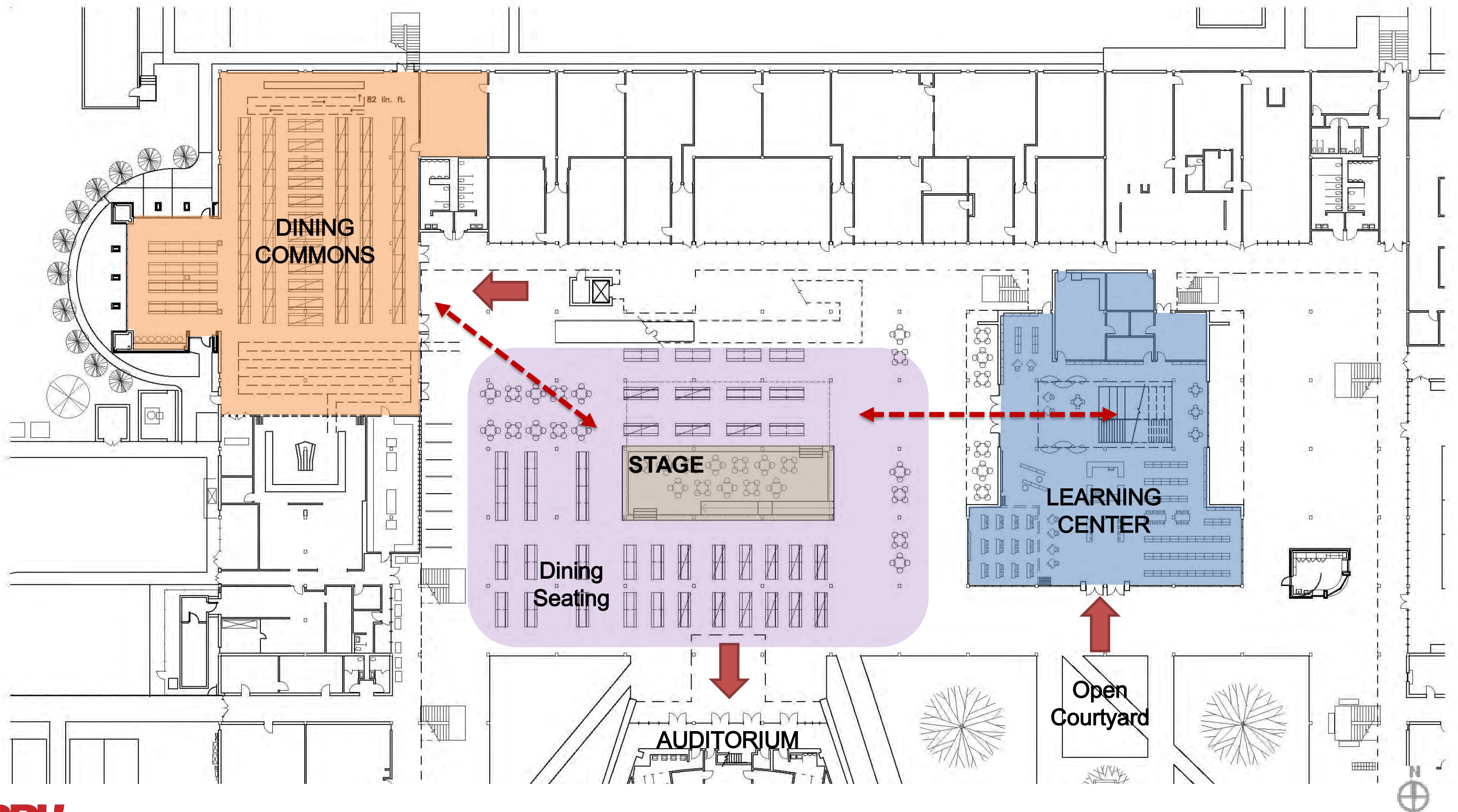




Plaza Layout Design Development

Spring Woods High School Additions and Renovations

Tiger Plaza Design Development











Next Steps

**PAT 01**

08-31-2018

KICK-OFF

- Gather Data
- Start Design

**PAT 02**

09-13-2018

**Schematic
Design**

- Layout Options
- Library Services
- Nutrition Services

**PAT 03**

09-27-2018

**Final
Schematic
Design**

- Refine Layout
- Start Interior Concepts

**PAT 04**

10-04-2018

**Design
Development**

- Review interiors and plans
- Library Services
- Nutrition Services

PAT 05

10-25-2018

**Final
Design
Develp.**

- Finalize Overall Design
- Review Interior Finishes and colors

PAT 06

12-18-2018

**Final
Design
Review**

- Review Overall Design
- Review Budget
- Review Finishes



Thank you!

