



Spring Woods High School Additions and Renovations

PAT Meeting No. 05

Spring Branch Independent School District \\ Houston, Texas \\ October 25th, 2018



PAT Meeting #05 (12:00pm to 1:30pm)

- Project Recap
- Dining Commons design development
- Learning Center design development
- Commons Plaza design development
- Next Steps
- Meeting Adjourned at 1:30pm

Project Recap



PAT 01

08-31-2018

KICK-OFF

- Gather Data
- Start Design



PAT 02

09-13-2018

Schematic Design

- Layout Options
- Library Services
- Nutrition Services



PAT 03

09-27-2018

Final Schematic Design

- Refine Layout
- Start Interior Concepts



PAT 04

10-04-2018

Design Development

- Review Interior and plans
- Library Services
- Nutrition Services

PAT 05

10-25-2018

Final Design Develop.

- Finalize Overall Design
- Review Interior Finishes and colors

PAT 06

12-18-2018

Final Design Review

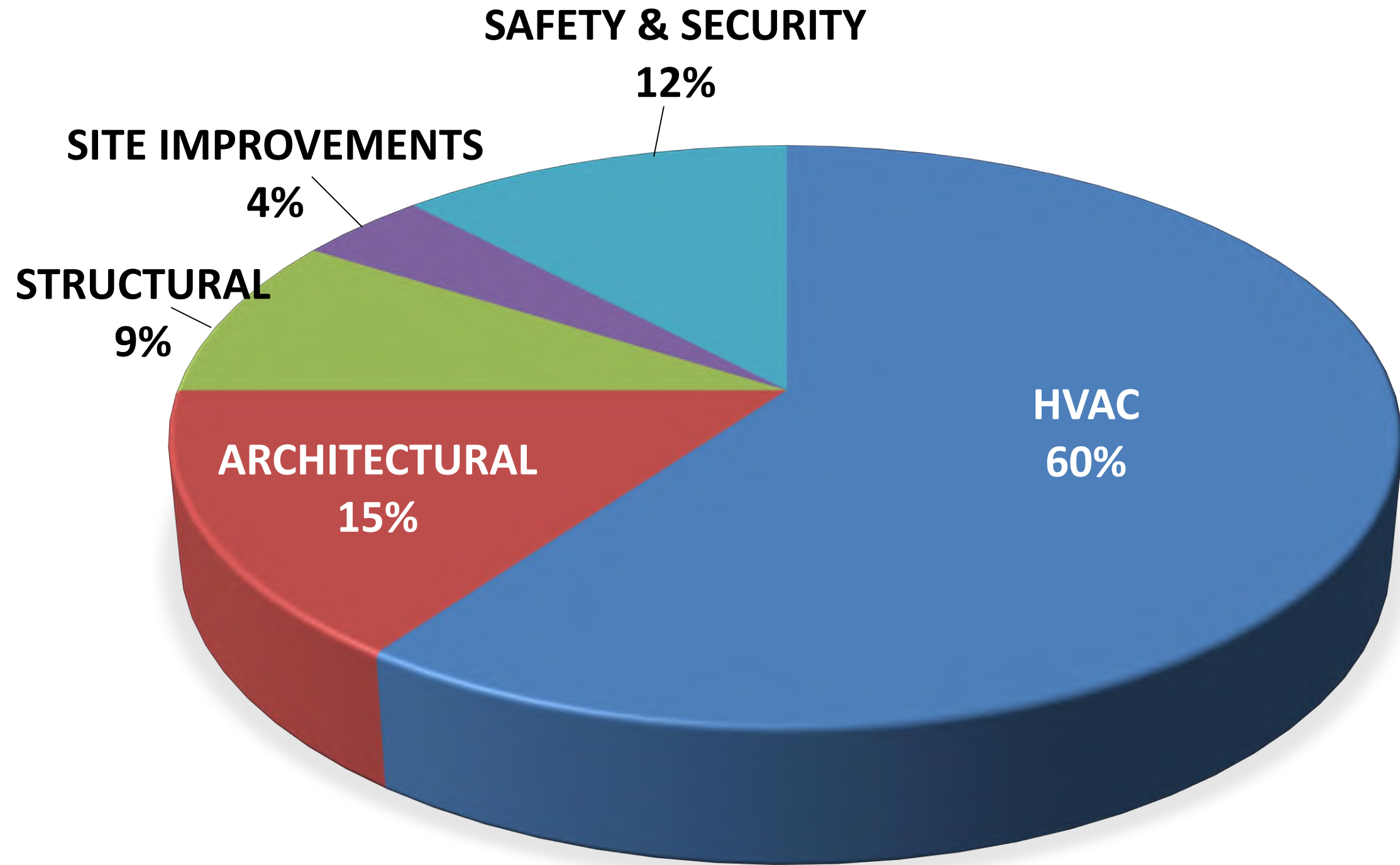
- Review Overall Design
- Review Budget
- Review Finishes

Goal

The goal of the PAT is to ensure that parents, staff and community members have the opportunity to take part in the planning and design of new schools. The PAT members will **serve as communicators** to and from the community during the schematic design and development phases of the project and participate in discussions that will lead to recommendations. The PAT concludes its work once construction begins.

Charge

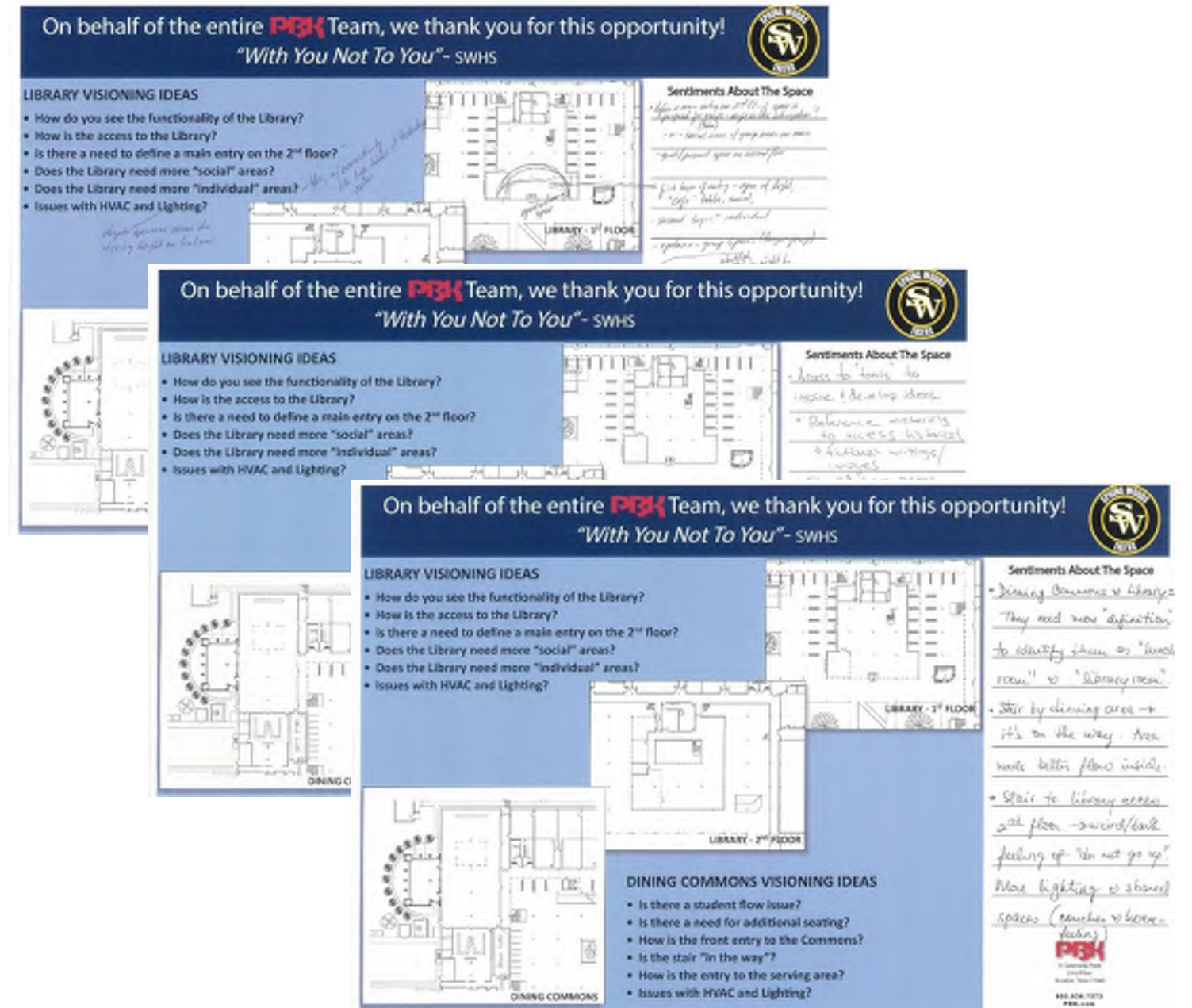
Each Project Advisory Team's (PAT) members are charged with **providing input into planning and design development** for their school's new construction or major renovation project in the 2017 Bond Program. The PAT will meet as needed throughout the project, from initial planning, through design to the start of construction. Meeting agendas and minutes will be posted on the school's bond project website.



- ATHLETICS
- FURNITURE



- ENTRY – EXIT ISSUES
- PRIORITY 1: **STUDENT FLOW**
- PRIORITY 2: STUDENT SEATING
- **IMPROVE STUDENT QUEUING**
- RELOCATE ENTRY POINTS
- USE EXISTING TEACHER LOUNGE
- REMOVE EXTERIOR STAIRWAY
- **SINGLE LUNCH A POSITIVE**
- INCREASE LUNCH PERIODS
- MAXIMIZE DAYLIGHT



On behalf of the entire **PBK** Team, we thank you for this opportunity!
"With You Not To You"- SWHS

LIBRARY VISIONING IDEAS

- How do you see the functionality of the Library?
- How is the access to the Library?
- Is there a need to define a main entry on the 2nd floor?
- Does the Library need more "social" areas?
- Does the Library need more "individual" areas?
- Issues with HVAC and Lighting?

Sentiments About The Space

Library - 1st FLOOR

Library - 2nd FLOOR

DINING COMMONS VISIONING IDEAS

- Is there a student flow issue?
- Is there a need for additional seating?
- How is the front entry to the Commons?
- Is the stair "in the way"?
- How is the entry to the serving area?
- Issues with HVAC and Lighting?

Sentiments About The Space


DINING COMMONS

Handwritten feedback includes:

- "How do you see the functionality of the Library?" - "It's a good question, but I think it's more about the layout and flow."
- "How is the access to the Library?" - "It's a bit confusing, but I think it's better than the old one."
- "Is there a need to define a main entry on the 2nd floor?" - "Yes, it's a good idea to have a clear entry point."
- "Does the Library need more 'social' areas?" - "Yes, it's a good idea to have a place where students can hang out."
- "Does the Library need more 'individual' areas?" - "Yes, it's a good idea to have a place where students can study."
- "Issues with HVAC and Lighting?" - "The lighting is a bit dim, but the HVAC is good."
- "Sentiments About The Space" - "The space is a bit cluttered, but I like the layout. I think it's a good idea to have a clear entry point. I also like the idea of having a place where students can hang out. The lighting is a bit dim, but the HVAC is good."
- "DINING COMMONS VISIONING IDEAS" - "Is there a student flow issue?" - "Yes, it's a good idea to have a clear entry point. I also like the idea of having a place where students can hang out. The lighting is a bit dim, but the HVAC is good."
- "Is there a need for additional seating?" - "Yes, it's a good idea to have a place where students can hang out. The lighting is a bit dim, but the HVAC is good."
- "How is the front entry to the Commons?" - "It's a bit confusing, but I think it's better than the old one."
- "Is the stair 'in the way'?" - "Yes, it's a good idea to have a clear entry point. I also like the idea of having a place where students can hang out. The lighting is a bit dim, but the HVAC is good."
- "How is the entry to the serving area?" - "It's a bit confusing, but I think it's better than the old one."
- "Issues with HVAC and Lighting?" - "The lighting is a bit dim, but the HVAC is good."


On behalf of the entire **PBX** Team, we thank you for this opportunity!

"With You Not To You" - SWHS



LIBRARY VISIONING IDEAS

- How do you see the functionality of the Library?
- How is the access to the Library?
- Is there a need to define a main entry on the 2nd floor?
- Does the Library need more "social" areas?
- Does the Library need more "individual" areas?
- Issues with HVAC and Lighting?

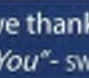


Sentiments About The Space

- Library will be a...
- Updated furniture
- More social areas
- More individual areas
- Updated lighting
- Updated HVAC

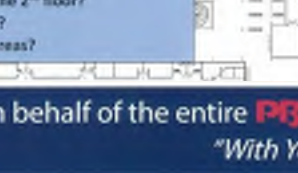
On behalf of the entire **PBX** Team, we thank you for this opportunity!

"With You Not To You" - SWHS



LIBRARY VISIONING IDEAS

- How do you see the functionality of the Library?
- How is the access to the Library?
- Is there a need to define a main entry on the 2nd floor?
- Does the Library need more "social" areas?
- Does the Library need more "individual" areas?
- Issues with HVAC and Lighting?




Sentiments About The Space

- Library will be a...
- Updated furniture
- More social areas
- More individual areas
- Updated lighting
- Updated HVAC

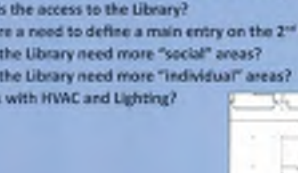
On behalf of the entire **PBX** Team, we thank you for this opportunity!

"With You Not To You" - SWHS



LIBRARY VISIONING IDEAS

- How do you see the functionality of the Library?
- How is the access to the Library?
- Is there a need to define a main entry on the 2nd floor?
- Does the Library need more "social" areas?
- Does the Library need more "individual" areas?
- Issues with HVAC and Lighting?




Sentiments About The Space

- Library will be a...
- Updated furniture
- More social areas
- More individual areas
- Updated lighting
- Updated HVAC

DINING COMMONS VISIONING IDEAS

- Is there a student flow issue?
- Is there a need for additional seating?
- How is the front entry to the Commons?
- Is the stair "in the way"?
- How is the entry to the serving area?
- Issues with HVAC and Lighting?




Sentiments About The Space

- Library will be a...
- Updated furniture
- More social areas
- More individual areas
- Updated lighting
- Updated HVAC


On behalf of the entire **PBX** Team, we thank you for this opportunity!

"With You Not To You" - SWHS



LIBRARY VISIONING IDEAS

- How do you see the functionality of the Library?
- How is the access to the Library?
- Is there a need to define a main entry on the 2nd floor?
- Does the Library need more "social" areas?
- Does the Library need more "individual" areas?
- Issues with HVAC and Lighting?

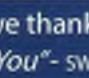


Sentiments About The Space

- Library will be a...
- Updated furniture
- More social areas
- More individual areas
- Updated lighting
- Updated HVAC

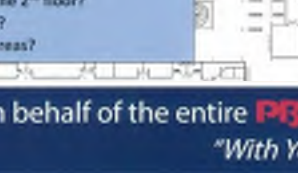
On behalf of the entire **PBX** Team, we thank you for this opportunity!

"With You Not To You" - SWHS



LIBRARY VISIONING IDEAS

- How do you see the functionality of the Library?
- How is the access to the Library?
- Is there a need to define a main entry on the 2nd floor?
- Does the Library need more "social" areas?
- Does the Library need more "individual" areas?
- Issues with HVAC and Lighting?




Sentiments About The Space

- Library will be a...
- Updated furniture
- More social areas
- More individual areas
- Updated lighting
- Updated HVAC

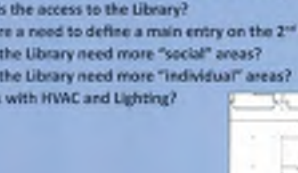
On behalf of the entire **PBX** Team, we thank you for this opportunity!

"With You Not To You" - SWHS



LIBRARY VISIONING IDEAS

- How do you see the functionality of the Library?
- How is the access to the Library?
- Is there a need to define a main entry on the 2nd floor?
- Does the Library need more "social" areas?
- Does the Library need more "individual" areas?
- Issues with HVAC and Lighting?




Sentiments About The Space

- Library will be a...
- Updated furniture
- More social areas
- More individual areas
- Updated lighting
- Updated HVAC

DINING COMMONS VISIONING IDEAS

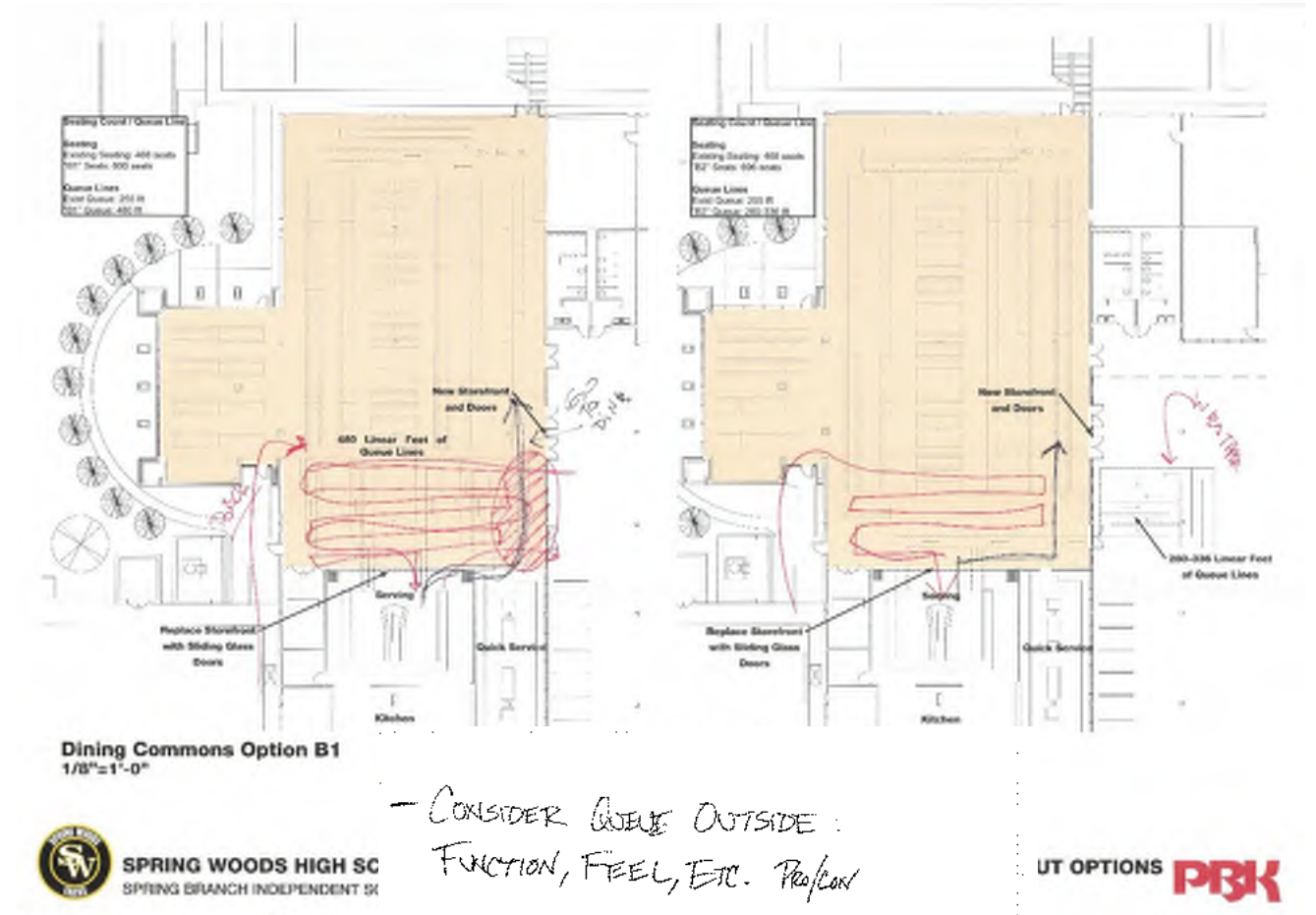
- Is there a student flow issue?
- Is there a need for additional seating?
- How is the front entry to the Commons?
- Is the stair "in the way"?
- How is the entry to the serving area?
- Issues with HVAC and Lighting?



Sentiments About The Space

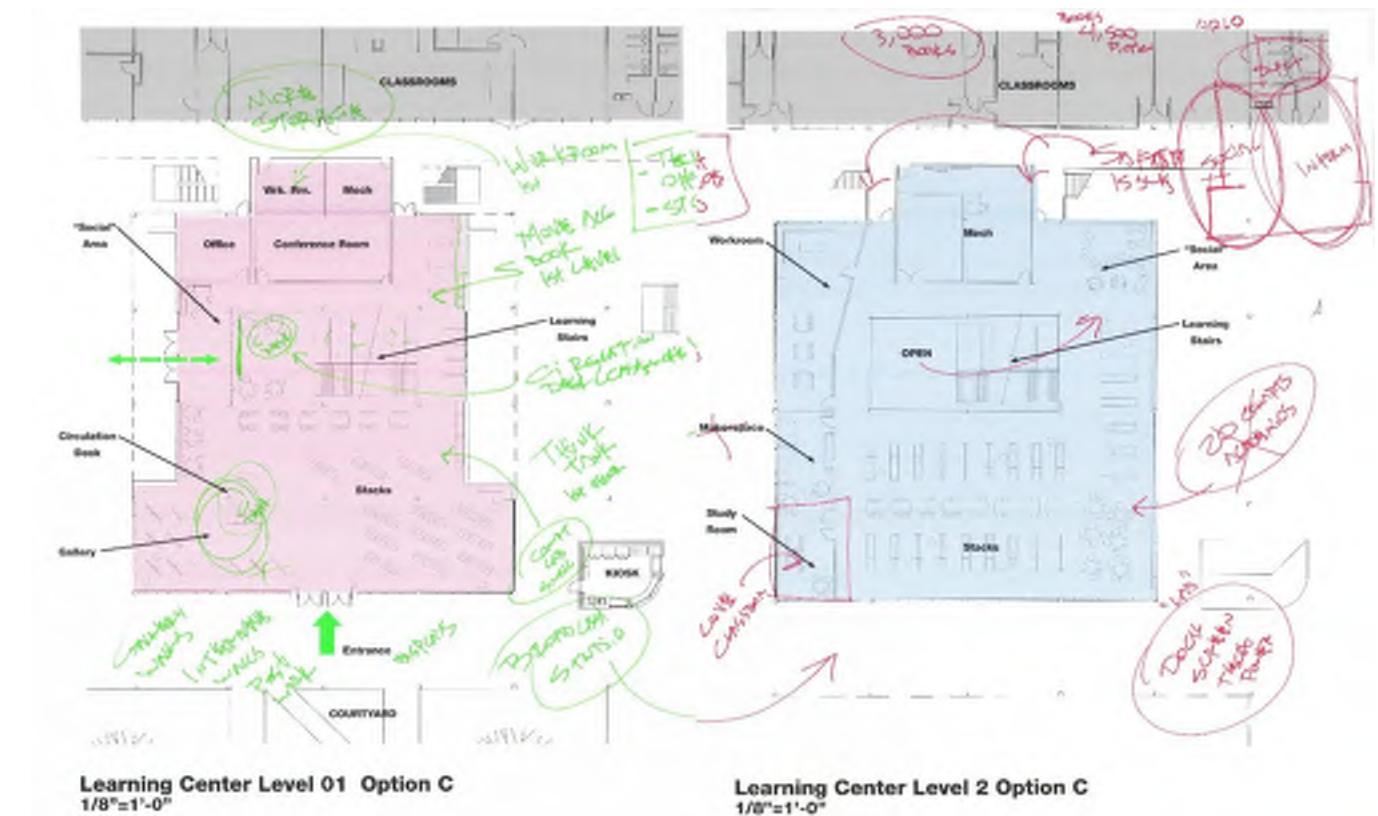
- Library will be a...
- Updated furniture
- More social areas
- More individual areas
- Updated lighting
- Updated HVAC

- Need **queue line control** system
- Have **one queue line** instead of two
- Capture **maximum expansion** as possible
- **Expand Commons** into hallway and under balcony
- **Repurpose classroom** for Commons
- Add more **daylight**
- Variety of seating (as possible)
- Keep looking into reshaping serving lines



- CONSIDER QUEUE OUTSIDE :
FUNCTION, FEEL, ETC. PRO/CON
- NEED PERMANENT QUEUE LINES
(ARROWS OR FLOOR PAINT MARK)
- FORCE PEDESTRIAN TRAFFIC AROUND CAFE
ENERGIZE "BACK"
- SPLIT LINES FOR SPEED
- ENSURE SPACE AT DOORS IS AVAIL/OVEN
EXTEND LINES FARTHER WITHIN SPACE
- BACK ENTRY HELPS DISCHARGE TO COURTYARD
- CAPTURING MAX EXPANSION BOTH SIDES DESIRED

- Move all **books to 1st Level**
- Have circulation desk **close to entrances**
- No Makerspace
- “**Computer room**” 1st Level
- **Flexible Classrooms** 2nd Level
- Lack of supervision at 2nd Level
- Need **Tech office** 1st Level
- **Workroom** 1st Level
- **Broadcast room** 2nd Level
- Liked “**Learning Stair**”



SPRING WOODS H
SPRING BRANCH INDEPE

- 2ND FLOOR DOORS LOCK TO LIMIT SECURITY & MONITORING OF SPACES BY 1 LIBRARIAN / *SUPPORT SPACES
- 2ND FLOOR "ACADEMIC" / 1ST FLOOR SOCIAL
- w/ 1:1 CHROMEBOOKS DECREASED COMP. WORKSTATIONS 20 USED FOR ACADEMIC
- EXISTING CLASSROOM ON LEVEL 2 BECOMES 2 FLEX-CLASSROOMS
→ PARTITION WALL (OPERABLE)
- DESIGN TO PERSONALIZED LEARNING.

ARGED FLOOR PLAN **PRK**

Dining Commons Design Development

Spring Woods High School Additions and Renovations

Dining Commons Design Development

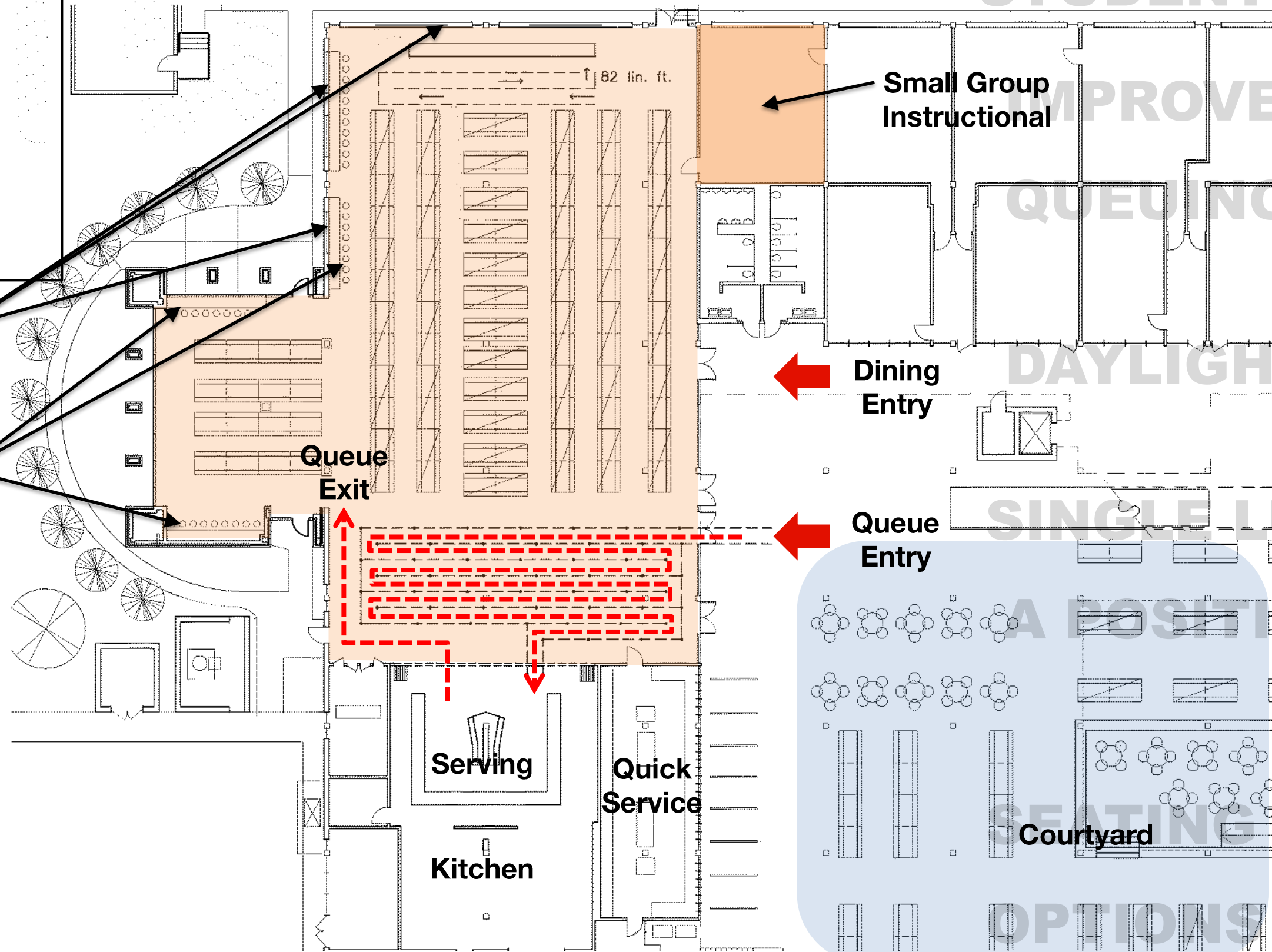
Seating Count/ Queue Line

Tables/ Seating
Existing Seating: 468 seats
"C" Seats (inside): 607 seats

Queue Lines
Existing Queue: 255 lft.
"C" Queue: 440 lft.

Proposed New Windows

Proposed High -Top Counter



















Learning Center Design Development

ACCESSIBILITY

QUEUING

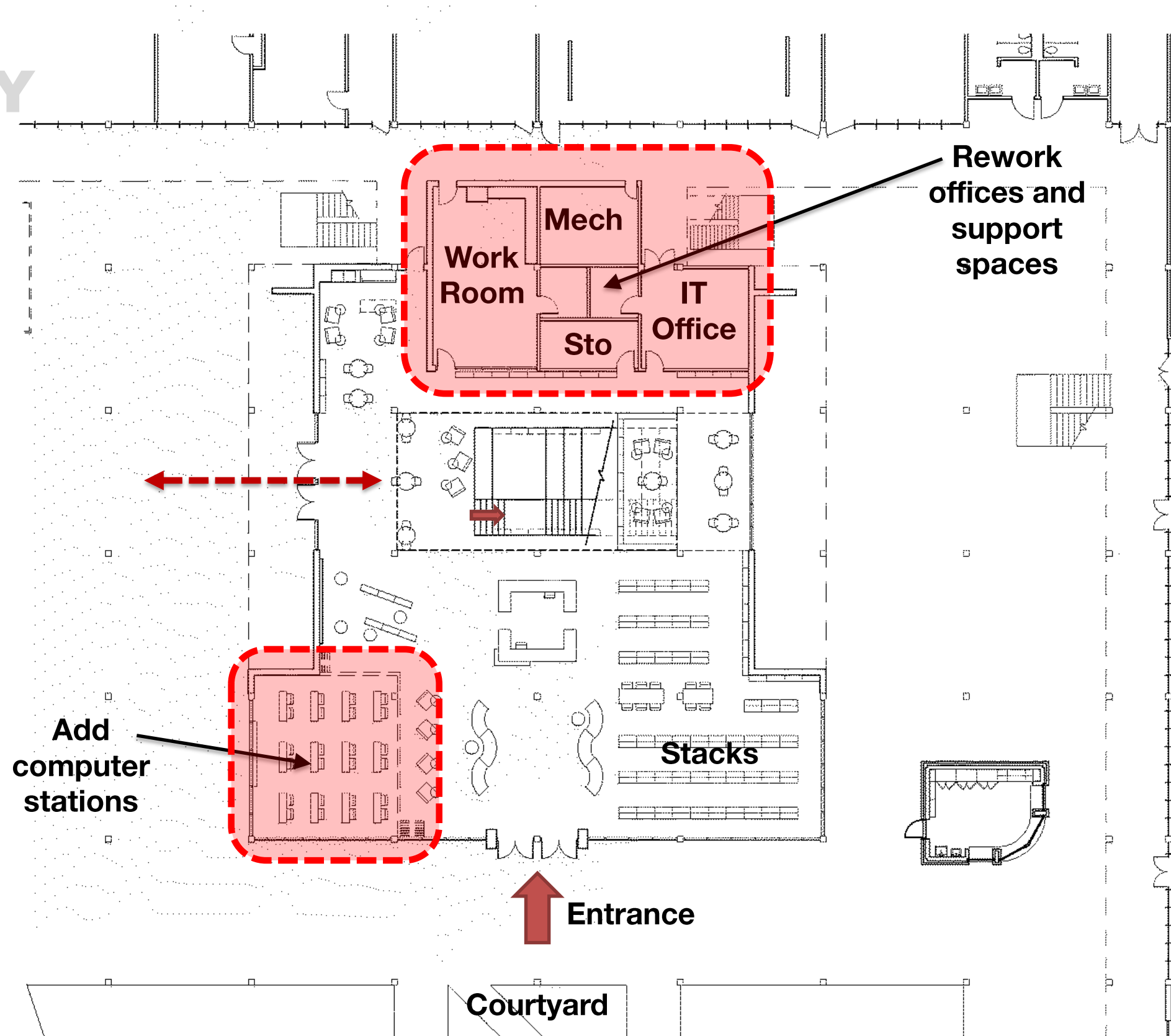
DAYLIGHT

SEATING

OPTIONS

GATHERING

OPTIONS



Book Count	
TEA Acceptable (2,300 Students)	18,500 Books
SWHS Current count	15,900 Books
1st Level	14,000 Books
2nd Level	1,400 Units
Total	15,400 Units

ACCESSIBILITY

QUEUING

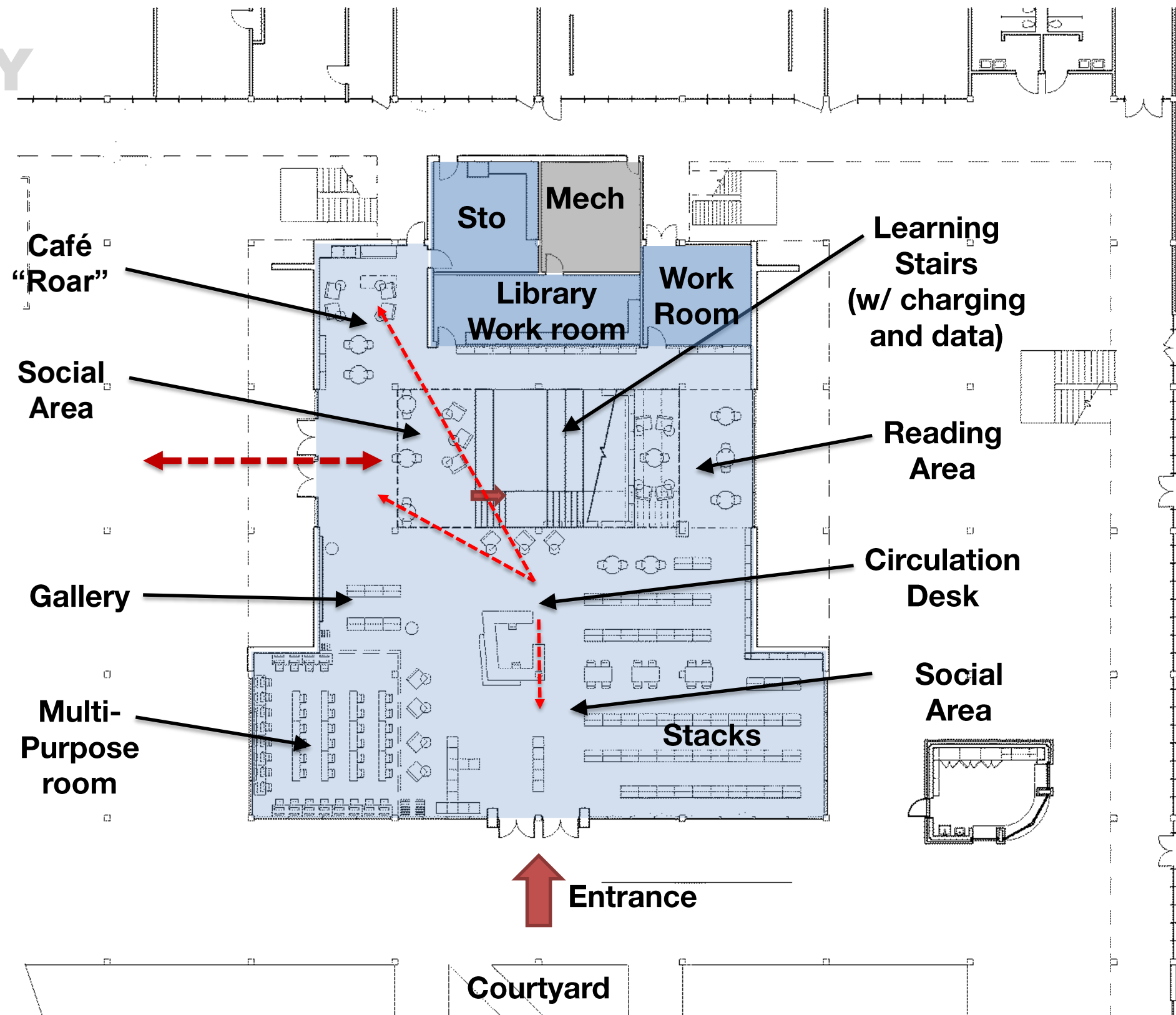
DAYLIGHT

SEATING

OPTIONS

GATHERING

OPTIONS



Book Count	
TEA Acceptable (2,300 Students)	18,500 Books
SWHS Current count	15,900 Books
1 st Level	14,000 Books
2 nd Level	1,400 Units
Total	15,400 Units

Spring Woods High School Additions and Renovations

Learning Center 2nd Level Design Development

ACCESSIBILITY

QUEUING

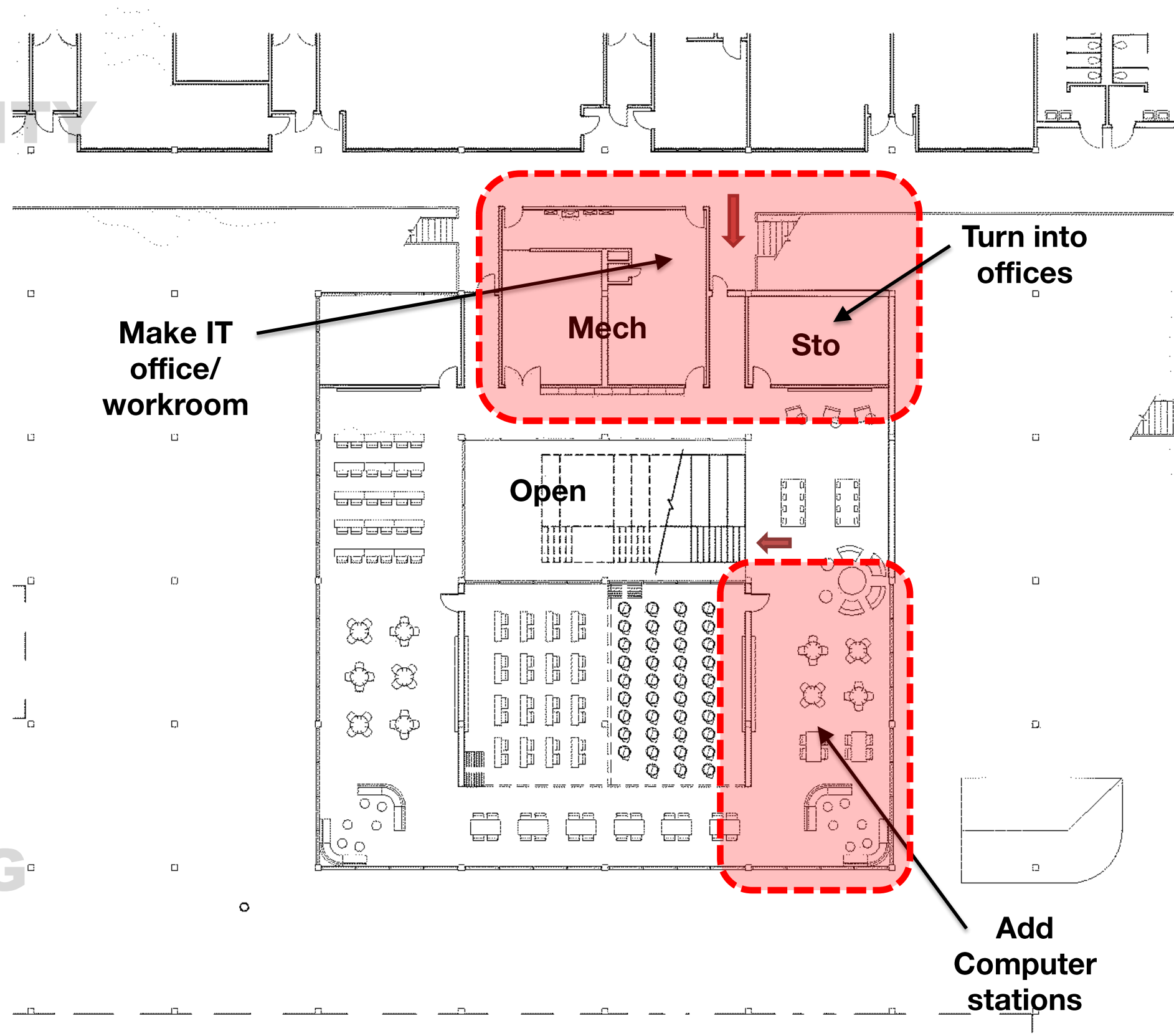
DAYLIGHT

SEATING

OPTIONS

GATHERING

OPTIONS



Book Count

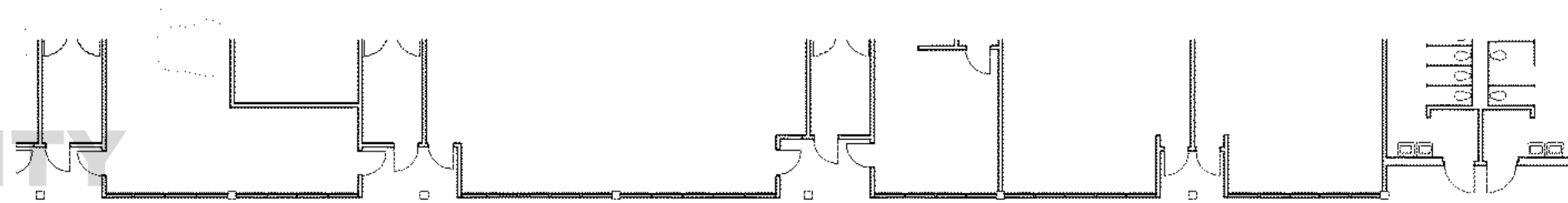
TEA Acceptable
(2,300 Students)
18,500 Books

SWHS Current count
15,900 Books

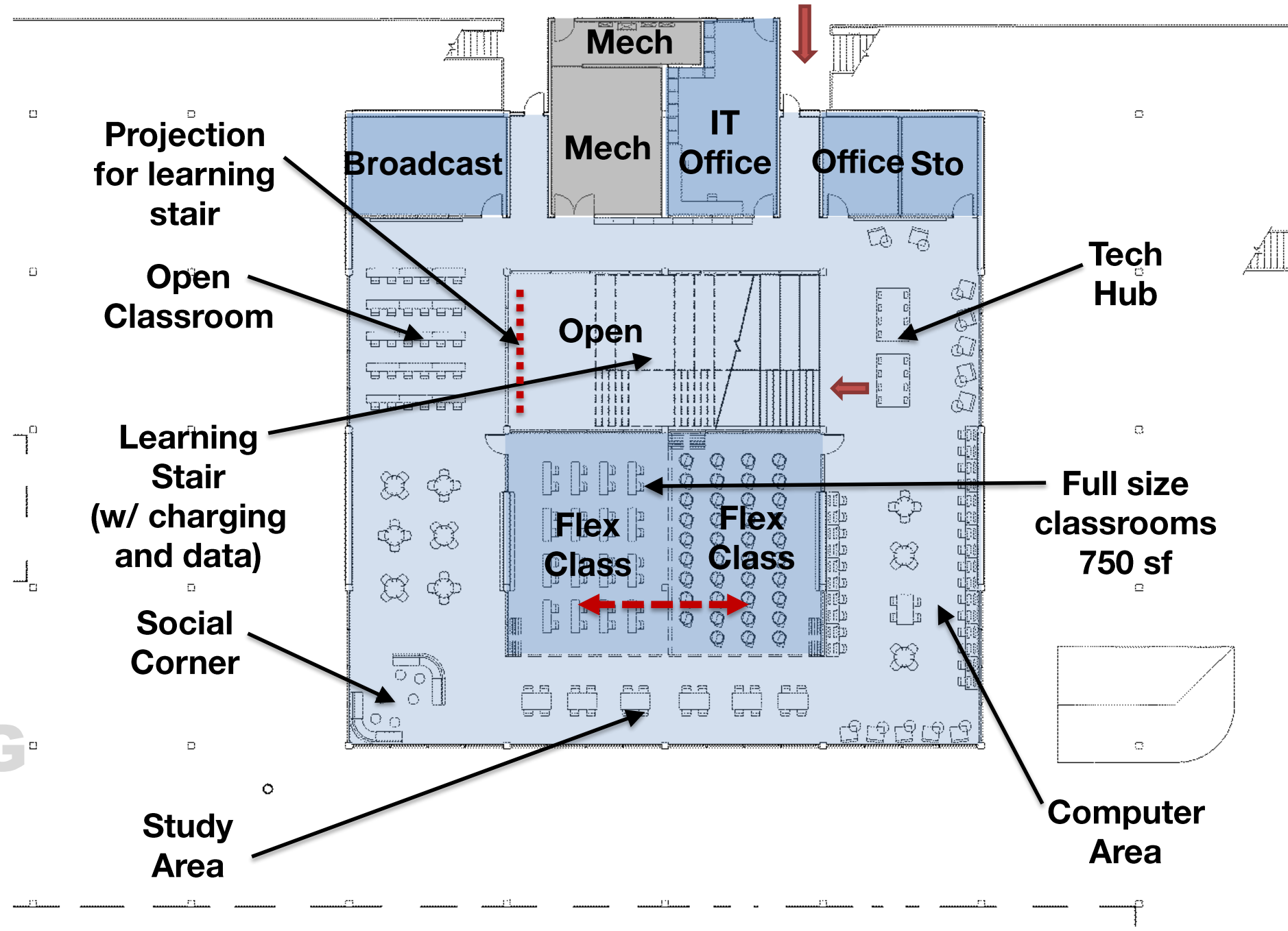
1st Level
14,000 Books
2nd Level
1,400 Units

Total
15,400 Units

ACCESSIBILITY



QUEUEING



DAYLIGHT

SEATING

OPTIONS

GATHERING

OPTIONS

Book Count

TEA Acceptable
(2,300 Students)
18,500 Books

SWHS Current count
15,900 Books

1st Level
14,000 Books
2nd Level
1,400 Units

Total
15,400 Units













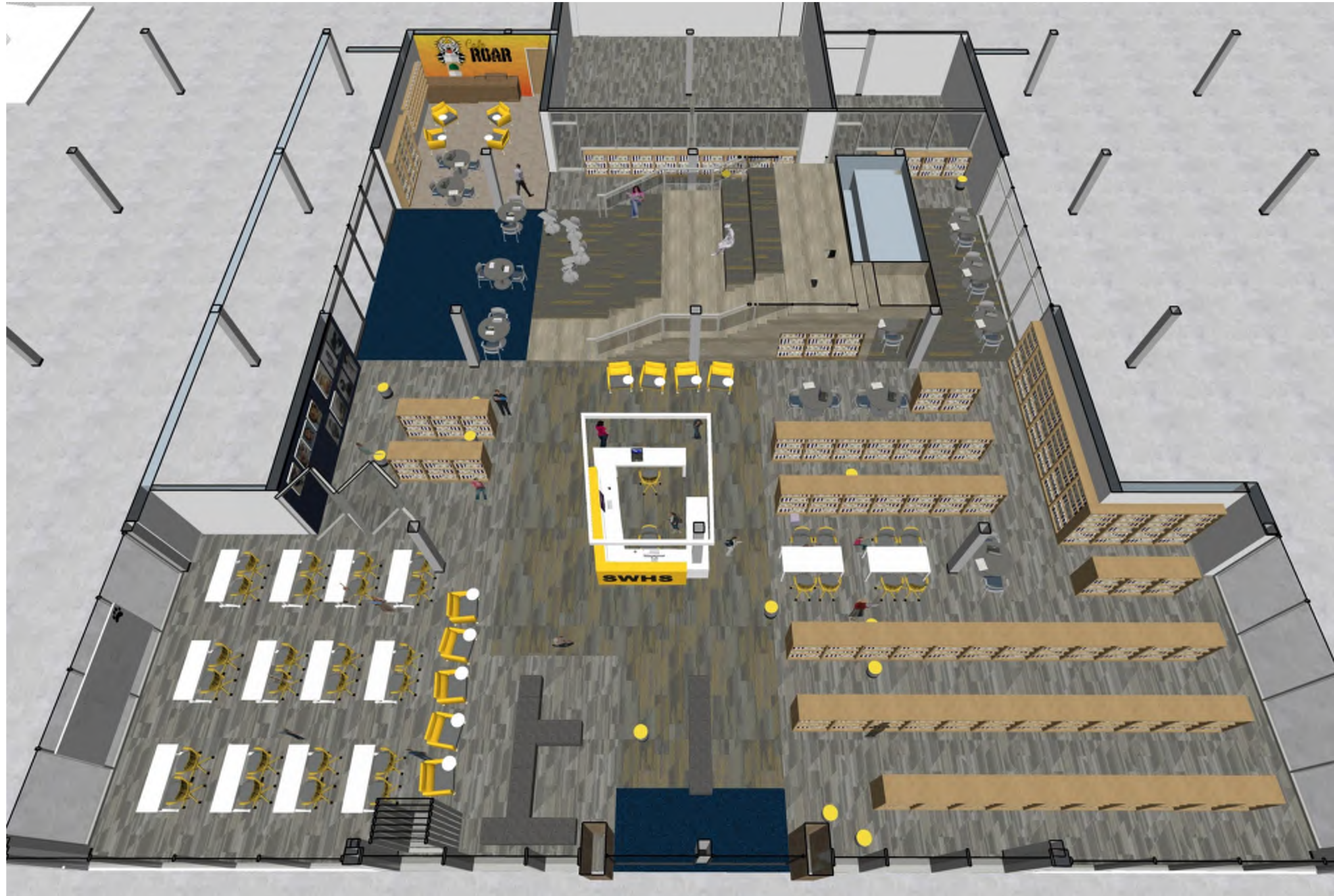






Spring Woods High School Additions and Renovations

Learning Center Interior View (1st Level)



Spring Woods High School Additions and Renovations Learning Center (2nd Level)







Spring Woods High School Additions and Renovations

Learning Center Interior View (2nd Level)

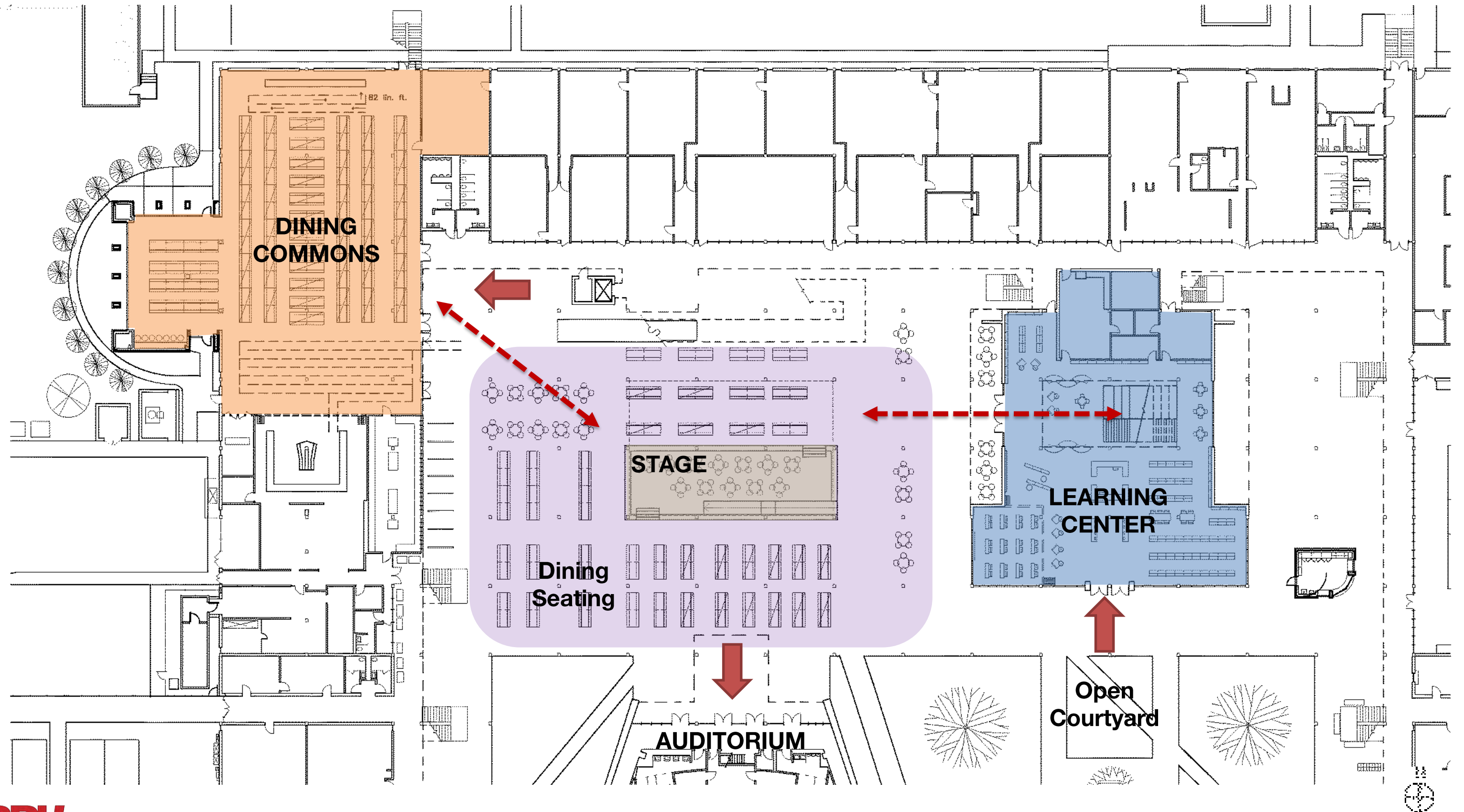




Plaza Layout Design Development

Spring Woods High School Additions and Renovations

Tiger Plaza Design Development







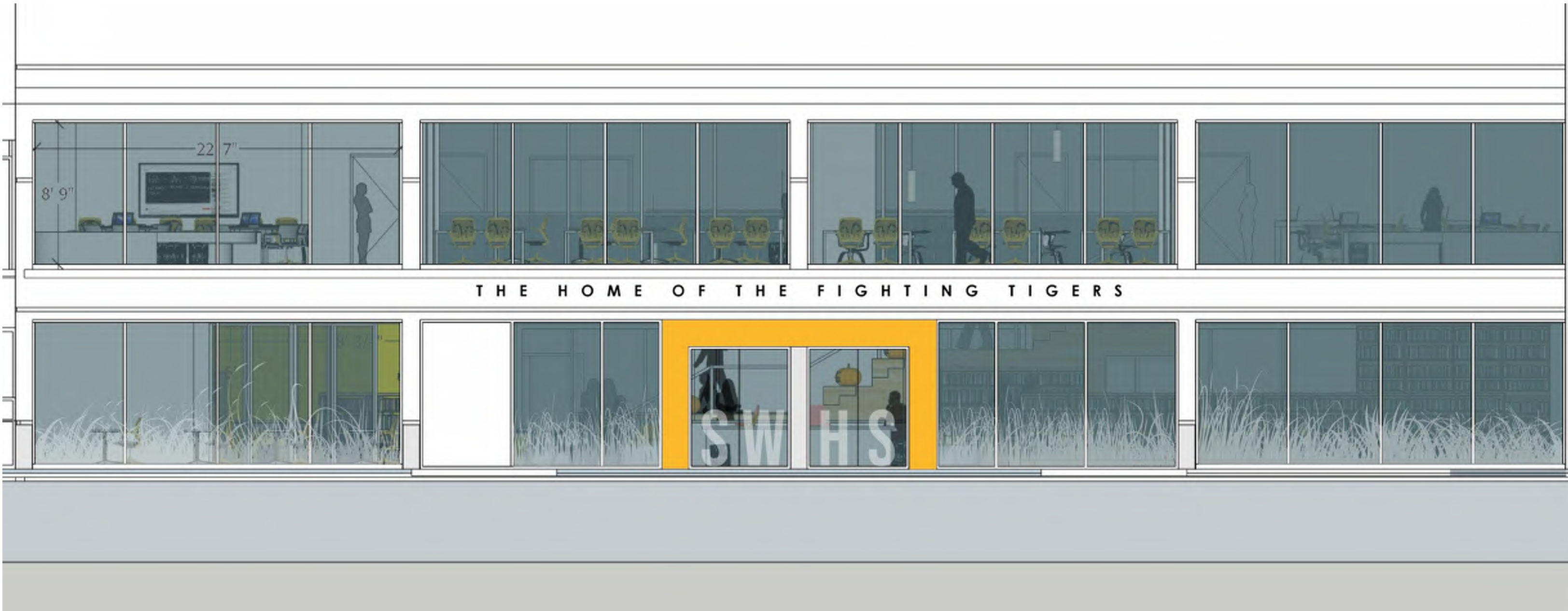






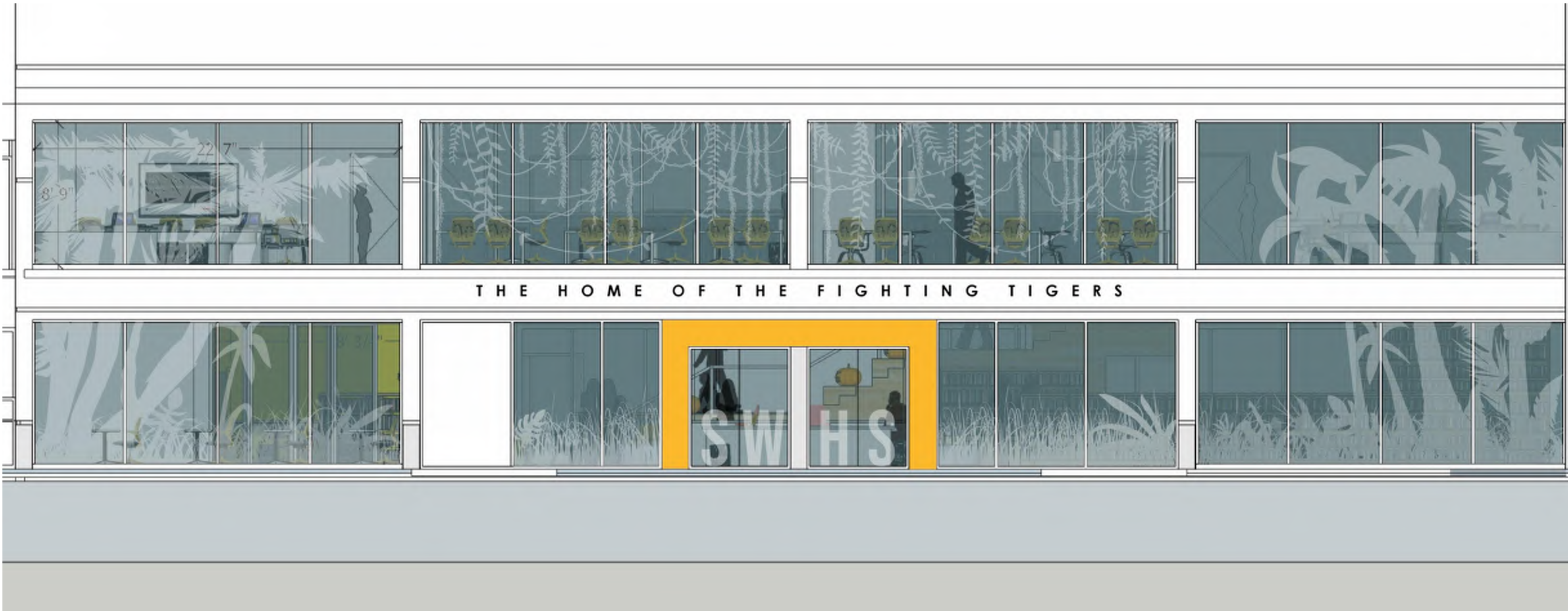
Spring Woods High School Additions and Renovations

Learning Center Exterior View



Spring Woods High School Additions and Renovations

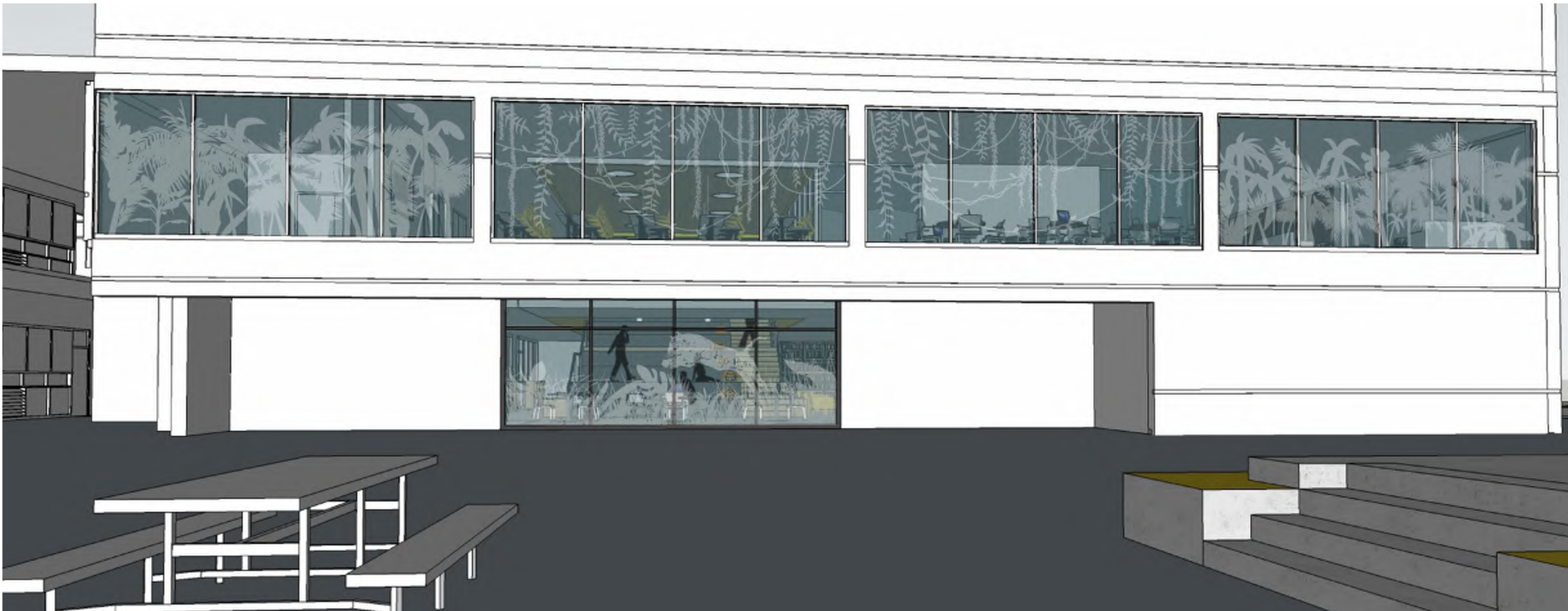
Learning Center Exterior View





Spring Woods High School Additions and Renovations

Learning Center Exterior View



Next Steps



PAT 01

08-31-2018

KICK-OFF

- Gather Data
- Start Design



PAT 02

09-13-2018

Schematic Design

- Layout Options
- Library Services
- Nutrition Services



PAT 03

09-27-2018

Final Schematic Design

- Refine Layout
- Start Interior Concepts



PAT 04

10-04-2018

Design Development

- Review interiors and plans
- Library Services
- Nutrition Services



PAT 05

10-25-2018

Final Design Develop.

- Finalize Overall Design
- Review Interior Finishes and colors



PAT 06

12-18-2018

Final Design Review

- Review Overall Design
- Review Budget
- Review Finishes



Thank you!

