

LANIER ELEMENTARY SCHOOL

▼ Lanier.TulsaSchools.org

f @lainerTPS

Principal: Betty Adams | **Phone:** 918-833-9380 | **Email:** adamsbe@tulsaschools.org | **Address:** 1727 S. Harvard Ave.

ABOUT US

Lanier Elementary is a collaborative pre-kindergarten through fifth grade learning community that prepares each child to make positive and meaningful contributions to our society, our city, and our world. Our mission is to create a safe and comfortable environment where all students will develop cognitively, socially, emotionally, and physically to their best individual potential through differentiated instruction and engaging hands-on learning experiences.

**2 age-appropriate
outdoor play areas**

**Feeder pattern:
Edison Preparatory**

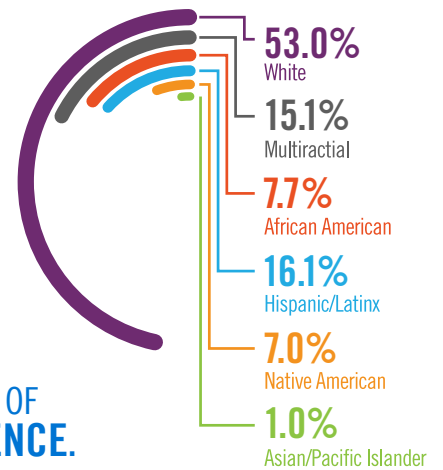
STUDENT DEMOGRAPHICS

298 STUDENTS IN GRADES
PRE-K - 5

12:1 STUDENT TEACHER RATIO

1:1 STUDENT ACCESS TO TECHNOLOGY

OUR 26 TEACHERS HAVE AN AVERAGE OF
15 YEARS OF CLASSROOM EXPERIENCE.



COMMUNITY-CENTERED EXPERIENCES

Community matters at Lanier Elementary School - we are proud of our rich tradition of academic and personal excellence and strive to put our very best efforts into all that we do. Our students foster community spirit through programs like our Student Council which organizes all-school civic engagement projects, our Safety Patrol which pairs our youngest learners with our oldest learners to ensure safe drop-off and dismissal, and all-school celebrations like our annual Vocabulary Day Parade and Reading Counts awards. Our parents carry that community focus forward by creating opportunities for students and families to stay engaged outside of the school day, including our monthly Skate Nights and annual cooking competitions!

COMING SOON

Thanks to the 2015 Bond, Lanier is scheduled for a full renovation of our library in 2019!



FOCUS ON LITERACY

Literacy is a whole-school experience at Lanier! We keep a focus on building strong literacy through our 100 Book and Million Word clubs which challenge our students to read 100 books and beyond by the 100th day of school. We celebrate academic milestones through regular awards assemblies that recognize each student's academic growth and progress over the year. Our students get engaged and excited about reading and are eager to share their updates and milestones with their peers and teachers.

FINE ARTS PROGRAMS

The arts are integrated into student learning experiences at Lanier - you will find art projects across all academic areas from social studies to math to English language arts. Student musicians can study stringed instruments and - with the support of a highly-experienced music teacher - every child at Lanier will have an opportunity to perform in front of his or her peers, parents, and families each year. Our students also study music through our partnership with Sistema Tulsa.



TULSA PUBLIC SCHOOLS AT-A-GLANCE

Our mission is to inspire and prepare every student to love learning, achieve ambitious goals and make positive contributions to our world.

87

Schools and public
charters

23

Schools offering career
and technology
education programs

3

High schools nationally
ranked in the US News
and World Report

5

Schools with dual
language programs

2

Schools with language
immersion programs

1

Public Montessori
school



7,000 DEDICATED EMPLOYEES



3RD LARGEST EMPLOYER IN TULSA COUNTY

LANIER ELEMENTARY

1727 S. Harvard Tulsa, OK 74112 918-833-9380 Lanier.TulsaSchools.org
www.tulsaschools.org