



The School District *of* Haverford Township

Haverford HS Program/Capacity Study & Lynnewood ES Update

August 23rd 2018



LYNNEWOOD ELEMENTARY SCHOOL UPDATE



Lynnewood Elementary School
Proposed Bird's Eye View (2 of 2)
School District of Haverford Township

2018



Lynnewood Elementary School
Proposed Bird's Eye View (1 of 2)
School District of Haverford Township

2018





Lynnewood Elementary School
Perspective from Lawrence Road heading North
School District of Haverford Township

2018



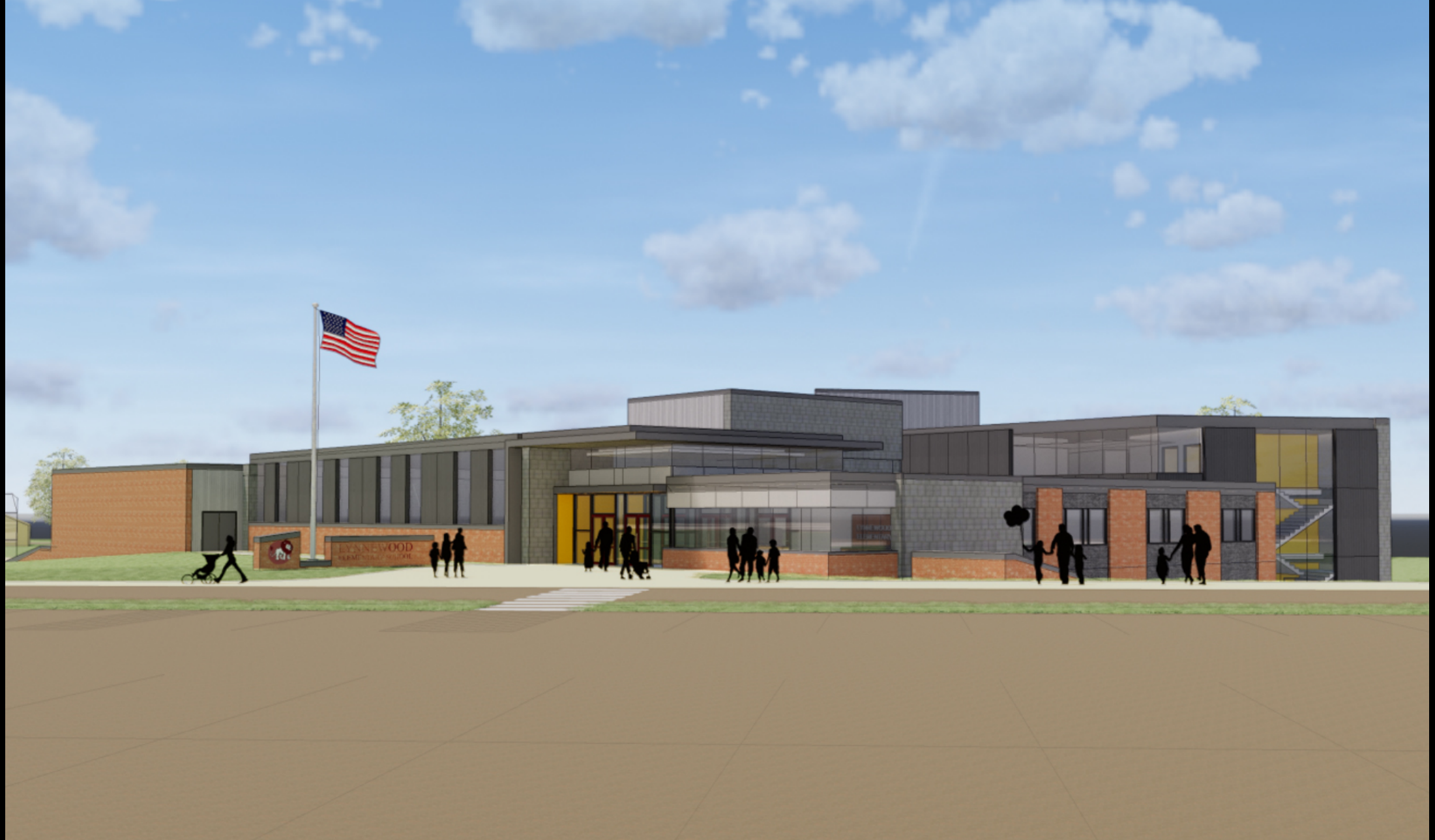
Lynnewood Elementary School
Perspective from Lawrence Road heading North
School District of Haverford Township

2018



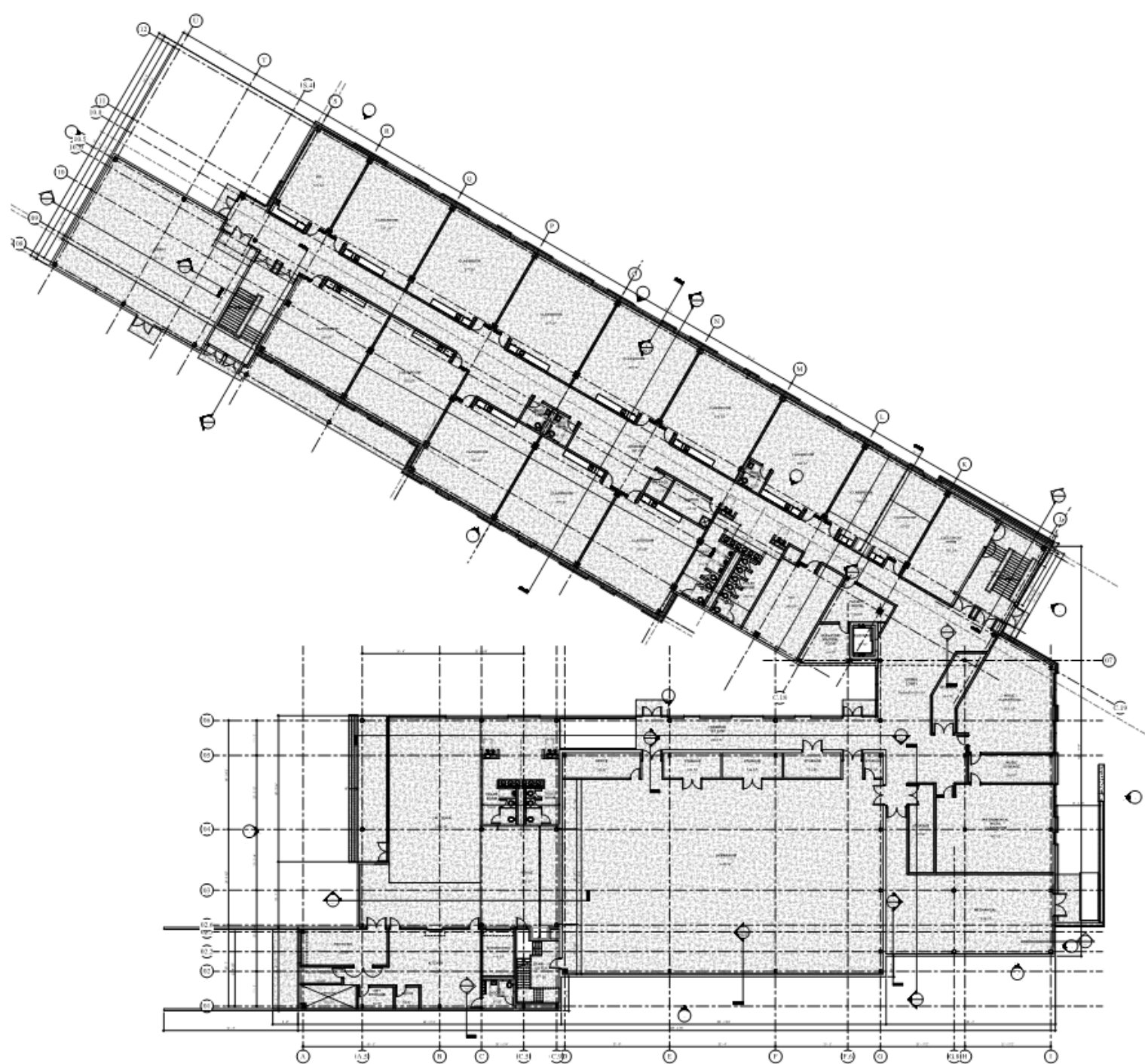
Lynnewood Elementary School
Perspective of Classroom Bar & Cafeteria
School District of Haverford Township

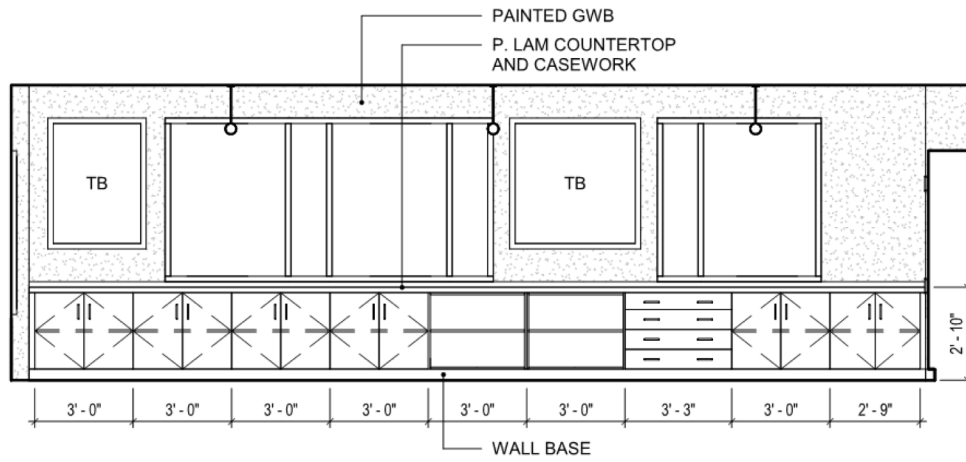
2018



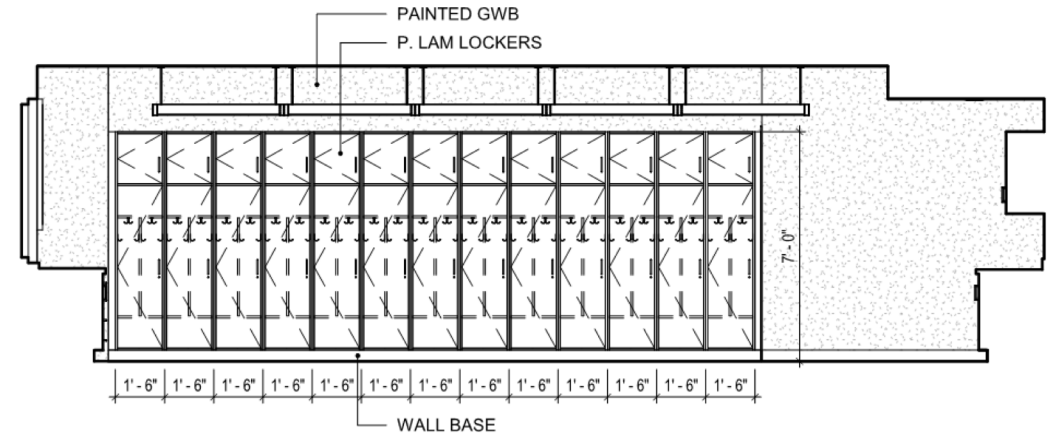
Lynnewood Elementary School
Perspective of Main Entry
School District of Haverford Township

2018

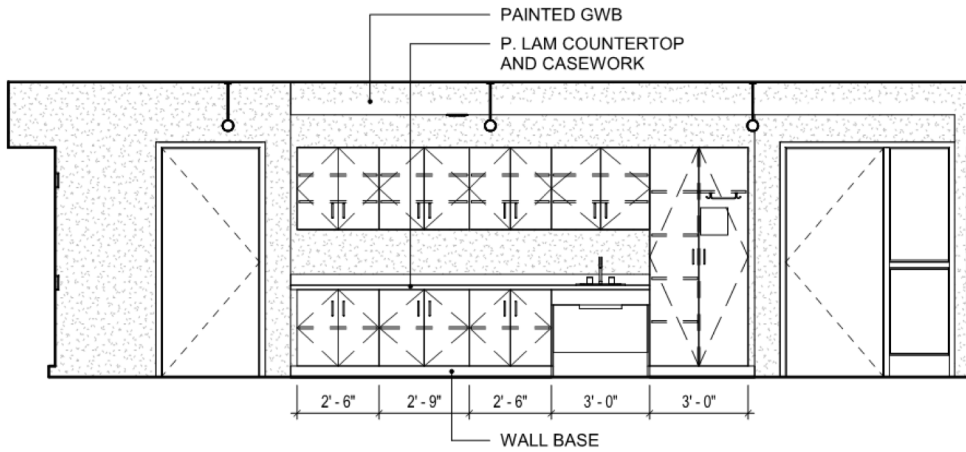




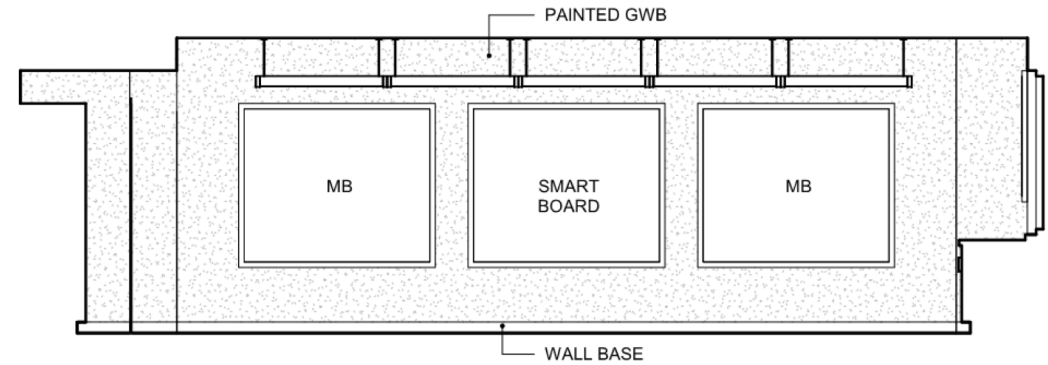
1 CLASSROOM NORTH ELEVATION
A5.1 1/4" = 1'-0"



2 CLASSROOM EAST ELEVATION
A5.1 1/4" = 1'-0"



3 CLASSROOM SOUTH ELEVATION
A5.1 1/4" = 1'-0"



4 CLASSROOM WEST ELEVATION
A5.1 1/4" = 1'-0"

LYNNEWOOD ELEMENTARY SCHOOL

Next Steps

- Zoning & Land Development Submissions [End of August]
- Teacher and PTO meetings [September & October]
- Zoning & Land Development Meetings [End of September]
- Design Development Set Cost Estimation [9/6-9/27]
- **Design Development Presentation to School Board [10/4]**
- **Act 34 Meeting [11/8]**
- Construction Documents 60% [12/20]
- Construction Documents 90% [1/31/19]
- Project out to Bid [2/2019]
- Construction [Opening Fall of 2021]

LYNNEWOOD ELEMENTARY SCHOOL


School Board Key Dates/Decisions

High School

- Decision to move into Design Development [11/15]

Lynnewood

- Decision to move into Construction Documentation [10/4]
- Act 34 Meeting [11/8]
- Decision to Bid Project [Jan or Feb/2019]

An aerial photograph of Lynnewood Elementary School, a large brick building with a red roof, situated in a suburban neighborhood. The school is surrounded by green grassy fields, some of which contain baseball diamonds. A road runs along the left side of the school, and residential houses are visible in the background and foreground. The word "DISCUSSION" is overlaid in large, bold, black letters across the center of the image.

Lynnewood Elementary School

DISCUSSION