

PART IV

BACKGROUND MATERIALS

SPECIAL EDUCATION PROGRAM EXPENSE PER ADA FOR 2015-16

(Total of Goals 5000 - 5999)

RANK	DISTRICT	Revenue per ADA	Expense per ADA	Contribution per ADA	Contribution as % of Special Ed Expense	Contribution as % of Total Expense
1	Shoreline Unified	741.19	3,581.73	2,840.53	79.31%	11.16%
2	Vallecito Union Elementary	41.97	2,107.79	2,065.82	98.01%	15.57%
3	Bret Harte Union High	307.09	2,363.82	2,056.73	87.01%	12.61%
4	Hope Elementary	-65.81	1,588.01	1,653.82	104.14%	15.57%
5	Calistoga Joint Unified	848.54	2,216.83	1,368.29	61.72%	7.35%
6	COMPARATIVE GROUP	673.59	2,031.08	1,357.49	66.84%	9.82%
7	ALL UNIFIED DISTRICTS	814.08	2,040.04	1,225.95	60.09%	10.63%
8	Coast Unified	903.33	2,098.98	1,195.65	56.96%	6.38%
9	ALL HIGH DISTRICTS	757.71	1,949.07	1,191.36	61.12%	9.73%
10	San Luis Coastal Unified	799.81	1,958.10	1,158.29	59.15%	9.32%
11	ALL ELEMENTARY DISTRICTS	713.46	1,700.96	987.50	58.06%	9.01%
12	Mendocino Unified	1,028.82	1,784.87	756.05	42.36%	4.54%
13	Cayucos Elementary	872.53	1,376.03	503.50	36.59%	3.18%

Due to inconsistencies in reporting charter school ADA and financial information, statewide average amounts per ADA may be impacted.

AVERAGE CLASS SIZE BY GRADE LEVEL

Table 1

RANK	DISTRICT	DISTRICT AVERAGE	GRADE K-3	GRADE 4-6	GRADE 7-8	GRADE 9-12
1	San Luis Coastal Unified	25.43	23.79	26.68	25.16	25.71
2	ALL HIGH SCHOOL DISTRICTS	24.89	0.00	0.00	3.30	24.81
3	ALL UNIFIED DISTRICTS	23.65	21.58	26.37	25.03	22.62
4	Hope Elementary	22.32	20.73	24.61	0.00	0.00
5	Vallecito Union Elementary	21.34	21.10	23.39	20.46	0.00
6	ALL ELEMENTARY SCHOOL DISTRICTS	19.89	17.73	21.18	13.90	0.09
7	Cayucos Elementary	19.37	23.00	21.60	17.06	0.00
8	Bret Harte Union High	18.90	0.00	0.00	0.00	18.90
9	COMPARATIVE GROUP	18.85	20.94	21.44	16.38	18.02
10	Calistoga Joint Unified	18.82	22.08	21.20	22.34	16.51
11	Mendocino Unified	17.18	22.00	18.70	18.00	16.64
12	Coast Unified	14.67	23.63	22.56	20.66	11.46
13	Shoreline Unified	13.99	15.88	19.17	0.00	13.22

Table 2

STUDENT ENROLLMENT PER CLASSROOM TEACHER

RANK	DISTRICT	2011	2012	2013	2014	2015
1	Shoreline Unified	13.48	12.59	11.11	10.88	11.85
2	Cayucos Elementary	17.84	14.00	14.11	12.78	12.96
3	Mendocino Unified	15.10	15.39	14.09	14.02	13.30
4	Coast Unified	15.48	16.46	16.65	15.58	15.84
5	Calistoga Joint Unified	16.67	16.51	17.31	16.30	18.51
6	COMPARATIVE GROUP	18.32	18.89	18.67	18.37	18.57
7	Bret Harte Union High	18.96	18.20	19.11	18.54	18.88
8	Vallecito Union Elementary	21.50	20.66	20.03	21.45	19.11
9	Hope Elementary	21.43	19.45	19.21	19.39	19.84
10	San Luis Coastal Unified	19.40	20.32	20.28	20.07	19.93
11	ALL UNIFIED DISTRICTS	22.77	22.62	22.60	22.01	21.48
12	ALL ELEMENTARY SCHOOL DISTRICTS	23.08	23.00	22.74	22.22	21.77
13	ALL HIGH SCHOOL DISTRICTS	24.08	23.95	25.30	23.73	23.06

Beginning with the 2012-13 school year, the CDE modified the data structure of the source data used to generate these reports. As a result, some inconsistencies may appear when reviewing historical information.

Table 3

STUDENT ENROLLMENT PER PUPIL SERVICES AND SPECIAL EDUCATION EMPLOYEE

RANK	DISTRICT	2011	2012	2013	2014	2015
1	Cayucos Elementary	0.00	0.00	0.00	0.00	0.00
2	Mendocino Unified	177.97	192.28	159.76	84.90	103.63
3	Shoreline Unified	195.67	184.67	169.67	129.75	171.00
4	COMPARATIVE GROUP	135.08	145.88	171.70	167.90	183.09
5	San Luis Coastal Unified	122.66	137.09	173.66	180.72	186.48
6	ALL UNIFIED DISTRICTS	269.15	267.08	256.62	245.93	233.30
7	ALL HIGH SCHOOL DISTRICTS	249.90	267.54	259.95	242.49	236.20
8	Coast Unified	266.07	200.53	268.73	255.64	247.86
9	Bret Harte Union High	280.94	260.90	323.21	344.29	269.17
10	ALL ELEMENTARY SCHOOL DISTRICTS	346.74	341.08	335.15	308.34	284.04
11	Calistoga Joint Unified	275.33	202.25	164.40	208.00	288.67
12	Vallecito Union Elementary	0.00	0.00	581.00	577.00	564.00
13	Hope Elementary	0.00	0.00	0.00	0.00	998.00

Beginning with the 2012-13 school year, the CDE modified the data structure of the source data used to generate these reports. As a result, some inconsistencies may appear when reviewing historical information.

STUDENT ENROLLMENT PER NON-ADMINISTRATIVE CERTIFICATED EMPLOYEE

Table 4

RANK	DISTRICT	2011	2012	2013	2014	2015
1	Shoreline Unified	12.61	11.79	10.43	10.04	11.08
2	Mendocino Unified	13.92	14.25	12.95	12.03	11.79
3	Cayucos Elementary	17.84	14.00	14.11	12.78	12.96
4	Coast Unified	14.63	15.22	15.68	14.69	14.89
5	COMPARATIVE GROUP	16.13	16.73	16.84	16.56	16.86
6	Calistoga Joint Unified	15.72	15.26	15.66	15.12	17.40
7	Bret Harte Union High	17.76	17.02	18.05	17.60	17.64
8	San Luis Coastal Unified	16.75	17.70	18.16	18.07	18.00
9	Vallecito Union Elementary	21.50	20.66	19.37	20.68	18.49
10	Hope Elementary	21.43	19.45	19.21	19.39	19.45
11	ALL UNIFIED DISTRICTS	20.99	20.85	20.77	20.20	19.67
12	ALL ELEMENTARY SCHOOL DISTRICTS	21.64	21.55	21.30	20.73	20.22
13	ALL HIGH SCHOOL DISTRICTS	21.96	21.98	23.05	21.62	21.01

Beginning with the 2012-13 school year, the CDE modified the data structure of the source data used to generate these reports. As a result, some inconsistencies may appear when reviewing historical information.

Table 5

STUDENT ENROLLMENT PER ALL CERTIFICATED EMPLOYEES

RANK	DISTRICT	2011	2012	2013	2014	2015
1	Shoreline Unified	11.85	10.86	9.73	9.33	10.32
2	Mendocino Unified	13.53	13.51	12.33	11.50	11.27
3	Cayucos Elementary	16.52	12.40	12.46	11.99	11.54
4	Coast Unified	13.38	13.65	14.54	13.38	13.54
5	Calistoga Joint Unified	14.48	13.95	14.30	13.63	15.53
6	COMPARATIVE GROUP	15.05	15.49	15.56	15.27	15.54
7	San Luis Coastal Unified	15.59	16.39	16.74	16.63	16.57
8	Bret Harte Union High	16.55	15.90	17.11	16.87	16.67
9	Vallecito Union Elementary	19.59	19.02	17.61	18.98	17.09
10	Hope Elementary	19.55	18.03	17.85	17.73	17.73
11	ALL UNIFIED DISTRICTS	19.55	19.42	19.31	18.72	18.31
12	ALL ELEMENTARY SCHOOL DISTRICTS	20.11	20.06	19.80	19.26	18.77
13	ALL HIGH SCHOOL DISTRICTS	20.60	20.71	21.59	20.24	19.65

Beginning with the 2012-13 school year, the CDE modified the data structure of the source data used to generate these reports. As a result, some inconsistencies may appear when reviewing historical information.

Table 6

STUDENT ENROLLMENT PER PARAPROFESSIONAL CLASSIFIED EMPLOYEE

RANK	DISTRICT	2011	2012	2013	2014	2015
1	Cayucos Elementary	37.17	36.17	48.41	32.17	30.00
2	Mendocino Unified	52.50	44.92	60.00	31.63	31.15
3	Hope Elementary	42.42	41.78	57.27	23.43	38.33
4	Vallecito Union Elementary	78.69	71.31	46.11	39.33	39.47
5	Shoreline Unified	94.68	62.95	55.33	66.54	55.28
6	COMPARATIVE GROUP	55.68	59.85	59.19	57.12	56.99
7	San Luis Coastal Unified	55.67	58.46	56.55	59.38	59.38
8	Calistoga Joint Unified	44.41	101.13	108.16	63.71	70.41
9	Coast Unified	82.78	86.59	83.98	59.58	71.69
10	ALL UNIFIED DISTRICTS	121.88	122.32	116.75	87.53	81.27
11	ALL ELEMENTARY SCHOOL DISTRI	115.08	118.08	115.14	88.81	82.91
12	Bret Harte Union High	92.98	101.89	120.67	95.63	83.26
13	ALL HIGH SCHOOL DISTRICTS	140.67	140.31	136.31	127.52	114.06

Beginning with the 2012-13 school year, the CDE modified the data structure of the source data used to generate these reports. As a result, some inconsistencies may appear when reviewing historical information.

Table 7

STUDENT ENROLLMENT PER CLERICAL EMPLOYEE

RANK	DISTRICT	2011	2012	2013	2014	2015
1	<i>Coast Unified</i>	<i>63.14</i>	<i>60.48</i>	<i>62.63</i>	<i>56.38</i>	<i>51.52</i>
2	Shoreline Unified	104.82	145.79	66.97	59.31	58.63
3	Mendocino Unified	55.85	65.24	64.29	70.01	62.13
4	Cayucos Elementary	223.00	217.00	71.00	96.50	70.00
5	Vallecito Union Elementary	122.41	124.79	85.44	70.19	76.42
6	<i>ALL HIGH SCHOOL DISTRICTS</i>	<i>110.99</i>	<i>108.93</i>	<i>110.94</i>	<i>104.24</i>	<i>100.55</i>
7	<i>COMPARATIVE GROUP</i>	<i>116.61</i>	<i>119.54</i>	<i>107.62</i>	<i>106.09</i>	<i>100.82</i>
8	Bret Harte Union High	86.78	94.25	103.43	103.29	102.29
9	San Luis Coastal Unified	127.73	128.28	115.41	113.66	107.21
10	<i>ALL UNIFIED DISTRICTS</i>	<i>131.91</i>	<i>135.14</i>	<i>137.23</i>	<i>126.39</i>	<i>122.14</i>
11	<i>ALL ELEMENTARY SCHOOL DISTRICTS</i>	<i>145.46</i>	<i>148.75</i>	<i>150.19</i>	<i>136.37</i>	<i>132.38</i>
12	Calistoga Joint Unified	118.00	101.13	137.00	138.67	144.33
13	Hope Elementary	139.03	136.94	140.00	114.56	147.63

Beginning with the 2012-13 school year, the CDE modified the data structure of the source data used to generate these reports. As a result, some inconsistencies may appear when reviewing historical information.

Table 8

STUDENT ENROLLMENT PER OTHER CLASSIFIED EMPLOYEE

RANK	DISTRICT	2011	2012	2013	2014	2015
1	Mendocino Unified	20.67	21.08	21.60	20.83	20.72
2	Coast Unified	28.65	34.32	27.57	27.78	26.76
3	Bret Harte Union High	26.39	26.55	28.06	21.52	27.97
4	Shoreline Unified	21.90	51.30	33.49	31.44	34.20
5	Vallecito Union Elementary	42.37	48.31	30.58	34.47	35.03
6	COMPARATIVE GROUP	50.34	51.61	49.38	49.31	50.36
7	Cayucos Elementary	0.00	0.00	66.56	27.57	52.50
8	Calistoga Joint Unified	45.38	43.03	47.79	41.21	54.81
9	ALL UNIFIED DISTRICTS	64.70	64.60	65.05	58.40	56.63
10	San Luis Coastal Unified	64.78	59.30	56.81	58.83	57.67
11	ALL ELEMENTARY SCHOOL DISTRICTS	69.22	70.35	69.00	62.56	60.28
12	ALL HIGH SCHOOL DISTRICTS	71.27	71.77	69.66	67.57	64.73
13	Hope Elementary	113.75	112.05	86.90	71.10	77.67

Beginning with the 2012-13 school year, the CDE modified the data structure of the source data used to generate these reports. As a result, some inconsistencies may appear when reviewing historical information.

Table 9

STUDENT ENROLLMENT PER ALL CLASSIFIED EMPLOYEES

RANK	DISTRICT	2011	2012	2013	2014	2015
1	Mendocino Unified	11.72	11.76	12.74	10.65	10.37
2	Coast Unified	15.92	17.48	15.59	14.18	14.14
3	Vallecito Union Elementary	22.48	23.40	15.13	14.56	14.93
4	Cayucos Elementary	31.86	31.00	20.09	12.87	15.00
5	Shoreline Unified	15.21	23.68	15.91	15.70	15.53
6	Bret Harte Union High	16.62	17.21	18.66	15.01	17.38
7	COMPARATIVE GROUP	21.55	22.50	21.53	21.18	21.13
8	Hope Elementary	25.28	24.90	27.69	15.27	21.86
9	San Luis Coastal Unified	24.26	23.94	22.75	23.45	22.98
10	Calistoga Joint Unified	18.86	23.25	26.69	21.20	25.40
11	ALL UNIFIED DISTRICTS	32.01	32.20	32.03	27.43	26.21
12	ALL ELEMENTARY SCHOOL DISTRICTS	33.32	34.01	33.52	28.92	27.62
13	ALL HIGH SCHOOL DISTRICTS	33.17	33.07	32.57	31.02	29.27

Beginning with the 2012-13 school year, the CDE modified the data structure of the source data used to generate these reports. As a result, some inconsistencies may appear when reviewing historical information.

Table 10

STUDENT ENROLLMENT PER ADULTS WITH STUDENT CONTACT

RANK	DISTRICT	2011	2012	2013	2014	2015
1	Mendocino Unified	11.00	10.82	10.65	8.72	8.55
2	Cayucos Elementary	12.05	10.09	10.92	9.15	9.05
3	Shoreline Unified	11.13	9.93	8.78	8.72	9.23
4	Coast Unified	12.43	12.94	13.21	11.78	12.33
5	Vallecito Union Elementary	16.89	16.02	13.64	13.56	12.59
6	Hope Elementary	14.24	13.27	14.39	10.61	12.90
7	COMPARATIVE GROUP	12.51	13.07	13.11	12.84	13.01
8	San Luis Coastal Unified	12.88	13.58	13.75	13.85	13.82
9	Calistoga Joint Unified	11.61	13.26	13.68	12.22	13.95
10	Bret Harte Union High	14.91	14.58	15.70	14.86	14.56
11	ALL UNIFIED DISTRICTS	17.91	17.82	17.63	16.41	15.84
12	ALL ELEMENTARY SCHOOL DISTRICTS	18.21	18.22	17.97	16.81	16.26
13	ALL HIGH SCHOOL DISTRICTS	19.00	19.01	19.72	18.48	17.74

Beginning with the 2012-13 school year, the CDE modified the data structure of the source data used to generate these reports. As a result, some inconsistencies may appear when reviewing historical information.

Table 11

STUDENT ENROLLMENT PER SCHOOL LEVEL ADMINISTRATOR

RANK	DISTRICT	2011	2012	2013	2014	2015
1	Shoreline Unified	251.93	184.67	169.67	152.65	150.88
2	Cayucos Elementary	0.00	144.67	142.00	193.00	210.00
3	Calistoga Joint Unified	236.00	202.25	234.86	208.00	216.50
4	Vallecito Union Elementary	264.40	239.60	193.67	230.80	225.60
5	Coast Unified	288.76	258.31	254.83	242.41	239.31
6	Mendocino Unified	525.00	275.38	270.00	275.50	271.50
7	COMPARATIVE GROUP	337.59	315.36	313.02	303.69	304.21
8	Hope Elementary	333.67	328.67	336.00	343.67	332.67
9	San Luis Coastal Unified	355.75	360.44	350.62	348.00	347.81
10	ALL UNIFIED DISTRICTS	416.67	415.66	405.67	380.92	400.64
11	ALL ELEMENTARY SCHOOL DISTRICTS	465.98	463.59	448.50	426.57	408.82
12	ALL HIGH SCHOOL DISTRICTS	501.24	560.42	539.20	499.04	485.56
13	Bret Harte Union High	419.89	430.86	676.64	675.70	675.47

Beginning with the 2012-13 school year, the CDE modified the data structure of the source data used to generate these reports. As a result, some inconsistencies may appear when reviewing historical information.

Table 12

STUDENT ENROLLMENT PER DISTRICT LEVEL ADMINISTRATOR

RANK	DISTRICT	2011	2012	2013	2014	2015
1	Shoreline Unified	889.39	554.00	1,018.00	1,038.00	0.00
2	Vallecito Union Elementary	1,322.00	0.00	0.00	0.00	0.00
3	Cayucos Elementary	223.00	434.00	426.00	0.00	210.00
4	Coast Unified	343.32	272.14	923.75	390.56	396.57
5	Calistoga Joint Unified	826.00	809.00	548.00	416.00	433.00
6	Hope Elementary	667.33	986.00	1,008.00	515.50	499.00
7	San Luis Coastal Unified	600.33	572.79	549.48	519.58	519.31
8	Bret Harte Union High	574.26	554.41	646.43	1,047.83	555.04
9	COMPARATIVE GROUP	664.39	620.00	595.74	552.00	569.70
10	ALL ELEMENTARY SCHOOL DISTRICTS	732.42	780.67	756.11	748.03	721.38
11	ALL UNIFIED DISTRICTS	895.23	879.01	853.15	776.03	774.20
12	ALL HIGH SCHOOL DISTRICTS	983.10	987.16	910.78	880.24	823.09
13	Mendocino Unified	5,250.00	5,480.00	5,400.00	5,510.00	5,430.00

Beginning with the 2012-13 school year, the CDE modified the data structure of the source data used to generate these reports. As a result, some inconsistencies may appear when reviewing historical information.

COMPARATIVE ANALYSIS OF CERTIFICATED SALARIES AND BENEFITS, 2016-17

SELECTED COMPARATIVE DISTRICT DATA

RANKED BY AVERAGE DAILY ATTENDANCE

Table 1

DISTRICT NAME	RANK	2016-17 P-2 ADA	TOTAL SALARY SCHEDULE COST	TOTAL SALARY SCHEDULE FTE	ADA/FTE RATIO*	Upp**
STATEWIDE UNIFIED AVERAGE	1	3,796,661	15,415,295,529	196,267.95	19.34	63.17%
REGION 08 UNIFIED AVERAGE	2	149,449	562,425,171	7,696.87	19.42	47.23%
COMPARATIVE GROUP AVERAGE	3	30,917	122,175,768	1,747.36	17.69	43.67%
LUCIA MAR UNIFIED	4	10,159	39,050,468	584.21	17.39	50.91%
SAN LUIS COASTAL UNIFIED	5	7,228	32,339,126	433.73	16.66	38.85%
PASO ROBLES JOINT UNIFIED	6	6,595	25,026,371	351.98	18.74	51.63%
ATASCADERO UNIFIED	7	4,430	15,753,490	230.61	19.21	36.80%
TEMPLETON UNIFIED	8	2,303	8,949,152	130.58	17.64	17.95%
COAST UNIFIED	9	614	3,503,954	47.00	13.06	67.35%
CAYUCOS ELEMENTARY	10	202	1,057,161	16.25	12.44	35.50%

* This ratio is derived by dividing district P-2 ADA by certificated staff paid on the teacher salary schedule.

**Unduplicated Pupil Percentage

Comparative group average does not include the client district.

Region 08 includes the counties of Kern, San Luis Obispo, Santa Barbara and Ventura .

TOTAL CERTIFICATED SALARIES FOR 2015-16

Table 1

RANK	DISTRICT	Certificated Salaries Per ADA	Certificated Salaries Dollars	% of Total Expense	% of Total Expense, Transfers & Other Uses
1	Shoreline Unified	9,077.81	4,658,549.01	36.33%	35.67%
2	Calistoga Joint Unified	7,650.18	6,338,482.67	45.43%	41.10%
3	Coast Unified	6,786.96	4,489,778.28	36.84%	36.21%
4	Mendocino Unified	6,682.82	3,353,570.68	40.67%	40.11%
5	Cayucos Elementary	6,552.60	1,309,275.10	43.05%	41.41%
6	Bret Harte Union High	6,468.53	4,151,048.09	40.43%	39.66%
7	COMPARATIVE GROUP	5,893.08	66,635,036.65	43.56%	42.63%
8	San Luis Coastal Unified	5,481.63	38,975,252.07	44.60%	44.11%
9	Hope Elementary	5,430.37	5,284,892.06	51.24%	51.13%
10	ALL HIGH SCHOOL DISTRICTS	5,182.78	2,536,672,614.36	43.33%	42.34%
11	ALL UNIFIED DISTRICTS	5,046.17	19,576,187,681.06	44.61%	43.77%
12	ALL ELEMENTARY SCHOOL DISTRICTS	4,817.82	5,219,235,268.25	45.20%	43.98%
13	Vallecito Union Elementary	4,757.96	2,563,966.97	36.89%	35.87%

UNRESTRICTED CERTIFICATED SALARIES FOR 2015-16

1	Shoreline Unified	7,047.91	3,616,847.35	38.46%	37.60%
2	Calistoga Joint Unified	6,940.37	5,750,372.17	51.34%	45.39%
3	Coast Unified	5,885.87	3,893,682.29	40.25%	39.39%
4	Cayucos Elementary	5,586.32	1,116,201.72	45.35%	43.24%
5	Mendocino Unified	5,530.19	2,775,161.59	44.27%	43.47%
6	Bret Harte Union High	5,279.82	3,388,217.31	42.52%	41.48%
7	COMPARATIVE GROUP	4,961.07	56,096,464.81	48.30%	46.96%
8	Hope Elementary	4,688.82	4,563,208.64	61.75%	61.56%
9	San Luis Coastal Unified	4,614.09	32,806,886.26	49.12%	48.42%
10	ALL HIGH SCHOOL DISTRICTS	4,295.79	2,102,539,202.87	48.41%	47.16%
11	ALL UNIFIED DISTRICTS	4,038.54	15,667,188,591.74	50.55%	49.32%
12	ALL ELEMENTARY SCHOOL DISTRICTS	3,995.27	4,328,156,013.03	51.32%	49.59%
13	Vallecito Union Elementary	3,859.06	2,079,569.77	44.54%	42.73%

Due to inconsistencies in reporting charter school ADA and financial information, statewide average amounts per ADA may be impacted.

CERTIFICATED NON-MANAGEMENT PERSONNEL SALARY EXPENSE FOR 2015-16

RANK	DISTRICT	Certificated Non-Mgmt Salaries Per ADA	Certificated Non-Mgmt Salaries Dollars	% of Total Expense	% of Total Expense, Transfers & Other Uses
1	Shoreline Unified	8,384.16	4,302,580.69	33.56%	32.94%
2	Calistoga Joint Unified	6,716.06	5,564,524.60	39.88%	36.08%
3	Bret Harte Union High	6,154.04	3,949,233.92	38.47%	37.73%
4	Mendocino Unified	5,972.10	2,996,918.23	36.34%	35.84%
5	Coast Unified	5,933.81	3,925,392.53	32.21%	31.66%
6	Cayucos Elementary	5,645.39	1,128,006.00	37.09%	35.68%
7	COMPARATIVE GROUP	5,283.03	59,736,981.91	39.05%	38.21%
8	San Luis Coastal Unified	4,915.70	34,951,394.18	39.99%	39.55%
9	Hope Elementary	4,761.94	4,634,367.46	44.93%	44.84%
10	ALL HIGH SCHOOL DISTRICTS	4,715.37	2,307,899,317.07	39.42%	38.52%
11	ALL UNIFIED DISTRICTS	4,569.40	17,726,607,476.50	40.39%	39.63%
12	ALL ELEMENTARY SCHOOL DISTRI	4,331.26	4,692,141,164.24	40.63%	39.54%
13	Vallecito Union Elementary	4,101.02	2,209,956.83	31.80%	30.92%

UNRESTRICTED CERTIFICATED NON-MANAGEMENT PERSONNEL SALARY EXPENSE FOR 2015-16

1	Shoreline Unified	6,354.26	3,260,879.03	34.68%	33.90%
2	Calistoga Joint Unified	6,006.24	4,976,414.10	44.43%	39.28%
3	Coast Unified	5,032.72	3,329,296.54	34.42%	33.68%
4	Bret Harte Union High	4,965.33	3,186,403.14	39.99%	39.01%
5	Mendocino Unified	4,932.98	2,475,470.14	39.49%	38.77%
6	Cayucos Elementary	4,696.18	938,344.00	38.13%	36.35%
7	COMPARATIVE GROUP	4,382.78	49,557,543.57	42.67%	41.48%
8	Hope Elementary	4,134.72	4,023,950.19	54.45%	54.29%
9	San Luis Coastal Unified	4,070.72	28,943,497.24	43.34%	42.71%
10	ALL HIGH SCHOOL DISTRICTS	3,869.51	1,893,901,252.90	43.61%	42.48%
11	ALL UNIFIED DISTRICTS	3,625.07	14,063,148,973.13	45.37%	44.27%
12	ALL ELEMENTARY SCHOOL DISTRI	3,561.82	3,858,581,942.83	45.75%	44.21%
13	Vallecito Union Elementary	3,252.27	1,752,585.73	37.54%	36.01%

Due to inconsistencies in reporting charter school ADA and financial information, statewide average amounts per ADA may be impacted.

SITE AND DISTRICT ADMINISTRATOR SALARY EXPENSE FOR 2015-16
 (Total of Object Codes 1300 and 2300)

RANK	DISTRICT	Admin Salary Per ADA	Admin Salary Dollars	% of Total Expense	% of Total Expense, Transfers & Other Uses
1	Calistoga Joint Unified	1,382.37	1,145,345.51	8.21%	7.43%
2	Mendocino Unified	1,358.94	681,940.99	8.27%	8.16%
3	Coast Unified	1,316.38	870,825.64	7.14%	7.02%
4	Shoreline Unified	1,128.10	578,918.69	4.52%	4.43%
5	Vallecito Union Elementary	969.34	522,360.07	7.52%	7.31%
6	Cayucos Elementary	907.21	181,269.10	5.96%	5.73%
7	Hope Elementary	856.46	833,514.89	8.08%	8.06%
8	Bret Harte Union High	841.17	539,801.99	5.26%	5.16%
9	COMPARATIVE GROUP	818.21	9,251,721.74	6.05%	5.92%
10	San Luis Coastal Unified	670.67	4,768,570.50	5.46%	5.40%
11	ALL ELEMENTARY SCHOOL DISTRI	622.60	674,479,048.83	5.84%	5.68%
12	ALL UNIFIED DISTRICTS	609.83	2,365,777,339.32	5.39%	5.29%
13	ALL HIGH SCHOOL DISTRICTS	600.93	294,121,892.88	5.02%	4.91%

UNRESTRICTED SITE AND DISTRICT ADMINISTRATOR SALARY EXPENSE FOR 2015-16

1	Coast Unified	1,316.38	870,825.64	9.00%	8.81%
2	Calistoga Joint Unified	1,279.61	1,060,209.98	9.47%	8.37%
3	Shoreline Unified	1,128.10	578,918.69	6.16%	6.02%
4	Mendocino Unified	1,115.20	559,629.91	8.93%	8.77%
5	Cayucos Elementary	890.13	177,857.72	7.23%	6.89%
6	Bret Harte Union High	841.17	539,801.99	6.77%	6.61%
7	Vallecito Union Elementary	838.46	451,826.89	9.68%	9.28%
8	COMPARATIVE GROUP	747.01	8,446,672.37	7.27%	7.07%
9	Hope Elementary	665.01	647,192.55	8.76%	8.73%
10	San Luis Coastal Unified	623.23	4,431,234.64	6.64%	6.54%
11	ALL HIGH SCHOOL DISTRICTS	541.12	264,845,075.43	6.10%	5.94%
12	ALL ELEMENTARY SCHOOL DISTRI	540.60	585,643,978.94	6.94%	6.71%
13	ALL UNIFIED DISTRICTS	521.20	2,021,969,065.13	6.52%	6.36%

Due to inconsistencies in reporting charter school ADA and financial information, statewide average amounts per ADA may be impacted.

TOTAL CLASSIFIED SALARIES FOR 2015-16

RANK	DISTRICT	Classified Salaries Per ADA	Classified Salaries Dollars	% of Total Expense	% of Total Expense, Transfers & Other Uses
1	Shoreline Unified	4,100.06	2,104,069.70	16.41%	16.11%
2	Mendocino Unified	3,278.19	1,645,062.02	19.95%	19.67%
3	Coast Unified	3,272.23	2,164,679.03	17.76%	17.46%
4	Bret Harte Union High	3,118.21	2,001,047.68	19.49%	19.12%
5	Vallecito Union Elementary	2,551.21	1,374,797.85	19.78%	19.23%
6	Calistoga Joint Unified	2,491.48	2,064,288.56	14.79%	13.39%
7	COMPARATIVE GROUP	2,446.98	27,668,783.58	18.09%	17.70%
8	San Luis Coastal Unified	2,283.29	16,234,540.81	18.58%	18.37%
9	Hope Elementary	1,921.97	1,870,477.08	18.14%	18.10%
10	Cayucos Elementary	1,874.28	374,499.88	12.31%	11.85%
11	ALL HIGH SCHOOL DISTRICTS	1,833.85	897,561,735.38	15.33%	14.98%
12	ALL UNIFIED DISTRICTS	1,687.06	6,544,813,928.07	14.91%	14.63%
13	ALL ELEMENTARY SCHOOL DISTRI	1,550.97	1,680,190,624.17	14.55%	14.16%

UNRESTRICTED CLASSIFIED SALARIES FOR 2015-16

1	Shoreline Unified	3,449.84	1,770,387.90	18.83%	18.41%
2	Coast Unified	2,968.03	1,963,438.67	20.30%	19.86%
3	Bret Harte Union High	2,438.91	1,565,123.36	19.64%	19.16%
4	Mendocino Unified	2,299.51	1,153,941.87	18.41%	18.07%
5	Calistoga Joint Unified	2,011.45	1,666,567.78	14.88%	13.16%
6	COMPARATIVE GROUP	1,723.94	19,493,104.49	16.78%	16.32%
7	Cayucos Elementary	1,664.60	332,604.58	13.51%	12.88%
8	San Luis Coastal Unified	1,605.30	11,413,921.88	17.09%	16.84%
9	Vallecito Union Elementary	1,513.10	815,377.52	17.46%	16.75%
10	ALL HIGH SCHOOL DISTRICTS	1,305.70	639,065,672.81	14.71%	14.33%
11	ALL UNIFIED DISTRICTS	1,106.15	4,291,234,475.66	13.85%	13.51%
12	ALL ELEMENTARY SCHOOL DISTRI	1,027.20	1,112,785,488.81	13.20%	12.75%
13	Hope Elementary	796.52	775,179.60	10.49%	10.46%

Due to inconsistencies in reporting charter school ADA and financial information, statewide average amounts per ADA may be impacted.

CLASSIFIED NON-MANAGEMENT PERSONNEL SALARY EXPENSE FOR 2015-16

RANK	DISTRICT	Classified Non-Mgmt Per ADA	Classified Non-Mgmt Dollars	% of Total Expense	% of Total Expense, Transfers & Other Uses
1	Shoreline Unified	3,665.61	1,881,119.33	14.67%	14.40%
2	Coast Unified	2,809.00	1,858,239.14	15.25%	14.99%
3	Mendocino Unified	2,629.97	1,319,773.48	16.00%	15.78%
4	Bret Harte Union High	2,591.53	1,663,059.86	16.20%	15.89%
5	COMPARATIVE GROUP	2,238.82	25,315,116.58	16.55%	16.19%
6	Vallecito Union Elementary	2,238.81	1,206,447.92	17.36%	16.88%
7	San Luis Coastal Unified	2,178.55	15,489,828.20	17.72%	17.53%
8	Calistoga Joint Unified	2,043.23	1,692,901.12	12.13%	10.98%
9	Cayucos Elementary	1,874.28	374,499.88	12.31%	11.85%
10	Hope Elementary	1,733.94	1,687,486.79	16.36%	16.33%
11	ALL HIGH SCHOOL DISTRICTS	1,700.33	832,213,139.79	14.22%	13.89%
12	ALL UNIFIED DISTRICTS	1,554.00	6,028,616,793.31	13.74%	13.48%
13	ALL ELEMENTARY SCHOOL DISTRICTS	1,414.92	1,532,805,679.35	13.27%	12.92%

UNRESTRICTED CLASSIFIED NON-MANAGEMENT SALARY EXPENSE FOR 2015-16

1	Shoreline Unified	3,015.39	1,547,437.53	16.46%	16.09%
2	Coast Unified	2,504.80	1,656,998.78	17.13%	16.76%
3	Bret Harte Union High	1,912.23	1,227,135.54	15.40%	15.02%
4	Mendocino Unified	1,781.52	894,003.41	14.26%	14.00%
5	Calistoga Joint Unified	1,665.96	1,380,315.87	12.32%	10.90%
6	Cayucos Elementary	1,664.60	332,604.58	13.51%	12.88%
7	COMPARATIVE GROUP	1,555.22	17,585,353.36	15.14%	14.72%
8	San Luis Coastal Unified	1,525.43	10,846,076.26	16.24%	16.01%
9	Vallecito Union Elementary	1,281.43	690,534.67	14.79%	14.19%
10	ALL HIGH SCHOOL DISTRICTS	1,190.86	582,858,547.35	13.42%	13.07%
11	ALL UNIFIED DISTRICTS	998.42	3,873,305,029.14	12.50%	12.19%
12	ALL ELEMENTARY SCHOOL DISTRICTS	920.06	996,715,580.07	11.82%	11.42%
13	Hope Elementary	685.61	667,245.50	9.03%	9.00%

Due to inconsistencies in reporting charter school ADA and financial information, statewide average amounts per ADA may be impacted.

TOTAL EMPLOYEE BENEFIT EXPENSE FOR 2015-16

RANK	DISTRICT	Employee Benefits Per ADA	Employee Benefits Dollars	% of Total Expense, Transfers & Other Uses	% of Total Salary
1	Shoreline Unified	7,075.66	3,631,088.90	27.80%	53.69%
2	Mendocino Unified	4,148.69	2,081,894.83	24.90%	41.65%
3	Coast Unified	3,466.21	2,292,998.97	18.49%	34.46%
4	Cayucos Elementary	3,327.98	664,964.26	21.03%	39.49%
5	Bret Harte Union High	3,213.38	2,062,120.03	19.70%	33.52%
6	COMPARATIVE GROUP	2,980.25	33,698,685.79	21.56%	35.73%
7	Vallecito Union Elementary	2,915.98	1,571,361.26	21.98%	39.89%
8	Calistoga Joint Unified	2,824.33	2,340,069.66	15.17%	27.85%
9	San Luis Coastal Unified	2,728.23	19,398,159.54	21.95%	35.14%
10	ALL HIGH SCHOOL DISTRICTS	2,677.12	1,310,293,458.25	21.87%	38.15%
11	ALL UNIFIED DISTRICTS	2,541.93	9,861,193,158.52	22.05%	37.75%
12	ALL ELEMENTARY SCHOOL DISTRI	2,263.75	2,452,363,010.00	20.66%	35.54%
13	Hope Elementary	2,002.68	1,949,027.31	18.86%	27.24%

UNRESTRICTED EMPLOYEE BENEFIT EXPENSE FOR 2015-16

1	Shoreline Unified	5,237.68	2,687,874.65	27.94%	49.89%
2	Mendocino Unified	2,901.82	1,456,192.90	22.81%	37.06%
3	Cayucos Elementary	2,736.37	546,754.62	21.18%	37.74%
4	Coast Unified	2,678.09	1,771,635.89	17.92%	30.25%
5	Bret Harte Union High	2,293.84	1,472,024.77	18.02%	29.72%
6	COMPARATIVE GROUP	2,132.71	24,115,243.17	20.19%	31.90%
7	Calistoga Joint Unified	2,088.88	1,730,718.78	13.66%	23.33%
8	San Luis Coastal Unified	1,943.08	13,815,634.97	20.39%	31.24%
9	ALL HIGH SCHOOL DISTRICTS	1,925.77	942,552,593.98	21.14%	34.38%
10	Vallecito Union Elementary	1,810.43	975,602.28	20.05%	33.70%
11	ALL UNIFIED DISTRICTS	1,722.47	6,682,168,495.07	21.03%	33.48%
12	ALL ELEMENTARY SCHOOL DISTRI	1,615.80	1,750,423,294.02	20.06%	32.17%
13	Hope Elementary	1,469.82	1,430,440.20	19.30%	26.80%

Due to inconsistencies in reporting charter school ADA and financial information, statewide average amounts per ADA may be impacted.

HEALTH AND WELFARE BENEFIT EXPENSE FOR 2015-16
 (Total of Object Codes 3401, 3402, 3901, and 3902)

RANK	DISTRICT	Health Welfare Per ADA	Health Welfare Dollars	% of Total Expense, Transfers and Other Uses	% of Total Salary
1	Shoreline Unified	3,950.66	2,027,397.56	15.52%	29.98%
2	Mendocino Unified	1,900.01	953,464.53	11.40%	19.07%
3	Cayucos Elementary	1,722.03	344,079.64	10.88%	20.44%
4	Coast Unified	1,359.18	899,135.52	7.25%	13.51%
5	Bret Harte Union High	1,241.25	796,544.56	7.61%	12.95%
6	ALL HIGH SCHOOL DISTRICTS	1,202.85	588,728,122.58	9.83%	17.14%
7	COMPARATIVE GROUP	1,184.75	13,396,402.39	8.57%	14.21%
8	Vallecito Union Elementary	1,090.39	587,590.26	8.22%	14.92%
9	San Luis Coastal Unified	1,022.78	7,272,137.74	8.23%	13.17%
10	ALL UNIFIED DISTRICTS	1,017.30	3,946,532,389.54	8.82%	15.11%
11	ALL ELEMENTARY SCHOOL DISTRI	951.77	1,031,075,800.25	8.69%	14.94%
12	Hope Elementary	817.07	795,184.74	7.69%	11.11%
13	Calistoga Joint Unified	748.31	620,003.36	4.02%	7.38%

UNRESTRICTED HEALTH AND WELFARE BENEFIT EXPENSE FOR 2015-16

1	Shoreline Unified	3,237.18	1,661,255.96	17.27%	30.84%
2	Cayucos Elementary	1,630.44	325,778.33	12.62%	22.49%
3	Mendocino Unified	1,412.96	709,051.50	11.11%	18.05%
4	Coast Unified	1,195.97	791,169.14	8.00%	13.51%
5	Bret Harte Union High	980.28	629,075.15	7.70%	12.70%
6	COMPARATIVE GROUP	958.91	10,842,745.03	9.08%	14.34%
7	ALL HIGH SCHOOL DISTRICTS	947.40	463,699,590.44	10.40%	16.91%
8	San Luis Coastal Unified	838.62	5,962,693.73	8.80%	13.48%
9	Vallecito Union Elementary	809.56	436,257.59	8.96%	15.07%
10	ALL UNIFIED DISTRICTS	765.84	2,971,024,490.08	9.35%	14.89%
11	ALL ELEMENTARY SCHOOL DISTRI	761.60	825,059,321.05	9.45%	15.16%
12	Calistoga Joint Unified	663.77	549,963.65	4.34%	7.41%
13	Hope Elementary	584.32	568,669.12	7.67%	10.65%

Due to inconsistencies in reporting charter school ADA and financial information, statewide average amounts per ADA may be impacted.

OTHER POST-EMPLOYMENT BENEFITS EXPENSE FOR 2015-16
 (Total of Object Codes 3701, 3702, 3751 and 3752)

RANK	DISTRICT	OPEB Per ADA	Other Post-Employment Benefits Dollars	% of Total Expense, Transfers and Other Uses	% of Total Salary
1	Shoreline Unified	217.52	111,627.01	0.85%	1.65%
2	ALL UNIFIED DISTRICTS	186.34	722,905,642.98	1.62%	2.77%
3	Vallecito Union Elementary	178.30	96,083.28	1.34%	2.44%
4	Bret Harte Union High	171.91	110,321.31	1.05%	1.79%
5	San Luis Coastal Unified	135.83	965,742.40	1.09%	1.75%
6	COMPARATIVE GROUP	131.85	1,490,859.33	0.95%	1.58%
7	ALL HIGH SCHOOL DISTRICTS	114.46	56,023,094.93	0.94%	1.63%
8	Mendocino Unified	102.55	51,462.41	0.62%	1.03%
9	ALL ELEMENTARY SCHOOL DISTRICTS	89.04	96,456,280.94	0.81%	1.40%
10	Calistoga Joint Unified	87.95	72,866.72	0.47%	0.87%
11	Hope Elementary	85.03	82,756.20	0.80%	1.16%
12	Coast Unified	0.00	0.00	0.00%	0.00%
13	Cayucos Elementary	0.00	0.00	0.00%	0.00%

UNRESTRICTED OTHER POST-EMPLOYMENT BENEFITS EXPENSE FOR 2015-16

1	Shoreline Unified	217.52	111,627.01	0.85%	1.65%
2	Vallecito Union Elementary	178.30	96,083.28	1.34%	2.44%
3	Bret Harte Union High	171.91	110,321.31	1.05%	1.79%
4	ALL UNIFIED DISTRICTS	141.71	549,741,246.11	1.23%	2.10%
5	San Luis Coastal Unified	135.83	965,742.40	1.09%	1.75%
6	COMPARATIVE GROUP	131.85	1,490,859.33	0.95%	1.58%
7	Mendocino Unified	102.55	51,462.41	0.62%	1.03%
8	ALL HIGH SCHOOL DISTRICTS	100.93	49,400,310.87	0.82%	1.44%
9	Calistoga Joint Unified	87.95	72,866.72	0.47%	0.87%
10	Hope Elementary	85.03	82,756.20	0.80%	1.16%
11	ALL ELEMENTARY SCHOOL DISTRICTS	77.80	84,286,111.23	0.71%	1.22%
12	Coast Unified	0.00	0.00	0.00%	0.00%
13	Cayucos Elementary	0.00	0.00	0.00%	0.00%

Due to inconsistencies in reporting charter school ADA and financial information, statewide average amounts per ADA may be impacted.

ALL PERSONNEL SALARY AND BENEFIT EXPENSES FOR 2015-16

RANK	DISTRICT	% of Total Expense	% of Total Expense, Transfers and Other Uses	Personnel Salary & Benefits per ADA	Personnel Salary & Benefits Dollars
1	Hope Elementary	88.27%	88.08%	9,355.02	9,104,396.45
2	Mendocino Unified	85.87%	84.68%	14,109.70	7,080,527.53
3	San Luis Coastal Unified	85.37%	84.43%	10,493.15	74,607,952.42
4	COMPARATIVE GROUP	83.67%	81.88%	11,320.31	128,002,506.02
5	ALL UNIFIED DISTRICTS	81.99%	80.44%	9,275.15	35,982,194,767.65
6	Shoreline Unified	81.07%	79.58%	20,253.53	10,393,707.61
7	ALL HIGH SCHOOL DISTRICTS	81.04%	79.19%	9,693.74	4,744,527,807.99
8	ALL ELEMENTARY SCHOOL DISTRICTS	80.98%	78.80%	8,632.54	9,351,788,902.42
9	Bret Harte Union High	80.01%	78.48%	12,800.11	8,214,215.80
10	Vallecito Union Elementary	79.28%	77.08%	10,225.14	5,510,126.08
11	Cayucos Elementary	77.23%	74.29%	11,754.86	2,348,739.24
12	Calistoga Joint Unified	76.99%	69.67%	12,965.99	10,742,840.89
13	Coast Unified	73.41%	72.15%	13,525.40	8,947,456.28

UNRESTRICTED PERSONNEL SALARY AND BENEFIT EXPENSES FOR 2015-16

1	Hope Elementary	91.59%	91.32%	6,955.16	6,768,828.44
2	San Luis Coastal Unified	86.90%	85.65%	8,162.47	58,036,443.11
3	ALL UNIFIED DISTRICTS	85.95%	83.86%	6,867.16	26,640,591,562.47
4	Mendocino Unified	85.90%	84.35%	10,731.53	5,385,296.36
5	Shoreline Unified	85.87%	83.95%	15,735.43	8,075,109.90
6	COMPARATIVE GROUP	85.84%	83.46%	8,817.71	99,704,812.47
7	ALL ELEMENTARY SCHOOL DISTRICTS	85.27%	82.40%	6,638.27	7,191,364,795.86
8	ALL HIGH SCHOOL DISTRICTS	84.83%	82.64%	7,527.26	3,684,157,469.66
9	Vallecito Union Elementary	82.90%	79.53%	7,182.58	3,870,549.57
10	Calistoga Joint Unified	81.67%	72.21%	11,040.70	9,147,658.73
11	Cayucos Elementary	81.08%	77.30%	9,987.29	1,995,560.92
12	Bret Harte Union High	80.64%	78.66%	10,012.57	6,425,365.44
13	Coast Unified	78.87%	77.17%	11,531.99	7,628,756.85

Due to inconsistencies in reporting charter school ADA and financial information, statewide average amounts per ADA may be impacted.

DISTRICT ADMINISTRATIVE SERVICES EXPENSE PER ADA FOR 2015-16

(Total of Function Codes 7000-7999)

RANK	DISTRICT	District Admin Cost per ADA	% of Total General Fund Expense	Total District Admin Cost
1	<i>Coast Unified</i>	<i>2,164.67</i>	<i>11.75%</i>	<i>1,431,995.49</i>
2	Calistoga Joint Unified	1,873.56	11.13%	1,552,317.10
3	Cayucos Elementary	1,717.13	11.28%	343,099.07
4	Mendocino Unified	1,419.03	8.64%	712,098.12
5	Shoreline Unified	1,397.85	5.59%	717,346.78
6	Bret Harte Union High	1,275.07	7.97%	818,253.10
7	Vallecito Union Elementary	1,196.60	9.28%	644,821.72
8	<i>COMPARATIVE GROUP</i>	<i>989.18</i>	<i>7.31%</i>	<i>11,184,935.23</i>
9	Hope Elementary	893.35	8.43%	869,417.11
10	San Luis Coastal Unified	777.42	6.33%	5,527,582.23
11	<i>ALL HIGH DISTRICTS</i>	<i>737.27</i>	<i>6.16%</i>	<i>360,851,095.73</i>
12	<i>ALL ELEMENTARY DISTRICTS</i>	<i>660.04</i>	<i>6.19%</i>	<i>715,038,650.59</i>
13	<i>ALL UNIFIED DISTRICTS</i>	<i>634.33</i>	<i>5.61%</i>	<i>2,460,837,699.84</i>

Due to inconsistencies in reporting charter school ADA and financial information, statewide average amounts per ADA may be impacted.

INSTRUCTIONAL ADMINISTRATIVE SERVICES EXPENSE PER ADA FOR 2015-16

(Total of Function Codes 2100 to 2150)

RANK	DISTRICT	District Instructional Cost per ADA	% of Total General Fund Expense	Total Instructional Admin Cost
1	San Luis Coastal Unified	599.75	4.88%	4,264,317.36
2	ALL UNIFIED DISTRICTS	462.22	4.09%	1,793,144,063.18
3	COMPARATIVE GROUP	422.06	3.12%	4,772,417.16
4	ALL HIGH DISTRICTS	333.31	2.79%	163,134,623.79
5	ALL ELEMENTARY DISTRICTS	316.80	2.97%	343,200,658.32
6	Mendocino Unified	258.35	1.57%	129,646.28
7	Calistoga Joint Unified	222.04	1.32%	183,966.86
8	Hope Elementary	143.52	1.35%	139,674.60
9	Cayucos Elementary	121.88	0.80%	24,353.57
10	Vallecito Union Elementary	52.26	0.41%	28,159.64
11	Shoreline Unified	2.05	0.01%	1,050.00
12	Bret Harte Union High	1.95	0.01%	1,248.85
13	Coast Unified	0.00	0.00%	0.00

Due to inconsistencies in reporting charter school ADA and financial information, statewide average amounts per ADA may be impacted.

SCHOOL ADMINISTRATIVE SERVICES EXPENSE PER ADA FOR 2015-16

(Total of Function Code 2700)

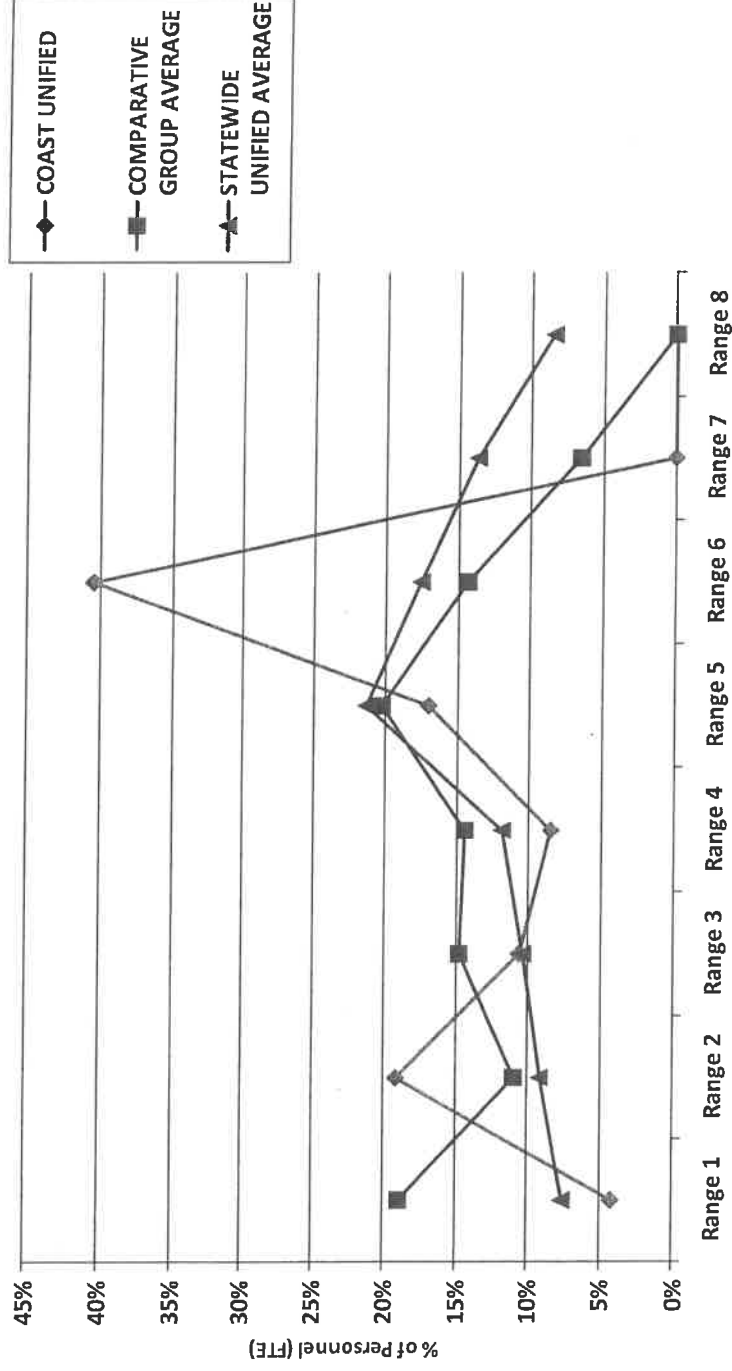
RANK	DISTRICT	School Admin Cost per ADA	% of Total General Fund Expense	Total School Admin Cost
1	Shoreline Unified	2,199.68	8.80%	1,128,831.39
2	Vallecito Union Elementary	1,402.89	10.88%	755,990.93
3	Calistoga Joint Unified	1,293.30	7.68%	1,071,551.70
4	Mendocino Unified	1,276.53	7.77%	640,590.15
5	Cayucos Elementary	1,227.86	8.07%	245,338.94
6	Coast Unified	1,094.78	5.94%	724,228.20
7	COMPARATIVE GROUP	987.61	7.30%	11,167,190.63
8	San Luis Coastal Unified	865.80	7.04%	6,155,974.19
9	ALL HIGH DISTRICTS	779.89	6.52%	381,712,610.17
10	Hope Elementary	778.07	7.34%	757,224.48
11	ALL UNIFIED DISTRICTS	744.05	6.58%	2,886,492,990.03
12	ALL ELEMENTARY DISTRICTS	673.74	6.32%	729,871,585.45
13	Bret Harte Union High	641.53	4.01%	411,688.85

Due to inconsistencies in reporting charter school ADA and financial information, statewide average amounts per ADA may be impacted.

COAST UNIFIED

Comparative Analysis of Certificated Salaries

2016-17 Salary Distribution

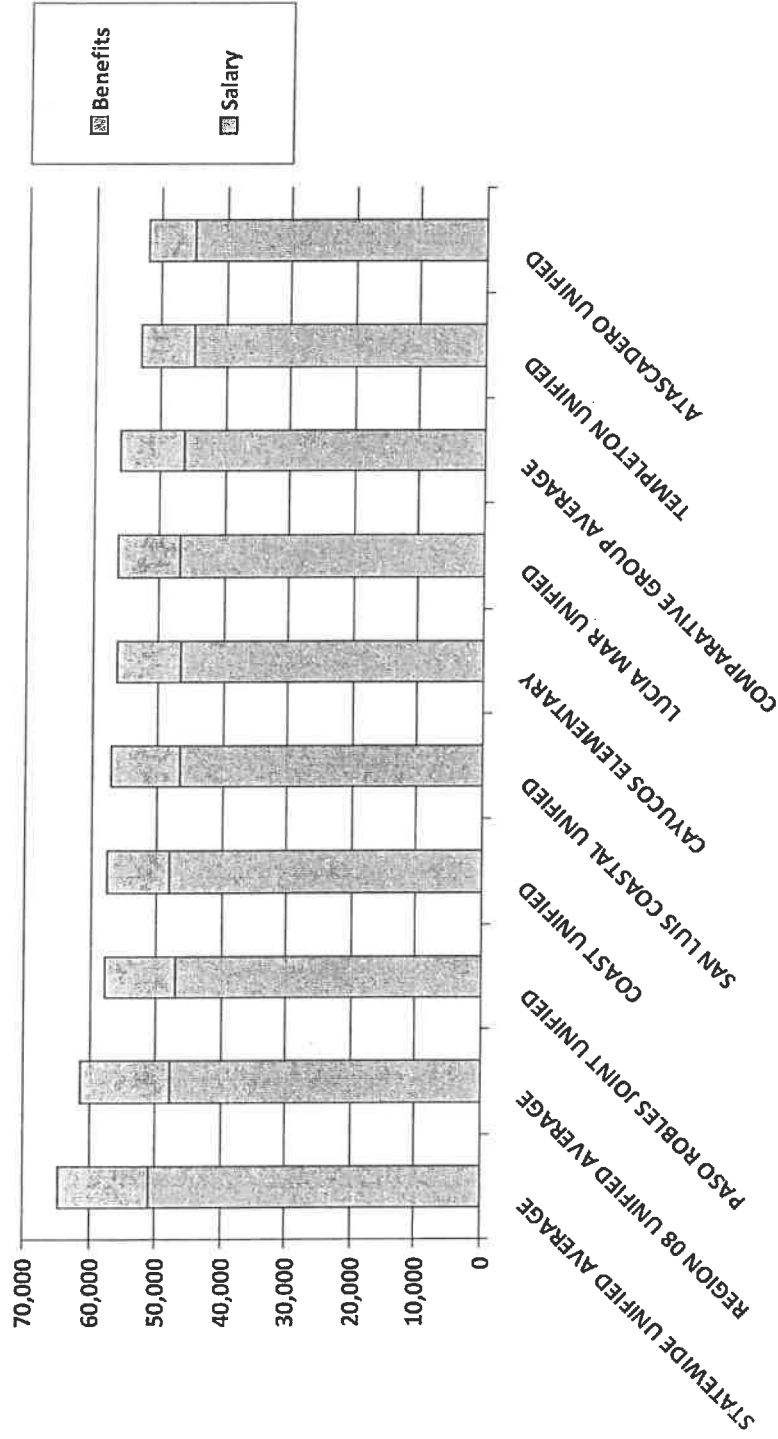


Ranges

1: Less than \$52,000	3: \$60,000 - \$68,000	5: \$76,000 - \$84,000	7: \$92,000 - \$100,000
2: \$52,000 - \$60,000	4: \$68,000 - \$76,000	6: \$84,000 - \$92,000	8: Greater than \$100,000

COAST UNIFIED

Total Compensation: BA+30, Step 1 and Average Health and Welfare Benefits, 2016-17

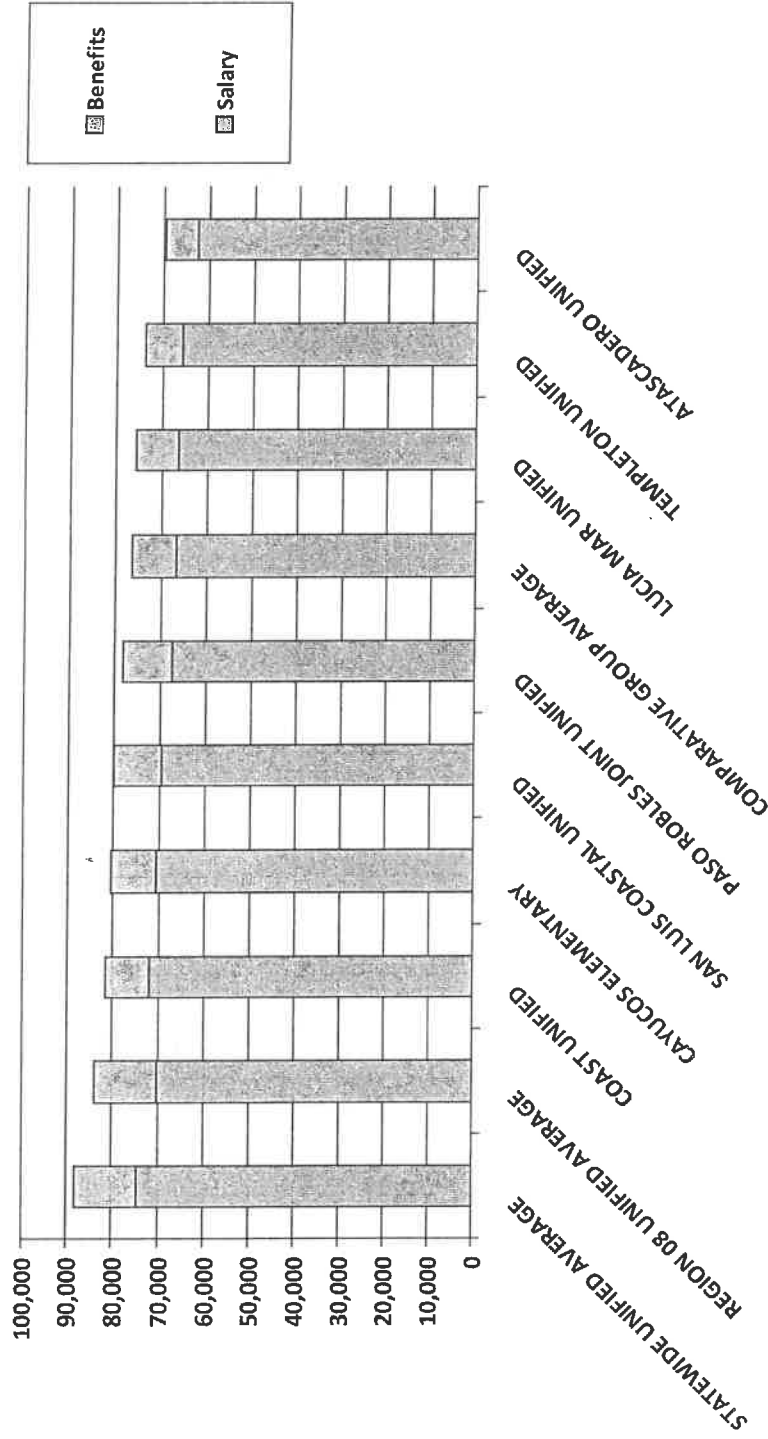


See Part II, Table 12 for compensation amounts

Graph 3

COAST UNIFIED

Total Compensation: BA+60, Step 10 and Average Health and Welfare Benefits, 2016-17

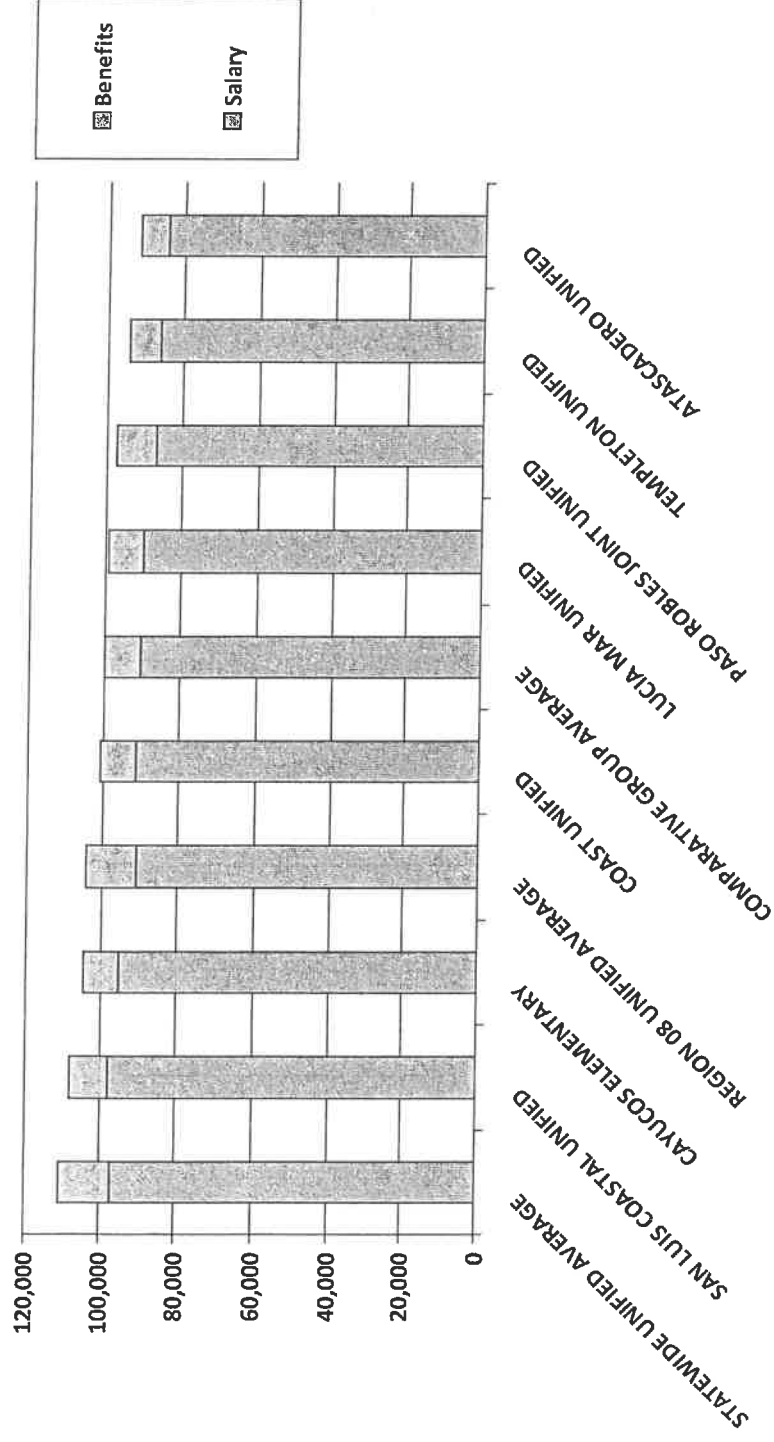


See Part II, Table 13 for compensation amounts

Graph 4

COAST UNIFIED

Total Compensation: Maximum Scheduled Salary and Average Health and Welfare Benefits, 2016-17

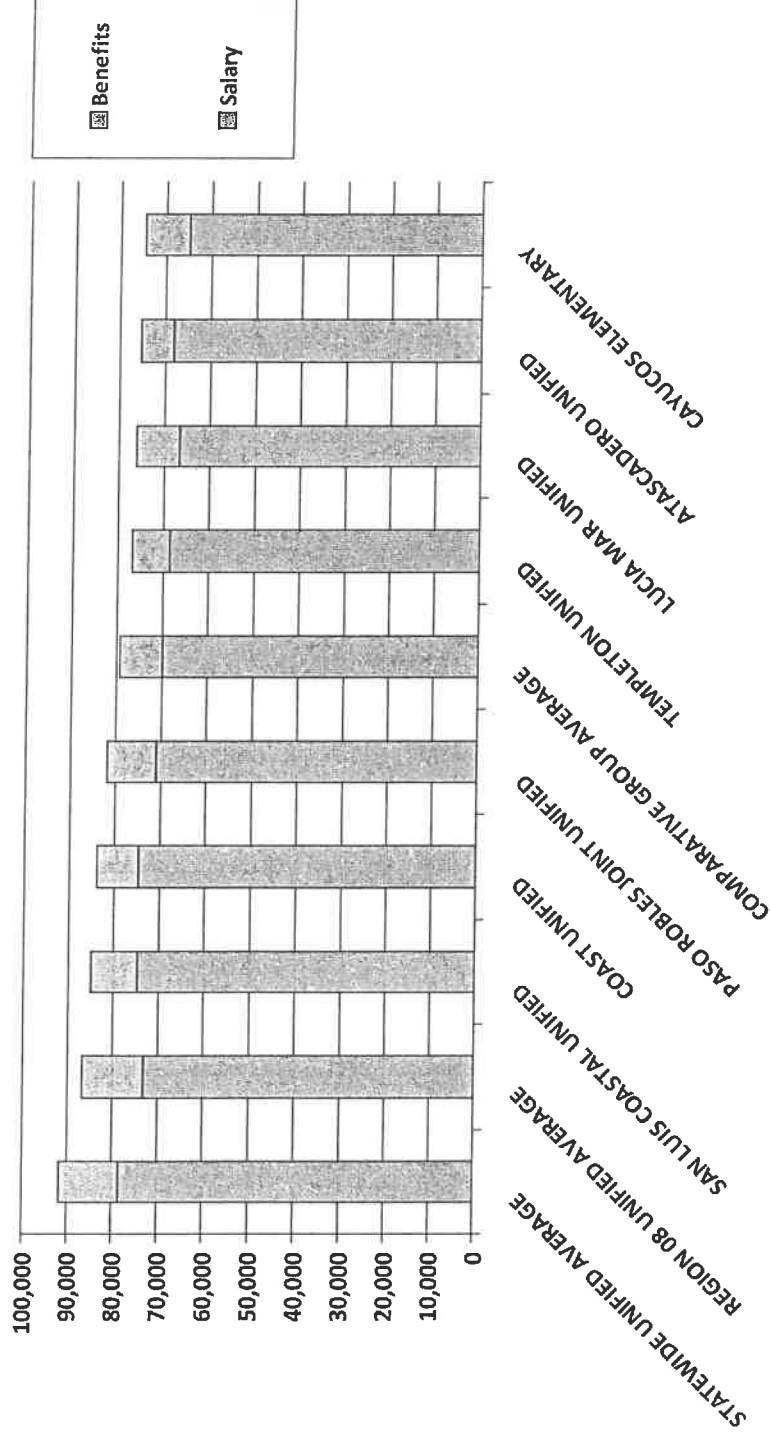


See Part II, Table 14 for compensation amounts

Graph 5

COAST UNIFIED

Total Compensation: Computed Average Salary and Average Health and Welfare Benefits, 2016-17



See Part II, Table 15 for compensation amounts

Graph 6

BOOKS AND SUPPLIES EXPENSE FOR 2015-16

RANK	DISTRICT	Books & Supplies Per ADA	Books & Supplies Dollars	% of Total Expense	% of Total Expense, Transfers and Other Uses
1	Shoreline Unified	1,288.24	661,096.71	5.16%	5.06%
2	Coast Unified	1,256.84	831,435.05	6.82%	6.70%
3	Calistoga Joint Unified	941.92	780,417.44	5.59%	5.06%
4	Bret Harte Union High	885.84	568,472.47	5.54%	5.43%
5	Vallecito Union Elementary	870.73	469,217.60	6.75%	6.56%
6	Mendocino Unified	837.23	420,138.78	5.10%	5.02%
7	Cayucos Elementary	749.92	149,842.49	4.93%	4.74%
8	COMPARATIVE GROUP	617.88	6,986,615.13	4.57%	4.47%
9	ALL HIGH SCHOOL DISTRICTS	599.92	293,624,850.81	5.02%	4.90%
10	ALL ELEMENTARY SCHOOL DISTRICTS	548.93	594,661,165.39	5.15%	5.01%
11	ALL UNIFIED DISTRICTS	531.93	2,063,596,255.51	4.70%	4.61%
12	San Luis Coastal Unified	510.52	3,629,882.36	4.15%	4.11%
13	Hope Elementary	316.01	307,547.28	2.98%	2.98%

UNRESTRICTED BOOKS AND SUPPLIES EXPENSE FOR 2015-16

1	Shoreline Unified	804.35	412,778.13	4.39%	4.29%
2	Coast Unified	803.14	531,299.65	5.49%	5.37%
3	Calistoga Joint Unified	772.07	639,694.20	5.71%	5.05%
4	Bret Harte Union High	632.52	405,910.26	5.09%	4.97%
5	Mendocino Unified	631.36	316,830.71	5.05%	4.96%
6	Cayucos Elementary	597.04	119,294.18	4.85%	4.62%
7	COMPARATIVE GROUP	432.56	4,891,064.15	4.21%	4.09%
8	ALL HIGH SCHOOL DISTRICTS	386.45	189,144,697.41	4.36%	4.24%
9	ALL ELEMENTARY SCHOOL DISTRICTS	381.00	412,740,980.40	4.89%	4.73%
10	Vallecito Union Elementary	371.34	200,108.58	4.29%	4.11%
11	San Luis Coastal Unified	370.63	2,635,261.64	3.95%	3.89%
12	ALL UNIFIED DISTRICTS	332.70	1,290,690,681.66	4.16%	4.06%
13	Hope Elementary	165.62	161,186.45	2.18%	2.17%

Due to inconsistencies in reporting charter school ADA and financial information, statewide average amounts per ADA may be impacted.

SERVICES AND OTHER OPERATING EXPENSE FOR 2015-16

RANK	DISTRICT	Services & Operations Per ADA	Services & Operations Dollars	% of Total Expense	% of Total Expense, Transfers and Other Uses
1	Shoreline Unified	3,272.05	1,679,148.69	13.10%	12.86%
2	Calistoga Joint Unified	2,703.21	2,239,719.65	16.05%	14.52%
3	Coast Unified	2,283.99	1,510,928.04	12.40%	12.18%
4	Cayucos Elementary	2,179.65	435,515.17	14.32%	13.78%
5	Bret Harte Union High	1,881.74	1,207,567.44	11.76%	11.54%
6	Vallecito Union Elementary	1,681.49	906,121.50	13.04%	12.68%
7	Mendocino Unified	1,497.34	751,393.20	9.11%	8.99%
8	COMPARATIVE GROUP	1,425.36	16,117,037.18	10.54%	10.31%
9	ALL HIGH SCHOOL DISTRICTS	1,260.99	617,180,376.13	10.54%	10.30%
10	ALL UNIFIED DISTRICTS	1,256.88	4,875,947,358.26	11.11%	10.90%
11	ALL ELEMENTARY SCHOOL DISTRI	1,165.16	1,262,236,209.36	10.93%	10.64%
12	San Luis Coastal Unified	1,138.36	8,093,897.23	9.26%	9.16%
13	Hope Elementary	825.80	803,674.30	7.79%	7.78%

UNRESTRICTED SERVICES AND OTHER OPERATING EXPENSE FOR 2015-16

1	Shoreline Unified	1,784.32	915,674.94	9.74%	9.52%
2	Calistoga Joint Unified	1,683.31	1,394,690.63	12.45%	11.01%
3	Coast Unified	1,638.47	1,083,896.66	11.21%	10.96%
4	Cayucos Elementary	1,554.58	310,619.64	12.62%	12.03%
5	Bret Harte Union High	1,416.75	909,168.90	11.41%	11.13%
6	Mendocino Unified	1,201.50	602,937.38	9.62%	9.44%
7	Vallecito Union Elementary	1,006.31	542,279.90	11.62%	11.14%
8	COMPARATIVE GROUP	950.11	10,743,169.83	9.25%	8.99%
9	San Luis Coastal Unified	788.71	5,607,847.06	8.40%	8.28%
10	ALL HIGH SCHOOL DISTRICTS	777.97	380,770,375.20	8.77%	8.54%
11	ALL UNIFIED DISTRICTS	724.14	2,809,236,550.11	9.06%	8.84%
12	ALL ELEMENTARY SCHOOL DISTRI	696.64	754,683,889.32	8.95%	8.65%
13	Hope Elementary	472.61	459,951.38	6.22%	6.21%

Due to inconsistencies in reporting charter school ADA and financial information, statewide average amounts per ADA may be impacted.

INSURANCE EXPENSE FOR 2015-16

RANK	DISTRICT	Insurance Per ADA	Insurance Dollars	% of Total Expense	% of Total Expense, Transfers & Other Uses
1	Mendocino Unified	142.10	71,309.64	0.86%	0.85%
2	Shoreline Unified	111.58	57,263.00	0.45%	0.44%
3	Bret Harte Union High	106.62	68,419.75	0.67%	0.65%
4	Calistoga Joint Unified	96.55	79,998.38	0.57%	0.52%
5	Coast Unified	91.65	60,630.11	0.50%	0.49%
6	Vallecito Union Elementary	89.89	48,439.00	0.70%	0.68%
7	COMPARATIVE GROUP	71.59	809,546.29	0.53%	0.52%
8	Cayucos Elementary	69.81	13,948.83	0.46%	0.44%
9	ALL HIGH SCHOOL DISTRICTS	61.59	30,143,985.57	0.51%	0.50%
10	San Luis Coastal Unified	59.46	422,768.77	0.48%	0.48%
11	ALL UNIFIED DISTRICTS	55.39	214,873,724.15	0.49%	0.48%
12	ALL ELEMENTARY SCHOOL DISTRI	52.64	57,029,364.29	0.49%	0.48%
13	Hope Elementary	48.70	47,398.92	0.46%	0.46%

UNRESTRICTED INSURANCE EXPENSE FOR 2015-16

1	Mendocino Unified	142.10	71,309.64	1.14%	1.12%
2	Shoreline Unified	111.58	57,263.00	0.61%	0.60%
3	Bret Harte Union High	106.62	68,419.75	0.86%	0.84%
4	Calistoga Joint Unified	96.55	79,998.38	0.71%	0.63%
5	Vallecito Union Elementary	89.89	48,439.00	1.04%	1.00%
6	Coast Unified	88.48	58,533.11	0.61%	0.59%
7	COMPARATIVE GROUP	70.47	796,866.29	0.69%	0.67%
8	Cayucos Elementary	62.13	12,413.83	0.50%	0.48%
9	ALL HIGH SCHOOL DISTRICTS	61.28	29,991,048.46	0.69%	0.67%
10	San Luis Coastal Unified	57.89	411,623.77	0.62%	0.61%
11	ALL UNIFIED DISTRICTS	54.87	212,862,349.03	0.69%	0.67%
12	ALL ELEMENTARY SCHOOL DISTRI	51.88	56,206,171.43	0.67%	0.64%
13	Hope Elementary	48.70	47,398.92	0.64%	0.64%

Due to inconsistencies in reporting charter school ADA and financial information, statewide average amounts per ADA may be impacted.

UTILITY AND HOUSEKEEPING EXPENSE FOR 2015-16

Table 13

RANK	DISTRICT	Utilities Per ADA	Utility Dollars	% of Total Expense	% of Total Expense, Transfers & Other Uses
1	Bret Harte Union High	593.92	381,133.73	3.71%	3.64%
2	Shoreline Unified	539.90	277,067.69	2.16%	2.12%
3	Coast Unified	402.00	265,937.00	2.18%	2.14%
4	Cayucos Elementary	382.72	76,471.53	2.51%	2.42%
5	Mendocino Unified	340.53	170,883.85	2.07%	2.04%
6	Calistoga Joint Unified	326.14	270,223.36	1.94%	1.75%
7	Vallecito Union Elementary	319.59	172,222.02	2.48%	2.41%
8	COMPARATIVE GROUP	311.51	3,522,356.97	2.30%	2.25%
9	San Luis Coastal Unified	287.82	2,046,470.93	2.34%	2.32%
10	ALL HIGH SCHOOL DISTRICTS	268.39	131,361,633.61	2.24%	2.19%
11	ALL UNIFIED DISTRICTS	220.54	855,565,325.57	1.95%	1.91%
12	ALL ELEMENTARY SCHOOL DISTRI	209.86	227,342,561.47	1.97%	1.92%
13	Hope Elementary	131.40	127,883.86	1.24%	1.24%

UNRESTRICTED UTILITY AND HOUSEKEEPING EXPENSE FOR 2015-16

1	Bret Harte Union High	593.92	381,133.73	4.78%	4.67%
2	Shoreline Unified	539.90	277,067.69	2.95%	2.88%
3	Coast Unified	402.00	265,937.00	2.75%	2.69%
4	Cayucos Elementary	382.72	76,471.53	3.11%	2.96%
5	Mendocino Unified	338.20	169,715.48	2.71%	2.66%
6	Calistoga Joint Unified	326.14	270,223.36	2.41%	2.13%
7	Vallecito Union Elementary	319.59	172,222.02	3.69%	3.54%
8	COMPARATIVE GROUP	306.89	3,470,060.25	2.99%	2.90%
9	San Luis Coastal Unified	280.63	1,995,342.58	2.99%	2.94%
10	ALL HIGH SCHOOL DISTRICTS	266.76	130,565,745.66	3.01%	2.93%
11	ALL UNIFIED DISTRICTS	217.90	845,307,087.93	2.73%	2.66%
12	ALL ELEMENTARY SCHOOL DISTRI	207.76	225,072,319.54	2.67%	2.58%
13	Hope Elementary	131.40	127,883.86	1.73%	1.73%

Due to inconsistencies in reporting charter school ADA and financial information, statewide average amounts per ADA may be impacted.

RENTAL, LEASES, AND REPAIRS EXPENSE FOR 2015-16

Table 14

RANK	DISTRICT	Rentals Per ADA	Rental Dollars	% of Total Expense	% of Total Expense, Transfers & Other Uses
1	<i>Coast Unified</i>	393.57	260,360.95	2.14%	2.10%
2	Bret Harte Union High	275.42	176,746.11	1.72%	1.69%
3	Shoreline Unified	196.11	100,640.61	0.78%	0.77%
4	ALL HIGH SCHOOL DISTRICTS	147.44	72,164,230.71	1.23%	1.20%
5	Hope Elementary	134.83	131,220.98	1.27%	1.27%
6	San Luis Coastal Unified	129.37	919,870.34	1.05%	1.04%
7	COMPARATIVE GROUP	128.56	1,453,616.21	0.95%	0.93%
8	ALL ELEMENTARY SCHOOL DISTRICTS	113.04	122,461,642.34	1.06%	1.03%
9	Cayucos Elementary	96.55	19,292.34	0.63%	0.61%
10	ALL UNIFIED DISTRICTS	95.77	371,512,834.05	0.85%	0.83%
11	Vallecito Union Elementary	74.90	40,362.46	0.58%	0.56%
12	Mendocino Unified	54.48	27,337.00	0.33%	0.33%
13	Calistoga Joint Unified	46.04	38,146.37	0.27%	0.25%

UNRESTRICTED RENTAL, LEASES, AND REPAIRS EXPENSE FOR 2015-16

1	Shoreline Unified	195.06	100,100.89	1.06%	1.04%
2	Bret Harte Union High	125.53	80,555.47	1.01%	0.99%
3	<i>Coast Unified</i>	114.46	75,715.66	0.78%	0.77%
4	Cayucos Elementary	80.84	16,152.34	0.66%	0.63%
5	ALL HIGH SCHOOL DISTRICTS	79.15	38,739,435.24	0.89%	0.87%
6	San Luis Coastal Unified	75.22	534,834.23	0.80%	0.79%
7	COMPARATIVE GROUP	72.66	821,629.69	0.71%	0.69%
8	Vallecito Union Elementary	68.06	36,675.61	0.79%	0.75%
9	ALL ELEMENTARY SCHOOL DISTRICTS	62.55	67,759,394.44	0.80%	0.78%
10	ALL UNIFIED DISTRICTS	61.06	236,879,066.26	0.76%	0.75%
11	Mendocino Unified	53.39	26,793.80	0.43%	0.42%
12	Calistoga Joint Unified	26.99	22,363.96	0.20%	0.18%
13	Hope Elementary	4.27	4,153.39	0.06%	0.06%

Due to inconsistencies in reporting charter school ADA and financial information, statewide average amounts per ADA may be impacted.

CAPITAL OUTLAY EXPENSE FOR 2015-16

RANK	DISTRICT	Capital Outlay Per ADA	Capital Outlay Dollars	% of Total Expense	% of Total Expense, Transfers & Other Uses
1	Coast Unified	762.57	504,464.40	4.14%	4.07%
2	Bret Harte Union High	287.99	184,809.93	1.80%	1.77%
3	Cayucos Elementary	219.10	43,778.86	1.44%	1.38%
4	Calistoga Joint Unified	183.95	152,407.68	1.09%	0.99%
5	ALL HIGH SCHOOL DISTRICTS	177.90	87,072,138.39	1.49%	1.45%
6	ALL ELEMENTARY SCHOOL DISTRICTS	129.58	140,378,958.16	1.22%	1.18%
7	ALL UNIFIED DISTRICTS	129.57	502,649,755.67	1.15%	1.12%
8	Vallecito Union Elementary	108.16	58,285.88	0.84%	0.82%
9	Hope Elementary	100.94	98,238.91	0.95%	0.95%
10	COMPARATIVE GROUP	90.72	1,025,850.35	0.67%	0.66%
11	San Luis Coastal Unified	68.68	488,329.09	0.56%	0.55%
12	Shoreline Unified	0.00	0.00	0.00%	0.00%
13	Mendocino Unified	0.00	0.00	0.00%	0.00%

UNRESTRICTED CAPITAL OUTLAY EXPENSE FOR 2015-16

1	Coast Unified	739.83	489,421.40	5.06%	4.95%
2	Bret Harte Union High	260.56	167,207.51	2.10%	2.05%
3	Cayucos Elementary	219.10	43,778.86	1.78%	1.70%
4	Calistoga Joint Unified	169.38	140,334.97	1.25%	1.11%
5	Vallecito Union Elementary	108.16	58,285.88	1.25%	1.20%
6	ALL HIGH SCHOOL DISTRICTS	98.29	48,106,316.18	1.11%	1.08%
7	COMPARATIVE GROUP	77.14	872,293.66	0.75%	0.73%
8	ALL ELEMENTARY SCHOOL DISTRICTS	73.33	79,439,180.26	0.94%	0.91%
9	ALL UNIFIED DISTRICTS	70.29	272,703,468.02	0.88%	0.86%
10	San Luis Coastal Unified	65.07	462,686.44	0.69%	0.68%
11	Shoreline Unified	0.00	0.00	0.00%	0.00%
12	Hope Elementary	0.00	0.00	0.00%	0.00%
13	Mendocino Unified	0.00	0.00	0.00%	0.00%

Due to inconsistencies in reporting charter school ADA and financial information, statewide average amounts per ADA may be impacted.

LAND, BUILDINGS, AND BOOKS AND MEDIA EXPENSES FOR 2015-16

RANK	DISTRICT	Non-Equipment Capital per ADA	Non-Equipment Capital Dollars	% of Total Expense	% of Total Expense, Transfers & Other Uses
1	Coast Unified	682.74	451,654.50	3.71%	3.64%
2	Bret Harte Union High	228.36	146,546.33	1.43%	1.40%
3	Hope Elementary	100.94	98,238.91	0.95%	0.95%
4	ALL UNIFIED DISTRICTS	80.14	310,905,094.34	0.71%	0.70%
5	ALL HIGH SCHOOL DISTRICTS	79.13	38,731,834.00	0.66%	0.65%
6	ALL ELEMENTARY SCHOOL DISTRI	78.92	85,491,830.40	0.74%	0.72%
7	COMPARATIVE GROUP	22.21	251,086.00	0.16%	0.16%
8	Calistoga Joint Unified	7.60	6,300.76	0.05%	0.04%
9	Shoreline Unified	0.00	0.00	0.00%	0.00%
10	San Luis Coastal Unified	0.00	0.00	0.00%	0.00%
11	Cayucos Elementary	0.00	0.00	0.00%	0.00%
12	Mendocino Unified	0.00	0.00	0.00%	0.00%
13	Vallecito Union Elementary	0.00	0.00	0.00%	0.00%

UNRESTRICTED LAND, BUILDINGS, AND BOOKS AND MEDIA EXPENSES FOR 2015-16

1	Coast Unified	682.74	451,654.50	4.67%	4.57%
2	Bret Harte Union High	228.36	146,546.33	1.84%	1.79%
3	ALL ELEMENTARY SCHOOL DISTRI	35.99	38,991,089.79	0.46%	0.45%
4	ALL UNIFIED DISTRICTS	34.85	135,214,906.09	0.44%	0.43%
5	ALL HIGH SCHOOL DISTRICTS	25.32	12,392,732.66	0.29%	0.28%
6	COMPARATIVE GROUP	12.96	146,546.33	0.13%	0.12%
7	Shoreline Unified	0.00	0.00	0.00%	0.00%
8	Hope Elementary	0.00	0.00	0.00%	0.00%
9	San Luis Coastal Unified	0.00	0.00	0.00%	0.00%
10	Cayucos Elementary	0.00	0.00	0.00%	0.00%
11	Calistoga Joint Unified	0.00	0.00	0.00%	0.00%
12	Mendocino Unified	0.00	0.00	0.00%	0.00%
13	Vallecito Union Elementary	0.00	0.00	0.00%	0.00%

Due to inconsistencies in reporting charter school ADA and financial information, statewide average amounts per ADA may be impacted.

OTHER OUTGO EXPENSE FOR 2015-16

(Total of Object Codes 7000 through 7499)

RANK	DISTRICT	All Other Per ADA	All Other Dollars	% of Total Expense	% of Total Expense, Transfers & Other Uses
1	<i>Coast Unified</i>	<i>595.16</i>	<i>393,716.75</i>	<i>3.23%</i>	<i>3.18%</i>
2	Cayucos Elementary	316.15	63,170.60	2.08%	2.00%
3	<i>ALL HIGH SCHOOL DISTRICTS</i>	<i>228.90</i>	<i>112,034,381.29</i>	<i>1.91%</i>	<i>1.87%</i>
4	<i>ALL ELEMENTARY SCHOOL DISTRI</i>	<i>183.67</i>	<i>198,969,069.82</i>	<i>1.72%</i>	<i>1.68%</i>
5	Shoreline Unified	170.26	87,376.00	0.68%	0.67%
6	Bret Harte Union High	141.88	91,048.66	0.89%	0.87%
7	<i>ALL UNIFIED DISTRICTS</i>	<i>118.75</i>	<i>460,673,391.93</i>	<i>1.05%</i>	<i>1.03%</i>
8	San Luis Coastal Unified	80.46	572,096.01	0.65%	0.65%
9	<i>COMPARATIVE GROUP</i>	<i>75.39</i>	<i>852,435.06</i>	<i>0.56%</i>	<i>0.55%</i>
10	Calistoga Joint Unified	45.81	37,954.01	0.27%	0.25%
11	Vallecito Union Elementary	12.60	6,789.78	0.10%	0.09%
12	Hope Elementary	0.00	0.00	0.00%	0.00%
13	Mendocino Unified	-11.96	-6,000.00	-0.07%	-0.07%

UNRESTRICTED OTHER OUTGO EXPENSE FOR 2015-16

1	Bret Harte Union High	94.15	60,417.11	0.76%	0.74%
2	<i>ALL HIGH SCHOOL DISTRICTS</i>	<i>83.35</i>	<i>40,794,955.97</i>	<i>0.94%</i>	<i>0.92%</i>
3	San Luis Coastal Unified	6.03	42,872.16	0.06%	0.06%
4	Shoreline Unified	0.00	0.00	0.00%	0.00%
5	Hope Elementary	0.00	0.00	0.00%	0.00%
6	<i>ALL ELEMENTARY SCHOOL DISTRI</i>	<i>-4.63</i>	<i>-5,018,850.91</i>	<i>-0.06%</i>	<i>-0.06%</i>
7	Vallecito Union Elementary	-4.64	-2,500.52	-0.05%	-0.05%
8	<i>ALL UNIFIED DISTRICTS</i>	<i>-5.00</i>	<i>-19,410,152.47</i>	<i>-0.06%</i>	<i>-0.06%</i>
9	<i>COMPARATIVE GROUP</i>	<i>-5.74</i>	<i>-64,877.52</i>	<i>-0.06%</i>	<i>-0.05%</i>
10	Cayucos Elementary	-40.48	-8,088.33	-0.33%	-0.31%
11	Mendocino Unified	-71.74	-36,000.00	-0.57%	-0.56%
12	<i>Coast Unified</i>	<i>-91.14</i>	<i>-60,290.00</i>	<i>-0.62%</i>	<i>-0.61%</i>
13	Calistoga Joint Unified	-146.74	-121,577.94	-1.09%	-0.96%

Due to inconsistencies in reporting charter school ADA and financial information, statewide average amounts per ADA may be impacted.

TOTAL EXPENDITURES OF THE DISTRICT FOR 2015-16

RANK	DISTRICT	Total Expense per ADA	Total Expense Dollars	Total Expense, Transfers & Other Uses per ADA	Total Expense, Transfers & Other Uses Dollars
1	Shoreline Unified	24,984.08	12,821,329.01	25,449.80	13,060,329.01
2	Coast Unified	18,423.96	12,188,000.52	18,745.04	12,400,405.77
3	Calistoga Joint Unified	16,840.88	13,953,339.67	18,611.89	15,420,696.68
4	Mendocino Unified	16,432.31	8,246,059.51	16,662.69	8,361,670.22
5	Bret Harte Union High	15,997.56	10,266,114.30	16,309.22	10,466,114.30
6	Cayucos Elementary	15,219.69	3,041,046.36	15,822.87	3,161,567.21
7	COMPARATIVE GROUP	13,529.67	152,984,443.74	13,824.85	156,322,131.62
8	Vallecito Union Elementary	12,898.12	6,950,540.84	13,265.18	7,148,342.84
9	San Luis Coastal Unified	12,291.17	87,392,157.11	12,428.29	88,367,157.11
10	ALL HIGH SCHOOL DISTRICTS	11,961.45	5,854,439,554.61	12,241.41	5,991,465,055.87
11	ALL UNIFIED DISTRICTS	11,312.28	43,885,061,529.02	11,530.09	44,730,045,685.85
12	ALL ELEMENTARY SCHOOL DISTRI	10,659.87	11,548,034,305.15	10,954.93	11,867,685,433.24
13	Hope Elementary	10,597.77	10,313,856.94	10,620.79	10,336,254.25

TOTAL UNRESTRICTED EXPENDITURES OF THE DISTRICT EXPENSE FOR 2015-16

1	Shoreline Unified	18,324.10	9,403,562.97	18,743.06	9,618,562.97
2	Coast Unified	14,622.29	9,673,084.56	14,943.37	9,885,489.81
3	Calistoga Joint Unified	13,518.72	11,200,800.59	15,289.74	12,668,157.60
4	Mendocino Unified	12,492.66	6,269,064.45	12,723.04	6,384,675.16
5	Bret Harte Union High	12,416.54	7,968,069.22	12,728.20	8,168,069.22
6	Cayucos Elementary	12,317.53	2,461,165.27	12,920.71	2,581,686.12
7	COMPARATIVE GROUP	10,271.78	116,146,462.59	10,564.84	119,460,150.47
8	San Luis Coastal Unified	9,392.91	66,785,110.41	9,530.04	67,760,110.41
9	ALL HIGH SCHOOL DISTRICTS	8,873.31	4,342,973,814.42	9,108.94	4,458,302,352.89
10	Vallecito Union Elementary	8,663.75	4,668,723.41	9,030.81	4,866,525.41
11	ALL UNIFIED DISTRICTS	7,989.29	30,993,812,109.79	8,188.72	31,767,471,900.04
12	ALL ELEMENTARY SCHOOL DISTRI	7,784.61	8,433,209,994.93	8,056.54	8,727,797,863.94
13	Hope Elementary	7,593.39	7,389,966.27	7,616.41	7,412,363.58

Due to inconsistencies in reporting charter school ADA and financial information, statewide average amounts per ADA may be impacted.

TOTAL NET ENDING BALANCE FOR 2015-16

RANK	DISTRICT	Net Ending Balance per ADA	% of Total Expense	% of Total Expense, Transfers & Other Uses	Net Ending Balance
1	Shoreline Unified	10,018.11	40.10%	39.36%	5,141,093.73
2	Vallecito Union Elementary	5,370.43	41.64%	40.49%	2,894,017.21
3	Mendocino Unified	5,134.94	31.25%	30.82%	2,576,814.37
4	Cayucos Elementary	4,794.32	31.50%	30.30%	957,953.65
5	Coast Unified	3,221.78	17.49%	17.19%	2,131,306.79
6	Calistoga Joint Unified	2,897.79	17.21%	15.57%	2,400,938.65
7	COMPARATIVE GROUP	2,891.74	21.37%	20.92%	32,697,868.59
8	ALL ELEMENTARY SCHOOL DISTRICTS	2,529.81	23.73%	23.09%	2,740,586,504.33
9	San Luis Coastal Unified	2,503.96	20.37%	20.15%	17,803,570.40
10	ALL UNIFIED DISTRICTS	2,178.29	19.26%	18.89%	8,450,500,511.80
11	ALL HIGH SCHOOL DISTRICTS	2,144.40	17.93%	17.52%	1,049,558,869.13
12	Bret Harte Union High	1,632.34	10.20%	10.01%	1,047,522.47
13	Hope Elementary	-127.46	-1.20%	-1.20%	-124,041.89

UNRESTRICTED NET ENDING BALANCE FOR 2015-16

1	Shoreline Unified	9,204.91	50.23%	49.11%	4,723,773.75
2	Vallecito Union Elementary	5,223.62	60.29%	57.84%	2,814,906.77
3	Mendocino Unified	4,909.22	39.30%	38.59%	2,463,543.06
4	Cayucos Elementary	4,442.02	36.06%	34.38%	887,560.42
5	COMPARATIVE GROUP	2,575.08	25.07%	24.37%	29,117,288.37
6	Coast Unified	2,476.67	16.94%	16.57%	1,638,391.68
7	San Luis Coastal Unified	2,292.47	24.41%	24.06%	16,299,841.11
8	ALL ELEMENTARY SCHOOL DISTRICTS	2,145.59	27.56%	26.63%	2,324,363,393.37
9	ALL HIGH SCHOOL DISTRICTS	1,827.50	20.60%	20.06%	894,454,920.80
10	Calistoga Joint Unified	1,812.80	13.41%	11.86%	1,501,973.68
11	ALL UNIFIED DISTRICTS	1,785.61	22.35%	21.81%	6,927,141,530.17
12	Bret Harte Union High	1,262.98	10.17%	9.92%	810,491.69
13	Hope Elementary	-395.39	-5.21%	-5.19%	-384,802.11

Due to inconsistencies in reporting charter school ADA and financial information, statewide average amounts per ADA may be impacted.