

Oak Hills

Student Neighborhood Access Program

2018 -2019

1. OAK HILLS TRAFFIC SAFETY COMMITTEE:

- A. Principal: Mike Page
- B. Administrative Intern: Casey Pickett
- C. PTA Rep: Terra Lechtenberg
- D. PTA Safety Commissioner: Shelly McBride
- E. Community Council Chair: Terry Miller
- F. JSSC Rep: Jerilee Jones
- G. City Representative: Brett Scoffield

2. SCHOOL PLAN 2.1 Written Plan

2.1 Location: 1235 East 600 South, Bountiful, UT 84010. Oak Hills Elementary is located directly east of the "downtown" area of Bountiful, Two miles east of I-15. The Oak Hills neighborhood is totally residential except for the Lakeview Hospital and Bountiful High School areas. Except for home based, there are no other businesses in the area. The Bountiful LDS Temple lies about four blocks east of the school.

2.2 Existing Traffic Controls:

2.2.1 Intersection of 3rd South and 1235 East directly north of the school playground: crossing guard, flashing lights, painted crosswalk.

2.2.2 Intersection of 6th South/13th East/Moss Hill/Canyon Crest/ Lakeview Drive (closest crossing to the school): Crossing Guard, pedestrian warning signs, painted crosswalk.

2.2.3 Regular stop signs and yield signs as noted on area map.

2.2.4 Intersection of Davis Blvd. and 500 South: Students to cross on south side of 500 South.

2.3 Established School Crossing: (As above)

2.4 Established Speed School Zones: 3rd South and 1235 East intersection, and 6th South/13th East/Moss Hill/ Canyon Crest/Lakeview Drive intersection.

2.5 Established Narrow School Routes: None

2.6 Present Access Routes and the approximate numbers of students using them. (See Map)

2.7 Sidewalks: Not all streets have sidewalks, and not all streets are cleared of snow in bad weather.

2.8 Hazards:

2.8.1 The area is quite hilly. Curving and hilly streets result in some blind curves.

2.8.2 Only special education students are bused. The majority of students are driven by parents or in car pools; the percentage is as high as 95% if the weather is bad. Fewer than 30% of the students walk on a regular basis.

2.8.3 Many parents use the LDS Church parking lot just northwest of the school for student drop-off and pick-up. This seems to be an acceptable situation and certainly relieves the congestion in front of the school.

2.8.4 Kindergarten students who are not picked up immediately are instructed to come in to the school foyer or office to wait for parents.

2.8.5 On the northeast corner of the school there is a natural slope and during inclement weather it is slippery.

2.9 Bicycle Routes: Bicycle routes are essentially the same as walking routes. Students riding bicycles are instructed to ride to the far right of the street to give vehicles the right of way. In good weather, perhaps 20 students per day ride bicycles, skate boards, or scooters.

2.10 Future Growth Areas: The only possible growth area lies to the east of Bountiful Boulevard.

2.11 Bus Loading and Unloading Areas: There is a semi-circle bus unloading area in front of the school accessed from 600 South.

2.12 Other Vehicle Loading/Unloading Areas: Private vehicles can use the area described in 2.11, or the parking lot.

3. Dissemination of Plan and Training:

3.1 Following plan approval, copies will be made available to each parent through newsletter information, PTA, Community Council, and the school web site.

3.2 Students will be trained regarding the routing plan, crossing safety, and bike safety in conjunction with the PTA Safety Week programs. Parents will be trained on parking at Back-To-School Night and parent nights.

3.3 Maps: (On file with Davis District Planning Office).

3.3.1 Map 1 - Access Routes for Students

3.3.2 Map 3 - Loading/Unloading Areas.

4. Issues and Recommendations:

4.1 Issue: Many drivers are very casual and often noncompliant, even right in front of the school. This is a dangerous intersection.

4.2 Issue: Lack of sidewalks in some areas. Bountiful City has completed additional sidewalks and warning signage at the intersection of 5th South and Davis Boulevard.

4.3 Issue: Parents who do not yield to buses.

4.4 Issue: Too many car pools and other vehicle pickups.


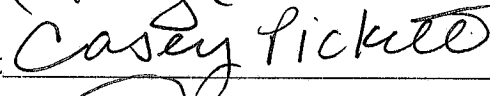

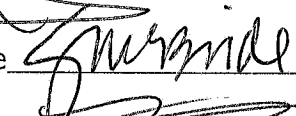


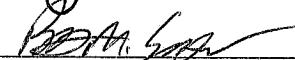
4.5 Issue: Students must walk in streets when walks aren't cleared after snow.

4.6 Recommendation: Encourage continued enforcement of "no parking" rules for red and yellow painted areas in front of school, and west of the school.

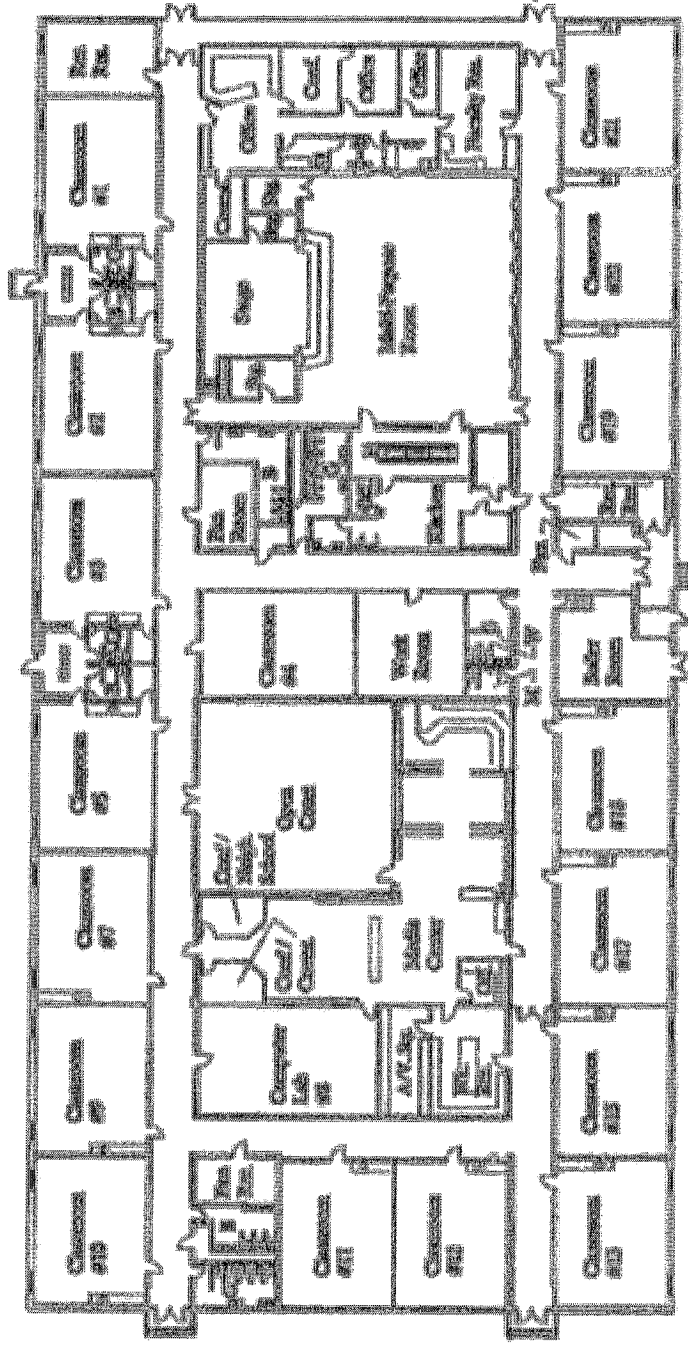
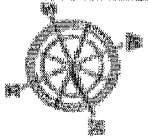
4.7 Recommendation: Encourage enforcement of snow removal statutes.

4.8 Recommendation: A crosswalk painted on 3rd South and 13th East (East and West).

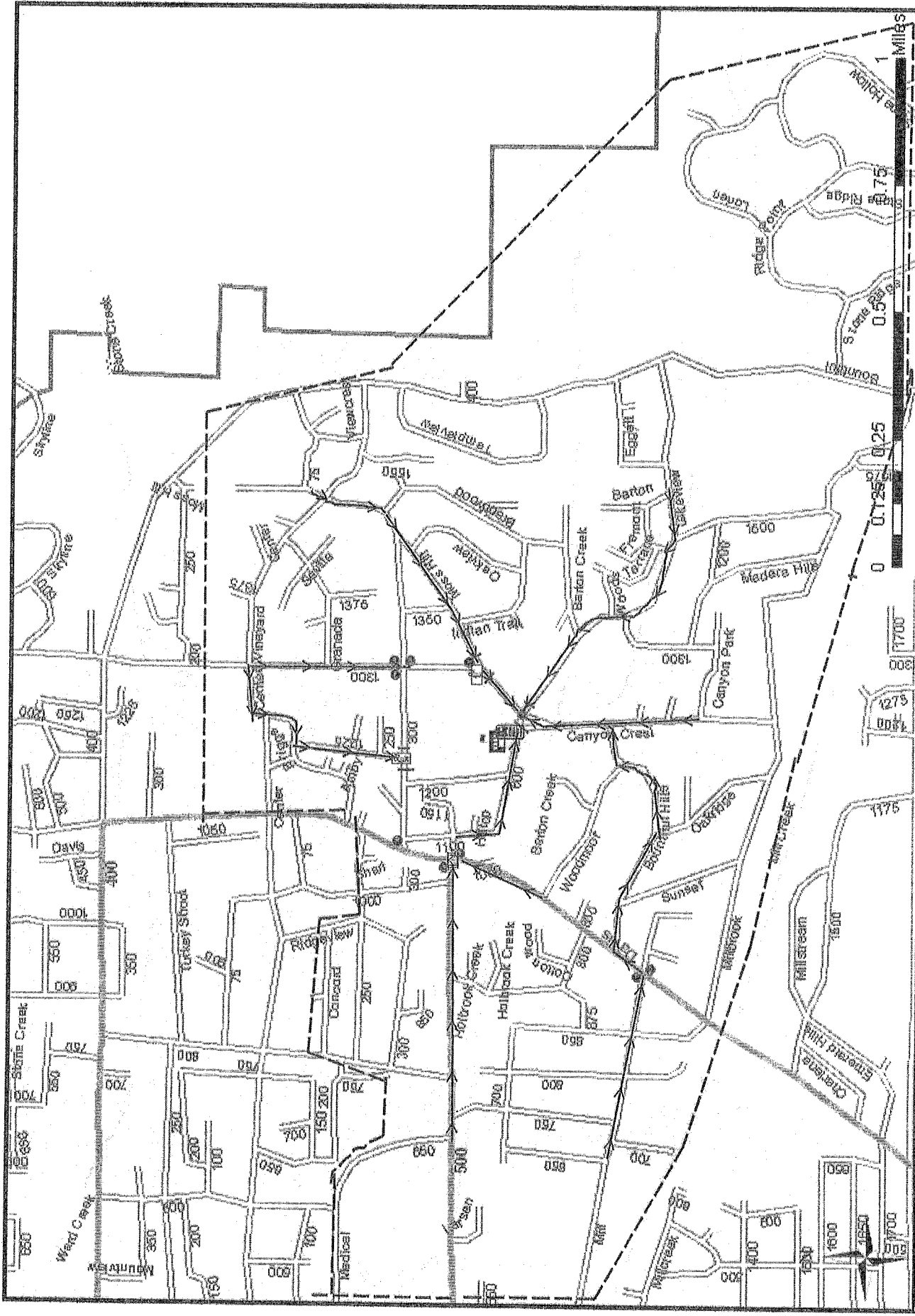
5. * The following people approve of the Student Neighborhood Access program given the existing conditions:

- A. Principal: Mike Page 
- B. Administrative Intern: Casey Pickett 
- C. PTA Rep: Terra Lechtenberg 
- D. PTA Safety Commissioner: Shelly McBride 
- E. Community Council Chair: Terry Miller 
- F. JSSC Rep: Jerilee Jones 
- G. City Representative: Brett Scoffield 

Open lock and unlock doors at the
lock transition



- Portable Classroom 4000
- Portable Classroom 4001
- Portable Classroom 4002



- ### Oak Hills Elementary School
- | | | | |
|--|---------------------------|--|--------------------------|
| | School Crossing Zone | | School Bus Loading Zone |
| | Preferred Route | | Traffic Signal |
| | School Boundary | | Stop Sign |
| | Hazardous Zone | | Yield Sign |
| | Railroad | | Pedestrian Crossing |
| | Adult Crossing Guard | | Dangerous Point |
| | Reduced Speed School Zone | | Narrow School Route |
| | Abutting School Zone | | Missing/Damaged Sidewalk |