

# SLOUGH & ETON

CHURCH OF ENGLAND BUSINESS & ENTERPRISE COLLEGE

# WELCOME TO SLOUGH & ETON CHURCH OF ENGLAND BUSINESS & ENTERPRISE COLLEGE

---

Slough and Eton builds on the tradition of our foundation as a Church of England School which welcomes all faiths and cultures. The Christian ethos permeates across all our work and we celebrate unity in diversity. Our students are from a variety of religions, faiths and countries. They work, play and flourish together developing respect and understanding for each other so that they are well prepared for their adult lives. All visitors to the school comment on the warmth of welcome, harmonious atmosphere around the school and the focused attitude of students.



We are a highly successful, 11-19 co-educational school with a Business and Enterprise Specialism.

The recent building developments have helped to make us a flagship school for the 21st century. We have grown in size and popularity over the last few years, a reflection of our high standing in the community and our outstanding achievements. Currently we have over 1100 students and nearly 200 teaching and support staff.

This means that whilst we are small enough to retain a friendly atmosphere and know everyone's face, the school is large enough to offer a full range of academic and vocational subjects taught by specialist teachers.

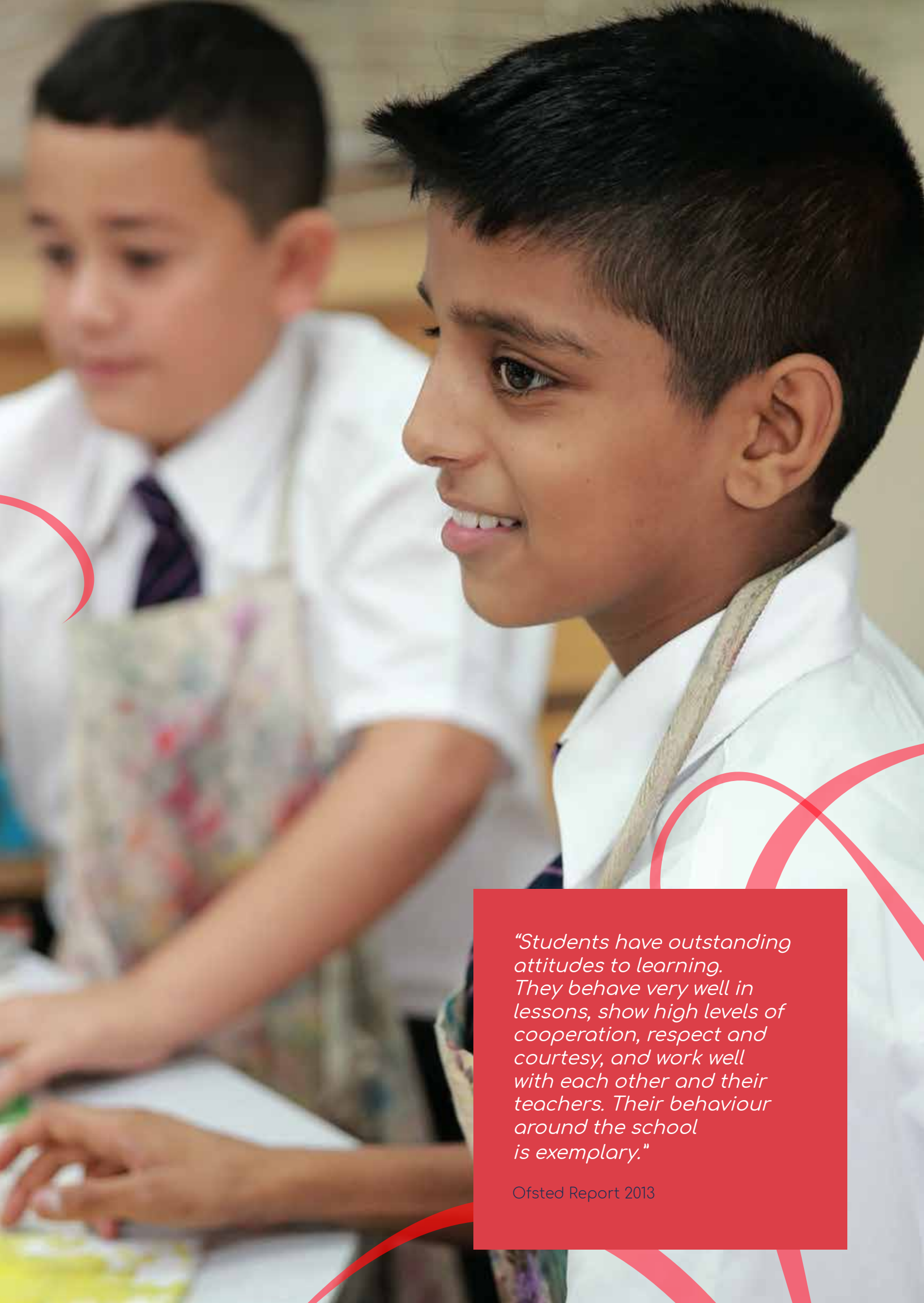
The school also has a very successful Sixth Form with over 250 students taking Advanced Level and BTEC courses.

Academically we establish good working habits in an environment that is wholly conducive to learning and study.

Although we take great pride in our high achievers, we are particularly proud that ALL of our students leave with sound qualifications on which to build their future. We believe that working collaboratively with other schools and organisations helps children to be more successful. We are a lead school in the Slough and East Berkshire Multi Academy Trust (SEBMAT).

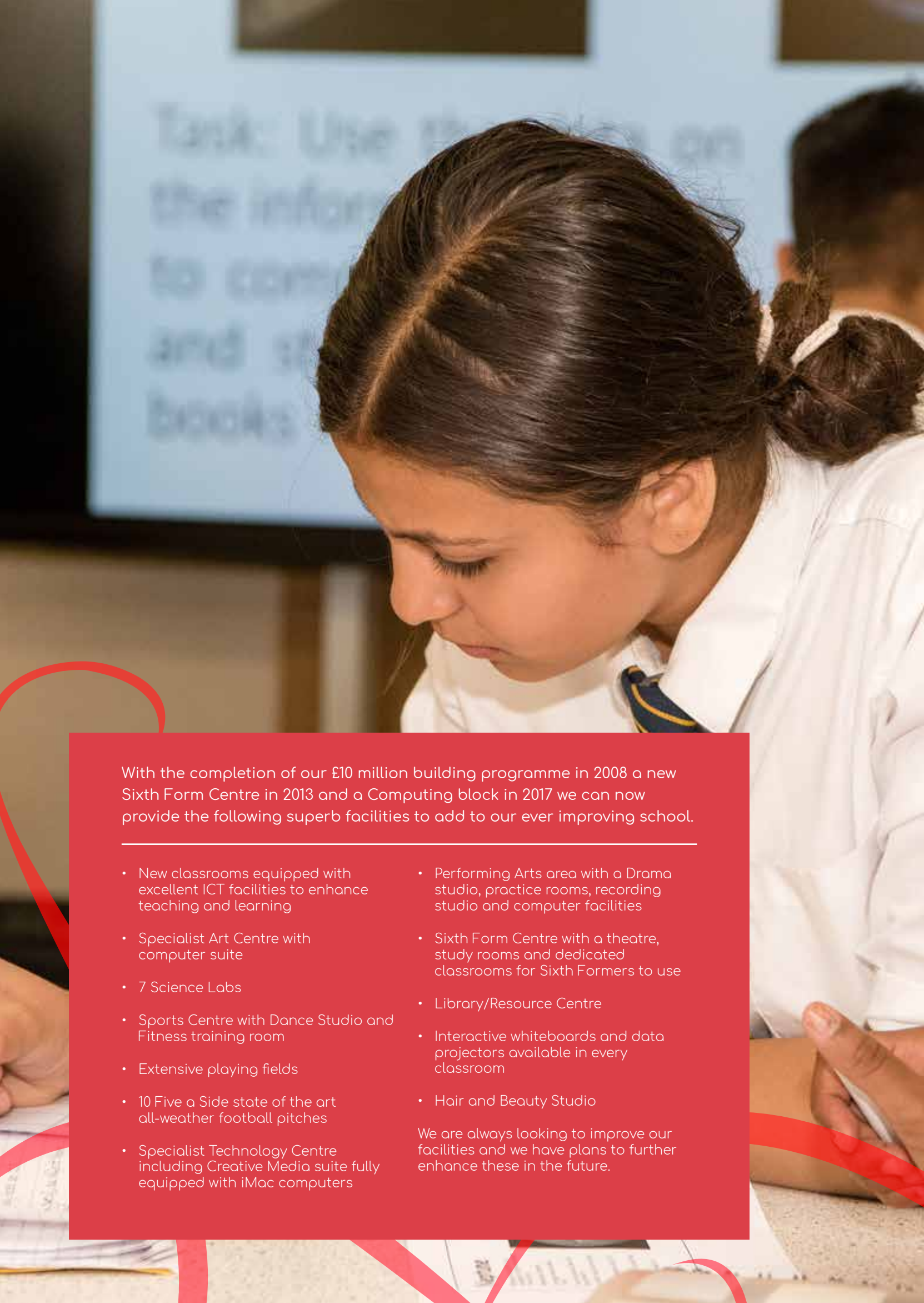
If you would like to visit the school during the working day we offer tours every Thursday at 9.15am, please contact us on **01753 520824** or [reception@slougheton.com](mailto:reception@slougheton.com), to book a place on one.

**Mr Peter Collins**  
Headteacher



*"Students have outstanding attitudes to learning. They behave very well in lessons, show high levels of cooperation, respect and courtesy, and work well with each other and their teachers. Their behaviour around the school is exemplary."*

Ofsted Report 2013



With the completion of our £10 million building programme in 2008 a new Sixth Form Centre in 2013 and a Computing block in 2017 we can now provide the following superb facilities to add to our ever improving school.

- New classrooms equipped with excellent ICT facilities to enhance teaching and learning
- Specialist Art Centre with computer suite
- 7 Science Labs
- Sports Centre with Dance Studio and Fitness training room
- Extensive playing fields
- 10 Five a Side state of the art all-weather football pitches
- Specialist Technology Centre including Creative Media suite fully equipped with iMac computers
- Performing Arts area with a Drama studio, practice rooms, recording studio and computer facilities
- Sixth Form Centre with a theatre, study rooms and dedicated classrooms for Sixth Formers to use
- Library/Resource Centre
- Interactive whiteboards and data projectors available in every classroom
- Hair and Beauty Studio

We are always looking to improve our facilities and we have plans to further enhance these in the future.

# OUR VISION

---

Slough and Eton is a great school. At our heart is great teaching, great learning, great experiences and great outcomes in the context of the Christian ethos of our school.

We educate to prepare students for life in all its fullness and work hard to have happy staff and engaged students. Our mantra, for all members of our school community is clear and unambiguous: **Work Hard, Be Nice, No Excuses**. Our expectations of students are high both in terms of conduct and engagement with learning. We believe passionately that the needs of each individual require the closest of attention and that strong relationships between adults and students are vital for success.

The curriculum at our school is rich, varied and engaging. We believe that the development of our students' cultural awareness is fundamental to their success as learners and young adults. To foster this we ensure a wide range of extra and super-curricular activities which develop essential leadership and life skills.

## Our Vision for Success:

In achieving our vision for success at school we have the following ambitions for our students:

- To be happy and resilient young people who value their education;
- To always be punctual and rarely miss a day of school;
- To achieve the best possible outcomes regardless of previous achievement;
- To be inspired by their experiences, develop strong leadership skills and be motivated to work hard;
- To have a broad outlook on their future prospects which leads them towards appropriate yet ambitious career pathways;
- To know what they are good at and how to improve their skills;
- To learn and socialise in a clean, tidy, fresh forward-thinking and modern-feeling school;
- To feel a strong sense of pride and respect for their school community;
- To value and appreciate the differences and cultures of others and enjoy the richness of life.

For everyone to succeed at Slough and Eton we are relentlessly focused on these standards:

- High quality teaching is the ultimate key to ensuring all students achieve the best possible outcomes;
- Teachers ensure students display excellent attitudes to learning. Everyone will challenge off task behaviour and passive learning;
- All lessons should make maximum use of time, be challenging and engaging for all students;
- Disadvantage will not be a barrier to a student's success;
- All members of staff are responsible for improving their practice, being reflective and proactive in their professional development;
- Students are entitled to high quality feedback from their teacher to help them improve;
- Meaningful assessment is key to addressing underachievement and informing targeted interventions;
- A culture of safeguarding which protects the interests of all will permeate throughout the school;
- Working in partnership with parents is fundamental to ensuring our students are supported successfully.

# THE SLOUGH AND ETON LEARNER

We are proud of our Church of England heritage and welcome students and staff from all faiths and none into our community. Christian beliefs are firmly rooted in our foundations and support all that we do.

**Cross:** the cross on our shield reminds us to treat others as Jesus did: to 'love your neighbour as yourself' (Matthew 22:39)

**Rose:** the rose on our shield focuses us on our core belief that all of us have value and, like a rose blooms, we will work to ensure that everyone flourishes: 'And the desert shall rejoice and blossom as the rose' (Isaiah 35:1)

The Bible reminds us of how we can all live and work by our core mantra of **Work Hard, Be Nice, No Excuses** and we are proud to use this as the foundation upon which we will build our success.

## Work Hard

The Bible tells us:

*'Whatever you do, work at it with all your heart, as if for God and not for men.'*

Colossians 3:23

## Be Nice

The Bible tells us:

*'Love your neighbour as yourself.'*

Matthew 22:39

## No Excuses

The Bible tells us:

*'You, therefore, have no excuse'*

Romans 2:1

At Slough and Eton we see all our students as God's children and we wish for them to develop the characteristics exemplified by Christ as successful learners. CHRIST guides the Slough and Eton Learner to 'work hard', 'be nice' and have 'no excuses' and develop a CHRIST-like character:

**C**ommunication: Jesus drew large crowds to hear his teachings; he told stories that are relevant today, and spoke sayings that are part of common parlance. He was a skilled communicator.

**H**onesty: Even when Jesus was put on trial before being crucified he did not lie. He opted to 'speak the truth in love'.

**R**esponsibility: Jesus noticed and did something about people who had less than others. He fed the 5,000, healed the sick, and was trusted by so many people that they left their everyday normal and chose to follow him.

**I**nitiative: Jesus was creative in the way he led his team of disciples, and in the decisions he took. He led people into living in a radically different way and was prepared to take risks in doing this.

**S**uccess: 2,000 years later and the religion that developed out of Jesus' teachings is followed by 2/3 world's population. His values and teachings are considered transformative which is remarkable for a man who didn't travel more than 100 miles from his home town.

**T**olerance: In a society where people who were different were treated as outcasts, Jesus triumphed the cause of the downtrodden. He epitomises someone who treats everyone with equality and fairness.

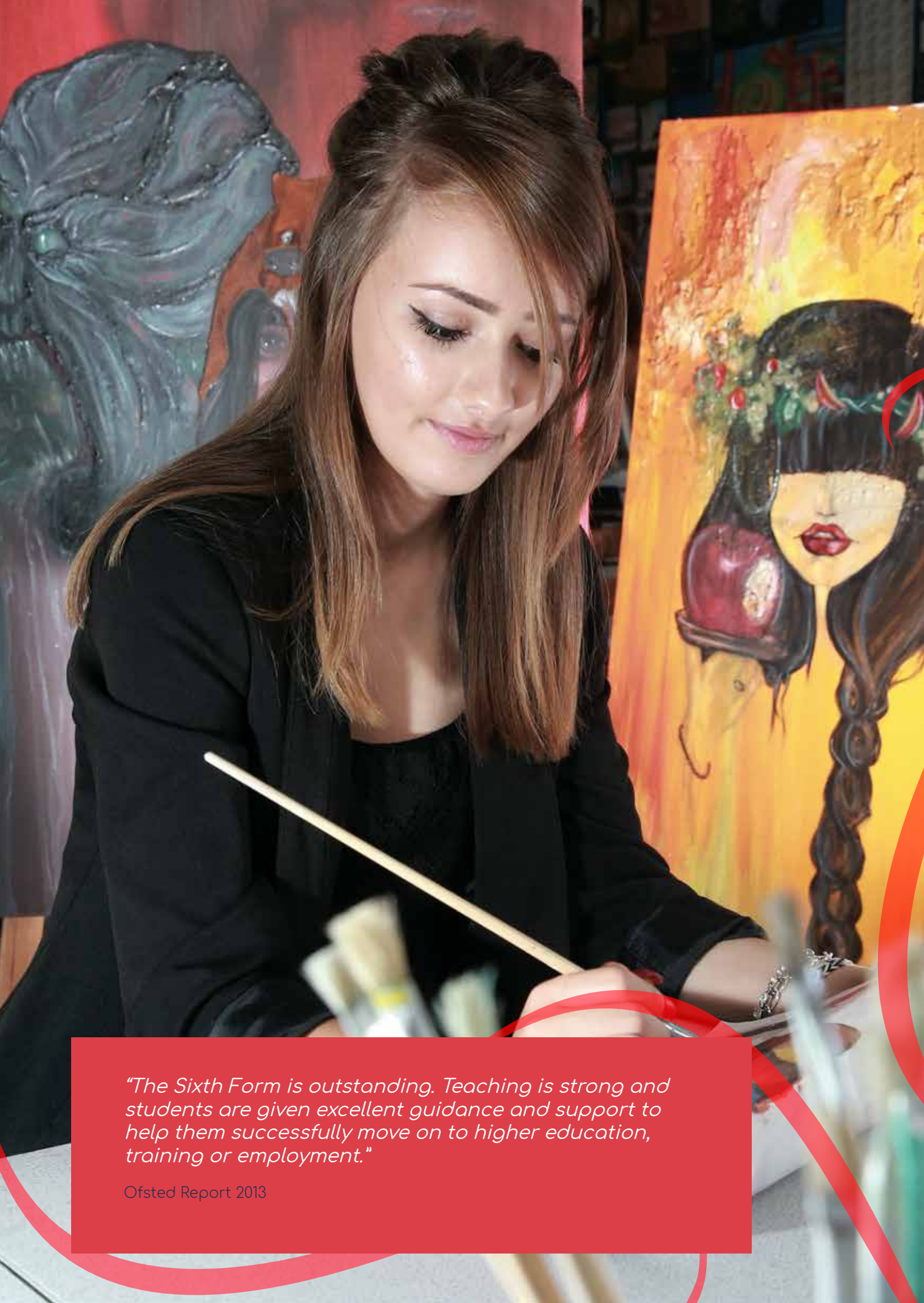
Jesus embodied the characteristics of The Slough and Eton Learner.





*"Teaching is consistently good and frequently outstanding. Teachers have high expectations and challenge students to excel in their learning regardless of their ability. The Headteacher, senior leadership team, governors and staff are determined to build on their success in improving teaching and students' achievement."*

Ofsted Report 2013



*"The Sixth Form is outstanding. Teaching is strong and students are given excellent guidance and support to help them successfully move on to higher education, training or employment."*

Ofsted Report 2013



# STIMULATING SIXTH FORM

---

The Slough and Eton Sixth Form is a successful and happy one where students achieve academic and personal success in a caring and supportive environment.

The Sixth Form has grown to over 250 students who study a wide range of A levels and vocational courses. We believe that our Sixth Form curriculum can meet the needs of our students by allowing them to select courses that will enable them to progress to university, apprenticeships or work.

Our aim is to develop well rounded, well qualified young people who are able to progress to higher education or a fulfilling career. In addition to their studies, students have the opportunity to participate in a wide variety of extra-curricular activities, work related learning and community projects.

The Sixth Form is part of a thriving and high performing school that prides itself on creating stimulating learning opportunities that challenge and encourage students to achieve their full potential.

## BUSINESS ENTERPRISE SPECIALIST STATUS

---

We are very proud of our Business and Enterprise Specialist Status and firmly believe it is instrumental in raising standards of achievement and enhancing the quality of learning for our students.

To support our specialism we compliment the school day with our extensive range of extra-curricular activities.

We aim to equip our students with economic and business understanding and provide them with a variety of opportunities to follow a wide range of work related pathways.

As a result we are committed to providing each pupil with a rich variety of experiences. The school is open every day until at least 5.00pm with a large number of clubs and activities on offer.

We are committed to ensuring that every pupil can take part in offsite trips and visits each year. Often these are subsidised by the school and include overseas and residential experiences.

*"Students' social, moral, spiritual and cultural development is extremely well supported through a rich curriculum and a variety of extra-curricular activities and educational visits."*

Ofsted Report 2013

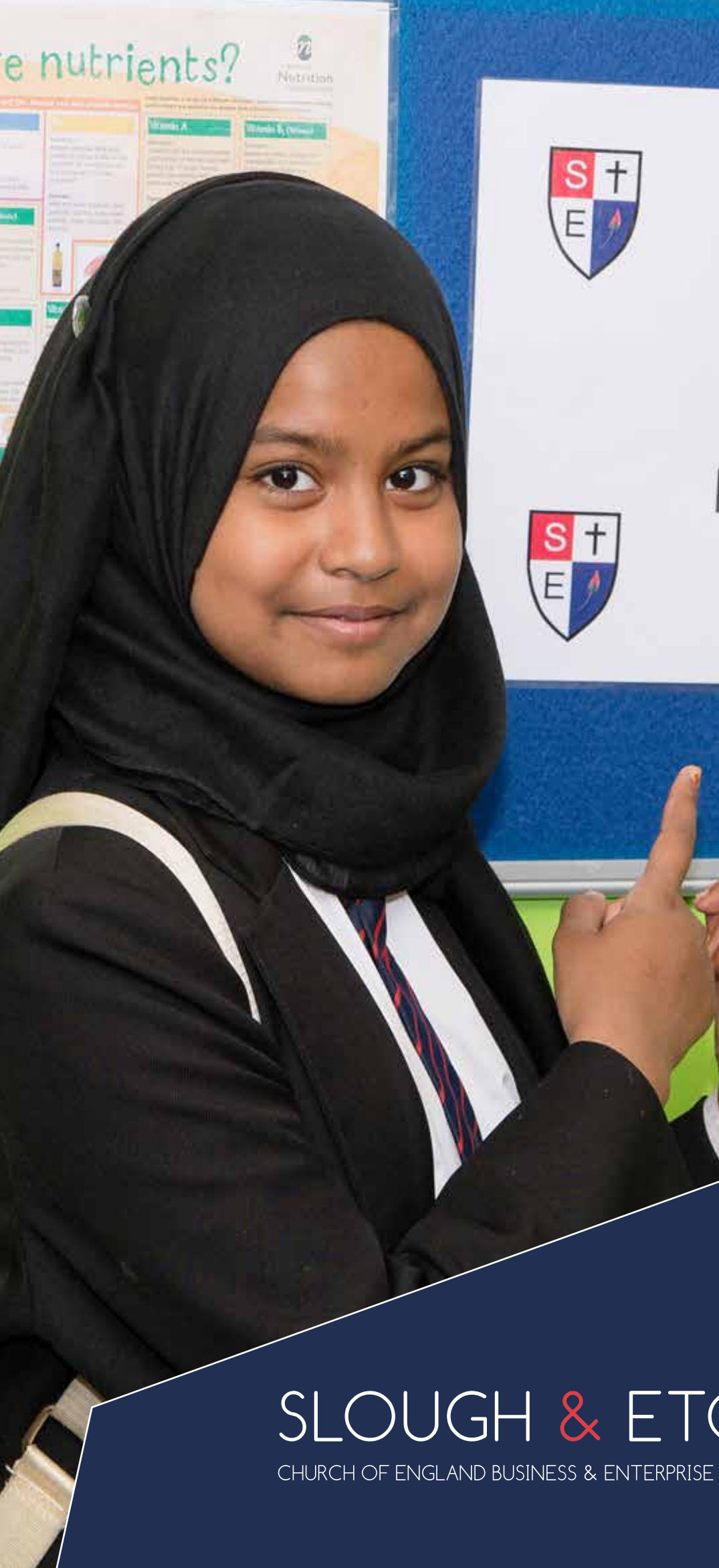
# BEYOND THE CLASSROOM

---

At Slough and Eton we believe that learning does not just happen in the classroom.

Our aim is to provide interesting and memorable alternatives to classroom based learning that will broaden the experiences of our youngsters and enrich their lives. All students are expected to make the most of the opportunities offered.





SLOUGH & ETON

CHURCH OF ENGLAND BUSINESS & ENTERPRISE COLLEGE



# SLOUGH & ETON

CHURCH OF ENGLAND BUSINESS & ENTERPRISE COLLEGE

Ragstone Road, Chalvey, Slough SL1 2PU  
Telephone: 01753 520824 | Fax: 01753 574914  
reception@slougheton.com | www.slougheton.com