



NEW LEBANON ELEMENTARY SCHOOL BUILDING COMMITTEE

Community Update – November 2018

About the School Building Project

This intra-district elementary International Baccalaureate magnet school will serve students in grades PreK-5. The centrally located learning commons, equipped with flexible furnishings & adaptable technological infrastructure, allows for multiple zones of simultaneous learning. The building is designed to meet the sustainability goals established by the Educational Specifications and to achieve a gold-level LEED rating from US Green Building Council.

The following work was accomplished:

- Exterior wall framing and sheathing (envelope) complete
- Exterior masonry complete
- Glass installation complete
- Ductwork, sprinkler piping, domestic water and electrical conduit are all being installed

Work anticipated for the coming weeks:

- Window installation on the 1st floor ongoing
- Ductwork, sprinkler piping, domestic water and electrical conduit
- Interior metal wall framing and MEP rough-in is ongoing
- Concrete Slab Preparation for flooring will begin
- Paving driveway and walkway
- Classroom millwork will begin in a few weeks
- Ceiling grid will begin after millwork
- Flooring installation will follow

The project has received its 3rd reimbursement from the state, \$4,028,041, totaling \$12,242,352 to date.

If you have a concern, please contact the Gilbane Project Manager, Daniel Phillips at (914) 246-4862.

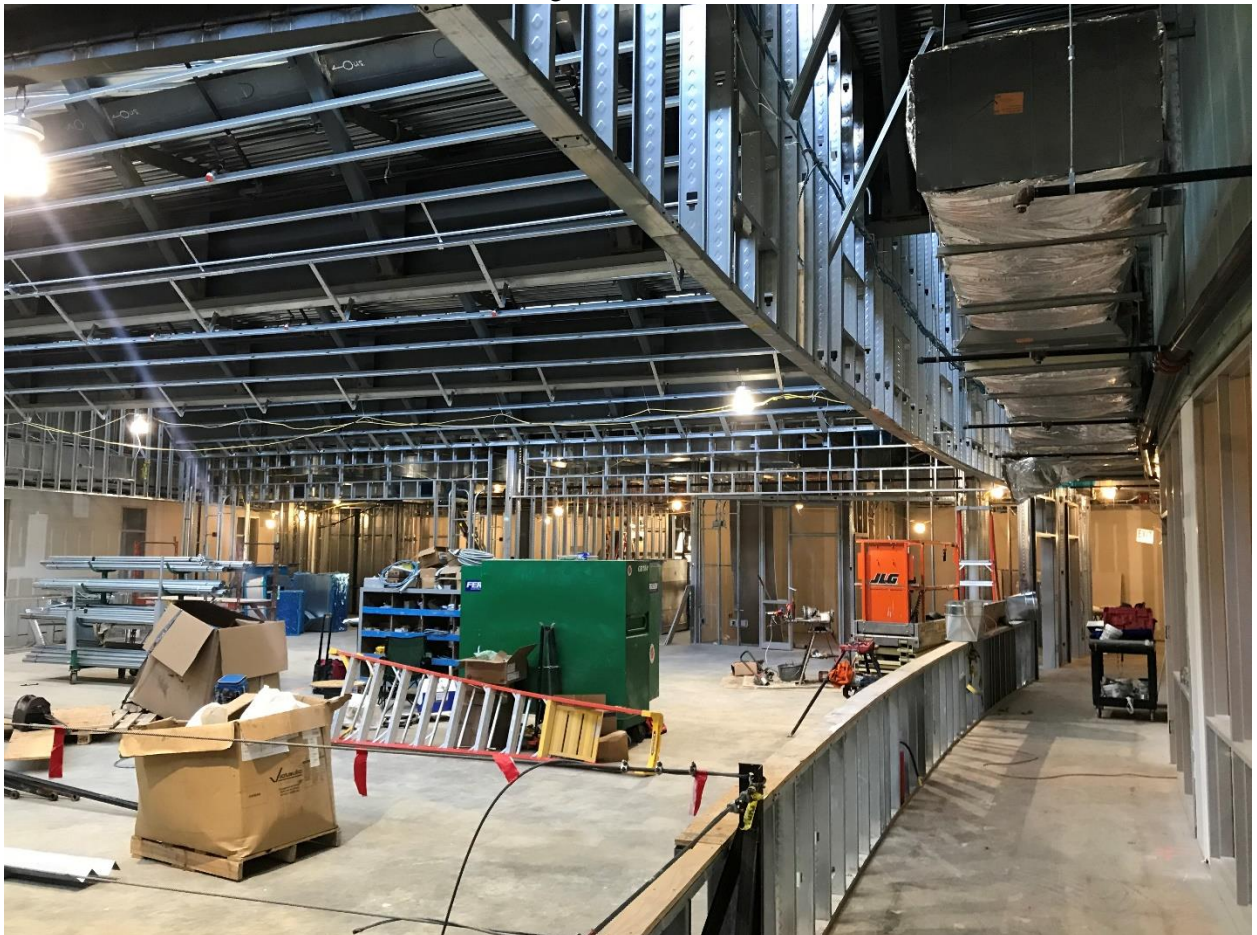
Driveway with Curbing – 10/17/2018



Building South Façade – 10/17/18



Interior framing at Media Center – 9/19/18



Visit our website: www.greenwichschools.org/NLSBC