

# BARBERS HILL ISD

MIDDLE SCHOOL NORTH | MIDDLE SCHOOL SOUTH | HIGH SCHOOL

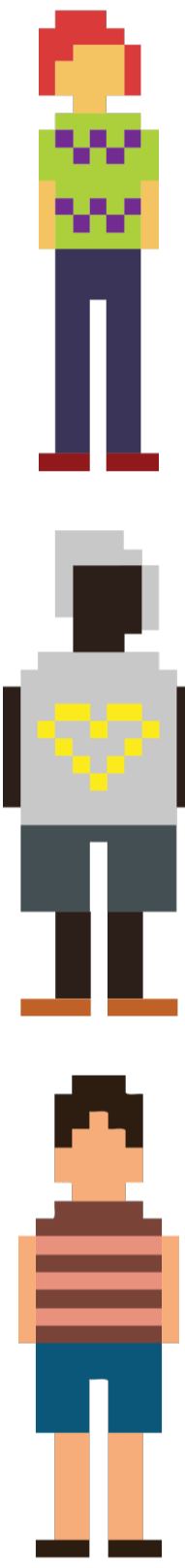


## BREAKFAST ITEMS

MEAL DEAL (ENTRÉE, MILK OR JUICE) .....	\$1.50
KOLACHE.....	\$0.75
BISCUIT AND SAUSAGE.....	\$1.00
BREAKFAST PIZZA.....	\$0.75
DONUT.....	\$0.75
OATMEAL.....	\$0.75
CROISSANT.....	\$2.00
PANCAKES.....	\$1.00
HASHBROWN.....	\$0.50
CEREAL.....	\$0.75
CINNAMON ROLLS.....	\$1.00
HONEY BUN.....	\$1.00
BREAKFAST BURRITO.....	\$1.00
FUNNEL CAKE.....	\$1.00
POP-TARTS.....	\$1.00
MUFFINS.....	\$0.75
FRENCH TOAST STICKS.....	\$0.75

## SNACKS

SMALL FRUIT.....	\$1.75
LARGE FRUIT.....	\$2.25
FRUIT W/DIP.....	\$2.25
LARGE YOGURT PARFAIT.....	\$2.75
SMALL YOGURT PARFAIT.....	\$1.75
MUFFINS.....	\$0.75
SMALL CHIP.....	\$0.60
LARGE CHIP.....	\$0.75
(1) COOKIE.....	\$0.50
(2) COOKIES.....	\$1.00
(3) COOKIES.....	\$1.25
CANDY.....	\$1.25
GOLDFISH.....	\$0.60

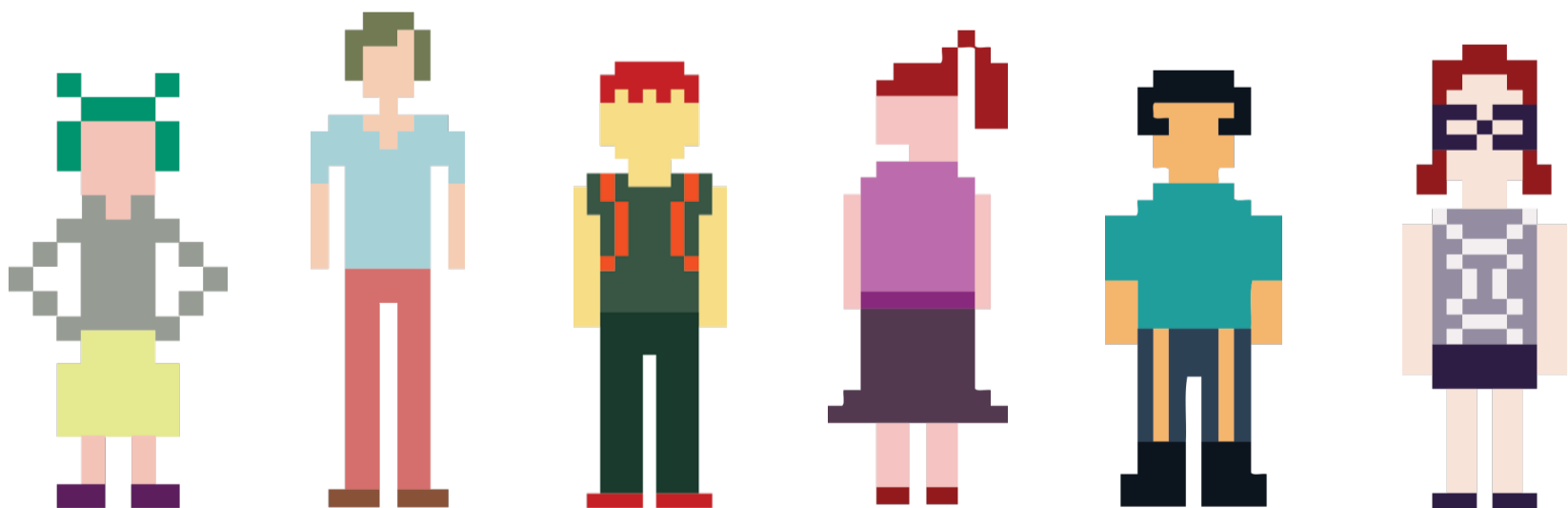


## LUNCH ITEMS

MEAL DEAL (ENTRÉE, SIDE, MILK OR WATER) .....	\$3.10
A LA CARTE ITEMS	
BAKED POTATO.....	\$1.75
BURRITO.....	\$1.50
CHEESEBURGER.....	\$2.00
EGGROLL.....	\$1.25
PIZZA.....	\$2.00
PIZZA STICKS.....	(1) \$1.25 OR (2) \$2.25
SPICY CHICKEN SANDWICH.....	\$2.00
BOUDIN.....	\$2.50
CHICKEN BITES.....	\$2.25
(2) CHICKEN STRIPS.....	\$2.25
MEDIUM CHEF SALAD.....	\$2.75
LARGE CHEF SALAD.....	\$3.50
LARGE FRY.....	\$1.25
SMALL FRY.....	\$0.60
VEGETABLES.....	\$0.50
HOT ROLL/GARLIC BREAD/BREAD STICK.....	\$0.50

## DRINKS

LARGE WATER.....	\$1.00
SMALL WATER.....	\$0.50
LARGE MILK.....	\$1.75
CANNED JUICE DRINKS.....	\$1.25
RED DIAMOND TEA.....	\$1.50
ICE CUP.....	\$0.75
SMALL JUICE.....	\$0.35
SMALL MILK.....	\$0.65
POWERADE.....	\$1.50



In accordance with Federal civil rights law and U.S. Department of Agriculture (USDA) civil rights and regulations and policies, the USDA, its Agencies, offices, and employees, and institutions participating in or administering USDA programs are prohibited from discriminating based on race, color, national origin, sex, disability, age, or reprisal or retaliation for prior civil rights activity in any program or activity conducted or funded by USDA. Persons with disabilities who require alternative means of communication for program information (e.g. Braille, large print, audiotope, American Sign Language, etc.), should contact the Agency (State or local) where they applied for benefits. Individuals who are deaf, hard of hearing or have speech disabilities may contact USDA through the Federal Relay Service at (800) 877-8339. Additionally, program information may be made available in languages other than English. To file a program complaint of discrimination, complete the USDA Program Discrimination Complaint Form, (AD-3027) found online at: [http://www.ascr.usda.gov/complaint\\_filing\\_cust.html](http://www.ascr.usda.gov/complaint_filing_cust.html), and at any USDA office, or write a letter addressed to USDA and provide in the letter all of the information requested in the form. To request a copy of the complaint form, call (866) 632-9992. Submit our completed form or letter to USDA and provide in the letter all of the information requested in the form. To request a copy of the complaint form, call (866) 632-9992. Submit our completed form or letter to USDA by: (1) mail: U.S. Department of Agriculture, Office of the Assistant Secretary for Civil Rights, 1400 Independence Avenue, SW, Washington, D.C. 20250-9410; (2) fax: (202) 690-7442; or (3) email: [program.intake@usda.gov](mailto:program.intake@usda.gov). This institution is an equal opportunity provider.



# 3 WAYS TO PAY FOR MEALS



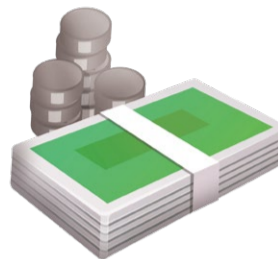
## CREDIT CARD PAYMENTS . . . . .

Visit the district website at [www.bhisd.net](http://www.bhisd.net) and login to Skyward Family Access to pay by credit card. Auto replenish is also available with this option.



## CHECK . . . . .

Make checks payable to BHISD and include your student's name in the memo. Returned checks will result in your student's account being debited for the check amount.



## CASH . . . . .

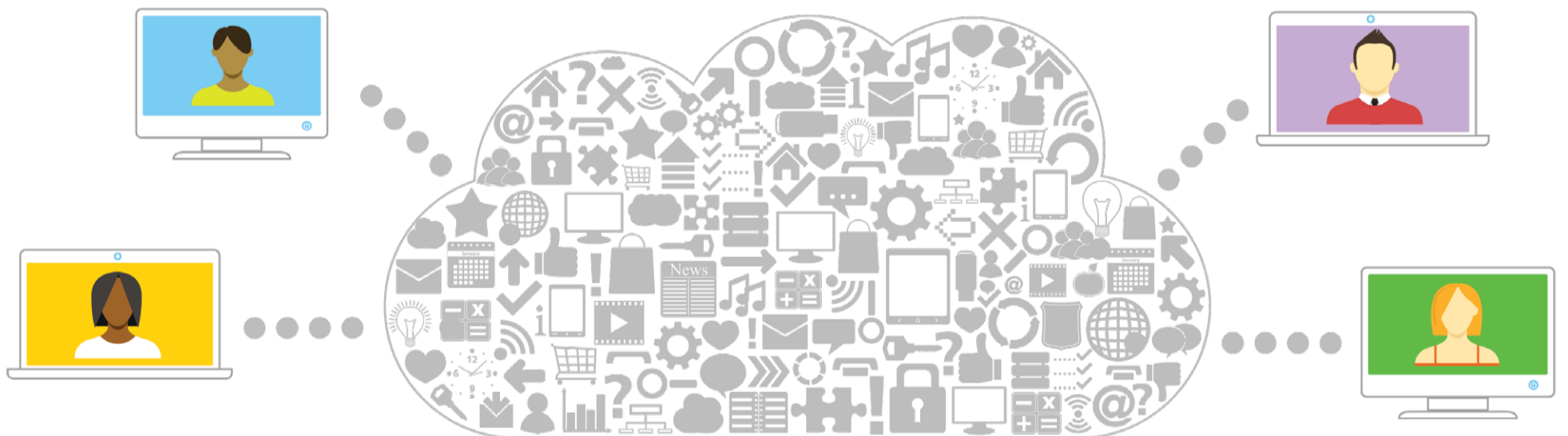
Cash is accepted and can be turned in to the cashier during lunch. Please note we do not give change back to the student for any bills over \$20.00.

**FREE AND REDUCED MEAL APPLICATIONS**

A meal application is available through Skyward Family Access and is also printable off the district website. Paper applications are also available.

# BARBERS HILL ISD

MIDDLE SCHOOL NORTH | MIDDLE SCHOOL SOUTH | HIGH SCHOOL



# BARBERS HILL ISD

MIDDLE SCHOOL NORTH | MIDDLE SCHOOL SOUTH | HIGH SCHOOL

BARBERS HILL INDEPENDENT SCHOOL DISTRICT  
9600 EAGLE DRIVE  
MONT BELVIEU, TX 77523  
281.576.2221