

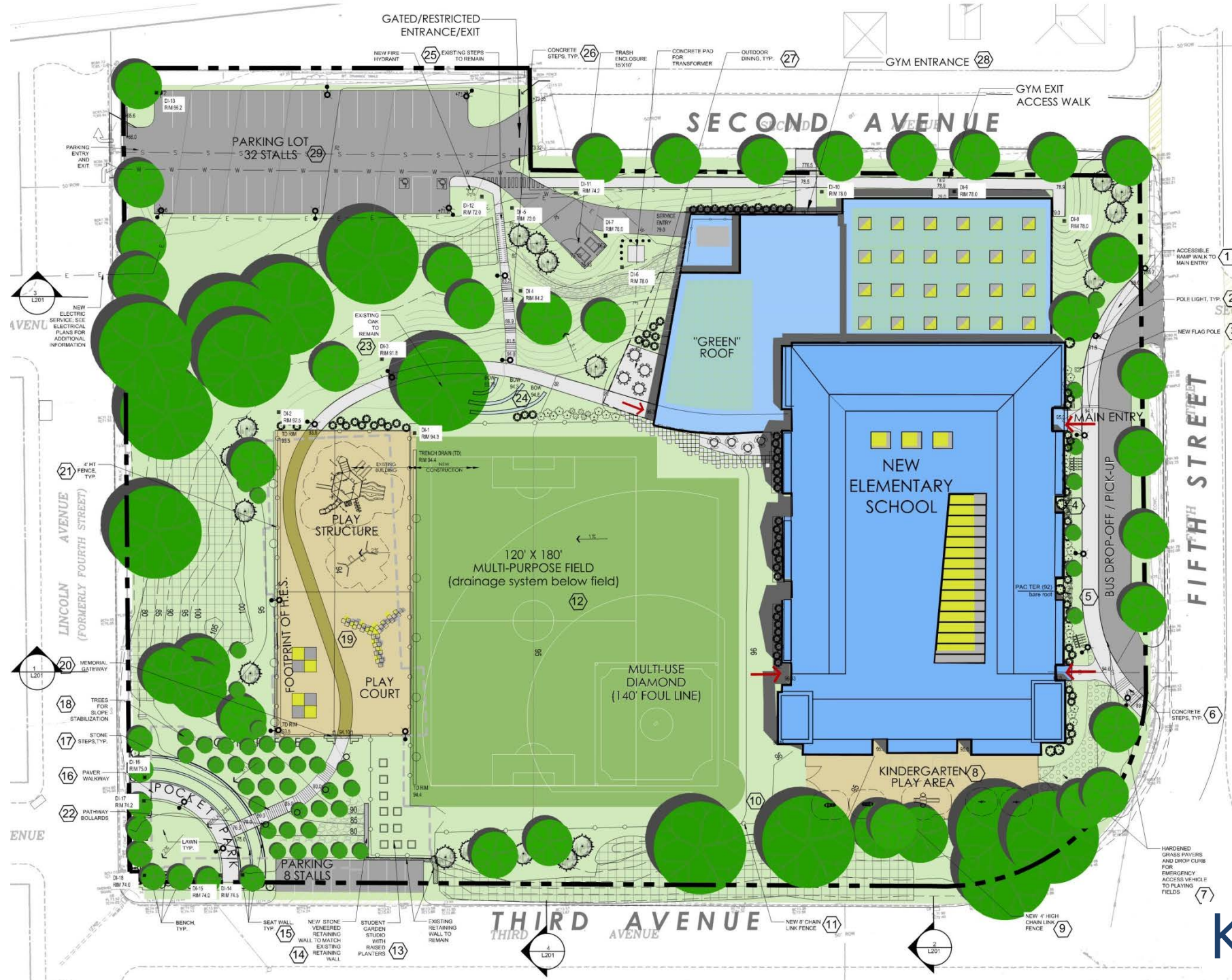


*Board of Education Update*  
*September 25, 2018*

*KG+D ARCHITECTS – WALTER HAUSER, SUE DAVIDSON, SARAH DIRSA*

# AGENDA

- REVIEW OF SCHEMATIC DESIGN DRAWING & RENDERINGS
- BUDGET UPDATE
- SCHEDULE OVERVIEW
- SUSTAINABILITY GOALS & FEATURES





Legend:

- ADMINISTRATION
- ASSEMBLY/PUBLIC USE
- ATRIUM
- CIRCULATION
- CLASSROOM
- SERVICE
- SPECIAL CLASSROOM



1



Legend:

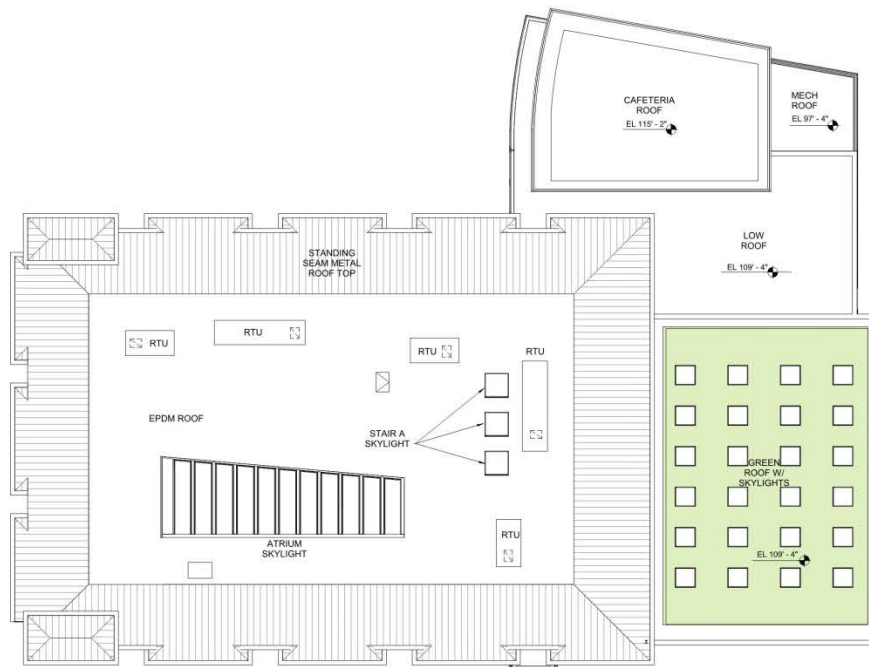
- ADMINISTRATION
- CIRCULATION
- CLASSROOM
- SERVICE
- SPECIAL CLASSROOM



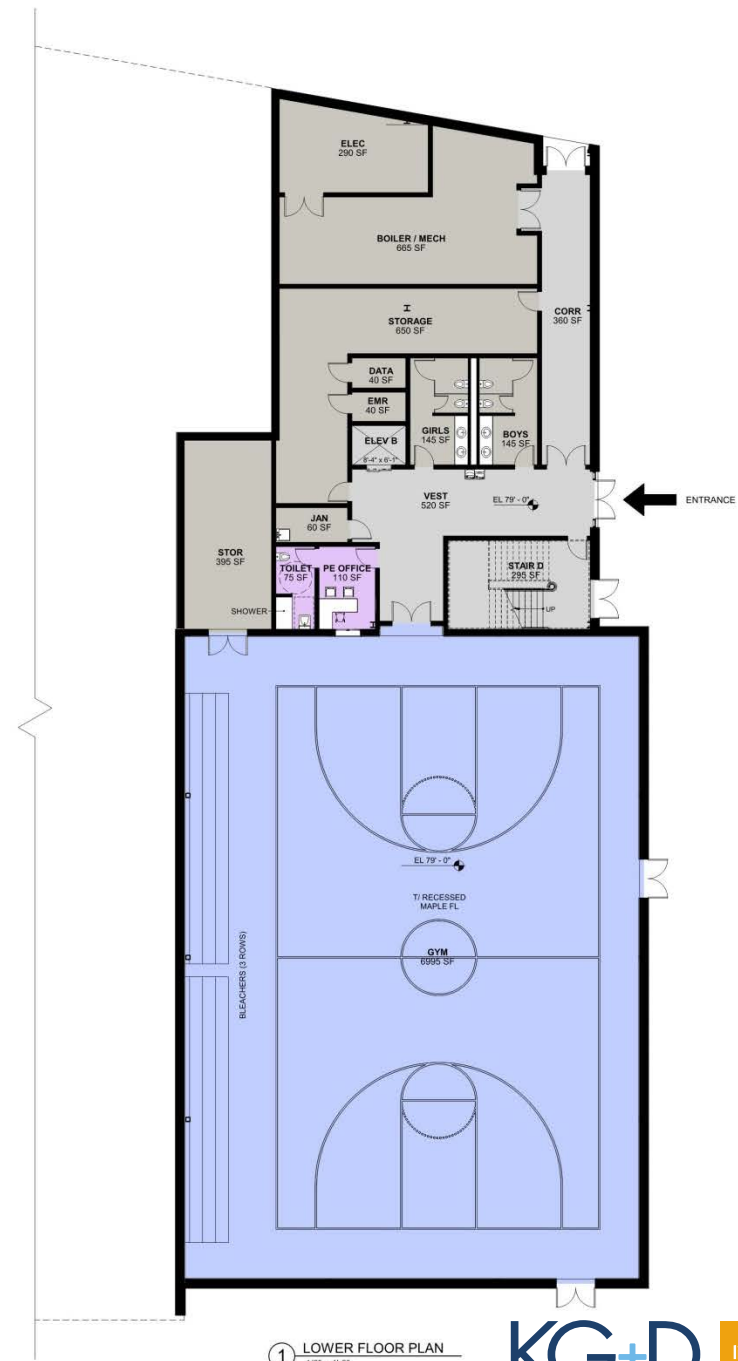
① SECOND FLOOR PLAN  
1/8" = 1'-0"

Legend:

- ADMINISTRATION
- ASSEMBLY/PUBLIC USE
- CIRCULATION
- SERVICE



2 ROOF PLAN  
1/16" = 1'-0"



1 LOWER FLOOR PLAN  
1/8" = 1'-0"









KG+D

listen

imagine

build



























# BUDGET

- THE ESTIMATE IS UPDATED AT EACH PHASE OF DESIGN
- SEPARATE ESTIMATES ARE PREPARED BY **KG+D** & **TRITON**
- KG+D'S SCHEMATIC DESIGN ESTIMATE IS WITHIN AN ACCEPTABLE RANGE OF THE BUDGET (0.5%) FOR THIS PHASE OF WORK
- THE NEXT PHASE OF ESTIMATES WILL BE MORE DETAILED



# SCHEDULE

- THE DESIGN FOR THE NEW HUTCHINSON BUILDING IS PROGRESSING ON-TIME
- SITE PREP: SED SUBMISISON: NOV 2018  
CONSTRUCTION: MAY 2019 – NOV 2019
- BUILDING: SED SUBMISSION: FEB 2019  
CONSTRUCTION: DEC 2019 – DEC 2021

# SUSTAINABILITY

- THE BUILDING IS CURRENTLY DESIGNED WITHIN THE RANGE OF A **LEED CERTIFIED** OR **SILVER** STANDARD
- SUSTAINABLE FEATURES INCLUDE;
  - CONSTRUCTION ACTIVITY POLLUTION PREVENTION
  - LIGHT POLLUTION REDUCTION
  - INDOOR WATER USE REDUCTION & WATER METERING
  - HIGH PERFORMANCE BUILDING ENVELOPE
  - ENERGY RECOVERY VENTILATION
  - LED LIGHTING W/ AUTOMATIC CONTROLS & NATURAL DAYLIGHTING
  - 'GREEN' ROOFING
  - INDOOR AIR QUALITY MANAGEMENT PLAN



# SUSTAINABILITY

- ACHIEVEMENT OF A LEED OR SIMILAR RATING MAY REQUIRE ADDITIONAL CONSTRUCTION AND ADMINISTRATION COSTS
- KG+D WILL PROVIDE ADDITIONAL INFORMATION TO THE BOND STEERING COMMITTEE AND BOARD OVER THE COURSE OF THE NEXT MONTH





KG+D

listen

imagine

build





listen

imagine

build