



NEW LEBANON ELEMENTARY SCHOOL BUILDING COMMITTEE

Community Update – October 2018

About the School Building Project

This intra-district elementary International Baccalaureate magnet school will serve students in grades PreK-5. The centrally located learning commons, equipped with flexible furnishings & adaptable technological infrastructure, allows for multiple zones of simultaneous learning. The building is designed to meet the sustainability goals established by the Educational Specifications and to achieve a gold-level LEED rating from US Green Building Council.

The following work was accomplished:

- Exterior wall framing and sheathing (envelope) complete
- Window installation complete on 2nd floor
- Ductwork, sprinkler piping, domestic water and electrical conduit are all being installed
- Roof Top Mechanical equipment was installed on Saturday, 9.8
- Southern Connecticut Gas has completed the gas main installation to the building
- Furniture Purchase Orders have been issued
-

Work anticipated for the coming weeks:

- Window installation on the 1st floor ongoing
- Ductwork, sprinkler piping, domestic water and electrical conduit
- Exterior masonry ongoing
- Glass is continuing to be installed
- Interior metal wall framing and MEP rough-in is ongoing
- Concrete Slab Preparation for flooring will begin
- Technology Purchase Orders will be issued

The project has received its 3rd reimbursement from the state, \$4,028,041, totaling \$12,242,352 to date.

If you have a concern, please contact the Gilbane Project Manager, Daniel Phillips at (914) 246-4862.

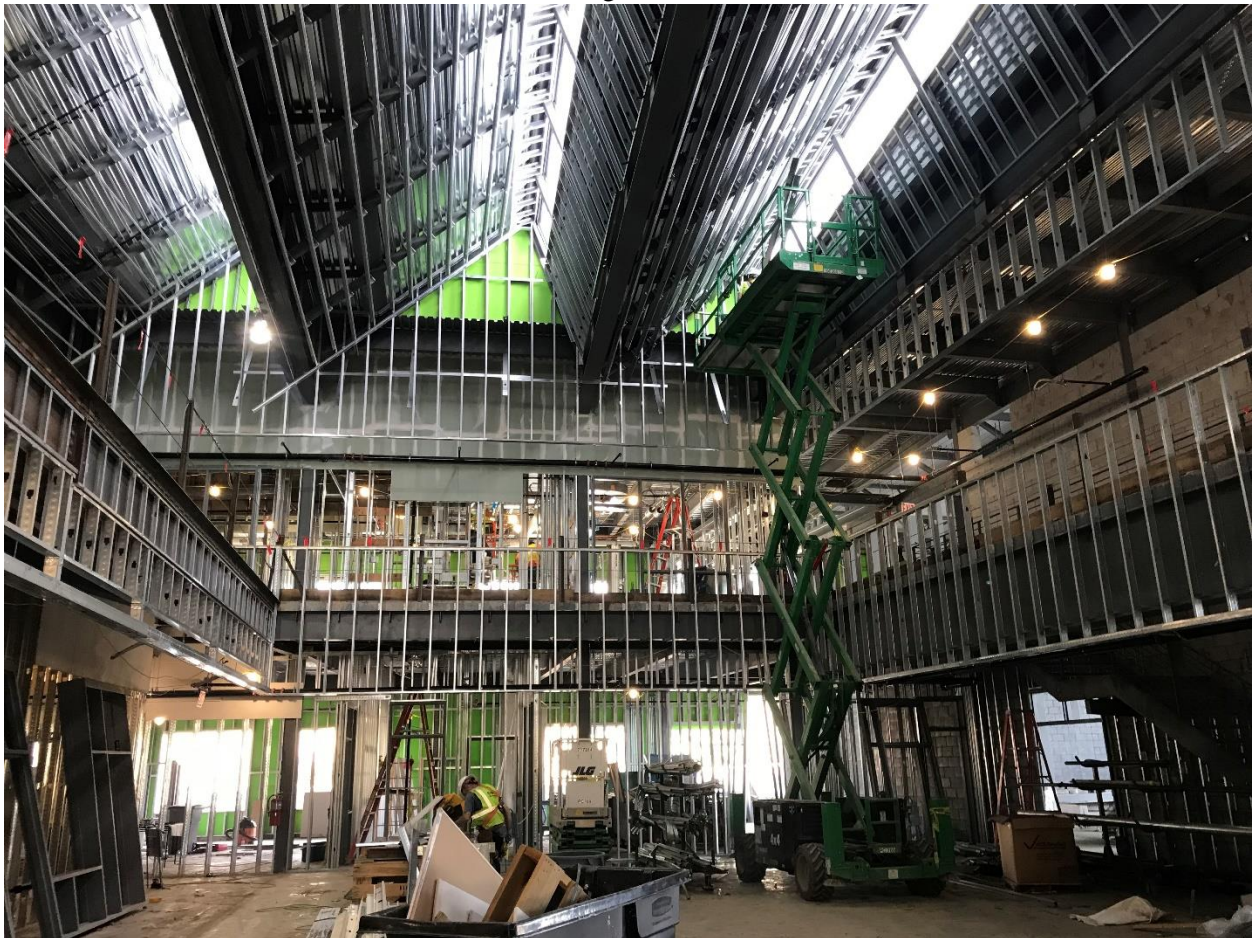
Building North facade – 9/19/2018



Building South Façade – 9/19/18



Interior framing at Café – 9/19/18



Visit our website: www.greenwickschools.org/NLSBC