

Meet the Directors

Community Advisory Committee

September 27, 2018



California Master Plan for Special Education

- California legislature implements the provisions of IDEA through the Master Plan
- Must serve students with disabilities from birth through 22 (or upon completion of diploma)



SELPA Overview

- 1977 all districts and county offices in California were required to form geographical regions
- Must be of sufficient size and scope to provide for all special education service needs of children in that area
- Regions became Special Education Local Planning Areas (SELPA)
- Over 120 SELPAs in the State

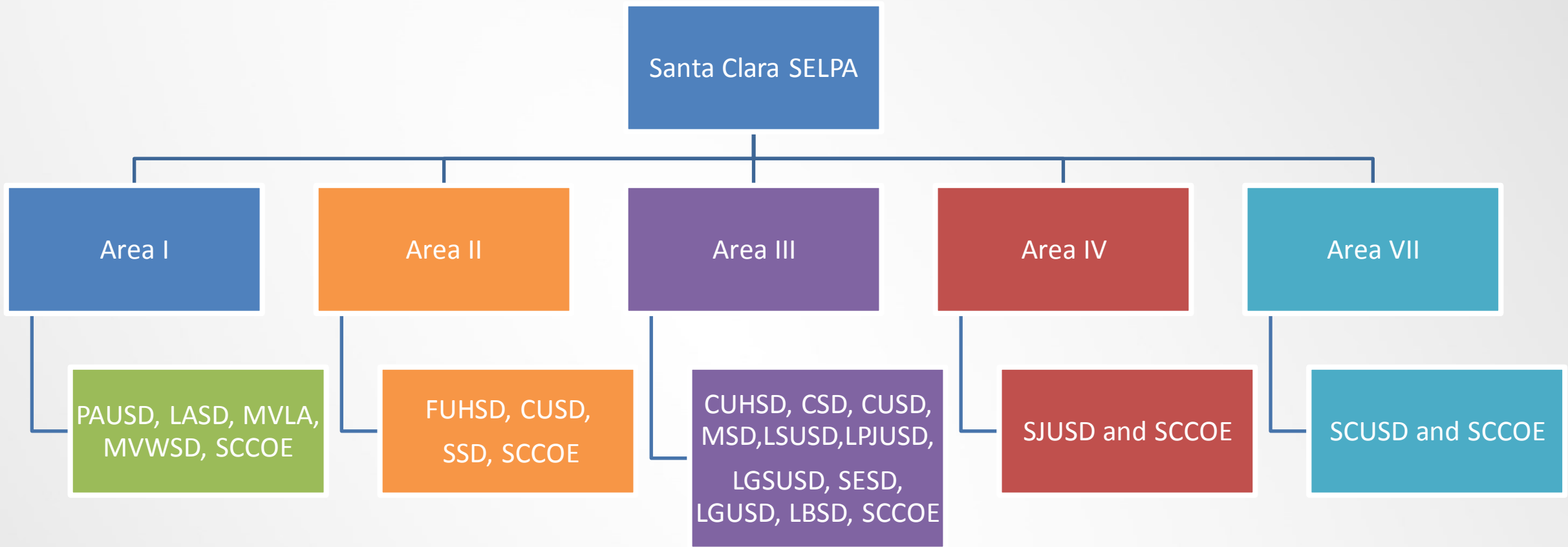


SELPA Overview



- Multi-district
 - Multi-district and county office of education
- Single District
 - Single district and county office of education
- Charter SELPA (CHELPA)
- Each SELPA has a Local Plan describing how it provides special education services



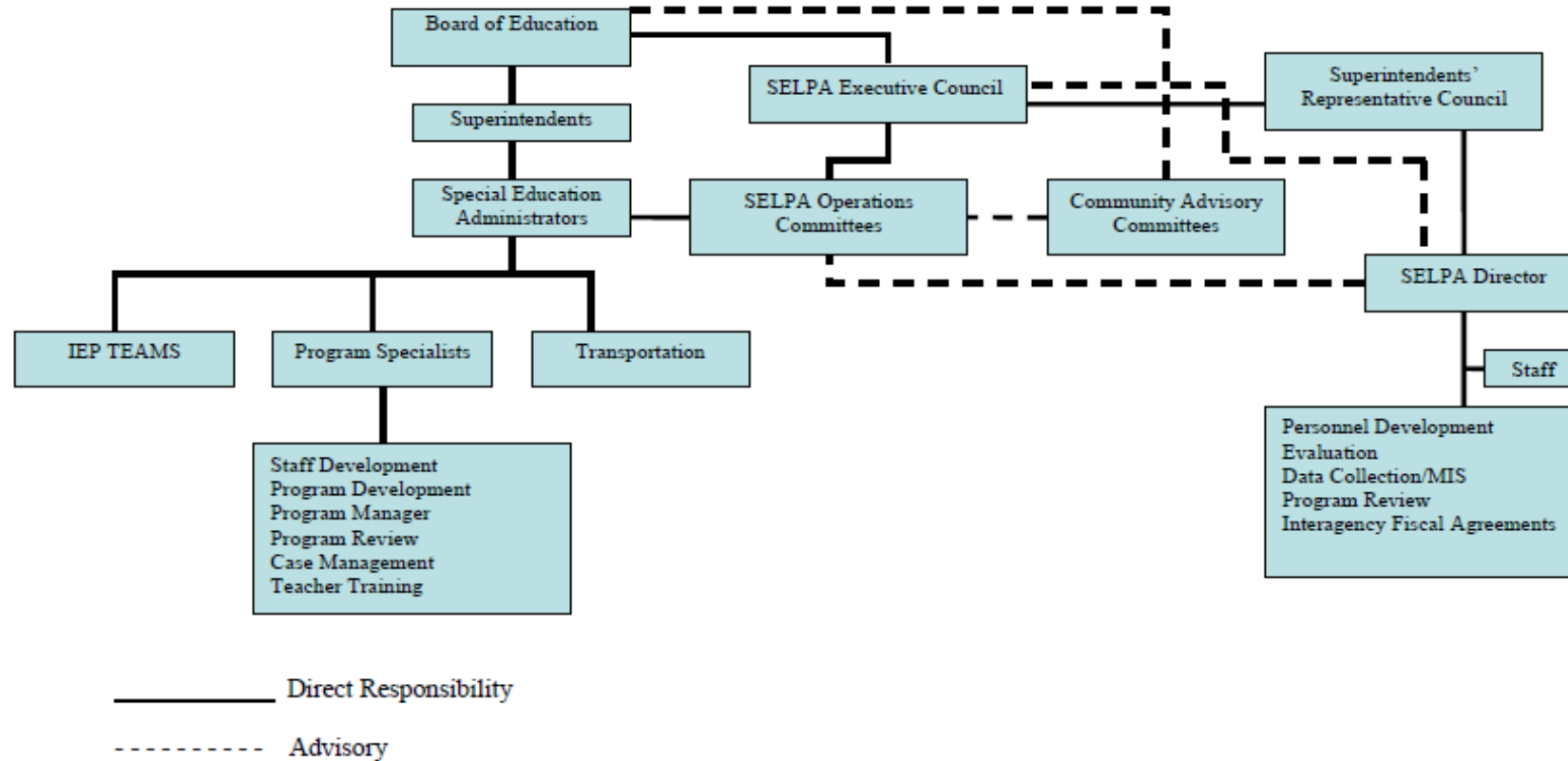


Governance and Administrative Structure

- Administrative Unit located in the Santa Clara County Office of Education (SCCOE)
- Independent from the SCCOE
- Overseen by the Superintendent's Representative Council
- Support the districts with reporting, technical assistance and fiscal operations



Santa Clara County Office of Education
 SELPA II
 Governance Model
 Organizational Chart



SELPA II Plans

- Local Plan describes the function and structure of SELPA II
- Budget Plan delineates the expenditure of special education funds
- Service Plan describes the services offered by districts and the location of services
- Personnel Report outlines who delivers the services

<http://www.sccoe.org/depts/selpa/Pages/default.aspx>



SELPA Profile

Local Plan

- Provides Structure & Assurances

Budget
Allocation Plan

- Provides Funding

Annual Service
Plan

- Provides Access

Personnel
Service Report

- Supports Data



SELPA and District Responsibilities

- Child Find
- Free appropriate public education
- Least restrictive environment
- Parents and students have a right to Due Process
- Individualized Educational Program



SELPA and District Responsibilities

- Regional staff to train and consult with district teachers and administrators
- Submission of special education program data as required by state and federal law
- Coordination with other educational agencies that serve people with special needs



Source: California Education Code, Section 56195-56208



SELPA Responsibilities

- Oversees IEP software system
- Establishes and monitors interagency agreements
- Assists with understanding compliance requirements
- Builds community awareness
- Engages in alternative dispute resolution



Role of the SELPA Director

- Provides technical expertise, information and assistance
- Assists in the formulation and development of standards, policies, procedures and programs
- Assists the Community Advisory Committees (CAC) for each of the five (5) SELPAs.



Role of SELPA Director

- Communicates with other administrators, parents, special education directors, personnel and outside organizations
- Exchanges information with outside organizations and districts
- Provides input to organizations on special education legislation



Role of SELPA Director

PEACE

IS NOT THE ABSENCE

OF CONFLICT BUT

THE ABILITY TO

COPE WITH IT

- Participates in conflict resolutions between parents and districts
- Provides avenues for alternative dispute resolution
- Provides technical assistance to parents
- Provides parent education



SELPA Website Resources

- <http://www.sccoe.org/depts/SELPA/Pages/default.aspx>
- <http://www.sccoe.org/depts/selpa/Pages/Support-Services.aspx>
- <http://www.sccoe.org/depts/selpa/Pages/Resources.aspx>
- <http://www.sccoe.org/depts/selpa/Pages/ParentsAndCommunity.aspx>



Resources

- Parents Helping Parents
<http://www.php.com/>
- Pacer Family Center
<http://www.pacer.org/pandr/>
- First Five
<https://www.first5kids.org/>
- San Andreas Regional Center
<http://www.sanandreasregional.org/>



QUESTIONS?

