

**Annual Financial Report  
Accuracy Certification Statement**

For Fiscal Year Ending

**6/30/2016**

Pennsylvania Department of Education

&

Office of Comptroller Operations

PDE-2056: Intermediate Unit

PDE-2057: School District, AVTS/CTC, Charter School,  
and Special Program Jointure

**CERTIFICATION: By signing this page I agree that the electronic data submitted is a complete and accurate statement of the financial operations and status of the local education agency for the fiscal year. It has been prepared in accordance with generally accepted accounting principles and established Commonwealth of PA reporting guidelines.**

\_\_\_\_\_  
Chief School Administrator Signature

\_\_\_\_\_  
Date

\_\_\_\_\_  
Board Secretary Signature

\_\_\_\_\_  
Date

Rick Henderson

\_\_\_\_\_  
Contact Person

rhenderson@havsd.net

\_\_\_\_\_  
Contact Person E-mail Address

(610)853-5900 Ext :7106

\_\_\_\_\_  
Contact Person Telephone Number

(610)853-5941

\_\_\_\_\_  
Contact Person Fax Number

**Audit Certification**  
**Annual Financial Report:**  
For Fiscal Year Ending **6/30/2016**  
**(Pursuant to PA School Code Section 218(b))**

LEA Name : Haverford Township SD  
AUN Number : 125234502  
County : Delaware

<b>Audit Certification Due:</b> 12/31/2016
---

This certification is applicable to:

- Orig. Annual Financial Report submitted to Comptroller Operations:** \_\_\_\_\_  
Date
  
- Annual Financial Report revisions submitted on:** \_\_\_\_\_  
Date

**Auditing Firm:**

**Auditor Contact Name:**

**Auditor Phone:**

**Auditor E-mail:**

CERTIFICATION: By signing this page I agree that the financial statements of the school have been properly audited as noted above pursuant to Article XXIV, and in the auditor's professional opinion, the Annual Financial Report (PDE-2057) submitted on the date referenced is materially consistent with the audited financial statements.

**Chief School Administrator**

**Board Secretary**

\_\_\_\_\_  
Signature

\_\_\_\_\_  
Date

\_\_\_\_\_  
Signature

\_\_\_\_\_  
Date

Rick Henderson

\_\_\_\_\_  
Contact Person

rhenderson@havsd.net

\_\_\_\_\_  
Contact Person E-mail Address

(610)853-5900      Ext :7106

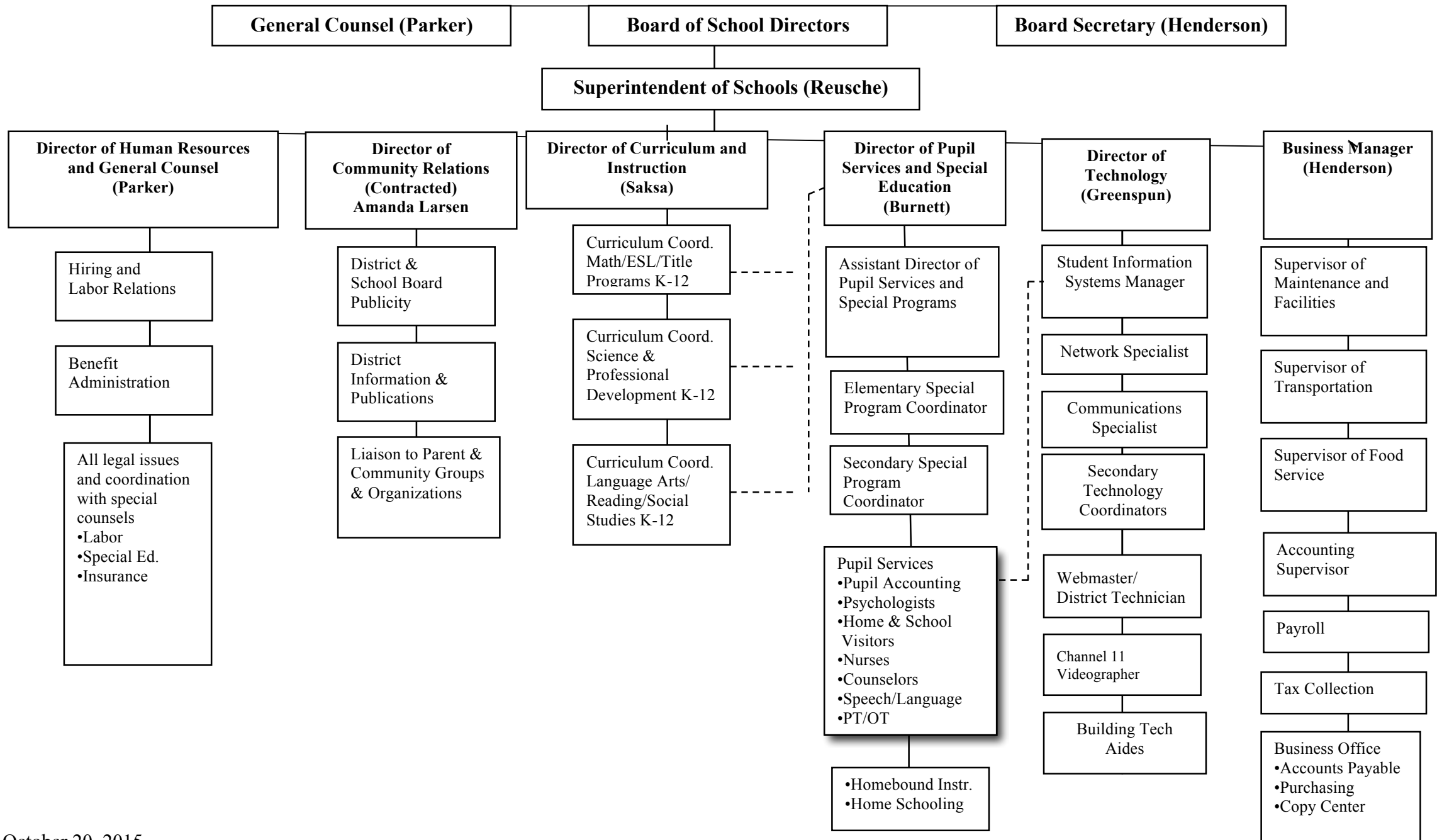
\_\_\_\_\_  
Contact Person Telephone Number

(610)853-5941

\_\_\_\_\_  
Contact Person Fax Number

# SCHOOL DISTRICT OF HAVERFORD TOWNSHIP

Organizational Chart 2015-16 School Year



October 20, 2015

<u>Val Number</u>	<u>Description</u>	<u>Justification</u>
41050	<p>There is an entry in function 5110- 990 object "Other". Please explain what constitutes "Other".</p> <p>Expenditure 5110-990, Fund 10: \$280,670.94</p>	<p>Associated with the Series 2009 variable rate bond issue, \$280,670.94 consists of re-marketing fee \$35,537.22, monthly wire transfer fees \$3,000.00 and letter of credit fees \$242,133.72.</p>
42420	<p>Expenditure Detail: Total current year 2700-513 expenditure varies from prior year by 10%. Correct the data or enter a justification.</p> <p>2700-513, AFR Exp Detail: \$23,529.26 2700-513, PY AFR Amount: \$12,431.57</p>	<p>Increased demand for use of contracted transportation services.</p>

Amounts Expressed in Whole Dollars	<u>General Fund</u> <u>(10)</u>	<u>Public Purpose Trust</u> <u>(27)</u>	<u>Other Compt Approved</u> <u>(28)</u>	<u>Athletic / Activity</u> <u>(29)</u>	<u>Capital Reserve (690.</u> <u>1850)</u> <u>(31)</u>
<b>Assets And Deferred Outflows Of Resources</b>					
<b>Assets</b>					
0100 Cash and Cash Equivalents	17,568,514				
0110 Investments					
0120 Taxes Receivable	391,830				
0130 Due From Other Funds	43,959				
0141 Due From Other Governments	2,762,178				
0142 State Revenue Receivable					
0143 Federal Revenue Receivable					
0145 Other Intergovernmental Revenue Receivable					
0146 Due from Primary Government					
0147 Due from Component Unit					
0150 Other Receivables	414,459				
0170 Inventories					
0180 Prepaid Expenses (Expenditures)					
0190 Other Current Assets					
<b>Total Assets</b>	<b>\$21,180,940</b>				
0910 Deferred Outflows of Resources					
<b>Total Assets And Deferred Outflows Of Resources</b>	<b>\$21,180,940</b>				

Amounts Expressed in Whole Dollars

	<u>Capital Reserve (1431)</u> <u>(32)</u>	<u>Other Capital Projects</u> <u>Fund</u> <u>(39)</u>	<u>Debt Service</u> <u>(40)</u>	<u>Permanent</u> <u>(90)</u>	<u>Total Governmental</u> <u>Funds</u>
<b>Assets And Deferred Outflows Of Resources</b>					
<b>Assets</b>					
0100 Cash and Cash Equivalents					17,568,514
0110 Investments					
0120 Taxes Receivable					391,830
0130 Due From Other Funds					43,959
0141 Due From Other Governments					2,762,178
0142 State Revenue Receivable					
0143 Federal Revenue Receivable					
0145 Other Intergovernmental Revenue Receivable					
0146 Due from Primary Government					
0147 Due from Component Unit					
0150 Other Receivables					414,459
0170 Inventories					
0180 Prepaid Expenses (Expenditures)					
0190 Other Current Assets					
<b>Total Assets</b>					<b>\$21,180,940</b>
0910 Deferred Outflows of Resources					
<b>Total Assets And Deferred Outflows Of Resources</b>					<b>\$21,180,940</b>

Amounts Expressed in Whole Dollars

	<u>General Fund</u> <u>(10)</u>	<u>Public Purpose Trust</u> <u>(27)</u>	<u>Other Compt Approved</u> <u>(28)</u>	<u>Athletic / Activity</u> <u>(29)</u>	<u>Capital Reserve (690.</u> <u>1850)</u> <u>(31)</u>
<b>Liabilities And Deferred Inflows Of Resources And Fund Balances</b>					
<b>Liabilities</b>					
0400 Due to Other Funds					
0411 Due to Other Governments					
0412 Due to Primary Government					
0413 Due to Component Unit					
0420 Accounts Payable	4,383,251				
0430 Contracts Payable					
0440 Current Portion of Long-Term Debt					
0450 Short-Term Payables					
0461 Accrued Salaries and Benefits	7,121,044				
0462 Payroll Deductions and Withholding					
0480 Unearned Revenues	47,452				
0490 Other Current Liabilities					
<b>Total Liabilities</b>	<b>\$11,551,747</b>				
0950 Deferred Inflows of Resources					
<b>Fund Balances</b>					
0810 Nonspendable Fund Balance					
0820 Restricted Fund Balance					
0830 Committed Fund Balance					
0840 Assigned Fund Balance					
0850 Unassigned Fund Balance	9,629,193				
<b>Total Fund Balances</b>	<b>\$9,629,193</b>				
<b>Total Liabilities, Deferred Inflows Of Resources And Fund Balances</b>	<b>\$21,180,940</b>				

Amounts Expressed in Whole Dollars

Capital Reserve (1431)    Other Capital Projects    Debt Service    Permanent    Total Governmental  
(32)    Fund    (40)    (90)    Funds  
(39)

**Liabilities And Deferred Inflows Of Resources And Fund Balances**

<b>Liabilities</b>				
0400	Due to Other Funds			
0411	Due to Other Governments			
0412	Due to Primary Government			
0413	Due to Component Unit			
0420	Accounts Payable			4,383,251
0430	Contracts Payable			
0440	Current Portion of Long-Term Debt			
0450	Short-Term Payables			
0461	Accrued Salaries and Benefits			7,121,044
0462	Payroll Deductions and Withholding			
0480	Unearned Revenues			47,452
0490	Other Current Liabilities			
<b>Total Liabilities</b>				<b>\$11,551,747</b>
<b>Fund Balances</b>				
0810	Nonspendable Fund Balance			
0820	Restricted Fund Balance			
0830	Committed Fund Balance			
0840	Assigned Fund Balance			
0850	Unassigned Fund Balance			9,629,193
<b>Total Fund Balances</b>				<b>\$9,629,193</b>
<b>Total Liabilities, Deferred Inflows Of Resources And Fund Balances</b>				<b>\$21,180,940</b>



Amounts Expressed in Whole Dollars	<u>General Fund</u> <u>(10)</u>	<u>Public Purpose Trust</u> <u>(27)</u>	<u>Other Compt Approved</u> <u>(28)</u>	<u>Athletic / Activity</u> <u>(29)</u>	<u>Capital Reserve (690.</u> <u>1850)</u> <u>(31)</u>
<b>Revenues</b>					
6000 Revenue from Local Sources	90,761,026				
7000 Revenue from State Sources	17,742,164				
8000 Revenue from Federal Sources	358,951				
<b>Total Revenues</b>	<b>\$108,862,141</b>				
<b>Expenditures</b>					
1000 Instruction	64,587,192				
2000 Support Services	30,738,798				
3000 Operation of Non-Instructional Services	1,455,583				
4000 Facilities Acquisition, Construction and Improvement Services					
5110 Debt Service	10,141,114				
5130 Refund of Prior Year Revenues / Receipts	19,837				
5140 Short-Term Borrowing – Interest and Costs					
<b>Total Expenditures</b>	<b>\$106,942,524</b>				
<b>Excess (Deficiency) Of Revenues Over Expenditures</b>	<b>\$1,919,617</b>				
<b>Other Financing Sources (Uses)</b>					
9110 Face Value of Bonds Issued					
9120 Proceeds from Refunding of Bonds					
9130 Bond Premiums					
9200 Proceeds from Extended-Term Financing					
9300 Interfund Transfers - IN					
9400 Sale of or Compensation for Loss of Fixed Assets					
9710 Transfers from Component Units					
9720 Transfers from Primary Governments					
9910 Other Financing Sources Not Listed in the 9000 Series					
9990 Insurance Recoveries					
5120 Debt Service – Refunded Bonds					
5150 Bond Discounts					
5200 Interfund Transfers – Out	723,093				
5300 Transfers Out to Component Units/Primary Governments					
<b>Total Other Financing Sources (Uses)</b>	<b>(\$723,093)</b>				

Amounts Expressed in Whole Dollars	<u>Capital Reserve (1431)</u> <u>(32)</u>	<u>Other Capital Projects</u> <u>Fund</u> <u>(39)</u>	<u>Debt Service</u> <u>(40)</u>	<u>Permanent</u> <u>(90)</u>	<u>Total Governmental</u> <u>Funds</u>
<b>Revenues</b>					
6000 Revenue from Local Sources		396			90,761,422
7000 Revenue from State Sources					17,742,164
8000 Revenue from Federal Sources					358,951
<b>Total Revenues</b>		<b>\$396</b>			<b>\$108,862,537</b>
<b>Expenditures</b>					
1000 Instruction					64,587,192
2000 Support Services					30,738,798
3000 Operation of Non-Instructional Services					1,455,583
4000 Facilities Acquisition, Construction and Improvement Services		1,057,841			1,057,841
5110 Debt Service					10,141,114
5130 Refund of Prior Year Revenues / Receipts					19,837
5140 Short-Term Borrowing – Interest and Costs					
<b>Total Expenditures</b>		<b>\$1,057,841</b>			<b>\$108,000,365</b>
<b>Excess (Deficiency) Of Revenues Over Expenditures</b>		<b>(\$1,057,445)</b>			<b>\$862,172</b>
<b>Other Financing Sources (Uses)</b>					
9110 Face Value of Bonds Issued					
9120 Proceeds from Refunding of Bonds					
9130 Bond Premiums					
9200 Proceeds from Extended-Term Financing					
9300 Interfund Transfers - IN		723,093			723,093
9400 Sale of or Compensation for Loss of Fixed Assets					
9710 Transfers from Component Units					
9720 Transfers from Primary Governments					
9910 Other Financing Sources Not Listed in the 9000 Series					
9990 Insurance Recoveries					
5120 Debt Service – Refunded Bonds					
5150 Bond Discounts					
5200 Interfund Transfers – Out					723,093
5300 Transfers Out to Component Units/Primary Governments					
<b>Total Other Financing Sources (Uses)</b>		<b>\$723,093</b>			<b>\$0</b>

Amounts Expressed in Whole Dollars	<u>General Fund</u> <u>(10)</u>	<u>Public Purpose Trust</u> <u>(27)</u>	<u>Other Compt Approved</u> <u>(28)</u>	<u>Athletic / Activity</u> <u>(29)</u>	<u>Capital Reserve</u> <u>(690.</u> <u>1850)</u> <u>(31)</u>
<b>Special And Extraordinary Items</b>					
9920 Special Items – Gains					
9930 Extraordinary Items – Gains					
5520 Special Items – Losses					
5530 Extraordinary Items – Losses					
<b>Net Change In Fund Balances</b>	<b>\$1,196,524</b>				
<b>Fund Balance</b>					
0001 Fund Balance - Beginning of Fiscal Year	8,432,669				
<b>Fund Balance - End Of Year</b>	<b>\$9,629,193</b>				

Amounts Expressed in Whole Dollars	<u>Capital Reserve (1431)</u> <u>(32)</u>	<u>Other Capital Projects</u> <u>Fund</u> <u>(39)</u>	<u>Debt Service</u> <u>(40)</u>	<u>Permanent</u> <u>(90)</u>	<u>Total Governmental</u> <u>Funds</u>
<b>Special And Extraordinary Items</b>					
9920 Special Items – Gains					
9930 Extraordinary Items – Gains					
5520 Special Items – Losses					
5530 Extraordinary Items – Losses					
<b>Net Change In Fund Balances</b>		(\$334,352)			\$862,172
<b>Fund Balance</b>					
0001 Fund Balance - Beginning of Fiscal Year		334,352			8,767,021
<b>Fund Balance - End Of Year</b>					<b>\$9,629,193</b>

Amounts Expressed in Whole Dollars	<u>Food Service</u> <u>(51)</u>	<u>Child Care</u> <u>Operations</u> <u>(52)</u>	<u>Other Enterprise</u> <u>(58)</u>	<u>TOTAL</u>	<u>Internal Service</u> <u>(60)</u>
<b>Assets And Deferred Outflows Of Resources</b>					
<b>Current Assets</b>					
0100 Cash and Cash Equivalents	18,934			18,934	
0110 Investments					
0130 Due From Other Funds					
0141 Due From Other Governments	62,934			62,934	
0142 State Revenue Receivable					
0143 Federal Revenue Receivable					
0146 Due from Primary Government					
0147 Due from Component Unit					
0150 Other Receivables	14,663			14,663	
0170 Inventories	56,337			56,337	
0180 Prepaid Expenses (Expenditures)					
0190 Other Current Assets					
<b>Total Current Assets</b>	<b>\$152,868</b>			<b>\$152,868</b>	
<b>Noncurrent Assets</b>					
0211 Land					
0212 Site Improvements (Net)					
0220 Buildings and Building Improvements (Net)					
0230 Machinery, Equipment and Furniture (Net)	179,630			179,630	
0250 Construction in Progress					
0260 Long Term Prepayments					
0290 Other Noncurrent Assets					
<b>Total Noncurrent Assets</b>	<b>\$179,630</b>			<b>\$179,630</b>	
0910 Deferred Outflows of Resources	232,000			232,000	
<b>Total Assets And Deferred Outflows Of Resources</b>	<b>\$564,498</b>			<b>\$564,498</b>	

Amounts Expressed in Whole Dollars	<u>Food Service</u> <u>(51)</u>	<u>Child Care</u> <u>Operations</u> <u>(52)</u>	<u>Other Enterprise</u> <u>(58)</u>	<u>TOTAL</u>	<u>Internal Service</u> <u>(60)</u>
<b>Liabilities And Deferred Inflows Of Resources And Net Position</b>					
<b>Current Liabilities</b>					
0400 Due to Other Funds	43,959			43,959	
0411 Due to Other Governments					
0413 Due to Component Unit					
0420 Accounts Payable	40,233			40,233	
0430 Contracts Payable					
0440 Current Portion of Long-Term Debt					
0450 Short-Term Payables					
0461 Accrued Salaries and Benefits	27,522			27,522	
0462 Payroll Deductions and Withholding					
0480 Unearned Revenues	36,427			36,427	
0490 Other Current Liabilities					
<b>Total Current Liabilities</b>	<b>\$148,141</b>			<b>\$148,141</b>	
<b>Noncurrent Liabilities</b>					
0510 Bonds Payable					
0520 Extended-Term Financing Agreements Payable					
0530 Lease-Purchase Obligations					
0540 Accumulated Compensated Absences					
0550 Authority Lease Obligations					
0560 Other Post-Employment Benefits (OPEB)					
0570 Net Pension Liability	2,212,000			2,212,000	
0599 Other Long-Term Liabilities					
<b>Total Noncurrent Liabilities</b>	<b>\$2,212,000</b>			<b>\$2,212,000</b>	
<b>Total Liabilities</b>	<b>\$2,360,141</b>			<b>\$2,360,141</b>	
0950 Deferred Inflows of Resources	13,000			13,000	
<b>Net Position</b>					
0791 Invested in Capital Assets, Net of Related Debt	179,630			179,630	
0008 Restricted Net Position (0792 – 0798)					
0799 Unrestricted Net Position	(1,988,273)			(1,988,273)	
<b>Total Net Position</b>	<b>(\$1,808,643)</b>			<b>(\$1,808,643)</b>	
<b>Total Liabilities And Deferred Inflows Of Resources And Net Position</b>	<b>\$564,498</b>			<b>\$564,498</b>	

Amounts Expressed in Whole Dollars	<u>Food Service</u> <u>(51)</u>	<u>Child Care Operations</u> <u>(52)</u>	<u>Other Enterprise</u> <u>(58)</u>	<u>TOTAL</u>	<u>Internal Service</u> <u>(60)</u>
<b>Operating Revenues</b>					
6600 Food Service Revenue	1,321,094			1,321,094	
0071 Charges for Services					
0072 Other Operating Revenue					
<b>Total Operating Revenues</b>	<b>\$1,321,094</b>			<b>\$1,321,094</b>	
<b>Operating Expenses</b>					
100 Personnel Services – Salaries	724,030			724,030	
200 Personnel Services – Employee Benefits	425,083			425,083	
300 Purchased Professional and Technical Services					
400 Purchased Property Services	26,540			26,540	
500 Other Purchased Services					
600 Supplies	758,817			758,817	
740 Depreciation	29,282			29,282	
810 Dues and Fees					
890 Miscellaneous Expenditures	2,114			2,114	
<b>Total Operating Expenses</b>	<b>\$1,965,866</b>			<b>\$1,965,866</b>	
<b>Operating Income (Loss)</b>	<b>(\$644,772)</b>			<b>(\$644,772)</b>	
<b>Non Operating Revenues (Expenses)</b>					
6500 Earnings on Investments	106			106	
6920 Contributions and Donations from Private Sources					
6930 Gains or Losses on Sale of Fixed Assets					
6991 Refunds of a Prior Year Expenditure					
7000 Revenue from State Sources	150,483			150,483	
8000 Revenue from Federal Sources	371,809			371,809	
820 Claims and Judgments Against the LEA					
830 Interest					
<b>TOTAL Non Operating Revenues (Expenses)</b>	<b>\$522,398</b>			<b>\$522,398</b>	
<b>Income (Loss) Before Contributions And Transfers</b>	<b>(\$122,374)</b>			<b>(\$122,374)</b>	

Amounts Expressed in Whole Dollars	<u>Food Service</u> <u>(51)</u>	<u>Child Care Operations</u> <u>(52)</u>	<u>Other Enterprise</u> <u>(58)</u>	<u>TOTAL</u>	<u>Internal Service</u> <u>(60)</u>
<b>Contributions, Transfers, and Special and Extraordinary Items</b>					
5200 Interfund Transfers – Out					
5300 Transfers Out to Component Units/Primary Governments					
5520 Special Items – Losses					
5530 Extraordinary Items – Losses					
9300 Interfund Transfers - IN					
9500 Capital Contributions					
9700 Transfers IN From Component Units/Primary Governments					
9920 Special Items – Gains					
9930 Extraordinary Items – Gains					
<b>Change In Net Position</b>	<b>(\$122,374)</b>			<b>(\$122,374)</b>	
0002 Net Position - Beginning of Fiscal Year	(1,686,269)			(1,686,269)	
0003 Accounting Changes / Residual Equity Transfers					
<b>Net Position - End Of Year</b>	<b>(\$1,808,643)</b>			<b>(\$1,808,643)</b>	



Amounts Expressed in Whole Dollars	<u>Food Service</u> <u>(51)</u>	<u>Child Care Operations</u> <u>(52)</u>	<u>Other Enterprise</u> <u>(58)</u>	<u>TOTAL</u>	<u>Internal Service(60)</u>
<b>Cash Flows From Operating Activities</b>					
0011 Cash Receipts From Users	1,311,888			1,311,888	
0012 Cash Receipts From Assessments Made to Other Funds					
0013 Cash Receipts From Earnings on Investments					
0014 Cash Receipts From Other Operating Revenue					
0015 Cash Payments To Employees For Services	1,141,141			1,141,141	
0016 Cash Payments For Insurance Claims					
0017 Cash Payments To Suppliers For Goods and Services	645,947			645,947	
0018 Cash Payments For Other Operating Expenses					
<b>Net Cash Provided By (Used For) Operating Activities</b>	<b>(\$475,200)</b>			<b>(\$475,200)</b>	
<b>Cash Flows From Non-Capital Financing Activities</b>					
0021 Receipts From Local Sources - 6000					
0022 Receipts From State Sources - 7000	154,663			154,663	
0023 Receipts From Federal Sources -8000	312,654			312,654	
0024 Notes and Loans Received (Repaid)					
0025 Interest Paid on Notes/Loans - 5100-830					
0026 Operating Transfers In (Out)/Residual Equity Trans					
0027 Operating Transfers In (Out) Primary Government / Comp Unit					
0028 Receipts From Refund of Prior Year Expenditures - 6991					
0029 Special and Extraordinary Gains (losses)					
<b>Net Cash Prov By (Used for) Non-Capital Financing Activities</b>	<b>\$467,317</b>			<b>\$467,317</b>	
<b>Cash Flows From Capital and Related Financing Activities</b>					
0031 Payments For Fac Acq, Const, and Imp - 4000	(22,242)			(22,242)	
0032 Gain / (Loss) on Sale of Fixed Assets - 6930					
0033 Proceeds From Extended Term Financing - 9200					
0034 Principal Paid on Financing Agreements					
0035 Interest Paid on Financing Agreements - 5100-830					
0036 (Inc) Dec in Contributed Capital					
<b>Net Cash Prov By (Used for) Capital and Related Financing Activities</b>	<b>(\$22,242)</b>			<b>(\$22,242)</b>	
<b>Cash Flows From Investing Activities</b>					
0041 Earnings on Investments - 6500	106			106	
0042 Purchase of Inv Securities / Deposits to Inv Pools					
0043 Receipts From Investment Pool Withdrawals					
0044 Proceeds from Sale and Maturity of Inv Securities					
0045 Loans Received (Paid)					
<b>Net Cash Prov By (Used for) Investing Activities</b>	<b>\$106</b>			<b>\$106</b>	

	<u>Food Service</u> <u>(51)</u>	<u>Child Care Operations</u> <u>(52)</u>	<u>Other Enterprise</u> <u>(58)</u>	<u>TOTAL</u>	<u>Internal Service</u> <u>(60)</u>
<b>Net Increase (Decrease) in Cash Flows</b>	<b>(30,019)</b>			<b>(30,019)</b>	
0004 Cash and Cash Equivalents Beginning of Year	48,953			48,953	
<b>Cash and Cash Equivalents at Year End</b>	<b>\$18,934</b>			<b>\$18,934</b>	
<hr/>					
<b>Reconciliation of Operating Income (Loss) To Net Cash Provided by (Used For) Operating Activities</b>					
0005 Operating Income (Loss) per REP	(644,772)			(644,772)	
<b>Adjustments</b>					
0051 Depreciation and Net Amortization	29,282			29,282	
0052 Provision for Uncollectible Accounts					
0053 Other Adjustments					
<b>Effect of Changes in Assets, Liabilities, Deferred Outflows and Deferred Inflows</b>					
0054 (Inc) Dec In Accounts Receivable (0120-0150)	89,543			89,543	
0055 Advances to Other Funds (0160)					
0056 (Inc) Dec in Inventories (0170)	(3,271)			(3,271)	
0057 (Inc) Dec in Prepaid Expenses (0180)					
0058 (Inc) Dec in Other Current or Noncurrent Assets	79,606			79,606	
0064 Deferred Outflows (0910)					
0059 Inc (Dec) in Accounts Payable (0400-0450)	(38,137)			(38,137)	
0060 Inc (Dec) in Accrued Salaries/Benefits (0461)	(28,028)			(28,028)	
0065 Inc (Dec) in Net Pension Liabilities (0570)	36,000			36,000	
0066 Inc (Dec) in Other Postemp Benefit Oblig (0560)					
0061 Inc (Dec) in Payroll Deductions/Withholding (0462)					
0062 Inc (Dec) in Unearned Revenue (0480)	4,577			4,577	
0063 Inc (Dec) in Other Current or Noncurrent Liabilities					
0067 Deferred Inflows (0950)					
<b>Total Adjustments</b>	<b>\$169,572</b>			<b>\$169,572</b>	
<b>Cash Provided By (Used for) Total</b>	<b>(\$475,200)</b>			<b>(\$475,200)</b>	

COMBINED STATEMENT OF CASH FLOWS  
SCHEDULE OF NONCASH INVESTING, CAPITAL, AND FINANCING ACTIVITIES

Explanation of Transaction and Balance Sheet Effect	Amount
<b>Total</b>	

LEA : 125234502 Haverford Township SD

Printed 11/21/2016 1:31:55 PM

Amounts Expressed in Whole Dollars

	<u>Private Purpose Trust</u> (71)	<u>Investment Trust</u> (72)	<u>Pension Trust</u> (73)	<u>Activity</u> (81)
<b>Assets And Deferred Outflows Of Resources</b>				
<b>Assets</b>				
0100 Cash and Cash Equivalents		13,726		625,671
0110 Investments				
0130 Due From Other Funds		127,629		
0147 Due from Component Unit				
0150 Other Receivables				
0170 Inventories				
0180 Prepaid Expenses (Expenditures)				
0190 Other Current Assets				
0220 Buildings and Building Improvements (Net)				
0230 Machinery, Equipment and Furniture (Net)				
<b>Total Assets</b>		<b>\$141,355</b>		<b>\$625,671</b>
0910 Deferred Outflows of Resources				
<b>Total Assets And Deferred Outflows Of Resources</b>		<b>\$141,355</b>		<b>\$625,671</b>

LEA : 125234502 Haverford Township SD

Printed 11/21/2016 1:31:55 PM

Amounts Expressed in Whole Dollars

	<u>Other Agency</u> <u>(89)</u>	<u>Discrete Component Units</u> <u>(98)</u>	<u>Discrete Component Units</u> <u>(99)</u>	<u>Total Fiduciary Funds</u>
<b>Assets And Deferred Outflows Of Resources</b>				
<b>Assets</b>				
0100 Cash and Cash Equivalents				639,397
0110 Investments				
0130 Due From Other Funds				127,629
0147 Due from Component Unit				
0150 Other Receivables				
0170 Inventories				
0180 Prepaid Expenses (Expenditures)				
0190 Other Current Assets				
0220 Buildings and Building Improvements (Net)				
0230 Machinery, Equipment and Furniture (Net)				
<b>Total Assets</b>				<b>\$767,026</b>
0910 Deferred Outflows of Resources				
<b>Total Assets And Deferred Outflows Of Resources</b>				<b>\$767,026</b>

LEA : 125234502 Haverford Township SD

Printed 11/21/2016 1:31:55 PM

Amounts Expressed in Whole Dollars	<u>Private Purpose Trust</u> (71)	<u>Investment Trust</u> (72)	<u>Pension Trust</u> (73)	<u>Activity</u> (81)
<b>Liabilities, Deferred Inflows Of Resources And Net Position</b>				
<b>Liabilities</b>				
0400 Due to Other Funds				625,671
0411 Due to Other Governments				
0412 Due to Primary Government				
0413 Due to Component Unit				
0420 Accounts Payable				
0430 Contracts Payable				
0450 Short-Term Payables				
0461 Accrued Salaries and Benefits				
0462 Payroll Deductions and Withholding				
0480 Unearned Revenues				
0490 Other Current Liabilities				
<b>Total Liabilities</b>				<b>\$625,671</b>
0950 Deferred Inflows of Resources				
<b>Net Position</b>				
0791 Invested in Capital Assets, Net of Related Debt				
0009 Restricted Net Position (0792 – 0798)	141,355			
0799 Unrestricted Net Position				
<b>Total Net Position</b>	<b>\$141,355</b>			
<b>Total Liabilities, Deferred Inflows Of Resources And Net Position</b>	<b>\$141,355</b>			<b>\$625,671</b>

LEA : 125234502 Haverford Township SD

Printed 11/21/2016 1:31:55 PM

Amounts Expressed in Whole Dollars	<u>Other Agency</u> (89)	<u>Discrete Component Units</u> (98)	<u>Discrete Component Units</u> (99)	<u>Total Fiduciary Funds</u>
<b>Liabilities, Deferred Inflows Of Resources And Net Position</b>				
<b>Liabilities</b>				
0400 Due to Other Funds				625,671
0411 Due to Other Governments				
0412 Due to Primary Government				
0413 Due to Component Unit				
0420 Accounts Payable				
0430 Contracts Payable				
0450 Short-Term Payables				
0461 Accrued Salaries and Benefits				
0462 Payroll Deductions and Withholding				
0480 Unearned Revenues				
0490 Other Current Liabilities				
<b>Total Liabilities</b>				<b>\$625,671</b>
0950 Deferred Inflows of Resources				
<b>Net Position</b>				
0791 Invested in Capital Assets, Net of Related Debt				
0009 Restricted Net Position (0792 – 0798)				141,355
0799 Unrestricted Net Position				
<b>Total Net Position</b>				<b>\$141,355</b>
<b>Total Liabilities, Deferred Inflows Of Resources And Net Position</b>				<b>\$767,026</b>

Amounts Expressed in Whole Dollars	<u>Private Purpose Trust</u> <u>(71)</u>	<u>Investment Trust</u> <u>(72)</u>	<u>Pension Trust</u> <u>(73)</u>	<u>Discrete Component</u> <u>Units</u> <u>(98)</u>	<u>Discrete Component</u> <u>Units</u> <u>(99)</u>	<u>Total Fiduciary</u> <u>Funds</u>
<b>Additions</b>						
0091 Gifts and Contributions	50,854					50,854
0092 Other Additions	227					227
<b>Deductions</b>						
0093 Scholarships Awarded	57,480					57,480
0094 Other Deductions						
<b>Change In Net Position</b>	<b>(\$6,399)</b>					<b>(\$6,399)</b>
0006 Net Position – Beginning of Fiscal Year	147,754					147,754
0007 Net Position Held in Trust for Pension Benefits						
<b>Net Position - End of Fiscal Year</b>	<b>\$141,355</b>					<b>\$141,355</b>



	<u>Revenue Reported In Current Year</u>	<u>Current Year Tax Accrual</u>	<u>Prior Year Tax Accrual</u>	<u>Taxes Collected In Current Year</u>
<b><u>Revenue from Local Sources</u></b>				
6111 Current Real Estate Taxes	85,903,112.55			85,903,112.55
6112 Interim Real Estate Taxes	430,552.38			430,552.38
6113 Public Utility Realty Taxes	95,837.47			95,837.47
6153 Current Act 511 Real Estate Transfer Taxes	1,509,210.67			1,509,210.67
6411 Delinquent Real Estate Taxes	1,726,708.81			1,726,708.81
6500 Earnings on Investments	65,689.78			
6700 Revenues from LEA Activities	62,436.26			
6832 Federal IDEA Revenue Received as Pass Through	791,022.00			
6910 Rentals	94,125.96			
6942 Summer School Tuition	36,993.13			
6944 Receipts from Other LEAs in Pennsylvania - Education	9,625.10			
6999 Other Revenues Not Specified Above	35,712.38			
<b>TOTAL Revenue from Local Sources</b>	<b>\$90,761,026.49</b>			<b>\$89,665,421.88</b>

**Revenue Reported  
In Current Year**

**Revenue from State Sources**

7110 Basic Education Funding	3,128,234.57		
7271 Special Education funds for School-Aged Pupils	2,398,269.35		
7311 Pupil Transportation Subsidy	1,241,763.08		
7320 Rental and Sinking Fund Payments / Building Reimbursement Subsidy	32,073.35		
7330 Health Services (Medical, Dental, Nurse, Act 25)	128,360.59		
7340 State Property Tax Reduction Allocation	2,103,880.76		
7505 Ready to Learn Block Grant	192,476.00		
7599 Other State Revenue Not Listed Elsewhere in the 7000 Series	4,419.00		
7810 State Share of Social Security and Medicare Taxes	1,913,985.39		
7820 State Share of Retirement Contributions	6,598,701.95		
<b>TOTAL Revenue from State Sources</b>	<b>\$17,742,164.04</b>		

**Revenue Reported  
In Current Year**

**Revenue from Federal Sources**

8514 NCLB, Title I - Improving the Academic Achievement of the Disadvantaged	238,729.88		
8515 NCLB, Title II - Preparing, Training and Recruiting High Quality Teachers and Principals	96,206.23		
8820 Medical Assistance Reimbursement for Administrative Claiming (Quarterly) Program	24,014.79		
<b>TOTAL Revenue from Federal Sources</b>	<b>\$358,950.90</b>		
<b>TOTAL FROM ALL SOURCES</b>	<b>\$108,862,141.43</b>		<b>\$89,665,421.88</b>

Revenue from Local Sources	90,761,026.49
Revenue from State Sources	17,742,164.04
Revenue from Federal Sources	358,950.90
Other Financing Sources	
<b>TOTAL FROM ALL SOURCES</b>	<b>\$108,862,141.43</b>

General Fund (10)

		<u>Total</u>
<b>1000 Instruction</b>		
<b>100 Personnel Services – Salaries</b>		
100 Personnel Services – Salaries		35,051,353.88
<b>Total Personnel Services – Salaries</b>		<b>\$35,051,353.88</b>
<b>200 Personnel Services – Employee Benefits</b>		
210 Group Insurance – Contracted Provider		6,710,357.66
220 Social Security Contributions		2,640,768.75
230 PSERS Retirement Contributions		9,079,602.48
240 Tuition Reimbursement		187,154.00
250 Unemployment Compensation		17,275.55
260 Workers' Compensation		502,371.00
270 Group Insurance – Self-Insurance		12,000.00
290 Other Current Employee Benefits		73,229.75
<b>Total Personnel Services – Employee Benefits</b>		<b>\$19,222,759.19</b>
<b>300 Purchased Professional and Technical Services</b>		
322 Professional Educational Services – Ius		2,212,933.07
330 Other Professional Services		379,429.27
<b>Total Purchased Professional and Technical Services</b>		<b>\$2,592,362.34</b>
<b>400 Purchased Property Services</b>		
410 Cleaning Services		5,626.77
430 Repairs and Maintenance Services		58,779.18
440 Rentals		266,533.12
<b>Total Purchased Property Services</b>		<b>\$330,939.07</b>
<b>500 Other Purchased Services</b>		
530 Communications		134.88
550 Printing and Binding		119.75
561 Tuition To Other School Districts Within the State		20,331.75
562 Tuition To Pennsylvania Charter Schools		475,475.08
563 Tuition To Nonpublic Schools		1,343,916.29
564 Tuition To Career and Technology Centers		463,408.24
566 Tuition To Institutions of Higher Education and Technical Institutes		1,250,790.00
567 Tuition To Approved Private Schools (APS) and PA Chartered Schools for the Deaf and Blind		2,155,537.91
568 Tuition To Private Residential Rehabilitative Institutions (PRRI) [In-State] and Detention Centers		7,508.38
580 Travel		761.20
594 IU Payment By Withholding for Institutionalized Children's Programs – Special Classes		8,938.22
<b>Total Other Purchased Services</b>		<b>\$5,726,921.70</b>
<b>600 Supplies</b>		
610 General Supplies		496,540.95
640 Books and Periodicals		583,856.00
650 Supplies & Fees – Technology Related		162,858.09
<b>Total Supplies</b>		<b>\$1,243,255.04</b>
<b>700 Property</b>		
750 Equipment – Original and Additional		401,454.06
760 Equipment – Replacement		12,824.45

**General Fund (10)**

<b>1000 Instruction</b>		<u><b>Total</b></u>
<b>Total Property</b>		<b>\$414,278.51</b>
<b>800 <u>Other Objects</u></b>		
810 Dues and Fees		5,322.00
<b>Total Other Objects</b>		<b>\$5,322.00</b>
<b>Total 1000 Instruction</b>		<b>\$64,587,191.73</b>

LEA : 125234502 Haverford Township SD

Printed 11/21/2016 1:31:59 PM

Page - 3 of 21

**General Fund (10)****1100 Regular Programs – Elementary / Secondary**

	<u>Elementary</u>	<u>Secondary</u>	<u>Federal</u>	<u>Total</u>
<b>100 Personnel Services – Salaries</b>				
100 Personnel Services – Salaries	12,457,143.19	12,928,731.78	169,719.28	25,555,594.25
<b>Total Personnel Services – Salaries</b>	<b>\$12,457,143.19</b>	<b>\$12,928,731.78</b>	<b>\$169,719.28</b>	<b>\$25,555,594.25</b>
<b>200 Personnel Services – Employee Benefits</b>				
210 Group Insurance – Contracted Provider	2,400,971.10	1,997,656.04	50,522.52	4,449,149.66
220 Social Security Contributions	940,040.10	974,501.97	13,652.63	1,928,194.70
230 PSERS Retirement Contributions	3,234,272.34	3,348,071.16	44,086.39	6,626,429.89
240 Tuition Reimbursement	98,731.00	72,810.00		171,541.00
250 Unemployment Compensation	17,003.60	271.95		17,275.55
260 Workers' Compensation		502,371.00		502,371.00
270 Group Insurance – Self-Insurance	8,500.00	3,500.00		12,000.00
290 Other Current Employee Benefits	38,047.50	5,958.00		44,005.50
<b>Total Personnel Services – Employee Benefits</b>	<b>\$6,737,565.64</b>	<b>\$6,905,140.12</b>	<b>\$108,261.54</b>	<b>\$13,750,967.30</b>
<b>300 Purchased Professional and Technical Services</b>				
322 Professional Educational Services – Ius		4,730.00		4,730.00
330 Other Professional Services	7,291.60	2,580.00	19,576.33	29,447.93
<b>Total Purchased Professional and Technical Services</b>	<b>\$7,291.60</b>	<b>\$7,310.00</b>	<b>\$19,576.33</b>	<b>\$34,177.93</b>
<b>400 Purchased Property Services</b>				
410 Cleaning Services		5,626.77		5,626.77
430 Repairs and Maintenance Services	17,390.70	41,388.48		58,779.18
440 Rentals	107,176.21	159,356.91		266,533.12
<b>Total Purchased Property Services</b>	<b>\$124,566.91</b>	<b>\$206,372.16</b>		<b>\$330,939.07</b>
<b>500 Other Purchased Services</b>				
530 Communications		134.88		134.88
550 Printing and Binding		119.75		119.75
562 Tuition To Pennsylvania Charter Schools	177,139.79	135,633.99		312,773.78
580 Travel	299.24			299.24
<b>Total Other Purchased Services</b>	<b>\$177,439.03</b>	<b>\$135,888.62</b>		<b>\$313,327.65</b>
<b>600 Supplies</b>				
610 General Supplies	193,177.66	247,336.84	516.99	441,031.49
640 Books and Periodicals	450,704.79	114,622.75		565,327.54
650 Supplies & Fees – Technology Related	10,000.00	58,828.59	32,625.00	101,453.59
<b>Total Supplies</b>	<b>\$653,882.45</b>	<b>\$420,788.18</b>	<b>\$33,141.99</b>	<b>\$1,107,812.62</b>
<b>700 Property</b>				
750 Equipment – Original and Additional	142,136.97	232,331.78		374,468.75
760 Equipment – Replacement	3,445.00	9,379.45		12,824.45
<b>Total Property</b>	<b>\$145,581.97</b>	<b>\$241,711.23</b>		<b>\$387,293.20</b>
<b>800 Other Objects</b>				
810 Dues and Fees		5,272.00	50.00	5,322.00
<b>Total Other Objects</b>		<b>\$5,272.00</b>	<b>\$50.00</b>	<b>\$5,322.00</b>
<b>Total 1100 Regular Programs – Elementary / Secondary</b>	<b>\$20,303,470.79</b>	<b>\$20,851,214.09</b>	<b>\$330,749.14</b>	<b>\$41,485,434.02</b>

**General Fund (10)**

**1110 Regular Programs**

	<u>Elementary</u>	<u>Secondary</u>	<u>Federal</u>	<u>Total</u>
<b>100 Personnel Services – Salaries</b>				
100 Personnel Services – Salaries	12,457,143.19	12,928,731.78	169,719.28	25,555,594.25
<b>Total Personnel Services – Salaries</b>	<b>\$12,457,143.19</b>	<b>\$12,928,731.78</b>	<b>\$169,719.28</b>	<b>\$25,555,594.25</b>
<b>200 Personnel Services – Employee Benefits</b>				
210 Group Insurance – Contracted Provider	2,400,971.10	1,997,656.04	50,522.52	4,449,149.66
220 Social Security Contributions	940,040.10	974,501.97	13,652.63	1,928,194.70
230 PSERS Retirement Contributions	3,234,272.34	3,348,071.16	44,086.39	6,626,429.89
240 Tuition Reimbursement	98,731.00	72,810.00		171,541.00
250 Unemployment Compensation	17,003.60	271.95		17,275.55
260 Workers' Compensation		502,371.00		502,371.00
270 Group Insurance – Self-Insurance	8,500.00	3,500.00		12,000.00
290 Other Current Employee Benefits	38,047.50	5,958.00		44,005.50
<b>Total Personnel Services – Employee Benefits</b>	<b>\$6,737,565.64</b>	<b>\$6,905,140.12</b>	<b>\$108,261.54</b>	<b>\$13,750,967.30</b>
<b>300 Purchased Professional and Technical Services</b>				
322 Professional Educational Services – Ius		4,730.00		4,730.00
330 Other Professional Services	7,291.60	2,580.00	19,576.33	29,447.93
<b>Total Purchased Professional and Technical Services</b>	<b>\$7,291.60</b>	<b>\$7,310.00</b>	<b>\$19,576.33</b>	<b>\$34,177.93</b>
<b>400 Purchased Property Services</b>				
410 Cleaning Services		5,626.77		5,626.77
430 Repairs and Maintenance Services	17,390.70	41,388.48		58,779.18
440 Rentals	107,176.21	159,356.91		266,533.12
<b>Total Purchased Property Services</b>	<b>\$124,566.91</b>	<b>\$206,372.16</b>		<b>\$330,939.07</b>
<b>500 Other Purchased Services</b>				
530 Communications		134.88		134.88
550 Printing and Binding		119.75		119.75
562 Tuition To Pennsylvania Charter Schools	177,139.79	135,633.99		312,773.78
580 Travel	299.24			299.24
<b>Total Other Purchased Services</b>	<b>\$177,439.03</b>	<b>\$135,888.62</b>		<b>\$313,327.65</b>
<b>600 Supplies</b>				
610 General Supplies	193,177.66	247,336.84	516.99	441,031.49
640 Books and Periodicals	450,704.79	114,622.75		565,327.54
650 Supplies & Fees – Technology Related	10,000.00	58,828.59	32,625.00	101,453.59
<b>Total Supplies</b>	<b>\$653,882.45</b>	<b>\$420,788.18</b>	<b>\$33,141.99</b>	<b>\$1,107,812.62</b>
<b>700 Property</b>				
750 Equipment – Original and Additional	142,136.97	232,331.78		374,468.75
760 Equipment – Replacement	3,445.00	9,379.45		12,824.45
<b>Total Property</b>	<b>\$145,581.97</b>	<b>\$241,711.23</b>		<b>\$387,293.20</b>
<b>800 Other Objects</b>				
810 Dues and Fees		5,272.00	50.00	5,322.00
<b>Total Other Objects</b>		<b>\$5,272.00</b>	<b>\$50.00</b>	<b>\$5,322.00</b>
<b>Total 1110 Regular Programs</b>	<b>\$20,303,470.79</b>	<b>\$20,851,214.09</b>	<b>\$330,749.14</b>	<b>\$41,485,434.02</b>



**General Fund (10)**

**1200 Special Programs – Elementary / Secondary**

	<u>Elementary</u>	<u>Secondary</u>	<u>Federal</u>	<u>Total</u>
<b>100 Personnel Services – Salaries</b>				
100 Personnel Services – Salaries	4,481,686.78	4,623,074.29	27,290.73	9,132,051.80
<b>Total Personnel Services – Salaries</b>	<b>\$4,481,686.78</b>	<b>\$4,623,074.29</b>	<b>\$27,290.73</b>	<b>\$9,132,051.80</b>
<b>200 Personnel Services – Employee Benefits</b>				
210 Group Insurance – Contracted Provider	1,161,134.86	1,056,713.23	10,104.30	2,227,952.39
220 Social Security Contributions	335,990.36	347,022.62	2,084.70	685,097.68
230 PSERS Retirement Contributions	1,161,328.70	1,197,581.70	7,209.94	2,366,120.34
240 Tuition Reimbursement	10,217.00	5,396.00		15,613.00
290 Other Current Employee Benefits	22,586.75	6,637.50		29,224.25
<b>Total Personnel Services – Employee Benefits</b>	<b>\$2,691,257.67</b>	<b>\$2,613,351.05</b>	<b>\$19,398.94</b>	<b>\$5,324,007.66</b>
<b>300 Purchased Professional and Technical Services</b>				
322 Professional Educational Services – lus	145,098.91	1,236,145.43	787,022.00	2,168,266.34
330 Other Professional Services		345,981.34	4,000.00	349,981.34
<b>Total Purchased Professional and Technical Services</b>	<b>\$145,098.91</b>	<b>\$1,582,126.77</b>	<b>\$791,022.00</b>	<b>\$2,518,247.68</b>
<b>500 Other Purchased Services</b>				
561 Tuition To Other School Districts Within the State	17,158.71	3,173.04		20,331.75
562 Tuition To Pennsylvania Charter Schools	69,967.39	92,733.91		162,701.30
563 Tuition To Nonpublic Schools	338,966.94	1,004,949.35		1,343,916.29
567 Tuition To Approved Private Schools (APS) and PA Chartered Schools for the Deaf and Blind	479,880.03	1,675,657.88		2,155,537.91
568 Tuition To Private Residential Rehabilitative Institutions (PRRI) [In-State] and Detention Centers		7,508.38		7,508.38
580 Travel		455.12		455.12
594 IU Payment By Withholding for Institutionalized Children’s Programs – Special Classes		8,938.22		8,938.22
<b>Total Other Purchased Services</b>	<b>\$905,973.07</b>	<b>\$2,793,415.90</b>		<b>\$3,699,388.97</b>
<b>600 Supplies</b>				
610 General Supplies	3,471.09	48,129.99		51,601.08
640 Books and Periodicals		18,496.36		18,496.36
650 Supplies & Fees – Technology Related		23,645.75		23,645.75
<b>Total Supplies</b>	<b>\$3,471.09</b>	<b>\$90,272.10</b>		<b>\$93,743.19</b>
<b>700 Property</b>				
750 Equipment – Original and Additional	107.63	16,317.48		16,425.11
<b>Total Property</b>	<b>\$107.63</b>	<b>\$16,317.48</b>		<b>\$16,425.11</b>
<b>Total 1200 Special Programs – Elementary / Secondary</b>	<b>\$8,227,595.15</b>	<b>\$11,718,557.59</b>	<b>\$837,711.67</b>	<b>\$20,783,864.41</b>

**General Fund (10)**

**1210 Life Skills Support**

	<u>Elementary</u>	<u>Secondary</u>	<u>Federal</u>	<u>Total</u>
<b>200 Personnel Services – Employee Benefits</b>				
210 Group Insurance – Contracted Provider	4,412.58			4,412.58
290 Other Current Employee Benefits	10,279.25			10,279.25
<b>Total Personnel Services – Employee Benefits</b>	<b>\$14,691.83</b>			<b>\$14,691.83</b>
<b>500 Other Purchased Services</b>				
561 Tuition To Other School Districts Within the State	17,158.71			17,158.71
562 Tuition To Pennsylvania Charter Schools	69,967.39			69,967.39
563 Tuition To Nonpublic Schools	338,966.94			338,966.94
<b>Total Other Purchased Services</b>	<b>\$426,093.04</b>			<b>\$426,093.04</b>
<b>600 Supplies</b>				
610 General Supplies	3,471.09			3,471.09
<b>Total Supplies</b>	<b>\$3,471.09</b>			<b>\$3,471.09</b>
<b>700 Property</b>				
750 Equipment – Original and Additional	107.63			107.63
<b>Total Property</b>	<b>\$107.63</b>			<b>\$107.63</b>
<b>Total 1210 Life Skills Support</b>	<b>\$444,363.59</b>			<b>\$444,363.59</b>

General Fund (10)

1220 Sensory Support

100 Personnel Services – Salaries

	<u>Elementary</u>	<u>Secondary</u>	<u>Federal</u>	<u>Total</u>
100 Personnel Services – Salaries		664,558.97		664,558.97
<b>Total Personnel Services – Salaries</b>		<b>\$664,558.97</b>		<b>\$664,558.97</b>

200 Personnel Services – Employee Benefits

210 Group Insurance – Contracted Provider		101,897.26		101,897.26
220 Social Security Contributions		48,682.53		48,682.53
230 PSERS Retirement Contributions		178,397.62		178,397.62
290 Other Current Employee Benefits		382.50		382.50
<b>Total Personnel Services – Employee Benefits</b>		<b>\$329,359.91</b>		<b>\$329,359.91</b>

500 Other Purchased Services

580 Travel		46.38		46.38
<b>Total Other Purchased Services</b>		<b>\$46.38</b>		<b>\$46.38</b>
<b>Total 1220 Sensory Support</b>		<b>\$993,965.26</b>		<b>\$993,965.26</b>

**General Fund (10)**

**1240 Academic Support**

	<u>Elementary</u>	<u>Secondary</u>	<u>Federal</u>	<u>Total</u>
<b>100 Personnel Services – Salaries</b>				
100 Personnel Services – Salaries	4,434,203.05	3,724,160.94	27,290.73	8,185,654.72
<b>Total Personnel Services – Salaries</b>	<b>\$4,434,203.05</b>	<b>\$3,724,160.94</b>	<b>\$27,290.73</b>	<b>\$8,185,654.72</b>
<b>200 Personnel Services – Employee Benefits</b>				
210 Group Insurance – Contracted Provider	1,156,722.28	949,378.35	10,104.30	2,116,204.93
220 Social Security Contributions	332,547.35	280,238.91	2,084.70	614,870.96
230 PSERS Retirement Contributions	1,149,689.34	966,105.29	7,209.94	2,123,004.57
240 Tuition Reimbursement	10,217.00	5,396.00		15,613.00
290 Other Current Employee Benefits	12,307.50	1,980.00		14,287.50
<b>Total Personnel Services – Employee Benefits</b>	<b>\$2,661,483.47</b>	<b>\$2,203,098.55</b>	<b>\$19,398.94</b>	<b>\$4,883,980.96</b>
<b>300 Purchased Professional and Technical Services</b>				
330 Other Professional Services		345,981.34	4,000.00	349,981.34
<b>Total Purchased Professional and Technical Services</b>		<b>\$345,981.34</b>	<b>\$4,000.00</b>	<b>\$349,981.34</b>
<b>500 Other Purchased Services</b>				
561 Tuition To Other School Districts Within the State		3,173.04		3,173.04
562 Tuition To Pennsylvania Charter Schools		92,733.91		92,733.91
563 Tuition To Nonpublic Schools		1,004,949.35		1,004,949.35
580 Travel		408.74		408.74
<b>Total Other Purchased Services</b>		<b>\$1,101,265.04</b>		<b>\$1,101,265.04</b>
<b>600 Supplies</b>				
610 General Supplies		48,129.99		48,129.99
640 Books and Periodicals		18,496.36		18,496.36
650 Supplies & Fees – Technology Related		23,645.75		23,645.75
<b>Total Supplies</b>		<b>\$90,272.10</b>		<b>\$90,272.10</b>
<b>700 Property</b>				
750 Equipment – Original and Additional		16,317.48		16,317.48
<b>Total Property</b>		<b>\$16,317.48</b>		<b>\$16,317.48</b>
<b>Total 1240 Academic Support</b>	<b>\$7,095,686.52</b>	<b>\$7,481,095.45</b>	<b>\$50,689.67</b>	<b>\$14,627,471.64</b>

**General Fund (10)**

**1241 Learning Support – Public**

	<u>Elementary</u>	<u>Secondary</u>	<u>Federal</u>	<u>Total</u>
<b>100 Personnel Services – Salaries</b>				
100 Personnel Services – Salaries	3,942,652.05	3,635,795.54	27,290.73	7,605,738.32
<b>Total Personnel Services – Salaries</b>	<b>\$3,942,652.05</b>	<b>\$3,635,795.54</b>	<b>\$27,290.73</b>	<b>\$7,605,738.32</b>
<b>200 Personnel Services – Employee Benefits</b>				
210 Group Insurance – Contracted Provider	1,061,626.61	935,515.90	10,104.30	2,007,246.81
220 Social Security Contributions	295,456.47	273,592.68	2,084.70	571,133.85
230 PSERS Retirement Contributions	1,022,669.83	943,365.21	7,209.94	1,973,244.98
240 Tuition Reimbursement	10,217.00	5,396.00		15,613.00
290 Other Current Employee Benefits		1,980.00		1,980.00
<b>Total Personnel Services – Employee Benefits</b>	<b>\$2,389,969.91</b>	<b>\$2,159,849.79</b>	<b>\$19,398.94</b>	<b>\$4,569,218.64</b>
<b>300 Purchased Professional and Technical Services</b>				
330 Other Professional Services		345,981.34	4,000.00	349,981.34
<b>Total Purchased Professional and Technical Services</b>		<b>\$345,981.34</b>	<b>\$4,000.00</b>	<b>\$349,981.34</b>
<b>500 Other Purchased Services</b>				
561 Tuition To Other School Districts Within the State		3,173.04		3,173.04
562 Tuition To Pennsylvania Charter Schools		92,733.91		92,733.91
563 Tuition To Nonpublic Schools		1,004,949.35		1,004,949.35
580 Travel		408.74		408.74
<b>Total Other Purchased Services</b>		<b>\$1,101,265.04</b>		<b>\$1,101,265.04</b>
<b>600 Supplies</b>				
610 General Supplies		36,805.47		36,805.47
640 Books and Periodicals		18,496.36		18,496.36
650 Supplies & Fees – Technology Related		23,645.75		23,645.75
<b>Total Supplies</b>		<b>\$78,947.58</b>		<b>\$78,947.58</b>
<b>700 Property</b>				
750 Equipment – Original and Additional		16,317.48		16,317.48
<b>Total Property</b>		<b>\$16,317.48</b>		<b>\$16,317.48</b>
<b>Total 1241 Learning Support – Public</b>	<b>\$6,332,621.96</b>	<b>\$7,338,156.77</b>	<b>\$50,689.67</b>	<b>\$13,721,468.40</b>

**General Fund (10)**

**1243 Gifted Support**

**100 Personnel Services – Salaries**

	<u>Elementary</u>	<u>Secondary</u>	<u>Federal</u>	<u>Total</u>
100 Personnel Services – Salaries	491,551.00	88,365.40		579,916.40
<b>Total Personnel Services – Salaries</b>	<b>\$491,551.00</b>	<b>\$88,365.40</b>		<b>\$579,916.40</b>

**200 Personnel Services – Employee Benefits**

210 Group Insurance – Contracted Provider	95,095.67	13,862.45		108,958.12
220 Social Security Contributions	37,090.88	6,646.23		43,737.11
230 PSERS Retirement Contributions	127,019.51	22,740.08		149,759.59
290 Other Current Employee Benefits	12,307.50			12,307.50
<b>Total Personnel Services – Employee Benefits</b>	<b>\$271,513.56</b>	<b>\$43,248.76</b>		<b>\$314,762.32</b>

**600 Supplies**

610 General Supplies		11,324.52		11,324.52
----------------------	--	-----------	--	-----------

<b>Total Supplies</b>		<b>\$11,324.52</b>		<b>\$11,324.52</b>
<b>Total 1243 Gifted Support</b>	<b>\$763,064.56</b>	<b>\$142,938.68</b>		<b>\$906,003.24</b>

General Fund (10)

1280 Early Intervention Support

300 Purchased Professional and Technical Services

322 Professional Educational Services – lus

**Total Purchased Professional and Technical Services**

**Total 1280 Early Intervention Support**

	<u>Elementary</u>	<u>Secondary</u>	<u>Federal</u>	<u>Total</u>
	145,098.91		4,301.00	149,399.91
	<b>\$145,098.91</b>		<b>\$4,301.00</b>	<b>\$149,399.91</b>
	<b>\$145,098.91</b>		<b>\$4,301.00</b>	<b>\$149,399.91</b>

**General Fund (10)**

	<u>Elementary</u>	<u>Secondary</u>	<u>Federal</u>	<u>Total</u>
<b>1290 Special Programs - Other Support</b>				
<b>100 Personnel Services – Salaries</b>				
100 Personnel Services – Salaries	47,483.73	234,354.38		281,838.11
<b>Total Personnel Services – Salaries</b>	<b>\$47,483.73</b>	<b>\$234,354.38</b>		<b>\$281,838.11</b>
<b>200 Personnel Services – Employee Benefits</b>				
210 Group Insurance – Contracted Provider		5,437.62		5,437.62
220 Social Security Contributions	3,443.01	18,101.18		21,544.19
230 PSERS Retirement Contributions	11,639.36	53,078.79		64,718.15
290 Other Current Employee Benefits		4,275.00		4,275.00
<b>Total Personnel Services – Employee Benefits</b>	<b>\$15,082.37</b>	<b>\$80,892.59</b>		<b>\$95,974.96</b>
<b>300 Purchased Professional and Technical Services</b>				
322 Professional Educational Services – Ius		1,236,145.43	782,721.00	2,018,866.43
<b>Total Purchased Professional and Technical Services</b>		<b>\$1,236,145.43</b>	<b>\$782,721.00</b>	<b>\$2,018,866.43</b>
<b>500 Other Purchased Services</b>				
567 Tuition To Approved Private Schools (APS) and PA Chartered Schools for the Deaf and Blind	479,880.03	1,675,657.88		2,155,537.91
568 Tuition To Private Residential Rehabilitative Institutions (PRRI) [In-State] and Detention Centers		7,508.38		7,508.38
594 IU Payment By Withholding for Institutionalized Children’s Programs – Special Classes		8,938.22		8,938.22
<b>Total Other Purchased Services</b>	<b>\$479,880.03</b>	<b>\$1,692,104.48</b>		<b>\$2,171,984.51</b>
<b>Total 1290 Special Programs - Other Support</b>	<b>\$542,446.13</b>	<b>\$3,243,496.88</b>	<b>\$782,721.00</b>	<b>\$4,568,664.01</b>



General Fund (10)

1300 Vocational Education

500 Other Purchased Services

564 Tuition To Career and Technology Centers

Total Other Purchased Services

Total 1300 Vocational Education

Elementary

Secondary

Federal

Total

463,408.24

463,408.24

\$463,408.24

\$463,408.24

\$463,408.24

\$463,408.24

**General Fund (10)**

	<u>Elementary</u>	<u>Secondary</u>	<u>Federal</u>	<u>Total</u>
<b>1400 Other Instructional Programs – Elementary / Secondary</b>				
<b>100 Personnel Services – Salaries</b>				
100 Personnel Services – Salaries	64,381.89	299,325.94		363,707.83
<b>Total Personnel Services – Salaries</b>	<b>\$64,381.89</b>	<b>\$299,325.94</b>		<b>\$363,707.83</b>
<b>200 Personnel Services – Employee Benefits</b>				
210 Group Insurance – Contracted Provider	9,696.40	23,559.21		33,255.61
220 Social Security Contributions	4,879.40	22,596.97		27,476.37
230 PSERS Retirement Contributions	16,094.67	70,957.58		87,052.25
<b>Total Personnel Services – Employee Benefits</b>	<b>\$30,670.47</b>	<b>\$117,113.76</b>		<b>\$147,784.23</b>
<b>300 Purchased Professional and Technical Services</b>				
322 Professional Educational Services – Ius		39,936.73		39,936.73
<b>Total Purchased Professional and Technical Services</b>		<b>\$39,936.73</b>		<b>\$39,936.73</b>
<b>500 Other Purchased Services</b>				
580 Travel		6.84		6.84
<b>Total Other Purchased Services</b>		<b>\$6.84</b>		<b>\$6.84</b>
<b>600 Supplies</b>				
610 General Supplies	3,112.34	796.04		3,908.38
640 Books and Periodicals	32.10			32.10
650 Supplies & Fees – Technology Related		37,758.75		37,758.75
<b>Total Supplies</b>	<b>\$3,144.44</b>	<b>\$38,554.79</b>		<b>\$41,699.23</b>
<b>700 Property</b>				
750 Equipment – Original and Additional		10,560.20		10,560.20
<b>Total Property</b>		<b>\$10,560.20</b>		<b>\$10,560.20</b>
<b>Total 1400 Other Instructional Programs – Elementary / Secondary</b>	<b>\$98,196.80</b>	<b>\$505,498.26</b>		<b>\$603,695.06</b>

**General Fund (10)**

**1420 Summer School**

**100 Personnel Services – Salaries**

	<u>Elementary</u>	<u>Secondary</u>	<u>Federal</u>	<u>Total</u>
100 Personnel Services – Salaries	19,775.78	8,200.00		27,975.78
<b>Total Personnel Services – Salaries</b>	<b>\$19,775.78</b>	<b>\$8,200.00</b>		<b>\$27,975.78</b>

**200 Personnel Services – Employee Benefits**

220 Social Security Contributions	1,566.95	627.33		2,194.28
230 PSERS Retirement Contributions	4,568.41	2,118.88		6,687.29
<b>Total Personnel Services – Employee Benefits</b>	<b>\$6,135.36</b>	<b>\$2,746.21</b>		<b>\$8,881.57</b>

**600 Supplies**

610 General Supplies	3,112.34			3,112.34
<b>Total Supplies</b>	<b>\$3,112.34</b>			<b>\$3,112.34</b>

**Total 1420 Summer School**

	<b>\$29,023.48</b>	<b>\$10,946.21</b>		<b>\$39,969.69</b>
--	--------------------	--------------------	--	--------------------

General Fund (10)

1430 Homebound Instruction

100 Personnel Services – Salaries

	<u>Elementary</u>	<u>Secondary</u>	<u>Federal</u>	<u>Total</u>
100 Personnel Services – Salaries		48,697.73		48,697.73
<b>Total Personnel Services – Salaries</b>		<b>\$48,697.73</b>		<b>\$48,697.73</b>

200 Personnel Services – Employee Benefits

210 Group Insurance – Contracted Provider		21.21		21.21
220 Social Security Contributions		3,710.61		3,710.61
230 PSERS Retirement Contributions		8,128.60		8,128.60
<b>Total Personnel Services – Employee Benefits</b>		<b>\$11,860.42</b>		<b>\$11,860.42</b>

300 Purchased Professional and Technical Services

322 Professional Educational Services – Ius		39,936.73		39,936.73
<b>Total Purchased Professional and Technical Services</b>		<b>\$39,936.73</b>		<b>\$39,936.73</b>
<b>Total 1430 Homebound Instruction</b>		<b>\$100,494.88</b>		<b>\$100,494.88</b>

**General Fund (10)**

	<u>Elementary</u>	<u>Secondary</u>	<u>Federal</u>	<u>Total</u>
<b>1440 Alternative Regular Education Programs</b>				
<b>100 Personnel Services – Salaries</b>				
100 Personnel Services – Salaries		71,969.28		71,969.28
<b>Total Personnel Services – Salaries</b>		<b>\$71,969.28</b>		<b>\$71,969.28</b>
<b>200 Personnel Services – Employee Benefits</b>				
220 Social Security Contributions		5,433.98		5,433.98
230 PSERS Retirement Contributions		16,663.41		16,663.41
<b>Total Personnel Services – Employee Benefits</b>		<b>\$22,097.39</b>		<b>\$22,097.39</b>
<b>600 Supplies</b>				
610 General Supplies		671.10		671.10
650 Supplies & Fees – Technology Related		37,758.75		37,758.75
<b>Total Supplies</b>		<b>\$38,429.85</b>		<b>\$38,429.85</b>
<b>Total 1440 Alternative Regular Education Programs</b>		<b>\$132,496.52</b>		<b>\$132,496.52</b>

General Fund (10)

1442 Alternative Education Programs

100 Personnel Services – Salaries

	<u>Elementary</u>	<u>Secondary</u>	<u>Federal</u>	<u>Total</u>
100 Personnel Services – Salaries		71,969.28		71,969.28
<b>Total Personnel Services – Salaries</b>		<b>\$71,969.28</b>		<b>\$71,969.28</b>
<b>200 Personnel Services – Employee Benefits</b>				
220 Social Security Contributions		5,433.98		5,433.98
230 PSERS Retirement Contributions		16,663.41		16,663.41
<b>Total Personnel Services – Employee Benefits</b>		<b>\$22,097.39</b>		<b>\$22,097.39</b>
<b>600 Supplies</b>				
610 General Supplies		671.10		671.10
650 Supplies & Fees – Technology Related		37,758.75		37,758.75
<b>Total Supplies</b>		<b>\$38,429.85</b>		<b>\$38,429.85</b>
<b>Total 1442 Alternative Education Programs</b>		<b>\$132,496.52</b>		<b>\$132,496.52</b>

**Total Personnel Services – Salaries**

**200 Personnel Services – Employee Benefits**

**600 Supplies**

**Total 1442 Alternative Education Programs**

General Fund (10)

	<u>Elementary</u>	<u>Secondary</u>	<u>Federal</u>	<u>Total</u>
<b>1450 Instructional Programs Outside the Established School Day</b>				
<b>100 Personnel Services – Salaries</b>				
100 Personnel Services – Salaries	2,654.11	2,650.93		5,305.04
<b>Total Personnel Services – Salaries</b>	<b>\$2,654.11</b>	<b>\$2,650.93</b>		<b>\$5,305.04</b>
<b>200 Personnel Services – Employee Benefits</b>				
220 Social Security Contributions	190.13	197.01		387.14
230 PSERS Retirement Contributions	685.84	684.99		1,370.83
<b>Total Personnel Services – Employee Benefits</b>	<b>\$875.97</b>	<b>\$882.00</b>		<b>\$1,757.97</b>
<b>Total 1450 Instructional Programs Outside the Established School Day</b>	<b>\$3,530.08</b>	<b>\$3,532.93</b>		<b>\$7,063.01</b>

**General Fund (10)**

	<u>Elementary</u>	<u>Secondary</u>	<u>Federal</u>	<u>Total</u>
<b>1490 Additional Other Instructional Programs</b>				
<b>100 Personnel Services – Salaries</b>				
100 Personnel Services – Salaries	41,952.00	167,808.00		209,760.00
<b>Total Personnel Services – Salaries</b>	<b>\$41,952.00</b>	<b>\$167,808.00</b>		<b>\$209,760.00</b>
<b>200 Personnel Services – Employee Benefits</b>				
210 Group Insurance – Contracted Provider	9,696.40	23,538.00		33,234.40
220 Social Security Contributions	3,122.32	12,628.04		15,750.36
230 PSERS Retirement Contributions	10,840.42	43,361.70		54,202.12
<b>Total Personnel Services – Employee Benefits</b>	<b>\$23,659.14</b>	<b>\$79,527.74</b>		<b>\$103,186.88</b>
<b>500 Other Purchased Services</b>				
580 Travel		6.84		6.84
<b>Total Other Purchased Services</b>		<b>\$6.84</b>		<b>\$6.84</b>
<b>600 Supplies</b>				
610 General Supplies		124.94		124.94
640 Books and Periodicals	32.10			32.10
<b>Total Supplies</b>	<b>\$32.10</b>	<b>\$124.94</b>		<b>\$157.04</b>
<b>700 Property</b>				
750 Equipment – Original and Additional		10,560.20		10,560.20
<b>Total Property</b>		<b>\$10,560.20</b>		<b>\$10,560.20</b>
<b>Total 1490 Additional Other Instructional Programs</b>	<b>\$65,643.24</b>	<b>\$258,027.72</b>		<b>\$323,670.96</b>



General Fund (10)

1700 Higher Education Programs

Elementary

Secondary

Federal

Total

500 Other Purchased Services

566 Tuition To Institutions of Higher Education and Technical Institutes

1,250,790.00

**Total Other Purchased Services**

**\$1,250,790.00**

**Total 1700 Higher Education Programs**

**\$1,250,790.00**

General Fund (10)

2000 Support Services

Total

100 Personnel Services – Salaries

100 Personnel Services – Salaries 15,570,136.96

Total Personnel Services – Salaries \$15,570,136.96

200 Personnel Services – Employee Benefits

210 Group Insurance – Contracted Provider 3,286,535.32

220 Social Security Contributions 1,150,972.83

230 PSERS Retirement Contributions 4,026,000.99

240 Tuition Reimbursement 33,445.00

250 Unemployment Compensation 1,946.53

290 Other Current Employee Benefits 59,680.31

Total Personnel Services – Employee Benefits \$8,558,580.98

300 Purchased Professional and Technical Services

324 Professional Educational Services – Employee Training and Development Services 16,631.13

330 Other Professional Services 894,344.54

340 Technical Services 4,294.54

Total Purchased Professional and Technical Services \$915,270.21

400 Purchased Property Services

410 Cleaning Services 36,827.12

420 Utility Services 1,218,710.24

430 Repairs and Maintenance Services 935,885.16

440 Rentals 739,031.69

Total Purchased Property Services \$2,930,454.21

500 Other Purchased Services

513 Contracted Carriers 23,529.26

516 Student Transportation Services From the IU 23,970.91

520 Insurance – General 131,628.00

522 Automotive Liability Insurance 100,281.00

523 General Property and Liability Insurance 255,009.00

530 Communications 179,166.01

549 Other Advertising/Public Relations 5,841.48

550 Printing and Binding 18,312.45

580 Travel 22,274.82

595 IU Payments By Withholding 111,831.31

599 Other Miscellaneous Purchased Services 1,874.00

Total Other Purchased Services \$873,718.24

600 Supplies

610 General Supplies 805,879.38

620 Energy 444,176.44

630 Food 26,345.12

640 Books and Periodicals 102,588.88

650 Supplies & Fees – Technology Related 44,515.36

Total Supplies \$1,423,505.18

**General Fund (10)**

**2000 Support Services**

**Total**

**700 Property**

750 Equipment – Original and Additional

281,848.46

760 Equipment – Replacement

91,155.10

**Total Property**

**\$373,003.56**

**800 Other Objects**

810 Dues and Fees

82,611.91

890 Miscellaneous Expenditures

11,516.48

**Total Other Objects**

**\$94,128.39**

**Total 2000 Support Services**

**\$30,738,797.73**

**General Fund (10)**

**2100 Support Services – Students**

	<u>Elementary</u>	<u>Secondary</u>	<u>Federal</u>	<u>Total</u>
<b>100 Personnel Services – Salaries</b>				
100 Personnel Services – Salaries	784,600.00	2,160,078.38	18,977.85	3,160,837.88
<b>Total Personnel Services – Salaries</b>	<b>\$784,600.00</b>	<b>\$2,160,078.38</b>	<b>\$18,977.85</b>	<b>\$3,160,837.88</b>
<b>200 Personnel Services – Employee Benefits</b>				
210 Group Insurance – Contracted Provider	114,355.85	504,275.55	2,236.46	669,149.19
220 Social Security Contributions	59,238.62	155,470.98	1,622.83	231,242.23
230 PSERS Retirement Contributions	202,740.87	557,300.30	4,903.92	815,896.87
240 Tuition Reimbursement		12,012.00		12,012.00
290 Other Current Employee Benefits		14,801.24		14,801.24
<b>Total Personnel Services – Employee Benefits</b>	<b>\$376,335.34</b>	<b>\$1,243,860.07</b>	<b>\$8,763.21</b>	<b>\$1,743,101.53</b>
<b>300 Purchased Professional and Technical Services</b>				
330 Other Professional Services		55,103.20		55,103.20
<b>Total Purchased Professional and Technical Services</b>		<b>\$55,103.20</b>		<b>\$55,103.20</b>
<b>400 Purchased Property Services</b>				
430 Repairs and Maintenance Services		1,040.60		1,040.60
440 Rentals		2,024.64		2,024.64
<b>Total Purchased Property Services</b>		<b>\$3,065.24</b>		<b>\$3,065.24</b>
<b>500 Other Purchased Services</b>				
530 Communications		452.14		452.14
550 Printing and Binding		125.00		125.00
580 Travel		6,428.21		6,710.45
<b>Total Other Purchased Services</b>		<b>\$7,005.35</b>		<b>\$7,287.59</b>
<b>600 Supplies</b>				
610 General Supplies		42,274.41		42,274.41
630 Food		180.00		180.00
640 Books and Periodicals	155.89			155.89
<b>Total Supplies</b>	<b>\$155.89</b>	<b>\$42,454.41</b>		<b>\$42,610.30</b>
<b>700 Property</b>				
750 Equipment – Original and Additional		16,736.16		16,736.16
760 Equipment – Replacement		2,025.86		2,025.86
<b>Total Property</b>		<b>\$18,762.02</b>		<b>\$18,762.02</b>
<b>800 Other Objects</b>				
810 Dues and Fees		2,240.00		2,240.00
<b>Total Other Objects</b>		<b>\$2,240.00</b>		<b>\$2,240.00</b>
<b>Total 2100 Support Services – Students</b>	<b>\$1,161,091.23</b>	<b>\$3,532,568.67</b>	<b>\$27,741.06</b>	<b>\$5,033,007.76</b>

**General Fund (10)**

	<u>Elementary</u>	<u>Secondary</u>	<u>Federal</u>	<u>Total</u>
<b>2110 Supervision of Student Services</b>				
<b>100 Personnel Services – Salaries</b>				
100 Personnel Services – Salaries		702,869.00		702,869.00
<b>Total Personnel Services – Salaries</b>		<b>\$702,869.00</b>		<b>\$702,869.00</b>
<b>200 Personnel Services – Employee Benefits</b>				
210 Group Insurance – Contracted Provider		131,979.21		131,979.21
220 Social Security Contributions		47,271.61		47,271.61
230 PSERS Retirement Contributions		180,752.88		180,752.88
240 Tuition Reimbursement		12,012.00		12,012.00
290 Other Current Employee Benefits		6,678.74		6,678.74
<b>Total Personnel Services – Employee Benefits</b>		<b>\$378,694.44</b>		<b>\$378,694.44</b>
<b>300 Purchased Professional and Technical Services</b>				
330 Other Professional Services		8,915.00		8,915.00
<b>Total Purchased Professional and Technical Services</b>		<b>\$8,915.00</b>		<b>\$8,915.00</b>
<b>400 Purchased Property Services</b>				
430 Repairs and Maintenance Services		1,040.60		1,040.60
440 Rentals		2,024.64		2,024.64
<b>Total Purchased Property Services</b>		<b>\$3,065.24</b>		<b>\$3,065.24</b>
<b>500 Other Purchased Services</b>				
530 Communications		452.14		452.14
550 Printing and Binding		125.00		125.00
580 Travel		5,680.55		5,680.55
<b>Total Other Purchased Services</b>		<b>\$6,257.69</b>		<b>\$6,257.69</b>
<b>600 Supplies</b>				
610 General Supplies		6,807.83		6,807.83
630 Food		180.00		180.00
<b>Total Supplies</b>		<b>\$6,987.83</b>		<b>\$6,987.83</b>
<b>700 Property</b>				
760 Equipment – Replacement		2,025.86		2,025.86
<b>Total Property</b>		<b>\$2,025.86</b>		<b>\$2,025.86</b>
<b>800 Other Objects</b>				
810 Dues and Fees		1,370.00		1,370.00
<b>Total Other Objects</b>		<b>\$1,370.00</b>		<b>\$1,370.00</b>
<b>Total 2110 Supervision of Student Services</b>		<b>\$1,110,185.06</b>		<b>\$1,110,185.06</b>

**General Fund (10)**

	<u>Elementary</u>	<u>Secondary</u>	<u>Federal</u>	<u>Total</u>
<b>2111 Supervision of Student Services – Head of Component</b>				
<b>100 Personnel Services – Salaries</b>				
100 Personnel Services – Salaries		702,869.00		702,869.00
<b>Total Personnel Services – Salaries</b>		<b>\$702,869.00</b>		<b>\$702,869.00</b>
<b>200 Personnel Services – Employee Benefits</b>				
210 Group Insurance – Contracted Provider		131,979.21		131,979.21
220 Social Security Contributions		47,271.61		47,271.61
230 PSERS Retirement Contributions		180,752.88		180,752.88
240 Tuition Reimbursement		12,012.00		12,012.00
290 Other Current Employee Benefits		6,678.74		6,678.74
<b>Total Personnel Services – Employee Benefits</b>		<b>\$378,694.44</b>		<b>\$378,694.44</b>
<b>300 Purchased Professional and Technical Services</b>				
330 Other Professional Services		8,915.00		8,915.00
<b>Total Purchased Professional and Technical Services</b>		<b>\$8,915.00</b>		<b>\$8,915.00</b>
<b>400 Purchased Property Services</b>				
430 Repairs and Maintenance Services		1,040.60		1,040.60
440 Rentals		2,024.64		2,024.64
<b>Total Purchased Property Services</b>		<b>\$3,065.24</b>		<b>\$3,065.24</b>
<b>500 Other Purchased Services</b>				
530 Communications		452.14		452.14
550 Printing and Binding		125.00		125.00
580 Travel		5,680.55		5,680.55
<b>Total Other Purchased Services</b>		<b>\$6,257.69</b>		<b>\$6,257.69</b>
<b>600 Supplies</b>				
610 General Supplies		6,807.83		6,807.83
630 Food		180.00		180.00
<b>Total Supplies</b>		<b>\$6,987.83</b>		<b>\$6,987.83</b>
<b>700 Property</b>				
760 Equipment – Replacement		2,025.86		2,025.86
<b>Total Property</b>		<b>\$2,025.86</b>		<b>\$2,025.86</b>
<b>800 Other Objects</b>				
810 Dues and Fees		1,370.00		1,370.00
<b>Total Other Objects</b>		<b>\$1,370.00</b>		<b>\$1,370.00</b>
<b>Total 2111 Supervision of Student Services – Head of Component</b>		<b>\$1,110,185.06</b>		<b>\$1,110,185.06</b>

General Fund (10)

	<u>Elementary</u>	<u>Secondary</u>	<u>Federal</u>	<u>Total</u>
<b>2120 Guidance Services</b>				
<b>100 Personnel Services – Salaries</b>				
100 Personnel Services – Salaries	784,600.00	854,206.12		1,638,806.12
<b>Total Personnel Services – Salaries</b>	<b>\$784,600.00</b>	<b>\$854,206.12</b>		<b>\$1,638,806.12</b>
<b>200 Personnel Services – Employee Benefits</b>				
210 Group Insurance – Contracted Provider	114,355.85	205,414.02		319,769.87
220 Social Security Contributions	59,238.62	63,410.98		122,649.60
230 PSERS Retirement Contributions	202,740.87	220,731.59		423,472.46
<b>Total Personnel Services – Employee Benefits</b>	<b>\$376,335.34</b>	<b>\$489,556.59</b>		<b>\$865,891.93</b>
<b>300 Purchased Professional and Technical Services</b>				
330 Other Professional Services		5,770.00		5,770.00
<b>Total Purchased Professional and Technical Services</b>		<b>\$5,770.00</b>		<b>\$5,770.00</b>
<b>600 Supplies</b>				
610 General Supplies		1,585.01		1,585.01
640 Books and Periodicals	155.89			155.89
<b>Total Supplies</b>	<b>\$155.89</b>	<b>\$1,585.01</b>		<b>\$1,740.90</b>
<b>700 Property</b>				
750 Equipment – Original and Additional		7,623.00		7,623.00
<b>Total Property</b>		<b>\$7,623.00</b>		<b>\$7,623.00</b>
<b>800 Other Objects</b>				
810 Dues and Fees		870.00		870.00
<b>Total Other Objects</b>		<b>\$870.00</b>		<b>\$870.00</b>
<b>Total 2120 Guidance Services</b>	<b>\$1,161,091.23</b>	<b>\$1,359,610.72</b>		<b>\$2,520,701.95</b>

General Fund (10)

2140 Psychological Services

100 Personnel Services – Salaries

	<u>Elementary</u>	<u>Secondary</u>	<u>Federal</u>	<u>Total</u>
100 Personnel Services – Salaries		603,003.26		603,003.26
<b>Total Personnel Services – Salaries</b>		<b>\$603,003.26</b>		<b>\$603,003.26</b>

200 Personnel Services – Employee Benefits

210 Group Insurance – Contracted Provider		166,882.32		166,882.32
220 Social Security Contributions		44,788.39		44,788.39
230 PSERS Retirement Contributions		155,815.83		155,815.83
290 Other Current Employee Benefits		8,122.50		8,122.50
<b>Total Personnel Services – Employee Benefits</b>		<b>\$375,609.04</b>		<b>\$375,609.04</b>

300 Purchased Professional and Technical Services

330 Other Professional Services		40,418.20		40,418.20
<b>Total Purchased Professional and Technical Services</b>		<b>\$40,418.20</b>		<b>\$40,418.20</b>

500 Other Purchased Services

580 Travel		747.66		747.66
<b>Total Other Purchased Services</b>		<b>\$747.66</b>		<b>\$747.66</b>

600 Supplies

610 General Supplies		33,881.57		33,881.57
<b>Total Supplies</b>		<b>\$33,881.57</b>		<b>\$33,881.57</b>

700 Property

750 Equipment – Original and Additional		9,113.16		9,113.16
<b>Total Property</b>		<b>\$9,113.16</b>		<b>\$9,113.16</b>

<b>Total 2140 Psychological Services</b>		<b>\$1,062,772.89</b>		<b>\$1,062,772.89</b>
--	--	-----------------------	--	-----------------------



General Fund (10)

2160 Social Work Services

Elementary

Secondary

Federal

Total

100 Personnel Services – Salaries

100 Personnel Services – Salaries

177,970.00

**Total Personnel Services – Salaries**

**\$177,970.00**

200 Personnel Services – Employee Benefits

210 Group Insurance – Contracted Provider

46,045.12

220 Social Security Contributions

13,269.05

230 PSERS Retirement Contributions

45,987.50

**Total Personnel Services – Employee Benefits**

**\$105,301.67**

500 Other Purchased Services

580 Travel

282.24

**Total Other Purchased Services**

**\$282.24**

**Total 2160 Social Work Services**

**\$283,553.91**

General Fund (10)

2170 Student Accounting Services

	<u>Elementary</u>	<u>Secondary</u>	<u>Federal</u>	<u>Total</u>
<b>100 Personnel Services – Salaries</b>				
100 Personnel Services – Salaries			18,977.85	38,189.50
<b>Total Personnel Services – Salaries</b>			<b>\$18,977.85</b>	<b>\$38,189.50</b>
<b>200 Personnel Services – Employee Benefits</b>				
210 Group Insurance – Contracted Provider			2,236.46	4,472.67
220 Social Security Contributions			1,622.83	3,263.58
230 PSERS Retirement Contributions			4,903.92	9,868.20
<b>Total Personnel Services – Employee Benefits</b>			<b>\$8,763.21</b>	<b>\$17,604.45</b>
<b>Total 2170 Student Accounting Services</b>			<b>\$27,741.06</b>	<b>\$55,793.95</b>

**General Fund (10)**

	<u>Elementary</u>	<u>Secondary</u>	<u>Federal</u>	<u>Total</u>
<b>2200 Support Services – Instructional Staff</b>				
<b>100 Personnel Services – Salaries</b>				
100 Personnel Services – Salaries	911,868.31	1,055,263.31		1,967,131.62
<b>Total Personnel Services – Salaries</b>	<b>\$911,868.31</b>	<b>\$1,055,263.31</b>		<b>\$1,967,131.62</b>
<b>200 Personnel Services – Employee Benefits</b>				
210 Group Insurance – Contracted Provider	176,282.34	237,002.49		413,284.83
220 Social Security Contributions	68,691.28	77,905.24		146,596.52
230 PSERS Retirement Contributions	234,149.37	265,747.23		499,896.60
290 Other Current Employee Benefits	999.96	6,116.84		7,116.80
<b>Total Personnel Services – Employee Benefits</b>	<b>\$480,122.95</b>	<b>\$586,771.80</b>		<b>\$1,066,894.75</b>
<b>300 Purchased Professional and Technical Services</b>				
324 Professional Educational Services – Employee Training and Development Services	83.72	8,380.44	4,101.97	12,566.13
330 Other Professional Services		41,288.39		41,288.39
<b>Total Purchased Professional and Technical Services</b>	<b>\$83.72</b>	<b>\$49,668.83</b>	<b>\$4,101.97</b>	<b>\$53,854.52</b>
<b>400 Purchased Property Services</b>				
430 Repairs and Maintenance Services		40,882.72		40,882.72
440 Rentals		2,804.72		2,804.72
<b>Total Purchased Property Services</b>		<b>\$43,687.44</b>		<b>\$43,687.44</b>
<b>500 Other Purchased Services</b>				
530 Communications		12.35		12.35
580 Travel		5,384.30		5,384.30
599 Other Miscellaneous Purchased Services		999.00		999.00
<b>Total Other Purchased Services</b>		<b>\$6,395.65</b>		<b>\$6,395.65</b>
<b>600 Supplies</b>				
610 General Supplies	14,894.11	54,614.12		69,508.23
630 Food		7,929.76		7,929.76
640 Books and Periodicals	63,919.22	34,939.91		98,859.13
<b>Total Supplies</b>	<b>\$78,813.33</b>	<b>\$97,483.79</b>		<b>\$176,297.12</b>
<b>700 Property</b>				
750 Equipment – Original and Additional	14,529.38	23,485.13		38,014.51
<b>Total Property</b>	<b>\$14,529.38</b>	<b>\$23,485.13</b>		<b>\$38,014.51</b>
<b>800 Other Objects</b>				
810 Dues and Fees	372.94	1,575.00		1,947.94
<b>Total Other Objects</b>	<b>\$372.94</b>	<b>\$1,575.00</b>		<b>\$1,947.94</b>
<b>Total 2200 Support Services – Instructional Staff</b>	<b>\$1,485,790.63</b>	<b>\$1,864,330.95</b>	<b>\$4,101.97</b>	<b>\$3,354,223.55</b>

**General Fund (10)**

**2220 Technology Support Services**

**100 Personnel Services – Salaries**

	<u>Elementary</u>	<u>Secondary</u>	<u>Federal</u>	<u>Total</u>
100 Personnel Services – Salaries		398,392.24		398,392.24
<b>Total Personnel Services – Salaries</b>		<b>\$398,392.24</b>		<b>\$398,392.24</b>

**200 Personnel Services – Employee Benefits**

210 Group Insurance – Contracted Provider		93,698.66		93,698.66
220 Social Security Contributions		28,899.92		28,899.92
230 PSERS Retirement Contributions		99,814.63		99,814.63
290 Other Current Employee Benefits		5,616.86		5,616.86
<b>Total Personnel Services – Employee Benefits</b>		<b>\$228,030.07</b>		<b>\$228,030.07</b>

**400 Purchased Property Services**

430 Repairs and Maintenance Services		40,017.62		40,017.62
<b>Total Purchased Property Services</b>		<b>\$40,017.62</b>		<b>\$40,017.62</b>

**600 Supplies**

610 General Supplies	13,736.89	38,527.06		52,263.95
<b>Total Supplies</b>	<b>\$13,736.89</b>	<b>\$38,527.06</b>		<b>\$52,263.95</b>

**700 Property**

750 Equipment – Original and Additional	14,529.38	20,849.14		35,378.52
<b>Total Property</b>	<b>\$14,529.38</b>	<b>\$20,849.14</b>		<b>\$35,378.52</b>

**800 Other Objects**

810 Dues and Fees		50.00		50.00
<b>Total Other Objects</b>		<b>\$50.00</b>		<b>\$50.00</b>

**Total 2220 Technology Support Services**

	<b>\$28,266.27</b>	<b>\$725,866.13</b>		<b>\$754,132.40</b>
--	--------------------	---------------------	--	---------------------

**General Fund (10)**

**2240 Computer-Assisted Instruction Support Services**

	<u>Elementary</u>	<u>Secondary</u>	<u>Federal</u>	<u>Total</u>
<b>100 Personnel Services – Salaries</b>				
100 Personnel Services – Salaries	155,834.22	102,286.98		258,121.20
<b>Total Personnel Services – Salaries</b>	<b>\$155,834.22</b>	<b>\$102,286.98</b>		<b>\$258,121.20</b>
<b>200 Personnel Services – Employee Benefits</b>				
210 Group Insurance – Contracted Provider	72,128.44	48,480.06		120,608.50
220 Social Security Contributions	11,328.00	7,440.25		18,768.25
230 PSERS Retirement Contributions	38,789.99	26,430.97		65,220.96
<b>Total Personnel Services – Employee Benefits</b>	<b>\$122,246.43</b>	<b>\$82,351.28</b>		<b>\$204,597.71</b>
<b>600 Supplies</b>				
610 General Supplies		10,158.00		10,158.00
<b>Total Supplies</b>		<b>\$10,158.00</b>		<b>\$10,158.00</b>
<b>Total 2240 Computer-Assisted Instruction Support Services</b>	<b>\$278,080.65</b>	<b>\$194,796.26</b>		<b>\$472,876.91</b>

**General Fund (10)**

<b>2250 School Library Services</b>	<u>Elementary</u>	<u>Secondary</u>	<u>Federal</u>	<u>Total</u>
<b>100 Personnel Services – Salaries</b>				
100 Personnel Services – Salaries	523,848.09	191,770.38		715,618.47
<b>Total Personnel Services – Salaries</b>	<b>\$523,848.09</b>	<b>\$191,770.38</b>		<b>\$715,618.47</b>
<b>200 Personnel Services – Employee Benefits</b>				
210 Group Insurance – Contracted Provider	63,305.90	44,848.86		108,154.76
220 Social Security Contributions	39,913.22	14,338.43		54,251.65
230 PSERS Retirement Contributions	135,362.56	49,568.56		184,931.12
<b>Total Personnel Services – Employee Benefits</b>	<b>\$238,581.68</b>	<b>\$108,755.85</b>		<b>\$347,337.53</b>
<b>600 Supplies</b>				
610 General Supplies	1,157.22	2,004.36		3,161.58
640 Books and Periodicals	63,058.07	29,845.78		92,903.85
<b>Total Supplies</b>	<b>\$64,215.29</b>	<b>\$31,850.14</b>		<b>\$96,065.43</b>
<b>Total 2250 School Library Services</b>	<b>\$826,645.06</b>	<b>\$332,376.37</b>		<b>\$1,159,021.43</b>

**General Fund (10)**

**2260 Instruction and Curriculum Development Services**

	<u>Elementary</u>	<u>Secondary</u>	<u>Federal</u>	<u>Total</u>
<b>100 Personnel Services – Salaries</b>				
100 Personnel Services – Salaries	232,186.00	362,813.71		594,999.71
<b>Total Personnel Services – Salaries</b>	<b>\$232,186.00</b>	<b>\$362,813.71</b>		<b>\$594,999.71</b>
<b>200 Personnel Services – Employee Benefits</b>				
210 Group Insurance – Contracted Provider	40,848.00	49,974.91		90,822.91
220 Social Security Contributions	17,450.06	27,226.64		44,676.70
230 PSERS Retirement Contributions	59,996.82	89,933.07		149,929.89
290 Other Current Employee Benefits	999.96	499.98		1,499.94
<b>Total Personnel Services – Employee Benefits</b>	<b>\$119,294.84</b>	<b>\$167,634.60</b>		<b>\$286,929.44</b>
<b>300 Purchased Professional and Technical Services</b>				
324 Professional Educational Services – Employee Training and Development Services		1,490.94		1,490.94
330 Other Professional Services		8,624.98		8,624.98
<b>Total Purchased Professional and Technical Services</b>		<b>\$10,115.92</b>		<b>\$10,115.92</b>
<b>400 Purchased Property Services</b>				
430 Repairs and Maintenance Services		865.10		865.10
440 Rentals		2,804.72		2,804.72
<b>Total Purchased Property Services</b>		<b>\$3,669.82</b>		<b>\$3,669.82</b>
<b>500 Other Purchased Services</b>				
530 Communications		12.35		12.35
580 Travel		2,528.53		2,528.53
599 Other Miscellaneous Purchased Services		999.00		999.00
<b>Total Other Purchased Services</b>		<b>\$3,539.88</b>		<b>\$3,539.88</b>
<b>600 Supplies</b>				
610 General Supplies		2,551.34		2,551.34
630 Food		214.76		214.76
640 Books and Periodicals		2,970.00		2,970.00
<b>Total Supplies</b>		<b>\$5,736.10</b>		<b>\$5,736.10</b>
<b>700 Property</b>				
750 Equipment – Original and Additional		2,635.99		2,635.99
<b>Total Property</b>		<b>\$2,635.99</b>		<b>\$2,635.99</b>
<b>800 Other Objects</b>				
810 Dues and Fees	372.94	1,525.00		1,897.94
<b>Total Other Objects</b>	<b>\$372.94</b>	<b>\$1,525.00</b>		<b>\$1,897.94</b>
<b>Total 2260 Instruction and Curriculum Development Services</b>	<b>\$351,853.78</b>	<b>\$557,671.02</b>		<b>\$909,524.80</b>

**General Fund (10)**

	<u>Elementary</u>	<u>Secondary</u>	<u>Federal</u>	<u>Total</u>
<b>2270 Instructional Staff Professional Development Services</b>				
<b>300 <u>Purchased Professional and Technical Services</u></b>				
324 Professional Educational Services – Employee Training and Development Services	83.72	6,889.50	4,101.97	11,075.19
330 Other Professional Services		32,663.41		32,663.41
<b>Total Purchased Professional and Technical Services</b>	<b>\$83.72</b>	<b>\$39,552.91</b>	<b>\$4,101.97</b>	<b>\$43,738.60</b>
<b>500 <u>Other Purchased Services</u></b>				
580 Travel		2,855.77		2,855.77
<b>Total Other Purchased Services</b>		<b>\$2,855.77</b>		<b>\$2,855.77</b>
<b>600 <u>Supplies</u></b>				
610 General Supplies		1,373.36		1,373.36
630 Food		7,715.00		7,715.00
640 Books and Periodicals	861.15	2,124.13		2,985.28
<b>Total Supplies</b>	<b>\$861.15</b>	<b>\$11,212.49</b>		<b>\$12,073.64</b>
<b>Total 2270 Instructional Staff Professional Development Services</b>	<b>\$944.87</b>	<b>\$53,621.17</b>	<b>\$4,101.97</b>	<b>\$58,668.01</b>



**General Fund (10)**

	<u>Elementary</u>	<u>Secondary</u>	<u>Federal</u>	<u>Total</u>
<b>2300 Support Services – Administration</b>				
<b>100 Personnel Services – Salaries</b>				
100 Personnel Services – Salaries	1,098,049.46	1,181,317.43		2,661,477.52
<b>Total Personnel Services – Salaries</b>	<b>\$1,098,049.46</b>	<b>\$1,181,317.43</b>		<b>\$2,661,477.52</b>
<b>200 Personnel Services – Employee Benefits</b>				
210 Group Insurance – Contracted Provider	233,546.96	221,692.67		559,293.19
220 Social Security Contributions	77,330.98	83,941.50		189,394.89
230 PSERS Retirement Contributions	283,736.20	301,844.33		683,366.22
240 Tuition Reimbursement	20,683.00			20,683.00
290 Other Current Employee Benefits	7,600.46	7,899.04		19,192.54
<b>Total Personnel Services – Employee Benefits</b>	<b>\$622,897.60</b>	<b>\$615,377.54</b>		<b>\$1,471,929.84</b>
<b>300 Purchased Professional and Technical Services</b>				
324 Professional Educational Services – Employee Training and Development Services				295.00
330 Other Professional Services				190,509.67
340 Technical Services		490.00		490.00
<b>Total Purchased Professional and Technical Services</b>		<b>\$490.00</b>		<b>\$191,294.67</b>
<b>400 Purchased Property Services</b>				
430 Repairs and Maintenance Services	175.50			498.34
440 Rentals	687.62	13,050.00		16,164.21
<b>Total Purchased Property Services</b>	<b>\$863.12</b>	<b>\$13,050.00</b>		<b>\$16,662.55</b>
<b>500 Other Purchased Services</b>				
520 Insurance – General				131,628.00
530 Communications	37.43			593.18
549 Other Advertising/Public Relations				5,841.48
550 Printing and Binding	680.20	16,834.00		17,514.20
580 Travel		2,607.43		4,289.95
599 Other Miscellaneous Purchased Services				875.00
<b>Total Other Purchased Services</b>	<b>\$717.63</b>	<b>\$19,441.43</b>		<b>\$160,741.81</b>
<b>600 Supplies</b>				
610 General Supplies	4,606.16	16,444.21		27,884.81
630 Food	809.75	5,475.55		16,991.36
640 Books and Periodicals		1,274.10		3,128.13
<b>Total Supplies</b>	<b>\$5,415.91</b>	<b>\$23,193.86</b>		<b>\$48,004.30</b>
<b>700 Property</b>				
750 Equipment – Original and Additional	2,022.35	9,973.57		12,040.92
760 Equipment – Replacement	3,637.07	12,312.48		16,795.61
<b>Total Property</b>	<b>\$5,659.42</b>	<b>\$22,286.05</b>		<b>\$28,836.53</b>
<b>800 Other Objects</b>				
810 Dues and Fees	6,904.52	5,398.12		39,550.65
<b>Total Other Objects</b>	<b>\$6,904.52</b>	<b>\$5,398.12</b>		<b>\$39,550.65</b>
<b>Total 2300 Support Services – Administration</b>	<b>\$1,740,507.66</b>	<b>\$1,880,554.43</b>		<b>\$4,618,497.87</b>

**General Fund (10)**

**2310 Board Services**

Elementary                      Secondary                      Federal                      Total

<b>300</b>	<b><u>Purchased Professional and Technical Services</u></b>			
	330 Other Professional Services			34,287.34
<b>Total Purchased Professional and Technical Services</b>				<b>\$34,287.34</b>
<b>400</b>	<b><u>Purchased Property Services</u></b>			
	430 Repairs and Maintenance Services			161.38
	440 Rentals			419.90
<b>Total Purchased Property Services</b>				<b>\$581.28</b>
<b>500</b>	<b><u>Other Purchased Services</u></b>			
	520 Insurance – General			131,628.00
	549 Other Advertising/Public Relations			5,841.48
	580 Travel			695.00
	599 Other Miscellaneous Purchased Services			875.00
<b>Total Other Purchased Services</b>				<b>\$139,039.48</b>
<b>600</b>	<b><u>Supplies</u></b>			
	610 General Supplies			1,819.75
	630 Food			8,964.13
<b>Total Supplies</b>				<b>\$10,783.88</b>
<b>800</b>	<b><u>Other Objects</u></b>			
	810 Dues and Fees			14,800.00
<b>Total Other Objects</b>				<b>\$14,800.00</b>
<b>Total 2310 Board Services</b>				<b>\$199,491.98</b>

**General Fund (10)**

**2330 Tax Assessment and Collection Services**

Elementary

Secondary

Federal

Total

**100 Personnel Services – Salaries**

100 Personnel Services – Salaries

33,830.25

**Total Personnel Services – Salaries**

**\$33,830.25**

**200 Personnel Services – Employee Benefits**

210 Group Insurance – Contracted Provider

15,698.58

220 Social Security Contributions

2,445.42

230 PSERS Retirement Contributions

8,741.74

**Total Personnel Services – Employee Benefits**

**\$26,885.74**

**500 Other Purchased Services**

530 Communications

555.75

**Total Other Purchased Services**

**\$555.75**

**600 Supplies**

610 General Supplies

597.24

**Total Supplies**

**\$597.24**

**Total 2330 Tax Assessment and Collection Services**

**\$61,868.98**

General Fund (10)

2350 Legal and Accounting Services

Elementary

Secondary

Federal

Total

300 Purchased Professional and Technical Services

330 Other Professional Services

130,321.83

**Total Purchased Professional and Technical Services**

**\$130,321.83**

**Total 2350 Legal and Accounting Services**

**\$130,321.83**

General Fund (10)

2360 Office of the Superintendent / Executive Director Services

Elementary

Secondary

Federal

Total

100 Personnel Services – Salaries

100 Personnel Services – Salaries 269,962.48

**Total Personnel Services – Salaries \$269,962.48**

200 Personnel Services – Employee Benefits

210 Group Insurance – Contracted Provider 45,652.82

220 Social Security Contributions 20,233.58

230 PSERS Retirement Contributions 69,403.92

290 Other Current Employee Benefits 3,693.04

**Total Personnel Services – Employee Benefits \$138,983.36**

300 Purchased Professional and Technical Services

324 Professional Educational Services – Employee Training and Development Services 295.00

330 Other Professional Services 1,200.00

**Total Purchased Professional and Technical Services \$1,495.00**

400 Purchased Property Services

430 Repairs and Maintenance Services 161.46

440 Rentals 2,006.69

**Total Purchased Property Services \$2,168.15**

500 Other Purchased Services

580 Travel 987.52

**Total Other Purchased Services \$987.52**

600 Supplies

610 General Supplies 4,270.45

630 Food 1,741.93

640 Books and Periodicals 1,854.03

**Total Supplies \$7,866.41**

700 Property

750 Equipment – Original and Additional 45.00

760 Equipment – Replacement 846.06

**Total Property \$891.06**

800 Other Objects

810 Dues and Fees 12,448.01

**Total Other Objects \$12,448.01**

**Total 2360 Office of the Superintendent / Executive Director Services \$434,801.99**

General Fund (10)

	<u>Elementary</u>	<u>Secondary</u>	<u>Federal</u>	<u>Total</u>
<b>2370 Community Relations Services</b>				
<b>100 Personnel Services – Salaries</b>				
100 Personnel Services – Salaries				78,317.90
<b>Total Personnel Services – Salaries</b>				<b>\$78,317.90</b>
<b>200 Personnel Services – Employee Benefits</b>				
210 Group Insurance – Contracted Provider				42,702.16
220 Social Security Contributions				5,443.41
230 PSERS Retirement Contributions				19,640.03
<b>Total Personnel Services – Employee Benefits</b>				<b>\$67,785.60</b>
<b>300 Purchased Professional and Technical Services</b>				
330 Other Professional Services				24,700.50
<b>Total Purchased Professional and Technical Services</b>				<b>\$24,700.50</b>
<b>600 Supplies</b>				
610 General Supplies				147.00
<b>Total Supplies</b>				<b>\$147.00</b>
<b>Total 2370 Community Relations Services</b>				<b>\$170,951.00</b>

**General Fund (10)**

	<u>Elementary</u>	<u>Secondary</u>	<u>Federal</u>	<u>Total</u>
<b>2380 Office of the Principal Services</b>				
<b>100 Personnel Services – Salaries</b>				
100 Personnel Services – Salaries	1,098,049.46	1,181,317.43		2,279,366.89
<b>Total Personnel Services – Salaries</b>	<b>\$1,098,049.46</b>	<b>\$1,181,317.43</b>		<b>\$2,279,366.89</b>
<b>200 Personnel Services – Employee Benefits</b>				
210 Group Insurance – Contracted Provider	233,546.96	221,692.67		455,239.63
220 Social Security Contributions	77,330.98	83,941.50		161,272.48
230 PSERS Retirement Contributions	283,736.20	301,844.33		585,580.53
240 Tuition Reimbursement	20,683.00			20,683.00
290 Other Current Employee Benefits	7,600.46	7,899.04		15,499.50
<b>Total Personnel Services – Employee Benefits</b>	<b>\$622,897.60</b>	<b>\$615,377.54</b>		<b>\$1,238,275.14</b>
<b>300 Purchased Professional and Technical Services</b>				
340 Technical Services		490.00		490.00
<b>Total Purchased Professional and Technical Services</b>		<b>\$490.00</b>		<b>\$490.00</b>
<b>400 Purchased Property Services</b>				
430 Repairs and Maintenance Services	175.50			175.50
440 Rentals	687.62	13,050.00		13,737.62
<b>Total Purchased Property Services</b>	<b>\$863.12</b>	<b>\$13,050.00</b>		<b>\$13,913.12</b>
<b>500 Other Purchased Services</b>				
530 Communications	37.43			37.43
550 Printing and Binding	680.20	16,834.00		17,514.20
580 Travel		2,607.43		2,607.43
<b>Total Other Purchased Services</b>	<b>\$717.63</b>	<b>\$19,441.43</b>		<b>\$20,159.06</b>
<b>600 Supplies</b>				
610 General Supplies	4,606.16	16,444.21		21,050.37
630 Food	809.75	5,475.55		6,285.30
640 Books and Periodicals		1,274.10		1,274.10
<b>Total Supplies</b>	<b>\$5,415.91</b>	<b>\$23,193.86</b>		<b>\$28,609.77</b>
<b>700 Property</b>				
750 Equipment – Original and Additional	2,022.35	9,973.57		11,995.92
760 Equipment – Replacement	3,637.07	12,312.48		15,949.55
<b>Total Property</b>	<b>\$5,659.42</b>	<b>\$22,286.05</b>		<b>\$27,945.47</b>
<b>800 Other Objects</b>				
810 Dues and Fees	6,904.52	5,398.12		12,302.64
<b>Total Other Objects</b>	<b>\$6,904.52</b>	<b>\$5,398.12</b>		<b>\$12,302.64</b>
<b>Total 2380 Office of the Principal Services</b>	<b>\$1,740,507.66</b>	<b>\$1,880,554.43</b>		<b>\$3,621,062.09</b>

General Fund (10)

	<u>Elementary</u>	<u>Secondary</u>	<u>Federal</u>	<u>Total</u>
<b>2400 Support Services – Pupil Health</b>				
<b>100 Personnel Services – Salaries</b>				
100 Personnel Services – Salaries				1,068,474.07
<b>Total Personnel Services – Salaries</b>				<b>\$1,068,474.07</b>
<b>200 Personnel Services – Employee Benefits</b>				
210 Group Insurance – Contracted Provider				259,670.26
220 Social Security Contributions				81,606.71
230 PSERS Retirement Contributions				280,258.02
<b>Total Personnel Services – Employee Benefits</b>				<b>\$621,534.99</b>
<b>300 Purchased Professional and Technical Services</b>				
330 Other Professional Services				571,275.95
<b>Total Purchased Professional and Technical Services</b>				<b>\$571,275.95</b>
<b>500 Other Purchased Services</b>				
580 Travel				281.98
<b>Total Other Purchased Services</b>				<b>\$281.98</b>
<b>600 Supplies</b>				
610 General Supplies				12,682.83
<b>Total Supplies</b>				<b>\$12,682.83</b>
<b>700 Property</b>				
750 Equipment – Original and Additional				15,101.95
760 Equipment – Replacement				1,998.00
<b>Total Property</b>				<b>\$17,099.95</b>
<b>Total 2400 Support Services – Pupil Health</b>				<b>\$2,291,349.77</b>



**General Fund (10)**

**2420 Medical Services**

	<u>Elementary</u>	<u>Secondary</u>	<u>Federal</u>	<u>Total</u>
<b>100 Personnel Services – Salaries</b>				
100 Personnel Services – Salaries				211,957.60
<b>Total Personnel Services – Salaries</b>				<b>\$211,957.60</b>
<b>200 Personnel Services – Employee Benefits</b>				
210 Group Insurance – Contracted Provider				48,456.91
220 Social Security Contributions				16,166.37
230 PSERS Retirement Contributions				54,769.70
<b>Total Personnel Services – Employee Benefits</b>				<b>\$119,392.98</b>
<b>300 Purchased Professional and Technical Services</b>				
330 Other Professional Services				562,275.95
<b>Total Purchased Professional and Technical Services</b>				<b>\$562,275.95</b>
<b>500 Other Purchased Services</b>				
580 Travel				14.78
<b>Total Other Purchased Services</b>				<b>\$14.78</b>
<b>700 Property</b>				
750 Equipment – Original and Additional				15,101.95
<b>Total Property</b>				<b>\$15,101.95</b>
<b>Total 2420 Medical Services</b>				<b>\$908,743.26</b>

General Fund (10)

2430 Dental Services

Elementary

Secondary

Federal

Total

100 Personnel Services – Salaries

100 Personnel Services – Salaries

14,630.53

**Total Personnel Services – Salaries**

**\$14,630.53**

200 Personnel Services – Employee Benefits

220 Social Security Contributions

1,119.26

230 PSERS Retirement Contributions

12,207.18

**Total Personnel Services – Employee Benefits**

**\$13,326.44**

300 Purchased Professional and Technical Services

330 Other Professional Services

9,000.00

**Total Purchased Professional and Technical Services**

**\$9,000.00**

**Total 2430 Dental Services**

**\$36,956.97**

General Fund (10)

2440 Nursing Services

Elementary                      Secondary                      Federal                      Total

100 Personnel Services – Salaries

100 Personnel Services – Salaries 728,390.81

**Total Personnel Services – Salaries \$728,390.81**

200 Personnel Services – Employee Benefits

210 Group Insurance – Contracted Provider 190,681.11

220 Social Security Contributions 55,836.21

230 PSERS Retirement Contributions 183,879.95

**Total Personnel Services – Employee Benefits \$430,397.27**

500 Other Purchased Services

580 Travel 267.20

**Total Other Purchased Services \$267.20**

600 Supplies

610 General Supplies 12,682.83

**Total Supplies \$12,682.83**

700 Property

760 Equipment – Replacement 1,998.00

**Total Property \$1,998.00**

**Total 2440 Nursing Services \$1,173,736.11**

General Fund (10)

	<u>Elementary</u>	<u>Secondary</u>	<u>Federal</u>	<u>Total</u>
<b>2450 Nonpublic Health Services</b>				
<b>100 Personnel Services – Salaries</b>				
100 Personnel Services – Salaries				113,495.13
<b>Total Personnel Services – Salaries</b>				<b>\$113,495.13</b>
<b>200 Personnel Services – Employee Benefits</b>				
210 Group Insurance – Contracted Provider				20,532.24
220 Social Security Contributions				8,484.87
230 PSERS Retirement Contributions				29,401.19
<b>Total Personnel Services – Employee Benefits</b>				<b>\$58,418.30</b>
<b>Total 2450 Nonpublic Health Services</b>				<b>\$171,913.43</b>

**General Fund (10)**

	<u>Elementary</u>	<u>Secondary</u>	<u>Federal</u>	<u>Total</u>
<b>2500 Support Services – Business</b>				
<b>100 Personnel Services – Salaries</b>				
100 Personnel Services – Salaries				494,897.51
<b>Total Personnel Services – Salaries</b>				<b>\$494,897.51</b>
<b>200 Personnel Services – Employee Benefits</b>				
210 Group Insurance – Contracted Provider				122,794.85
220 Social Security Contributions				34,645.71
230 PSERS Retirement Contributions				135,792.39
240 Tuition Reimbursement				750.00
290 Other Current Employee Benefits				5,391.83
<b>Total Personnel Services – Employee Benefits</b>				<b>\$299,374.78</b>
<b>300 Purchased Professional and Technical Services</b>				
330 Other Professional Services				12,281.83
<b>Total Purchased Professional and Technical Services</b>				<b>\$12,281.83</b>
<b>400 Purchased Property Services</b>				
430 Repairs and Maintenance Services				25,028.75
440 Rentals				37,437.24
<b>Total Purchased Property Services</b>				<b>\$62,465.99</b>
<b>500 Other Purchased Services</b>				
550 Printing and Binding				323.75
580 Travel				139.46
<b>Total Other Purchased Services</b>				<b>\$463.21</b>
<b>600 Supplies</b>				
610 General Supplies				38,082.37
630 Food				81.80
<b>Total Supplies</b>				<b>\$38,164.17</b>
<b>700 Property</b>				
750 Equipment – Original and Additional				1,199.98
760 Equipment – Replacement				57,525.84
<b>Total Property</b>				<b>\$58,725.82</b>
<b>800 Other Objects</b>				
810 Dues and Fees				23,866.07
890 Miscellaneous Expenditures				11,516.48
<b>Total Other Objects</b>				<b>\$35,382.55</b>
<b>Total 2500 Support Services – Business</b>				<b>\$1,001,755.86</b>

General Fund (10)

2510 Fiscal Services

Elementary                      Secondary                      Federal                      Total

<b>100 Personnel Services – Salaries</b>				
100 Personnel Services – Salaries				362,701.41
<b>Total Personnel Services – Salaries</b>				<b>\$362,701.41</b>
<b>200 Personnel Services – Employee Benefits</b>				
210 Group Insurance – Contracted Provider				95,209.16
220 Social Security Contributions				24,692.71
230 PSERS Retirement Contributions				101,632.98
240 Tuition Reimbursement				750.00
290 Other Current Employee Benefits				4,392.32
<b>Total Personnel Services – Employee Benefits</b>				<b>\$226,677.17</b>
<b>300 Purchased Professional and Technical Services</b>				
330 Other Professional Services				12,281.83
<b>Total Purchased Professional and Technical Services</b>				<b>\$12,281.83</b>
<b>400 Purchased Property Services</b>				
430 Repairs and Maintenance Services				20,714.05
440 Rentals				10,634.85
<b>Total Purchased Property Services</b>				<b>\$31,348.90</b>
<b>500 Other Purchased Services</b>				
550 Printing and Binding				323.75
580 Travel				139.46
<b>Total Other Purchased Services</b>				<b>\$463.21</b>
<b>600 Supplies</b>				
610 General Supplies				37,911.88
630 Food				81.80
<b>Total Supplies</b>				<b>\$37,993.68</b>
<b>700 Property</b>				
750 Equipment – Original and Additional				1,199.98
760 Equipment – Replacement				57,525.84
<b>Total Property</b>				<b>\$58,725.82</b>
<b>800 Other Objects</b>				
810 Dues and Fees				23,866.07
890 Miscellaneous Expenditures				11,516.48
<b>Total Other Objects</b>				<b>\$35,382.55</b>
<b>Total 2510 Fiscal Services</b>				<b>\$765,574.57</b>

General Fund (10)

2511 Supervision of Fiscal Services - Head of Component

Elementary

Secondary

Federal

Total

100 Personnel Services – Salaries

100 Personnel Services – Salaries 362,701.41

**Total Personnel Services – Salaries \$362,701.41**

200 Personnel Services – Employee Benefits

210 Group Insurance – Contracted Provider 95,209.16

220 Social Security Contributions 24,692.71

230 PSERS Retirement Contributions 101,632.98

240 Tuition Reimbursement 750.00

290 Other Current Employee Benefits 4,392.32

**Total Personnel Services – Employee Benefits \$226,677.17**

300 Purchased Professional and Technical Services

330 Other Professional Services 12,281.83

**Total Purchased Professional and Technical Services \$12,281.83**

400 Purchased Property Services

430 Repairs and Maintenance Services 20,714.05

440 Rentals 10,634.85

**Total Purchased Property Services \$31,348.90**

500 Other Purchased Services

550 Printing and Binding 323.75

580 Travel 139.46

**Total Other Purchased Services \$463.21**

600 Supplies

610 General Supplies 37,911.88

630 Food 81.80

**Total Supplies \$37,993.68**

700 Property

750 Equipment – Original and Additional 1,199.98

760 Equipment – Replacement 57,525.84

**Total Property \$58,725.82**

800 Other Objects

810 Dues and Fees 23,866.07

890 Miscellaneous Expenditures 11,516.48

**Total Other Objects \$35,382.55**

**Total 2511 Supervision of Fiscal Services - Head of Component \$765,574.57**

General Fund (10)

2520 Purchasing Services

Elementary

Secondary

Federal

Total

100 Personnel Services – Salaries

100 Personnel Services – Salaries

70,865.17

**Total Personnel Services – Salaries**

**\$70,865.17**

200 Personnel Services – Employee Benefits

210 Group Insurance – Contracted Provider

5,828.25

220 Social Security Contributions

5,421.99

230 PSERS Retirement Contributions

18,311.56

290 Other Current Employee Benefits

999.51

**Total Personnel Services – Employee Benefits**

**\$30,561.31**

**Total 2520 Purchasing Services**

**\$101,426.48**



General Fund (10)

2530 Warehousing and Distributing Services	<u>Elementary</u>	<u>Secondary</u>	<u>Federal</u>	<u>Total</u>
<b>100 Personnel Services – Salaries</b>				
100 Personnel Services – Salaries				27,131.16
<b>Total Personnel Services – Salaries</b>				<b>\$27,131.16</b>
<b>200 Personnel Services – Employee Benefits</b>				
210 Group Insurance – Contracted Provider				12,120.72
220 Social Security Contributions				1,971.62
230 PSERS Retirement Contributions				7,010.65
<b>Total Personnel Services – Employee Benefits</b>				<b>\$21,102.99</b>
<b>Total 2530 Warehousing and Distributing Services</b>				<b>\$48,234.15</b>

General Fund (10)

2540 Printing, Publishing and Duplicating Services

Elementary

Secondary

Federal

Total

100 Personnel Services – Salaries

100 Personnel Services – Salaries

34,199.77

**Total Personnel Services – Salaries**

**\$34,199.77**

200 Personnel Services – Employee Benefits

210 Group Insurance – Contracted Provider

9,636.72

220 Social Security Contributions

2,559.39

230 PSERS Retirement Contributions

8,837.20

**Total Personnel Services – Employee Benefits**

**\$21,033.31**

400 Purchased Property Services

430 Repairs and Maintenance Services

4,314.70

440 Rentals

26,802.39

**Total Purchased Property Services**

**\$31,117.09**

600 Supplies

610 General Supplies

170.49

**Total Supplies**

**\$170.49**

**Total 2540 Printing, Publishing and Duplicating Services**

**\$86,520.66**

General Fund (10)

	<u>Elementary</u>	<u>Secondary</u>	<u>Federal</u>	<u>Total</u>
<b>2600 Operation and Maintenance of Plant Services</b>				
<b>100 Personnel Services – Salaries</b>				
100 Personnel Services – Salaries				3,256,391.38
<b>Total Personnel Services – Salaries</b>				<b>\$3,256,391.38</b>
<b>200 Personnel Services – Employee Benefits</b>				
210 Group Insurance – Contracted Provider				725,589.67
220 Social Security Contributions				244,421.13
230 PSERS Retirement Contributions				846,435.26
250 Unemployment Compensation				2,238.25
290 Other Current Employee Benefits				1,999.92
<b>Total Personnel Services – Employee Benefits</b>				<b>\$1,820,684.23</b>
<b>300 Purchased Professional and Technical Services</b>				
324 Professional Educational Services – Employee Training and Development Services				1,345.00
330 Other Professional Services				75.00
<b>Total Purchased Professional and Technical Services</b>				<b>\$1,420.00</b>
<b>400 Purchased Property Services</b>				
410 Cleaning Services				36,827.12
420 Utility Services				1,218,710.24
430 Repairs and Maintenance Services				591,444.82
440 Rentals				219,361.29
<b>Total Purchased Property Services</b>				<b>\$2,066,343.47</b>
<b>500 Other Purchased Services</b>				
523 General Property and Liability Insurance				255,009.00
530 Communications				122,925.54
550 Printing and Binding				55.00
580 Travel				1,701.72
<b>Total Other Purchased Services</b>				<b>\$379,691.26</b>
<b>600 Supplies</b>				
610 General Supplies	110,605.17	268,907.51		379,512.68
620 Energy				274,469.26
<b>Total Supplies</b>	<b>\$110,605.17</b>	<b>\$268,907.51</b>		<b>\$653,981.94</b>
<b>700 Property</b>				
750 Equipment – Original and Additional				25,574.35
760 Equipment – Replacement				10,939.35
<b>Total Property</b>				<b>\$36,513.70</b>
<b>800 Other Objects</b>				
810 Dues and Fees				8,594.99
<b>Total Other Objects</b>				<b>\$8,594.99</b>
<b>Total 2600 Operation and Maintenance of Plant Services</b>	<b>\$110,605.17</b>	<b>\$268,907.51</b>		<b>\$8,223,620.97</b>

**General Fund (10)**

	<u>Elementary</u>	<u>Secondary</u>	<u>Federal</u>	<u>Total</u>
<b>2610 Supervision of Operation and Maintenance of Plant Services</b>				
<b>100 Personnel Services – Salaries</b>				
100 Personnel Services – Salaries				168,572.46
<b>Total Personnel Services – Salaries</b>				<b>\$168,572.46</b>
<b>200 Personnel Services – Employee Benefits</b>				
210 Group Insurance – Contracted Provider				51,817.40
220 Social Security Contributions				12,371.02
230 PSERS Retirement Contributions				41,021.63
<b>Total Personnel Services – Employee Benefits</b>				<b>\$105,210.05</b>
<b>300 Purchased Professional and Technical Services</b>				
324 Professional Educational Services – Employee Training and Development Services				1,345.00
<b>Total Purchased Professional and Technical Services</b>				<b>\$1,345.00</b>
<b>500 Other Purchased Services</b>				
550 Printing and Binding				55.00
580 Travel				1,701.72
<b>Total Other Purchased Services</b>				<b>\$1,756.72</b>
<b>600 Supplies</b>				
610 General Supplies	5,638.76	5,638.76		11,277.52
<b>Total Supplies</b>	<b>\$5,638.76</b>	<b>\$5,638.76</b>		<b>\$11,277.52</b>
<b>700 Property</b>				
760 Equipment – Replacement				3,163.35
<b>Total Property</b>				<b>\$3,163.35</b>
<b>Total 2610 Supervision of Operation and Maintenance of Plant Services</b>	<b>\$5,638.76</b>	<b>\$5,638.76</b>		<b>\$291,325.10</b>

General Fund (10)

	<u>Elementary</u>	<u>Secondary</u>	<u>Federal</u>	<u>Total</u>
<b>2611 Supervision of Operation and Maintenance of Plant Services – Head of Component</b>				
<b>100 Personnel Services – Salaries</b>				
100 Personnel Services – Salaries				168,572.46
<b>Total Personnel Services – Salaries</b>				<b>\$168,572.46</b>
<b>200 Personnel Services – Employee Benefits</b>				
210 Group Insurance – Contracted Provider				51,817.40
220 Social Security Contributions				12,371.02
230 PSERS Retirement Contributions				41,021.63
<b>Total Personnel Services – Employee Benefits</b>				<b>\$105,210.05</b>
<b>300 Purchased Professional and Technical Services</b>				
324 Professional Educational Services – Employee Training and Development Services				1,345.00
<b>Total Purchased Professional and Technical Services</b>				<b>\$1,345.00</b>
<b>500 Other Purchased Services</b>				
550 Printing and Binding				55.00
580 Travel				1,701.72
<b>Total Other Purchased Services</b>				<b>\$1,756.72</b>
<b>600 Supplies</b>				
610 General Supplies	5,638.76	5,638.76		11,277.52
<b>Total Supplies</b>	<b>\$5,638.76</b>	<b>\$5,638.76</b>		<b>\$11,277.52</b>
<b>700 Property</b>				
760 Equipment – Replacement				3,163.35
<b>Total Property</b>				<b>\$3,163.35</b>
<b>Total 2611 Supervision of Operation and Maintenance of Plant Services – Head of Component</b>	<b>\$5,638.76</b>	<b>\$5,638.76</b>		<b>\$291,325.10</b>

**General Fund (10)**

	<u>Elementary</u>	<u>Secondary</u>	<u>Federal</u>	<u>Total</u>
<b>2620 Operation of Buildings Services</b>				
<b>100 Personnel Services – Salaries</b>				
100 Personnel Services – Salaries				2,735,474.89
<b>Total Personnel Services – Salaries</b>				<b>\$2,735,474.89</b>
<b>200 Personnel Services – Employee Benefits</b>				
210 Group Insurance – Contracted Provider				581,181.83
220 Social Security Contributions				205,721.79
230 PSERS Retirement Contributions				713,431.11
250 Unemployment Compensation				2,238.25
290 Other Current Employee Benefits				1,999.92
<b>Total Personnel Services – Employee Benefits</b>				<b>\$1,504,572.90</b>
<b>300 Purchased Professional and Technical Services</b>				
330 Other Professional Services				75.00
<b>Total Purchased Professional and Technical Services</b>				<b>\$75.00</b>
<b>400 Purchased Property Services</b>				
410 Cleaning Services				36,827.12
420 Utility Services				1,218,710.24
430 Repairs and Maintenance Services				543,866.23
440 Rentals				217,811.29
<b>Total Purchased Property Services</b>				<b>\$2,017,214.88</b>
<b>500 Other Purchased Services</b>				
523 General Property and Liability Insurance				255,009.00
530 Communications				122,925.54
<b>Total Other Purchased Services</b>				<b>\$377,934.54</b>
<b>600 Supplies</b>				
610 General Supplies	67,471.23	225,773.58		293,244.81
620 Energy				246,268.56
<b>Total Supplies</b>	<b>\$67,471.23</b>	<b>\$225,773.58</b>		<b>\$539,513.37</b>
<b>700 Property</b>				
750 Equipment – Original and Additional				25,574.35
<b>Total Property</b>				<b>\$25,574.35</b>
<b>800 Other Objects</b>				
810 Dues and Fees				8,594.99
<b>Total Other Objects</b>				<b>\$8,594.99</b>
<b>Total 2620 Operation of Buildings Services</b>	<b>\$67,471.23</b>	<b>\$225,773.58</b>		<b>\$7,208,954.92</b>

**General Fund (10)**

	<u>Elementary</u>	<u>Secondary</u>	<u>Federal</u>	<u>Total</u>
<b>2630 Care and Upkeep of Grounds Services</b>				
<b>100 Personnel Services – Salaries</b>				
100 Personnel Services – Salaries				305,744.29
<b>Total Personnel Services – Salaries</b>				<b>\$305,744.29</b>
<b>200 Personnel Services – Employee Benefits</b>				
210 Group Insurance – Contracted Provider				92,536.12
220 Social Security Contributions				22,795.00
230 PSERS Retirement Contributions				78,215.56
<b>Total Personnel Services – Employee Benefits</b>				<b>\$193,546.68</b>
<b>400 Purchased Property Services</b>				
430 Repairs and Maintenance Services				22,831.99
440 Rentals				1,550.00
<b>Total Purchased Property Services</b>				<b>\$24,381.99</b>
<b>600 Supplies</b>				
610 General Supplies	31,125.38	31,125.37		62,250.75
<b>Total Supplies</b>	<b>\$31,125.38</b>	<b>\$31,125.37</b>		<b>\$62,250.75</b>
<b>700 Property</b>				
760 Equipment – Replacement				7,776.00
<b>Total Property</b>				<b>\$7,776.00</b>
<b>Total 2630 Care and Upkeep of Grounds Services</b>	<b>\$31,125.38</b>	<b>\$31,125.37</b>		<b>\$593,699.71</b>

General Fund (10)

	<u>Elementary</u>	<u>Secondary</u>	<u>Federal</u>	<u>Total</u>
<b>2650 Vehicle Operation and Maintenance Services (Other Than Student Transportation Vehicles)</b>				
<b>400 Purchased Property Services</b>				
430 Repairs and Maintenance Services				24,746.60
<b>Total Purchased Property Services</b>				<b>\$24,746.60</b>
<b>600 Supplies</b>				
610 General Supplies	6,369.80	6,369.80		12,739.60
620 Energy				28,200.70
<b>Total Supplies</b>	<b>\$6,369.80</b>	<b>\$6,369.80</b>		<b>\$40,940.30</b>
<b>Total 2650 Vehicle Operation and Maintenance Services (Other Than Student Transportation Vehicles)</b>	<b>\$6,369.80</b>	<b>\$6,369.80</b>		<b>\$65,686.90</b>



General Fund (10)

2660 Safety and Security Services

Elementary

Secondary

Federal

Total

100 Personnel Services – Salaries

100 Personnel Services – Salaries

46,599.74

**Total Personnel Services – Salaries**

**\$46,599.74**

200 Personnel Services – Employee Benefits

210 Group Insurance – Contracted Provider

54.32

220 Social Security Contributions

3,533.32

230 PSERS Retirement Contributions

13,766.96

**Total Personnel Services – Employee Benefits**

**\$17,354.60**

**Total 2660 Safety and Security Services**

**\$63,954.34**

General Fund (10)

2700 Student Transportation Services

Elementary                      Secondary                      Federal                      Total

100 Personnel Services – Salaries

100 Personnel Services – Salaries 2,371,408.21

**Total Personnel Services – Salaries \$2,371,408.21**

200 Personnel Services – Employee Benefits

210 Group Insurance – Contracted Provider 406,198.43

220 Social Security Contributions 181,752.96

230 PSERS Retirement Contributions 617,029.42

250 Unemployment Compensation (291.72)

290 Other Current Employee Benefits 2,199.92

**Total Personnel Services – Employee Benefits \$1,206,889.01**

300 Purchased Professional and Technical Services

324 Professional Educational Services – Employee Training and Development Services 2,425.00

330 Other Professional Services 7,993.50

**Total Purchased Professional and Technical Services \$10,418.50**

400 Purchased Property Services

430 Repairs and Maintenance Services 111,627.65

440 Rentals 343,098.74

**Total Purchased Property Services \$454,726.39**

500 Other Purchased Services

513 Contracted Carriers 23,529.26

516 Student Transportation Services From the IU 23,970.91

522 Automotive Liability Insurance 100,281.00

530 Communications 654.68

550 Printing and Binding 55.00

580 Travel 2,865.55

**Total Other Purchased Services \$151,356.40**

600 Supplies

610 General Supplies 200,400.68

620 Energy 169,707.18

630 Food 1,162.20

640 Books and Periodicals 445.73

**Total Supplies \$371,715.79**

700 Property

750 Equipment – Original and Additional 4,627.55

760 Equipment – Replacement (619.89)

**Total Property \$4,007.66**

800 Other Objects

810 Dues and Fees 305.00

**Total Other Objects \$305.00**

**Total 2700 Student Transportation Services \$4,570,826.96**

**General Fund (10)**

2710 Supervision of Student Transportation Services	<u>Elementary</u>	<u>Secondary</u>	<u>Federal</u>	<u>Total</u>
<b>100 Personnel Services – Salaries</b>				
100 Personnel Services – Salaries				204,586.23
<b>Total Personnel Services – Salaries</b>				<b>\$204,586.23</b>
<b>200 Personnel Services – Employee Benefits</b>				
210 Group Insurance – Contracted Provider				79,522.24
220 Social Security Contributions				16,348.37
230 PSERS Retirement Contributions				53,103.09
290 Other Current Employee Benefits				2,199.92
<b>Total Personnel Services – Employee Benefits</b>				<b>\$151,173.62</b>
<b>300 Purchased Professional and Technical Services</b>				
330 Other Professional Services				7,993.50
<b>Total Purchased Professional and Technical Services</b>				<b>\$7,993.50</b>
<b>400 Purchased Property Services</b>				
430 Repairs and Maintenance Services				865.10
440 Rentals				49,379.52
<b>Total Purchased Property Services</b>				<b>\$50,244.62</b>
<b>500 Other Purchased Services</b>				
513 Contracted Carriers				1,105.30
516 Student Transportation Services From the IU				23,970.91
522 Automotive Liability Insurance				100,281.00
530 Communications				654.68
550 Printing and Binding				55.00
580 Travel				2,865.55
<b>Total Other Purchased Services</b>				<b>\$128,932.44</b>
<b>600 Supplies</b>				
610 General Supplies				2,360.61
630 Food				1,114.26
640 Books and Periodicals				445.73
<b>Total Supplies</b>				<b>\$3,920.60</b>
<b>700 Property</b>				
750 Equipment – Original and Additional				2,800.22
760 Equipment – Replacement				4,259.11
<b>Total Property</b>				<b>\$7,059.33</b>
<b>800 Other Objects</b>				
810 Dues and Fees				305.00
<b>Total Other Objects</b>				<b>\$305.00</b>
<b>Total 2710 Supervision of Student Transportation Services</b>				<b>\$554,215.34</b>

General Fund (10)

2711 Supervision of Student Transportation Services – Head of Component

Elementary                      Secondary                      Federal                      Total

<b>100 Personnel Services – Salaries</b>				
100 Personnel Services – Salaries				204,586.23
<b>Total Personnel Services – Salaries</b>				<b>\$204,586.23</b>
<b>200 Personnel Services – Employee Benefits</b>				
210 Group Insurance – Contracted Provider				79,522.24
220 Social Security Contributions				16,348.37
230 PSERS Retirement Contributions				53,103.09
290 Other Current Employee Benefits				2,199.92
<b>Total Personnel Services – Employee Benefits</b>				<b>\$151,173.62</b>
<b>300 Purchased Professional and Technical Services</b>				
330 Other Professional Services				7,993.50
<b>Total Purchased Professional and Technical Services</b>				<b>\$7,993.50</b>
<b>400 Purchased Property Services</b>				
430 Repairs and Maintenance Services				865.10
440 Rentals				49,379.52
<b>Total Purchased Property Services</b>				<b>\$50,244.62</b>
<b>500 Other Purchased Services</b>				
513 Contracted Carriers				1,105.30
516 Student Transportation Services From the IU				23,970.91
522 Automotive Liability Insurance				100,281.00
530 Communications				654.68
550 Printing and Binding				55.00
580 Travel				2,865.55
<b>Total Other Purchased Services</b>				<b>\$128,932.44</b>
<b>600 Supplies</b>				
610 General Supplies				2,360.61
630 Food				1,114.26
640 Books and Periodicals				445.73
<b>Total Supplies</b>				<b>\$3,920.60</b>
<b>700 Property</b>				
750 Equipment – Original and Additional				2,800.22
760 Equipment – Replacement				4,259.11
<b>Total Property</b>				<b>\$7,059.33</b>
<b>800 Other Objects</b>				
810 Dues and Fees				305.00
<b>Total Other Objects</b>				<b>\$305.00</b>
<b>Total 2711 Supervision of Student Transportation Services – Head of Component</b>				<b>\$554,215.34</b>

**General Fund (10)**

	<u>Elementary</u>	<u>Secondary</u>	<u>Federal</u>	<u>Total</u>
<b>2720 Vehicle Operation Services</b>				
<b>100 Personnel Services – Salaries</b>				
100 Personnel Services – Salaries				2,043,286.03
<b>Total Personnel Services – Salaries</b>				<b>\$2,043,286.03</b>
<b>200 Personnel Services – Employee Benefits</b>				
210 Group Insurance – Contracted Provider				280,368.39
220 Social Security Contributions				156,390.79
230 PSERS Retirement Contributions				532,004.62
250 Unemployment Compensation				(291.72)
<b>Total Personnel Services – Employee Benefits</b>				<b>\$968,472.08</b>
<b>300 Purchased Professional and Technical Services</b>				
324 Professional Educational Services – Employee Training and Development Services				2,425.00
<b>Total Purchased Professional and Technical Services</b>				<b>\$2,425.00</b>
<b>400 Purchased Property Services</b>				
430 Repairs and Maintenance Services				(1,353.03)
440 Rentals				293,719.22
<b>Total Purchased Property Services</b>				<b>\$292,366.19</b>
<b>600 Supplies</b>				
610 General Supplies				1,828.73
630 Food				47.94
<b>Total Supplies</b>				<b>\$1,876.67</b>
<b>700 Property</b>				
760 Equipment – Replacement				(4,879.00)
<b>Total Property</b>				<b>(\$4,879.00)</b>
<b>Total 2720 Vehicle Operation Services</b>				<b>\$3,303,546.97</b>

General Fund (10)

2740 Vehicle Servicing and Maintenance Services

Elementary

Secondary

Federal

Total

100 Personnel Services – Salaries

100 Personnel Services – Salaries

123,535.95

**Total Personnel Services – Salaries**

**\$123,535.95**

200 Personnel Services – Employee Benefits

210 Group Insurance – Contracted Provider

46,307.80

220 Social Security Contributions

9,013.80

230 PSERS Retirement Contributions

31,921.71

**Total Personnel Services – Employee Benefits**

**\$87,243.31**

400 Purchased Property Services

430 Repairs and Maintenance Services

112,115.58

**Total Purchased Property Services**

**\$112,115.58**

600 Supplies

610 General Supplies

196,211.34

620 Energy

169,707.18

**Total Supplies**

**\$365,918.52**

700 Property

750 Equipment – Original and Additional

1,827.33

**Total Property**

**\$1,827.33**

**Total 2740 Vehicle Servicing and Maintenance Services**

**\$690,640.69**

General Fund (10)

2750 Nonpublic Transportation

Elementary

Secondary

Federal

Total

500 Other Purchased Services

513 Contracted Carriers

22,423.96

**Total Other Purchased Services**

**\$22,423.96**

**Total 2750 Nonpublic Transportation**

**\$22,423.96**

General Fund (10)

	<u>Elementary</u>	<u>Secondary</u>	<u>Federal</u>	<u>Total</u>
<b>2800 Support Services – Central</b>				
<b>100 Personnel Services – Salaries</b>				
100 Personnel Services – Salaries				589,518.77
<b>Total Personnel Services – Salaries</b>				<b>\$589,518.77</b>
<b>200 Personnel Services – Employee Benefits</b>				
210 Group Insurance – Contracted Provider				130,554.90
220 Social Security Contributions				41,312.68
230 PSERS Retirement Contributions				147,326.21
290 Other Current Employee Benefits				8,978.06
<b>Total Personnel Services – Employee Benefits</b>				<b>\$328,171.85</b>
<b>300 Purchased Professional and Technical Services</b>				
330 Other Professional Services				12,313.35
340 Technical Services				3,804.54
<b>Total Purchased Professional and Technical Services</b>				<b>\$16,117.89</b>
<b>400 Purchased Property Services</b>				
430 Repairs and Maintenance Services				165,362.28
440 Rentals				118,140.85
<b>Total Purchased Property Services</b>				<b>\$283,503.13</b>
<b>500 Other Purchased Services</b>				
530 Communications				54,528.12
550 Printing and Binding				239.50
580 Travel				901.41
<b>Total Other Purchased Services</b>				<b>\$55,669.03</b>
<b>600 Supplies</b>				
610 General Supplies				35,533.37
650 Supplies & Fees – Technology Related				44,515.36
<b>Total Supplies</b>				<b>\$80,048.73</b>
<b>700 Property</b>				
750 Equipment – Original and Additional				168,553.04
760 Equipment – Replacement				2,490.33
<b>Total Property</b>				<b>\$171,043.37</b>
<b>800 Other Objects</b>				
810 Dues and Fees				6,107.26
<b>Total Other Objects</b>				<b>\$6,107.26</b>
<b>Total 2800 Support Services – Central</b>				<b>\$1,530,180.03</b>



**General Fund (10)**

**2830 Staff Services**

	<u>Elementary</u>	<u>Secondary</u>	<u>Federal</u>	<u>Total</u>
<b>100 Personnel Services – Salaries</b>				
100 Personnel Services – Salaries				372,818.67
<b>Total Personnel Services – Salaries</b>				<b>\$372,818.67</b>
<b>200 Personnel Services – Employee Benefits</b>				
210 Group Insurance – Contracted Provider				92,299.13
220 Social Security Contributions				24,566.56
230 PSERS Retirement Contributions				91,330.88
290 Other Current Employee Benefits				6,978.14
<b>Total Personnel Services – Employee Benefits</b>				<b>\$215,174.71</b>
<b>300 Purchased Professional and Technical Services</b>				
330 Other Professional Services				12,313.35
340 Technical Services				2,304.54
<b>Total Purchased Professional and Technical Services</b>				<b>\$14,617.89</b>
<b>400 Purchased Property Services</b>				
430 Repairs and Maintenance Services				1,163.30
440 Rentals				5,350.28
<b>Total Purchased Property Services</b>				<b>\$6,513.58</b>
<b>500 Other Purchased Services</b>				
530 Communications				29,002.51
550 Printing and Binding				239.50
580 Travel				425.00
<b>Total Other Purchased Services</b>				<b>\$29,667.01</b>
<b>600 Supplies</b>				
610 General Supplies				24,258.82
650 Supplies & Fees – Technology Related				44,515.36
<b>Total Supplies</b>				<b>\$68,774.18</b>
<b>700 Property</b>				
760 Equipment – Replacement				2,490.33
<b>Total Property</b>				<b>\$2,490.33</b>
<b>800 Other Objects</b>				
810 Dues and Fees				1,837.26
<b>Total Other Objects</b>				<b>\$1,837.26</b>
<b>Total 2830 Staff Services</b>				<b>\$711,893.63</b>

General Fund (10)

2831 Supervision of Staff Services

Elementary

Secondary

Federal

Total

100 Personnel Services – Salaries

100 Personnel Services – Salaries

372,818.67

**Total Personnel Services – Salaries**

**\$372,818.67**

200 Personnel Services – Employee Benefits

210 Group Insurance – Contracted Provider

92,299.13

220 Social Security Contributions

24,566.56

230 PSERS Retirement Contributions

91,330.88

290 Other Current Employee Benefits

6,978.14

**Total Personnel Services – Employee Benefits**

**\$215,174.71**

300 Purchased Professional and Technical Services

330 Other Professional Services

12,313.35

340 Technical Services

2,304.54

**Total Purchased Professional and Technical Services**

**\$14,617.89**

400 Purchased Property Services

430 Repairs and Maintenance Services

1,163.30

440 Rentals

5,350.28

**Total Purchased Property Services**

**\$6,513.58**

500 Other Purchased Services

530 Communications

29,002.51

550 Printing and Binding

239.50

580 Travel

425.00

**Total Other Purchased Services**

**\$29,667.01**

600 Supplies

610 General Supplies

24,258.82

650 Supplies & Fees – Technology Related

44,515.36

**Total Supplies**

**\$68,774.18**

700 Property

760 Equipment – Replacement

2,490.33

**Total Property**

**\$2,490.33**

800 Other Objects

810 Dues and Fees

1,837.26

**Total Other Objects**

**\$1,837.26**

**Total 2831 Supervision of Staff Services**

**\$711,893.63**

General Fund (10)

2840 Data Processing Services

Elementary                      Secondary                      Federal                      Total

100 Personnel Services – Salaries

100 Personnel Services – Salaries 216,700.10

**Total Personnel Services – Salaries \$216,700.10**

200 Personnel Services – Employee Benefits

210 Group Insurance – Contracted Provider 38,255.77

220 Social Security Contributions 16,746.12

230 PSERS Retirement Contributions 55,995.33

290 Other Current Employee Benefits 1,999.92

**Total Personnel Services – Employee Benefits \$112,997.14**

500 Other Purchased Services

580 Travel 476.41

**Total Other Purchased Services \$476.41**

600 Supplies

610 General Supplies 274.55

**Total Supplies \$274.55**

800 Other Objects

810 Dues and Fees 4,270.00

**Total Other Objects \$4,270.00**

**Total 2840 Data Processing Services \$334,718.20**

General Fund (10)

2860 Management Services

Elementary

Secondary

Federal

Total

300 Purchased Professional and Technical Services

340 Technical Services

1,500.00

**Total Purchased Professional and Technical Services**

**\$1,500.00**

400 Purchased Property Services

430 Repairs and Maintenance Services

164,198.98

440 Rentals

112,790.57

**Total Purchased Property Services**

**\$276,989.55**

500 Other Purchased Services

530 Communications

25,525.61

**Total Other Purchased Services**

**\$25,525.61**

600 Supplies

610 General Supplies

11,000.00

**Total Supplies**

**\$11,000.00**

700 Property

750 Equipment – Original and Additional

168,553.04

**Total Property**

**\$168,553.04**

**Total 2860 Management Services**

**\$483,568.20**

General Fund (10)

2900 Other Support Services

Elementary

Secondary

Federal

Total

300 Purchased Professional and Technical Services

330 Other Professional Services

3,503.65

**Total Purchased Professional and Technical Services**

**\$3,503.65**

500 Other Purchased Services

595 IU Payments By Withholding

111,831.31

**Total Other Purchased Services**

**\$111,831.31**

**Total 2900 Other Support Services**

**\$115,334.96**

General Fund (10)

2910 Support Services Not Listed Elsewhere In the 2000 Series	<u>Elementary</u>	<u>Secondary</u>	<u>Federal</u>	<u>Total</u>
<b>300 <u>Purchased Professional and Technical Services</u></b>				
330 Other Professional Services				3,503.65
<b>Total Purchased Professional and Technical Services</b>				<b>\$3,503.65</b>
<b>500 <u>Other Purchased Services</u></b>				
595 IU Payments By Withholding				111,831.31
<b>Total Other Purchased Services</b>				<b>\$111,831.31</b>
<b>Total 2910 Support Services Not Listed Elsewhere In the 2000 Series</b>				<b>\$115,334.96</b>

**General Fund (10)**

**3000 Operation of Non-Instructional Services**

**Total**

**100 Personnel Services – Salaries**

100 Personnel Services – Salaries 702,580.05

**Total Personnel Services – Salaries \$702,580.05**

**200 Personnel Services – Employee Benefits**

210 Group Insurance – Contracted Provider 37,866.59

220 Social Security Contributions 53,224.85

230 PSERS Retirement Contributions 149,755.97

250 Unemployment Compensation 325.20

290 Other Current Employee Benefits 1,799.96

**Total Personnel Services – Employee Benefits \$242,972.57**

**300 Purchased Professional and Technical Services**

330 Other Professional Services 66,848.07

390 Other Purchased Professional and Technical Services 60,624.00

**Total Purchased Professional and Technical Services \$127,472.07**

**400 Purchased Property Services**

410 Cleaning Services 13,995.56

430 Repairs and Maintenance Services 3,436.28

440 Rentals 21,682.50

**Total Purchased Property Services \$39,114.34**

**500 Other Purchased Services**

520 Insurance – General 12,033.50

550 Printing and Binding 2,372.00

580 Travel 14,045.99

591 Services Purchased Locally 205,972.10

**Total Other Purchased Services \$234,423.59**

**600 Supplies**

610 General Supplies 67,984.33

650 Supplies & Fees – Technology Related 3,199.00

**Total Supplies \$71,183.33**

**700 Property**

750 Equipment – Original and Additional 2,165.94

760 Equipment – Replacement 12,172.32

**Total Property \$14,338.26**

**800 Other Objects**

810 Dues and Fees 23,499.00

**Total Other Objects \$23,499.00**

**Total 3000 Operation of Non-Instructional Services**

**\$1,455,583.21**

General Fund (10)

3200 Student Activities

Elementary                      Secondary                      Federal                      Total

<b>100 Personnel Services – Salaries</b>				
100 Personnel Services – Salaries				702,580.05
<b>Total Personnel Services – Salaries</b>				<b>\$702,580.05</b>
<b>200 Personnel Services – Employee Benefits</b>				
210 Group Insurance – Contracted Provider				37,866.59
220 Social Security Contributions				53,224.85
230 PSERS Retirement Contributions				149,755.97
250 Unemployment Compensation				325.20
290 Other Current Employee Benefits				1,799.96
<b>Total Personnel Services – Employee Benefits</b>				<b>\$242,972.57</b>
<b>300 Purchased Professional and Technical Services</b>				
330 Other Professional Services				66,848.07
390 Other Purchased Professional and Technical Services				60,624.00
<b>Total Purchased Professional and Technical Services</b>				<b>\$127,472.07</b>
<b>400 Purchased Property Services</b>				
410 Cleaning Services				13,995.56
430 Repairs and Maintenance Services				3,436.28
440 Rentals				21,682.50
<b>Total Purchased Property Services</b>				<b>\$39,114.34</b>
<b>500 Other Purchased Services</b>				
520 Insurance – General				12,033.50
550 Printing and Binding				2,372.00
580 Travel				14,045.99
<b>Total Other Purchased Services</b>				<b>\$28,451.49</b>
<b>600 Supplies</b>				
610 General Supplies				67,984.33
650 Supplies & Fees – Technology Related				3,199.00
<b>Total Supplies</b>				<b>\$71,183.33</b>
<b>700 Property</b>				
750 Equipment – Original and Additional				2,165.94
760 Equipment – Replacement				12,172.32
<b>Total Property</b>				<b>\$14,338.26</b>
<b>800 Other Objects</b>				
810 Dues and Fees				23,499.00
<b>Total Other Objects</b>				<b>\$23,499.00</b>
<b>Total 3200 Student Activities</b>				<b>\$1,249,611.11</b>



LEA : 125234502 Haverford Township SD

Printed 11/21/2016 1:32:06 PM

General Fund (10)

3300 Community Services

Elementary

Secondary

Federal

Total

500 Other Purchased Services

591 Services Purchased Locally

205,972.10

**Total Other Purchased Services**

**\$205,972.10**

**Total 3300 Community Services**

**\$205,972.10**

LEA : 125234502 Haverford Township SD

Printed 11/21/2016 1:32:08 PM

**General Fund (10)**

**5000 Other Expenditures and Financing Uses**

**Total**

**800 Other Objects**

830 Interest	4,270,443.37
880 Refunds of Prior Years' Receipts	19,836.57

<b>Total Other Objects</b>	<b>\$4,290,279.94</b>
----------------------------	-----------------------

**900 Other Uses of Funds**

910 Redemption of Principal	5,590,000.00
939 Other Fund Transfers	723,093.00
990 Miscellaneous Other Uses of Funds	280,670.94

<b>Total Other Uses of Funds</b>	<b>\$6,593,763.94</b>
----------------------------------	-----------------------

<b>Total 5000 Other Expenditures and Financing Uses</b>	<b>\$10,884,043.88</b>
---	------------------------

LEA : 125234502 Haverford Township SD

Printed 11/21/2016 1:32:08 PM

General Fund (10)

5100 Debt Service / Other Expenditures and Financing Uses	<u>Elementary</u>	<u>Secondary</u>	<u>Federal</u>	<u>Total</u>
<b>800 Other Objects</b>				
830 Interest				4,270,443.37
880 Refunds of Prior Years' Receipts				19,836.57
<b>Total Other Objects</b>				<b>\$4,290,279.94</b>
<b>900 Other Uses of Funds</b>				
910 Redemption of Principal				5,590,000.00
990 Miscellaneous Other Uses of Funds				280,670.94
<b>Total Other Uses of Funds</b>				<b>\$5,870,670.94</b>
<b>Total 5100 Debt Service / Other Expenditures and Financing Uses</b>				<b>\$10,160,950.88</b>

LEA : 125234502 Haverford Township SD

Printed 11/21/2016 1:32:08 PM

General Fund (10)

5110 Debt Service

Elementary

Secondary

Federal

Total

800 Other Objects

830 Interest

4,270,443.37

**Total Other Objects**

**\$4,270,443.37**

900 Other Uses of Funds

910 Redemption of Principal

5,590,000.00

990 Miscellaneous Other Uses of Funds

280,670.94

**Total Other Uses of Funds**

**\$5,870,670.94**

**Total 5110 Debt Service**

**\$10,141,114.31**

LEA : 125234502 Haverford Township SD

Printed 11/21/2016 1:32:08 PM

General Fund (10)

	<u>Elementary</u>	<u>Secondary</u>	<u>Federal</u>	<u>Total</u>
5130 Refund of Prior Year Revenues / Receipts				
800 <u>Other Objects</u>				
880 Refunds of Prior Years' Receipts				19,836.57
<b>Total Other Objects</b>				<b>\$19,836.57</b>
<b>Total 5130 Refund of Prior Year Revenues / Receipts</b>				<b>\$19,836.57</b>

General Fund (10)

	<u>Elementary</u>	<u>Secondary</u>	<u>Federal</u>	<u>Total</u>
<b>5200 Interfund Transfers – Out</b>				
<b>900 <u>Other Uses of Funds</u></b>				
939 Other Fund Transfers				723,093.00
<b>Total Other Uses of Funds</b>				<b>\$723,093.00</b>
<b>Total 5200 Interfund Transfers – Out</b>				<b>\$723,093.00</b>

LEA : 125234502 Haverford Township SD

Printed 11/21/2016 1:32:08 PM

General Fund (10)

5230 Capital Projects Fund Transfers

Elementary

Secondary

Federal

Total

900 Other Uses of Funds

939 Other Fund Transfers

723,093.00

**Total Other Uses of Funds**

**\$723,093.00**

**Total 5230 Capital Projects Fund Transfers**

**\$723,093.00**

**Other Capital Projects Fund (39)**

**4000 Facilities Acquisition, Construction and Improvement Services**

**Total**

**400 Purchased Property Services**

450 Construction Services

1,057,840.94

**Total Purchased Property Services**

**\$1,057,840.94**

**Total 4000 Facilities Acquisition, Construction and Improvement Services**

**\$1,057,840.94**



LEA : 125234502 Haverford Township SD

Printed 11/21/2016 1:32:07 PM

Other Capital Projects Fund (39)

4100 Site Acquisition Services – Original and Additional

Elementary

Secondary

Federal

Total

400 Purchased Property Services

450 Construction Services

1,057,840.94

**Total Purchased Property Services**

**\$1,057,840.94**

**Total 4100 Site Acquisition Services – Original and Additional**

**\$1,057,840.94**

	<u>General Fund(10)</u>	<u>Public Purpose Trust(27)</u>	<u>Other Compt Approved (28)</u>	<u>Athletic / Activity(29)</u>	<u>Capital Reserve (690. 1850)(31)</u>
<b>1000 Instruction</b>					
1100 Regular Programs - Elementary / Secondary	41,485,434.02				
1200 Special Programs - Elementary / Secondary	20,783,864.41				
1300 Vocational Education	463,408.24				
1400 Other Instructional Programs - Elementary / Secondary	603,695.06				
1700 Higher Education Programs	1,250,790.00				
<b>Total Instruction</b>	<b>\$64,587,191.73</b>				
<b>2000 Support Services</b>					
2100 Support Services - Students	5,033,007.76				
2200 Support Services - Instructional Staff	3,354,223.55				
2300 Support Services - Administration	4,618,497.87				
2400 Support Services - Pupil Health	2,291,349.77				
2500 Support Services - Business	1,001,755.86				
2600 Operation and Maintenance of Plant Services	8,223,620.97				
2700 Student Transportation Services	4,570,826.96				
2800 Support Services - Central	1,530,180.03				
2900 Other Support Services	115,334.96				
<b>Total Support Services</b>	<b>\$30,738,797.73</b>				
<b>3000 Operation of Non-Instructional Services</b>					
3200 Student Activities	1,249,611.11				
3300 Community Services	205,972.10				
<b>Total Operation of Non-Instructional Services</b>	<b>\$1,455,583.21</b>				
<b>4000 Facilities Acquisition, Construction and Improvement Services</b>					
4100 Site Acquisition Services - Original and Additional					
<b>Total Facilities Acquisition, Construction and Improvement Services</b>					
<b>5000 Other Expenditures and Financing Uses</b>					
5100 Debt Service / Other Expenditures and Financing Uses	10,160,950.88				
5200 Interfund Transfers - Out	723,093.00				
<b>Total Other Expenditures and Financing Uses</b>	<b>\$10,884,043.88</b>				
<b>TOTAL ACTUAL EXPENDITURES &amp; OTHER FINANCING USES</b>	<b>\$107,665,616.55</b>				

	<u>Capital Reserve (1431)(32)</u>	<u>Other Capital Projects Fund(39)</u>	<u>Debt Service(40)</u>	<u>Permanent(90)</u>	<u>Total</u>
<b>1000 Instruction</b>					
1100 Regular Programs - Elementary / Secondary					41,485,434.02
1200 Special Programs - Elementary / Secondary					20,783,864.41
1300 Vocational Education					463,408.24
1400 Other Instructional Programs - Elementary / Secondary					603,695.06
1700 Higher Education Programs					1,250,790.00
<b>Total Instruction</b>					<b>\$64,587,191.73</b>
<b>2000 Support Services</b>					
2100 Support Services - Students					5,033,007.76
2200 Support Services - Instructional Staff					3,354,223.55
2300 Support Services - Administration					4,618,497.87
2400 Support Services - Pupil Health					2,291,349.77
2500 Support Services - Business					1,001,755.86
2600 Operation and Maintenance of Plant Services					8,223,620.97
2700 Student Transportation Services					4,570,826.96
2800 Support Services - Central					1,530,180.03
2900 Other Support Services					115,334.96
<b>Total Support Services</b>					<b>\$30,738,797.73</b>
<b>3000 Operation of Non-Instructional Services</b>					
3200 Student Activities					1,249,611.11
3300 Community Services					205,972.10
<b>Total Operation of Non-Instructional Services</b>					<b>\$1,455,583.21</b>
<b>4000 Facilities Acquisition, Construction and Improvement Services</b>					
4100 Site Acquisition Services - Original and Additional		1,057,840.94			1,057,840.94
<b>Total Facilities Acquisition, Construction and Improvement Services</b>		<b>\$1,057,840.94</b>			<b>\$1,057,840.94</b>
<b>5000 Other Expenditures and Financing Uses</b>					
5100 Debt Service / Other Expenditures and Financing Uses					10,160,950.88
5200 Interfund Transfers - Out					723,093.00
<b>Total Other Expenditures and Financing Uses</b>					<b>\$10,884,043.88</b>
<b>TOTAL ACTUAL EXPENDITURES &amp; OTHER FINANCING USES</b>		<b>\$1,057,840.94</b>			<b>\$108,723,457.49</b>

LEA : 125234502 Haverford Township SD

Printed 11/21/2016 1:32:20 PM

**PSERS Salary Data (Salary Data should relate to the General Fund only)**

<b>Amount Description</b>	<b>Amount</b>
Total Salary Base for salaries subject to PSERS withholding	51,978,740.41
Total Federally Funded salaries subject to PSERS withholding	169,719.28
	<hr/>

**Title I Expenditure Data**

<b>Amount Description</b>	<b>Amount</b>
Expenditures Funded with Current Title I Funds	192,145.87
Expenditures Funded with Carry over Title I Funds	46,584.01
	<hr/>
<b>Total Title I Expenditure Data</b>	<b>\$238,729.88</b>
	<hr/>

**Title I ARRA Amount**

<b>Amount Description</b>	<b>Amount</b>
Portion of Total Title I Expenditures funded with ARRA Title I	<hr/>

**Benefits for Staff Relative to Collective Bargaining Agreements**

	OBJECT	COVERED	NOT COVERED	TOTAL
<b>10 General Fund</b>				
	211 Medical Insurance			
	212 Dental Insurance			
	215 Eye Care Insurance			
	216 Prescription Insurance			
	271 Self-Insurance Medical Benefits	7,102,327.53		7,102,327.53
	272 Self-Insurance Dental Benefits	546,545.52		546,545.52
	275 Self-Insurance Eye Care Benefits			
	276 Self-Insurance Prescription Benefits	2,353,474.65		2,353,474.65
	<b>FUND TOTAL</b>		<b>\$10,002,347.70</b>	
<b>50 Enterprise Fund</b>				
	211 Medical Insurance			
	212 Dental Insurance			
	215 Eye Care Insurance			
	216 Prescription Insurance			
	271 Self-Insurance Medical Benefits	99,714.09		99,714.09
	272 Self-Insurance Dental Benefits	8,055.84		8,055.84
	275 Self-Insurance Eye Care Benefits			
	276 Self-Insurance Prescription Benefits	35,491.44		35,491.44
	<b>FUND TOTAL</b>		<b>\$143,261.37</b>	
<b>60 Internal Service Fund</b>	<b>No Self Insurance data to report</b>			
	211 Medical Insurance			
	212 Dental Insurance			
	215 Eye Care Insurance			
	216 Prescription Insurance			
	271 Self-Insurance Medical Benefits			
	272 Self-Insurance Dental Benefits			
	275 Self-Insurance Eye Care Benefits			
	276 Self-Insurance Prescription Benefits			
	<b>FUND TOTAL</b>			
<b>Total of All Funds</b>		<b>\$10,145,609.07</b>		<b>\$10,145,609.07</b>

LEA : 125234502 Haverford Township SD

Printed 11/21/2016 1:32:21 PM

Function	Special Education (Prior Year)	Nonspecial Education (Prior Year)	Total (Prior Year)	Special Education (Current Year)	Nonspecial Education (Current Year)	Total (Current Year)
2120 Guidance Services	1,169,659.28	1,169,659.28	2,339,318.56	1,260,350.98	1,260,350.97	2,520,701.95
2140 Psychological Services	47,470.61	47,470.60	94,941.21	55,746.15	55,746.15	111,492.30
2150 Speech Pathology and Audiology Services						
2160 Social Work Services	128,280.25	128,280.25	256,560.50	141,776.96	141,776.95	283,553.91
2260 Instruction and Curriculum Development Services	413,363.12	620,044.69	1,033,407.81	363,809.92	545,714.88	909,524.80
2350 Legal and Accounting Services	147,344.91	16,371.66	163,716.57	117,289.65	13,032.18	130,321.83
2420 Medical Services	641,374.62	71,263.85	712,638.47	817,075.62	90,786.18	907,861.80
2440 Nursing Services	274,019.53	822,058.63	1,096,078.16	293,434.02	880,302.09	1,173,736.11
2700 Student Transportation Services	1,807,572.78	2,711,359.16	4,518,931.94	1,828,330.78	2,742,496.18	4,570,826.96
<b>Total</b>	<b>\$4,629,085.10</b>	<b>\$5,586,508.12</b>	<b>\$10,215,593.22</b>	<b>\$4,877,814.08</b>	<b>\$5,730,205.58</b>	<b>\$10,608,019.66</b>

(PRINCIPAL AMOUNTS ONLY)

**ALL GOVERNMENTAL FUND TYPES**

	Short-Term Borrowing	General Obligation Bonds/Notes	Authority Building Obligations	Other Long-Term Debt	Other Post-Employment Benefits (OPEB)	Compensated Absences	Net Pension Liability	Total
1. Debt at Beginning of Fiscal Year		124,403,000.00			319,590.00	1,318,675.00	146,586,000.00	272,627,265.00
2. Additional Debt Incurred During Year					5,662.00	268,446.00	18,745,000.00	19,019,108.00
3. Retirements and Repayments		5,590,000.00						5,590,000.00
4. Debt at End of Fiscal Year		118,813,000.00			325,252.00	1,587,121.00	165,331,000.00	286,056,373.00
5. Accreted Interest at End Of Fiscal Year								
6. Total Debt and Accreted Interest		118,813,000.00			325,252.00	1,587,121.00	165,331,000.00	286,056,373.00
7. Current Portion P&I - Due within 1 year		9,955,145.04						9,955,145.04
8. Interest Paid during current fiscal year		4,270,443.37						4,270,443.37

(PRINCIPAL AMOUNTS ONLY)

**ALL PROPRIETARY FUND TYPES**

- 1. Debt at Beginning of Fiscal Year
- 2. Additional Debt Incurred During Year
- 3. Retirements and Repayments
- 4. Debt at End of Fiscal Year
- 5. Accreted Interest at End Of Fiscal Year
- 6. Total Debt and Accreted Interest
- 7. Current Portion P&I - Due within 1 year
- 8. Interest Paid during current fiscal year

**Total Principal and Interest Payments Made by Your School - All Funds**

Function	Fund		Principal (910)	Principal (920)	Interest (830)	Total (Principal +Interest)	Misc Other Uses (990)
5110	10	General Fund	5,590,000.00		4,270,443.37	9,860,443.37	280,670.94
5110	20	Special Revenue Funds					
5110	30	Capital Projects Funds					
5110	40	Debt Service Fund					
5110	90	Permanent Fund					
5120	10	General Fund					
5120	20	Special Revenue Funds					
5120	30	Capital Projects Funds					
5120	40	Debt Service Fund					

<b>Total Debt Payments - Governmental Funds</b>			<b>\$5,590,000.00</b>		<b>\$4,270,443.37</b>	<b>\$9,860,443.37</b>	<b>\$280,670.94</b>
---	--	--	-----------------------	--	-----------------------	-----------------------	---------------------

Function	Fund		Principal (910)	Principal (920)	Interest (830)	Total (Principal +Interest)
5110	50	Enterprise Fund				
5110	60	Internal Service Fund				
5120	50	Enterprise Fund				
5120	60	Internal Service Fund				

<b>Total Debt Payments - Proprietary Funds</b>						
--	--	--	--	--	--	--



**Bond Details**  
**Governmental Funds**

Debt Category	Debt Issue Date (MM/YYYY)	Principal Amounts Only			Debt at End of Fiscal Year	Current Portion Due Within One Year (Principal and Interest)	Interest Paid During Fiscal Year
		Debt at Beginning of Fiscal Year	Additions	Reductions / Repayments			
General Obligation Bonds/Notes – CIB	03/2012	9,905,000.00		190,000.00	9,715,000.00	393,147.50	200,047.50
General Obligation Bonds/Notes – CIB	01/2013	2,295,000.00		1,045,000.00	1,250,000.00	1,114,737.50	66,087.50
General Obligation Bonds/Notes – CIB	03/2006	13,545,000.00		3,140,000.00	10,405,000.00	3,864,025.00	728,875.00
General Obligation Bonds/Notes – CIB	08/2013	5,663,000.00		108,000.00	5,555,000.00	249,319.50	141,008.70
General Obligation Bonds/Notes – CIB	01/2014	9,900,000.00		2,000.00	9,898,000.00	311,358.20	256,397.05
General Obligation Bonds/Notes – CIB	04/2008	44,320,000.00		345,000.00	43,975,000.00	1,680,121.58	1,285,176.09
General Obligation Bonds/Notes – CIB	06/2010	20,995,000.00		755,000.00	20,240,000.00	1,516,653.26	772,041.53
General Obligation Bonds/Notes – CIB	1/2015	13,545,000.00		5,000.00	13,540,000.00	673,507.50	668,535.00
General Obligation Bonds/Notes – CIB	1/2015	4,235,000.00			4,235,000.00	152,275.00	152,275.00
Compensated Absences		1,318,675.00	268,446.00		1,587,121.00		
Other Post-Employment Benefits (OPEB)		319,590.00	5,662.00		325,252.00		
Net Pension Liability		146,586,000.00	18,745,000.00		165,331,000.00		
<b>Totals for Debt Entered:</b>		<b>\$272,627,265.00</b>	<b>\$19,019,108.00</b>	<b>\$5,590,000.00</b>	<b>\$286,056,373.00</b>	<b>\$9,955,145.04</b>	<b>\$4,270,443.37</b>

**General Fund (10)**

**Section 1: Tuition/Purchased Services as Reported within Expenditure Detail**

	<b>Amount</b>
Tuition Reported in General Fund Expenditures 1000-560	5,716,967.65
Purchased Services in General Fund Expenditures 1000-594 and 1000-597	8,938.22
<b>Section 1 Total</b>	<b>\$5,725,905.87</b>

**Section 2: Tuition Paid to Institution Types During Fiscal Year**

	<b>Tuition Paid For Nonspecial Education</b>	<b>Tuition Paid For Special Education</b>	<b>Total</b>
1 1306 Institutions			
2 Institutionalized Children's Programs			
3 Juveniles Incarcerated in Adult Facilities			
4 Residential Treatment Facilities			
5 Other Local Education Agencies	8,938.22	20,331.75	29,269.97
6 Brick and Mortar Charter Schools			
7 Cyber Charter Schools	312,773.78	162,701.30	475,475.08
8 Career and Technology Centers	463,408.24		463,408.24
9 Approved Private Schools		2,155,537.91	2,155,537.91
10 PA Chartered Schools for the Deaf and Blind			
11 Private Residential Rehabilitative Institutions			
12 Juvenile Detention Centers		7,508.38	7,508.38
13 Special Program Jointures			
14 Other Tuition Not Included Elsewhere In This Section	1,250,790.00	1,343,916.29	2,594,706.29
<b>Section 2 Total</b>	<b>\$2,035,910.24</b>	<b>\$3,689,995.63</b>	<b>\$5,725,905.87</b>

LEA : 125234502 Haverford Township SD

Printed 11/21/2016 1:32:24 PM

**Food Service / Cafeteria Operations Fund (51)**

**3000 Operation of Non-Instructional Services**

**Total**

**100 Personnel Services – Salaries**

100 Personnel Services – Salaries 724,030.02

**Total Personnel Services – Salaries \$724,030.02**

**200 Personnel Services – Employee Benefits**

210 Group Insurance – Contracted Provider 143,441.17

220 Social Security Contributions 54,448.05

230 PSERS Retirement Contributions 191,193.83

**Total Personnel Services – Employee Benefits \$389,083.05**

**300 Purchased Professional and Technical Services**

340 Technical Services 6,640.00

**Total Purchased Professional and Technical Services \$6,640.00**

**400 Purchased Property Services**

430 Repairs and Maintenance Services 19,725.00

440 Rentals 402.18

**Total Purchased Property Services \$20,127.18**

**500 Other Purchased Services**

580 Travel 1,325.88

**Total Other Purchased Services \$1,325.88**

**600 Supplies**

610 General Supplies 35,449.27

630 Food 723,140.08

**Total Supplies \$758,589.35**

**700 Property**

740 Depreciation 29,282.18

**Total Property \$29,282.18**

**800 Other Objects**

810 Dues and Fees 789.45

**Total Other Objects \$789.45**

**Total 3000 Operation of Non-Instructional Services \$1,929,867.11**

**Food Service / Cafeteria Operations Fund (51)**

**3100 Food Services**

Elementary                      Secondary                      Federal                      Total

**100 Personnel Services – Salaries**

100 Personnel Services – Salaries 724,030.02

**Total Personnel Services – Salaries \$724,030.02**

**200 Personnel Services – Employee Benefits**

210 Group Insurance – Contracted Provider 143,441.17

220 Social Security Contributions 54,448.05

230 PSERS Retirement Contributions 191,193.83

**Total Personnel Services – Employee Benefits \$389,083.05**

**300 Purchased Professional and Technical Services**

340 Technical Services 6,640.00

**Total Purchased Professional and Technical Services \$6,640.00**

**400 Purchased Property Services**

430 Repairs and Maintenance Services 19,725.00

440 Rentals 402.18

**Total Purchased Property Services \$20,127.18**

**500 Other Purchased Services**

580 Travel 1,325.88

**Total Other Purchased Services \$1,325.88**

**600 Supplies**

610 General Supplies 35,449.27

630 Food 723,140.08

**Total Supplies \$758,589.35**

**700 Property**

740 Depreciation 29,282.18

**Total Property \$29,282.18**

**800 Other Objects**

810 Dues and Fees 789.45

**Total Other Objects \$789.45**

**Total 3100 Food Services \$1,929,867.11**

	<u>Food Service(51)</u>	<u>Child Care Operations(52)</u>	<u>Other Enterprise(58)</u>	<u>Internal Service(60)</u>	<u>Total</u>
<b>3000 <u>Operation of Non-Instructional Services</u></b>					
3100 Food Services	1,929,867.11				1,929,867.11
<b>Total Operation of Non-Instructional Services</b>	<b>\$1,929,867.11</b>				<b>\$1,929,867.11</b>
<b>TOTAL ACTUAL EXPENDITURES &amp; OTHER FINANCING USES</b>	<b>\$1,929,867.11</b>				<b>\$1,929,867.11</b>