

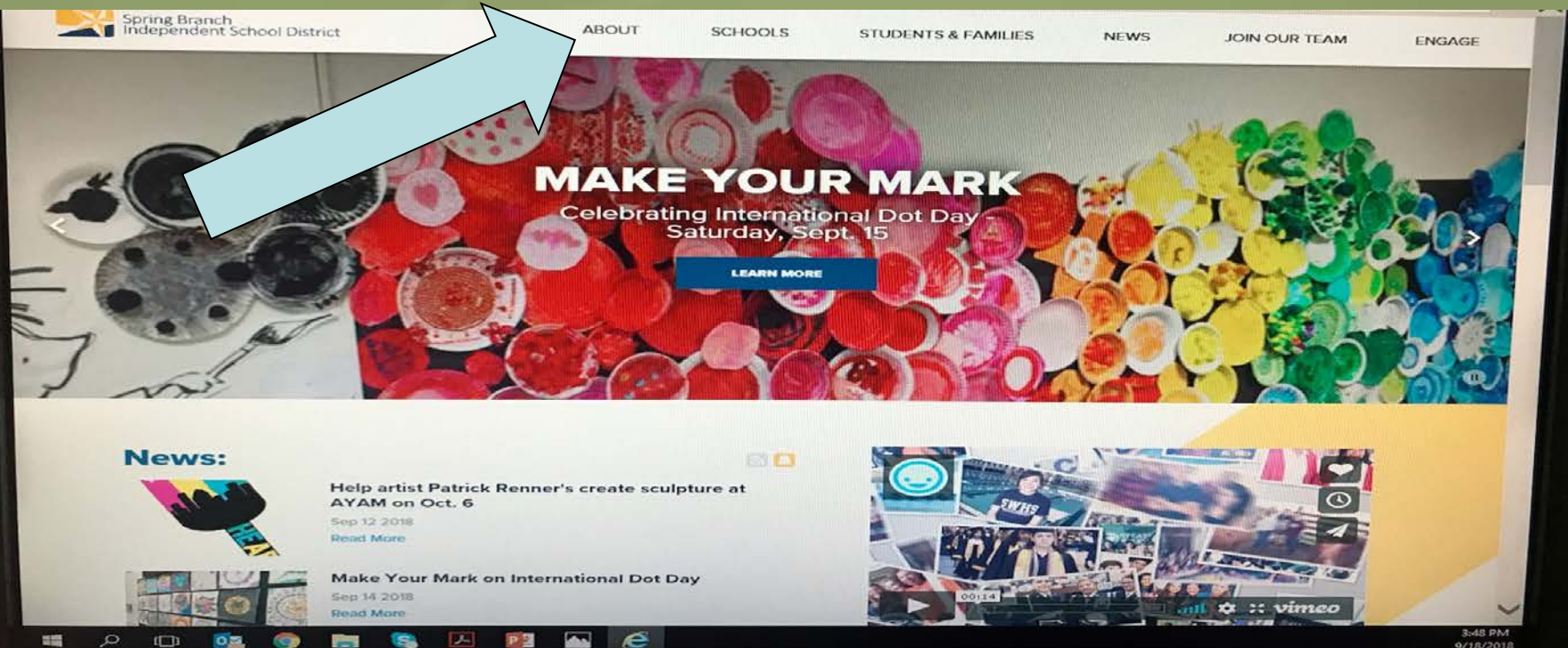
Should I Refer My Child for the GT Program?



Spring Branch ISD
Advanced Academic Studies
713-251-1901

Where to Find Information About the GT Program

The first place to go for information about the Gifted and Talented (GT) Program is the SBISD GT web site:



Spring Branch Independent School District


ABOUT SCHOOLS STUDENTS & FAMILIES NEWS JOIN OUR TEAM ENGAGE


MAKE YOUR MARK

Celebrating International Dot Day
Saturday, Sept. 15

[LEARN MORE](#)

News:

 Help artist Patrick Renner's create sculpture at AYAM on Oct. 6
Sep 12 2018
[Read More](#)

 Make Your Mark on International Dot Day
Sep 14 2018
[Read More](#)

00:14 vimeo

3:48 PM
9/18/2018

Where to Find Information About the GT Program

Another place to go for information about the Gifted and Talented (GT) Program is the SBISD

Facebook: SBISD GT & Advanced Academics



Where to Find Information About the GT Program

The additional place to go for information about the Gifted and Talented (GT) Program is your child's counselor and the Advanced Academic Studies office.

713-251-1901

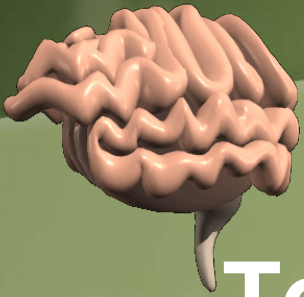


Parent Education Series

Advanced Academics presents a series of sessions throughout the school year on topics of interest to GT/AP parents. Each session is typically offered twice within the same day - once at lunch, once in the evening.

Details are posted on our website in the “Parent Education” section, and also in the monthly e-blast (The Advocate).

What is Gifted & Talented



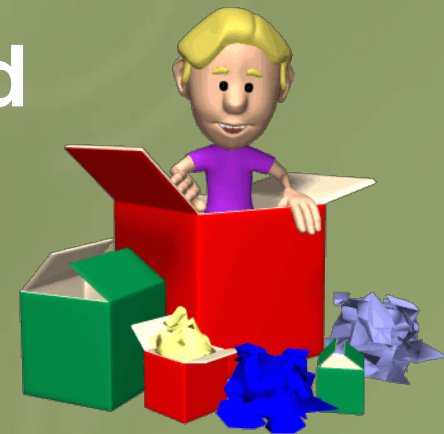
Top 3-5% based on Assessments

All children are gifts;

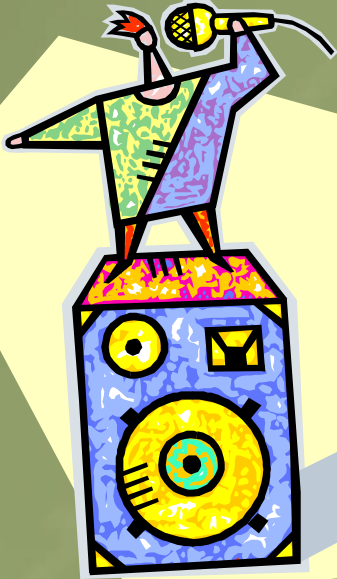
All children have gifts;

Not all children will be identified

Gifted— depending on
identification measures

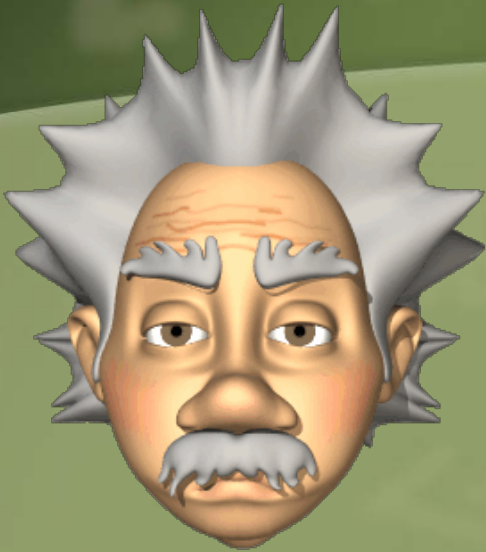


What is Gifted & Talented



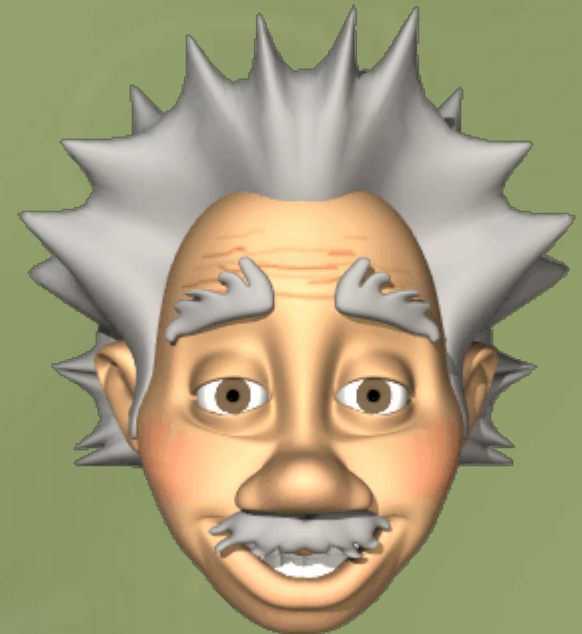
Gifted and talented (GT) people experience the world differently than others.

GT is Different, Not “Better”



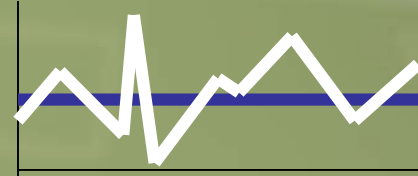
Not Better

What's Appropriate

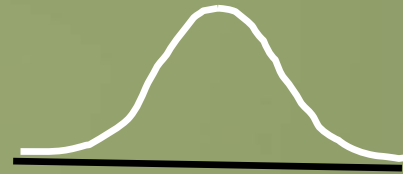


There are four ways GT people are different from others.

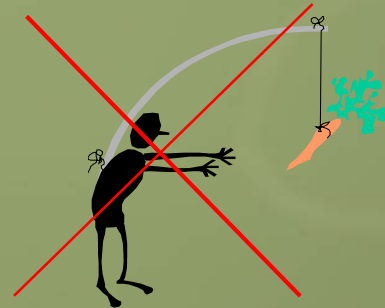
Asynchronous Development



Degree of Giftedness



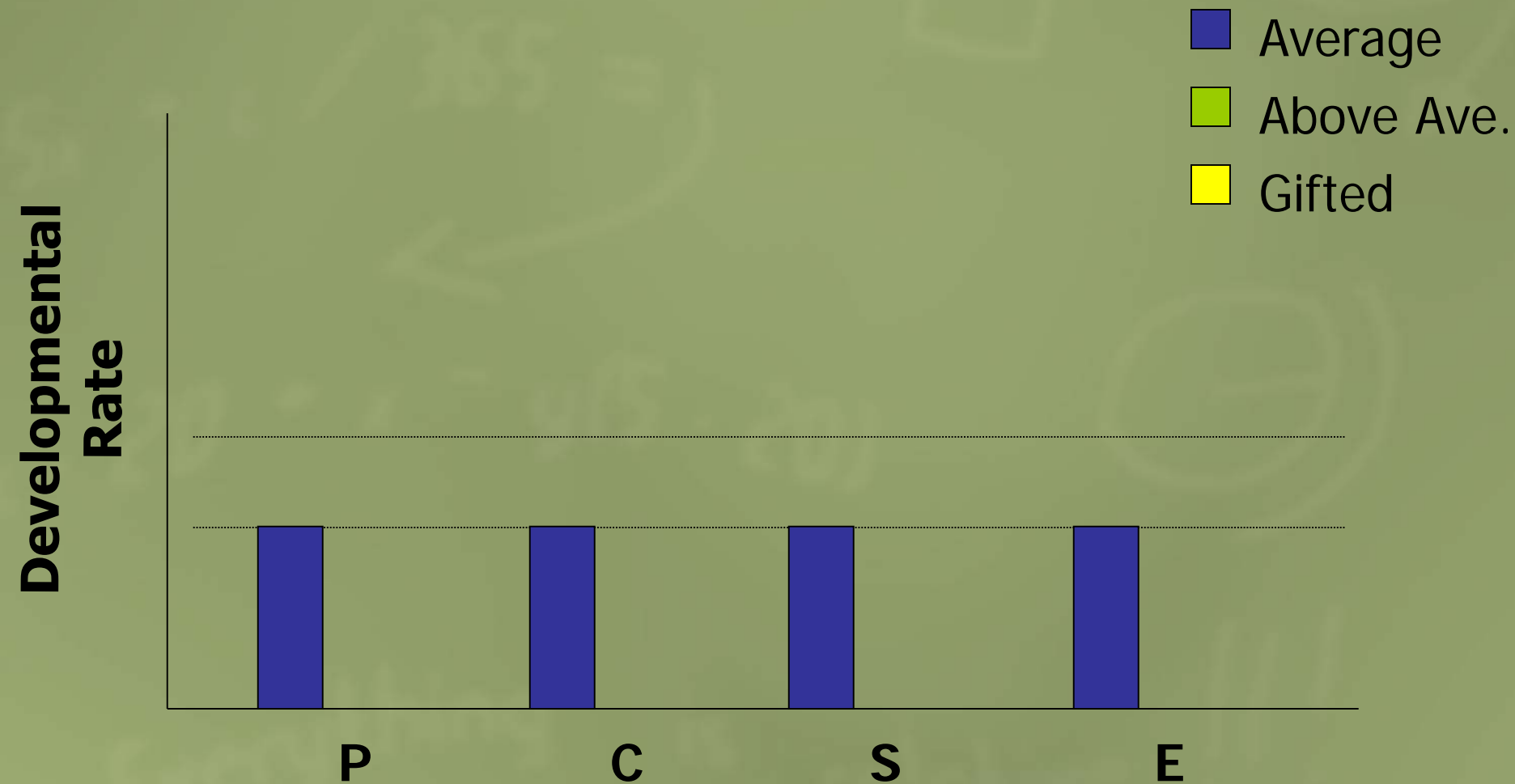
Intrinsic Motivation



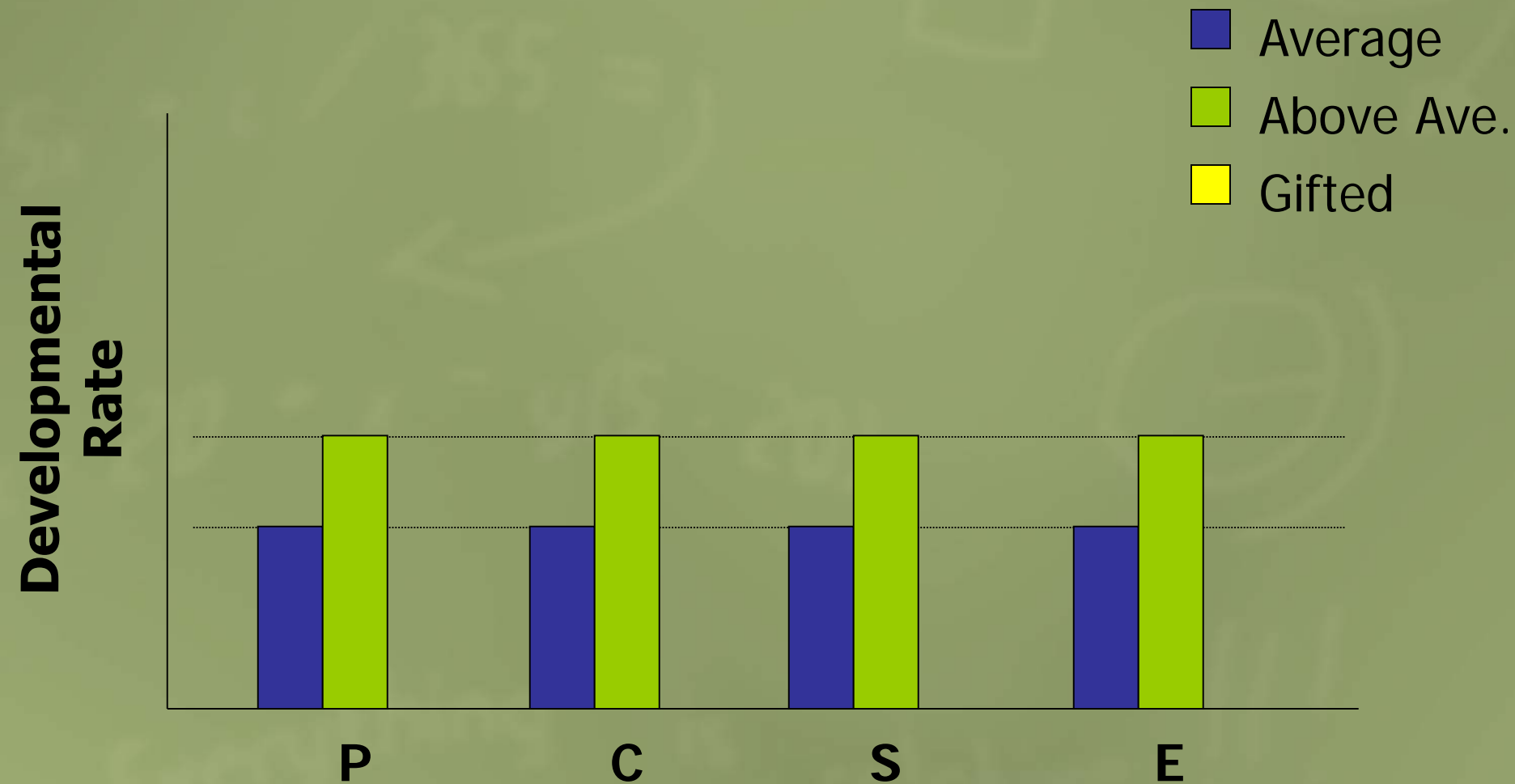
Introversiveness



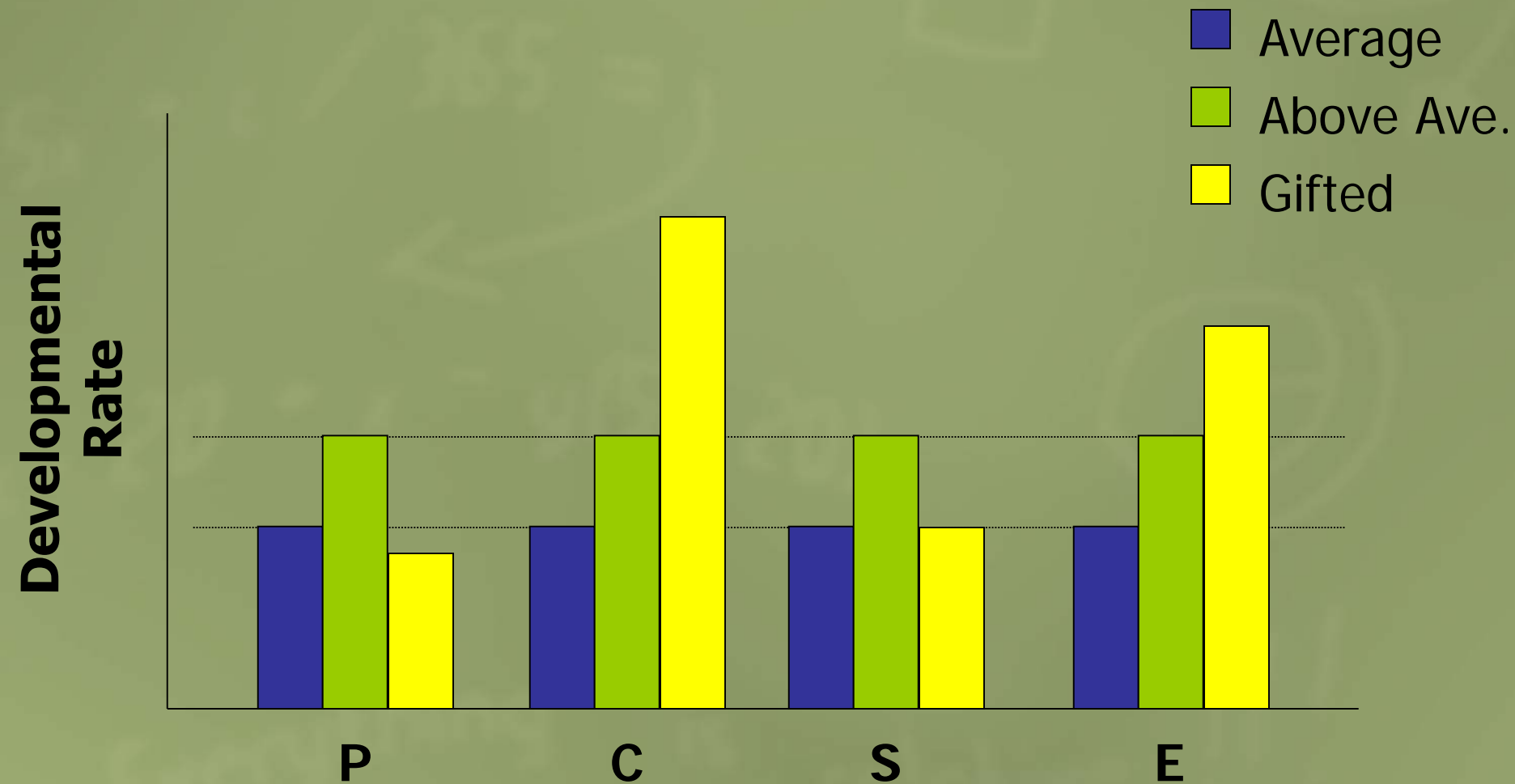
Asynchronous Development



Asynchronous Development

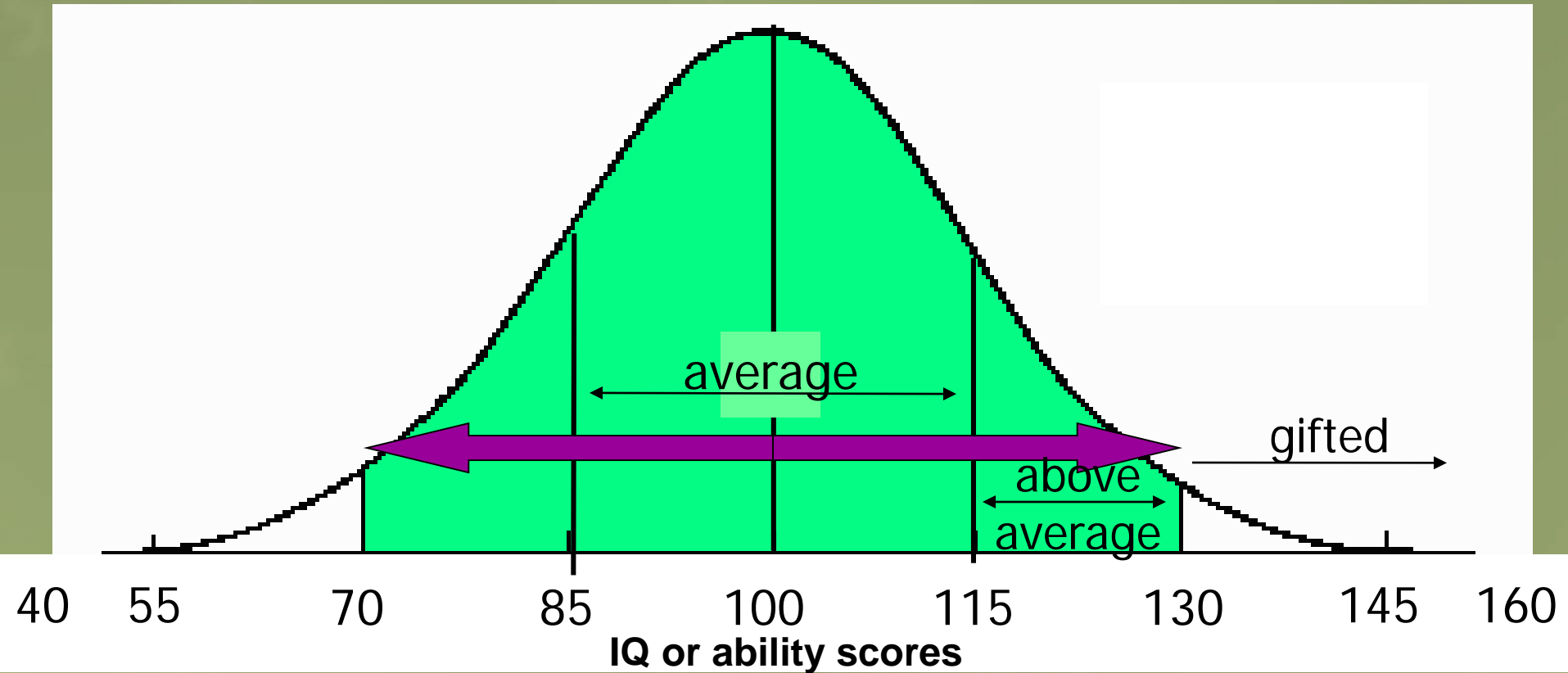


Asynchronous Development



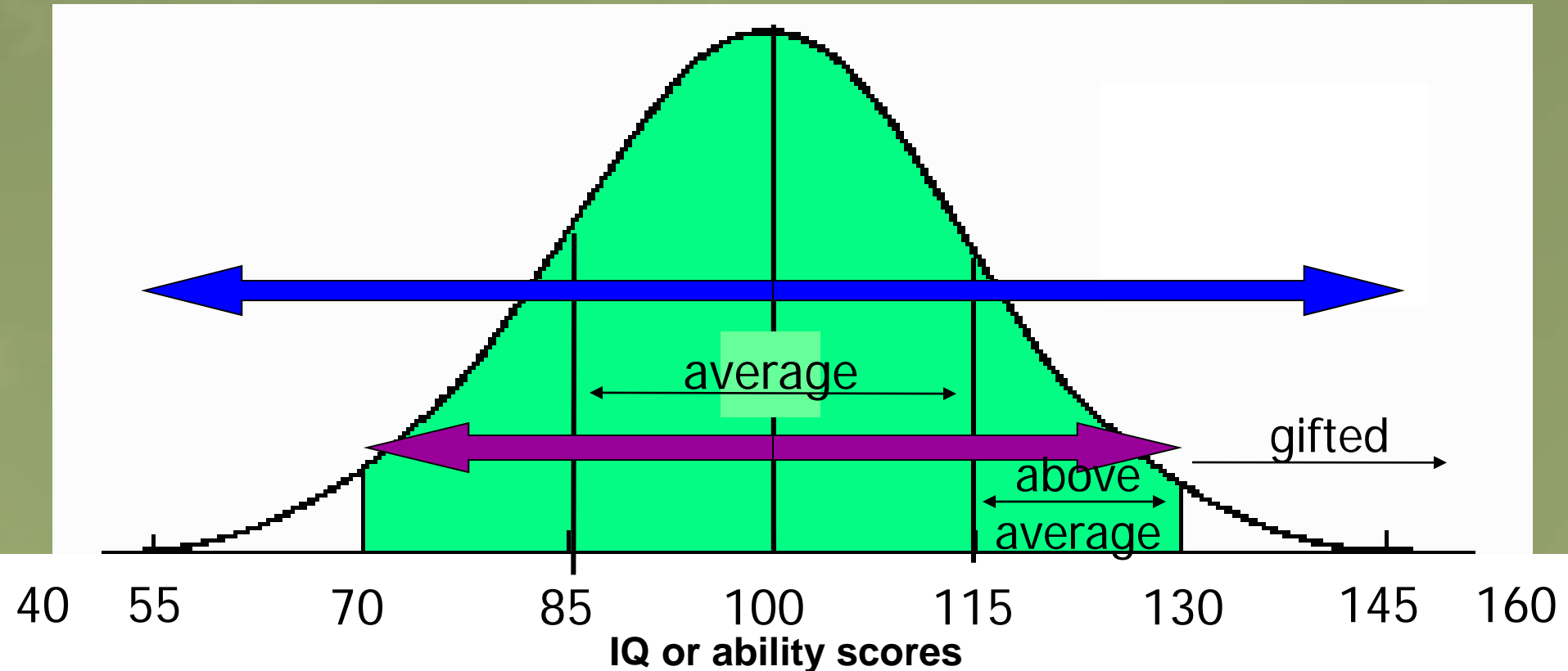
Degree of Giftedness

Degree of giftedness – how far a child is from an average IQ

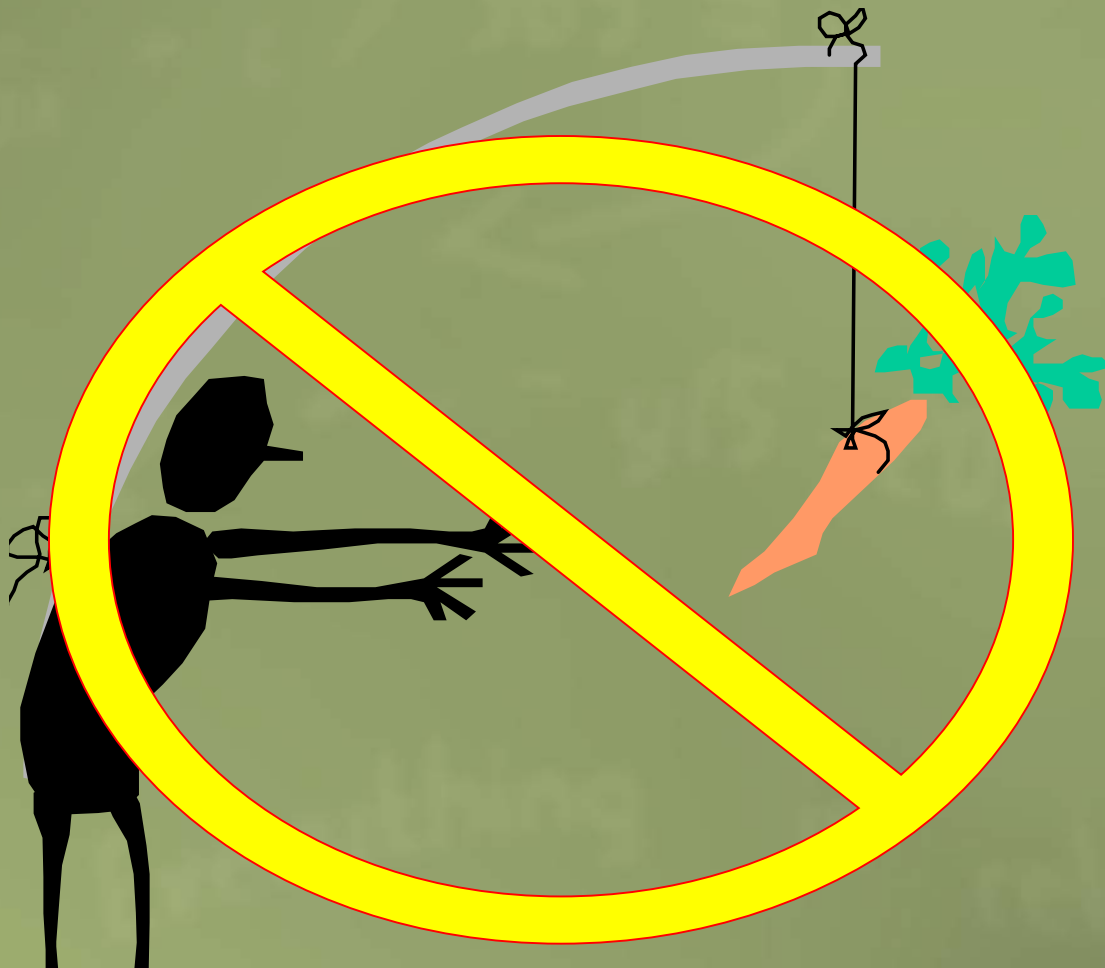


Degree of Giftedness

Degree of giftedness – how far a child is from an average IQ



Intrinsic Motivation

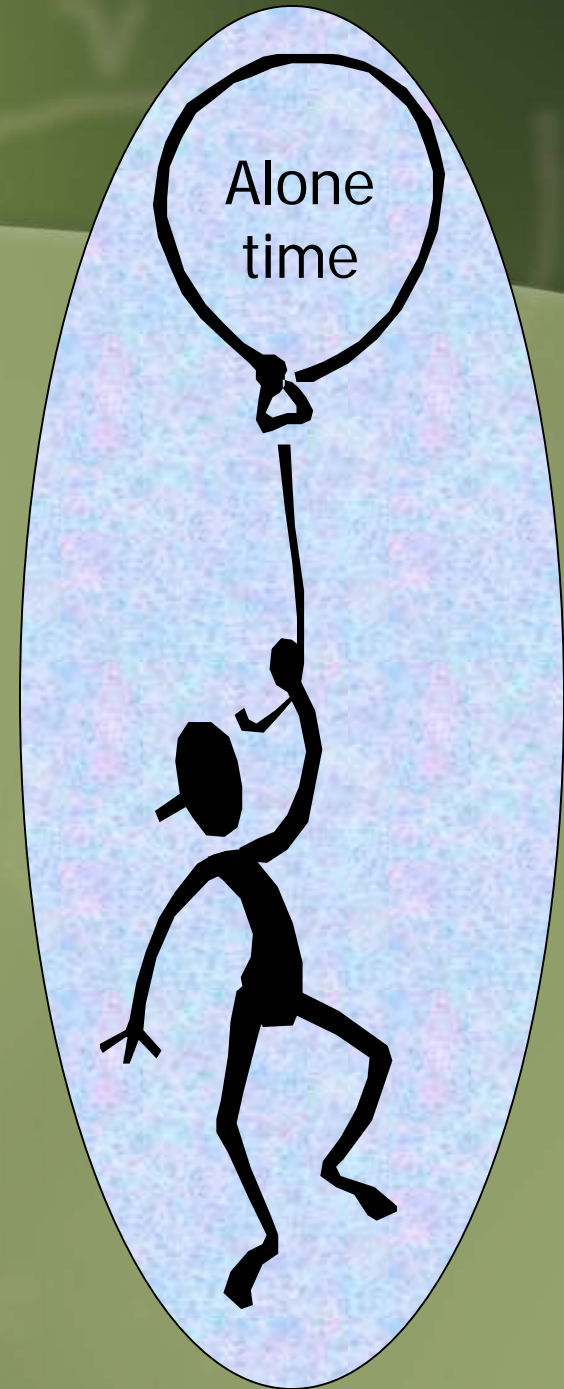


Introversion

From others



Introversions

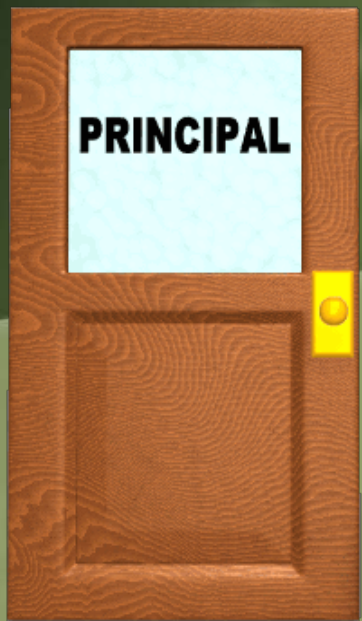




Key to Everything GT

- **Asynchronous Development**
- **Degree of Giftedness**
- **Intrinsic Motivation**
- **Energy from being alone (Introversion)**

Trouble Traits



There are four traits that tend to get gifted people into trouble:

Intensity

Sensitivity

Multi-potentiality or Multi-stimulus

Excessive Energy

Trouble Traits

PRINCIPAL



Gifted kids are
INTENSE!

Trouble Traits

PRINCIPAL



Gifted kids are
SENSITIVE!

Trouble Traits

PRINCIPAL



Gifted kids have
MULTI-POTENTIALITY!

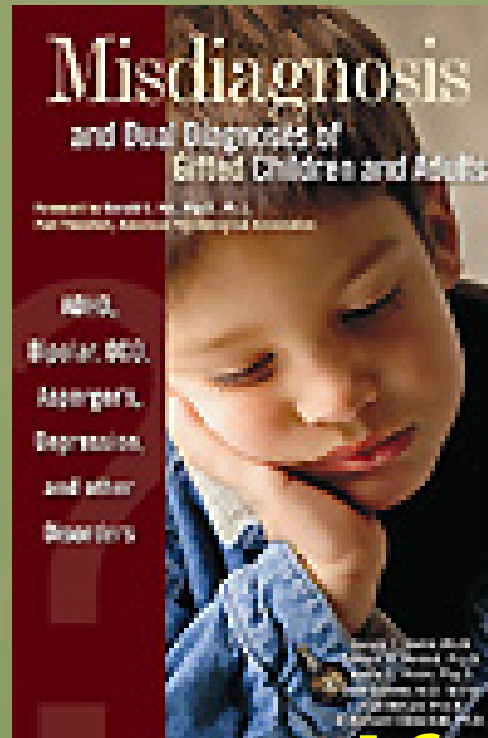
Trouble Traits

PRINCIPAL



Gifted kids have
EXTRA ENERGY!

Trouble Traits



www.sengifted.org.

GT Referral Process



Referral window deadline is _____

<https://sbgifted.schoolmint.net/signin>

GT Identification Process



Level 1 - collected on all referred students

- **Planned Experiences**
- **Teacher Inventory**
- **Parent Inventory/Student Inventory**

To qualify for Level 2, one of these measures must fall in the GT range. Students who do not qualify for Level 2 will not be identified as GT.

GT Identification Process



Level 2 - collected on qualified students

All SBISD students were tested 15-16 in grades 2-7*

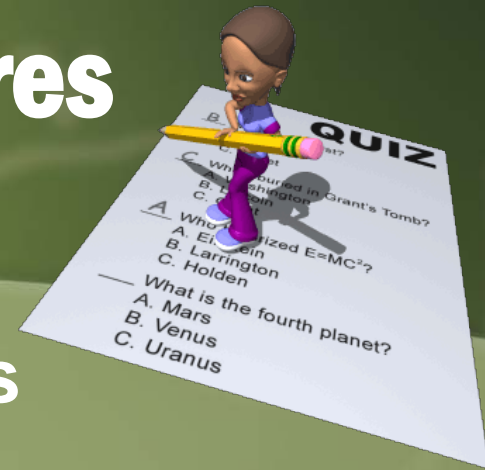
GT Identification Process



**Level 3 – students scoring 140+ in
Level 2**

**Highly Gifted:
Spring Branch Academic Institute**

A Note About Test Scores



Publisher recommendation– 3 years

SBISD-2 year**

Exceptions:

Students may be referred annually, but score will be good for 2 year cycle

If parents want to appeal there must have been a referral...

NO REFERRAL, NO APPEAL

If you think your child may be GT...



The link to Referral Forms is available on our [web page](#) under the Gifted and Talented section.

Make sure to fill out the referral for your child **BEFORE** the deadline if you want your child assessed for the GT Program.

Remember...



If you have questions about the GT program, you can contact the counselor at your child's school, go to our web site...

www.springbranchisd.com

In the Search field, type in Advanced Academics
OR Gifted and Talented



...or call our office 713-251-1901