

WE MAKE  
AN IMPACT  
EVERY DAY.



WE ARE BZAEDS.



BERNARD ZELL ANSHE EMET  
DAY SCHOOL

# OUR MISSION

To teach them diligently - וּשְׁנַנְתֶּם לְבָנֶיךָ

Taken from the Torah, these words emphasize the importance that teaching and learning has had for generations. We use these words to express our enduring commitment to education and to our students who learn as explorers, problem-solvers, academic achievers and creative souls.

"Part of being a leader is understanding responsibility. BZAEDS teaches children how to be responsible: as a child, as a student, as a son/daughter and as a community member."

– JUSTIN ROBINS '93, PARENT AND ALUMNUS

# FROM THE HEAD OF SCHOOL AND BOARD CHAIR

Every day, BZAEDS makes an impact: from the inspiration our exceptional teachers give to the students who attend our school, to the thoughtfulness and talents those students share with the greater community. It's the kind of impact we should never take for granted and that we benefit from each day.

One such day was our inaugural BZAEDS Day of Service 2014, when our entire school community came together in the spirit of *tikkun olam*, the core Jewish value that instructs us to "repair the world." We witnessed the remarkable leadership of our 8th grade class, who planned and led the all-school assembly, volunteered in Early Childhood and Lower School classrooms, and modeled for students and adults alike what all of us can do to make the world a better place for ourselves and others.

Remarkable students like these need remarkable teachers. At BZAEDS, we're proud to attract teachers who are passionate about learning through open-ended exploration. It's the kind of passion evident from the growing number of our teachers achieving National Board Certification to our Early Childhood teachers' work to enhance their students' physical environment and their approach to learning.

It all adds up to a tremendously exciting time for our community. As we look forward to welcoming our new Head of School, Noah Hartman, in the coming year, we'll strengthen our impact with a continued investment in our teachers, the critical difference in how students learn. We'll continue to focus on creative inquiry and in-depth investigation to challenge each child's intellectual potential. And just as we provided tuition assistance to more families than ever this year, we'll keep working to sustain this commitment to our BZAEDS community.



Thank you for your support of and involvement with our school. Together, we'll continue to make the kind of positive impact for which Bernard Zell Anshe Emet Day School is known.

Alyson Horwitz, Ed.D  
Head of School

Michael Pierce '59  
Chair, Board of Trustees

# FROM STUDENTS TO FACULTY, WE NEVER STOP LEARNING

## M’Kom Drisha – Our New Science Lab

In 2014, a major renovation transformed our Middle School science laboratory into M’Kom Drisha – a place of exploration, where students take part in hands-on science investigation in a state-of-the-art space. With cutting-edge laboratory equipment and professional development in science, technology, engineering and mathematics (STEM) education, this bright new space allows our best-in-class science instructors to engage students in an ever-changing world of discovery.

## The Other: Past, Present and Future

An exploration and remembrance of the Holocaust made an impact far beyond the BZAEDS community. Led by middle school teacher Dr. Jeff Ellison in conjunction with JUF, “The Other: Past, Present and Future” was an 8th-grade project that benefitted local Holocaust survivors and set an example for educators nationwide. The project included an evening for students and parents commemorating

Our unrivaled student-teacher ratio  
is the very lowest in the city.

6 to 1  
STUDENTS TEACHER

Kristallnacht, featuring the personal testimony of ten Holocaust survivors. “The Other” culminated in a photo essay exhibition facilitated by BZAEDS artist in residence Alan Teller. Ellison’s article, “Listen to the Echoes: Remembering Prewar Jewish Life through Performance,” was published in *Prism* journal, America’s premier, peer-reviewed journal in Holocaust education, to “note its excellence and use for teachers.”

## National Board Certification

A rigorous process of examining personal teaching performance and applying best

practices, National Board Certification embodies an educator’s expertise, dedication and professional merit. In 2014, three faculty members, teachers Meghan Breyer and Ashley Merced along with current Head of Learning Services Sarah Riggs Johnson, joined our other Board-certified faculty in earning certification. We couldn’t be more proud of their achievement, and are thrilled to anticipate the ripple effect their dedication and learning will have throughout the school.

## Facing History and Ourselves

We are proud in 2014 to have joined as a partnership school with Facing History and Ourselves, a nationally recognized organization whose vision is to bring deeper understanding of shared history to teachers, students and parents. With a specialized program for Jewish day schools, Facing History helps us shape our social studies curriculum all the way from Nursery through 8th grade, with content and resources to educate our children in intriguing and relevant ways.

## Learning Services

Creativity, flexibility, and dedication to students – all three are key to Learning Services at BZAEDS, and even more so during the past year. Thanks to a generous donor, expertise from Trung Le (the architect of M’Kom Drisha), and the hard work of our teachers, the Learning Services Center was reimagined with new furniture, lighting, carpet and color. Now it’s a more learning-friendly space where multiple groups of children can comfortably immerse themselves in diverse activities at the same time.

## Early Childhood & Jewish Studies

With the addition of Hagit Lewis, a dedicated Jewish Studies teacher, our Early Childhood students are exploring Jewish ideas and concepts every day. Lewis is creating new ways for BZAEDS to beautifully merge Jewish learning with traditional school lessons, such as the “All About Me” project, where children created self-portraits with everyday objects, inspired by the work of Israeli artist Hanoch Piven (see below).



“The Drish has transformed how teachers are able to engage students with science, inspiring them to become more creative problem solvers!”

– BETH SANZENBACHER, MIDDLE SCHOOL SCIENCE LEADER



“I’ve become even more of a reflective practitioner, continuing to record my lessons to assess the impact my teaching has on students and to create an even better learning experience.”

– MEGHAN BREYER, 2ND GRADE TEACHER, NATIONAL BOARD CERTIFICATION 2014





# THE GREATEST IMPACT WE HAVE IS ON EACH OTHER

For more than 68 years, BZAEDS has provided students with rigorous general studies and comprehensive Jewish learning through innovative teaching, hands-on exploration and discovery. But the impact we make on our students is only possible because of the support of our entire community – parents, faculty, alumni, grandparents and friends. It’s your connection with BZAEDS that sustains and advances our mission, “to teach them diligently – ושננתם לבניך.”

Donor support provided tuition assistance to 69 students – more than ever before.

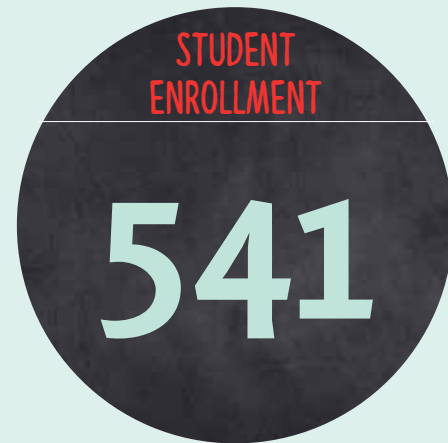


In the 2013-2014 school year, BZAEDS launched a tuition assistance task force of board members and administrators committed to expanding our need-based tuition assistance program.

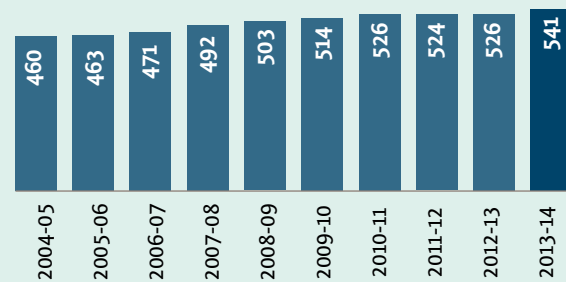
**"We are so thankful for the generosity of the community which has enabled both our children to grow in such a warm and supportive environment."**

– BZAEDS PARENT

The BZAEDS student body continues to grow, reaching a record-high enrollment of 541.



BZAEDS enrollment grew in 2013-2014, with 69 new students and 30 new families. 541 students were welcomed during this school year, and the school continues to experience minimal attrition.



# ALUMNUS PROFILE: AN IMPACT FELT 4,534 MILES AWAY

Tamar Newberger was lining up to dance the Quadrille at the Austrian Embassy in Prague, Czech Republic, when she suddenly thought back to the dances she learned at Shavuot festivals as a student at BZAEDS.

"I was laughing as I was in my long dress doing this Austrian dance," says the 1977 graduate, who moved to Prague with her family when husband Andrew Schapiro was named U.S. Ambassador to the Czech Republic.

"Shavuot is a harvest festival, so the dances would be about wheat and fruit," Newberger continues. "You could not wait to be a 6th grader, where you could wear this toga and do this wheat dance. Or an 8th grader, where you did a partner dance. I can do those dances to this day!"

**"One of the things that kept us in Chicago was how much we liked BZAEDS."**

The school has impacted Newberger's entire family. When daughter Galia Newberger and son Alexander Schapiro were barely old enough for preschool, the family moved from Manhattan to Chicago in part to send the kids to BZAEDS. "I knew it was still an excellent school. We visited it and we loved it," Newberger says. "And one of the things that kept us in Chicago was how much we liked BZAEDS for the kids." They attended the school until the family moved overseas, when Galia was in 8th grade and Alexander in 6th grade.

Newberger appreciates how BZAEDS offers "not just Jewish education, but an integrated Jewish education. You're living and breathing Jewish life and values and teaching, even as you're studying Brown v. Board of Education or Mesopotamia.

"And in terms of academics, it's so strong," she continues. "My kids have had a fantastic foundation for their school here in Prague."

A BZAEDS education also helped Newberger succeed in her later academic and professional



life, graduating from Francis W. Parker School and Barnard College, then becoming a computer scientist. "I was very well prepared as a consequence of being at BZAEDS," she says.

The school also impacted her personal life. "Some of my oldest friends come from BZAEDS. I have a friend who's going to be visiting me in April, somebody I knew from nursery school," Newberger says.

"BZAEDS is very focused on community," she continues. "One thing that is fantastic is Shabbat lunch. As a young student, you're assigned to a Shabbat table where you will have lunch on Fridays for the rest of your time at the school. So you join this table that has 3rd, 4th, 5th, 6th, 7th and 8th graders. It's so nice.

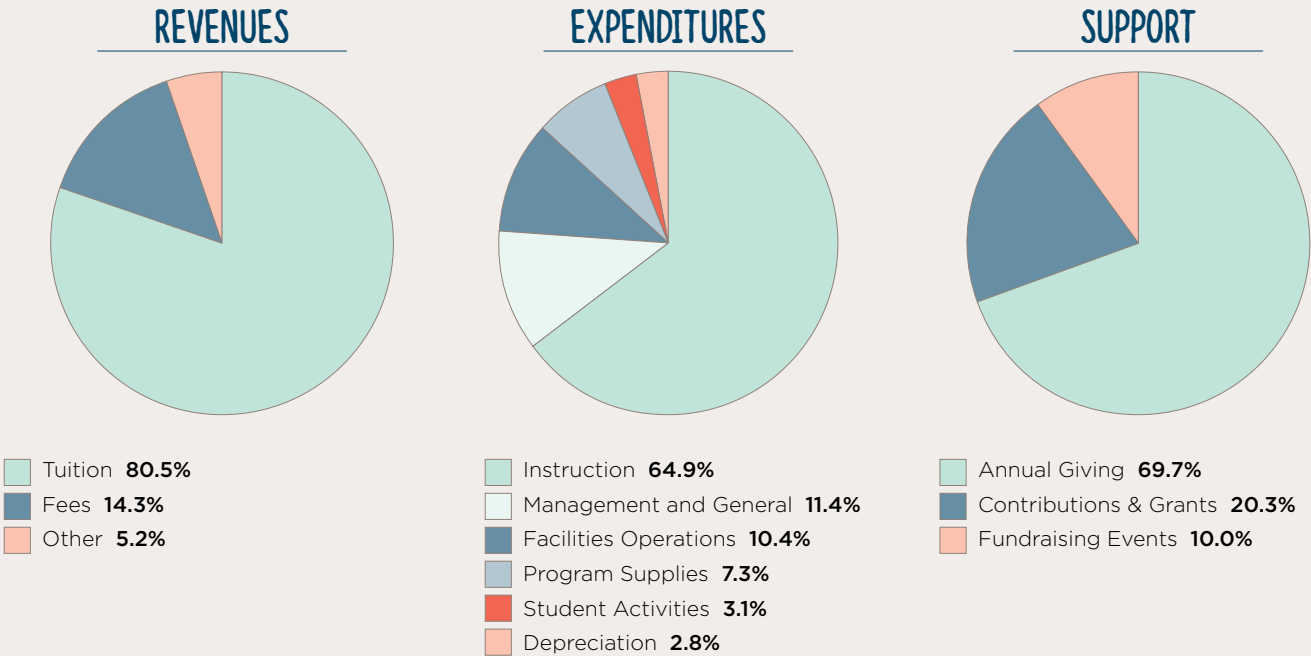
"Once a year, that table becomes the head table at lunch and parents are invited. Think about how great that is," she emphasizes. "It's parents cross-grade. It's kids cross-grade. It's just a lovely thing they do for community-building."

When Newberger is asked to name the most important impact BZAEDS makes on its community, she doesn't choose one thing as much as all of them.

"I would say how almost magically BZAEDS has an emphasis on the arts, an emphasis on secular academics – math, science – and an emphasis on Judaism, and somehow there's enough time in the day to do it all," she says. "It's really pretty remarkable."

# FINANCIAL UPDATE 2013-2014

As in previous years, Bernard Zell Anshe Emet Day School continues to remain strong in terms of enrollment, fundraising and external support. The Board of Trustees, Finance Committee and administration continue to focus on effective and efficient financial management, seeking to support the school's mission and tradition of academic excellence while minimizing increases in tuition.



# FINANCIAL STATEMENT

Audited for the year ending June 30, 2014

**REVENUES**

Program Revenues	
Tuition (Less Tuition Assistance of \$914,358)	\$ 9,693,648
Fees	1,722,712
Auxiliary Services	620,104
<b>Net Operating Revenues</b>	<b>\$ 12,036,464</b>

**EXPENDITURES**

Instructional Programs	
Personnel	\$ 8,517,478
Program Supplies & Services	959,200
Student Activities	405,809
Facilities Operations	1,367,315
Depreciation	367,856
Management & General	1,499,399
<b>Total Program &amp; Management Expenses</b>	<b>\$ 13,117,057</b>
Excess of Expenses over Revenue before Support	\$ (1,080,593)

**SUPPORT**

Annual Giving	\$ 1,233,195
Fundraising Events	176,847
Contributions and Grants	360,119
Fundraising Expenses	(471,739)
<b>Total Support</b>	<b>\$ 1,298,422</b>

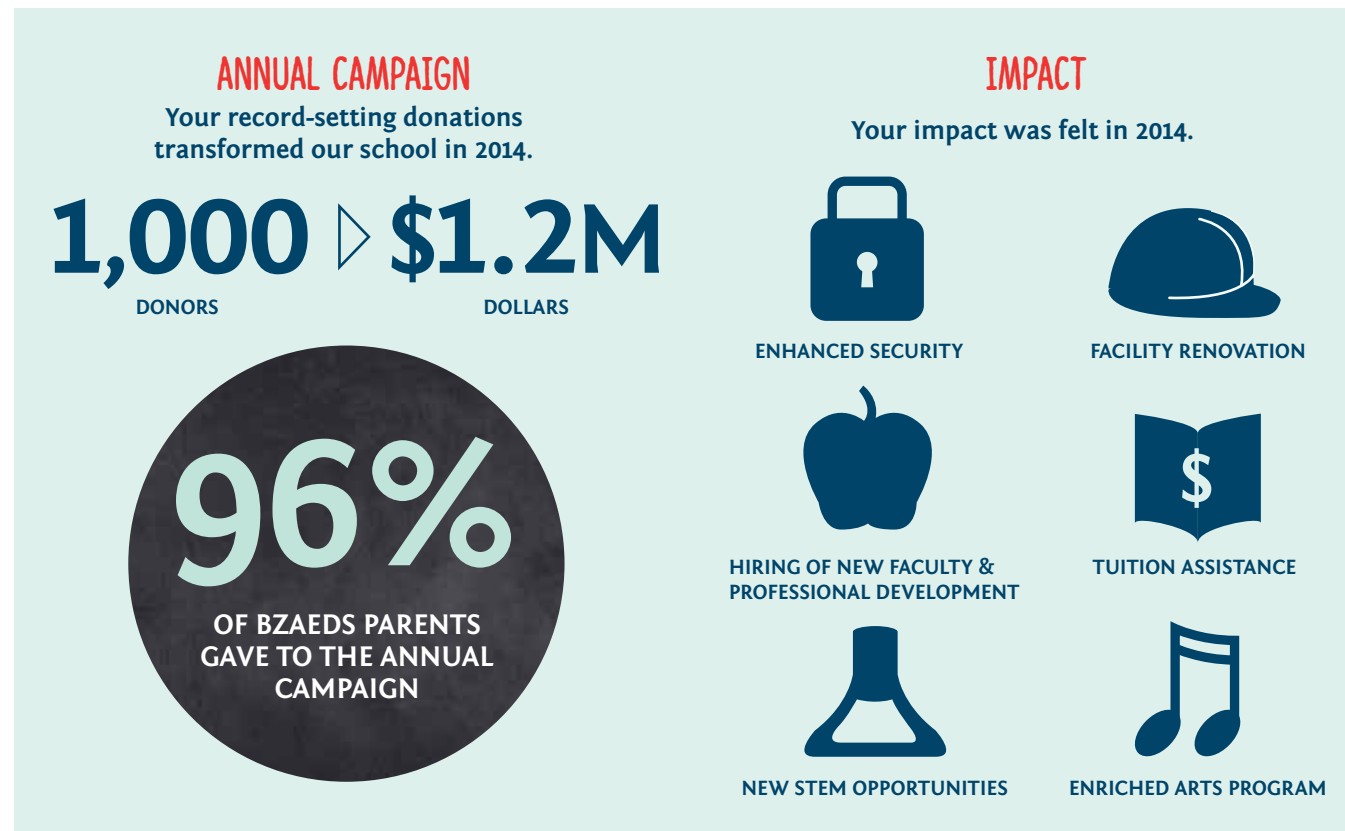
**CHANGE IN NET ASSETS BEFORE INVESTMENT ACTIVITY . . . . \$ 217,829**





# YOUR DONATIONS MADE A TRANSFORMATIVE IMPACT

We are grateful for the support of our generous community including parents, grandparents, alumni and their families, faculty, friends and even students. We also thank the more than 40 volunteers who lead our Development Committee, Annual Campaign, Class Challenge and Annual Fundraiser.



## Rising to the challenge

When offered a challenge grant by a private foundation, our donor community stepped up with generous contributions to fund M'Kom Drisha, our new state-of-the-art science center. Over the past three years, the Annual Campaign and restricted donations have created an exceptional science program, enabling the hiring of science specialists for both Lower and Middle Schools and a complete facility transformation.

BZAEDS was also awarded two special grants in 2014. A music grant funded an artist in residence and special opportunities with Lakeview Symphony Orchestra, while new Passover and Shabbat programming and Family Education experiences were supported by the Breakthrough Fund: An Innovation Fund of the Jewish Federation of Metropolitan Chicago.

# WE RELY ON OUR COMMUNITY

## BOARD OF TRUSTEES 2013-2014

Michael Pierce '59, *Chair*  
Jeff Esser, *Chair Emeritus*  
David "Scooter" Simon, *Vice Chair*  
David Rosenbaum, *Treasurer*  
Fran Block, *Secretary*

Brian Abrahams  
Craig Albert  
Daniel Baskes  
Rosanne Diamond  
Robbin Cohen Gross  
Martin Hauselman  
Dana Hirt  
Janet Kaplan  
Andrew Lucas  
Michael Lufrano '79

Barry Malkin  
Michael Pucker  
Andrea Lavin Solow  
Tamara Sokolec  
Elizabeth Steele Appelbaum  
Rachel Sternberg  
Jill Tanz

### Ex-Officio Members

Alyson Horwitz, *Head of School*  
Rabbi Michael Siegel,  
*Anshe Emet Synagogue*

### Advisory Committee

Ron Galowich  
Stephen Geifman

Harriet Gershman  
Susanne Henry  
Rick Jasculca  
Ray Lavin  
Stanley R. Levy  
Ken Lewin  
Joan Lufrano  
J. Michael Newberger  
Margot Pritzker  
Susan Silver Schonfeld  
Allen Turner  
Sam Zell  
Lois Zoller

### Honorary Trustee

Richard Sager

## MAKE A DIFFERENCE

We are deeply grateful to our community for their voluntary philanthropic support of Bernard Zell Anshe Emet Day School.

### Gifts by Cash, Check or Credit Card

A gift of cash is available immediately for the school's use and is fully deductible from your federal income taxes. Please make checks payable to Bernard Zell Anshe Emet Day School. Pledges made are payable through June 30 of a given school year. A gift also may be made by credit card.

### Online Donations

A gift may be made online at [bzaeds.org/donate](http://bzaeds.org/donate).

### Gifts of Securities

By giving appreciated securities that you have held for one year or more, you avoid a capital gains tax and receive a deduction at full market value on the date of the stock transfer to the school. Please contact the Development Office or visit us online for more information.

### Matching Gifts

Donors may be able to maximize their annual gift by leveraging their corporate matching programs. Please contact the Development Office to assist you with the process.

### Planned Giving

Planned gifts such as bequests, real estate, stocks, life insurance or other assets are not only very generous, but also have potential benefits for a donor as a component of thoughtful estate planning. Create a legacy by making a meaningful contribution, and also maximizing tax and other financial benefits.

### Tributes

Tribute cards offer a thoughtful way to honor a simcha - a bar/bat mitzvah, birthday, anniversary, or graduation - or to send condolences to those who have lost a loved one. Please contact the development office or visit us online at [bzaeds.org/tribute](http://bzaeds.org/tribute) to purchase your tribute cards.

For more information, please contact:

Tali Griffin  
Director of Development  
773.572.1260  
[tgriffin@bzaeds.org](mailto:tgriffin@bzaeds.org)

Visit us at [bzaeds.org/giving](http://bzaeds.org/giving)



בית ספר אנשי אמת ע"ש ברנרד זל

**BERNARD ZELL ANSHE EMET**  
**DAY SCHOOL**

3751 North Broadway Street | Chicago, Illinois 60613 | 773.281.1858 | [www.bzaeds.org](http://www.bzaeds.org)