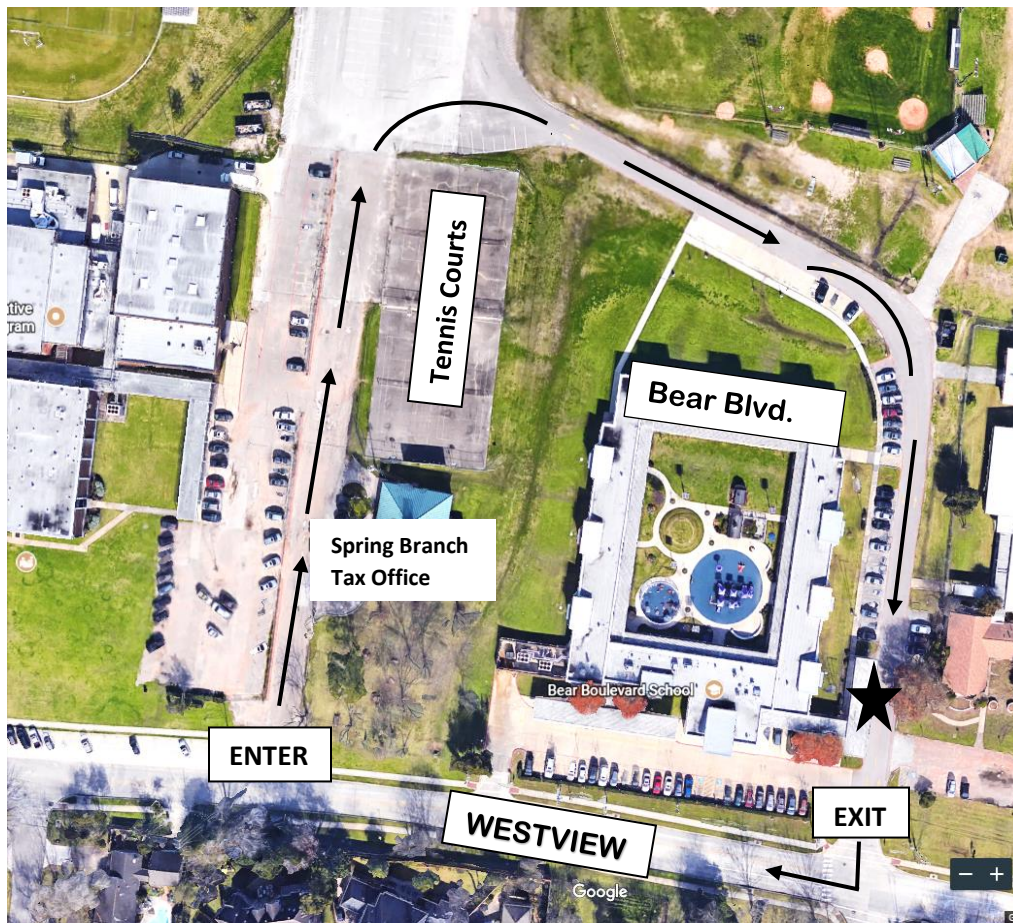


PK 3 - PM Car Rider Line Instructions



Please follow these instructions for our car rider line so that we may get your child to his/her classroom as smoothly as possible. Please use this link to review the car rider video shown at Orientation <https://www.youtube.com/watch?v=d6X0xEF5CVQ>.

At 12:00 PM you may begin entering the building and follow the instructions to get in car rider line.

- While on Westview, enter through the entrance at “Groh Stadium, SBISD Police Department, and Yellow G 107” sign.
- Drive north past the Tax Office headed toward the tennis courts.
- Continue driving to the right around the back of the school, past the parking spaces to the car rider drop off line.
- Pull up slowly and stop next to a waiting staff member.
- Please be sure to have your child seated in the back seat on the passenger side with their name tag on and backpack ready to go. This will help a smooth transition from car to school for everyone.
- At 12:10 PM, the staff member will begin opening the car door so the child can step out of the car. Please do not get out of your car.
- As you exit car rider, while watching for buses and cars entering the parking lot, pull up to the stop sign.
- Turn RIGHT onto Westview to exit and drive safely.