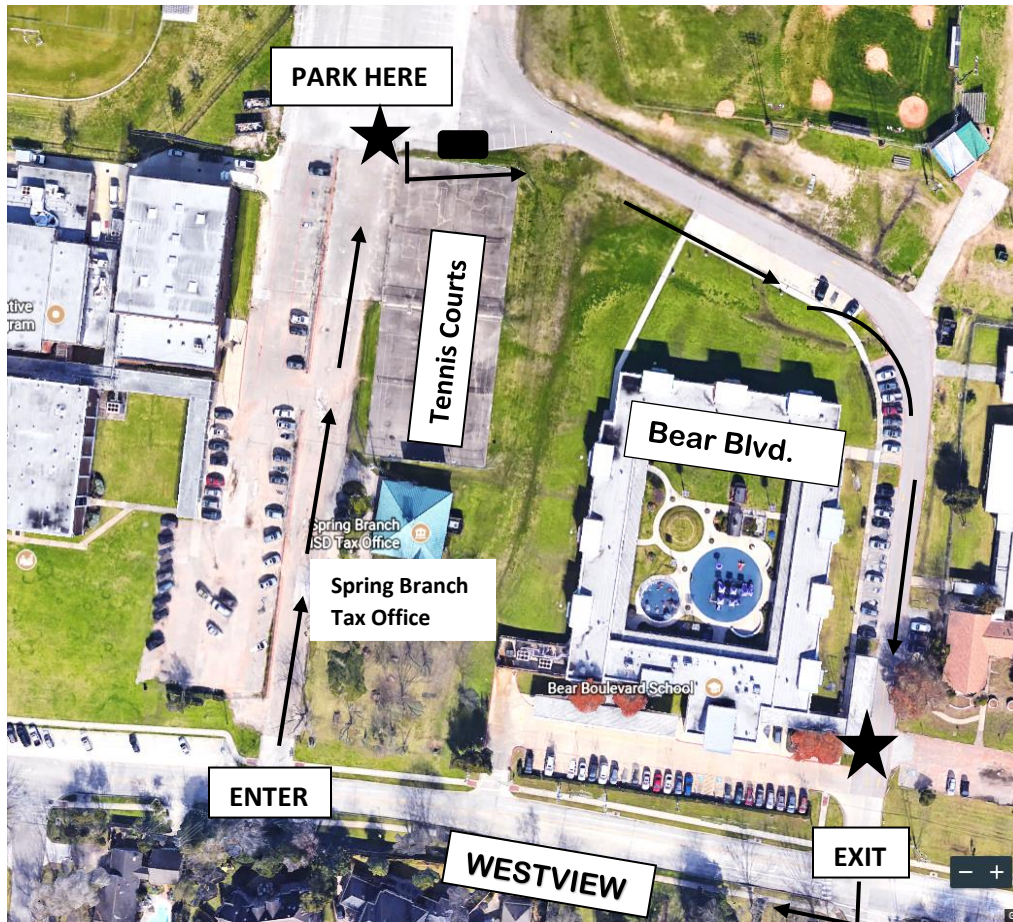


PK 4 & PPCD Car Rider Line Instructions



Please follow these instructions for our car rider line so that we may get your child to his/her classroom as smoothly as possible. Please use this link to review the car rider video shown at Orientation https://www.youtube.com/watch?v=kU2BsK_hVGU.

- While on Westview, enter through the entrance at “Groh Stadium, SBISD Police Department, and Yellow G 107” sign.
- Drive north past the Tax Office headed toward the tennis courts.
- Continue driving until you arrive at the parking spaces located near the open fields and park there.
- **At 8:00 AM**, you may exit the parking lot area and begin driving to the left around the back of the school, past the parking spaces, and into the car rider drop off line.
- Pull up slowly and wait in line until it is time.
- Please be sure to have your child seated in the back seat on the passenger side with their name tag on and backpack ready to go. This will help a smooth transition from car to school for everyone.
- **At 8:05 AM**, the staff member will begin opening the car door so the child can step out of the car. Please do not get out of your car.
- As you exit car rider, while watching for buses and cars entering the parking lot, pull up to the stop sign.
- Turn RIGHT onto Westview to exit and drive safely.