



AVENUES MASTERY ACADEMY

Austin Volz and Tim Carr

Avenues
THE WORLD SCHOOL

A wide-angle landscape photograph showing a lush green valley. In the foreground, there are various tropical plants and trees. The middle ground features rolling hills and a large body of water, possibly a lake or reservoir, surrounded by dense forest. In the background, there are more mountain ranges under a blue sky with scattered white clouds. The text 'AMA OVERVIEW' is centered in the middle of the image.

AMA OVERVIEW

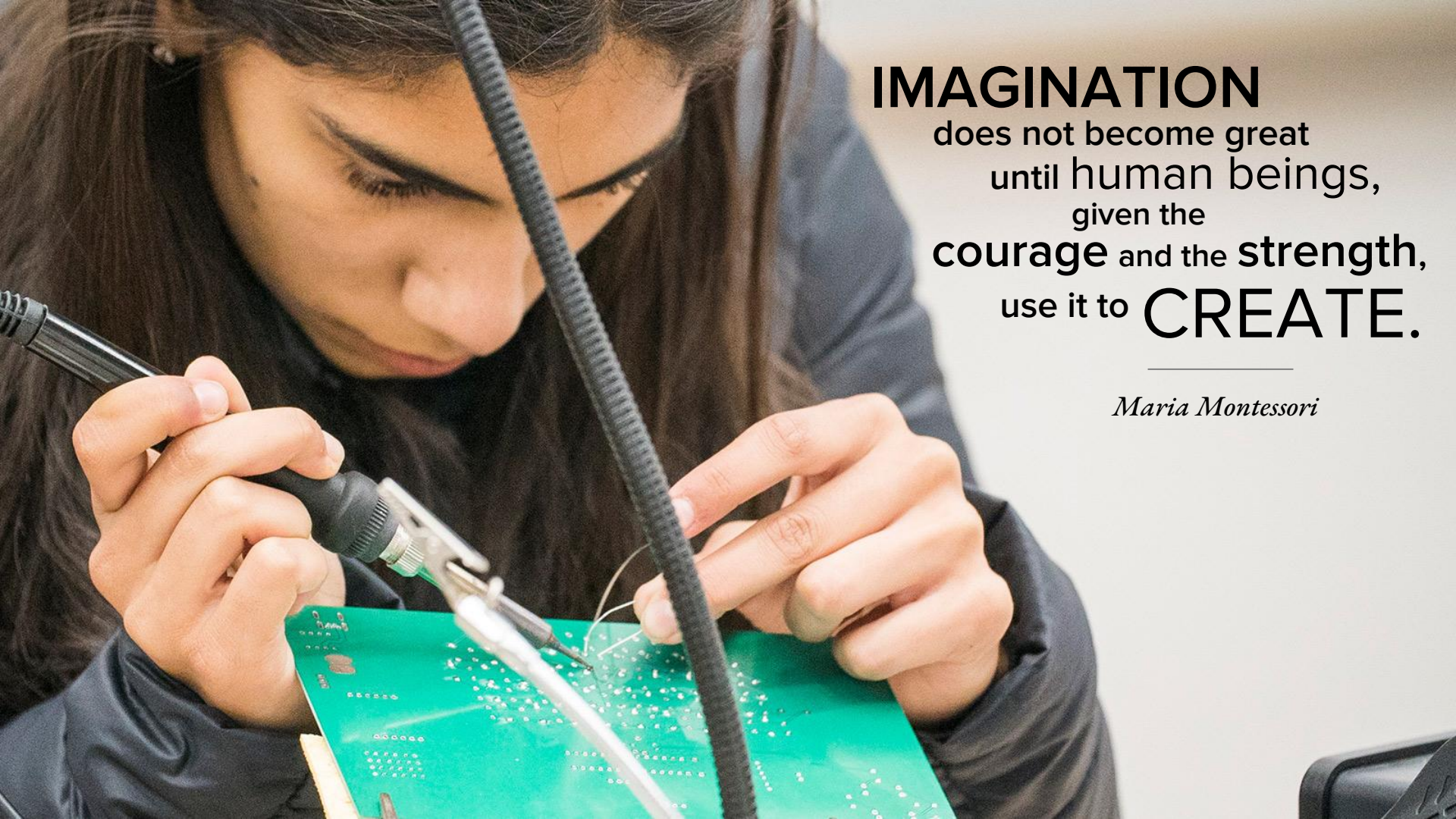
WHY DO WE EXIST?

To develop future world-wise leaders uniquely equipped to understand and solve global-scale problems.



PURSuing A NEW SCHOOL OF THOUGHT

How can real-world learning transform schools?



IMAGINATION

does not become great
until human beings,
given the
courage and the **strength**,
use it to **CREATE.**

Maria Montessori

Avenues World Elements™

The Essential and Enduring Learning Outcomes for Graduates of Avenues: The World School

1 Em EMPATHY E 1 2 3 4 5 6 7 8 9 10 11 12	2 C CREATIVITY E 1 2 3 4 5 6 7 8 9 10 11 12											3 Ab ABSTRACTION E 1 2 3 4 5 6 7 8 9 10 11 12	4 Me METACOGNITION E 1 2 3 4 5 6 7 8 9 10 11 12				
5 Ct CRITICAL THINKING E 1 2 3 4 5 6 7 8 9 10 11 12	6 Ma MENTAL AGILITY E 1 2 3 4 5 6 7 8 9 10 11 12	7 Pl PLANNING E 1 2 3 4 5 6 7 8 9 10 11 12	8 Co CONFIDENCE E 1 2 3 4 5 6 7 8 9 10 11 12											9 H HUMILITY E 1 2 3 4 5 6 7 8 9 10 11 12	10 Ge GENEROSITY E 1 2 3 4 5 6 7 8 9 10 11 12	11 Tr TRUSTWORTHINESS E 1 2 3 4 5 6 7 8 9 10 11 12	12 Gm GLOBAL MINDSET E 1 2 3 4 5 6 7 8 9 10 11 12
13 Hm MENTAL HEALTH E 1 2 3 4 5 6 7 8 9 10 11 12	14 Hp PHYSICAL HEALTH E 1 2 3 4 5 6 7 8 9 10 11 12	15 R READING E 1 2 3 4 5 6 7 8 9 10 11 12	16 W WRITING E 1 2 3 4 5 6 7 8 9 10 11 12	17 O ORATION E 1 2 3 4 5 6 7 8 9 10 11 12	18 Di DISCUSSION E 1 2 3 4 5 6 7 8 9 10 11 12	19 Es ESTIMATION E 1 2 3 4 5 6 7 8 9 10 11 12	20 Mm MEASUREMENT E 1 2 3 4 5 6 7 8 9 10 11 12	21 Pt PATTERN E 1 2 3 4 5 6 7 8 9 10 11 12	22 Ae AESTHETICS E 1 2 3 4 5 6 7 8 9 10 11 12	23 Be BELIEFS E 1 2 3 4 5 6 7 8 9 10 11 12	24 Cs CLASSICS E 1 2 3 4 5 6 7 8 9 10 11 12						
25 Et ETHICS E 1 2 3 4 5 6 7 8 9 10 11 12	26 I IDENTITY E 1 2 3 4 5 6 7 8 9 10 11 12	27 Mn MEANING E 1 2 3 4 5 6 7 8 9 10 11 12	28 Cv CIVILIZATIONS E 1 2 3 4 5 6 7 8 9 10 11 12	29 Cu CULTURES E 1 2 3 4 5 6 7 8 9 10 11 12	30 Ec ECONOMICS E 1 2 3 4 5 6 7 8 9 10 11 12	31 G GEOGRAPHY E 1 2 3 4 5 6 7 8 9 10 11 12	32 T GLOBAL TRENDS E 1 2 3 4 5 6 7 8 9 10 11 12	33 Su SUSTAINABILITY E 1 2 3 4 5 6 7 8 9 10 11 12	34 Bb BIG BANG E 1 2 3 4 5 6 7 8 9 10 11 12	35 U UNIVERSE E 1 2 3 4 5 6 7 8 9 10 11 12	36 So SOLAR SYSTEM E 1 2 3 4 5 6 7 8 9 10 11 12						
37 Ea EARTH E 1 2 3 4 5 6 7 8 9 10 11 12	38 L LIFE E 1 2 3 4 5 6 7 8 9 10 11 12	39 Hu HUMANS E 1 2 3 4 5 6 7 8 9 10 11 12	40 Cl COLLECTIVE LEARNING E 1 2 3 4 5 6 7 8 9 10 11 12	41 Ag AGRICULTURE E 1 2 3 4 5 6 7 8 9 10 11 12	42 In INTERCONNECTIONS E 1 2 3 4 5 6 7 8 9 10 11 12	43 Nh NATIONAL HISTORY E 1 2 3 4 5 6 7 8 9 10 11 12	44 A ATOMS E 1 2 3 4 5 6 7 8 9 10 11 12	45 Cr CHEMICAL REACTIONS E 1 2 3 4 5 6 7 8 9 10 11 12	46 E ENERGY E 1 2 3 4 5 6 7 8 9 10 11 12	47 Mo MOTION E 1 2 3 4 5 6 7 8 9 10 11 12	48 Wa WAVES E 1 2 3 4 5 6 7 8 9 10 11 12						
49 Ce CELLS E 1 2 3 4 5 6 7 8 9 10 11 12	50 Ev EVOLUTION E 1 2 3 4 5 6 7 8 9 10 11 12	51 Eo ECOSYSTEMS E 1 2 3 4 5 6 7 8 9 10 11 12	52 D DESIGN E 1 2 3 4 5 6 7 8 9 10 11 12	53 Ee ELECTRONICS E 1 2 3 4 5 6 7 8 9 10 11 12	54 En ENTREPRENEURSHIP E 1 2 3 4 5 6 7 8 9 10 11 12	55 Mc MACHINES E 1 2 3 4 5 6 7 8 9 10 11 12	56 Mk MAKING E 1 2 3 4 5 6 7 8 9 10 11 12	57 St STRUCTURES E 1 2 3 4 5 6 7 8 9 10 11 12	58 Al ALGORITHMS E 1 2 3 4 5 6 7 8 9 10 11 12	59 Da DATA ANALYSIS E 1 2 3 4 5 6 7 8 9 10 11 12	60 Fn FUNCTIONS E 1 2 3 4 5 6 7 8 9 10 11 12						
61 Md MODELING E 1 2 3 4 5 6 7 8 9 10 11 12	62 Pb PROBABILITY E 1 2 3 4 5 6 7 8 9 10 11 12	63 Rs REASONING E 1 2 3 4 5 6 7 8 9 10 11 12	64 Sm SCIENTIFIC METHOD E 1 2 3 4 5 6 7 8 9 10 11 12	65 Sd SYSTEM DYNAMICS E 1 2 3 4 5 6 7 8 9 10 11 12													

AVENUES NUMBER — 24

ELEMENT SYMBOL — **Cs**

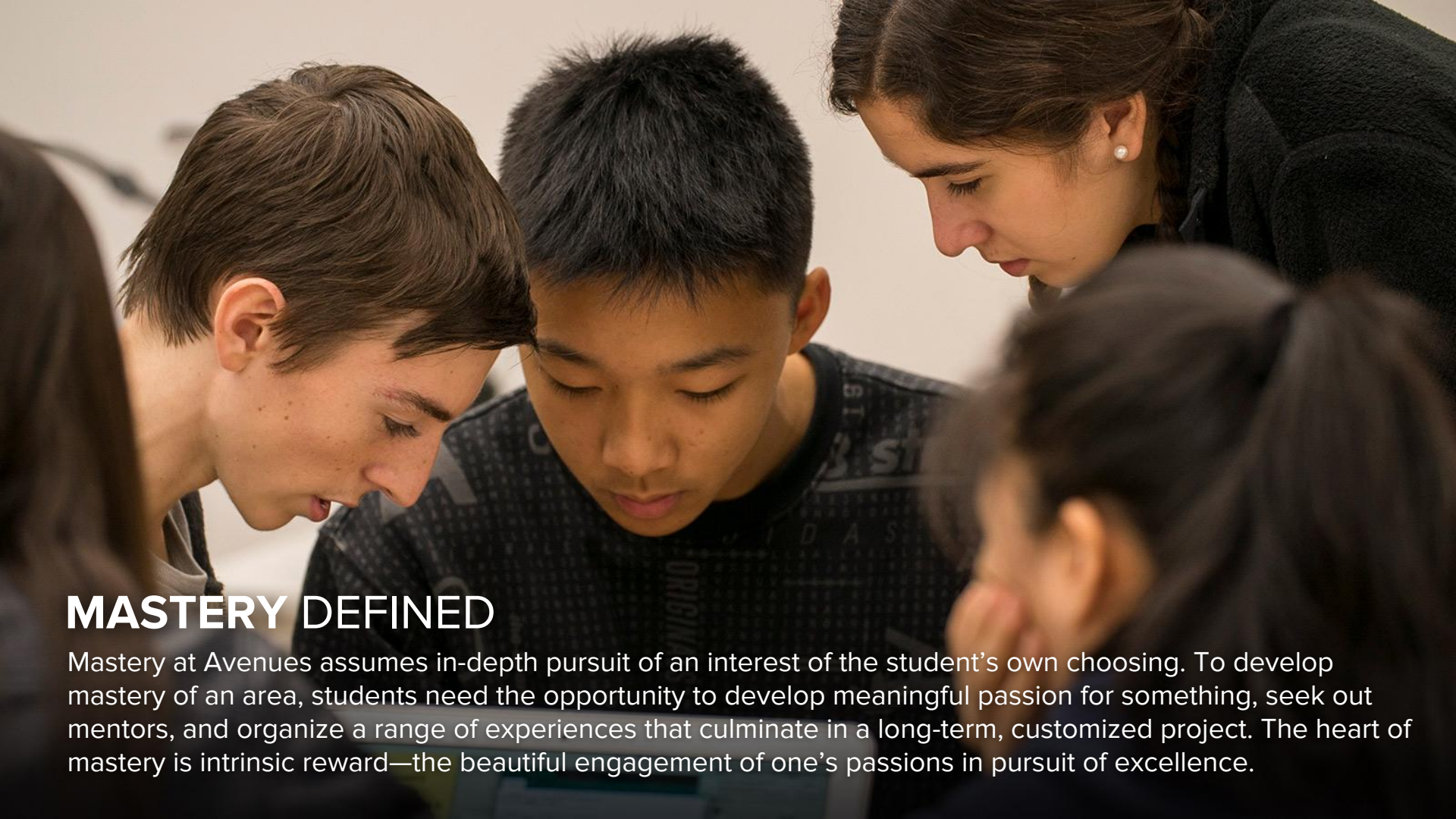
ELEMENT NAME — CLASSICS

GRADE LEVELS — E 1 2 3 4 5 6 7 8 9 10 11 12

- THINKING
- CHARACTER
- WELL-BEING
- UNDERSTANDING
- PURPOSE
- HUMANITY
- BIG HISTORY
- NATURE
- INNOVATION
- INVESTIGATION

LEARNING EXPERIENCES

X EXCHANGE E 1 2 3 4 5 6 7 8 9 10 11 12	Hi HIGH-INTENSITY PRACTICE E 1 2 3 4 5 6 7 8 9 10 11 12	Im IMMERSION E 1 2 3 4 5 6 7 8 9 10 11 12	Ir INQUIRY E 1 2 3 4 5 6 7 8 9 10 11 12	Is INTERDISCIPLINARY STUDIES E 1 2 3 4 5 6 7 8 9 10 11 12	M MASTERY E 1 2 3 4 5 6 7 8 9 10 11 12	Mt MENTORSHIP E 1 2 3 4 5 6 7 8 9 10 11 12	P PLAY E 1 2 3 4 5 6 7 8 9 10 11 12	Pr PROJECTS E 1 2 3 4 5 6 7 8 9 10 11 12	Se SERVICE E 1 2 3 4 5 6 7 8 9 10 11 12	Sa STUDY ABROAD E 1 2 3 4 5 6 7 8 9 10 11 12
--	--	--	--	--	---	---	--	---	--	---



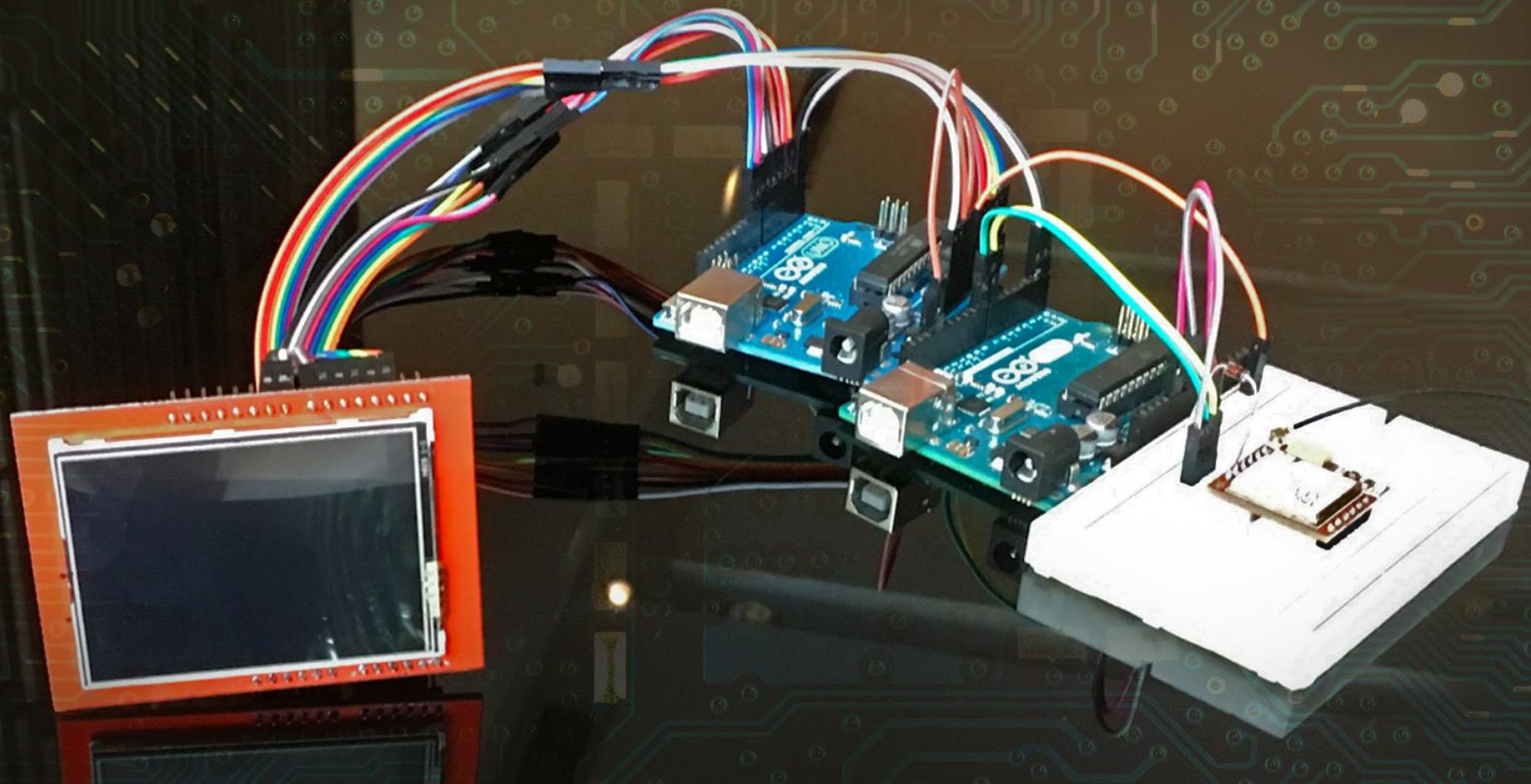
MASTERY DEFINED

Mastery at Avenues assumes in-depth pursuit of an interest of the student's own choosing. To develop mastery of an area, students need the opportunity to develop meaningful passion for something, seek out mentors, and organize a range of experiences that culminate in a long-term, customized project. The heart of mastery is intrinsic reward—the beautiful engagement of one's passions in pursuit of excellence.

SHENZHEN A DAY IN THE LIFE



CREATING CONDITIONS FOR CREATION





DESIGNING REAL-WORLD LEARNING

RESEARCH SUGGESTS...

GOALS

- Making a piano phone
- Making a call and making it sound with the same button
- Play

GREATEST CHALLENGE

- Identifying whether the problem is in software or hardware
- Debugging the code
- Identifying the thing we need to buy in HuangChangBei

WHAT I HAVE DONE
I have researched and prepared for these items, thought of various ways to solve the problem, and made a plan to do it.

WHAT I HAVE LEARNED
I have learned how to use a piano phone, how to make a call, and how to make it sound with the same button.

WHAT I HAVE ACCOMPLISHED
I have successfully made a piano phone, made a call, and made it sound with the same button.

WHAT I HAVE CHALLENGED
I have challenged myself to make a piano phone, make a call, and make it sound with the same button.



PILOTS





AVENUES MASTERY ACADEMY COSTA RICA

Avenues
THE WORLD SCHOOL



RESEARCH ECOSYSTEMS

CLOUD
FOREST

TROPICAL LOWLAND
RAINFOREST

TROPICAL DRY
FOREST

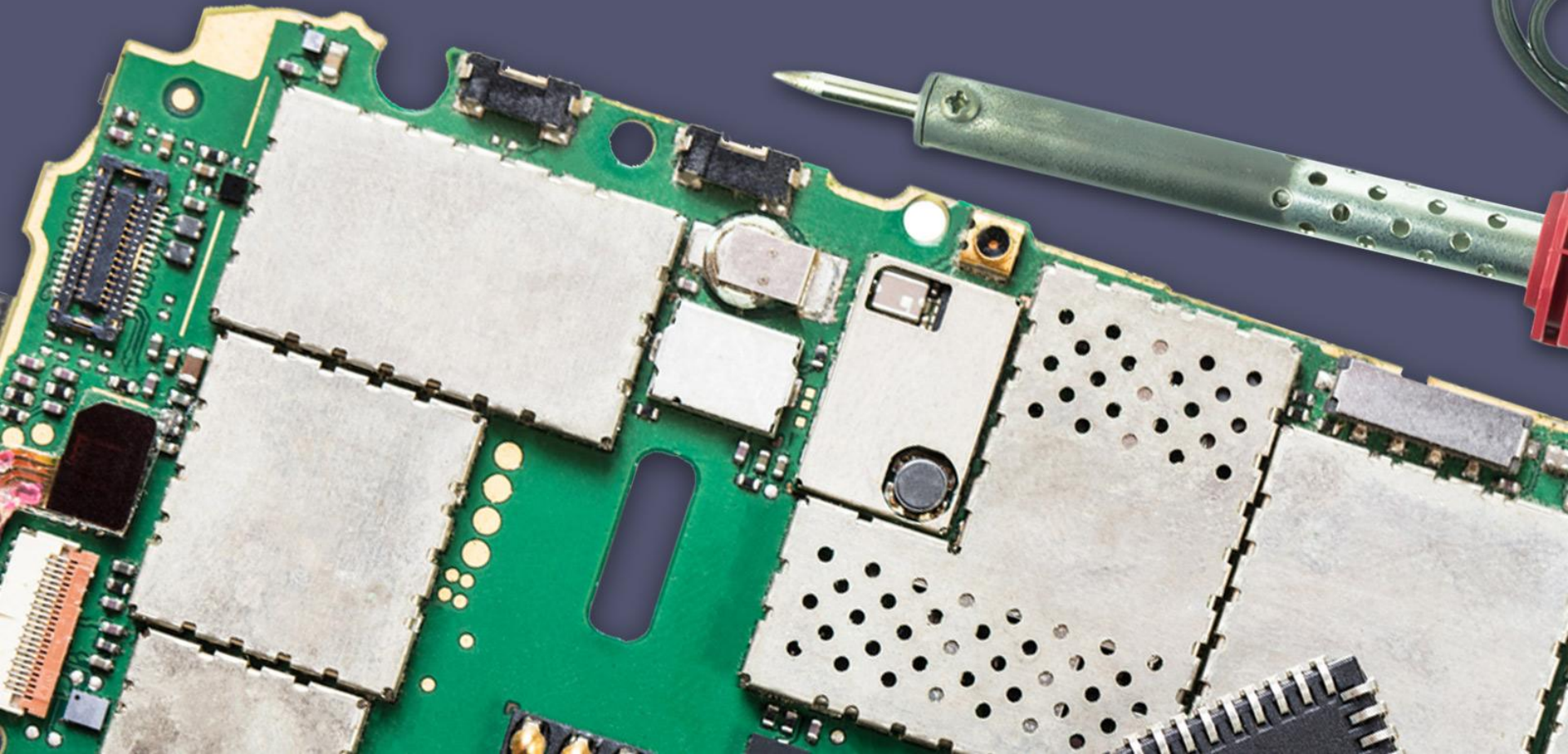
MARINE

HIGH ELEVATION
ELFIN FOREST



PROGRAM RESEARCH & PUBLISH

WHAT HAVE WE LEARNED THUS FAR?



FUTURE GOALS

