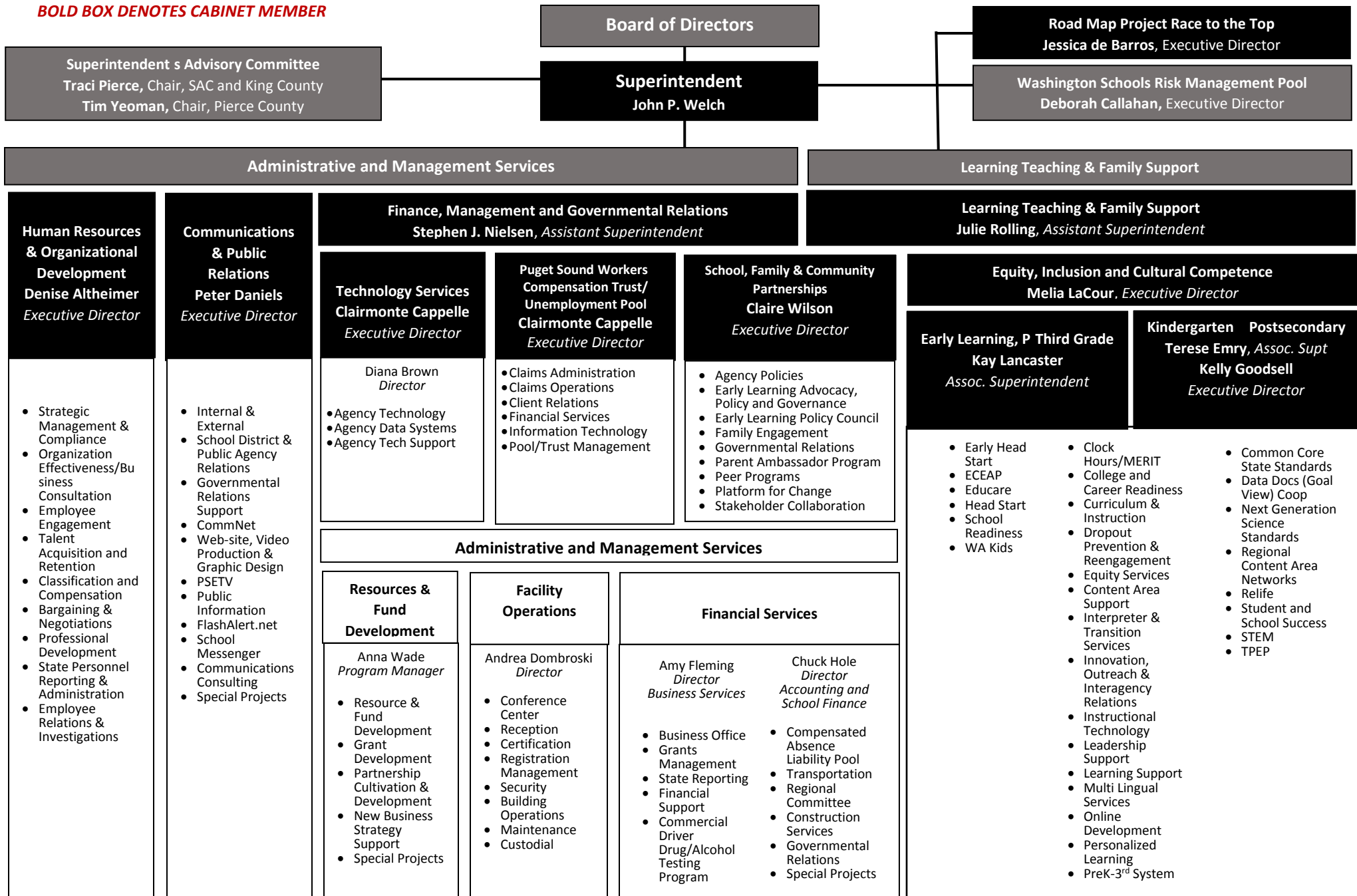




# Organizational Chart 2015-16

END: *Success for Each Child & Eliminate the Opportunity Gap*

**BOLD BOX DENOTES CABINET MEMBER**



**Board of Directors**

**Road Map Project Race to the Top**  
Jessica de Barros, Executive Director

**Superintendent's Advisory Committee**  
Traci Pierce, Chair, SAC and King County  
Tim Yeoman, Chair, Pierce County

**Superintendent**  
John P. Welch

**Washington Schools Risk Management Pool**  
Deborah Callahan, Executive Director

**Administrative and Management Services**

**Learning Teaching & Family Support**

**Human Resources & Organizational Development**  
Denise Altheimer  
Executive Director

**Communications & Public Relations**  
Peter Daniels  
Executive Director

**Finance, Management and Governmental Relations**  
Stephen J. Nielsen, Assistant Superintendent

**Learning Teaching & Family Support**  
Julie Rolling, Assistant Superintendent

**Technology Services**  
Clairmonte Cappelle  
Executive Director

Diana Brown  
Director

- Agency Technology
- Agency Data Systems
- Agency Tech Support

**Puget Sound Workers Compensation Trust/ Unemployment Pool**  
Clairmonte Cappelle  
Executive Director

- Claims Administration
- Claims Operations
- Client Relations
- Financial Services
- Information Technology
- Pool/Trust Management

**School, Family & Community Partnerships**  
Claire Wilson  
Executive Director

- Agency Policies
- Early Learning Advocacy, Policy and Governance
- Early Learning Policy Council
- Family Engagement
- Governmental Relations
- Parent Ambassador Program
- Peer Programs
- Platform for Change
- Stakeholder Collaboration

**Equity, Inclusion and Cultural Competence**  
Melina LaCour, Executive Director

**Early Learning, P Third Grade**  
Kay Lancaster  
Assoc. Superintendent

**Kindergarten Postsecondary**  
Terese Emry, Assoc. Supt  
Kelly Goodsell  
Executive Director

- Strategic Management & Compliance
- Organization Effectiveness/Business Consultation
- Employee Engagement
- Talent Acquisition and Retention
- Classification and Compensation
- Bargaining & Negotiations
- Professional Development
- State Personnel Reporting & Administration
- Employee Relations & Investigations

- Internal & External
- School District & Public Agency Relations
- Governmental Relations Support
- CommNet
- Web-site, Video Production & Graphic Design
- PSETV
- Public Information
- FlashAlert.net
- School Messenger
- Communications Consulting
- Special Projects

**Administrative and Management Services**

**Resources & Fund Development**  
Anna Wade  
Program Manager

- Resource & Fund Development
- Grant Development
- Partnership Cultivation & Development
- New Business Strategy Support
- Special Projects

**Facility Operations**  
Andrea Dombroski  
Director

- Conference Center
- Reception
- Certification
- Registration Management
- Security
- Building Operations
- Maintenance
- Custodial

**Financial Services**

Amy Fleming  
Director  
Business Services

- Business Office
- Grants Management
- State Reporting
- Financial Support
- Commercial Driver Drug/Alcohol Testing Program

Chuck Hole  
Director  
Accounting and School Finance

- Compensated Absence Liability Pool
- Transportation
- Regional Committee
- Construction Services
- Governmental Relations
- Special Projects

- Early Head Start
- ECEAP
- Educare
- Head Start
- School Readiness
- WA Kids

- Clock Hours/MERIT
- College and Career Readiness
- Curriculum & Instruction
- Dropout Prevention & Reengagement
- Equity Services
- Content Area Support
- Interpreter & Transition Services
- Innovation, Outreach & Interagency Relations
- Instructional Technology
- Leadership Support
- Learning Support
- Multi Lingual Services
- Online Development
- Personalized Learning
- PreK-3<sup>rd</sup> System

- Common Core State Standards
- Data Docs (Goal View) Coop
- Next Generation Science Standards
- Regional Content Area Networks
- Relife
- Student and School Success
- STEM
- TPEP