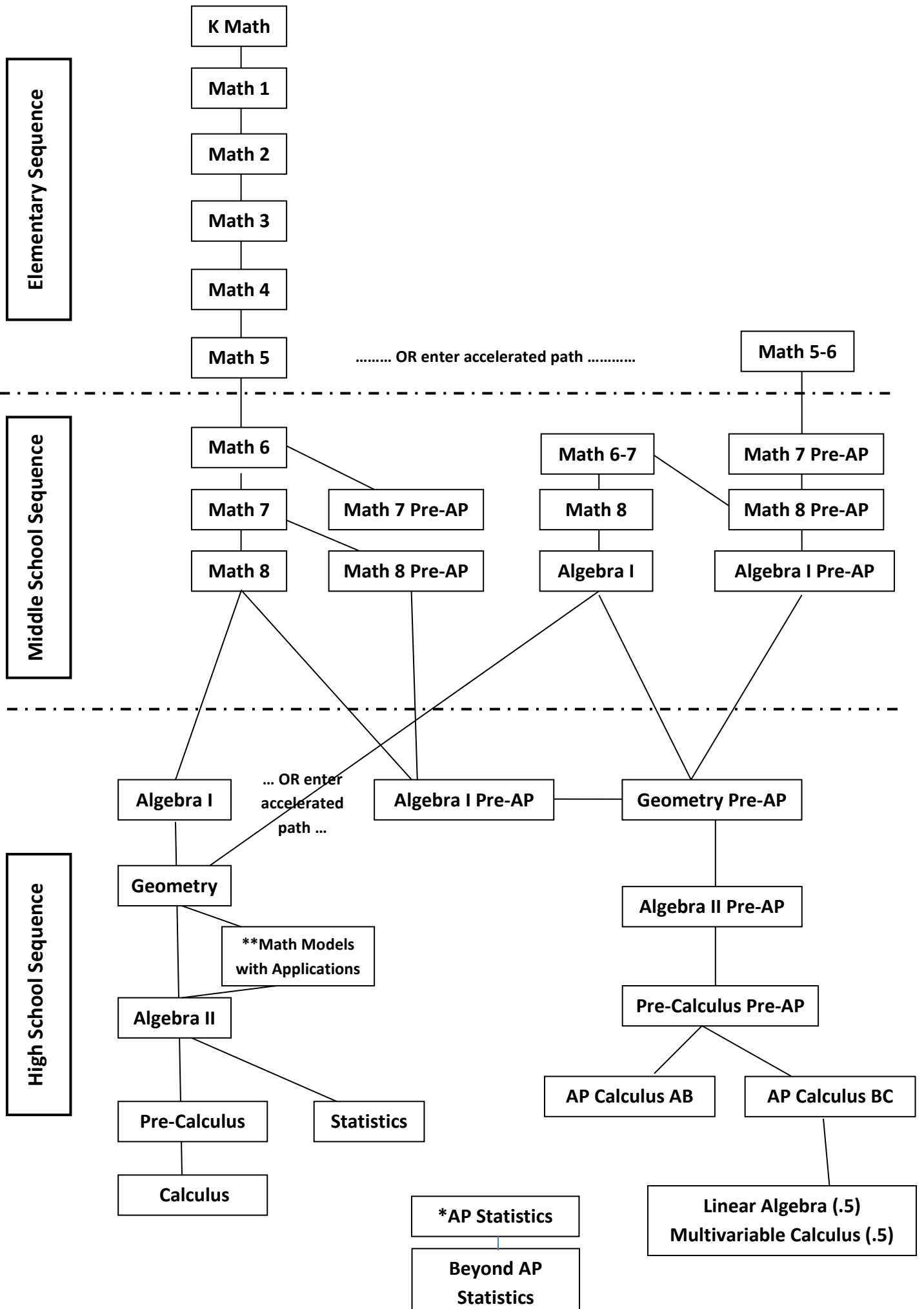


# Eanes ISD Math Course Sequence

## Regular Course Sequence

"OR" indicates decision points to move into an accelerated plan based on data.

## Accelerated Course Sequence



\*AP Statistics may be taken alone or concurrently with other math classes any time after Regular or PreAP Algebra II

\*\*Math Models does not satisfy the admission requirements of most four-year universities.

Eanes ISD expects student enrollment in a math course each year of high school.