

# Canyon Park Middle School

## KNIGHTS

### 6<sup>th</sup> Grade

*Excellence*

*Responsibility*

*Community*

*Respect*



## Course Catalog

### 2018/2019

*Canyon Park Middle School will provide a learning community that is challenging, equitable, empowering, and developmentally responsive to prepare students for high school and beyond.*

## CANYON PARK ADMINISTRATION

Principal	<b>Mr. Sebastian Ziz</b>	(425) 408-6301 sziz@nsd.org
Assistant Principal	<b>Ms. Amber Pacquer</b>	(425) 408-6303 apacquer@nsd.org

## CANYON PARK COUNSELING AND GUIDANCE

Students last name A-D	<b>Ms. Lizzie Ward</b>	(425) 408-6354 <a href="mailto:eward@nsd.org">eward@nsd.org</a>
Students last name E-M	<b>Ms. Elizabeth Methot</b>	(425) 408-6313 emethot@nsd.org
Students last name N-Z	<b>Mr. Paul Narancic</b>	(425) 408-6321 pnarancic@nsd.org
School Psychologist	<b>Ms. Desiree Dutt</b>	(425) 408-6320 ddutt@nsd.org

## REGISTRATION TIPS

Availability of your choices depends on how many students choose each class and if your choices fit together in the schedule. Selecting alternate choices is very important. Students who do not chose alternates will have alternates chosen for them.

**Registration choices are year-long commitments.** Only extenuating circumstances will be considered for switching classes, even at semester. Expect to keep your schedule as is.

## STUDENT DAY

Students will still have six classes each semester. A semester is half of the school year (18 weeks). If it is an elective wheel class, the student will have 2 quarter (9 week classes) long classes instead of a semester long class. We run our classes on a “block schedule,” where students will only go to three long periods every other day on full-length days. On early release days, students will attend all six classes. On full-length days, students will also have a Round Table period at the beginning of the day for doing homework and other school activities. Listed below are the requirements for students in grades 6-8 attending middle schools in the Northshore School District.

### **Grade 6**

2 Sem English  
2 Sem History  
2 Sem Science  
2 Sem Math  
1 Sem Health/Fitness  
3 Sem Elective Wheel

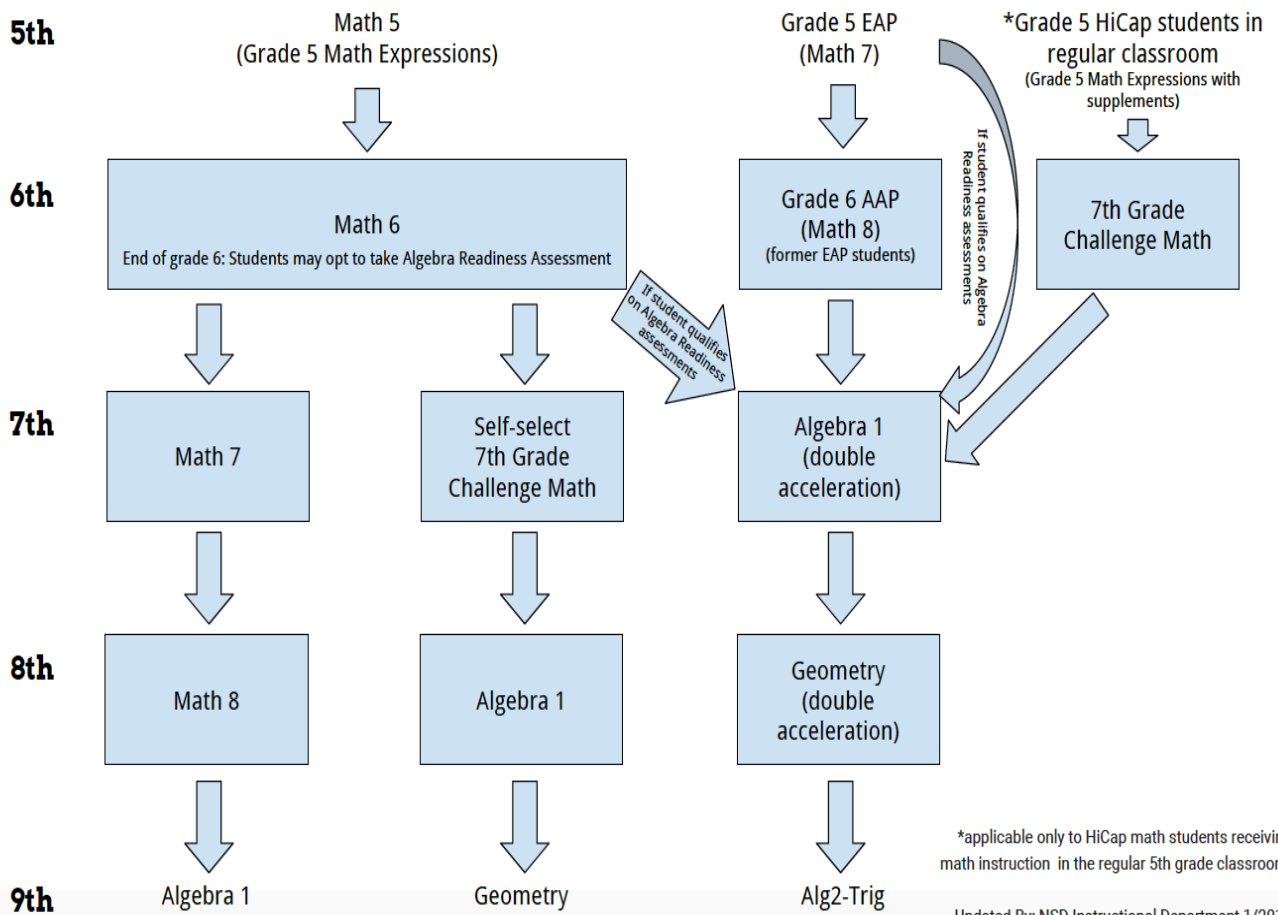
### **Grade 7 and 8**

2 Sem English  
2 Sem History  
2 Sem Science  
2 Sem Math  
1 Sem Health/Fitness  
3 Sem Electives

### **Block Schedule**

<u>Mon/Thurs</u>	<u>Tues/Fri</u>
Round-Table	Round-Table
1 <sup>st</sup> Period	4 <sup>th</sup> Period
2 <sup>nd</sup> Period	5 <sup>th</sup> Period
Lunch	Lunch
3 <sup>rd</sup> Period	6 <sup>th</sup> Period

## Middle School Mathematics



## REQUIRED COURSES

### **6th GRADE CHALLENGE ENGLISH/LANGUAGE ARTS**

This course builds upon previous learning of the Common Core State English/Language Arts (E/LA) Standards in elementary school, prepares students for the Smarter Balanced State Assessments, and establishes the skills necessary for a successful progression of learning to the next grade level of E/LA course work.

The curriculum extends the development of reading, composition, and speaking skills. Sixth grade Springboard instructional materials center upon the theme of Change. Using Advanced Placement (AP) strategies, students are taught to analyze complex fiction and nonfiction from a variety of genres, including longer literary studies of novels and a Shakespearean play, and includes a selection of novels students can choose for independent reading. 6th graders stretch their composition skills by responding to AP style writing prompts. Students actively participate in text-based class discussions and study vocabulary to expand their writing, reading, and speaking skills. Each unit culminates in two comprehensive Embedded Assessments.

### **6<sup>TH</sup> GRADE MATH**

*Equipment: A basic calculator is required.*

This course aligns to the Grade 6 Common Core State Standards for Mathematics and prepares students for the Smarter Balanced state math assessments. The course applies and extends previous understandings of numbers to the system of rational numbers. Students will understand ratio concepts and use ratio reasoning to solve problems. Students will apply and extend previous understandings of arithmetic to algebraic expressions, reason about and solve one-variable equations and inequalities, and represent and analyze quantitative relationships between dependent and independent variables. Other topics include solving real-world and mathematical problems involving area, surface area and volume, developing understanding of statistical variability, and summarizing and describing distributions. Students will continue to develop problem solving, reasoning and proof, communication, and mathematical modeling skills aligned to the Standards for Mathematical Practice.

### **6th GRADE CHALLENGE SOCIAL STUDIES**

6th grade Ancient and Medieval World History is a year-long course covering the history of the world from its beginnings to 1450 CE. During this year at least six major world civilizations will be studied in-depth focusing on deepening students understanding

of the Earth and its peoples through the study of history, geography, politics, culture, and economic systems from different regions of the world. Students will analyze the interactions among various cultures, emphasizing their enduring contributions and the link between the contemporary and ancient worlds.

This course addresses Common Core State Standards for History, prepares students for the Smarter Balanced State Assessments, and establishes social studies skills necessary for a successful progression of learning to the next grade level of social studies course work.

### **6th GRADE CHALLENGE INTEGRATED SCIENCE**

Based on the Next Generation Science Standards (Washington State Student Learning Standards) performance expectations for middle school science. Students will engage in science and engineering practices as they learn about disciplinary core ideas within the realm of cells, properties of matter, organisms, energy, and weather and climate. Students will also be learning important cross-cutting concepts that include: patterns, structure and function, systems and system models.

### **HEALTH AND FITNESS 6** (semester course)

**GOALS:** Health Fitness is a required semester class focusing on the concepts of health and fitness and how they relate to a teenager for a healthy lifestyle. Emphasis is on the need for physical activity, balanced nutrition, healthy relationships, communication, appropriate decision-making, refusal skills, hygiene, self-esteem, and stress management. Students will be in the classroom and in an activity-based setting. Cardio-respiratory activities will be a minimum of one day per week. Sports/activities vary depending on season, weather, and available teaching areas.

**SKILLS:** Critical thinking and problem solving for a healthy lifestyle, continued development of physical skills for lifetime participation in a variety of sport fitness, and rhythmic activities, and knowledge and application of rules for various individual sports, team sports, and cardio-respiratory monitoring activities.

**ASSIGNMENTS:** Daily participation in various fitness, rhythmic, sports and classroom based activities. Includes written assignments, projects, tests, homework, etc. Students will be required to complete various assessments dealing with fitness performance and fitness comprehension.

## AAP OPTIONS

**\*\*Students must qualify for placement by participating in the EAP program in elementary school or through a highly capable application and testing process, which is initiated in the fall at the District. This is not a self-select course: students will be individually scheduled for this course.**

### AAP 6<sup>TH</sup> ENGLISH/LANGUAGE ARTS

This course builds upon previous learning of the Common Core State English/Language Arts (E/LA) Standards in elementary school, prepares students for the Smarter Balanced State Assessments, and establishes the skills necessary for a successful progression of learning to the next grade level of E/LA course work.

The 6th grade E/LA SpringBoard curriculum extends the development of reading, composition, and speaking skills. Sixth grade instructional materials center upon the theme of **Change**. Using Advanced Placement (AP) strategies, students are taught to analyze complex fiction and nonfiction from a variety of genres, including longer literary studies of novels and a Shakespearean play, and includes a selection of novels students can choose for independent reading. 6th graders stretch their composition skills by responding to AP style writing prompts. Students actively participate in text-based class discussions and study vocabulary to expand their writing, reading, and speaking skills. Each unit culminates in two comprehensive Embedded Assessments.

**Note: Students who enroll by choice in an advanced E/LA class do so with the understanding that novels will be more sophisticated and will be read at a higher level of maturity than novels in the general education English/Language Arts course. Alternate reading assignments are not provided for students enrolled in these choice E/LA courses.**

### AAP 6<sup>TH</sup> INTEGRATED SCIENCE

Based on the Next Generation Science Standards (Washington State Student Learning Standards) performance expectations for middle school science. Students will engage in science and engineering practices as they learn about disciplinary core ideas within the realm of cells, properties of matter, organisms, energy and weather & climate. Students will also be learning important cross-cutting concepts that include: patterns, structure and function, systems and system models.

Students will engage in the same content area as 6<sup>th</sup> Grade Integrated Science with enrichment and a deeper level of complexity. Students should have the desire to continue to academically advance science courses.

### AAP 6<sup>TH</sup> SOCIAL STUDIES

6th grade Ancient and Medieval World History is a year-long course covering the history of the world from its beginnings to 1450 CE. During this year at least six major world civilizations will be studied in-depth focusing on deepening students understanding of the Earth and its peoples through the study of history, geography, politics, culture, and economic systems from different regions of the world. Students will analyze the interactions among various cultures, emphasizing their enduring contributions and the link between the contemporary and ancient worlds.

This course addresses the Common Core State Standards for History, prepares students for the Smarter Balanced State Assessments, and establishes social studies skills necessary for a successful progression of learning to the next grade level of Social Studies course work.

AAP classes include readings and Socratic seminars designed to encourage and develop high level dialogue on issues important to Ancient and Medieval World History.

### AAP 6<sup>TH</sup> MATH

This course is for students enrolled in the AAP Program who have completed the Holt Course 1 and Holt Course 2 books.

This course aligns to the Grade 8 Common Core State Standards for Mathematics and prepares students for the Smarter Balanced state math assessments and Algebra 1. The course builds upon the previous year's work of solving two-step linear equations and moves to solving a variety of linear equations. Students will then begin solving systems of linear equations. Students will investigate patterns of association in bivariate data. Other topics that will be covered are linear functions, angle and line relationships in geometry, transformations, Pythagorean theorem, functions, an introduction to the laws of exponents, and working with scientific notation. Students will continue to develop problem solving, reasoning and proof, communication, and mathematical modeling skills aligned to the Standards for Mathematical Practice

## **ELECTIVE COURSES**

**\*\*\*Please do not let elective course fees get in the way of choosing the class you want.  
If your family needs assistance, please speak with your counselor.\*\*\***

### **CHOIR (full year)**

This year-long course provides a variety of singing opportunities for beginning singers. It is an introduction to vocal choral music and a preparatory experience for the Advanced Choir. Vocal techniques and music reading are emphasized, and students are given the opportunity to explore various musical sources and styles. Much emphasis is placed on providing a positive musical experience to students through class activities. The Beginning Chorus has three to four required evening concerts, solo and small group performance opportunities, and a field trip.

### **BAND (full year)**

For students desiring to play a band instrument (woodwind, brass, or percussion). Students will build upon knowledge of musical concepts, vocabulary, skills and techniques as it relates to their specific instrument and their role within the large performing ensemble.

No experience required for beginning students; students with less experience may be offered occasional tutoring.

- School assembly performances
- Participate in the Solo/Ensemble festival
- Three or more evening concerts
- Includes leadership components
- Combined concerts with BHS and other schools
- Annual field trips and fun festival participation

### **ORCHESTRA (full year)**

For students desiring to play a string instrument (violin, viola, cello, or string bass). Students will build upon knowledge of musical concepts, vocabulary, skills and techniques as it relates to their specific instrument and their role within the large performing ensemble.

- No experience is required for beginning students; students with less experience may be offered occasional tutoring
- School assembly performances
- Participate in the Solo/Ensemble festival
- Three or four evening performances
- Includes leadership components
- Combined concerts with BHS and other schools
- Annual field trip

### **6<sup>th</sup> GRADE ELECTIVE WHEEL**

A series of 9-week courses designed to provide students with exposure to a variety of subjects. These may include: Performance Arts, Visual Arts, STEM, Leadership, Fitness-related classes, and other exploratory topics. This course is an opportunity to cultivate undiscovered interests, and create opportunities for students to make informed decisions about elective offerings in 7<sup>th</sup> and 8<sup>th</sup> grade. The makeup of the actual content covered in the Elective Wheel will vary and is dependent on staff expertise and availability.