

## Configuration

- Attendance Notifications
  - Truancy
    - Letter 1: sent at 3 unexcused absences
    - Letter 2 : sent at 6 unexcused absences :
    - Letter 3 : sent at 10 unexcused absences
  - Excessive Excused Absence Letters
    - Letter 1: sent at 10 excused absences
    - Letter 2: sent at 14 excused absences

© 2015 School Innovations & Achievement. All rights reserved. Proprietary information not for copy or distribution.

Attention<sup>2</sup>Attendance™

877.954.4357 • www.sia-us.com

## Increased Parent Communication and Engagement



### Letters Printed and Mailed as of January 28, 2016

- Printed letters every two weeks (8 total letter runs to date)
- **4,024 Parent Communication pieces** (average letter run: 503)
  - 1,866 Initial Truancy Notifications
  - 493 Second Truancy Notifications
  - 44 Final Truancy Notifications (Habitual Truant)
  - 31 Excessive Excused Absence Notifications L1
  - 5 Excessive Excused Absence Notifications L2
  - 1,339 Email Notifications
  - 246 Conference Notifications



### Conferences

- **81 Conferences Conducted**

© 2015 School Innovations & Achievement. All rights reserved. Proprietary information not for copy or distribution.

Attention<sup>2</sup>Attendance™

877.954.4357 • www.sia-us.com

## A2A Definitions and Criteria

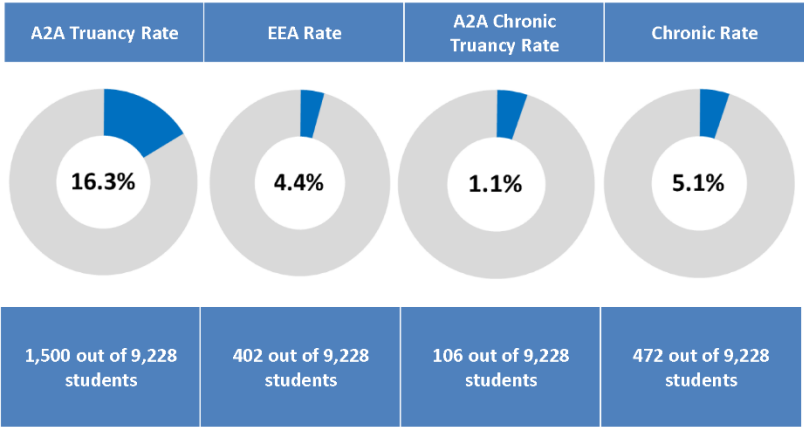
- **A2A Truant** – A student who has accumulated the equivalent of three or more full days of unexcused absences.
- **Excessively Excused** – A student who has accumulated the equivalent of seven or more full days of excused absences.
- **A2A Chronically Truant** – A student who is absent for 10% or more of the school year due to **unexcused** absences.
- **Chronically Absent** – A student who is absent for 10% or more of the school year due to **all** absences.

© 2015 School Innovations & Achievement. All rights reserved. Proprietary information not for copy or distribution.

Attention2Attendance®

877.954.4357 • www.sia-us.com

## 2015-16 Total Absence Rates, YTD



© 2015 School Innovations & Achievement. All rights reserved. Proprietary information not for copy or distribution.

Data as of 1/13/2016

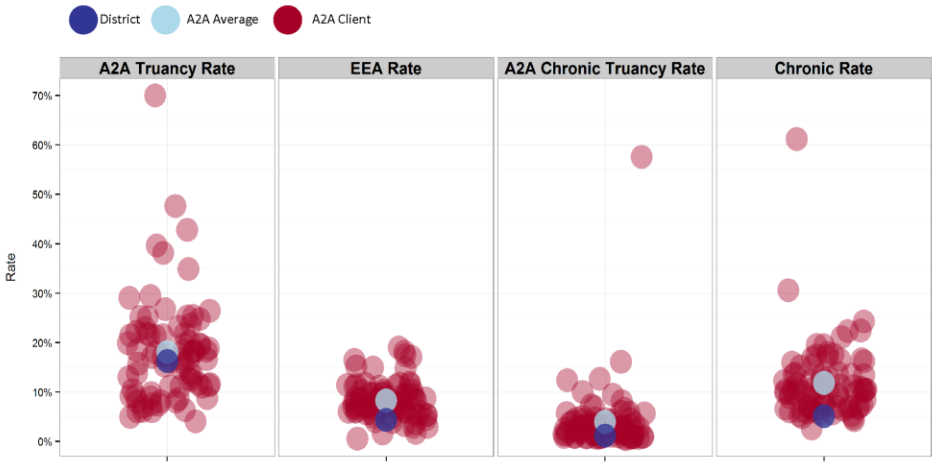
Attention2Attendance®

877.954.4357 • www.sia-us.com

# 2015-16 District Attendance Summary

## 2015-16 District Absence Rates Compared to Other A2A Clients, YTD

the lower, the better

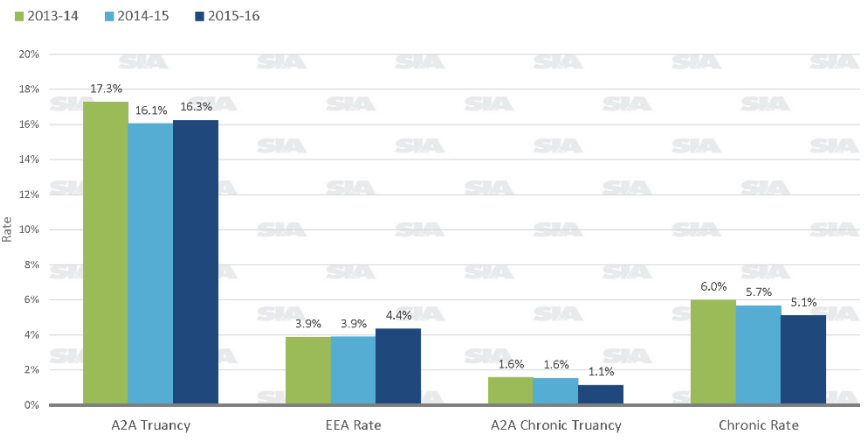


### A2A Definitions and Criteria

- **A2A Truant** – A student who has accumulated the equivalent of three or more full days of unexcused absences.
- **Excessively Excused** – A student who has accumulated the equivalent of seven or more full days of excused absences.
- **A2A Chronically Truant** – A student who is absent for 10% or more of the school year due to **unexcused** absences.
- **Chronically Absent** – A student who is absent for 10% or more of the school year due to **all** absences.

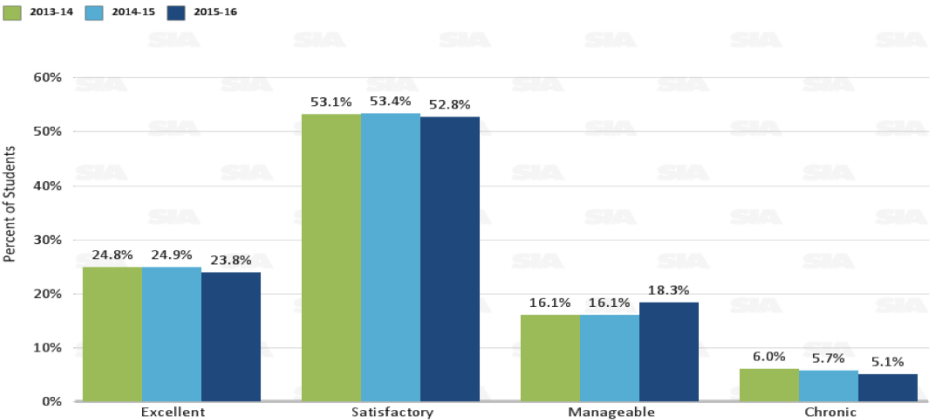
## Total Absence Rates, Year-over-Year, YTD

the lower, the better





# Total Absence Summary, Year-over-Year, YTD



- The goal is to **increase** the number of students in the **Excellent** and **Satisfactory** categories and **decrease** the number of students in the **Manageable** and **Chronic** categories.
- We are **seeing improvement over last year** in the Chronic category.
- There are **things we can do to continue** improving these results so we don't plateau.

©2015 School Innovations & Achievement. All rights reserved. Proprietary information not for copy or distribution.

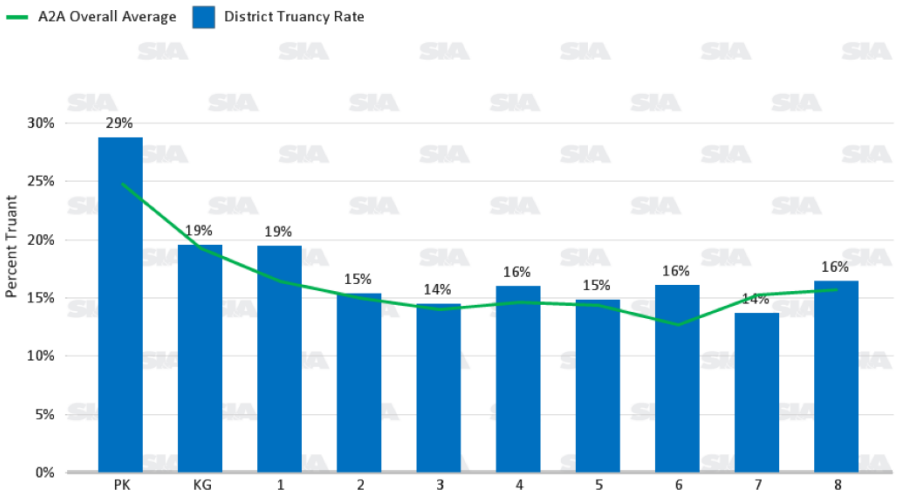
## A2A Definitions and Criteria

- **A2A Truant** – A student who has accumulated the equivalent of three or more full days of unexcused absences.
- **Excessively Excused** – A student who has accumulated the equivalent of seven or more full days of excused absences.
- **A2A Chronically Truant** – A student who is absent for 10% or more of the school year due to **unexcused** absences.
- **Chronically Absent** – A student who is absent for 10% or more of the school year due to **all** absences.

©2015 School Innovations & Achievement. All rights reserved. Proprietary information not for copy or distribution.

## 2015-16 District A2A Truancy Rates vs. A2A Average, YTD

the lower, the better

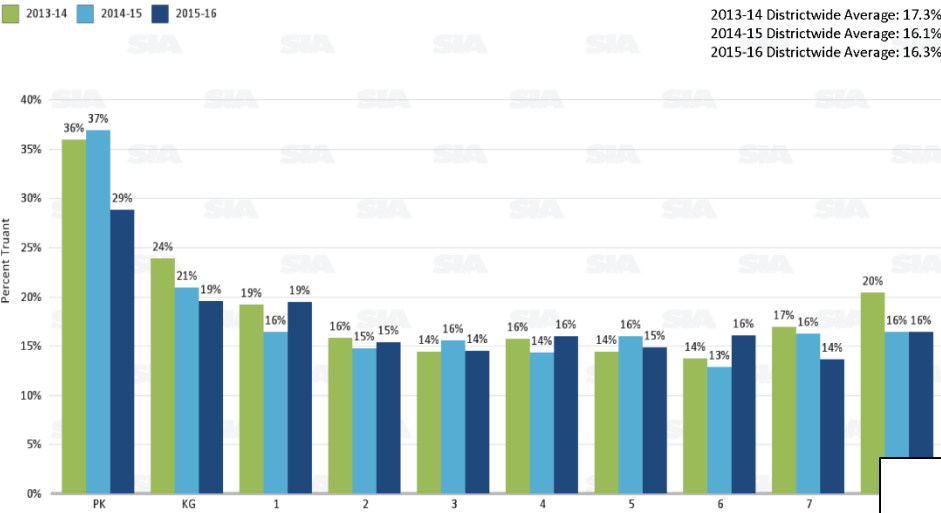


A2A Truant - A student who has accumulated the equivalent of three or more full days of unexcused absences.

Data as of 1/13/2016

# Truant By Grade: Year-over-Year, YTD

the lower, the better

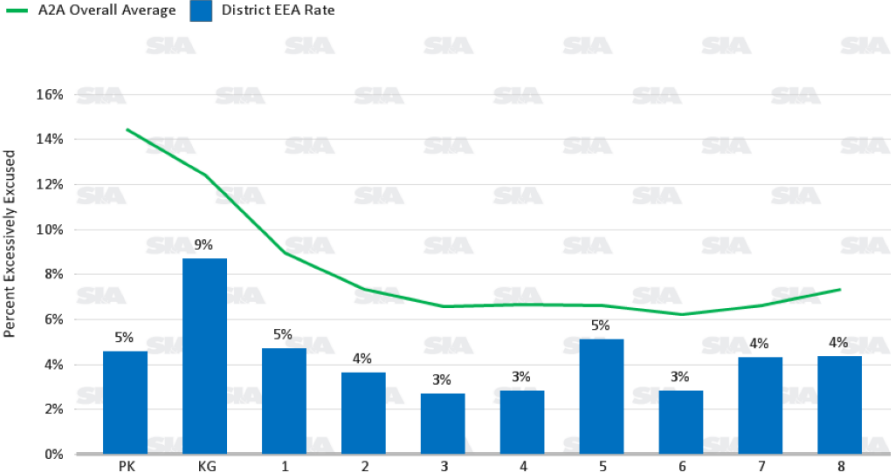


A2A Truant - A student who has accumulated the equivalent of three or more full days of unexcused absences.  
© 2016 School Innovations & Achievement. All rights reserved. Proprietary information not for copy or distribution.

Data as of

# 2015-16 District EEA Rate vs. A2A Average, YTD

the lower, the better



Excessively Excused - A student who has accumulated the equivalent of seven or more full day of excused absences.  
© 2016 School Innovations & Achievement. All rights reserved. Proprietary information not for copy or distribution.

Data as of 1/13/2016

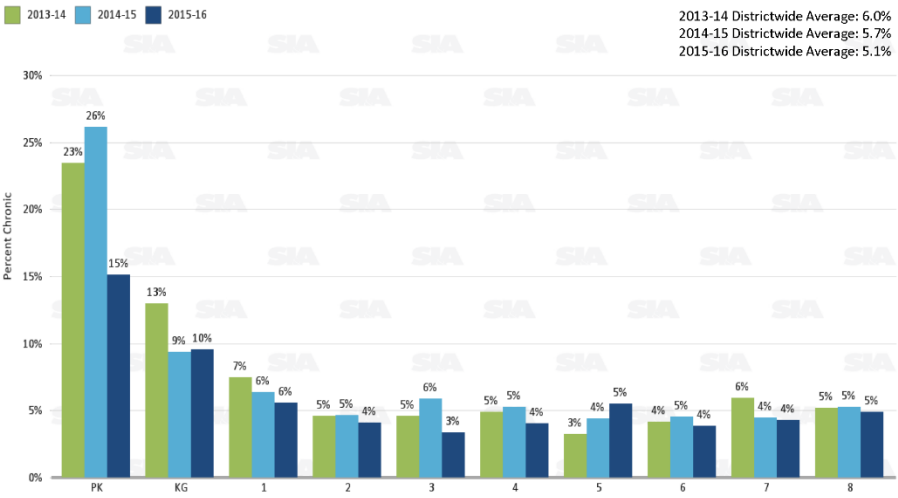
## A2A Definitions and Criteria

- A2A Truant** – A student who has accumulated the equivalent of three or more full days of unexcused absences.
- Excessively Excused** – A student who has accumulated the equivalent of seven or more full days of excused absences.
- A2A Chronically Truant** – A student who is absent for 10% or more of the school year due to **unexcused** absences.
- Chronically Absent** – A student who is absent for 10% or more of the school year due to **all** absences.

© 2016 School Innovations & Achievement. All rights reserved. Proprietary information not for copy or distribution.

# Chronic By Grade: Year-over-Year, YTD

the lower, the better



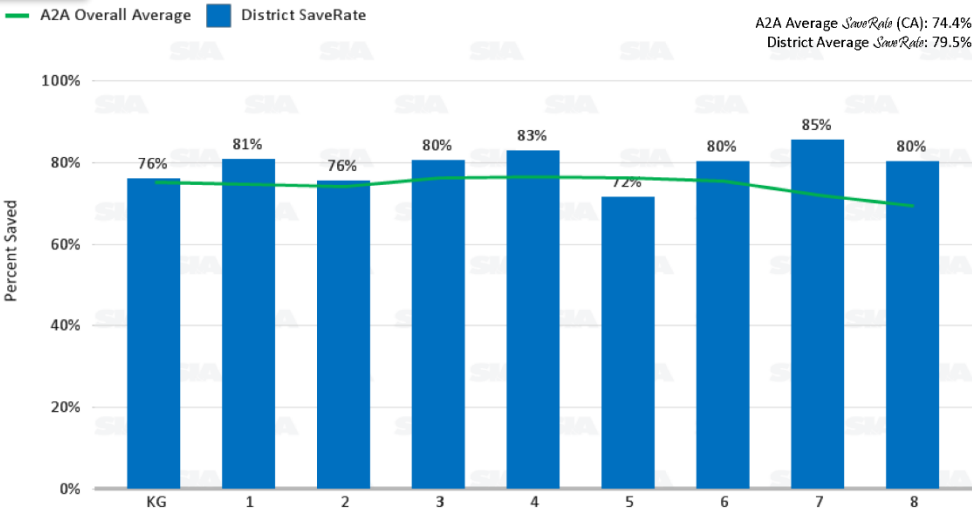
2013-14 Districtwide Average: 6.0%  
2014-15 Districtwide Average: 5.7%  
2015-16 Districtwide Average: 5.1%

Chronically Absent - A student who is absent for 10% or more of the school year due to **all** absences.  
© 2015 School Innovations & Achievement. All rights reserved. Proprietary information not for copy or distribution.

Data as of 1/13/2016

# 2015-16 Overall SaveRate vs. A2A Average, YTD

the higher, the better



A2A Average SaveRate (CA): 74.4%  
District Average SaveRate: 79.5%

© 2015 School Innovations & Achievement. All rights reserved. Proprietary information not for copy or distribution.

Data as of 1/13/2016

## A2A Definitions and Criteria

- A2A Truant** – A student who has accumulated the equivalent of three or more full days of unexcused absences.
- Excessively Excused** – A student who has accumulated the equivalent of seven or more full days of excused absences.
- A2A Chronically Truant** – A student who is absent for 10% or more of the school year due to **unexcused** absences.
- Chronically Absent** – A student who is absent for 10% or more of the school year due to **all** absences.

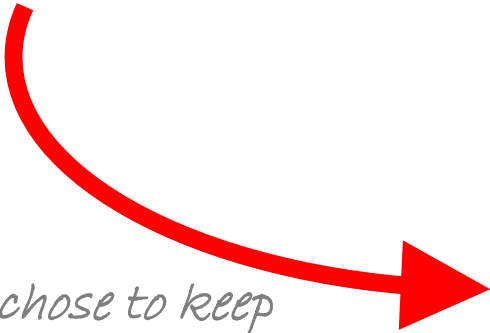
© 2015 School Innovations & Achievement. All rights reserved. Proprietary information not for copy or distribution.

# Year-To-Date Absences

Excused: 1,283

Unexcused: 4,010

*Reasons parents chose to keep  
children home (August 2015)*



8/6/2015 out of state in Texas  
 8/6/2015 mother was unaware of start date.  
 8/6/2015 still on vacation per guardian  
 8/7/2015 family vacation/reunion  
 8/6/2015 Parents were both out of town and no one could bring her.  
 8/10/2015 Obligations Out of Town  
 8/7/2015 out of town per mother  
 8/7/2015 Went to Mexico  
 8/6/2015 Did not know school started and were out-of-town.  
 8/6/2015 Out of town  
 8/6/2015 Out of country  
 8/11/2015 Family Issues  
 8/12/2015 personal problems per parent note  
 8/14/2015 out of town appt per parent note  
 8/6/2015 out of town per guardian  
 8/6/2015 out of town per guardian  
 8/12/2015 Family engagement  
 8/13/2015 Synchronized swimming competition  
 8/13/2015 Unable to take to school as parents went to hospital with sister  
 8/12/2015 family engagement  
 8/14/2015 Colombian Consulate  
 8/14/2015 out of town  
 8/17/2015 Out of Town Late Slept In  
 8/14/2015 Family trip  
 8/17/2015 Important Personal Business  
 8/12/2015 personal problem per parent note  
 8/24/2015 out of town family reunion per parent to teacher  
 8/24/2015 out of town family reunion per parent to teacher  
 8/17/2015 Family Vacation  
 8/17/2015 family vacation  
 8/21/2015 family went out of town  
 8/21/2015 Family matter.  
 8/27/2015 Family trip.  
 8/26/2015 personal day per parent  
 8/21/2015 private family matter  
 8/28/2015 Family Event  
 8/31/2015 Plans Made 4 Months Ago  
 8/28/2015 out of town/family reunion

# Excellent Attendance Letters

- In 2014-15 there were 1,730 students or 19% of your student population who ended the year with excellent attendance (missed less than 1% of the year)
- As of January 13<sup>th</sup> of this school year, there are 2,198 (23.8%) students who currently have missed less than 1%
- Let's focus on these students and encourage them to continue their excellent attendance. By acknowledging these students we are reinforcing attendance goals and encouraging others to goal set - end the year with excellent attendance
- These positive, encouraging letters are designed to acknowledge an often unrecognized but very important group of students
- Recognition letters celebrate not only a student's attendance success, but also the parent/guardian efforts
- Recognition is an important communication tool