

IDEA Academy @Cottonwood UNIFORM POLICY

Tops – including shirts, undershirts, sweaters, and sweatshirts

1. COLOR and LOGOS:

- a. All tops (shirts, undershirts, sweaters, and sweatshirts) must be a solid color* of navy blue, burgundy (not red), gray, black or white.
- b. *Solid color means that the material does not have any patterns, pictures, or designs.
- c. Any shirt may include an embroidered school logo or school name. The school logo or name is not required.

2. SHIRT STYLES:

- a. All shirts must have a visible collar.
- b. Shirts may be short sleeve and long sleeve polo style. Polo style shirts have a collar and 2-3 buttons below the collar.
- c. Shirts may be short sleeve and long sleeve oxford style. Oxford style shirts have a collar and buttons from the hem to the collar. Oxford style shirts must be worn buttoned. Oxford shirts can be plain front or have a single pocket in the same color as the rest of the shirt.
- d. Shirts do not need to be worn tucked in. However, they cannot be oversized, overly long or overly baggy.



Short sleeve polo



long sleeve polo



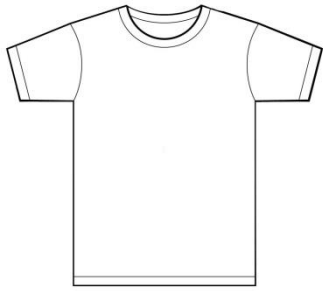
Short sleeve oxford



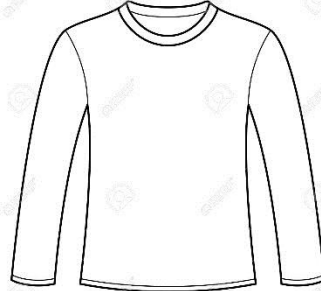
long sleeve oxford

3. UNDERSHIRTS:

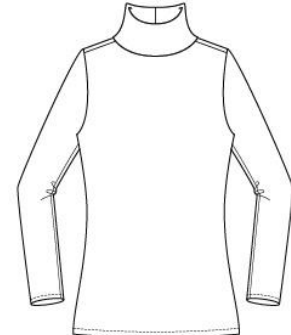
- a. Crew necks that are short sleeve or long sleeve and in a solid color of navy blue, burgundy (not red), gray, black, or white may be worn underneath polos or oxford shirts.
- b. Turtlenecks that are long sleeve and in a solid color of navy blue, burgundy (not red), gray, black, or white may be worn underneath polos or oxford shirts.



Short sleeve crew neck



long sleeve crew neck



long sleeve turtle neck

4. SWEATERS

- a. Sweaters that are long sleeve and in a solid color of navy blue, burgundy (not red), gray, black, or white may be worn over collared polos or oxford shirts. Collars must be visible while the sweater is worn.
- b. Sweater styles may be pull-over, zip-up, button up, or snap up.

5. SWEATSHIRTS

- a. Sweatshirts that are long sleeve and in a solid color of navy blue, burgundy (not red), gray, black, or white may be worn over collared polos or oxford shirts. Collars must be visible while the sweater is worn
- b. Sweatshirt styles may be pull-over or zip-up.
- c. Sweatshirt styles may include hoods and single or double front pockets.
- d. All students may wear pull-over or zip-up sweatshirts that include the school spirit wear logo.
- e. All students may wear pull-over or zip-up sweatshirts that include a college logo. College sweatshirts may be in any color.

6. COATS AND JACKETS

- a. Denim/jean jackets are not allowed.
- b. Coats and jackets may be of any color and pattern.

Bottoms – including pants, shorts, and skirts

7. COLORS

- a. All bottoms (pants, shorts, skirts, skorts, capris, and jumpers) must be a solid color* of navy blue, gray, black or tan.
- b. *Solid color means that the material does not have any patterns, pictures, or designs.
- c. All bottoms must be free of tulle, lace, sequins, patches, contrasting stitching, logos, and other decorations.

8. PANT STYLES

- a. All pants must be of uniform style material (such as heavy cotton, polyester blend or Dockers style slacks) and not jeans.
- b. Capri style pants are permitted for students at all grades.
- c. Pants made of stretch knits (such as leggings) are permitted for kindergarten and 1st grade students.
- d. Pants made of stretch knits (such as leggings) are not permitted for 2nd-6th grade students.
- e. Pants must not be ripped, frayed, oversized, saggy, or baggy in style.
- f. Jean pants may only be worn on Spirit Day Fridays or free dress days.

9. SHORTS, SKIRTS, SKORTS, AND JUMPERS

- a. All shorts, skirts, skorts, and jumpers must be of uniform style material (such as heavy cotton, polyester blend or Dockers style).
- b. All shorts, skirts, skorts, and jumpers must come to mid-thigh length.
- c. Shorts, skirts, skorts, and jumpers must not be ripped, frayed, oversized, saggy or baggy in style.
- d. Jean shorts, skirts, and skorts may only be worn on Spirit Day Fridays or free dress days.

10. LEGGINGS AND TIGHTS UNDER BOTTOMS

- a. Leggings or tights in solid colors of navy blue, burgundy (not red), black, white, gray, or tan may be worn under skirts or jumpers for all students at all grades.

11. BELTS are not required.

Headgear – including caps, hats, beanies, hair accessories, and hair color

12. COLORS AND LOGOS

- a. All caps, hats, and beanies must be in a solid color of navy blue, burgundy, black, white, or gray OR
- b. Caps, hats, and beanies with our school logo or a college logo are permitted.
- c. Caps, hats, and beanies with tulle, lace, sequins, faux-hawks, and other decorations are not allowed.
- d. Only natural hair colors are allowed. Unnatural colors such as pink, purple, green, blue, etc. are not allowed whether permanent, temporary, or removable in nature.

13. CAPS, HATS, BEANIES, AND HAIR ACCESSORIES

- a. All caps must be worn with the bill forward.
- b. Caps, hats, and beanies may be worn outdoors only. They must be removed when indoors.
- c. Hair accessories must be in solid or patterned colors of navy blue, maroon (not red), gray, black, white, tan, silver, or gold.

Footwear – including socks and shoes

14. SOCKS

- a. Socks that are visible must be in solid colors of navy blue, burgundy, gray, black, white, or tan.
- b. Socks must be worn in matching pairs.

15. SHOES

- a. Shoe styles must meet existing school board policy.
- b. Shoes must be flat and include a heel strap.

Special Dress Days

16. PICTURE DAYS

- a. Students must be in school uniforms for fall picture day.
- b. Students may wear free dress for spring picture day.

17. SPIRIT DAYS

- a. Students may wear jeans on Fridays with spirit wear shirts.
- b. College shirts may be worn on Thursdays with regular uniform bottoms.
- c. Other special school spirit theme days or free dress days may be announced during the year.