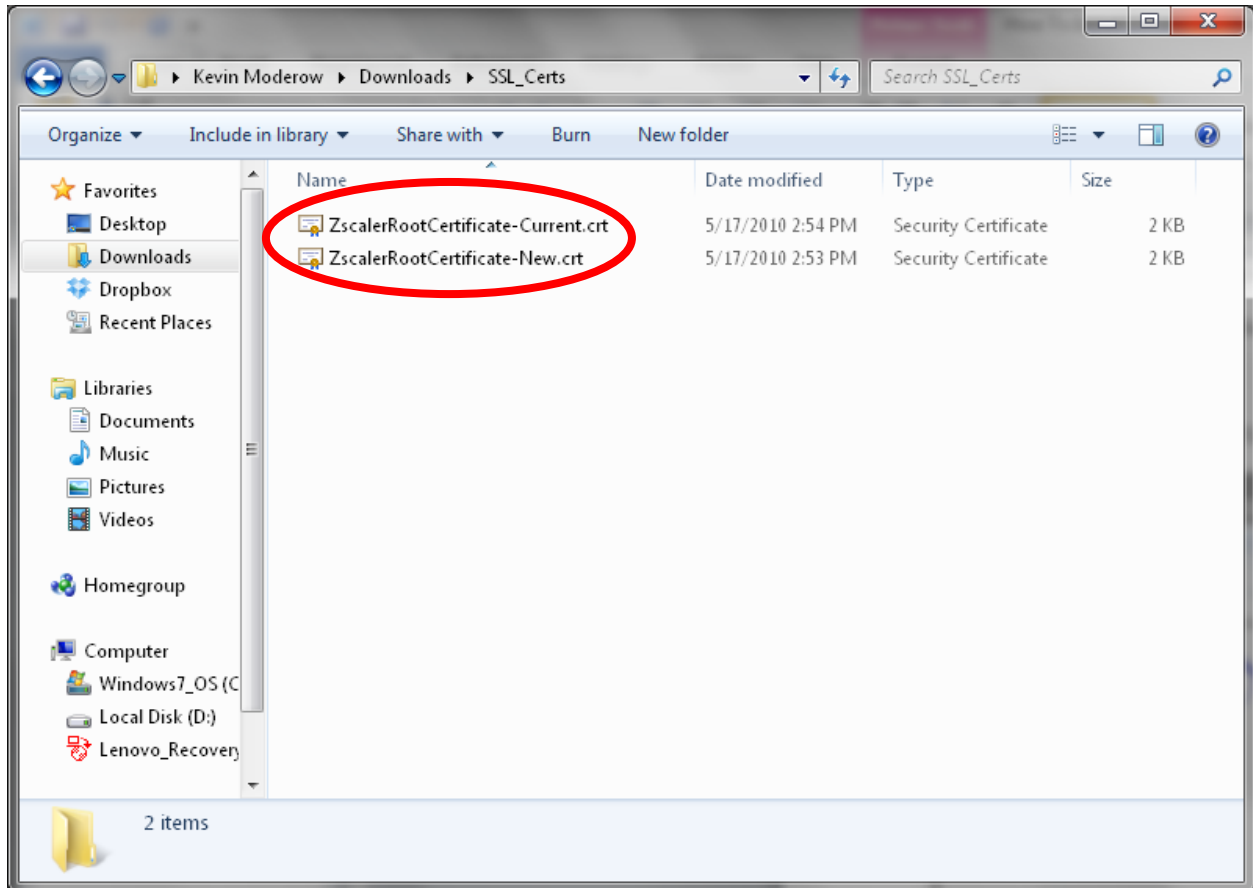


How To Install Zscaler SSL Trusted Root Certificates

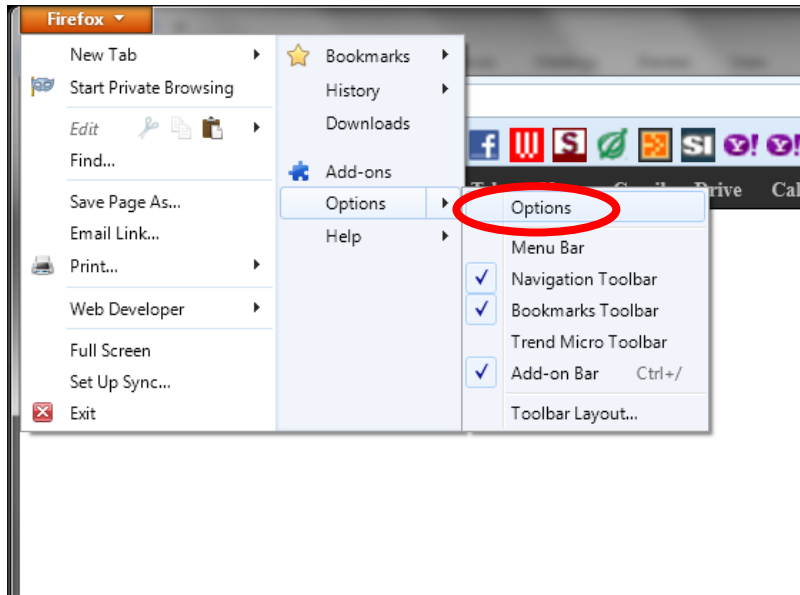
Browsers covered: Firefox

These steps will not affect or fix Internet Explorer or Chrome.

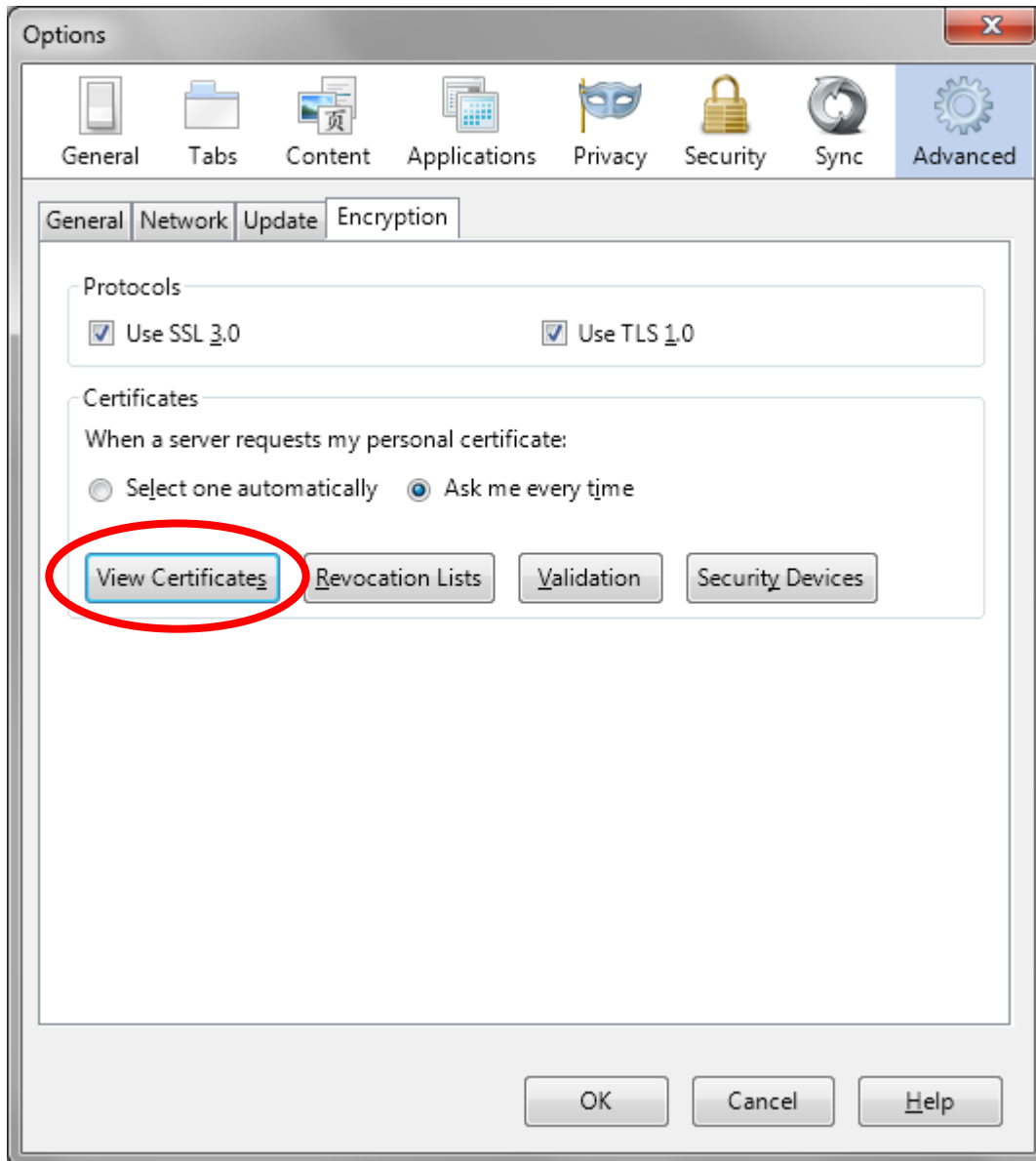
1. Locate the two Zscaler certs: "Current" and "New"



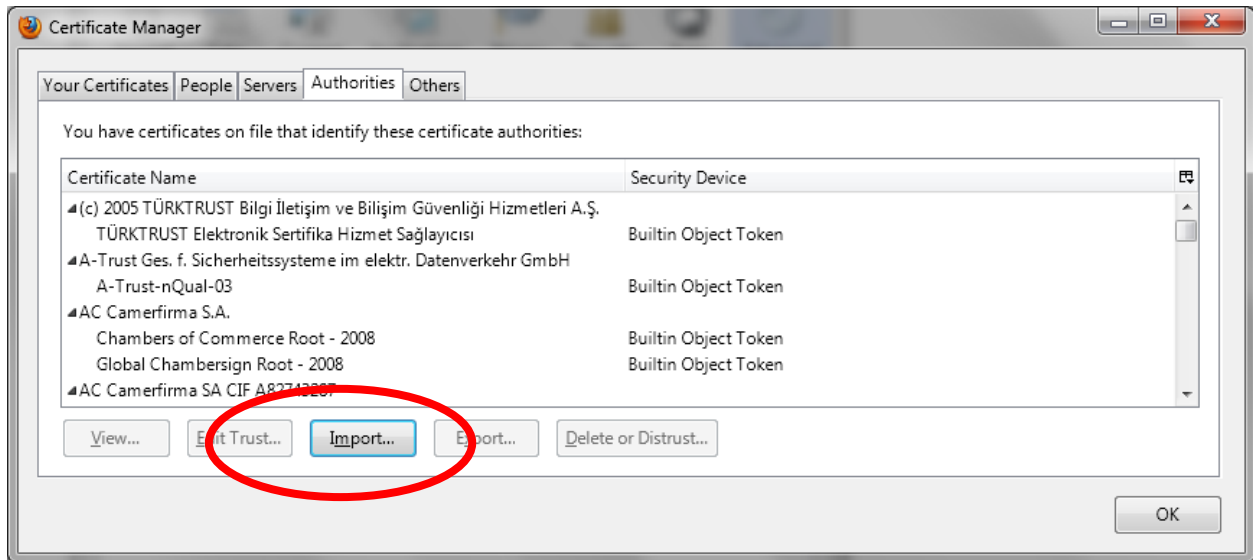
2. Open the Firefox Options panel



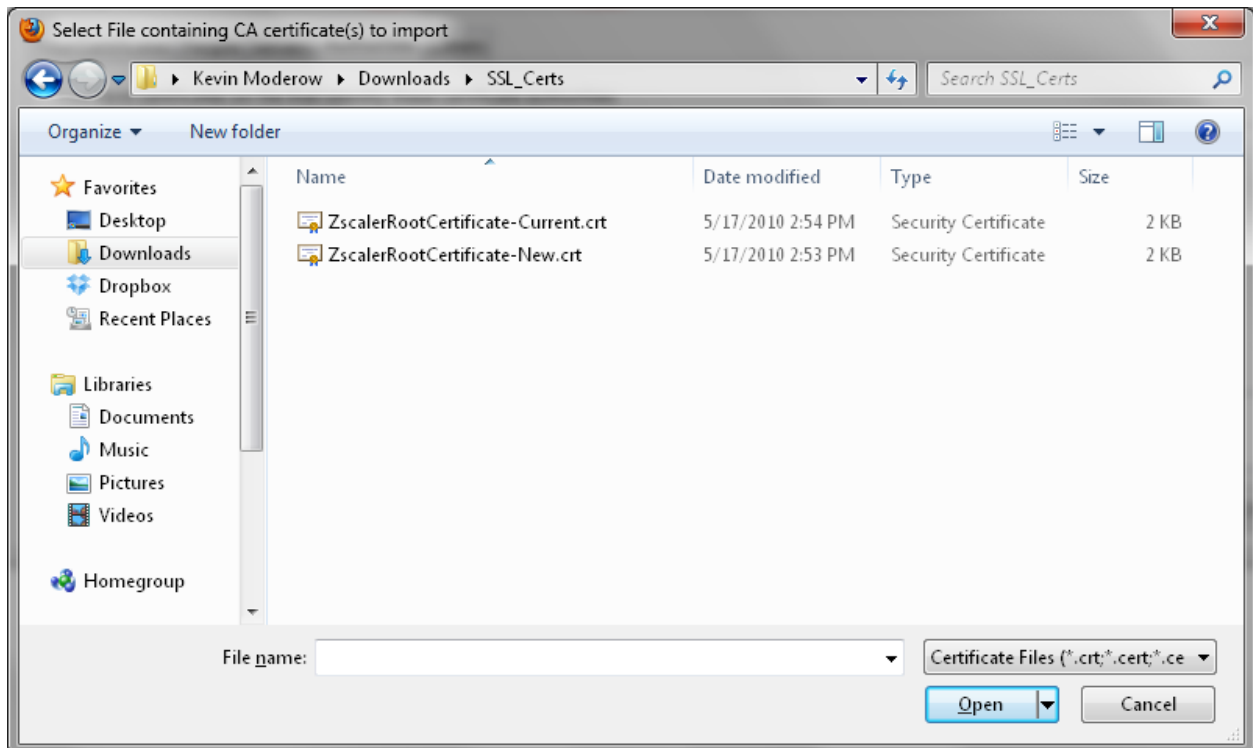
3. Click Advanced and Encryption and then click “View Certificates



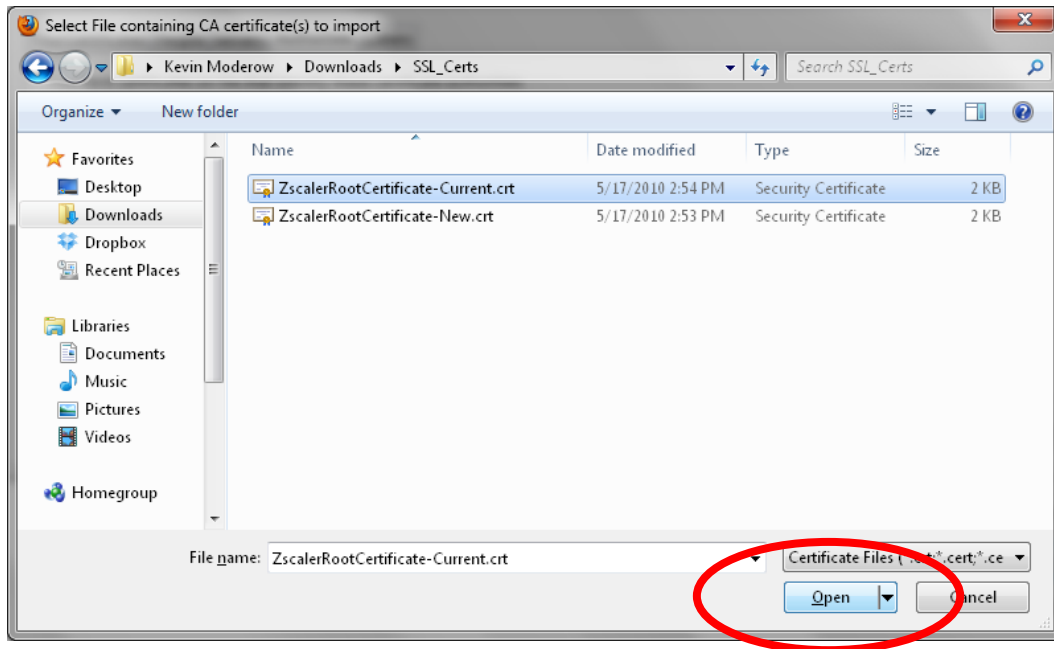
4. Click Import



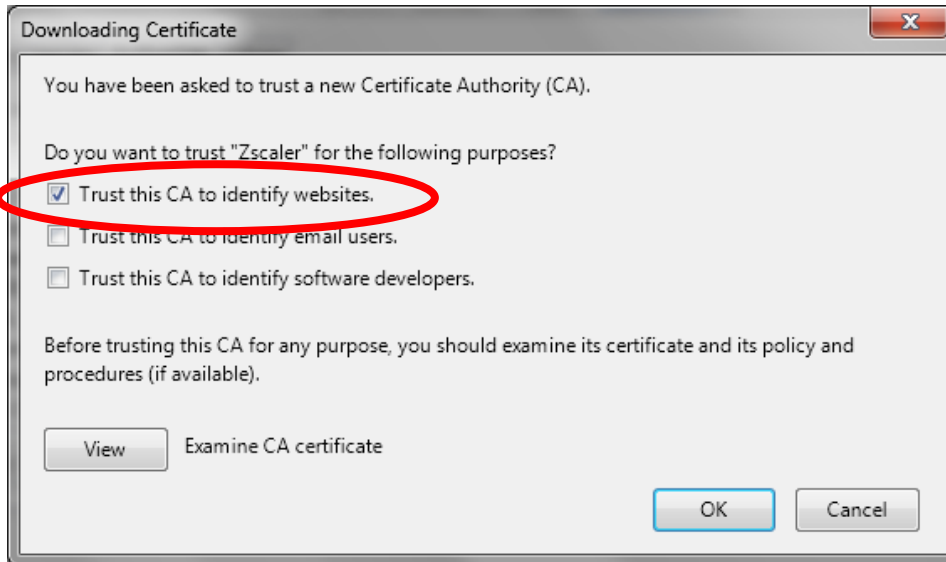
5. Navigate to the two certificates



6. Choose the "Current" certificate and click Open



7. Check the box marked "Trust this CA to identify websites and click OK



8. Repeat steps 4 through 7 for the "New" certificate as well.

9. Close all dialogue boxes

Kevin Moderow

kmoderow@mcnc.org