

DOOR NUMBER PREFIXES:

H – Horizons
 HG – Hocker Grove
 IH – Indian Hills

HARDWARE SET 01

DOOR NUMBER:

HG-103	HG-104	HG-105	HG-106	HG-107	HG-108
HG-109	HG-110A	HG-110B	HG-111	HG-114	HG-115
HG-116	HG-119	HG-120	HG-121	HG-123	HG-124
HG-136A	HG-203	HG-204	HG-205	HG-206	HG-207
HG-208	HG-209	HG-21	HG-210	HG-211	HG-214
HG-215	HG-216	HG-218	HG-219	HG-22	HG-220
HG-221	HG-23	HG-24	HG-25	HG-26	HG-27
HG-32	HG-LIB1	HG-NURSE	HG-WRKRM	IH-10	IH-100A
IH-101	IH-102	IH-103	IH-104	IH-113B	IH-117
IH-124	IH-125	IH-126A	IH-126B	IH-127	IH-12A
IH-12B	IH-134	IH-135	IH-136	IH-137	IH-138
IH-139	IH-13A	IH-13B	IH-140	IH-141	IH-142
IH-19	IH-2	IH-20	IH-21	IH-22	IH-23
IH-233	IH-234	IH-235	IH-236	IH-237	IH-238
IH-239	IH-23A	IH-24	IH-240	IH-241	IH-242
IH-243	IH-25	IH-26	IH-26A	IH-3	IH-4
IH-7	IH-9				

EACH TO HAVE:

QTY	DESCRIPTION	CATALOG NUMBER	FINISH	MFR
1 EA	CORRIDOR LOCK	ND73LD RHO	626	SCH
1 EA	CYLINDER	REUSE EXISTING (PROVIDE APPROPRIATE CAM/TAILPIECE)		SCH
EA	NOTE	REMAINDER OF HARDWARE EXISTING		

HARDWARE SET 02

DOOR NUMBER:

H-128A H-128B H-128C

EACH TO HAVE:

QTY	DESCRIPTION	CATALOG NUMBER	FINISH	MFR
1 EA	INSIDE ESCUTCHEON	09-633	626	SCH
EA	NOTE	REMAINDER OF HARDWARE EXISTING		

NOTE: REPLACE INSIDE ESCUTCHEON TO CONVERT CLASSROOM FUNCTION TO OFFICE FUNCTION. PROVIDE ANY ADDITIONAL HARDWARE AS REQUIRED.

HARDWARE SET 03

DOOR NUMBER:

HG-GYM1	HG-GYM2	HG-LIB3	IH-110A	IH-110A.1	IH-111
IH-112A	IH-112B	IH-112C	IH-112D	IH-113	IH-116
IH-119A	IH-119B	IH-6	IH-8		

EACH TO HAVE:

QTY		DESCRIPTION	CATALOG NUMBER	FINISH	MFR
2	EA	FIRE EXIT HARDWARE	99-L-F-2SI-996-06 ON RATED DOORS / LD-99-L-2SI-996-06 ON NON RATED DOORS	626	VON
2	EA	RIM HOUSING	20-079	626	SCH
2	EA	RIM CYL THUMBTURN	XB11-979	626	SCH
2	EA	PRIMUS CORE	REUSE EXISTING	626	SCH
	EA	NOTE	REMAINDER OF HARDWARE EXISTING		

HARDWARE SET 03A

DOOR NUMBER:

<u>HG-28</u>	<u>HG-30</u>	<u>HG-31</u>	<u>HG-34</u>	<u>IH-114</u>
--------------	--------------	--------------	--------------	---------------

EACH TO HAVE:

QTY		DESCRIPTION	CATALOG NUMBER	FINISH	MFR
1	EA	FIRE EXIT HARDWARE	99-L-F-2SI-996-06 ON RATED DOORS / LD-99-L-2SI-996-06 ON NON RATED DOORS	626	VON
1	EA	RIM HOUSING	20-079	626	SCH
1	EA	RIM CYL THUMBTURN	XB11-979	626	SCH
1	EA	PRIMUS CORE	REUSE EXISTING	626	SCH
1	EA	ESCUTCHEON	4901 (IF REQUIRED)	626	PRE
	EA	NOTE	REMAINDER OF HARDWARE EXISTING		

NOTE: INSTALL NEW DEVICE ON LARGE LEAF. ON SMALL LEAF REMOVE LEVER (IF EXISTING) AND INSTALL ESCUTCHEON TO MAKE DOOR EXIT ONLY.

HARDWARE SET 04

DOOR NUMBER:

HG-222A HG-222B HG-LIB2

EACH TO HAVE:

QTY		DESCRIPTION	CATALOG NUMBER	FINISH	MFR
1	EA	FIRE EXIT HARDWARE	99-L-F-2SI-996-06 ON RATED DOORS / LD-99-L-2SI-996-06 ON NON RATED DOORS	626	VON
1	EA	RIM HOUSING	20-079	626	SCH
1	EA	RIM CYL THUMBTURN	XB11-979	626	SCH
1	EA	PRIMUS CORE	REUSE EXISTING	626	SCH
	EA	NOTE	REMAINDER OF HARDWARE EXISTING		

HARDWARE SET 05

DOOR NUMBER:

HG-BOYSLKR HG-GIRLLKR

EACH TO HAVE:

QTY		DESCRIPTION	CATALOG NUMBER	FINISH	MFR
1	EA	FIRE EXIT HARDWARE	99-L-F-2SI-996-06 ON RATED DOORS / LD-99-L-2SI-996-06 ON NON RATED DOORS	626	VON
2	EA	RIM HOUSING	20-079	626	SCH
1	EA	PRIMUS CORE	20-740	626	SCH
1	EA	PRIMUS CORE	REUSE EXISTING	626	SCH
	EA	NOTE	REMAINDER OF HARDWARE EXISTING		

HARDWARE SET 06

DOOR NUMBER:

HG-STAGE

EACH TO HAVE:

QTY		DESCRIPTION	CATALOG NUMBER	FINISH	MFR
1	EA	FIRE EXIT HARDWARE	9975-L-F-2-06	626	VON
1	EA	RIM HOUSING	20-079	626	SCH
1	EA	RIM CYL THUMBTURN	XB11-979	626	SCH
1	EA	PRIMUS CORE	REUSE EXISTING	626	SCH
	EA	NOTE	REMAINDER OF HARDWARE EXISTING		

HARDWARE SET 07

DOOR NUMBER:

HG-MPR1 HG-MPR2 IH-5

EACH TO HAVE:

QTY		DESCRIPTION	CATALOG NUMBER	FINISH	MFR
6	EA	HW HINGE	5BB1HW 4.5 X 4.5	652	IVE
1	EA	REMOVABLE MULLION	F90KR	689	DET
2	EA	FIRE EXIT HARDWARE	99-L-F-2SI-996-06	626	VON
3	EA	RIM HOUSING	20-079	626	SCH
23	EA	RIM CYL THUMBTURN	XB11-979	626	SCH
3	EA	PRIMUS CORE	REUSE EXISTING	626	SCH
2	EA	SURFACE CLOSER	4111 EDA	689	LCN
2	EA	KICK PLATE	8400 10" X 2" LDW B-CS	630	IVE
1	EA	GASKETING	488S-BK	S-BK	ZER
1	EA	MULLION SEAL	8780N	N	ZER

NOTE: REMOVE EXISTING DOORS. PROVIDE NEW GRAINTECH DOORS SIMILAR TO APPEARANCE AND STYLE OF EXISTING DOORS. STAIN TO MATCH EXISTING WOOD DOORS IN SCHOOL. FIELD VERIFY SIZE.

HARDWARE SET 08

DOOR NUMBER:

HG-NEWGYM1 HG-NEWGYM2

EACH TO HAVE:

QTY		DESCRIPTION	CATALOG NUMBER	FINISH	MFR
6	EA	HW HINGE	5BB1HW 4.5 X 4.5	652	IVE
1	EA	REMOVABLE MULLION	F90KR	689	DET
2	EA	FIRE EXIT HARDWARE	99-L-F-2SI-996-06	626	VON
3	EA	RIM HOUSING	20-079	626	SCH
23	EA	RIM CYL THUMBTURN	XB11-979	626	SCH
3	EA	PRIMUS CORE	REUSE EXISTING	626	SCH
1	EA	SURFACE CLOSER	4111 CUSH	689	LCN
1	EA	SURFACE CLOSER	4111 EDA	689	LCN
2	EA	KICK PLATE	8400 10" X 2" LDW B-CS	630	IVE
1	EA	GASKETING	488S-BK	S-BK	ZER
1	EA	MULLION SEAL	8780N	N	ZER

NOTE: REMOVE EXISTING DOORS. PROVIDE NEW GRAINTECH DOORS SIMILAR TO APPEARANCE AND STYLE OF EXISTING DOORS. STAIN TO MATCH EXISTING WOOD DOORS IN SCHOOL. FIELD VERIFY SIZE.

HARDWARE SET 09

DOOR NUMBER:

IH-143

EACH TO HAVE:

QTY		DESCRIPTION	CATALOG NUMBER	FINISH	MFR
1	EA	DEADBOLT COVER	38-034 X 12-626 X 61-506 X B600-018	626	SCH
1	EA	SGL CYL DEADBOLT	B660J	626	SCH
1	EA	FIRE EXIT HARDWARE	99-L-F-2SI-996-06	626	VON
1	EA	RIM HOUSING	20-079	626	SCH
1	EA	RIM CYL THUMBTURN	XB11-979	626	SCH
1	EA	PRIMUS CORE	20-740	626	SCH
2	EA	PRIMUS CORE	REUSE EXISTING	626	SCH
	EA	NOTE	REMAINDER OF HARDWARE EXISTING		

NOTE: REMOVE DEADBOLT AND PUSH/PULL TRIM FROM LEAF EXITING LIBRARY, REPLACE WITH DEADBOLT COVER AND PANIC DEVICE SPECIFIED. REPAIR DOOR/PROVIDE COVER PLATES IF REQUIRED. ON LEAF ENTERING LIBRARY REPLACE CURRENT DEADBOLT WITH NEW MODEL SPECIFIED.

HARDWARE SET 10

DOOR NUMBER:

STOCK

EACH TO HAVE:

QTY		DESCRIPTION	CATALOG NUMBER	FINISH	MFR
4	EA	CORRIDOR LOCK	ND73LD RHO	626	SCH
10	EA	RIM HOUSING	20-079	626	SCH
			(FOR STOCK AND USE WHEN REPLACING SARGENT PANICS)		
10	EA	PRIMUS CORE	20-740	626	SCH
			(O-BITTED)		

Door/Hardware Index

Door #	HWSet #
H-128A	02
H-128B	02
H-128C	02
HG-103	01
HG-104	01
HG-105	01
HG-106	01
HG-107	01
HG-108	01
HG-109	01
HG-110A	01
HG-110B	01
HG-111	01
HG-114	01
HG-115	01
HG-116	01
HG-119	01
HG-120	01
HG-121	01
HG-123	01
HG-124	01
HG-136A	01
HG-203	01
HG-204	01
HG-205	01
HG-206	01
HG-207	01
HG-208	01
HG-209	01
HG-21	01
HG-210	01
HG-211	01
HG-214	01
HG-215	01
HG-216	01
HG-218	01
HG-219	01
HG-22	01
HG-220	01
HG-221	01
HG-222A	04
HG-222B	04
HG-23	01

Door #	HWSet #
HG-24	01
HG-25	01
HG-26	01
HG-27	01
HG-28	0303A
HG-30	0303A
HG-31	0303A
HG-32	01
HG-34	0303A
HG-BOYSLKR	05
HG-GIRLLKR	05
HG-GYM1	03
HG-GYM2	03
HG-LIB1	01
HG-LIB2	04
HG-LIB3	03
HG-MPR1	07
HG-MPR2	07
HG-NEWGYM1	08
HG-NEWGYM2	08
HG-NURSE	01
HG-STAGE	06
HG-WRKRM	01
IH-10	01
IH-100A	01
IH-101	01
IH-102	01
IH-103	01
IH-104	01
IH-110A	03
IH-440B110A.1	03
IH-111	03
IH-112A	03
IH-112B	03
IH-112C	03
IH-112D	03
IH-113	03

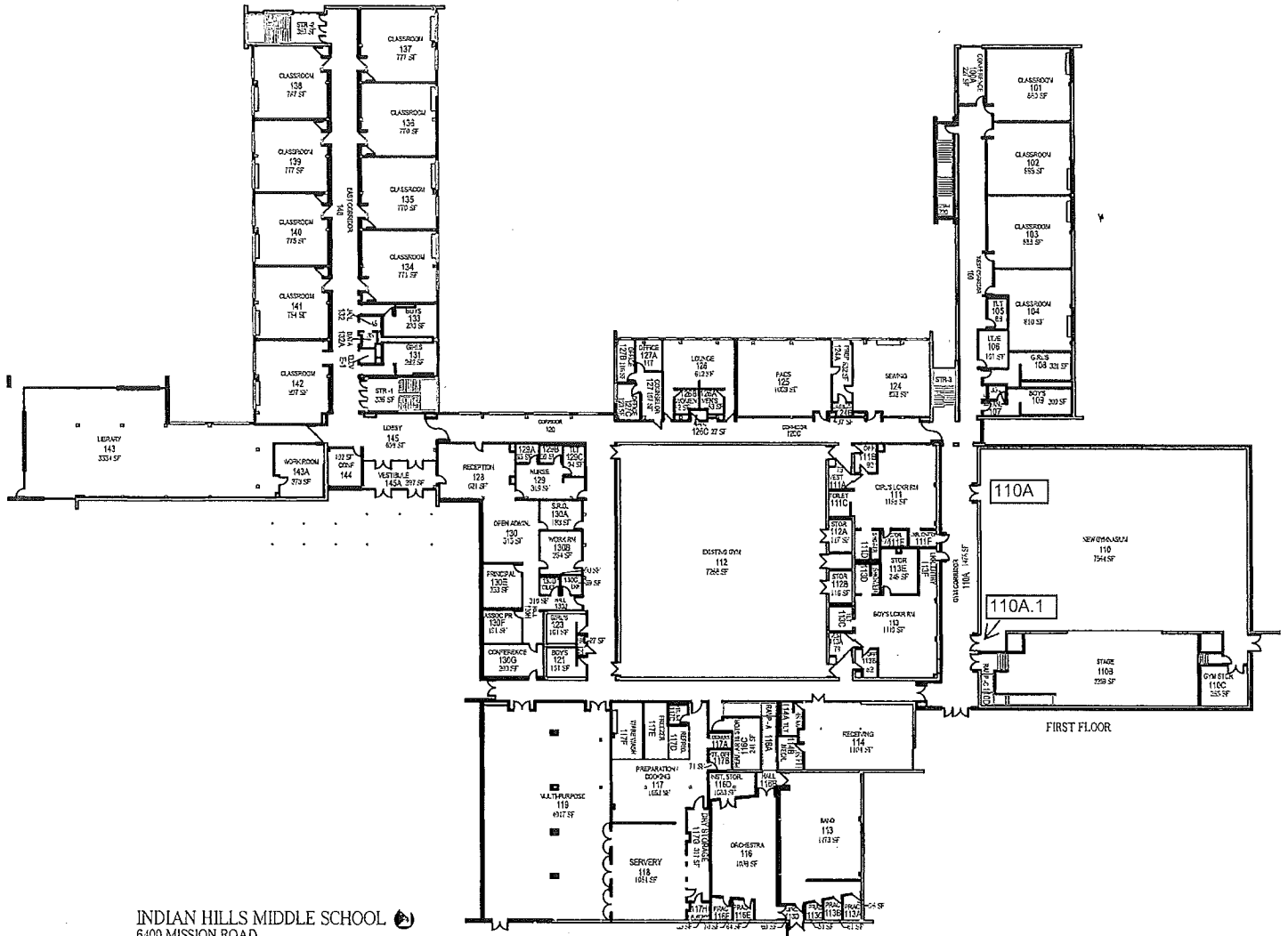
Door #	HWSet #
IH-113B	01
IH-114	0303A
IH-116	03
IH-117	01
IH-119A	03
IH-119B	03
IH-124	01
IH-125	01
IH-126A	01
IH-126B	01
IH-127	01
IH-12A	01
IH-12B	01
IH-134	01
IH-135	01
IH-136	01
IH-137	01
IH-138	01
IH-139	01
IH-13A	01
IH-13B	01
IH-140	01
IH-141	01
IH-142	01
IH-143	09
IH-19	01
IH-2	01
IH-20	01
IH-21	01
IH-22	01
IH-23	01
IH-233	01
IH-234	01
IH-235	01
IH-236	01
IH-237	01
IH-238	01
IH-239	01
IH-23A	01
IH-24	01
IH-240	01
IH-241	01
IH-242	01

Door #	HWSet #
IH-243	01
IH-25	01
IH-26	01
IH-26A	01
IH-3	01

Door #	HWSet #
IH-4	01
IH-5	07
IH-6	03
IH-7	01
IH-8	03

Door #	HWSet #
IH-9	01
STOCK	10

END OF SECTION



INDIAN HILLS MIDDLE SCHOOL
 6400 MISSION ROAD
 SCALE: NOT TO SCALE