

2018 ASPHALT IMPROVEMENTS

SHAWNEE MISSION SCHOOL DISTRICT

8200 W. 71st Street, Shawnee Mission, KS 66204

CONSTRUCTION DOCUMENTS

we design the future®
 1828 Walnut Street Suite 922
 Kansas City, MO 64108
 T 816-442-7700
 333 Perry Street Suite 205
 Castle Rock, CO 80104
 T 719-313-9729
 HOLLISANDMILLER.COM

hollis + miller architects
 architects
 R
 Q
 P
 N
 M
 L
 K
 J
 H
 G
 F
 E
 D
 C
 B
 A

INDEX OF DRAWINGS

- ARCHITECTURAL SITE
- AS101 COMANCHE ELEMENTARY SCHOOL
 - AS102 CORINTH ELEMENTARY SCHOOL
 - AS103 INDIAN WOODS MIDDLE SCHOOL
 - AS104 OVERLAND PARK ELEMENTARY SCHOOL
 - AS105 SHAWNEE MISSION SOFTBALL FIELDS
 - AS106 SHAWNEE MISSION SOUTH HIGH SCHOOL
 - AS107 SHAWNEE MISSION WEST HIGH SCHOOL

STATEMENT OF RESPONSIBILITY

I HEREBY STATE THAT THE DRAWINGS INTENDED TO BE AUTHENTICATED BY MY SEAL ARE LIMITED TO THE FOLLOWING DRAWING SHEETS:

AS101, AS102, AS103, AS104, AS105, AS106, AS107

I HEREBY DISCLAIM ANY RESPONSIBILITY FOR ALL OTHER DRAWINGS, ESTIMATES, REPORTS AND OTHER DOCUMENTS OR INSTRUMENTS RELATING TO OR INTENDED TO BE USED FOR ANY PART OR PARTS OF THE ARCHITECTURAL OR ENGINEERING PROJECT OR SURVEY.

ARCHITECT

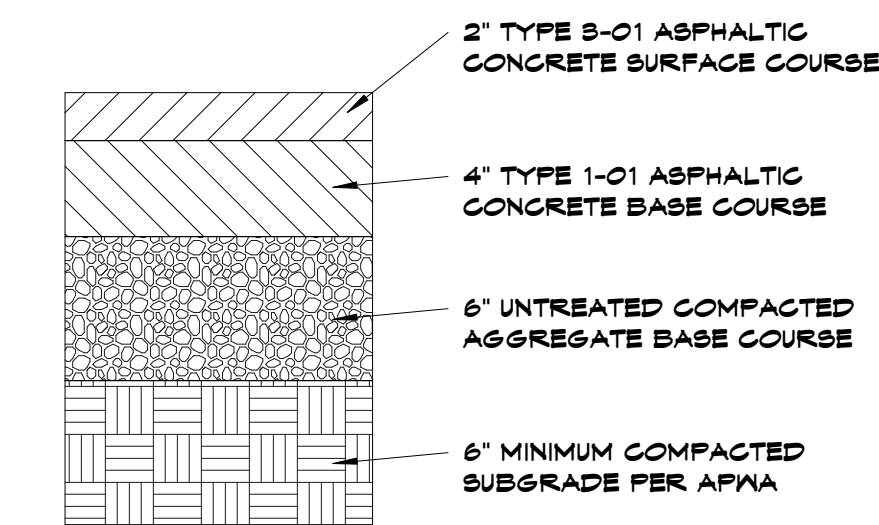


DATE

DESIGN TEAM

ARCHITECTURAL DESIGN:

Hollis + Miller Architects
 1828 Walnut Street Ste 922
 Kansas City, MO 64108
 CONTACT: Justin Durham
 PHONE: (816) 442-7700
 FAX: (816) 599-2545



D13

Scale
 1 1/2" = 1'-0"

FULL DEPTH ASPHALT REPAIR

PROJECT LOCATIONS

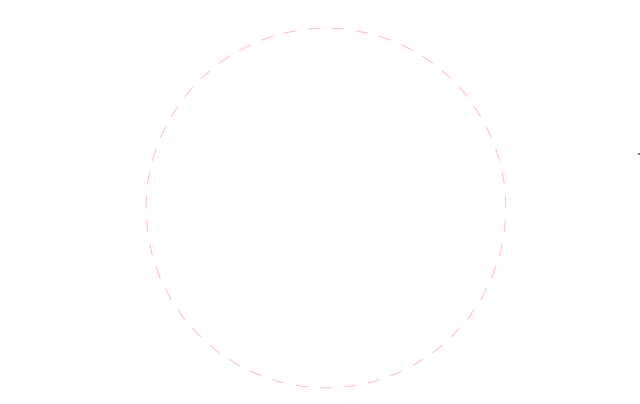
- COMANCHE ELEMENTARY SCHOOL - 200 Grant Ave, Overland Park, KS 66204
- CORINTH ELEMENTARY SCHOOL - 8801 Mission Rd, Leawood, KS 66206
- INDIAN WOODS MIDDLE SCHOOL - 9100 Woodson Dr, Shawnee Mission, KS 66207
- OVERLAND PARK ELEMENTARY SCHOOL - 5150 Santa Fe Dr, Shawnee, KS 66204
- SHAWNEE MISSION SOFTBALL FIELDS - 6101 Maurer Rd, Shawnee, KS 66217
- SHAWNEE MISSION SOUTH HIGH SCHOOL - 5500 W 107th St, Overland Park, KS 66207
- SHAWNEE MISSION WEST HIGH SCHOOL - 8800 W 85th St, Overland Park, KS 66212

SMUSD 2018 Asphalt Improvements
 Shawnee Mission School District
 8200 W. 71st Street, Shawnee Mission, KS 66204

100% CONSTRUCTION DOCUMENTS

REVISIONS:

#	Description	Date



The Designer/Architect assumes no liability for the use of these drawings for any purpose other than that for which they were prepared. The Designer/Architect assumes no liability for the use of these drawings for any purpose other than that for which they were prepared.

JOB NO: 17100.00
 DRAWN BY: JD
 CHECKED BY: JD
 DATE: January 12, 2018

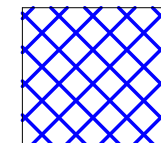
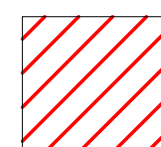
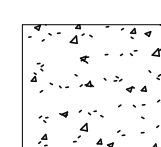
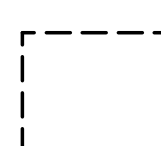
GOOO

SMUSD BID NUMBER 18-002

COVER SHEET



PAVEMENT LEGEND

-  2" OVERLAY & NEW STRIPING
-  SLURRY SEAL & NEW STRIPING
-  CONCRETE (SANDCUT AND REMOVE EXISTING PAVEMENT)
-  FULL DEPTH REPAIR

GENERAL NOTES

1. CONTRACTOR FIELD VERIFY ALL AREAS PRIOR TO BID FOR QUANTITIES AND FIELD CONDITIONS.
 2. ALL STRIPING TO BE REINSTALLED TO MATCH EXISTING CONDITIONS.
 3. PAVEMENT RECONSTRUCTION MAY REQUIRE SOIL TO BE REMOVED FROM THE SITE.
 4. ALL ASPHALT AND PAVING MATERIALS AND INSTALLATION SHALL MEET ALL STANDARDS OF APWA SECTION 2200 PAVING.
 5. FINE GRADE AND SEED ALL DISTURBED AREAS.
 6. INCLUDE 2,000 LF OF CRACK REPAIR AS PART OF BASE BID. FIELD VERIFY.
 7. QUANTITIES AND LOCATIONS FOR FULL DEPTH REPAIR ARE FOR BIDDING PURPOSES ONLY. CONTRACTOR SHALL VERIFY WITH OWNER / ARCHITECT PRIOR TO THE START OF WORK.
 8. EDGE MILL AT ALL TRANSITIONS TO SIDEWALKS, CURBS, EXISTING PAVEMENT ETC.
- COMANCHE ELEMENTARY SCHOOL ESTIMATED QUANTITIES:
 SLURRY SEAL 75,000 SF

we design the future®
 1828 Walnut Street Suite 922
 Kansas City, MO 64108
 T 816-442-7700

333 Perry Street Suite 205
 Castle Rock, CO 80104
 T 719-313-9729
 HOLLISANDMILLER.COM

Hollis + Miller Architects
 Missouri State Certificate of Authority
 Architecture # 0000161
 Structure # 250001733


hollis + miller architects

100% CONSTRUCTION DOCUMENTS

SMSD 2018 Asphalt Improvements
 Shawnee Mission School District
 8200 W. 71st Street, Shawnee Mission, KS 66204

REVISIONS:

#	Description	Date



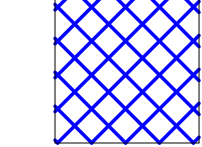
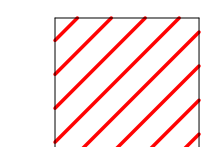
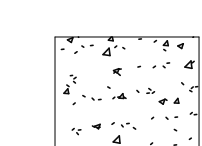
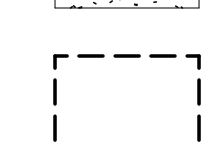
JOB NO: 17100.00
 DRAWN BY: Author
 CHECKED BY: Checker
 DATE: January 12, 2018

AS101
 SMSD BID NUMBER 18-002

A2 Scale Comanche Elementary School
 1/2" = 1'-0"



PAVEMENT LEGEND

-  2" OVERLAY & NEW STRIPING
-  SLURRY SEAL & NEW STRIPING
-  CONCRETE (BATCH AND REMOVE EXISTING PAVEMENT)
-  FULL DEPTH REPAIR

GENERAL NOTES

1. CONTRACTOR FIELD VERIFY ALL AREAS PRIOR TO BID FOR QUANTITIES AND FIELD CONDITIONS.
 2. ALL STRIPING TO BE REINSTALLED TO MATCH EXISTING CONDITIONS.
 3. PAVEMENT RECONSTRUCTION MAY REQUIRE SOIL TO BE REMOVED FROM THE SITE.
 4. ALL ASPHALT AND PAVING MATERIALS AND INSTALLATION SHALL MEET ALL STANDARDS OF AFPA SECTION 2200 PAVING.
 5. FINE GRADE AND SEED ALL DISTURBED AREAS.
 6. INCLUDE 2,000 LF OF CRACK REPAIR AS PART OF BASE BID. FIELD VERIFY.
 7. QUANTITIES AND LOCATIONS FOR FULL DEPTH REPAIR ARE FOR BIDDING PURPOSES ONLY. CONTRACTOR SHALL VERIFY WITH OWNER / ARCHITECT PRIOR TO THE START OF WORK.
 8. EDGE MILL AT ALL TRANSITIONS TO SIDEWALKS, CURBS, EXISTING PAVEMENT ETC.
- CORINTH ELEMENTARY SCHOOL ESTIMATED QUANTITIES: SURFPAV
- | | |
|---------------------------|-----------|
| ASPHALT FULL DEPTH REPAIR | 4,000 SF |
| 12" REINFORCED CONCRETE | 1,800 SF |
| 2" OVERLAY | 40,000 SF |

we design the future®

1828 Walnut Street Suite 922
Kansas City, MO 64108
T 816-442-7700

333 Perry Street Suite 205
Castle Rock, CO 80104
T 719-313-9729

HOLLISANDMILLER.COM

Hollis + Miller Architects
Missouri State Certificate of Authority
Architecture # 00000161
Structural # 250001733


hollis + miller architects

100% CONSTRUCTION DOCUMENTS

SMSD 2018 Asphalt Improvements
Shawnee Mission School District
8200 W. 71st Street, Shawnee Mission, KS 66204

REVISIONS:

#	Description	Date



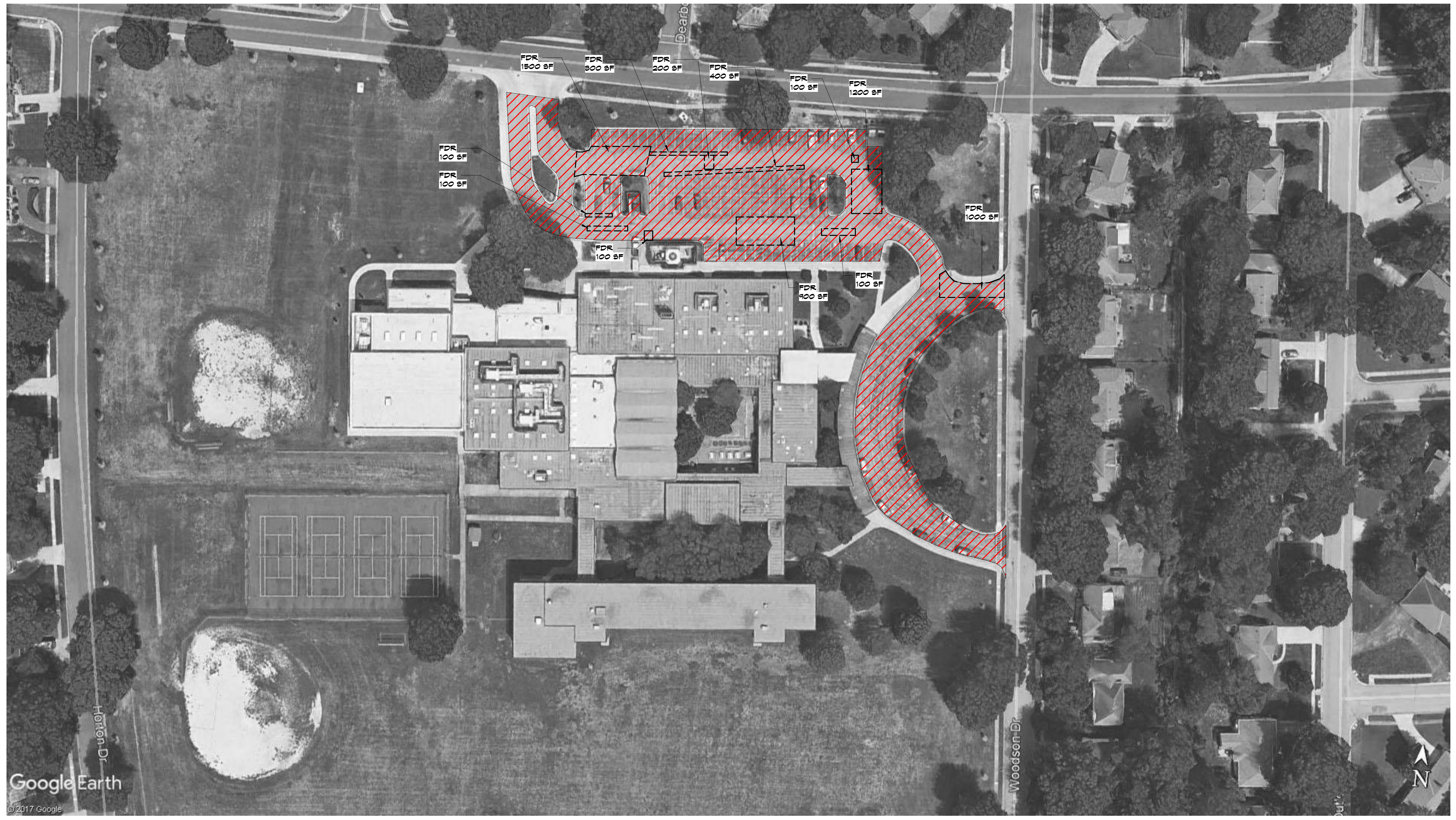
This document is the property of Hollis + Miller Architects. It is to be used only for the project and location specified. It is not to be reproduced, stored in a retrieval system, or transmitted in any form or by any means, electronic, mechanical, photocopying, recording, or by any information storage and retrieval system, without the prior written permission of Hollis + Miller Architects.

JOB NO: 17100.00
DRAWN BY: JD
CHECKED BY: JD
DATE: January 12, 2018

AS102

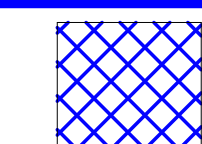
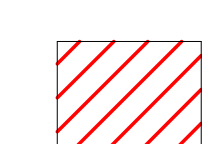
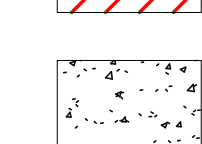
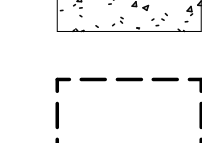
SMSD BID NUMBER 18-002

A2 Scale Corinth Elementary School
6" = 1'-0"



SHEET KEYNOTE LEGEND

PAVEMENT LEGEND

-  2" OVERLAY & NEW STRIPING
-  SLURRY SEAL & NEW STRIPING
-  CONCRETE (BANCUT AND REMOVE EXISTING PAVEMENT)
-  FULL DEPTH REPAIR

GENERAL NOTES

1. CONTRACTOR FIELD VERIFY ALL AREAS PRIOR TO BID FOR QUANTITIES AND FIELD CONDITIONS.
 2. ALL STRIPING TO BE REINSTALLED TO MATCH EXISTING CONDITIONS.
 3. PAVEMENT RECONSTRUCTION MAY REQUIRE SOIL TO BE REMOVED FROM THE SITE.
 4. ALL ASPHALT AND PAVING MATERIALS AND INSTALLATION SHALL MEET ALL STANDARDS OF AFPA SECTION 2200 PAVING.
 5. FINE GRADE AND SEED ALL DISTURBED AREAS.
 6. INCLUDE 2,000 LF OF CRACK REPAIR AS PART OF BASE BID. FIELD VERIFY.
 7. QUANTITIES AND LOCATIONS FOR FULL DEPTH REPAIR ARE FOR BIDDING PURPOSES ONLY. CONTRACTOR SHALL VERIFY WITH OWNER / ARCHITECT PRIOR TO THE START OF WORK.
 8. EDGE MILL AT ALL TRANSITIONS TO SIDEWALKS, CURBS, EXISTING PAVEMENT ETC.
- INDIAN WOODS MIDDLE SCHOOL ESTIMATED QUANTITIES:
- | | |
|---------------------------|-----------|
| ASPHALT FULL DEPTH REPAIR | 6,000 SF |
| SLURRY SEAL | 66,000 SF |

we design the future®
 1828 Walnut Street Suite 922
 Kansas City, MO 64108
 T 816-442-7700

333 Perry Street Suite 205
 Castle Rock, CO 80104
 T 719-313-9729

HOLLISANDMILLER.COM

Hollis + Miller Architects
 Missouri State Certificate of Authority
 Architecture # 00000101
 Structure # 250001733

hollis + miller architects

SMSD 2018 Asphalt Improvements
 Shawnee Mission School District
 8200 W. 71st Street, Shawnee Mission, KS 66204

100% CONSTRUCTION DOCUMENTS

REVISIONS:

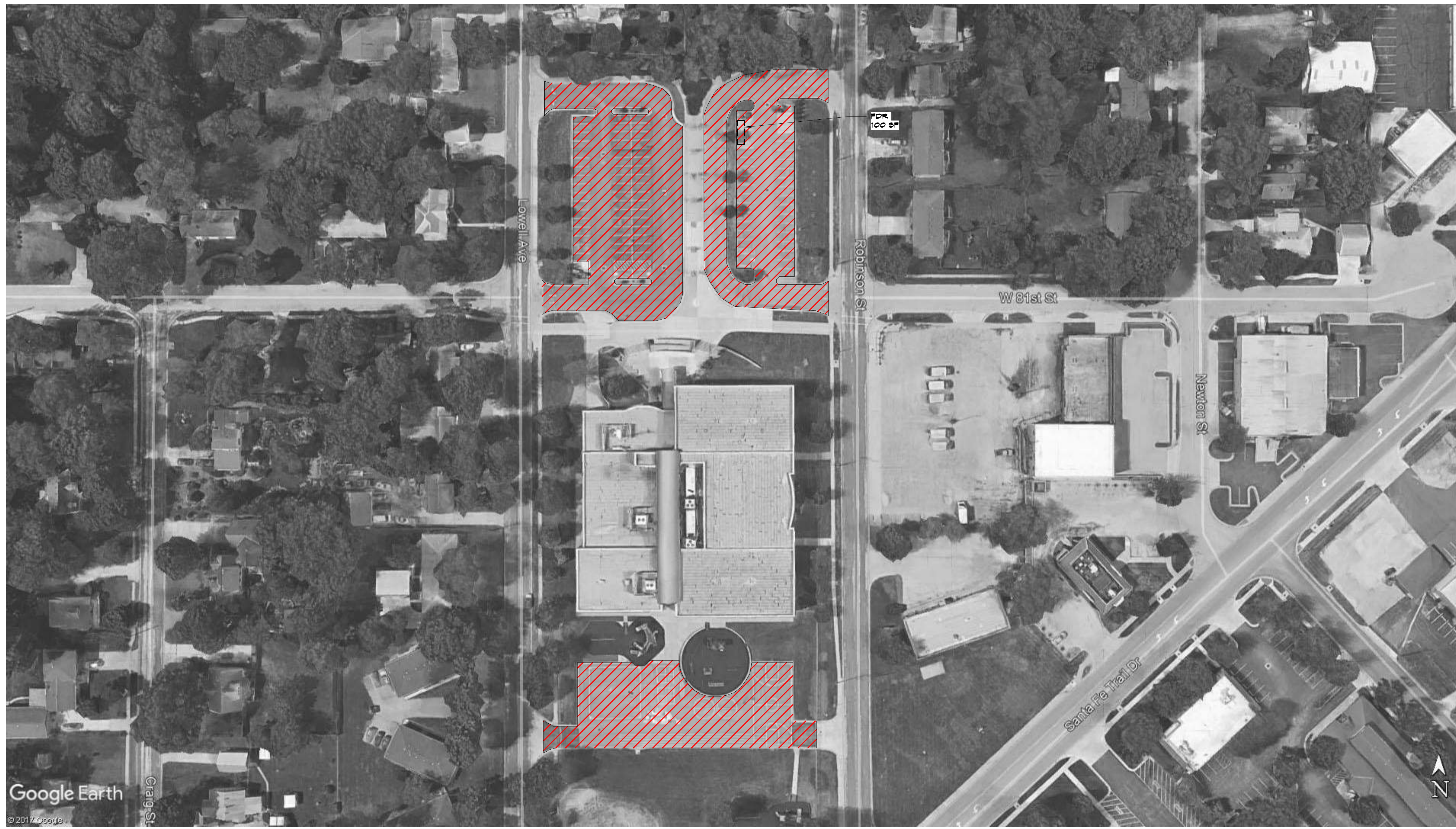
#	Description	Date



JOB NO: 17100.00
 DRAWN BY: JD
 CHECKED BY: JD
 DATE: January 12, 2018

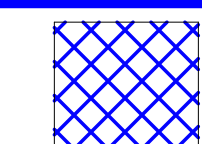
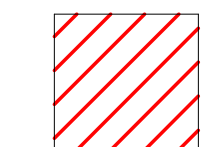
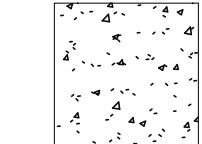
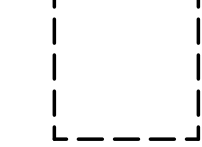
AS103
 SMSD BID NUMBER 18-002

A2 Scale Indian Woods Middle School
 6" = 1'-0"



SHEET KEYNOTE LEGEND

PAVEMENT LEGEND

-  2" OVERLAY & NEW STRIPING
-  SLURRY SEAL & NEW STRIPING
-  CONCRETE (BANCUT AND REMOVE EXISTING PAVEMENT)
-  FULL DEPTH REPAIR

GENERAL NOTES

1. CONTRACTOR FIELD VERIFY ALL AREAS PRIOR TO BID FOR QUANTITIES AND FIELD CONDITIONS.
 2. ALL STRIPING TO BE REINSTALLED TO MATCH EXISTING CONDITIONS.
 3. PAVEMENT RECONSTRUCTION MAY REQUIRE SOIL TO BE REMOVED FROM THE SITE.
 4. ALL ASPHALT AND PAVING MATERIALS AND INSTALLATION SHALL MEET ALL STANDARDS OF AFPA SECTION 2200 PAVING.
 5. FINE GRADE AND SEED ALL DISTURBED AREAS.
 6. INCLUDE 2,000 LF OF CRACK REPAIR AS PART OF BASE BID. FIELD VERIFY.
 7. QUANTITIES AND LOCATIONS FOR FULL DEPTH REPAIR ARE FOR BIDDING PURPOSES ONLY. CONTRACTOR SHALL VERIFY WITH OWNER / ARCHITECT PRIOR TO THE START OF WORK.
 8. EDGE MILL AT ALL TRANSITIONS TO SIDEWALKS, CURBS, EXISTING PAVEMENT ETC.
- OVERLAND PARK ELEMENTARY SCHOOL ESTIMATED QUANTITIES:
- | | |
|---------------------------|-----------|
| ASPHALT FULL DEPTH REPAIR | 100 SF |
| SLURRY SEAL | 64,500 SF |

we design the future®

1828 Walnut Street Suite 922
Kansas City, MO 64108
T 816-442-7700

333 Perry Street Suite 205
Castle Rock, CO 80104
T 719-313-9729

HOLLISANDMILLER.COM

Hollis + Miller Architects
Missouri State Certificate of Authority
Architecture # 0000161
Structural # 250001733

hollis + miller architects

100% CONSTRUCTION DOCUMENTS

SMSD 2018 Asphalt Improvements
Shawnee Mission School District
8200 W. 71st Street, Shawnee Mission, KS 66204

REVISIONS:

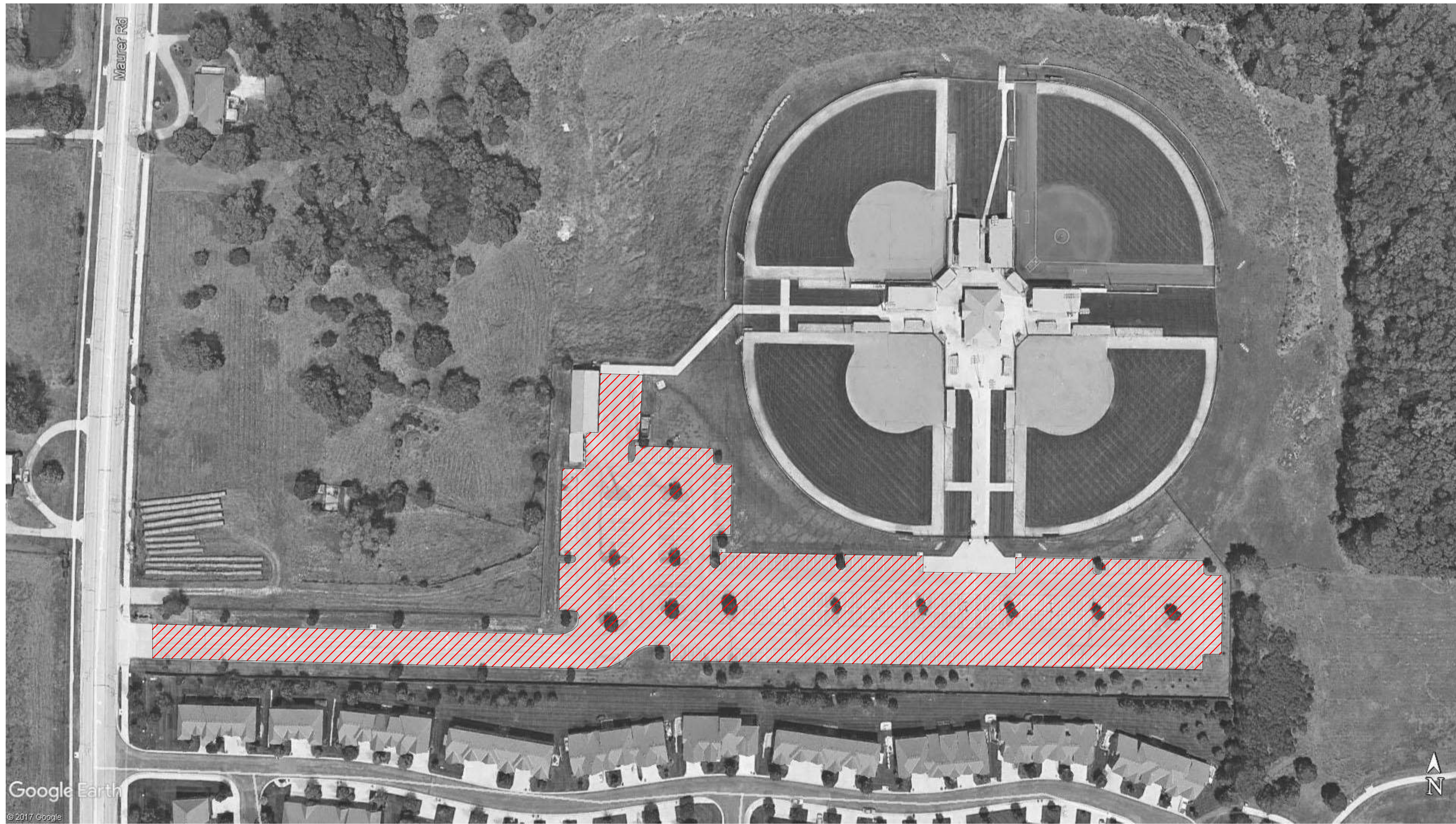
#	Description	Date

MARK C. HORNER
LICENSED PROFESSIONAL ARCHITECT
KANSAS
4722
JAN 12, 2018

JOB NO: 17100.00
DRAWN BY: JD
CHECKED BY: JD
DATE: January 12, 2018

AS104
SMSD BID NUMBER 18-002

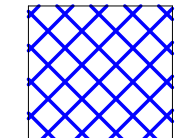
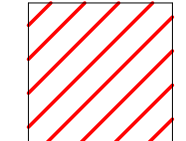
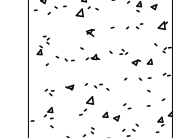

A2 Scale Overland Park Elementary
6" = 1'-0"



Google Earth
© 2017 Google

SHEET KEYNOTE LEGEND

PAVEMENT LEGEND

-  2" OVERLAY & NEW STRIPING
-  SLURRY SEAL & NEW STRIPING
-  CONCRETE (BANK CUT AND REMOVE EXISTING PAVEMENT)
-  FULL DEPTH REPAIR

GENERAL NOTES

1. CONTRACTOR FIELD VERIFY ALL AREAS PRIOR TO BID FOR QUANTITIES AND FIELD CONDITIONS.
 2. ALL STRIPING TO BE REINSTALLED TO MATCH EXISTING CONDITIONS.
 3. PAVEMENT RECONSTRUCTION MAY REQUIRE SOIL TO BE REMOVED FROM THE SITE.
 4. ALL ASPHALT AND PAVING MATERIALS AND INSTALLATION SHALL MEET ALL STANDARDS OF AFPA SECTION 2200 PAVING.
 5. FINE GRADE AND SEED ALL DISTURBED AREAS.
 6. INCLUDE 2,000 LF OF CRACK REPAIR AS PART OF BASE BID. FIELD VERIFY.
 7. QUANTITIES AND LOCATIONS FOR FULL DEPTH REPAIR ARE FOR BIDDING PURPOSES ONLY. CONTRACTOR SHALL VERIFY WITH OWNER / ARCHITECT PRIOR TO THE START OF WORK.
 8. EDGE MILL AT ALL TRANSITIONS TO SIDEWALKS, CURBS, EXISTING PAVEMENT ETC.
- SHAWNEE MISSION SOFTBALL FIELDS ESTIMATED QUANTITIES:
- | | |
|-------------|------------|
| CONCRETE | 159,000 SF |
| SLURRY SEAL | 159,000 SF |

we design the future®
 1828 Walnut Street Suite 922
 Kansas City, MO 64108
 T 816.442.7700
 333 Perry Street Suite 205
 Castle Rock, CO 80104
 T 719.313.9729
 HOLLISANDMILLER.COM

Hollis + Miller Architects
 Missouri State Certificate of Authority
 Architecture # 0000161
 Structure # 250001733

hollis + miller architects

100% CONSTRUCTION DOCUMENTS

SMSD 2018 Asphalt Improvements
 Shawnee Mission School District
 8200 W. 71st Street, Shawnee Mission, KS 66204

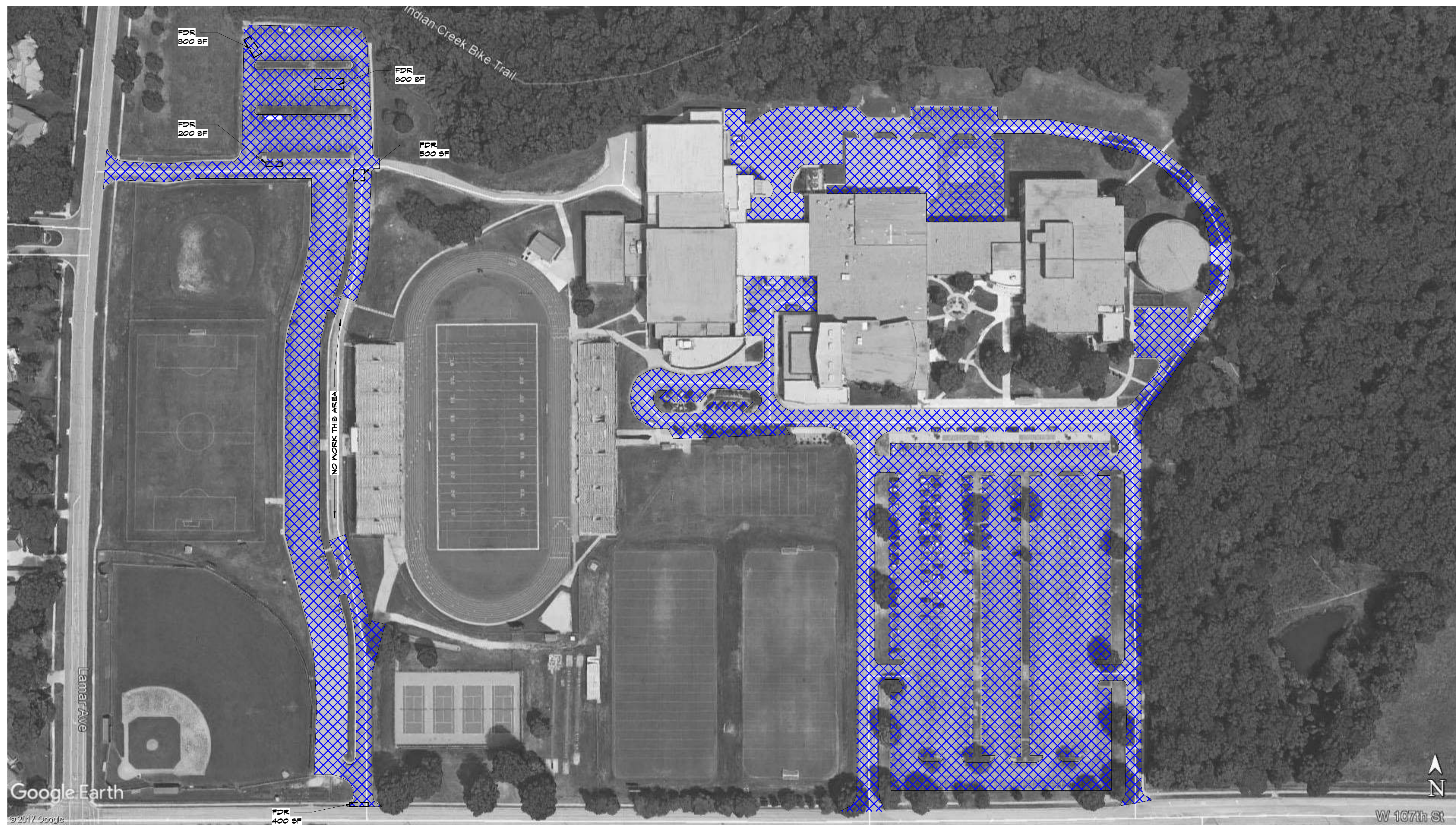
REVISIONS:

#	Description	Date



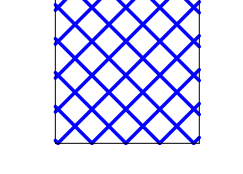
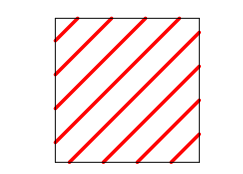
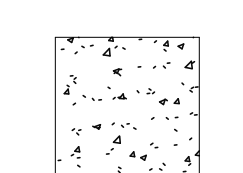
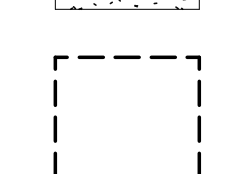
JOB NO: 17100.00
 DRAWN BY: JD
 CHECKED BY: JD
 DATE: January 12, 2018

AS105
 SMSD BID NUMBER 18-002



SHEET KEYNOTE LEGEND

PAVEMENT LEGEND

-  2" OVERLAY & NEW STRIPING
-  SLURRY SEAL & NEW STRIPING
-  CONCRETE (BATCH CUT AND REMOVE EXISTING PAVEMENT)
-  FULL DEPTH REPAIR

GENERAL NOTES

1. CONTRACTOR FIELD VERIFY ALL AREAS PRIOR TO BID FOR QUANTITIES AND FIELD CONDITIONS.
2. ALL STRIPING TO BE REINSTALLED TO MATCH EXISTING CONDITIONS.
3. PAVEMENT RECONSTRUCTION MAY REQUIRE SOIL TO BE REMOVED FROM THE SITE.
4. ALL ASPHALT AND PAVING MATERIALS AND INSTALLATION SHALL MEET ALL STANDARDS OF AFPA SECTION 2200 PAVING.
5. FINE GRADE AND SEED ALL DISTURBED AREAS.
6. INCLUDE 2,000 LF OF CRACK REPAIR AS PART OF BASE BID. FIELD VERIFY.
7. QUANTITIES AND LOCATIONS FOR FULL DEPTH REPAIR ARE FOR BIDDING PURPOSES ONLY. CONTRACTOR SHALL VERIFY WITH OWNER / ARCHITECT PRIOR TO THE START OF WORK.
8. EDGE MILL AT ALL TRANSITIONS TO SIDEWALKS, CURBS, EXISTING PAVEMENT ETC. SHAWNEE MISSION SOUTH SCHOOL ESTIMATED QUANTITIES:


ASPHALT FULL DEPTH REPAIR	2,000 SF
2" OVERLAY	\$20,000 SF

hollis + miller architects
 we design the future®
 1828 Walnut Street Suite 922
 Kansas City, MO 64108
 T 816-442-7700
 333 Perry Street Suite 205
 Castle Rock, CO 80104
 T 719-313-9729
 HOLLISANDMILLER.COM

100% CONSTRUCTION DOCUMENTS
SMSD 2018 Asphalt Improvements
 Shawnee Mission School District
 8200 W. 71st Street, Shawnee Mission, KS 66204

REVISIONS:

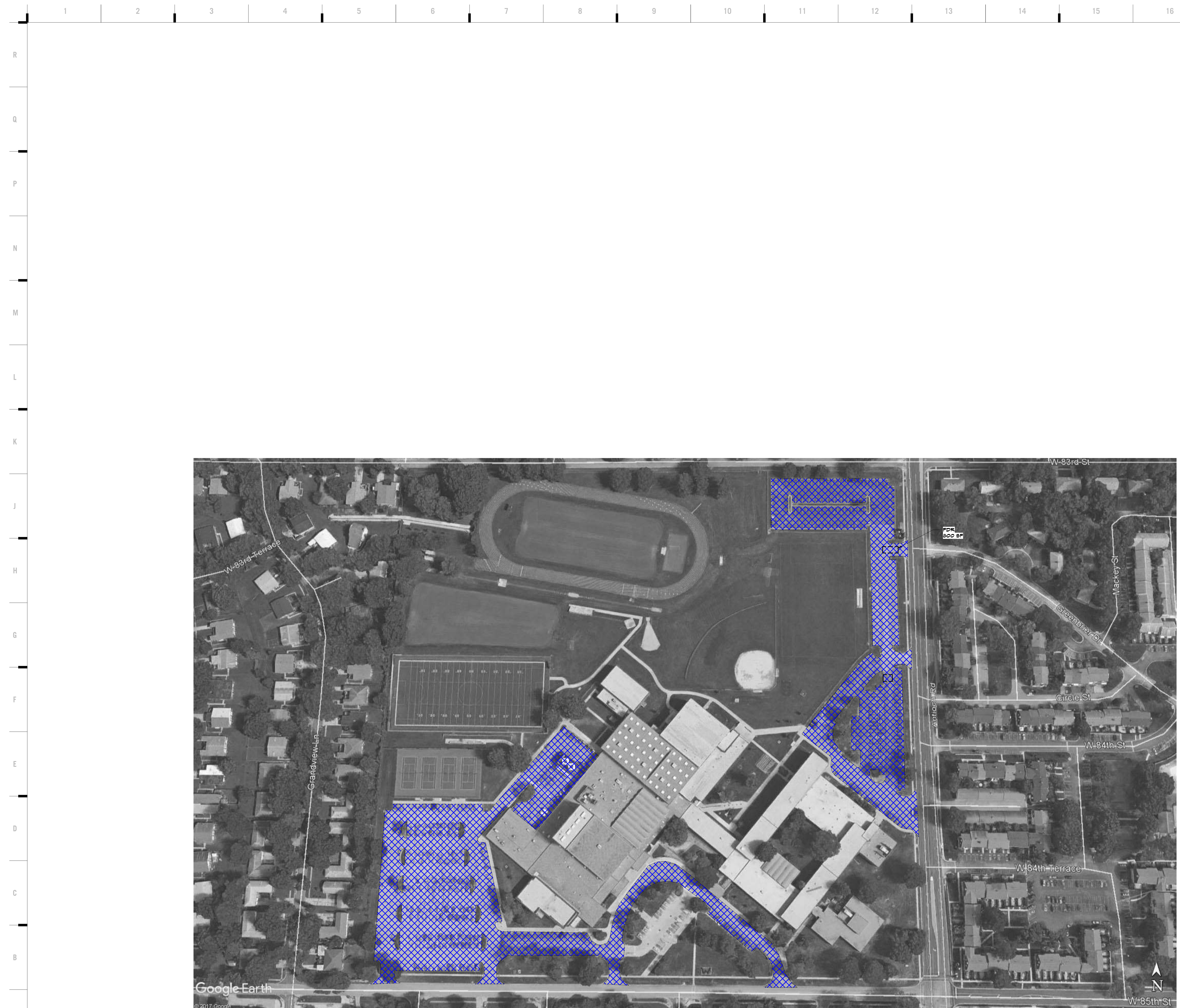
#	Description	Date



JOB NO: 17100.00
 DRAWN BY: JD
 CHECKED BY: JD
 DATE: January 12, 2018

AS106
 SMSD BID NUMBER 18-002

A2	Scale	Shawnee Mission South High School
	6" = 1'-0"	



SHEET KEYNOTE LEGEND

we design the future®
 1828 Walnut Street Suite 922
 Kansas City, MO 64108
 T 816-442-7700
 333 Perry Street Suite 205
 Castle Rock, CO 80104
 T 719-313-9729
 HOLLISANDMILLER.COM
 Hollis + Miller Architects
 Missouri State Certificate of Authority
 Architecture # 0000161
 Structure # 250001733



PAVEMENT LEGEND

- 2" OVERLAY & NEW STRIPING
- SLURRY SEAL & NEW STRIPING
- CONCRETE (BAYOUT AND REMOVE EXISTING PAVEMENT)
- FULL DEPTH REPAIR

GENERAL NOTES

1. CONTRACTOR FIELD VERIFY ALL AREAS PRIOR TO BID FOR QUANTITIES AND FIELD CONDITIONS.
2. ALL STRIPING TO BE REINSTALLED TO MATCH EXISTING CONDITIONS.
3. PAVEMENT RECONSTRUCTION MAY REQUIRE SOIL TO BE REMOVED FROM THE SITE.
4. ALL ASPHALT AND PAVING MATERIALS AND INSTALLATION SHALL MEET ALL STANDARDS OF AFPA SECTION 2200 PAVING.
5. FINE GRADE AND SEED ALL DISTURBED AREAS.
6. INCLUDE 2,000 LF OF CRACK REPAIR AS PART OF BASE BID. FIELD VERIFY.
7. QUANTITIES AND LOCATIONS FOR FULL DEPTH REPAIR ARE FOR BIDDING PURPOSES ONLY. CONTRACTOR SHALL VERIFY WITH OWNER / ARCHITECT PRIOR TO THE START OF WORK.
8. EDGE MILL AT ALL TRANSITIONS TO SIDEWALKS, CURBS, EXISTING PAVEMENT ETC. SHAWNEE MISSION WEST HIGH SCHOOL ESTIMATED QUANTITIES:
 ASPHALT FULL DEPTH REPAIR 800 SF
 2" OVERLAY 910,000 SF

100% CONSTRUCTION DOCUMENTS

SMSD 2018 Asphalt Improvements
 Shawnee Mission School District
 8200 W. 71st Street, Shawnee Mission, KS 66204

REVISIONS:

#	Description	Date



JOB NO: 17100.00
 DRAWN BY: JD
 CHECKED BY: JD
 DATE: January 12, 2018

AS107
 SMSD BID NUMBER 18-002

A2	Scale	Shawnee Mission West High School
	6" = 1'-0"	