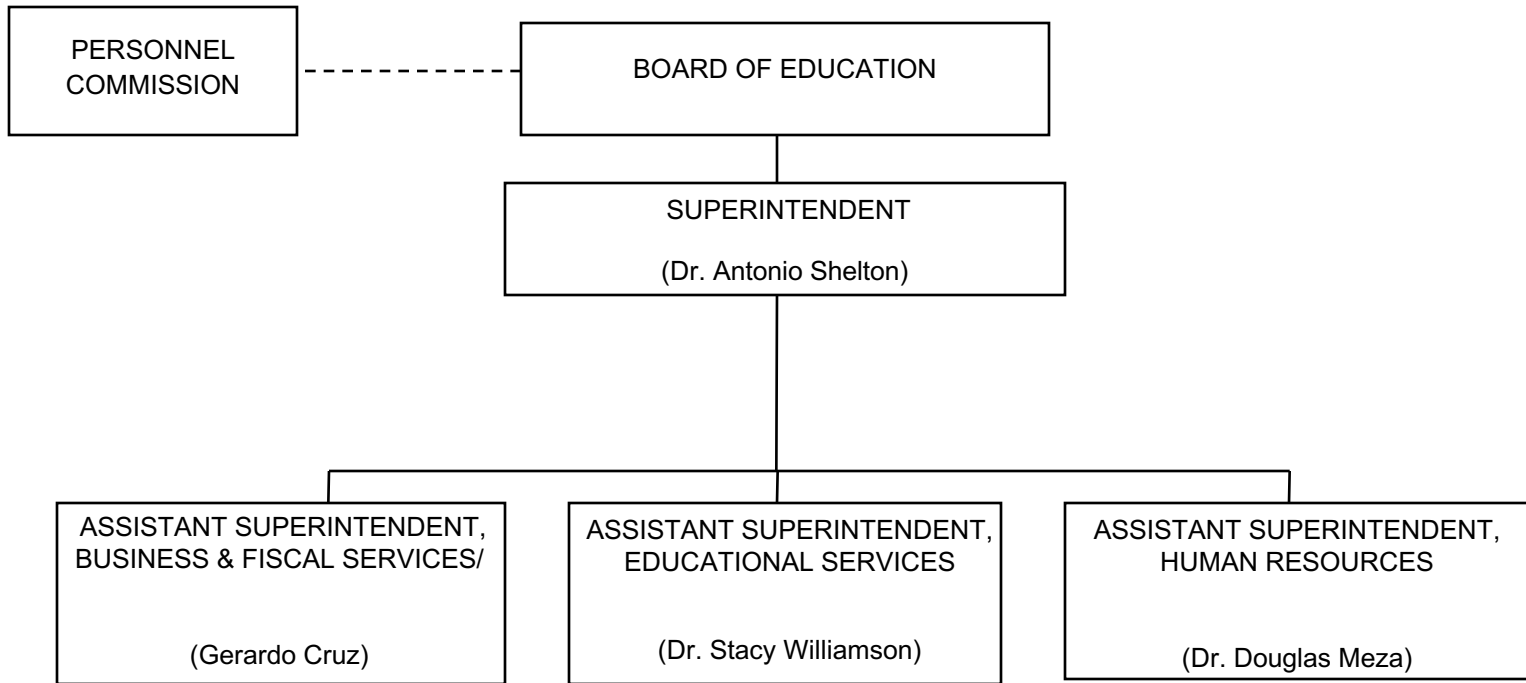


# DISTRICT ORGANIZATION



# BOARD OF EDUCATION

## **MEMBERS**

Jennifer Smith, President  
Laurie Lieberman, Vice President  
Jon Kean  
Maria Leon-Vazquez  
Alicia Mignano  
Stacy Rouse  
Richard Tahvildaran-Jesswein

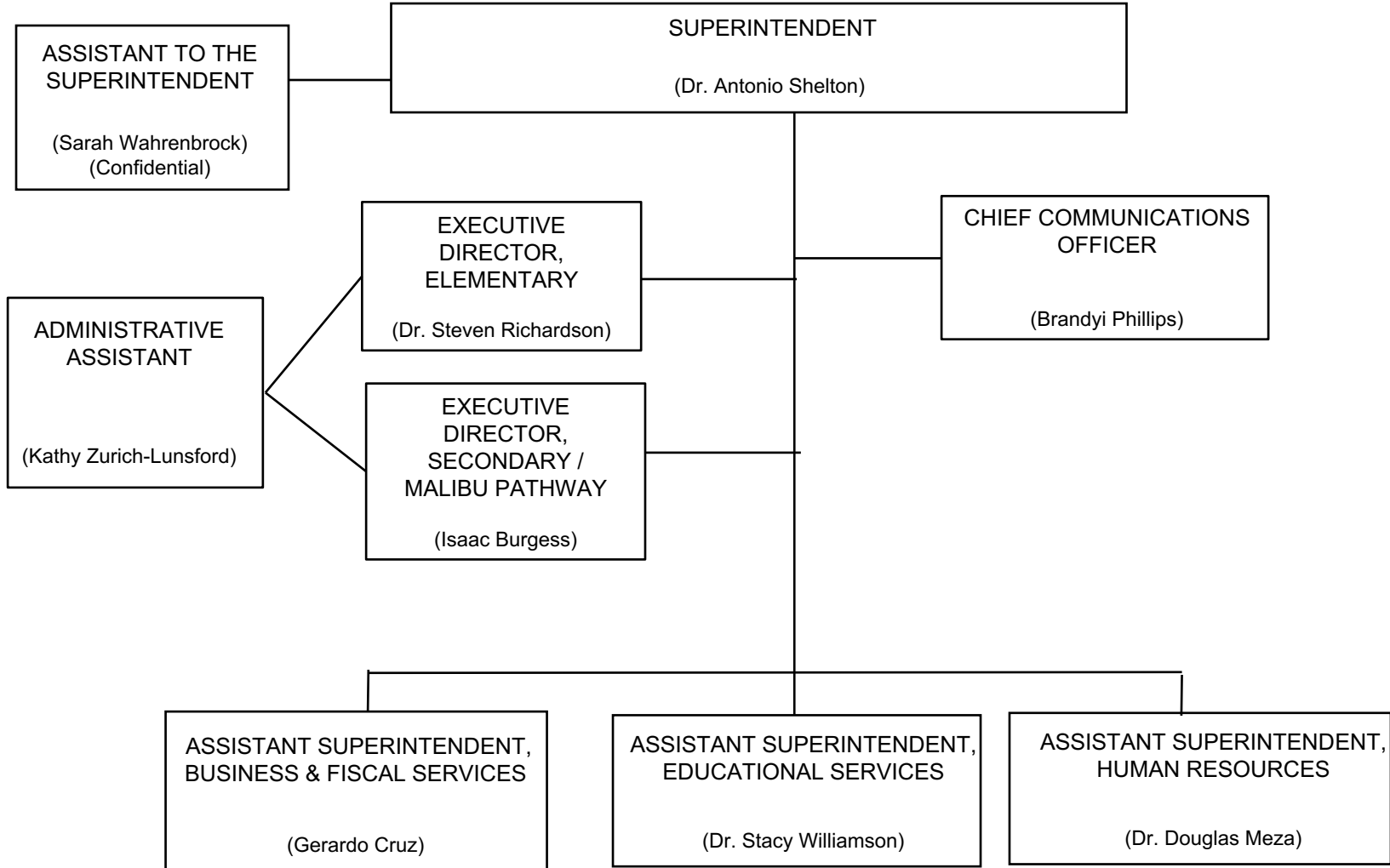
## **STUDENT MEMBERS**

Haley Castanaza– Santa Monica HS  
tbd – Malibu HS  
tbd – Olympic HS

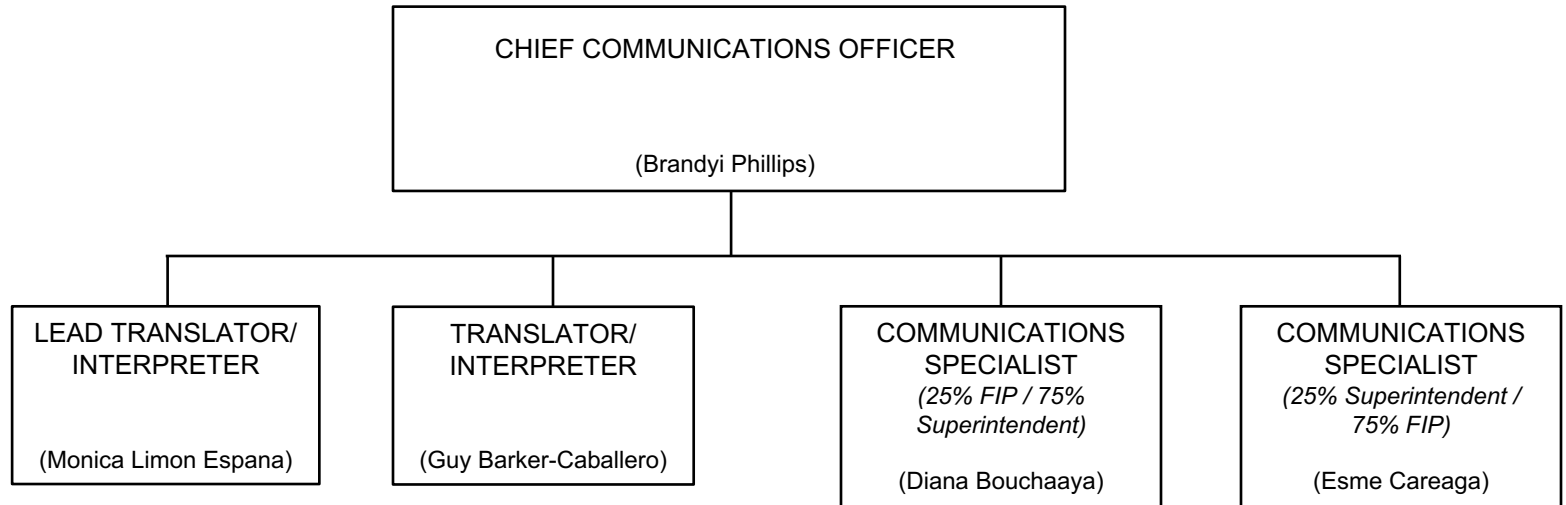
## **SUPERINTENDENT**

(Dr. Antonio Shelton)

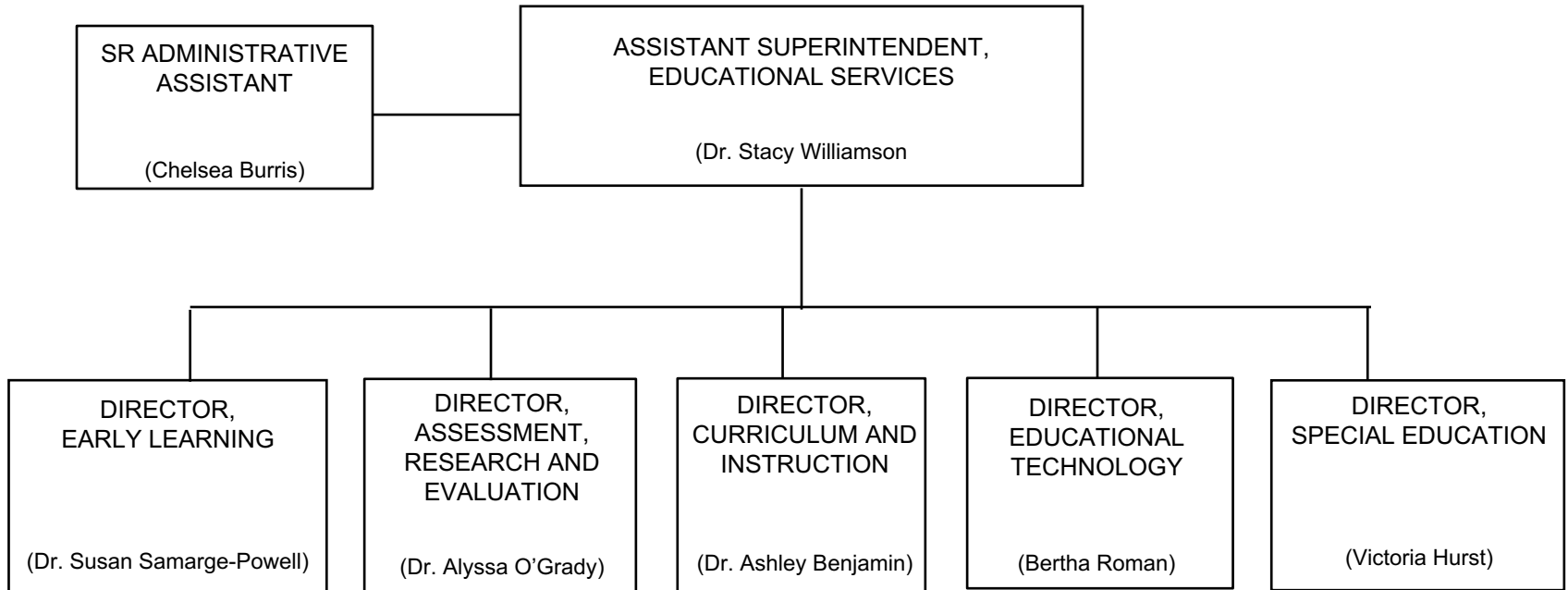
# SUPERINTENDENT



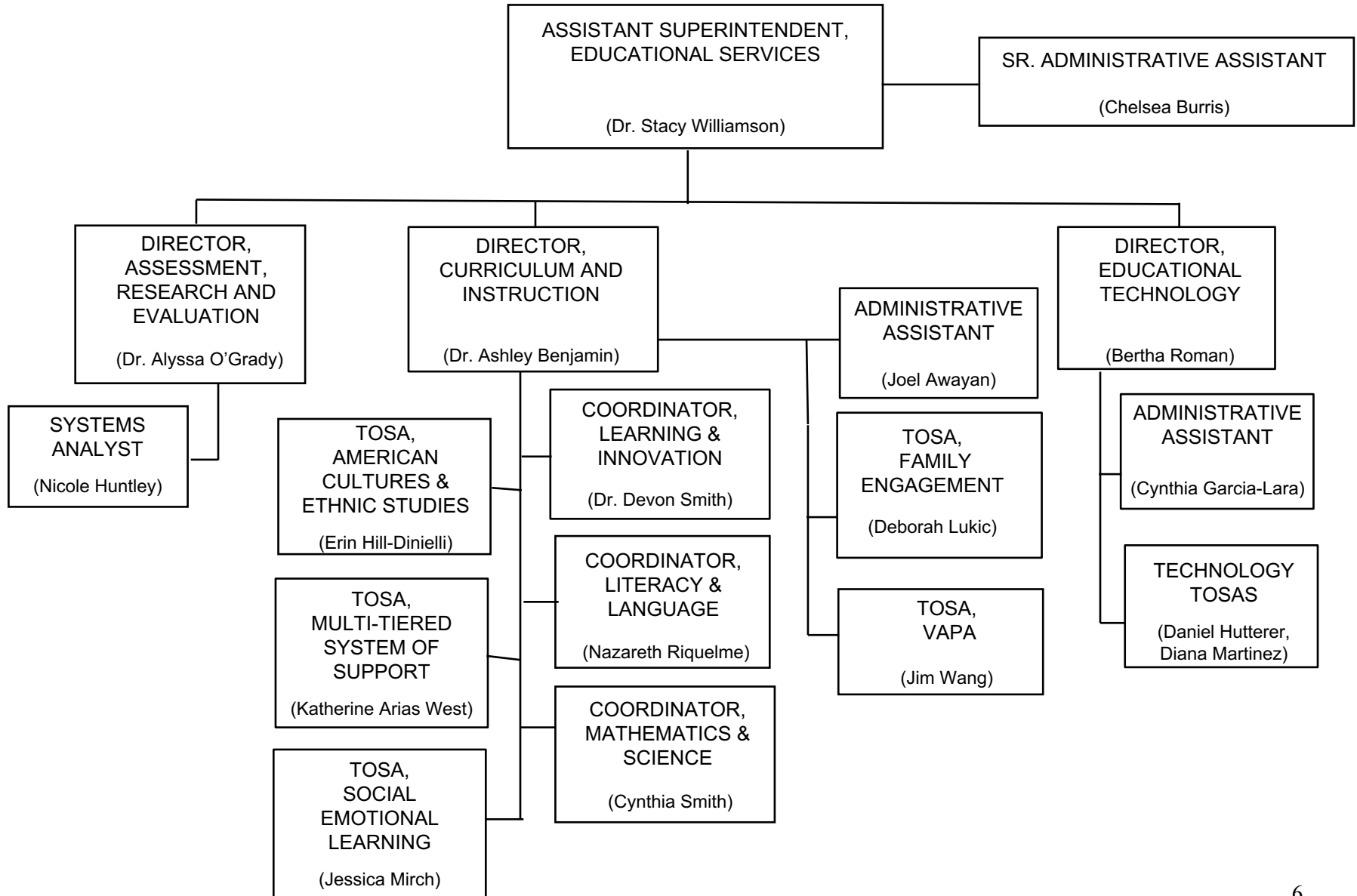
# COMMUNICATIONS



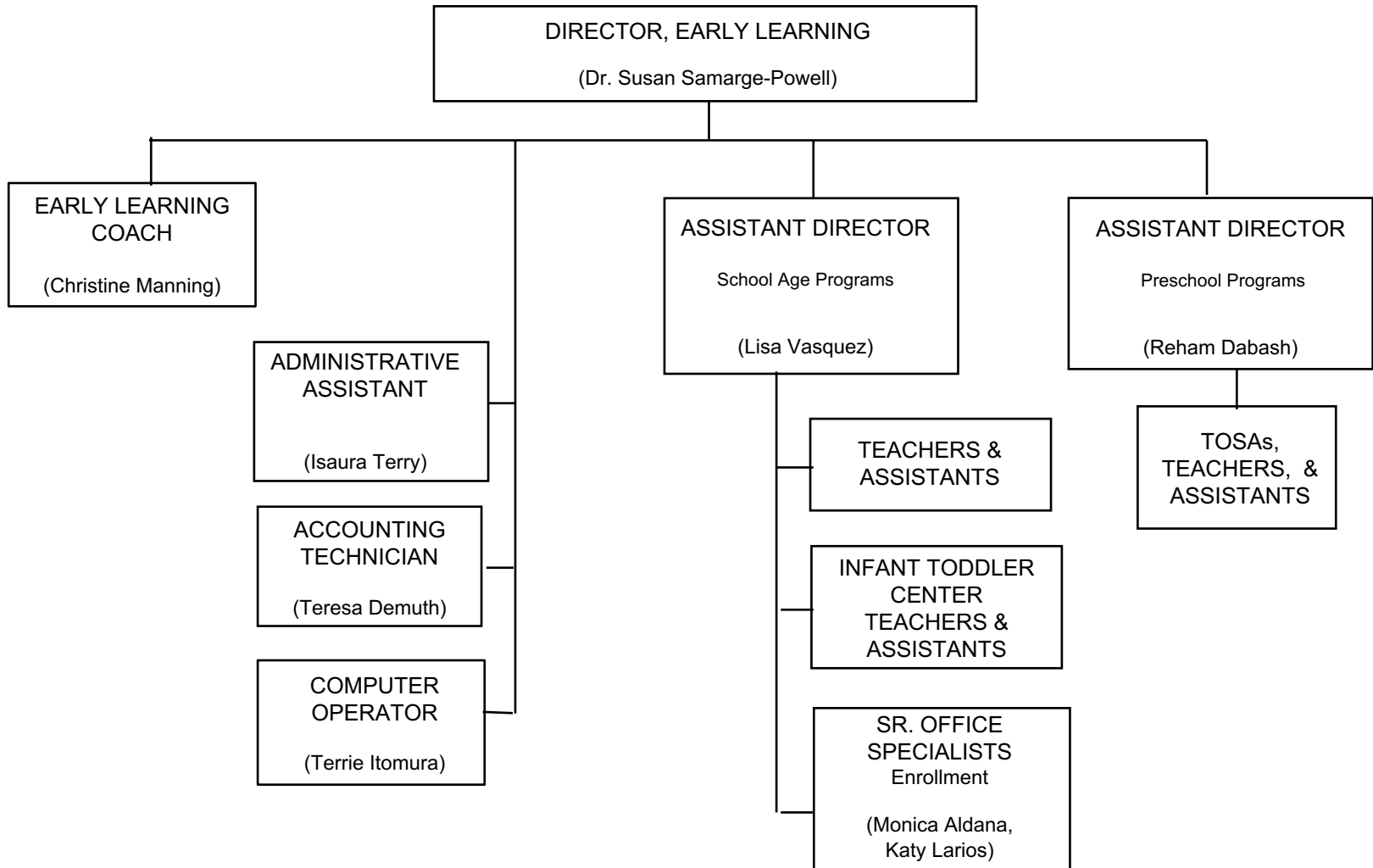
## EDUCATIONAL SERVICES DEPARTMENT



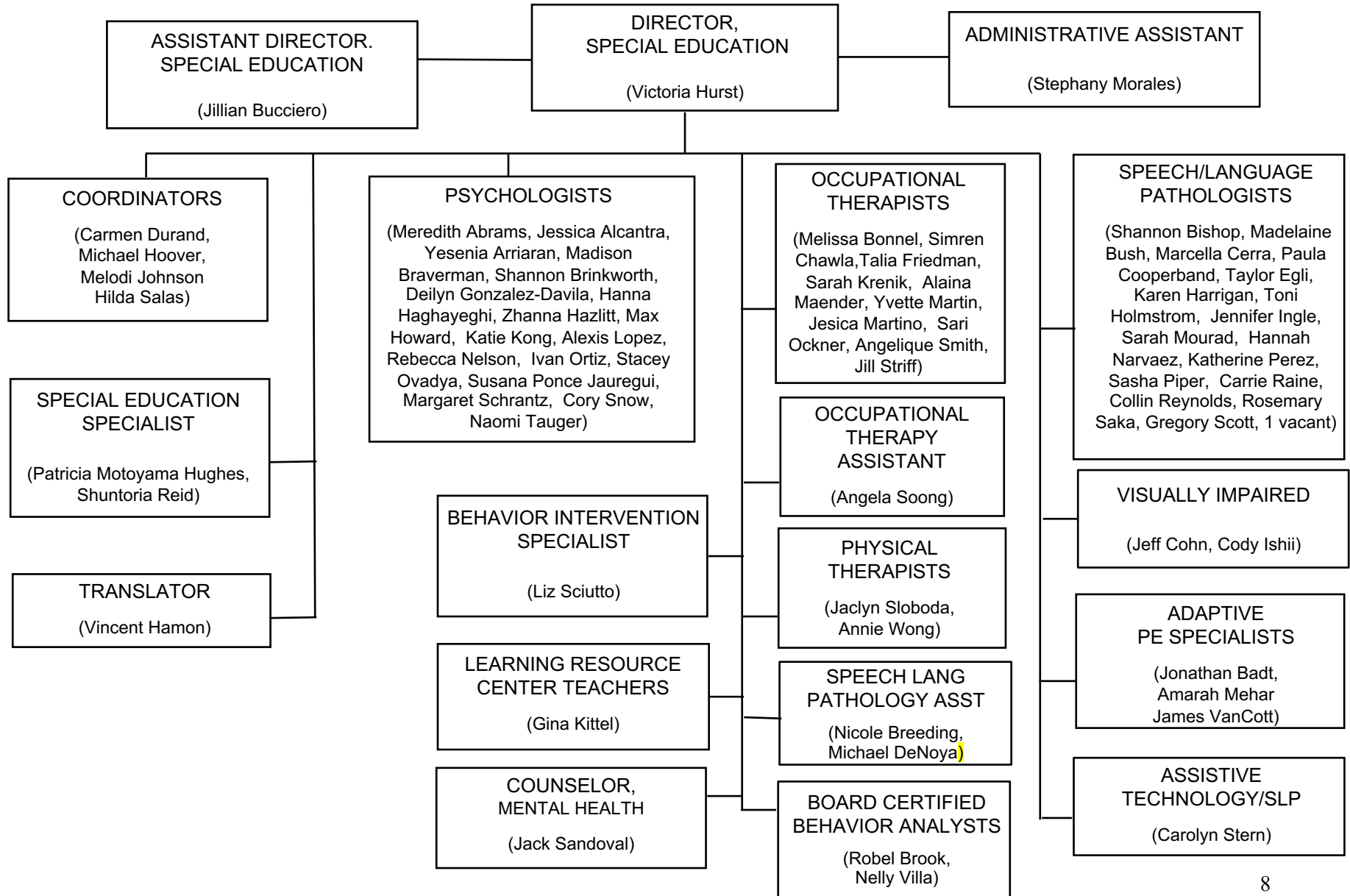
# EDUCATIONAL SERVICES



# CHILD DEVELOPMENT SERVICES

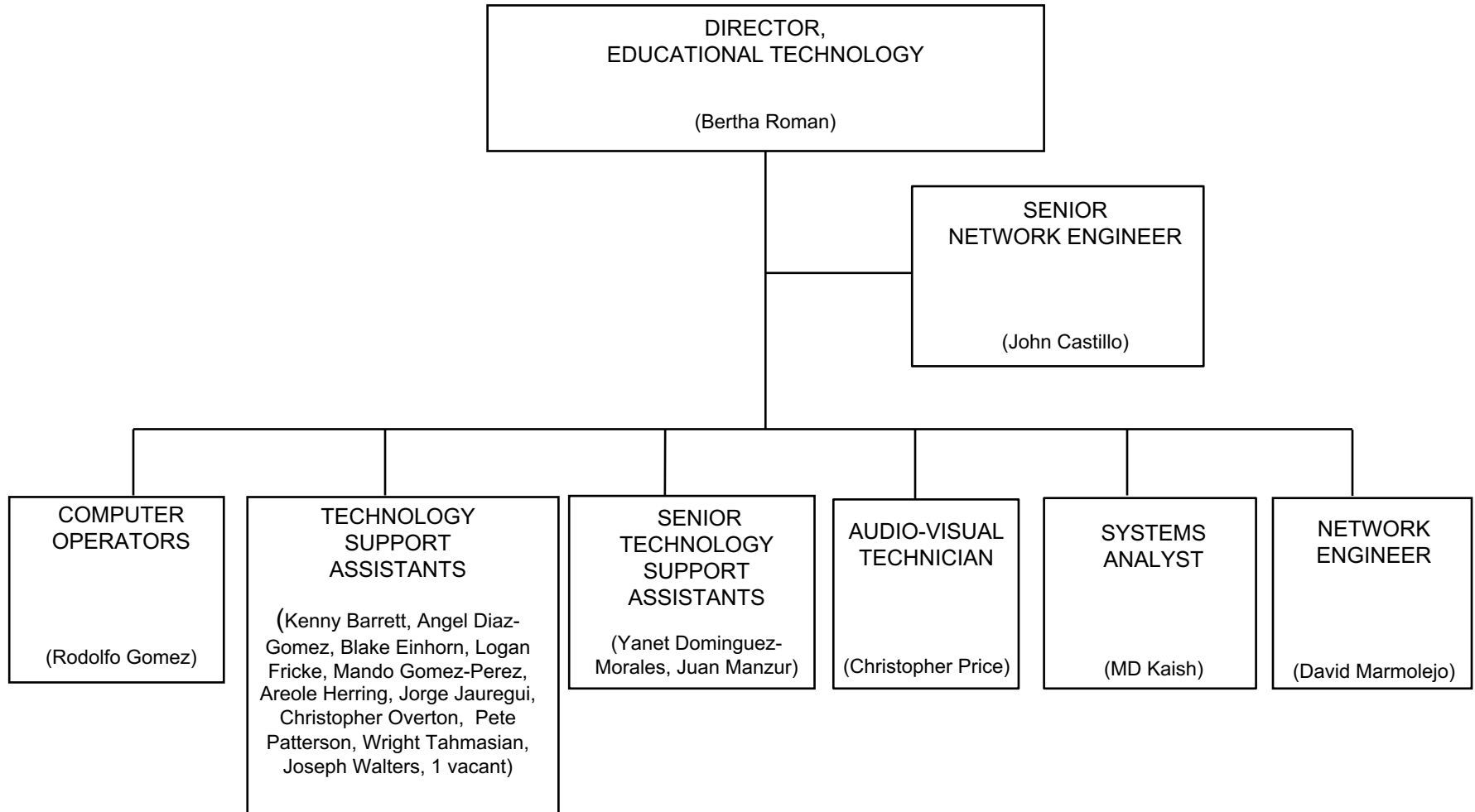


# SPECIAL EDUCATION DEPARTMENT

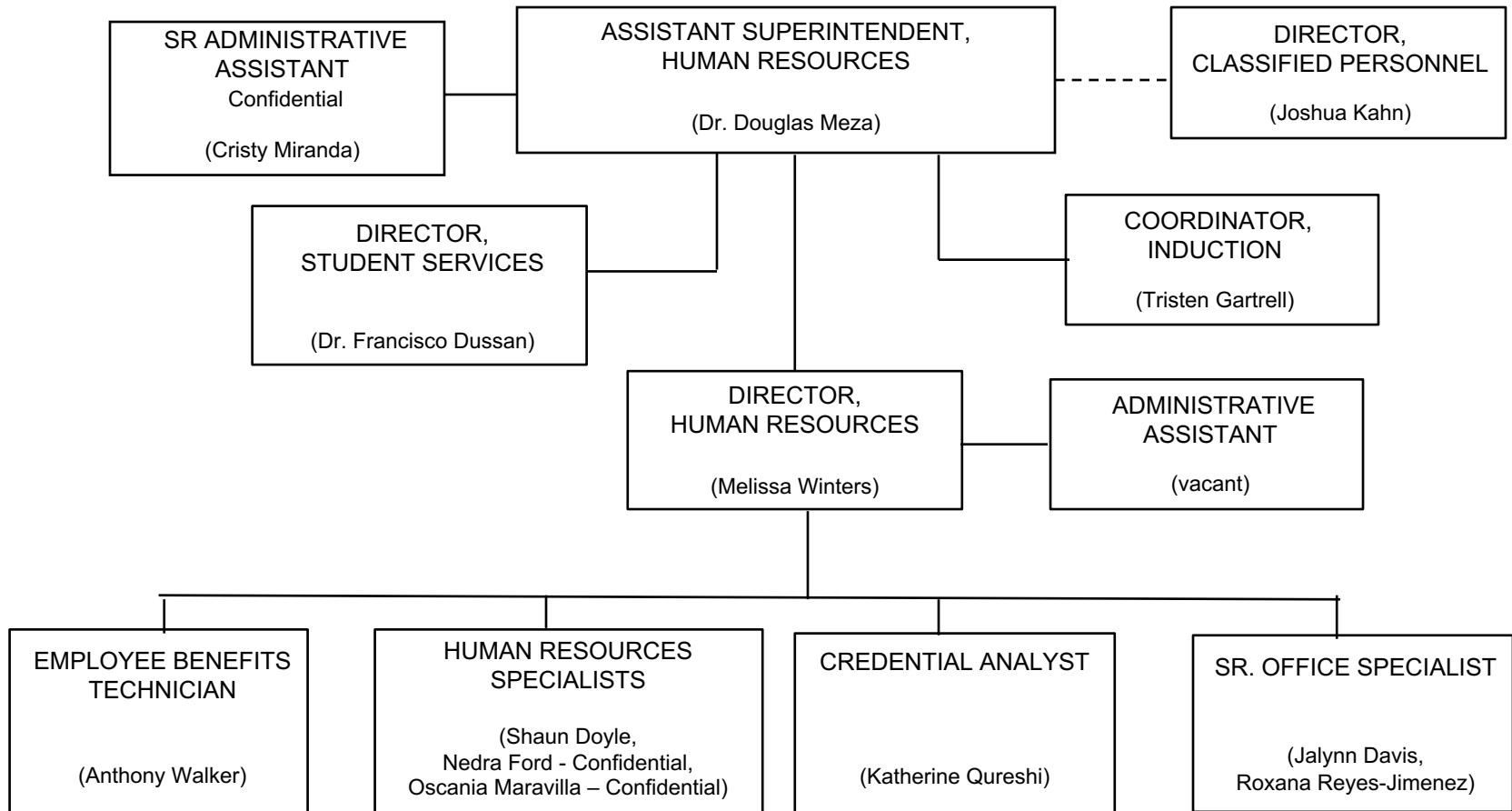




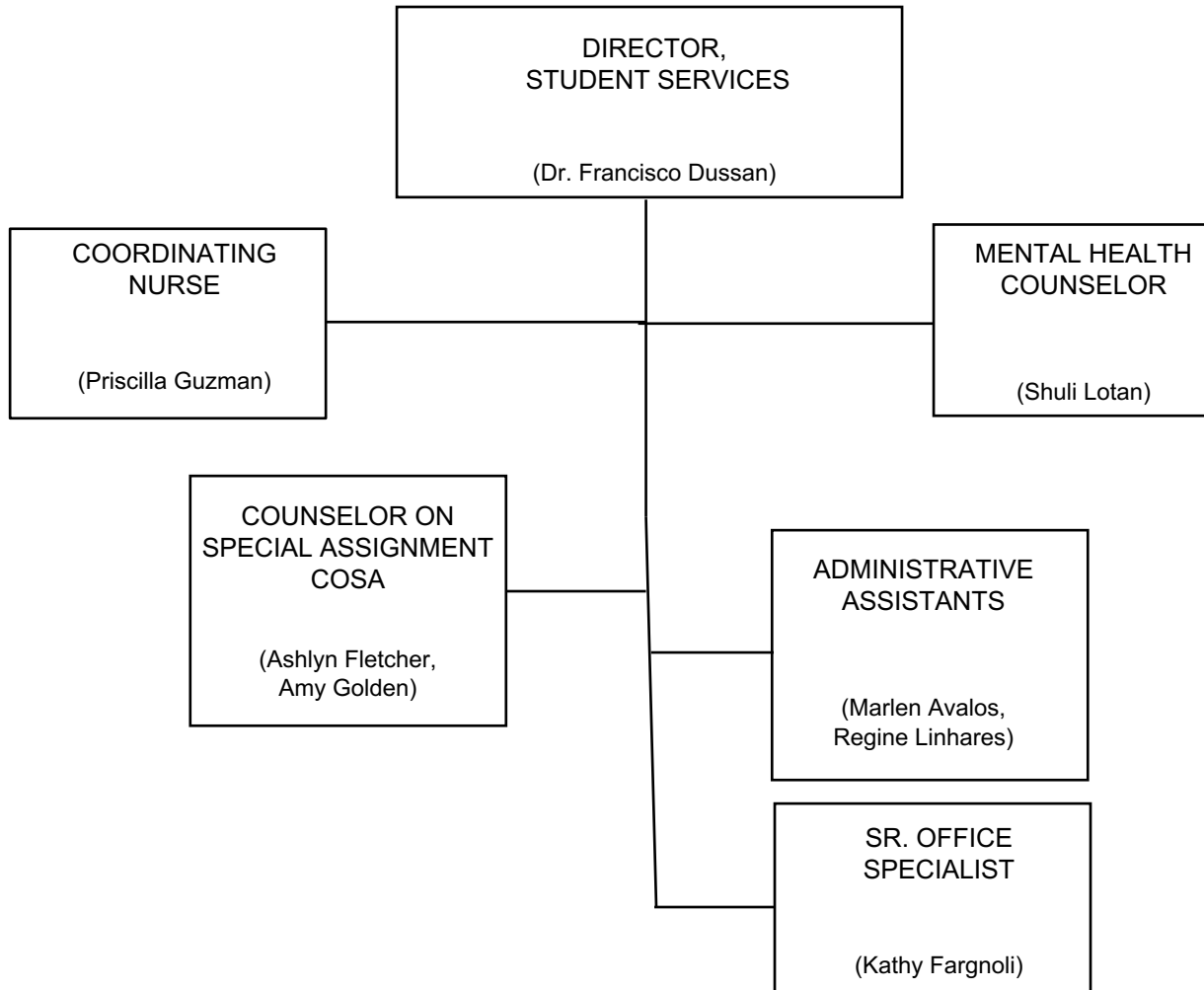
# EDUCATIONAL TECHNOLOGY SERVICES



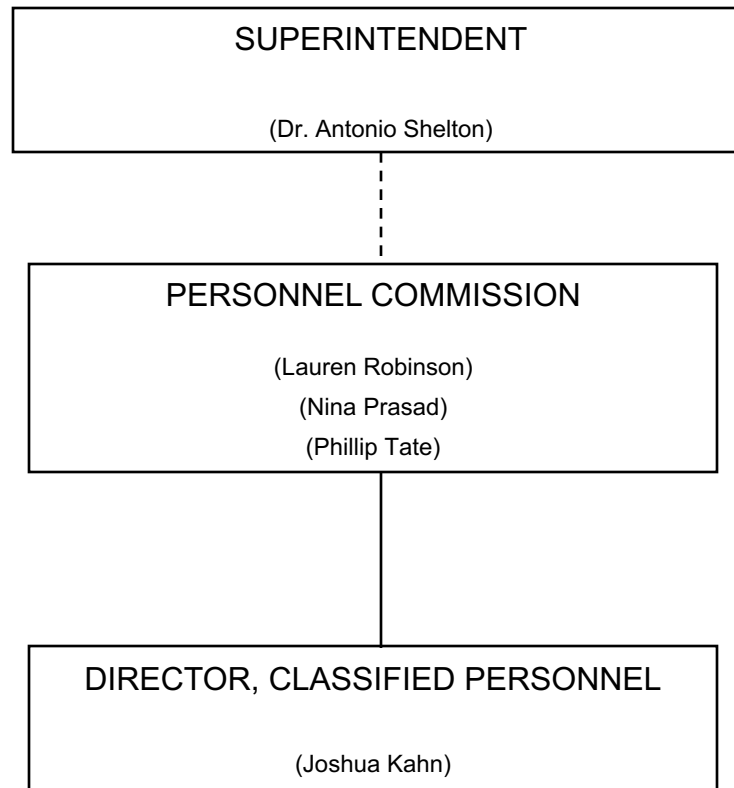
# HUMAN RESOURCES



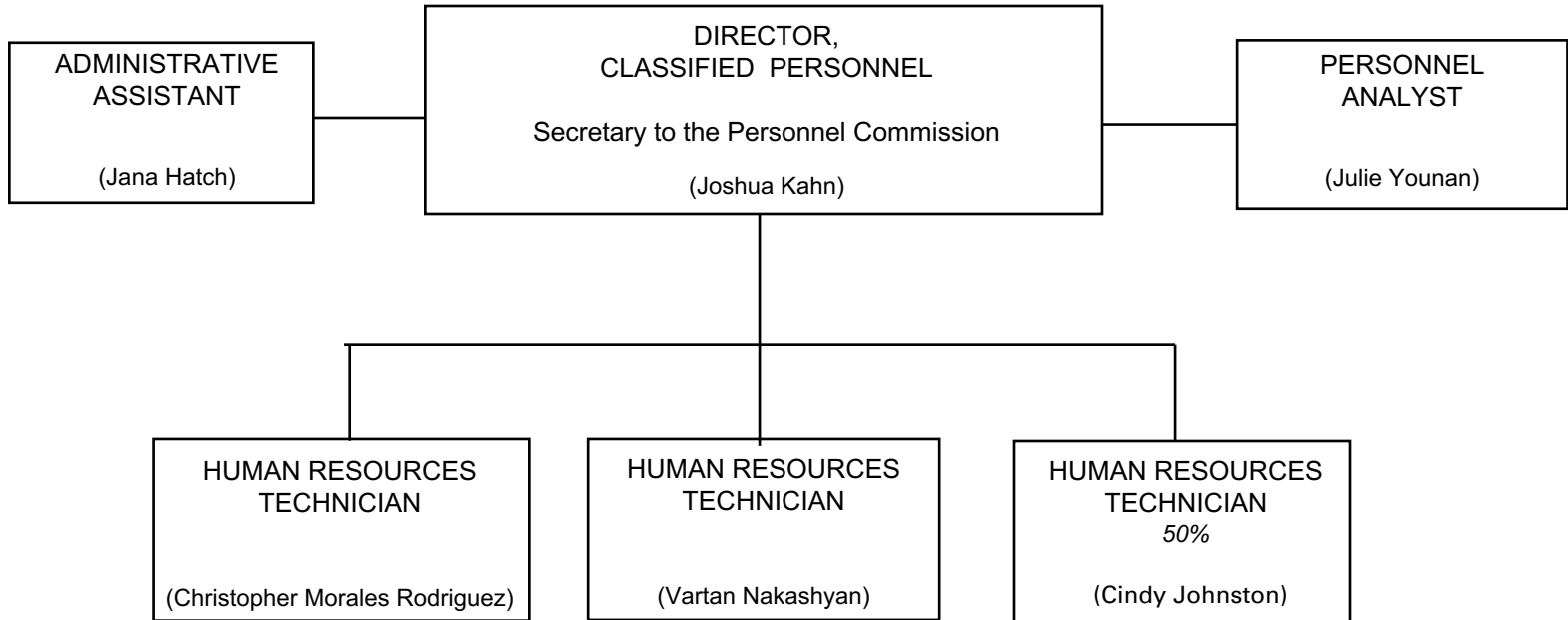
## STUDENT SERVICES DEPARTMENT



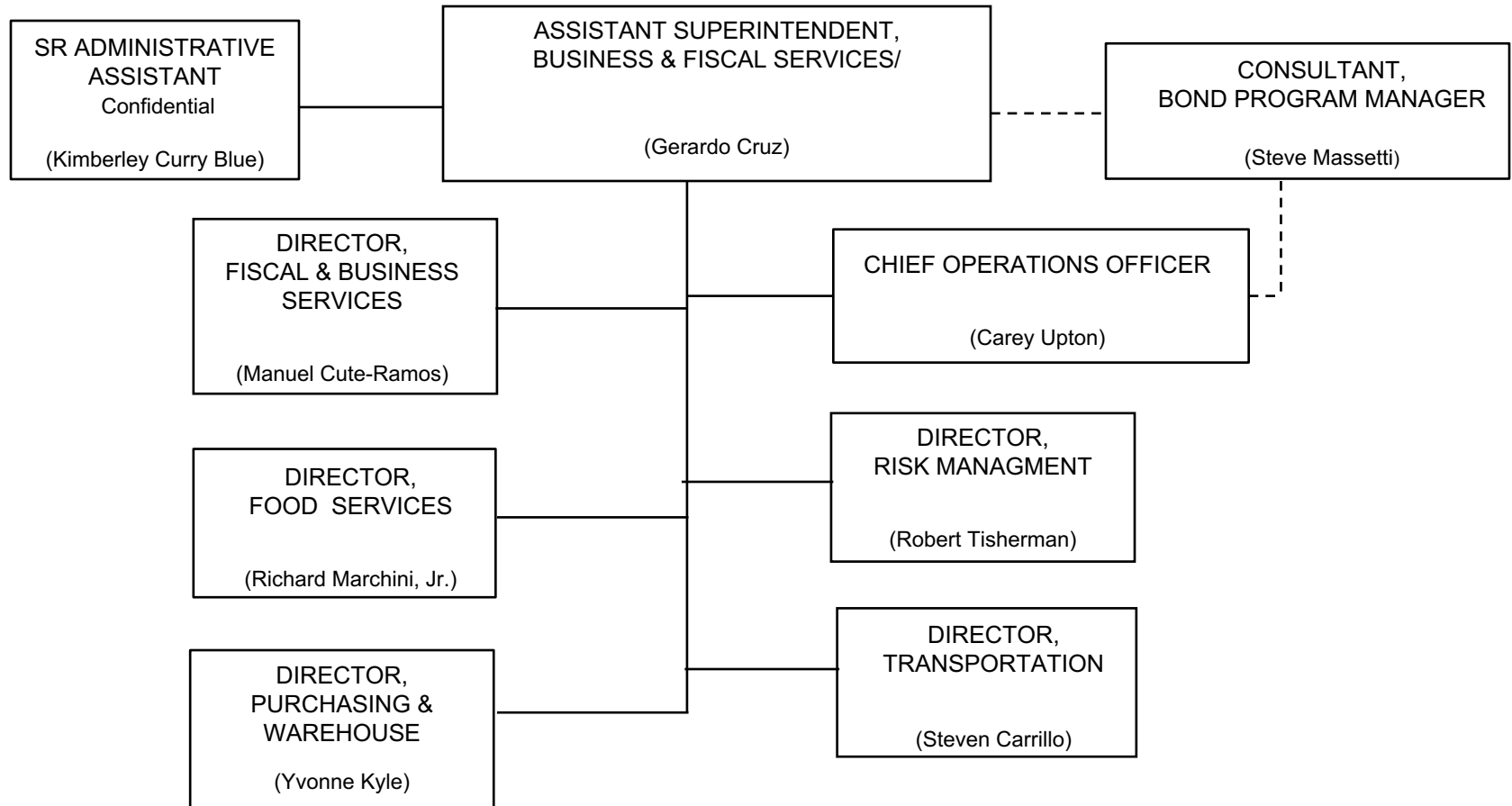
# PERSONNEL COMMISSION



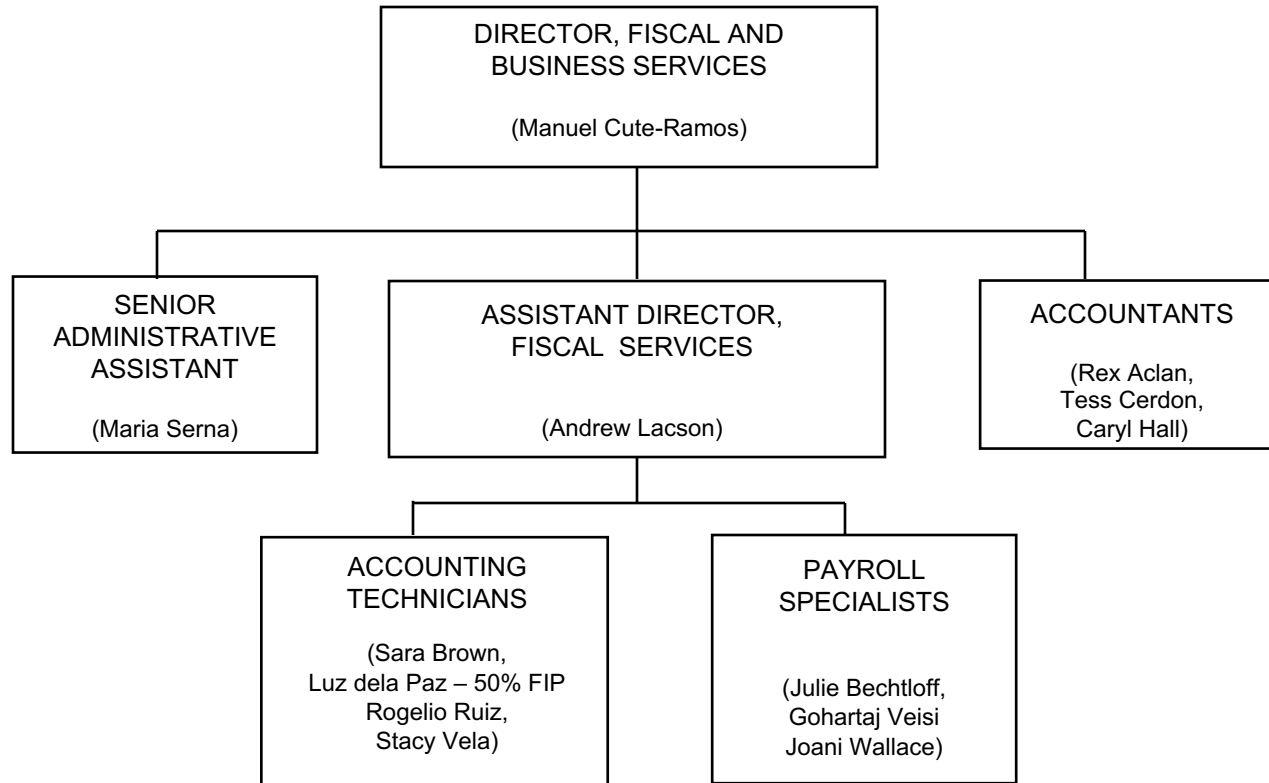
## PERSONNEL COMMISSION



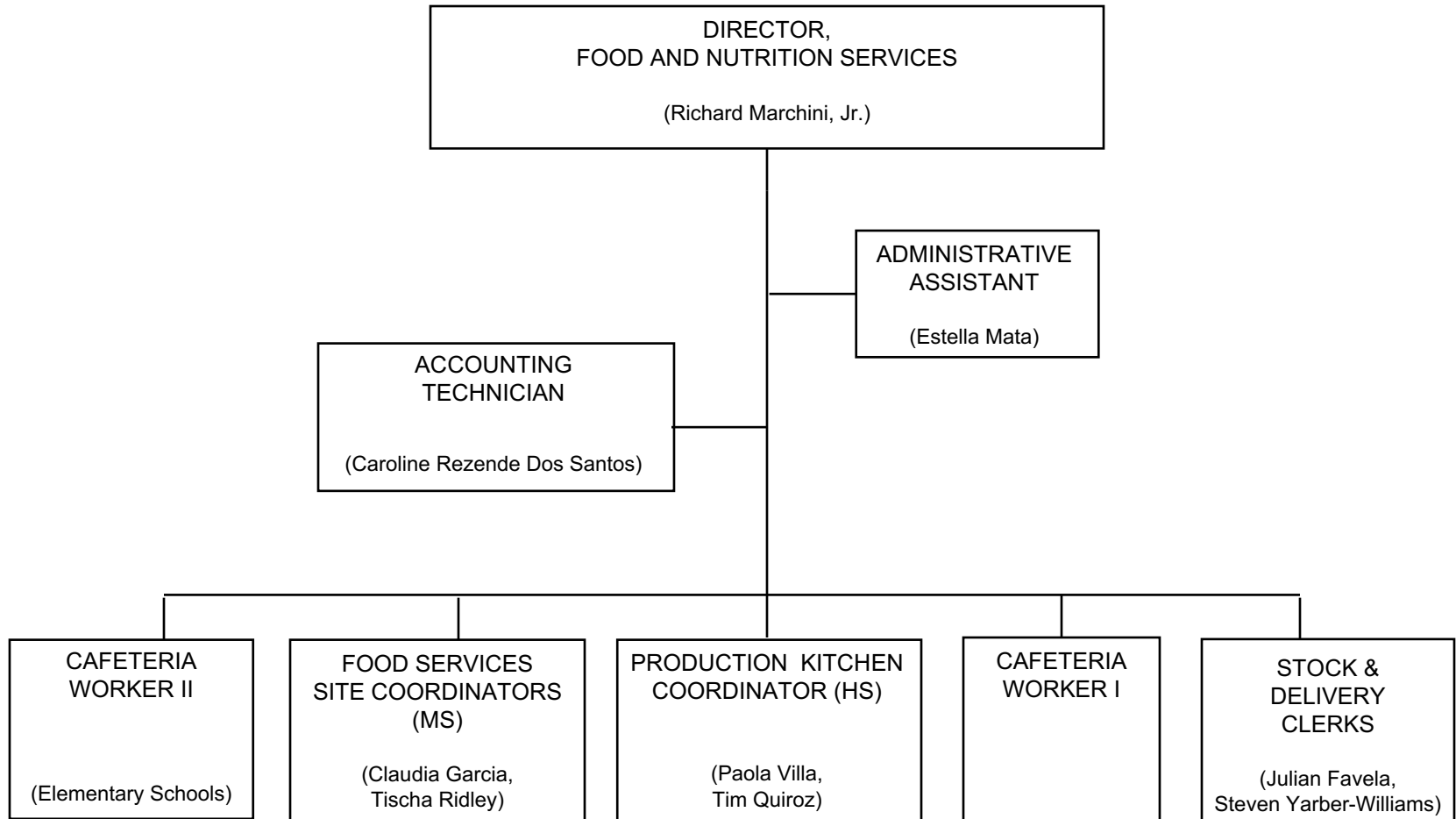
## BUSINESS AND FISCAL SERVICES



## FISCAL AND BUSINESS SERVICES

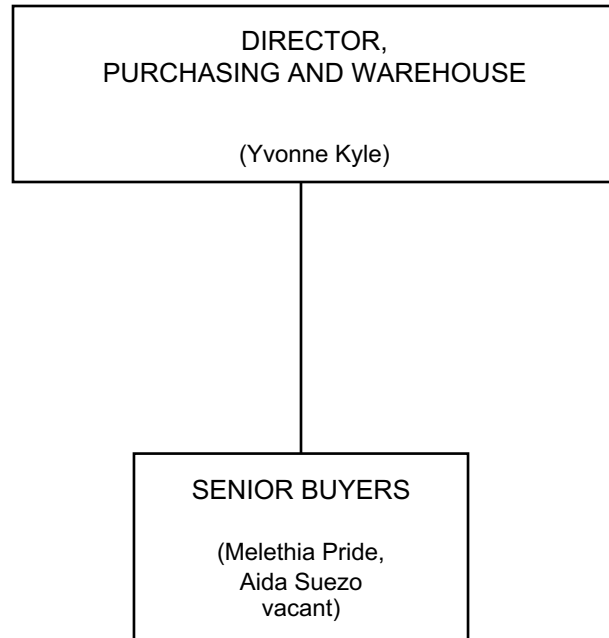


# FOOD AND NUTRITION SERVICES

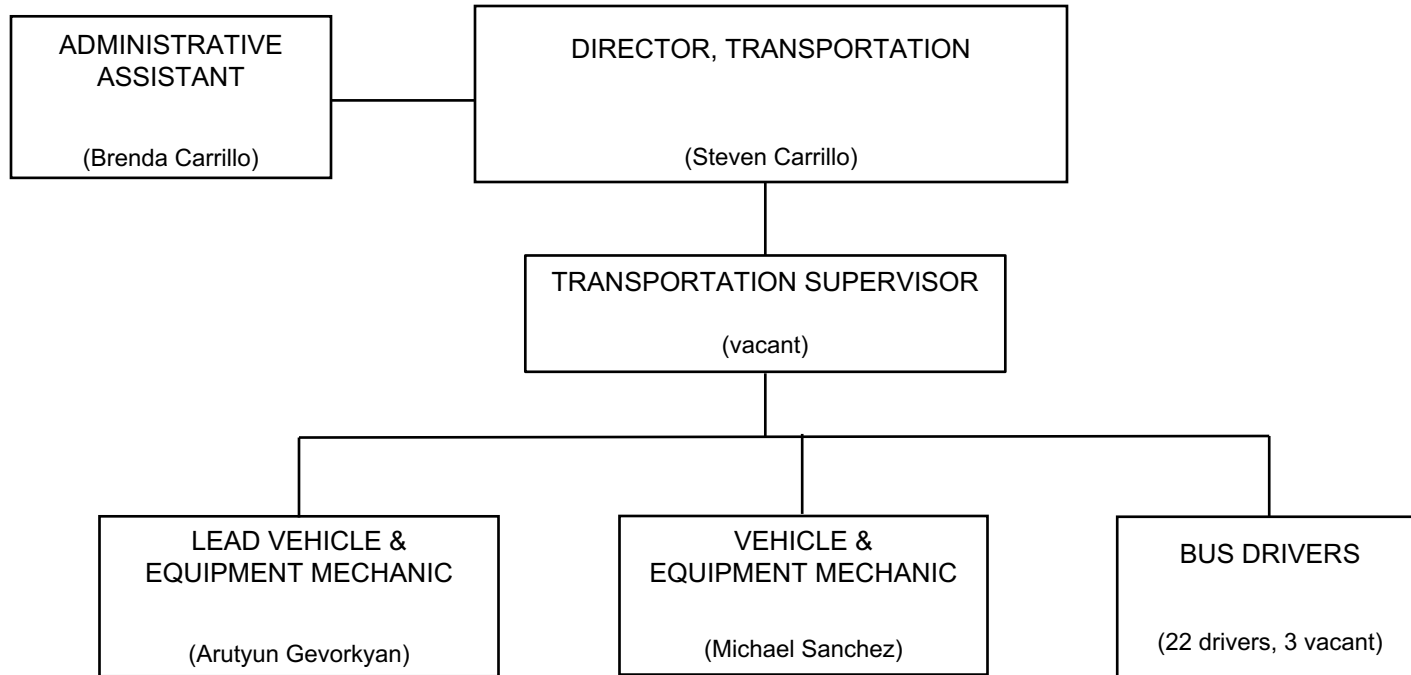




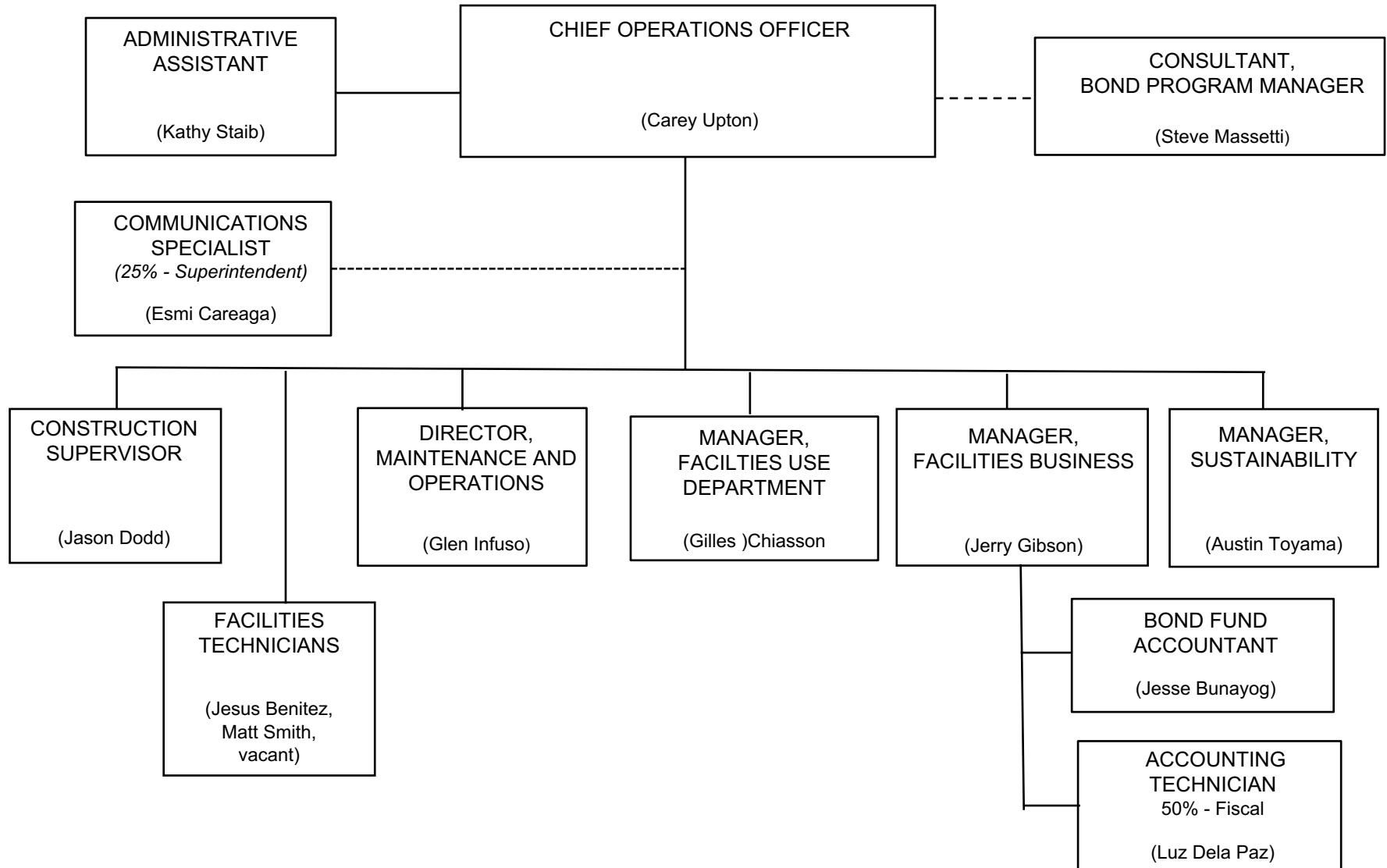
## PURCHASING AND WAREHOUSE



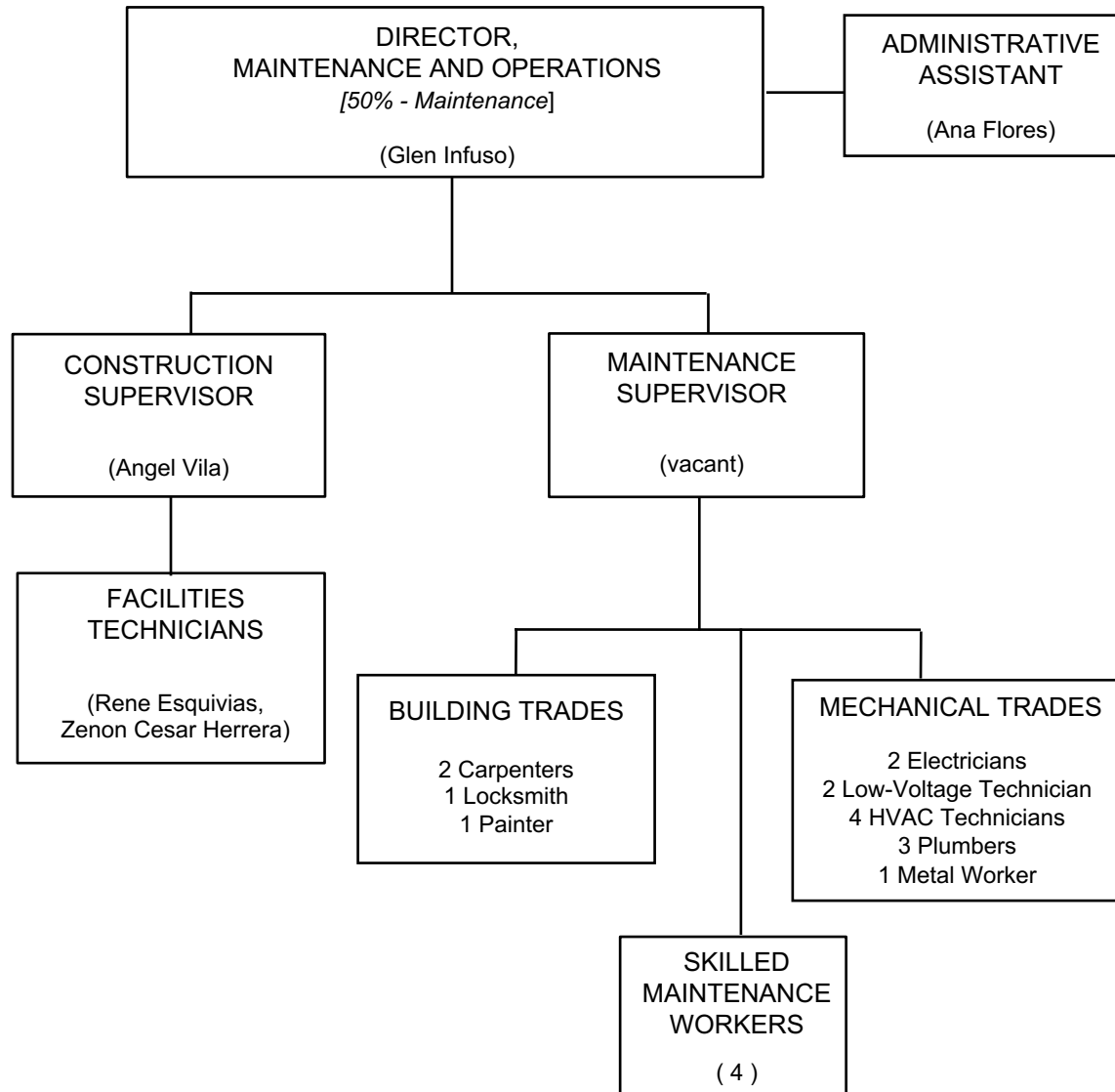
# TRANSPORTATION



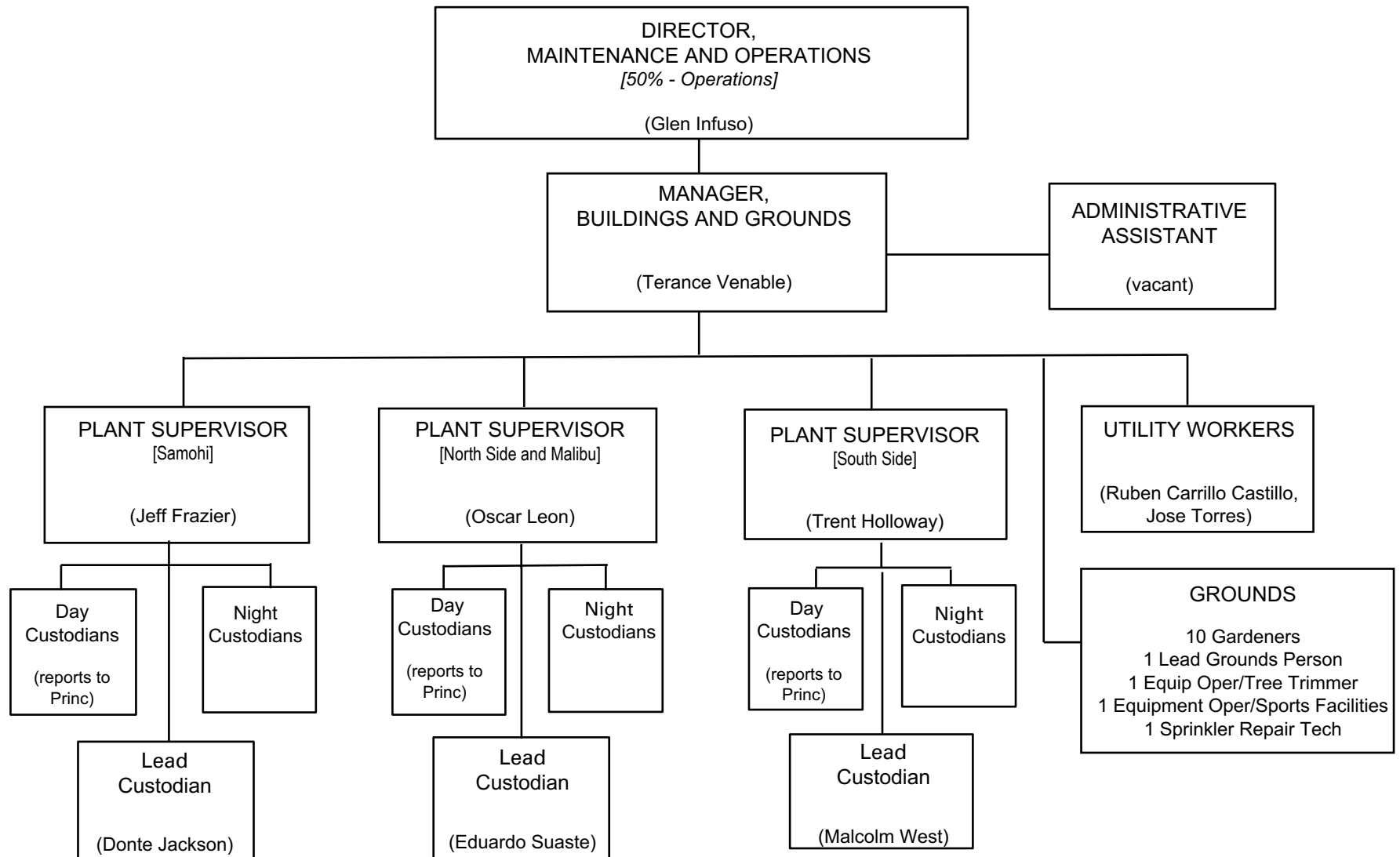
# FACILITY SERVICES DIVISION



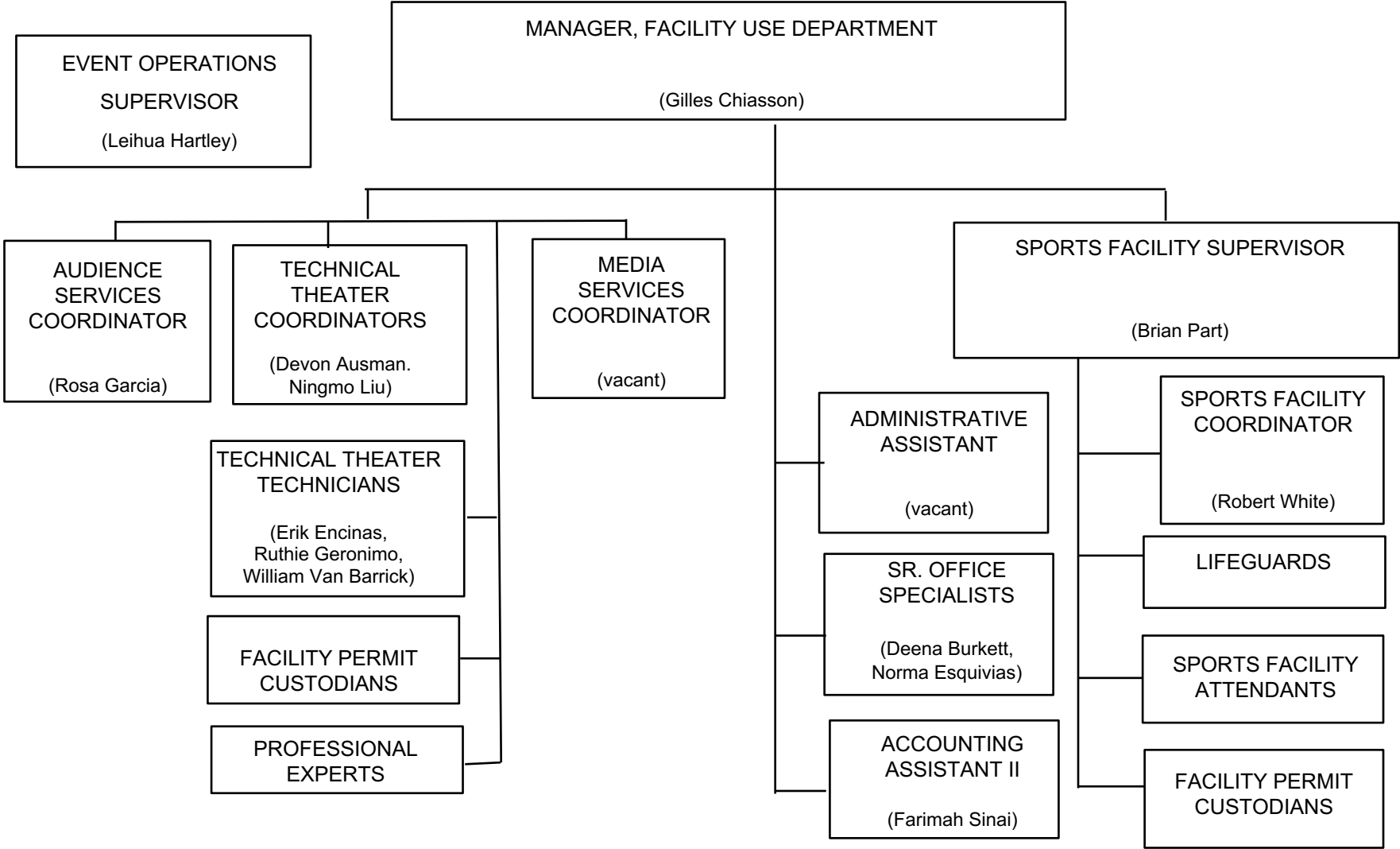
# MAINTENANCE AND CONSTRUCTION



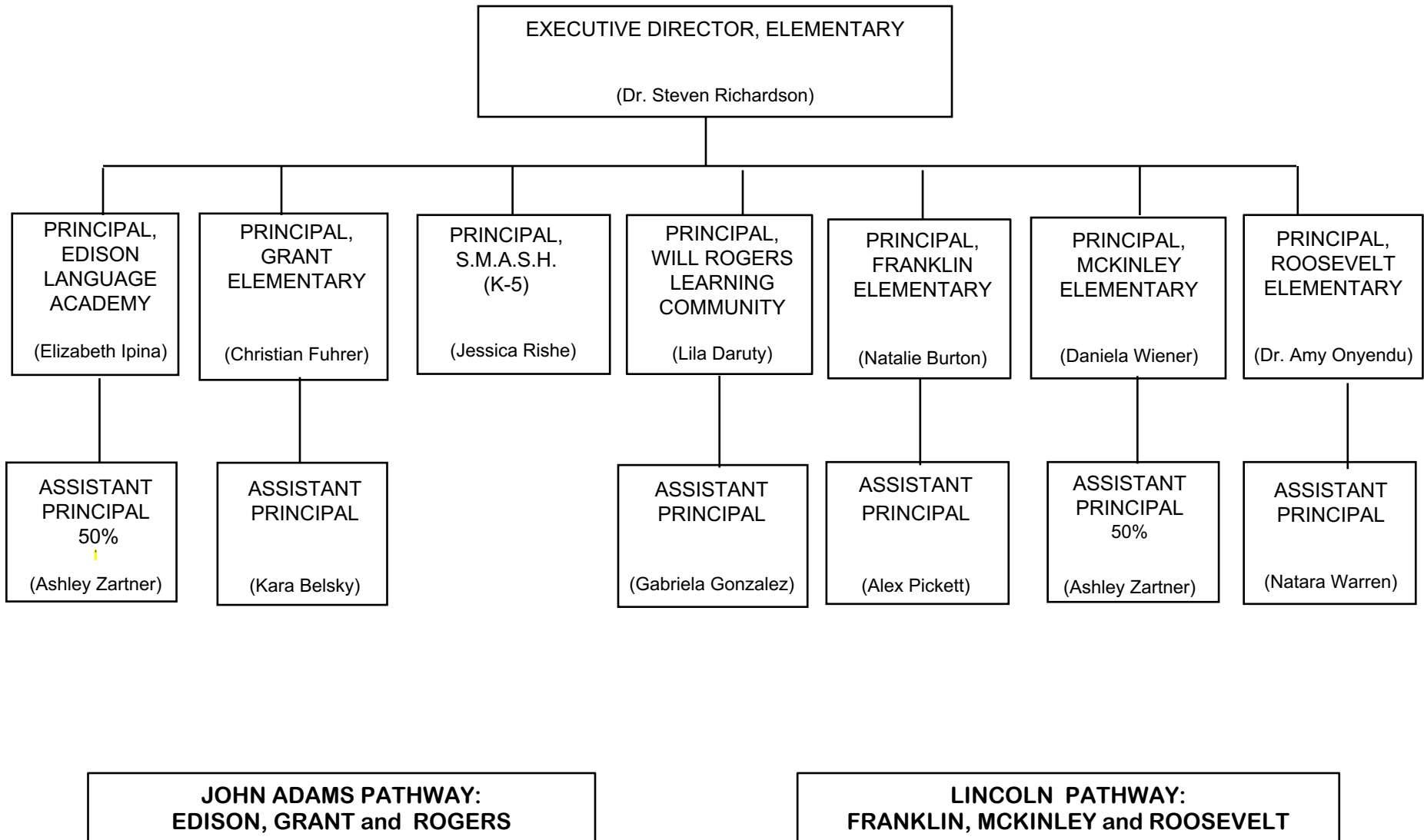
## OPERATIONS: BUILDINGS AND GROUNDS



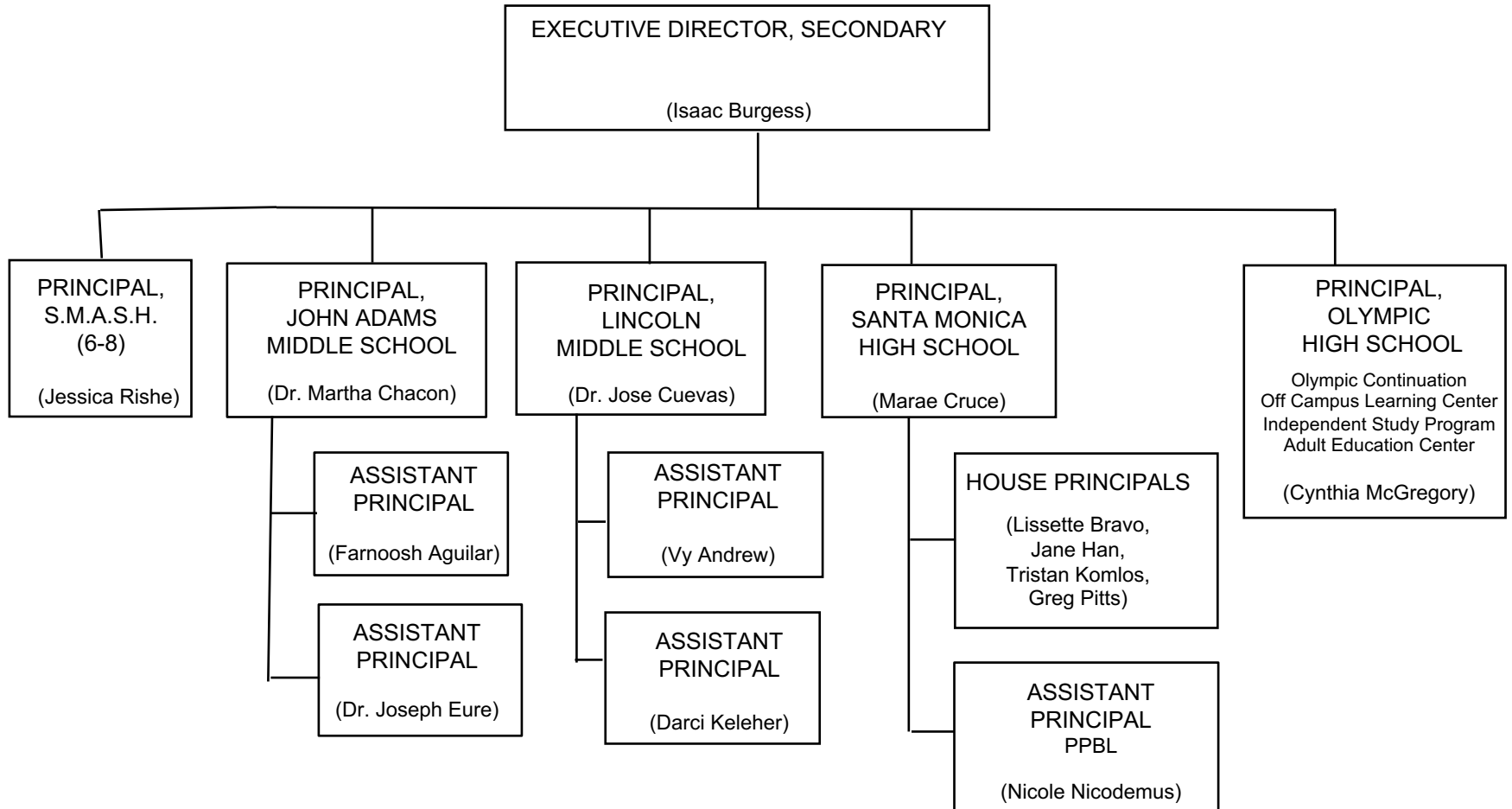
FACILITY USE DEPARTMENT



# ELEMENTARY SCHOOLS



## SECONDARY SCHOOLS





## MALIBU PATHWAY

