

FLANDREAU

FLIERS



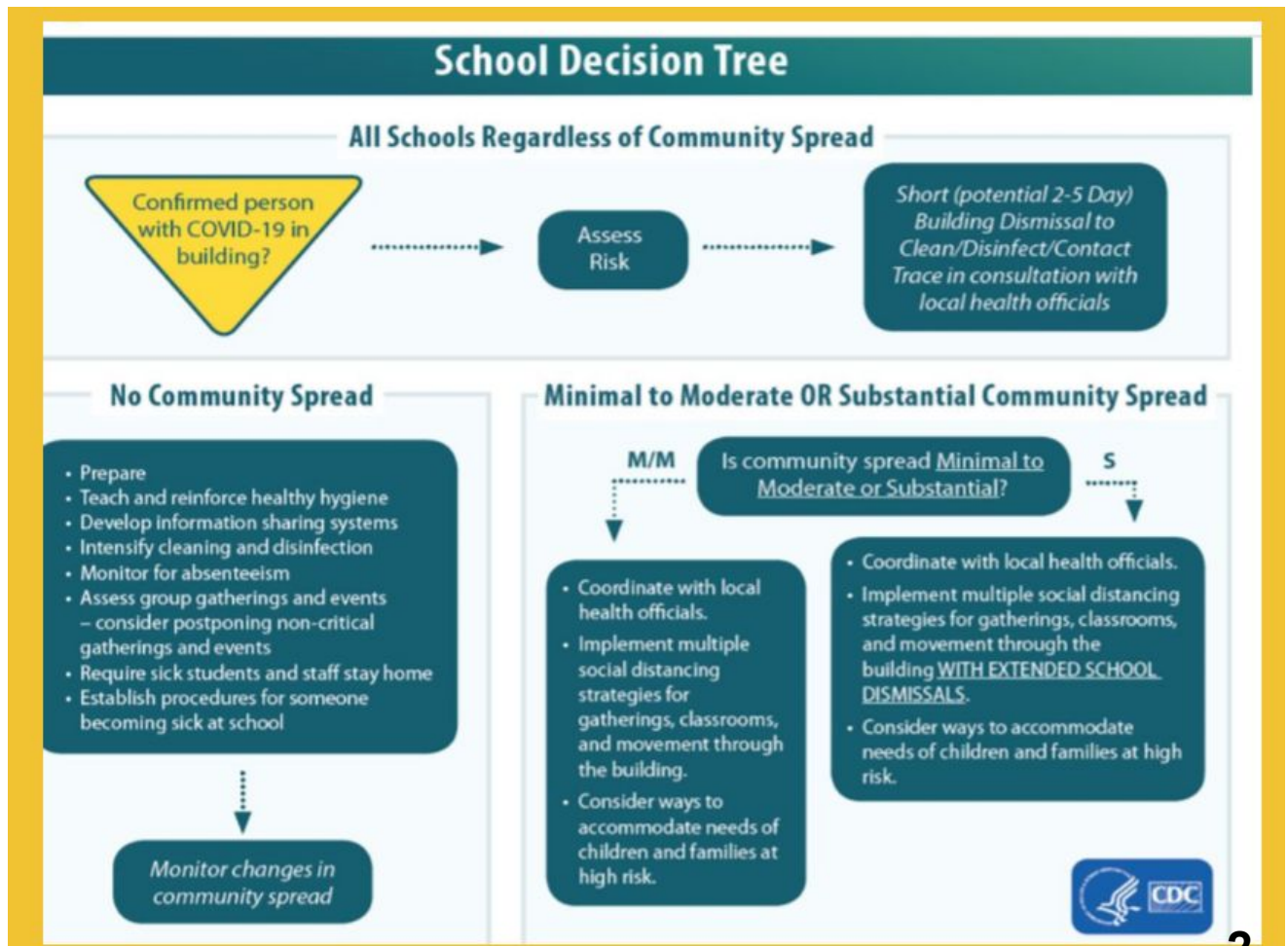
Flandreau Public Schools

*Empowering all students to become learners and leaders in a diverse and dynamic world.*

## Academic Preparation for 2020-2021 School Year

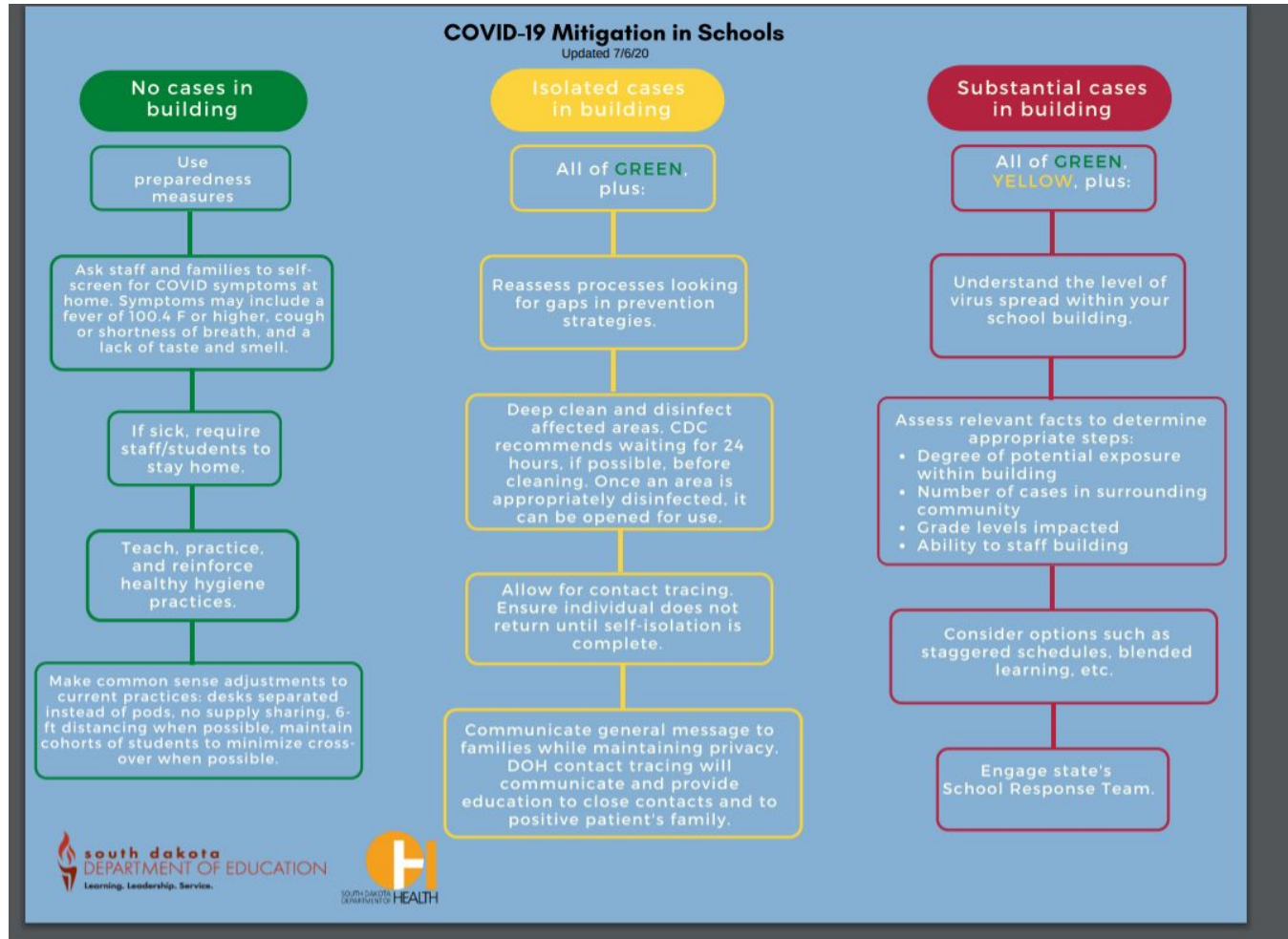
*All information subject to change relative to changes in CDC, SD Dept. of Health, SD Dept. of Education, and American Academy of Pediatrics guidelines.*

# CDC Guidelines for Schools Decision Tree



# SD DOE Starting Well Toolkit

*All information subject to change relative to changes in CDC, SD Dept. of Health, SD Dept. of Education, and American Academy of Pediatrics guidelines.*



# SD DOE Starting Well Toolkit

*All information subject to change relative to changes in CDC, SD Dept. of Health, SD Dept. of Education, and American Academy of Pediatrics guidelines.*

## COVID-19 School Scenarios

Planning for the school year under multiple conditions

Prepared by the South Dakota Department of Health - Revised July 7, 2020



### **Scenario One:** No active cases in your community, and no cases in your school building

The South Dakota Departments of Health and Education recommend that school takes place with appropriate preparedness measures (e.g., requiring students/staff who are sick to stay home; teaching and reinforcing healthy hygiene practices; cleaning and disinfection efforts).

### **Scenario Two:** Active cases in your community, but no cases in your school buildings

The South Dakota Departments of Health and Education recommend that school takes place with appropriate preparedness measures (e.g., requiring students/staff who are sick to stay home; teaching and reinforcing healthy hygiene practices; cleaning and disinfection efforts).

### **Scenario Three:** Student or staff member identified by Department of Health as close contact of a positive COVID-19 case outside of the school community

The South Dakota Departments of Health and Education recommend that school should continue with appropriate preparedness measures in place.

### **Scenario Four:** Active case is identified in one of your school buildings

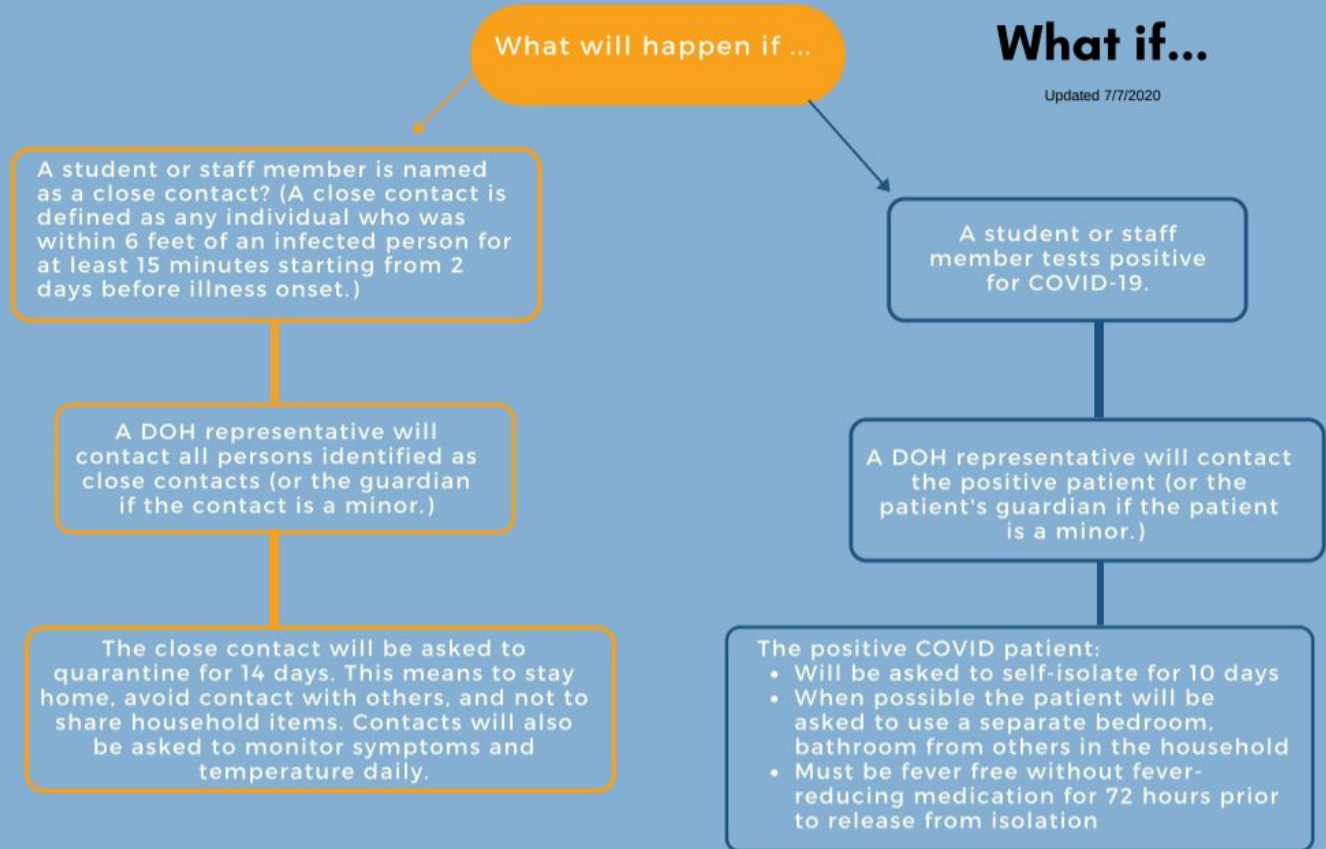
The South Dakota Departments of Health and Education recommend that school officials reassess processes - looking for gaps in prevention strategies. In the short-term, the Centers for Disease Control and Prevention (CDC) recommends closing off areas used by the sick person and waiting 24 hours (if feasible) before cleaning and disinfecting. Once area is appropriately disinfected, it can be opened for use.

### **Scenario Five:** Multiple active cases identified in your buildings at the same time

The South Dakota Departments of Health and Education recommend that school officials review relevant data to understand level of virus spread within the school building and conduct a risk/benefit analysis of factors such as degree of potential exposure within building; case trends in surrounding community; grade levels impacted; remote learning options; scheduling options; ability to staff buildings, etc. in determining the next steps. School leaders can request technical assistance from the DOH/DOE School Response Team if desired.

# SD DOE Starting Well Toolkit

*All information subject to change relative to changes in CDC, SD Dept. of Health, SD Dept. of Education, and American Academy of Pediatrics guidelines.*



# Student and Staff Symptom Screening Checklist



## STUDENT/STAFF SYMPTOM SCREENING CHECKLIST

Parents must complete a daily symptom screening check by answering these

questions before sending their child to school.

Has your child had close contact (within 6 feet for at least 15 minutes) with a confirmed case of COVID-19?	_____ YES	_____ NO
Does your child have new or worsening shortness of breath?	_____ YES	_____ NO
Does your child have new or worsening cough?	_____ YES	_____ NO
Does your child have a fever of 100.4 or greater?	_____ YES	_____ NO
Does your child have chills?	_____ YES	_____ NO
Does your child have diarrhea?	_____ YES	_____ NO
Does your child have unexplained muscle pain?	_____ YES	_____ NO
Does your child have a headache (not related to a known health condition i.e. migraines)?	_____ YES	_____ NO
Does your child have a sore throat?	_____ YES	_____ NO
Does your child have a new loss of taste or smell?	_____ YES	_____ NO
Has your child been vomiting or is experiencing nausea?	_____ YES	_____ NO

*All information subject to change relative to changes in CDC, SD Dept. of Health, SD Dept. of Education, and American Academy of Pediatrics guidelines.*

	If <b>YES</b> to <b>ANY</b> of the questions <b>DO NOT SEND YOUR CHILD TO SCHOOL</b> . Please seek guidance from your medical provider. Contact your school to inform them of your child's symptoms. You may also contact the South Dakota Department of Health at 1-800-592-1861 with questions.
	If <b>NO</b> to <b>ALL</b> questions go to school.

# GREEN PHASE

**A district, school or classroom reopening under the green phase will allow all students and staff to return to five days per week of face-to-face instruction with health and safety precautions following CDC and South Dakota Department of Health Guidelines.**

# Social Distancing and Other Safety Protocols

- All students will be provided a tri-fold, plexiglass desk shield.
- Seating will be assigned for each situation throughout the day.
- Surfaces will be disinfected as needed between sessions.
- Water fountains will be shut down; students will be able to use fountain touchless fill feature for water bottles.
- Children will be spread out as much as possible and given alternative space when needed.
- Masks will be required when students and staff are moving (i.e. in hallways, traveling to lunch, going to the restroom); masks are recommended in the classroom per CDC guidance. Students will be asked to wear masks in situations where social distancing is not possible.
- Non-essential visitors will be restricted: limiting volunteers, parents, presenters, and outside organizations.
- Any visitors will stay in the entryway of the respective building.
- Traffic in the hallway will be recommended to use the right side of the hallway; masks will be required during passing time.
- Parent meetings will be conducted virtually whenever possible.
- Students not allowed in the building prior to 8am unless prior arrangements have been made with teacher/administrator.
- Any food/treats intended to be shared must be pre-packaged (manufactured) and individually wrapped.



## Monitoring Students and Staff

- Encourage daily at-home temperature checks.
- Provide screening checklist to families and staff for at-home health checks.
- Instruct students and staff to stay home if they are sick.
- Students or staff who present with a fever will be asked to return home for observation by a family member. Students and staff may return to school if fever free for 24 hours (without using fever reducing medication) and/or granted clearance from a medical provider.
- Have a 10-day “Stay-At-Home” order for any student or staff testing positive for Covid or medical clearance from a physician.
- Any person returning to school after experiencing a confirmed case of COVID-19 must have a health professional’s (Department of Health or medical provider) acknowledgement that returning to school is safe for both the individual who recovered and others in the building.

## **Cleaning, Sanitizing, and Disinfecting**

- **Consistent cleaning cycle for high frequency areas, door knobs, handrails, desks, restrooms, fountains, etc.**
- **Disinfectant cleaner provided to each classroom to use as needed.**
- **Frequently scheduled hand washing or use of in-classroom hand sanitizer.**
- **Buses to be disinfected twice daily.**
- **Signage to be posted throughout the facilities addressing proper hygiene, social distancing, etc.**
- **Hand sanitizers available when students enter the building and in every classroom.**
- **Students will be directed to use sanitizer upon entering each room.**
- **Students will sanitize desks and seating area prior to leaving the room.**

# Hygiene Education



- Display poster guidance of proper hygiene practices in classrooms, restrooms, and halls.
- Instruct students the first day about proper hygiene practices and reinforce throughout the year.
- Train staff on proper hygiene and cleaning procedures.
- Use school announcements to include training and reminders on hand washing and best practices.
- Provide all students access hand sanitizers when entering district transportation and/or buildings.
- Ensure all students either have their own materials (i.e. computers, calculators, etc.) or shared devices are cleaned between uses.

# Physical Education Classes/ Recess

Middle School/High School:

- **Weather permitting, all physical education classes will be conducted outside and all equipment will be cleaned before/after use.**
- **All activities will be designed and implemented to maintain social distancing guidelines.**
- **Access to locker rooms will be restricted; student access for physical education classes and activities only.**

Elementary School:

- **Weather permitting, all physical education classes will be conducted outside and all equipment will be cleaned before/after use.**
- **All activities will be designed and implemented to maintain social distancing guidelines.**
- **Limit one classroom at the playground at a time.**
- **Playground will be routinely cleaned.**

## Music Education Classes

- **Small group instruction/activities where possible.**
- **Increased focus on music theory/history.**
- **Larger spaces/gym may be utilized to assure social distancing and compliance with CDC guidelines.**
- **Elementary music may be conducted in classrooms.**

## Lunch

- **Limited number of students in lunch area at a time.**
- **Alternative seating to maintain distancing utilized when appropriate.**
- **Limited number of students at a table.**
- **Assigned seating and partitions used at tables.**
- **Masks required until seated.**
- **All serving done by lunch staff; no student contact with food/trays until serving completed.**
- **Additional fruit/vegetable (salad bar) options available in individually packaged servings.**

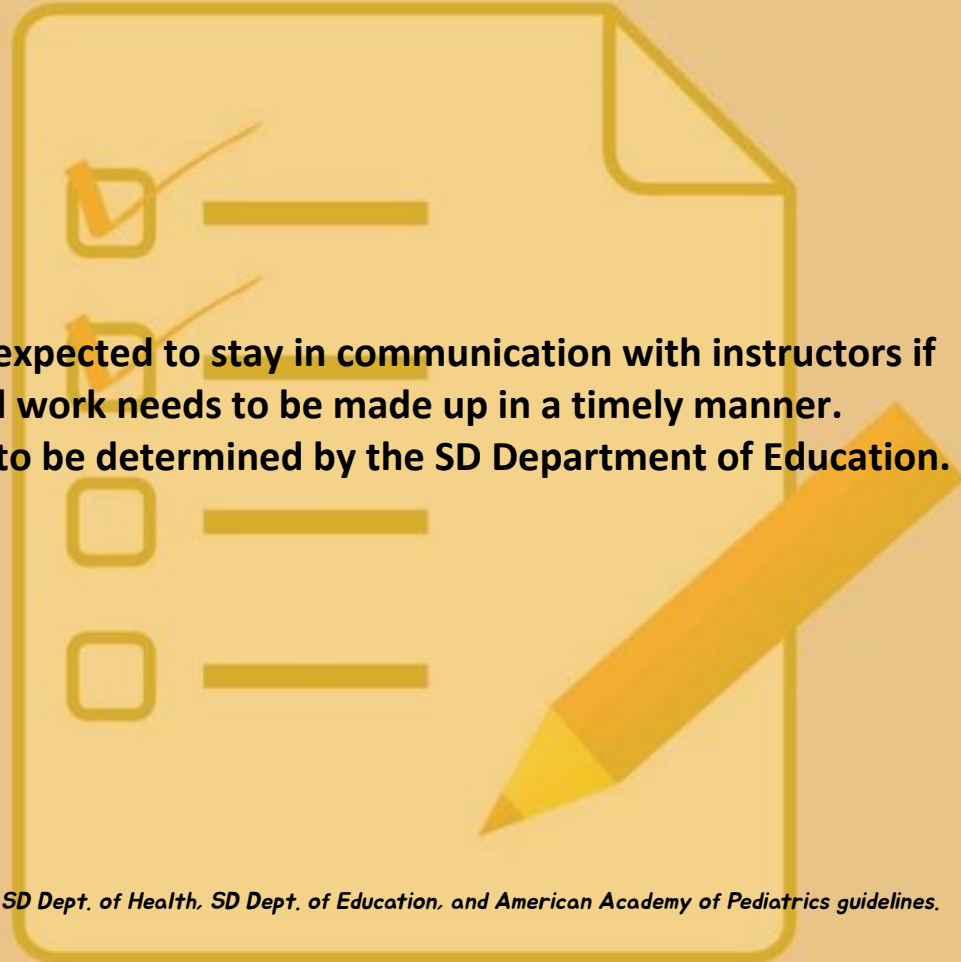
*All information subject to change relative to changes in CDC, SD Dept. of Health, SD Dept. of Education, and American Academy of Pediatrics guidelines.*

# Transportation

- Parents and students will have the option to utilize private transportation if possible.
- Hand sanitizer will be available on the bus; all students will be encouraged to use hand sanitizer when entering school transportation.
- Seating on the bus will be assigned.
- Students are required to wear a mask when using school transportation.
- Students getting picked up by private transportation will go to the proper drop-off/pick-up zone. Parents/family members will stay in their vehicles. Parents may be asked to notify the school if student(s) will be picked up by private transportation.
- Student dismissal will be staggered within and between schools.
- Students will be encourage to enter and exit the building using the nearest appropriate entrance.
- Bus windows may be opened if weather allows.

## Attendance Policies

- **Students and/or parents will be expected to stay in communication with instructors if out for any period of time and all work needs to be made up in a timely manner.**
- **Other attendance specifications to be determined by the SD Department of Education.**





# Protecting Students and Staff at Higher Risk

- **Strongly encourage masks where appropriate for all students and staff while in the school building; require masks when staff and students are moving from place-to-place.**
- **Staff concerns will be addressed on a case-by-case basis.**
- **Unique safety protocols for students with complex needs or other vulnerable populations will be addressed on a case-by-case basis.**
- **Appropriate accommodations will be made to fully support safety and learning.**

## Virtual Learning

- **Virtual school: student is enrolled and provided necessary technology.**
- **Virtual school utilizes an online curriculum set up and provided by the district.**
- **Families can opt to have their children utilize a district-determined, completely online curriculum option that will be provided and approved by the district.**
- **An FPS staff member will be assigned for each student for progress monitoring/support and maintaining connection with the school.**
- **Students will commit to virtual learning for a full semester.**

*All information subject to change relative to changes in CDC, SD Dept. of Health, SD Dept. of Education, and American Academy of Pediatrics guidelines.*



# YELLOW PHASE

**If the district, school or classroom is transitioned to the yellow phase, a hybrid model of instruction will be utilized such as a model where Group A students attending two days per week (Mondays and Tuesdays) and Group B students attending two days (Thursdays and Fridays) with Wednesdays and days not in school utilizing remote learning. This is to allow for greater social distancing.**

**This model will utilize portions of the Green Phase plans along with additional health and safety precautions.**

*All information subject to change relative to changes in CDC, SD Dept. of Health, SD Dept. of Education, and American Academy of Pediatrics guidelines.*

## Hybrid Learning Model

*Specifics to be determined --- potential sample model:*

### Student Groups A and B:

- Group A students attend Mondays and Tuesdays.
- Group B students attend Thursdays and Fridays.
- Wednesdays are cyber days for all students (along with other days not in school).

Teachers could potentially work from home on Wednesdays to deliver and administer lessons. Maintenance would deep clean on Wednesdays, weekends, and evenings.

Schedule adjusted to accommodate weeks with holidays, scheduled absences, etc.

(Potentially allow families some flexibility in coordinating groups to ease child care concerns as much as possible.)



## **YELLOW PHASE Changes**

- **Continued daily cleaning/sanitizing.**
- **No assemblies, presenters, visitors or outside organizations.**
- **Greater social distancing possible during the school day due to half of the number of students being present on any given day.**
- **Any staff or students returning to school after a confirmed case of Covid must have written medical clearance to return.**
- **Masks will be highly recommended for staff and students in the Yellow phase.**
- **Protocols for students with exceptionalities will be addressed on a case-by-case basis and appropriate accommodations will be made to fully support safety and learning.**
- **Greater social distancing on bus due to half of the number of students being present on any given day.**
- **Students required to wear masks while on school transportation.**

# RED PHASE

If a district, school or classroom is transitioned into the red phase, all instruction will be conducted via distance learning.

- Staff and students working remotely
- Transition to distance learning
- Student expected to log/check in according to scheduled times
- Attendance dependant on log in and completion of assigned activities
- Regular communication required; it is expected that parents, students and staff respond to communication attempts in a timely manner.

## Overall Considerations – All Phases

- Handwashing takes a high priority; this will take considerable time but is essential for the health and safety of all.
- Students will wash hands or use hand sanitizer BEFORE going to specials and RETURNING from specials.
- Students will wash hands or use hand sanitizer BEFORE going out for recess and RETURNING from recess (only one classroom out on the playground at a time).
- Students will wash hands or use hand sanitizer BEFORE going to the cafeteria for lunch and RETURNING from the cafeteria.
- Students/staff will be discouraged from shaking hands, hugging, high fives, fist bumps, etc.
- Activities that combine classes or grade levels will be limited.

## Overall Considerations – All Phases

- **Students and staff should use social distancing to the best ability possible.**
- **Desks should be spread out as much as possible and face the same direction if possible.**
- **Sharing of items such as pencils, pens, scissors, calculators will be limited. Any items that are shared should be wiped down between uses.**
- **Changes to instruction may be inevitable to accommodate circumstances.**
- **District will continue to follow CDC, Department of Health, and Department of Education and American Academy of Pediatrics recommendations.**



## School Activities/Athletics

- The district will follow the recommendations of the SDHSAA's suggested protocol for activities/athletics as applicable to district circumstances.

## Resources

- Centers for Disease Control (CDC)- Schools and Childcare Programs: <https://www.cdc.gov/coronavirus/2019-ncov/community/schools-childcare/>
- SD Department of Education - Starting Well 2020: <https://doe.sd.gov/coronavirus/startingwell.aspx>
- SD Department of Health: <https://doh.sd.gov/>
- SD Covid Site: <https://covid.sd.gov/>
- American Academy of Pediatrics: <https://www.aap.org>
- SDHSAA - [Recommendations](#)