

# Saint Paul Public Schools

## Activities to Support Partnerships 2019-20

### Conferences:

Tuesday, October 15	4:00 – 7:00 pm
Thursday, October 24	4:00 – 7:00 pm
Thursday, December 5	4:00 – 7:00 pm
Thursday, March 12	4:00 – 7:00 pm

### Annual Title I Meeting and IZI (*an Intentional Social Interaction including a meal & discussion concerning student & family related issues*)

Thursday, October 10 5:30 – 7:30 pm

### Parent Community Connection (PCC):

Monday, October 21	6:00 – 7:00 pm	1314
Monday, November 18	8:30 – 9:30 am	Office
Monday, January 13	6:00 – 7:00 pm	1314
Monday, March 16	6:00 – 7:00 pm	1314
Monday, April 20	8:30 – 9:30 am	Office
Monday, May 18	6:00 – 7:00 pm	1314

### Parent Academy:

Parent Academy is a program offered at Highland Park Middle School. Specific topics, dates and times will be determined in the fall of 2019.

### Communication at HPMS:

Highland Park Middle School is committed to communicating regularly with families about children's learning. Some of the ways you can expect us to communicate are:

- Scots' Scoop – a weekly e-mail sent to families describing upcoming events
- Schoology, website, e-mails, & phone calls
- SPPS One Stop – families and students can access current grades via parent portal.
- Video announcements will be shared with families

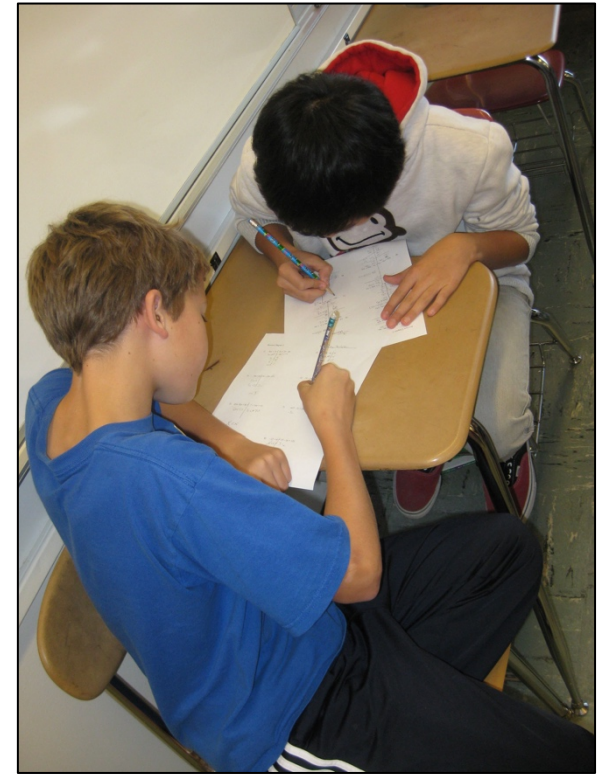
For more information on family engagement activities, please see our website at: [highlandms.spps.org](http://highlandms.spps.org)

## What Is a Family-School Compact?

A Family-School Compact for Achievement is an agreement that parents, students and teachers develop together. It explains how parents and teachers will work together to make sure all students get the individual support they need to reach and exceed grade level standards.

## Jointly Developed with Parents

The parents at Highland Park Middle School helped develop this Compact for Achievement. School wide meetings are held each year to update the compact. Parents are welcome to contribute comments at any time.



## Highland Park Middle School

6<sup>th</sup> – 8<sup>th</sup> Grades  
Focus for Student Success

Charlene Hoff, Principal  
[highlandms.spps.org](http://highlandms.spps.org)  
(651) 293-8950

# Teachers, Parents, Students—Together for Success

## **District Goals**

### **Middle School Model:**

The middle school model centers around a team of teachers and advisors who work together to meet the social-emotional and academic needs of a common group of students.

Teachers from four core subject areas (math, science, reading/writing and social studies) instruct the same group of students throughout the school day.

Teachers, counselors, social workers, and support staff work together to provide students with lessons that help them navigate peer conflict, friendships, bullying, stress and anxiety.

Academics include challenging core and elective courses and college and career readiness programming.

Every student is supported for who they are and who they hope to become by honoring and celebrating their culture, race/ethnicity and gender.

Middle schools will strengthen English Language Arts (ELA) curriculum that expands Writer's Workshop to 6th grade.

Middle school schedules will be adjusted to a seven-period day to allow time for flexible scheduling, electives and a whole class period for the Foundations Advisory class

### **Highland Park Middle School SCIP Goals**

#### **Reading:**

The percentage of all students scoring proficient or higher in Reading will increase from 1% to 57% by Spring 2020 as measured by the MCA Reading III Assessment administered April 2020.

#### **Math:**

The percentage of all students scoring proficient or higher in Math will increase from 1% to 51% by Spring 2020 as measured by the MCA Math III Assessment administered April 2020.

#### **Culture & Climate:**

Increase the number of Reset Room referrals by 33% resulting in a decrease in overall behavior referrals.

To see full details of the SCIP plan, go to <http://scip.spps.org>.

### **In the Middle School:**

The 6<sup>th</sup>, 7<sup>th</sup> and 8<sup>th</sup> grade teams will work with students and their families to support students' success in reading and math. Some of our key connections with families will be:

- Continually update Schoology with upcoming classroom assignments.
- Update SPPS One Stop frequently.
- Provide weekly communication via the Scots' Scoop highlighting academic supports and services.
- Offer PCC Meetings with family learning opportunities targeted at the middle school child.
- Ensure that students who are not proficient have access to support services.
- Provide silent sustained reading time for all students.
- Provide Daily Math Review for all students.
- Provide students with designated writing time.
- Use rubrics to communicate current learning, expectations and guidelines.
- Commit to the Behavior Expectation Chart.

### **At Home:**

Parents join staff to develop ideas about how families can support student success in reading and math. Families may have additional ideas to add to this list.

- Read at home with your child.
- Have fun and explore math at home daily.
- Check SPPS One Stop weekly.
- Try to attend Conferences and PCC meetings.
- Play word games with the new vocabulary words and find ways to use these words in family conversations.
- No technology in their sleeping area.
- Contact the classroom teacher, counselor or family liaison when you have a question or concern.
- Monitor screen time at home.
- Promote positive use of my child's iPad, ensure their iPad is charged daily

## **HIGHLAND PARK MIDDLE SCHOOL STUDENTS**

Highland Park Middle School students joined staff and parents to develop ideas about how they can succeed in school and reach for the stars in math and reading. Students thought of the following ideas to make connections between learning at home and school:

- Talk with my family about new vocabulary words and what I am learning in math.
- Check my Schoology account frequently.
- Ask for help when I do not understand something.
- Sign up for Flipside for added support in math and reading.
- Students will commit to developing characteristics of the MYP Learner Profile.