



REDFISHTM RECYCLING

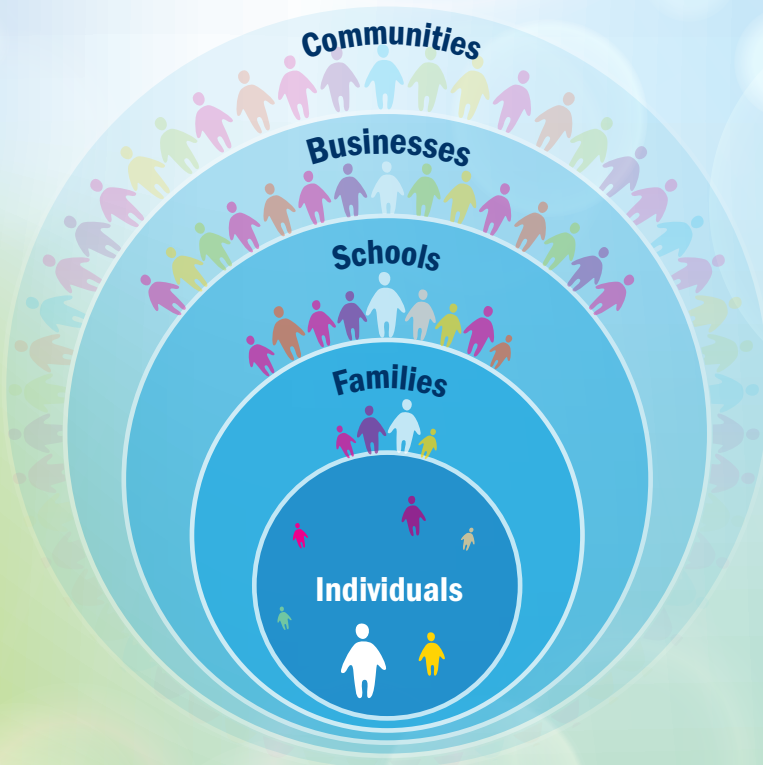
Making Green Simple

What is Recycling?

Recycling allows paper, plastic and metals to be used again.



Who Can Recycle?



Why Should I Recycle?

About **900 tons** of trash go to the Brownsville Landfill each day. Together, we can reduce the amount of trash going to landfills.



How Can I Recycle?

- 1** Collect paper, cardboard, plastic and metal items for recycling
- 2** Place your recycling in any of the recycling bins at school or work
- 3** The recycling from the bins will get put in one of the RedFish Recycling Dumpsters and we'll do the rest



REDFISH RECYCLING

Making Green Simple



What Can I Recycle with RedFish?

Use the chart below to see what items you can and can't recycle with RedFish at this time. If you have any questions, please contact your Recycling Consultant.

✓ Can

Paper and Cardboard

- Newspaper
- Magazines
- Cardboard Boxes
- Mail
- Books
- Paperboard Food Boxes and Cartons



Plastic

- Bottles and Jugs Labeled and
- Containers and Cups Labeled and



Metal

- Aluminum Cans
- Tin Cans



⊘ Can't

Glass

- Glass Bottles
- Glass Jars
- Light Bulbs



Organic Waste

- Food Scraps
- Pet Waste
- Yard Waste



Styrofoam

- Cups
- To-Go Food Containers
- Packaging



Electronics and Batteries

- Cell Phones
- Batteries
- Electronics

