



2017 BOND PROJECTS – BOARD UPDATE

Landrum MS Replacement

Spring Branch Independent School District

Stantec Project No. 214000653

February 28, 2021

1) PROJECT TEAM:

Owner:	Spring Branch ISD	Assoc. Supt. For Operations:	Travis Stanford
SBISD Project No.	67213	Project Manager:	Kris Drosche
Architect:	Stantec Architecture, Inc.	Partner-in-Charge: Project Manager:	Jennifer Henrikson Gary Dunn
CM@Risk:	Durotech		

2) GENERAL SCOPE OF WORK:

Replacement of Landrum Middle School with new 1100 student campus on existing site. Scope includes demolition of existing campus, added drainage detention, construction of new building and associated site work.

Off-Site Transition:

Conceptual studies have revealed on site transition is feasible.

3) BOND PLAN PROJECT TIMELINE:

PROJECT ADVISORY TEAM	JANUARY 2019 – NOVEMBER 2019
CM@R SELECTION	MARCH 2019
CONCEPTUAL SITE STUDY	AUGUST 2018 – DECEMBER 2018
SCHEMATIC DESIGN	JANUARY 2019 – MARCH 2019
DESIGN DEVELOPMENT	MARCH 2019 – MAY 2019
CONSTRUCTION DOCUMENTS	MAY 2019 – AUGUST 2019
PERMIT RECEIVED	MARCH 30, 2020
BIDDING / BOARD APPROVAL	SEPTEMBER 2019 – NOVEMBER 2019
CONSTRUCTION PHASE	DECEMBER 2019 – OCTOBER 2021
OCCUPANCY	JUNE 2021 – AUGUST 2021

← Current Point

4) PROJECT STATUS OVERVIEW

Project is in Construction Phase.



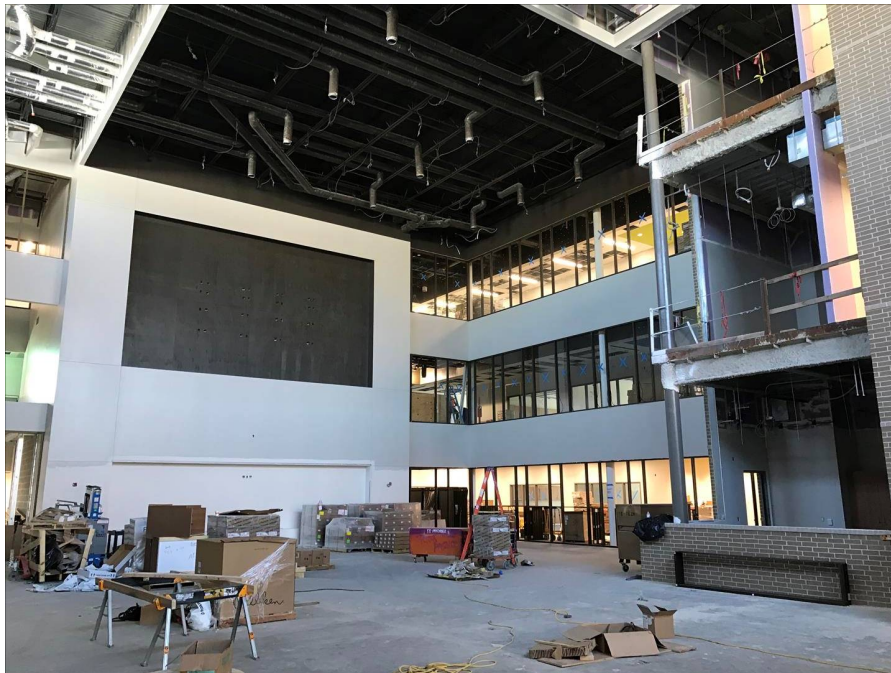
5) PAST 2-4 WEEKS PROJECT HIGHLIGHTS / MILESTONES:

- Terrazzo flooring complete
- Carpet install underway
- Exterior glazing systems predominantly complete
- Interior glazing install ongoing
- Ceiling installs
- MEP and Data Cabling installations ongoing thru out
- Kitchen equipment installation ongoing
- Classroom casework complete Areas A-C
- Building mechanical activated
- Interior wall finishes ongoing

6) NEXT 2-4 WEEKS PROJECT HIGHLIGHTS / MILESTONES:

- Complete Exterior Masonry
- Complete Elevator installs
- Complete Casework installation
- Complete Interior glazing system installation
- Continue Ceiling installations
- Continue Exterior glazing systems
- Continue MEP and Data Cabling installations
- Continue Kitchen Equipment installation
- Continue Interior wall finishes
- Begin install of track

7) PHOTOGRAPHS:



Library interior with interior glazing at flex areas



Ductwork at Dining



Classroom corridor ceiling install ongoing



Stantec

Stantec Architecture Inc.

910 Louisiana St Suite 2600, Houston TX 77002



Science classroom casework



Interior of Gym primed for painting



Completed Terrazzo at Dining



Classroom carpet



Learning Courtyard with sidewalk install underway



Earthwork at Track



Stantec

Stantec Architecture Inc.

910 Louisiana St Suite 2600, Houston TX 77002