



Pittsburgh Public Schools

November 9, 2010



CTE

Elementary/Middle Level (3-8)

Career Education and Work
Standards Integration



Our Mission

- The Pennsylvania Department of Education has mandated career education for ALL students in Pennsylvania public schools.

<http://www.pacareerstandards.com/>



Our Mission

As the CTE Department sought to create a viable tool for integrating CEW standards into classrooms District-wide:

- our superintendent also created a goal to “work with the Board to refine the implementation of the CTE plan to include alignment with PA Career and Work Standards,” and
- the Board of Directors also challenged us to create innovative, non-traditional educational experiences for the District’s children.



Sixteen Career Clusters

Agriculture, Food & Natural Resources

Finance

Architecture & Construction

Education & Training

Arts, AV Technology & Communications

Government & Public Administration

Business Management & Admin.

Health Science

Hospitality & Tourism

Manufacturing

Human Services

Marketing

Information Technology

Science, Tech, Engineering & Mathematics

Law, Public Safety, Corrections & Security

Transportation, Distribution & Logistics

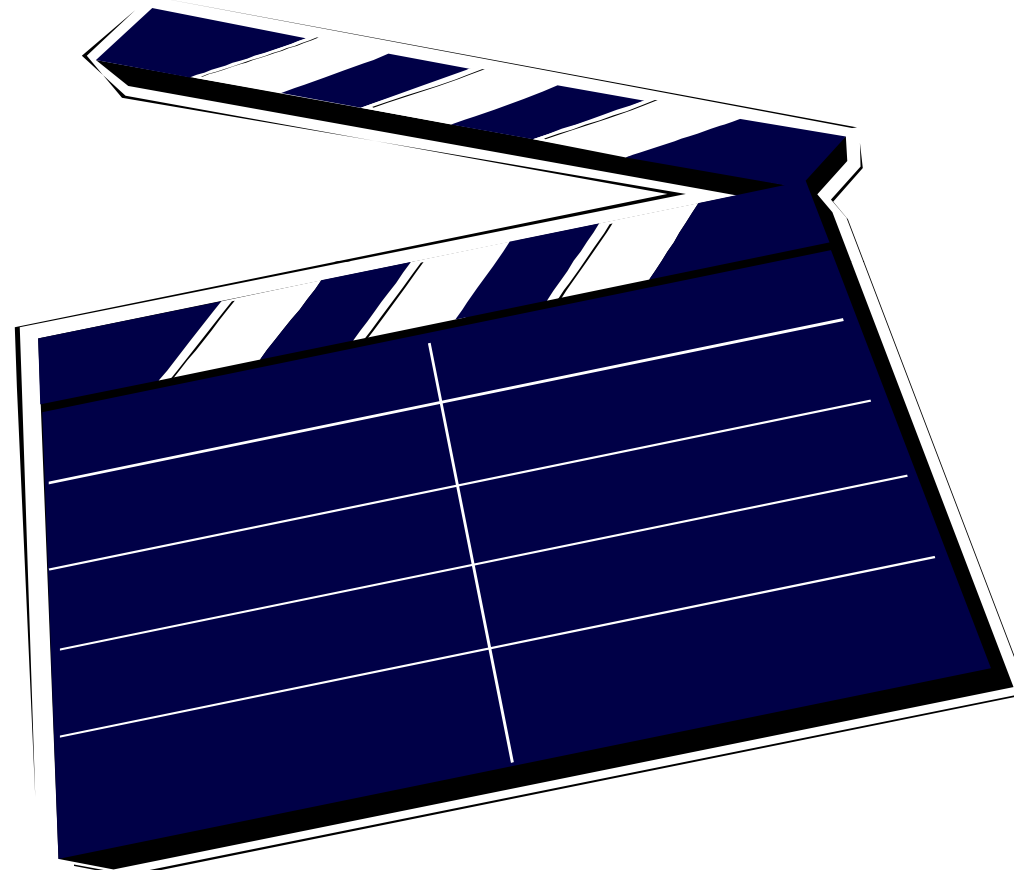


THE PLAN FOR SOMETHING NEW

VIRTUAL TOURS

We began putting together our first “Virtual Tour,” aimed at a middle school audience, as a supplemental tool for helping young people learn more about what it is like to work in a given field.

Our first tour, now complete, focuses on Architecture, Engineering and Construction careers. The second, in progress, focuses on Arts and Entertainment.





Educational Benefits of Field Trips

- They bring an area of study to life.
- They help children make connections.
- They can accommodate different learning styles
- They give you access to resources not available in the classroom or at home.
- They help pull together disparate information.

<http://www.homeschooling-ideas.com/benefits-of-field-trips.html>



Educational Benefits of Field Trips continued...

- **They provide socialization.**
- **They allow for an introduction to a wider variety of role models.**
- **They increase knowledge and understanding of a subject.**
- **They add realism to a topic.**
- **They allow children to display different sides of their personalities.**
- **They create increased motivation and interest in a subject.**
- **They are a way of following a child's interests.**



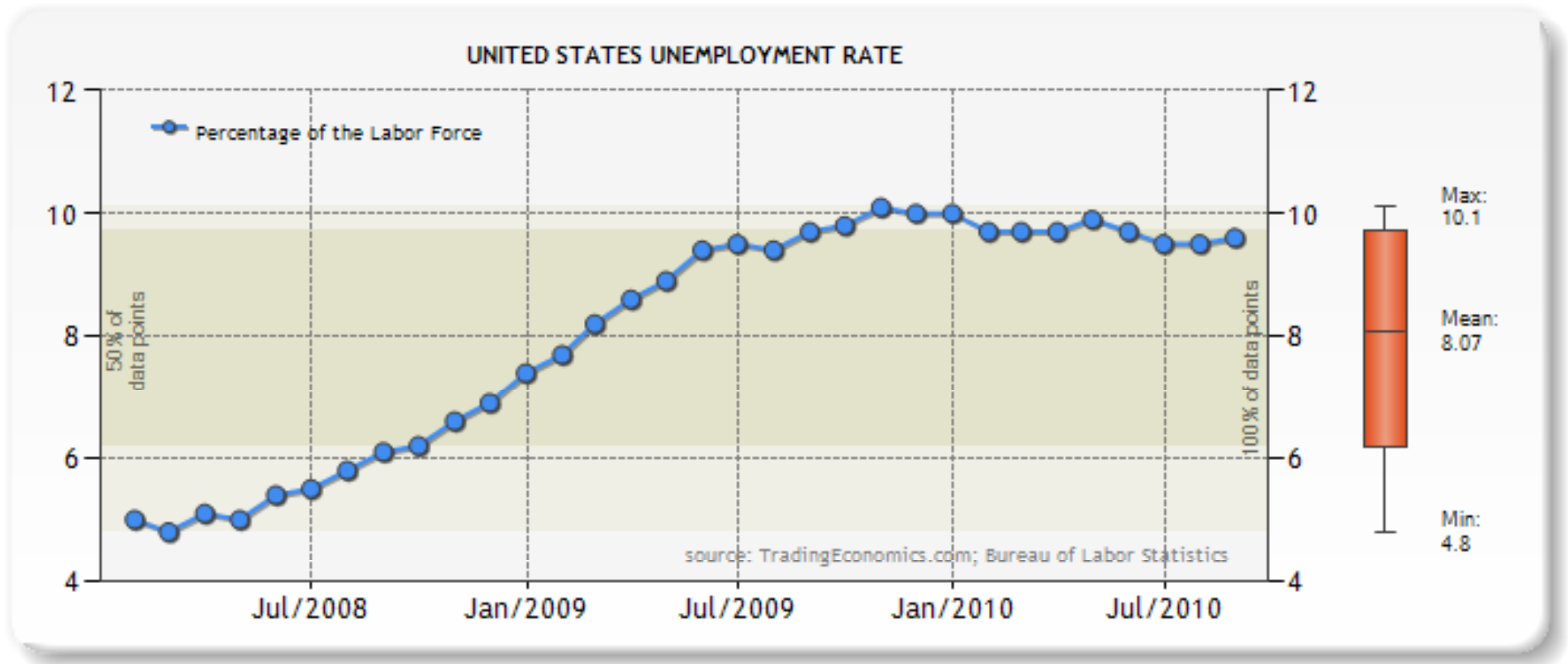
Career Education and Work Standards

Career Awareness and Preparation

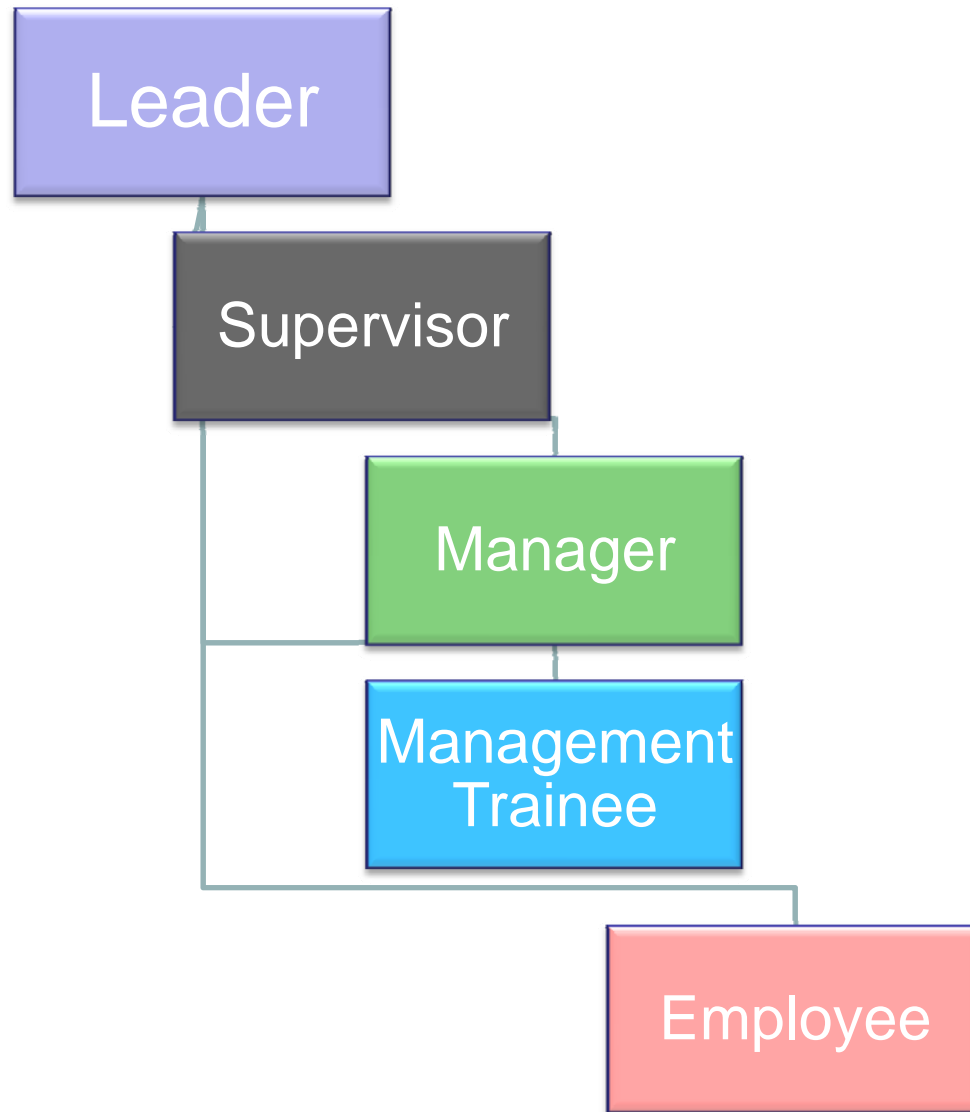


Image from biojobblog.com

Career Acquisition (Getting a Job)



Career Retention and Advancement



Entrepreneurship

2,356

people go into business for themselves every day

78%

of US businesses are entrepreneurial firms

\$951,000,000,000

In receipts have been produced by entrepreneurs



Lessons

The binder for grades 3-8



The Lesson Binder

The binders include 10 lessons for each grade 3-8.

Therefore, the plan is for designated teachers to teach just **one** CEW lesson each month.

Many of the lessons include multimedia, technology, classroom speakers, field trip connections and other unique experiences for students.

Field trips will occur for 4th and 7th graders once this spring, then once per semester, starting for the 2011-2012 school year.



Nine Mile Run



Hard Drive -- 2010



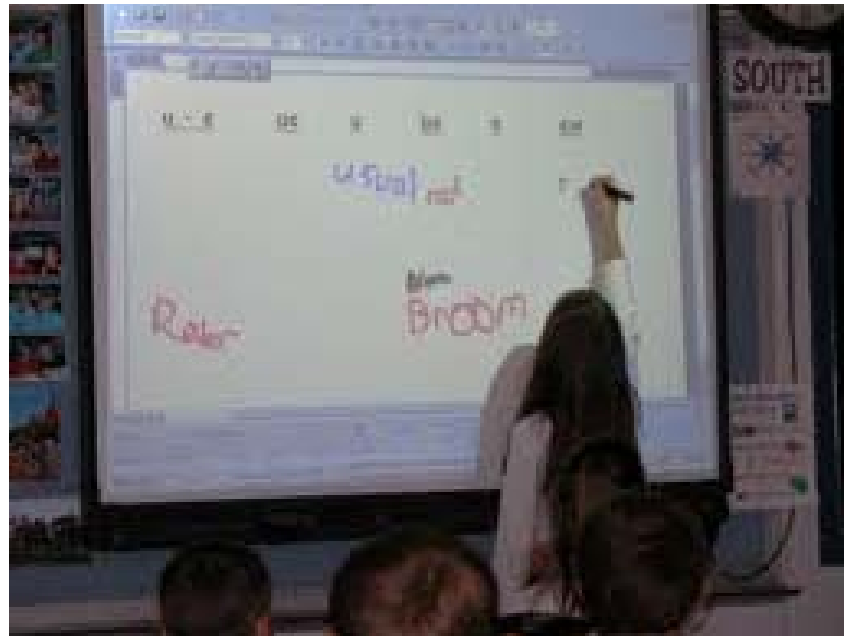
Mechanical Bottle Capper



3-D glasses



MP3 capable phones



Smart Board



Moving Forward...

- One of the most important steps now will be establishing an implementation plan and focusing on accountability for the 3-8 plan.

"I do wish you all the best as you roll your K-12 Career Plan out. I may want to cite your Plan in the near future as a State Model. Your district is putting it together in the spirit and intent of the writers of the CEW Standards. We wanted schools to see the theme of the CEW Standards which is: "Career Development MUST Become Everybody's Business." That means school counselors, administrators, all teachers, parents and community business/agencies. If you want to do the job right, Career Education and Research must become an integrated part of the entire school curriculum and school day." --Mr. Jay Cannon, PDE



January 2011

- Administrative support:
 - Accountability directed from all levels of central and building-level administration
 - CTE inclusion in Teaching and Learning Walks
 - Professional Development time
- Financial support:
 - Field trip fees, bussing costs, etc.
 - Printing
- Ongoing Community support:
 - CTE will continue to build partnerships
 - Field trips and other opportunities continue to be available for PPS students



Moving Forward

- Work with the Summer Dreamers Academy to create experiences for students related to careers
- Work to further develop career exploration plans for middle school students
- Continue 8th grade portfolio as it was initially devised in 2008
- Participate in Imagine Career Week through the Three Rivers Workforce Investment Board

CTE IS MOVING FORWARD...

--Since January of 2009, CTE has had two Integration Teachers in place to address the academic needs in mathematics and English of students directly in their CTE classrooms. This work continues with two new instructors in these roles who have evaluated data to determine educational value of their ongoing lessons.

--Also ongoing are the monthly CTE departmental professional development sessions offered to program, elective and middle school teachers associated with CTE. Topics have included and will include: instructional technology, integrating Graduation Projects into CTE coursework, Career Counselor services and critical testing information.

GEM

- The White House announced the awarding of \$2.4 Million in Grants to help Girls in Math and Science through the *Women's Educational Equity Act (WEEA)*
- Pittsburgh Public Schools is one of only FOUR school districts in the nation to receive the WEEA grant
- The PPS Program Gaining Equity through Mathematics (GEM) began last school year with a Kick-Off Event in March





Moving Forward...

CTE has also recently:

- participated in the Magnet Fair
- launched a brand-new marketing campaign
- begun a middle school recruitment program
- reconfigured the application process for CTE programs to align with the magnet format
- been included in the 2011-2012 Offerings and Options Guide
- created a new CTE lesson plan template
- developed a CTE RISE informal observation tool
- redesigned program curricula
- CTE ITL professional development
- disaggregated CTE PSSA data to drive future instruction
- worked directly with PDE to move forward with elementary and middle level CEW integration

Coming soon...

- A revision of CTE electives to include only rigorous choices with fully updated curricula
- A K-2 career education plan for the District
- The launch of the 3-8 CEW plan throughout the District
- The inclusion of CTE in Promise Nights to discuss technical school options for students

CTE – Grades 3-8 CEW Integration

QUESTIONS?