

Burnsville School Wellness Policy 2022-2023



Rationale:

The link between health of students and learning is well documented. If children are to be successful in school they cannot be tired, hungry, sick, suffering from drug abuse, or worried that school is an unsafe environment in which they could become a victim of a violent act. It has become apparent that problems such as poor nutrition, lack of physical activity, substance abuse, depression, teen pregnancy, obesity, bullying, and more – can adversely affect not only a child’s health, but also his or her *ability to learn!* And that is precisely why a coordinated approach to school health can make a difference! A coordinated approach to school health improves kids’ health and their capacity to learn through the support of families, schools, and communities working together. At its very core, a coordinated approach to school health is about keeping students healthy over time, reinforcing positive healthy behaviors throughout the school day, and making it clear that *good health and learning go hand in hand.*

Goal:

All students in Burnsville School shall possess the knowledge and skills necessary to make healthy choices that promote healthy lifestyles. All staff in Burnsville School are encouraged to model healthful eating and physical activity as a valuable part of daily life.

To meet this goal, Burnsville School adopts this school wellness policy with the following commitments to implementing a coordinated approach to school health. This policy is designed to effectively utilize school and community resources and to justifiably serve the needs and interests of all students and staff, taking into consideration differences in culture.

Commitment to Nutrition

Burnsville School will:

- Offer a school lunch program with menus that meet the meal patterns and nutrition standards established by the U.S. Department of Agriculture (USDA) and the Mississippi Department of Education, Office of Child Nutrition Programs.
 - Offer school breakfast and snack programs (where approved and applicable) with menus that meet the meal patterns and nutrition standards established by the USDA and the Mississippi Department of Education, Office of Child Nutrition Programs.
 - Promote participation in school meal programs to families and staff.
 - Operate all Child Nutrition Programs with school foodservice staff who are properly qualified according to current professional standards (Mississippi Board of Education Policy, Code 2001).
 - Follow State Board of Education policies on competitive foods and extra food sales (Mississippi Board of Education Policy, Code 2002).
 - Include goals for nutrition promotion, nutrition education, physical activity and other school-based activities to promote student wellness.
 - Implement Nutrition Standards as adopted by the State Board of Education in accordance with the Mississippi Healthy Students Act (State Board of Education Policy 4011),
 - Healthy food and beverage choices;
 - Healthy food preparation;
 - Marketing of healthy food choices to students, staff and parents;
 - Food preparation ingredients and products;
 - Minimum/maximum time allotted for students and staff lunch and breakfast;
 - Availability of food items during the lunch and breakfast periods of the Child Nutrition Breakfast and Lunch Programs;
 - Methods to increase participation in the Child Nutrition School Breakfast and Lunch Programs.
 - Establish guidelines in accordance with USDA Smart Snacks in Schools for all foods available on the school campus during the school day with the objective of promoting student health and reducing childhood obesity.
 - Establish guidelines in accordance with USDA Smart Snacks in Schools for the sale of food items for fundraising.
 - Use Smart Snacks Resources to educate the school community about the importance of offering healthy snacks for students and staff members.
 - <http://www.fns.usda.gov/healthierschoolday/tools-schools-focusing-smart-snacks>
- Smart Snacks Product Calculator:
- The Alliance for a Healthier Generation Smart Snacks Product Calculator is an effective online instrument that has been determined by

the USDA, Food and Nutrition Service to be accurate in assessing product compliance with the federal requirements for Smart Snacks in Schools. The calculator can be used for food and beverage products. https://www.healthiergeneration.org/take_action/schools/snacks_and_beverages/smart_snacks/alliance_product_calculator/

Commitment to Food Safe Schools

Burnsville School will:

- Implement a food safety program based on HACCP principles for all school meals, as required by the USDA and the Mississippi Department of Education, Office of Child Nutrition Programs and ensure that the food service permit is current for the school sites. HACCP Principles for K-12 schools can be downloaded at: <http://www.nfsmi.org/ResourcesOverview.aspx?ID=151>
- Develop a food safety education plan for all staff and students, consistent with Fight Bac® (www.fightbac.org) and other national standards for safe food handling at home and in schools.
- Ensure that all staff has received instructions to support food safety on the school campus. Food Safety resources have been developed by the Office of Child Nutrition to assist with the training of school staff members. These resources which include a training power-point presentation, food Safety Post Test and Food Safety Post Test Answer Key can be found on the Office of Healthy Schools website at www.mde.k12.ms.us/ohs/home .
- All school personnel (school board members, administrators, teachers, school nurses, instructional and health services paraprofessionals, foodservice staff, custodians and facilities managers, and administrative support staff) will receive copies of the Local School Wellness Policy that includes food safety policies and procedures and provides for relevant professional development.
- Adequate access to hand-washing facilities and supplies will be available whenever and wherever students, staff, and families prepare, handle, or consume food.
- The food safety assurance plan must address strategies that minimize risks for students and staff who have food allergies and intolerances.

Commitment to Physical Activity/Physical Education

Burnsville School will:

- Provide 150 minutes per week of activity-based instruction for all students in grades K-8 (in accordance with Section 37-13-134, Mississippi Code of 1972, ann., reference -2014 Mississippi Public Schools Accountability Standards 27.1.

- Provide Physical Education/Activity in accordance with the Physical Education Rules and Regulations as approved by the State Board of Education in compliance with the Mississippi Healthy Students Act (State Board of Education Policy 4012).
- Require fitness testing for all 5th grade students.
- Offer a planned sequential program of physical education instruction incorporating individual and group activities, which are student centered and taught in a positive environment.
- Instruction must be based on 2013-2014 Mississippi Physical Education Frameworks.
- Implement the requirements of the Mississippi Healthy Students Act of 2007 (Senate Bill 2369).
- Address concussions by adopting and implementing a policy for students in grades 7-12 who participate in activities sanctioned by the Mississippi High School Activities Association (MHSAA). This policy will include a concussion recognition course that has been endorsed by the Mississippi Department of Health. This course will provide information on the nature and risk of concussions for students participating in athletics. Also included in the policy, parents/guardians will be provided with a concussion policy before the start of regular school athletic season. (House Bill 48)

Commitment to Comprehensive Health Education

Burnsville School will:

- Implement the requirements of the Mississippi Healthy Students Act of 2007, which requires 45 minutes per week of health education instruction as defined by the State Board of Education for grades K through 8.
- Instruction must be based on the Mississippi Contemporary Health for grades K-8.
- Implement the requirements of MS code 37-13-171, which requires the development of a sex related education policy and instruction on medically accurate or evidenced based abstinence-only or abstinence-plus curricula.

Commitment to a Healthy School Environment

Burnsville School will:

- Ensure that there are no pad locks or chains on exit doors; exits should never be obstructed (in accordance with Mississippi State Fire Code). Ensure that all exit signs are illuminated and clearly visible.
- Ensure that all chemicals are stored properly (in accordance with the Material Safety Data Sheet www.msdssearch.com).

- Refer to the U.S. Consumer Product Safety Commission's Handbook for Public Playground Safety (www.cpsc.gov); for federal guidelines for playground safety.
- Ensure that fire extinguishers are inspected each year and properly tagged.
- Complete yearly maintenance of the heating and cooling system in your school; check coils, filters, belts, etc. in order to maintain safe operation and healthy air quality.
- Conduct at least one emergency evacuation drill per month.
- Every school will have an anti-bullying policy that outlines procedures for dealing with bullying situations in the school.
- Ensure that two means of escape are available in each classroom in case of an emergency; if there is only one door, designate a window (properly sized) as a means of escape.
- Never use extension cords as a permanent source of electricity anywhere on a school campus.
- Comply with the applicable rules and regulations of the State Board of Education in the operation of its transportation program (in accordance with the MS Code 37-41-53; State Board of Education Policies 7903, 7904, and 7909; and Accreditation Standard #35).
 - Inspect all buses on a quarterly basis and ensure that they are well maintained and clean.
 - Require that all bus drivers have a valid bus driver certificate and a commercial driver's license and operates the bus according to all specified safety procedures. Maintain a record of yearly motor vehicle reports on each bus driver and evidence that each driver has received two hours of in-service training per semester. (SB Policy 7903)
 - Ensure arrival of all buses at their designated school sites prior to the start of the instructional day.
 - Conduct bus evacuation drills at least two times each year. (SB Policy 7904)
- Provide facilities that meet the criteria of: (MS Code 37-7-301 (c) (d) (j); 37-11-5, 49 and 45-11-101; and Accreditation Standard #29).
 - Provide facilities that are clean.
 - Provide facilities that are safe.
 - Provide proper signage that explains tobacco, weapons, and drugs are prohibited on the school campus and at school functions.
 - Provide operational facilities that are equipped and functional to meet the instructional needs of students and staff (in accordance with the Mississippi School Design Guidelines at www.edi.msstate.edu).
 - Provide air conditioning in all classrooms, Code §37-17-6(2) (2000).
- Comply with the requirements for Safe and Healthy Schools:

- Maintain a comprehensive School Safety Plan on file that has been approved annually by the local school board. (MS Code 37-3-81 and 37-3-82(2); and Accreditation Standard #37.1); see the School Safety Manual and the MDE School Occupational Safety and Crisis Response Plan at:
http://www.healthyschoolsms.org/healthy_school_environment/school_safety.htm.
 - State Board Policy EBB (1990) prohibits the possession of pistols, firearms or weapons by any person on school premises or at school functions. Code §37-11-18 (1996) requires any student who possesses a knife, a handgun, other firearm or any other instrument considered to be dangerous and capable of causing bodily harm or who commit a violent act on educational property be subject to automatic expulsion for one calendar year. The superintendent of the school is authorized to modify the period of time for expulsion on a case-by-case basis.
 - Prohibits students from possessing tobacco on any educational property, Criminal Code §97-32-9 (2000). Code §97-32-29 (2000) further prohibits the use of tobacco on any educational property for adults who, if in violation, would be subject to a fine and issued a citation by a law enforcement officer. Educational property is defined as any public school building or bus, campus, grounds, athletic field, or other property used or operated during a school-related activity.
- Eliminate unnecessary school bus idling that causes pollution and creates health risk for children such as; asthma, allergies, and other respiratory problems
(www.epa.gov/cleanschoolbus).
 - Utilize the District Safety Officer/ School Resource Officer.
 - Conduct random drug testing on students participating in extracurricular activities.
 - Utilize security cameras on the school campus.
 - Utilize regularly scheduled meetings with the School Health Council, school board members, etc. to determine and discuss the current strengths, weaknesses, opportunities, and challenges associated with implementing and maintaining your school's healthy and safe environment.

Commitment to Quality Health Services

Burnsville School will:

- Ensure all school nurses are working under the guidelines of the *Mississippi School Nurse Procedures and Standards of Care*.
- Provide for teachers and staff training regarding signs and symptoms of asthma. (MS Code Sections 37-11-71 and 73-25-37)

- Every child who has been diagnosed with asthma must have an asthma action plan on file in the school office.
- Know the district anaphylaxis policy. Providing training by a healthcare professional, preferably a school nurse, for the individuals that will be responsible for implementing the policy at the school site. (MS code sections 37-11-71 and 73-25-37)
- Burnsville School will implement the School Access to Emergency Epinephrine Act, which allows schools to stock an EpiPen on School campus for severe allergic reactions.
- Offer health services for students in grades K-8, through the employment of school nurses, as a means to academic success.
- Collaborate with other school staff to provide health services as part of a Coordinated School Health Program.
- Work with students, parents, and local healthcare providers to effectively manage and treat chronic diseases.
- The school nurse should attend at least one MDE sponsored training each school year.
- The school nurse should submit services data on the 10th of each month for the previous month.

Commitment to Providing Counseling, Psychological, and Social Services

Burnsville School will:

- Adhere to the details outlined in the Licensure Guidelines (436 or 451) when hiring guidance counselors and psychologists. The state does not have a policy specifically outlining the requirements for a school social worker. For licensure as a social worker in the state of Mississippi, a candidate must: provide verification of a baccalaureate degree in social work from a college or university accredited by the Council on Social Work Education (CSWE) or Southern Association of Colleges and Schools (SACS) and scores a minimum of 70 on the ASWB basic exam.
- Abide by Mississippi Code 37-9-79 (Amended 2014) as the school provides for counseling and guidance for students.
- Hire school guidance counselors with a minimum of a Master's Degree in Guidance and Counseling, or in an emergency situation, an appropriate certification as determined by the Commission on Teacher and Administrator Education, Certification and Licensure and Development.

- Hire school counselors who agree to abide by the American School Counselor Association Code of Ethics.
- Ensure that all school guidance counselors provide comprehensive counseling services such as:
 - Academic and personal/social counseling
 - Student assessment and assessment counseling
 - Career and educational counseling
 - Individual and group counseling
 - Crisis intervention and preventive counseling
 - Provide all licensed teachers and principals with in-service suicide prevention training as directed by MS Code 37-3-101.
 - Referrals to community agencies
 - Educational consultations and collaborations with teachers, administrators, parents and community leaders
 - Education and career placement services
 - Follow-up counseling services
 - Conflict resolution
 - Professional school counselors must spend a minimum of eighty percent (80%) of their contractual time to the delivery of services to students as outlined by the American School Counselor Association.
- Offer quality counseling, psychological and social services provided by professionals such as certified school counselors, psychologists, and social workers.
- Provide additional services to improve students' mental, emotional, and social health.
- Offer counseling, group assessments, interventions and other mental health services, as well as referrals to community health professionals.
- Hire qualified counselors who will address the mental health, academic, and career needs of students in the school setting.

Commitment to Family and Community Involvement

Burnsville School will:

- Invite parents and community members to participate in the school health planning by serving on the local School Health Council.

Commitment to Implementing a Quality Staff Wellness Program

Burnsville School will:

- Provide means of health promotion for school staff to include opportunities for physical activity, health screenings, nutrition education, weight

management, smoking cessation, and stress reduction and management.

- Implement a healthy weight program for staff, such as Weight Watchers at Work Program®, www.weightwatchers.com.

Commitment to Marketing a Healthy School Environment

Burnsville School will:

- Provide positive, motivating messages, both verbal and non-verbal, about healthy lifestyle practices throughout the school setting. All school personnel will help reinforce these positive messages.
- Promote healthful eating, physical activity, and healthy lifestyles to students, parents, teachers, administrators, and the community at school events
- Eliminate advertising and other materials on the school campus that promote foods of minimal nutrition value.

Commitment to Implementation

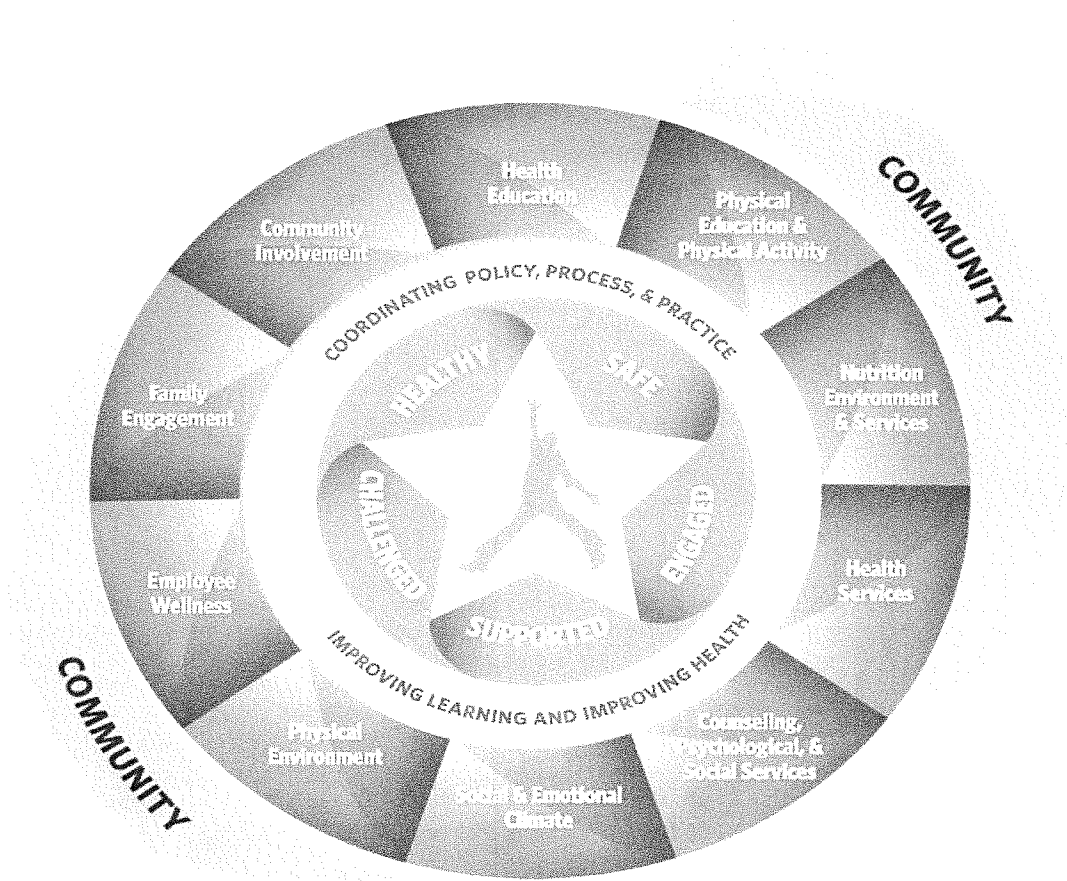
Burnsville School will:

- Establish a plan for implementation of the school wellness policy.
- Designate one or more persons to insure that the school wellness policy is implemented as written.
- Establish and support a School Health Council (SHC) that addresses all aspects of a coordinated school health program, including a school wellness policy (Mississippi Code of 1972 Annotated, Section 37-13-134).
- Conduct a review of the progress toward school wellness policy goals each year to identify areas for improvement.
- Prepare and submit a yearly report to the school board regarding the progress toward implementation of the school wellness policy and recommendations for any revisions to the policy as necessary.

In accordance with Federal law and U.S. Department of Agriculture (USDA) policy, discrimination is prohibited on the basis of race, color, national origin, sex, age, or disability.

To file a complaint of discrimination, write USDA, Director, Office of Civil Rights, Room 326-W, Whitten Building, 1400 Independence Avenue, SW, Washington, D.C. 20250-9410 or call (202) 720-5964 (voice and TDD). USDA is an equal opportunity provider and employer.

WHOLE SCHOOL, WHOLE COMMUNITY, WHOLE CHILD





Burnsville School Wellness Policy

2022-2023



Rationale:

The link between health of students and learning is well documented. If children are to be successful in school they cannot be tired, hungry, sick, suffering from drug abuse, or worried that school is an unsafe environment in which they could become a victim of a violent act. It has become apparent that problems such as poor nutrition, lack of physical activity, substance abuse, depression, teen pregnancy, obesity, bullying, and more – can adversely affect not only a child’s health, but also his or her *ability to learn!* And that is precisely why a coordinated approach to school health can make a difference! A coordinated approach to school health improves kids’ health and their capacity to learn through the support of families, schools, and communities working together. At its very core, a coordinated approach to school health is about keeping students healthy over time, reinforcing positive healthy behaviors throughout the school day, and making it clear that *good health and learning go hand in hand.*

Goal:

All students in Burnsville School shall possess the knowledge and skills necessary to make healthy choices that promote healthy lifestyles. All staff in Burnsville School are encouraged to model healthful eating and physical activity as a valuable part of daily life.

To meet this goal, Burnsville School adopts this school wellness policy with the following commitments to implementing a coordinated approach to school health. This policy is designed to effectively utilize school and community resources and to justifiably serve the needs and interests of all students and staff, taking into consideration differences in culture.

In determining these goals for nutrition promotion and education, physical activity, and other school-based activities that promote student wellness, the Burnsville School Health Council will review and consider evidence-based strategies.

Commitment to Nutrition

Burnsville School will:

- Offer a school lunch program with menus that meet the meal patterns and nutrition standards established by the U.S. Department of Agriculture (USDA) and the Mississippi Department of Education, Office of Child Nutrition Programs.
- Offer school breakfast and snack programs (where approved and applicable) with menus that meet the meal patterns and nutrition standards established by the USDA and the Mississippi Department of Education, Office of Child Nutrition Programs.
- Promote participation in school meal programs to families and staff.
- Operate all Child Nutrition Programs with school foodservice staff who are properly qualified according to current professional standards (Mississippi Board of Education Policy, Code 2001).
- Follow State Board of Education policies on competitive foods and extra food sales (Mississippi Board of Education Policy, Code 2002).
- Include goals for nutrition promotion, nutrition education, physical activity and other school-based activities to promote student wellness.
- Implement Nutrition Standards as adopted by the State Board of Education in accordance with the Mississippi Healthy Students Act (State Board of Education Policy 4011),
 - ❑ Healthy food and beverage choices;
 - ❑ Healthy food preparation;
 - ❑ Marketing of healthy food choices to students, staff and parents;
 - ❑ Food preparation ingredients and products;
 - ❑ Minimum/maximum time allotted for students and staff lunch and breakfast;
 - ❑ Availability of food items during the lunch and breakfast periods of the Child Nutrition Breakfast and Lunch Programs;
 - ❑ Methods to increase participation in the Child Nutrition School Breakfast and Lunch Programs.
- Establish guidelines in accordance with USDA Smart Snacks in Schools for all foods available on the school campus during the school day with the objective of promoting student health and reducing childhood obesity.

- Establish guidelines in accordance with USDA Smart Snacks in Schools for the sale of food items for fundraising.
 - Use Smart Snacks Resources to educate the school community about the importance of offering healthy snacks for students and staff members.
 - <http://www.fns.usda.gov/healthierschoolday/tools-schools-focusing-smart-snacks>
- Smart Snacks Product Calculator:
- The Alliance for a Healthier Generation Smart Snacks Product Calculator is an effective online instrument that has been determined by the USDA, Food and Nutrition Service to be accurate in assessing product compliance with the federal requirements for Smart Snacks in Schools. The calculator can be used for food and beverage products. <https://www.healthiergeneration.org/take-action/schools/snacks-and-beverages/smart-snacks/alliance-product-calculator/>

Commitment to Food Safe Schools

Burnsville School will:

- Implement a food safety program based on HACCP principles for all school meals, as required by the USDA and the Mississippi Department of Education, Office of Child Nutrition Programs and ensure that the food service permit is current for the school sites. HACCP Principles for K-12 schools can be downloaded at: <http://www.nfsmi.org/ResourcesOverview.aspx?ID=151>
- Develop a food safety education plan for all staff and students, consistent with Fight Bac® (www.fightbac.org) and other national standards for safe food handling at home and in schools.
- Ensure that all staff has received instructions to support food safety on the school campus. Food Safety resources have been developed by the Office of Child Nutrition to assist with the training of school staff members. These resources which include a training power-point presentation, food Safety Post Test and Food Safety Post Test Answer Key can be found on the Office of Healthy Schools website at www.mde.k12.ms.us/ohs/home .
- All school personnel (school board members, administrators, teachers, school nurses, instructional and health services paraprofessionals, foodservice staff, custodians and facilities managers, and administrative support staff) will receive copies of the Local School Wellness Policy that includes food safety policies and procedures and provides for relevant professional development.
- Adequate access to hand-washing facilities and supplies will be available whenever and wherever students, staff, and families prepare, handle, or consume food.

- The food safety assurance plan must address strategies that minimize risks for students and staff who have food allergies and intolerances.

Commitment to Physical Activity/Physical Education

Burnsville School will:

- Provide 150 minutes per week of activity-based instruction for all students in grades K-8 (in accordance with Section 37-13-134, Mississippi Code of 1972, ann., reference 2014 Mississippi Public Schools Accountability Standards 27.1.
- Provide Physical Education/ Activity in accordance with the Physical Education Rules and Regulations as approved by the State Board of Education in compliance with the Mississippi Healthy Students Act (State Board of Education Policy 4012).
- Require fitness testing for all 5th grade students.
- Offer a planned sequential program of physical education instruction incorporating individual and group activities, which are student centered and taught in a positive environment.
- Instruction must be based on 2013-2014 Mississippi Physical Education Frameworks.
- Implement the requirements of the Mississippi Healthy Students Act of 2007 (Senate Bill 2369).
- Address concussions by adopting and implementing a policy for students in grades 7-12 who participate in activities sanctioned by the Mississippi High School Activities Association (MHSAA). This policy will include a concussion recognition course that has been endorsed by the Mississippi Department of Health. This course will provide information on the nature and risk of concussions for students participating in athletics. Also included in the policy, parents/guardians will be provided with a concussion policy before the start of regular school athletic season. (House Bill 48)

Commitment to Comprehensive Health Education

Burnsville School will:

- Implement the requirements of the Mississippi Healthy Students Act of 2007, which requires 45 minutes per week of health education instruction as defined by the State Board of Education for grades K through 8.
- Instruction must be based on the Mississippi Contemporary Health for grades K-8.

- Implement the requirements of MS code 37-13-171, which requires the development of a sex related education policy and instruction on medically accurate or evidenced based abstinence-only or abstinence-plus curricula.

Commitment to a Healthy School Environment

Burnsville School will:

- Ensure that there are no pad locks or chains on exit doors; exits should never be obstructed (in accordance with Mississippi State Fire Code). Ensure that all exit signs are illuminated and clearly visible.
- Ensure that all chemicals are stored properly (in accordance with the Material Safety Data Sheet www.msdssearch.com).
- Refer to the U.S. Consumer Product Safety Commission's Handbook for Public Playground Safety (www.cpsc.gov); for federal guidelines for playground safety.
- Ensure that fire extinguishers are inspected each year and properly tagged.
- Complete yearly maintenance of the heating and cooling system in your school; check coils, filters, belts, etc. in order to maintain safe operation and healthy air quality.
- Conduct at least one emergency evacuation drill per month.
- Every school will have an anti-bullying policy that outlines procedures for dealing with bullying situations in the school.
- Ensure that two means of escape are available in each classroom in case of an emergency; if there is only one door, designate a window (properly sized) as a means of escape.
- Never use extension cords as a permanent source of electricity anywhere on a school campus.
- Comply with the applicable rules and regulations of the State Board of Education in the operation of its transportation program (in accordance with the MS Code 37-41-53; State Board of Education Policies 7903, 7904, and 7909; and Accreditation Standard #35).
 - Inspect all buses on a quarterly basis and ensure that they are well maintained and clean.
 - Require that all bus drivers have a valid bus driver certificate and a commercial driver's license and operates the bus according to all specified safety procedures. Maintain a record of yearly motor vehicle reports on each bus driver and evidence that each driver has received two hours of in-service training per semester. (SB Policy 7903)

- o Ensure arrival of all buses at their designated school sites prior to the start of the instructional day.
 - o Conduct bus evacuation drills at least two times each year. (SB Policy 7904)
- Provide facilities that meet the criteria of: (MS Code 37-7-301 (c) (d) (j); 37-11-5, 49 and 45-11-101; and Accreditation Standard #29).
 - o Provide facilities that are clean.
 - o Provide facilities that are safe.
 - o Provide proper signage that explains tobacco, weapons, and drugs are prohibited on the school campus and at school functions.
 - o Provide operational facilities that are equipped and functional to meet the instructional needs of students and staff (in accordance with the Mississippi School Design Guidelines at www.edi.msstate.edu).
 - o Provide air conditioning in all classrooms, Code §37-17-6(2) (2000).
- Comply with the requirements for Safe and Healthy Schools:
 - o Maintain a comprehensive School Safety Plan on file that has been approved annually by the local school board. (MS Code 37-3-81 and 37-3-82(2); and Accreditation Standard #37.1); see the School Safety Manual and the MDE School Occupational Safety and Crisis Response Plan at: http://www.healthyschoolsms.org/healthy_school_environment/school_safety.htm
 - o State Board Policy EBB (1990) prohibits the possession of pistols, firearms or weapons by any person on school premises or at school functions. Code §37-11-18 (1996) requires any student who possesses a knife, a handgun, other firearm or any other instrument considered to be dangerous and capable of causing bodily harm or who commit a violent act on educational property be subject to automatic expulsion for one calendar year. The superintendent of the school is authorized to modify the period of time for expulsion on a case-by-case basis.
 - o Prohibits students from possessing tobacco on any educational property, Criminal Code §97-32-9 (2000). Code §97-32-29 (2000) further prohibits the use of tobacco on any educational property for adults who, if in violation, would be subject to a fine and issued a citation by a law enforcement officer. Educational property is defined as any public school building or bus, campus, grounds, athletic field, or other property used or operated during a school-related activity.
 - Eliminate unnecessary school bus idling that causes pollution and creates health risk for children such as; asthma, allergies, and other respiratory problems (www.epa.gov/cleanschoolbus).
 - Utilize the District Safety Officer/ School Resource Officer.

- Conduct random drug testing on students participating in extracurricular activities.
- Utilize security cameras on the school campus.
- Utilize regularly scheduled meetings with the School Health Council, school board members, etc. to determine and discuss the current strengths, weaknesses, opportunities, and challenges associated with implementing and maintaining your school's healthy and safe environment.

Commitment to Quality Health Services

Burnsville School will:

- Ensure all school nurses are working under the guidelines of the *Mississippi School Nurse Procedures and Standards of Care*.
- Provide for teachers and staff training regarding signs and symptoms of asthma. (MS Code Sections 37-11-71 and 73-25-37)
- Every child who has been diagnosed with asthma must have an asthma action plan on file in the school office.
- Know the district anaphylaxis policy. Providing training by a healthcare professional, preferably a school nurse, for the individuals that will be responsible for implementing the policy at the school site. (MS code sections 37-11-71 and 73-25-37)
- Burnsville School will implement the School Access to Emergency Epinephrine Act, which allows schools to stock an EpiPen on School campus for severe allergic reactions.
- Offer health services for students in grades K-8, through the employment of school nurses, as a means to academic success.
- Collaborate with other school staff to provide health services as part of a Coordinated School Health Program.
- Work with students, parents, and local healthcare providers to effectively manage and treat chronic diseases.
- The school nurse should attend at least one MDE sponsored training each school year.
- The school nurse should submit services data on the 10th of each month for the previous month.

Commitment to Providing Counseling, Psychological, and Social Services

Burnsville School will:

- Adhere to the details outlined in the Licensure Guidelines (436 or 451) when hiring guidance counselors and psychologists. The state does not have a policy specifically outlining the requirements for a school social worker. For licensure as a social worker in the state of Mississippi, a candidate must: provide verification of a baccalaureate degree in social work from a college or university accredited by the Council on Social Work Education (CSWE) or Southern Association of Colleges and Schools (SACS) and scores a minimum of 70 on the ASWB basic exam.
- Abide by Mississippi Code 37-9-79 (Amended 2014) as the school provides for counseling and guidance for students.
- Hire school guidance counselors with a minimum of a Master's Degree in Guidance and Counseling, or in an emergency situation, an appropriate certification as determined by the Commission on Teacher and Administrator Education, Certification and Licensure and Development.
- Hire school counselors who agree to abide by the American School Counselor Association Code of Ethics.
- Ensure that all school guidance counselors provide comprehensive counseling services such as:
 - Academic and personal/social counseling
 - Student assessment and assessment counseling
 - Career and educational counseling
 - Individual and group counseling
 - Crisis intervention and preventive counseling
 - Provide all licensed teachers and principals with in-service suicide prevention training as directed by MS Code 37-3-101.
 - Referrals to community agencies
 - Educational consultations and collaborations with teachers, administrators, parents and community leaders
 - Education and career placement services
 - Follow-up counseling services
 - Conflict resolution
 - Professional school counselors must spend a minimum of eighty percent (80%) of their contractual time to the delivery of services to students as outlined by the American School Counselor Association.
- Offer quality counseling, psychological and social services provided by professionals such as certified school counselors, psychologists, and social workers.

- Provide additional services to improve students' mental, emotional, and social health.
- Offer counseling, group assessments, interventions and other mental health services, as well as referrals to community health professionals.
- Hire qualified counselors who will address the mental health, academic, and career needs of students in the school setting.

Commitment to Family and Community Involvement

Burnsville School will:

- Invite parents and community members to participate in the school health planning by serving on the local School Health Council.

Commitment to Implementing a Quality Staff Wellness Program

Burnsville School will:

- Provide means of health promotion for school staff to include opportunities for physical activity, health screenings, nutrition education, weight management, smoking cessation, and stress reduction and management.
- Implement a healthy weight program for staff, such as Weight Watchers at Work Program®, www.weightwatchers.com.

Commitment to Marketing a Healthy School Environment

Burnsville School will:

- Provide positive, motivating messages, both verbal and non-verbal, about healthy lifestyle practices throughout the school setting. All school personnel will help reinforce these positive messages.
- Promote healthful eating, physical activity, and healthy lifestyles to students, parents, teachers, administrators, and the community at school events
- Eliminate advertising and other materials on the school campus that promote foods of minimal nutrition value.

Commitment to Implementation

Burnsville School will:

- Establish a plan for implementation of the school wellness policy.
- Designate one or more persons to insure that the school wellness policy is implemented as written.
- Establish and support a School Health Council (SHC) that addresses all aspects of a coordinated school health program, including a school wellness policy (Mississippi Code of 1972 Annotated, Section 37-13-134).
- Conduct a review of the progress toward school wellness policy goals each year to identify areas for improvement.
- Prepare and submit a yearly report to the school board regarding the progress toward implementation of the school wellness policy and recommendations for any revisions to the policy as necessary.

In accordance with Federal law and U.S. Department of Agriculture (USDA) policy, discrimination is prohibited on the basis of race, color, national origin, sex, age, or disability.

To file a complaint of discrimination, write USDA, Director, Office of Civil Rights, Room 326-W, Whitten Building, 1400 Independence Avenue, SW, Washington, D.C. 20250-9410 or call (202) 720-5964 (voice and TDD). USDA is an equal opportunity provider and employer.

WHOLE SCHOOL, **WHOLE COMMUNITY**, WHOLE CHILD



