

GDHS Theater Presents

# THE ODYSSEY

November 11th-19th, 2022

Tickets and Information:  
[gds.org/Odyssey](http://gds.org/Odyssey)



Nava Mach



# THE ODYSSEY

By Mary Zimmerman





Director: Laura Rosberg

Technical Director: Christal Boyd

Assistant to the Technical Director:  
Becca Balton '10

Technical Advisors: Becca Balton '10,  
Jacob Ali-Korde '22, Andrew Derbyshire

Stage Manager: Katie Young '23

Assistant Stage Manager: Paige Young '25

Producer: Jaia Wilensky '23

Assistant Producer: Leia Levine '25

Publisher: Nava Mach '23

House/ Box Office Manager:

Caleb Robinson '25

Dedicated to B.E.S.

*Her Odyssey was filled with theater.*



# Cast

Avram Shapiro '24-Odysseus

Morgana Brand '24-Athena

Rachel Schneider '24-Penelope, Siren, Sailor

Henry Cohen '25-Telemachus

Janel Butler-Roberts '23-Zeus, Eumaeus

Alessandro Alfandari '25-Suitor, Poseidon, Hermes, Sailor

Jacqueline Metzger '23-Circe, Suitor, Siren, Helen

Wesley Brubaker-Menelaus, Alcinous, Suitor, Laertes

Olivia Brown '24-Muse, Calypso, Siren, Eurycleia

Posy Brown '24-Nausicaa, Siren

Jacob Getlan '23-Suitor, Neoman, Sailor

Joshua Reynolds '24-Antinous, Cyclops

Charlotte Green '25-Siren

Caleb Murphy '25-Suitor, Young Menelaus, Elpenor, Sailor

EJ Mazo '26-Proteus, Mentor, Sailor

Ethan Farber '26-Blind Singer

Nura Idriss '26-Sailor

Max Stumpf '24-Sailor

Isa Martorana '24, Alexander Grunwaldt '24, Ava Lewis '24,

CeCe Gann '25, Elly Robinson '23, Mad Lee '26 -Scylla



# Crew

## Props

### Designers & Heads:

Isa Martorana '24

Alexander Grunwaldt '24

### Crew:

Ava Lewis '24

CeCe Gann '25

Elly Robinson '23

Mad Lee '26

## Lights

### Designer:

Grey Papageorgiou '23

### Head:

Henry Mitchell '24

### Crew:

Maya Raza '25

Noah Cheeks '25

Khari Bell '25

Caleb Robinson '25

## Costumes

### Designers:

Sophie Wohlstadter '23

Posy Brown '24

### Heads:

Ellie Schaffer '25

Ava Ginsberg '25

### Crew:

Elodie Florence '25

Sarah Swamy '25

Jack Hoang '25

Sofia Moen '25

Kate Toufanian '25

Ava Blum '23

Rose Atwood '25

Shaila Joshi '25

## Sound/ FX

### Designer:

Ian Rothfeld '23

### Head:

Nora Schrag '25

### Crew:

Ella Lay '25

Sofia Moen '25

Noah Spector '25

Eleanor Schneider '26



# Crew

## Sets

### Designers:

Tenaya Lin '23

Maya Raman '23

### Heads:

Rasmus Byskov '24

Avery Ludlow '24

hannah kubler '25

### Crew:

Margaret Blomstrom '24

Caitlyn Quint '26

Ella Schneider '26

Alex Wood '23

Aidan Jacobs '25

Sofia Moen '25

Zoya Mghenyi '26

Alex Rohrbaugh '26

Lina Colla '26

Sotiria Jackson '24

Quinn Shields '26

## Orchestra

Topher Dunne

Jaia Wilensky '23

## Makeup

### Designers & Heads :

Kate Toufanian '25

Sophie Selfridge '25

### Crew:

Leia Levine '25

Paige Young '25

Angelique Faselis '25

Tiya Robi '25

Tatum Mach '26

Aymaan Enayetullag '25

Finley Meyer '26

Tessa Fergusson '26

Arden Mason '25

Adele Ziemba '25

Wyatt Grace '25

Koen Yu '25

# Special Thanks

## The Cleaning Crew

Danny Stock

Elvina Tong

Jamie Brown

John Burghardt

Jonathan Young

Kaiden Yu '23

Kayla Dunne

Lauren Dickert

Laurie Kohn

Maddie Brown '20

Maresca Brand '14

## The Maintenance Staff

Michael Desautels

Ravelle Brickman

## The Security Team

Tim Lyons

Scott Brown





# Director's Notes

The theater is full of ghosts, so we leave a ghost light on the stage all night. The ghosts come from many superstitions and from some real horrors! We call it **The Scottish Play** because a coven of witches put a curse on the play, angry that Shakespeare used a real spell in the text. The falling chandelier in **Phantom** is based on an 1896 incident at the Palais Garnier when a chandelier counterweight fell, killing a theater worker. And, well, you know what happened to Abe at Ford's Theater who was quoting from **The Scottish Play** as the lights went down. We hadn't been leaving the ghost light on. Our ghost attacked our beloved Tech Director, Christal. It wasn't in the Box, but it was across the street from the earlier GDHS on MacArthur, where 1000's of theater alum dance all night. Our ghost went for her Achilles tendon, Homeric in every respect. Without Christal we limped along, employing some theater alum and a pro-rigger. The Maintenance Team helped too.

Mary Zimmerman has introduced the U.S. to a form of theater practiced in many other parts of the world, particularly Eastern Europe and Asia. This is ensemble work, many performers playing many roles. The work of the ensemble is physical---we're a boat, now a sheep on a spit. We move like amoebas. Stories are deconstructed---fewer sets and props, for example, so the audience is called upon to participate, imagining the pictures. And we talk to the audience directly, inviting them to play along. Another exponent of this style is John Doyle, most recently Artistic Director of Classical Stage Company, New York. In his musicals, the actors play the instruments and the instruments become props. A tambourine is also a plate, for example. In his Broadway **Sweeney** Patti LuPone played the tuba! In **The Odyssey**, chairs are boulders, axe heads, and more.

We need to talk about the women in Homer's story. This is an ancient story, yet the women are at the epicenter. Penelope foils the suitors for four years. Athena, the warrior, plots Odysseus' home-coming and slaughter of the suitors. Circe and Calypso seduce and love Odysseus and also help him get home. The Siren "number" is a parody and must be understood as such. The Sirens make fun of men by seducing them and then using them; well, in this case, drowning them. This is the one scene in the play in which Zimmerman acknowledges that the Ancients' understanding of the power of testosterone is timeless and universal, and that women since time immemorial have figured out how to deal with it.

Zimmerman brings classical stories to the stage. **Metamorphoses** and **Arabian Nights** were also performed at 4200. She re-imagines Leonardo da Vinci and forgotten operas. She often serves as writer, librettist director, performer, and producer all at once. She teaches in the Performance Studies Dept. at Northwestern and is the recipient of a boatload of awards and accolades.

I especially want to thank the student designers, crew heads and technicians who overnight switched their allegiances from Christal to me. They learned to trust my knowledge and experience and that of the others we brought in to help. They are extraordinary young people.

# Patrons

Leslie Jacobs, Earl Eutsler, Natasha Mazo, Igor Kach,  
Valentina Kach, Sabrina Bess, Amelia Bess, Ted Cruz, Ethan Farber,  
Muffin the Watersnake, Five O’Clock Shadow, The Ram,  
The Footloose Cowgirl, Cowboy Bob, Avery, Richard Ruth,  
Sherry and Heckel, Peter Heckel, Raina Brubaker, Jessia Hough,  
The White Rabbit, Sweeney Todd, Thomas “Patrons” Perry,  
Nina Butler-Roberts, Eric Butler-Roberts, Eliana Green,  
Stuart and Adrienne Green, Karen and Andrew Green,  
Leah Getlan, Elliott Colla, Nadine Antin, Coleman Colla,  
Nadia Medhi



The image features a dark blue silhouette of a classical Greek vase, possibly a hydria, centered on a solid blue background. The vase has a wide rim with a decorative band of repeating motifs. The main body of the vase is decorated with a relief of three female figures in classical attire. The figure on the left is gesturing, the central figure holds a staff, and the figure on the right stands with her hand on her hip. A smaller vase is positioned on the ground between the left and central figures. The word "Advertisements" is written in a white, serif font across the middle of the vase's body.

# Advertisements



**CONGRATULATIONS**  
**TO THE CAST AND CREW OF**  
***THE ODYSSEY***  
**WE LOVE YOU, MORGANA!**

Special shout-out to Tech!!!  
Lights! Sound! Costumes! Props! Makeup! and....

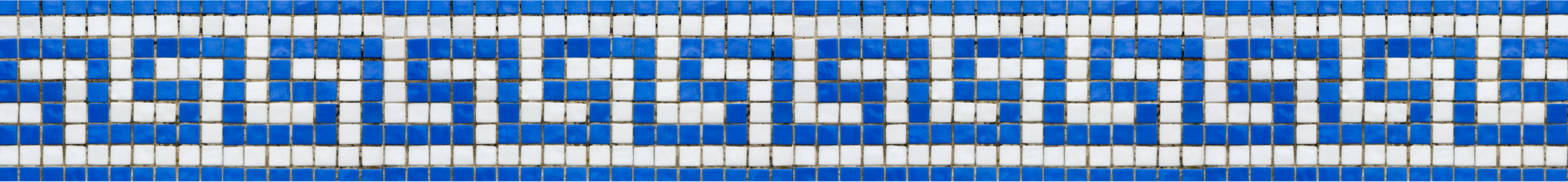
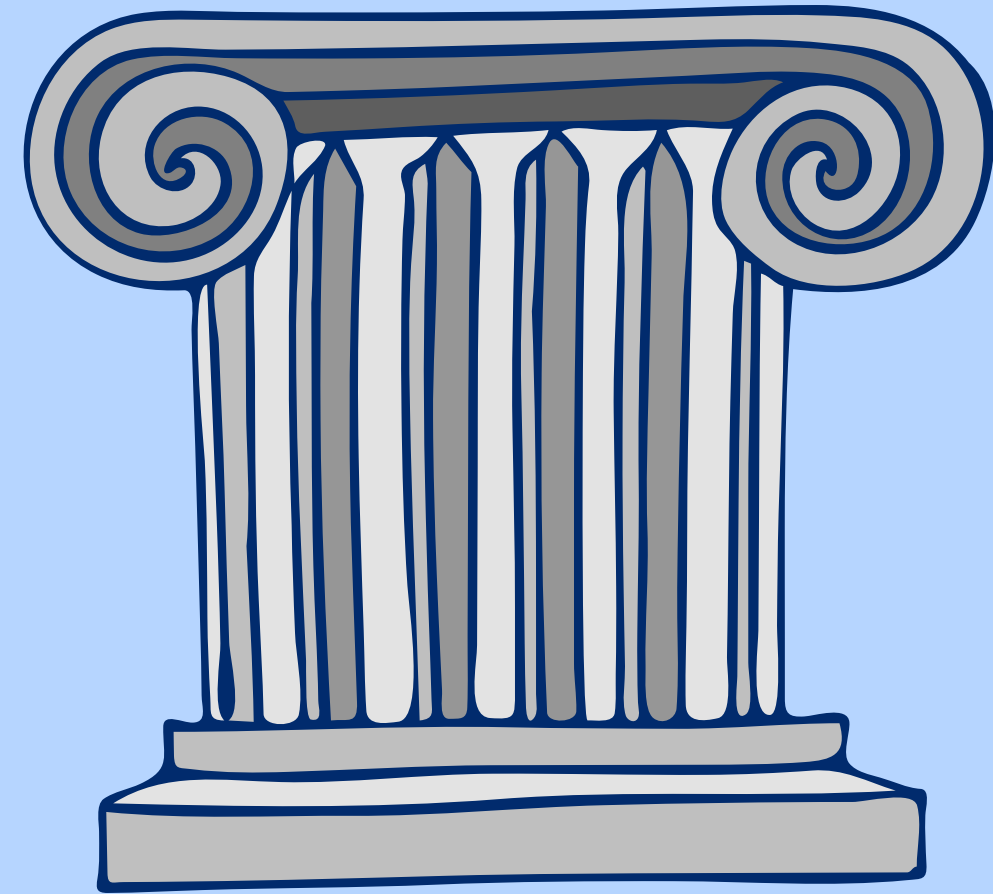
SCENIC!!!!!!

(There are no scenes without Scenic!)

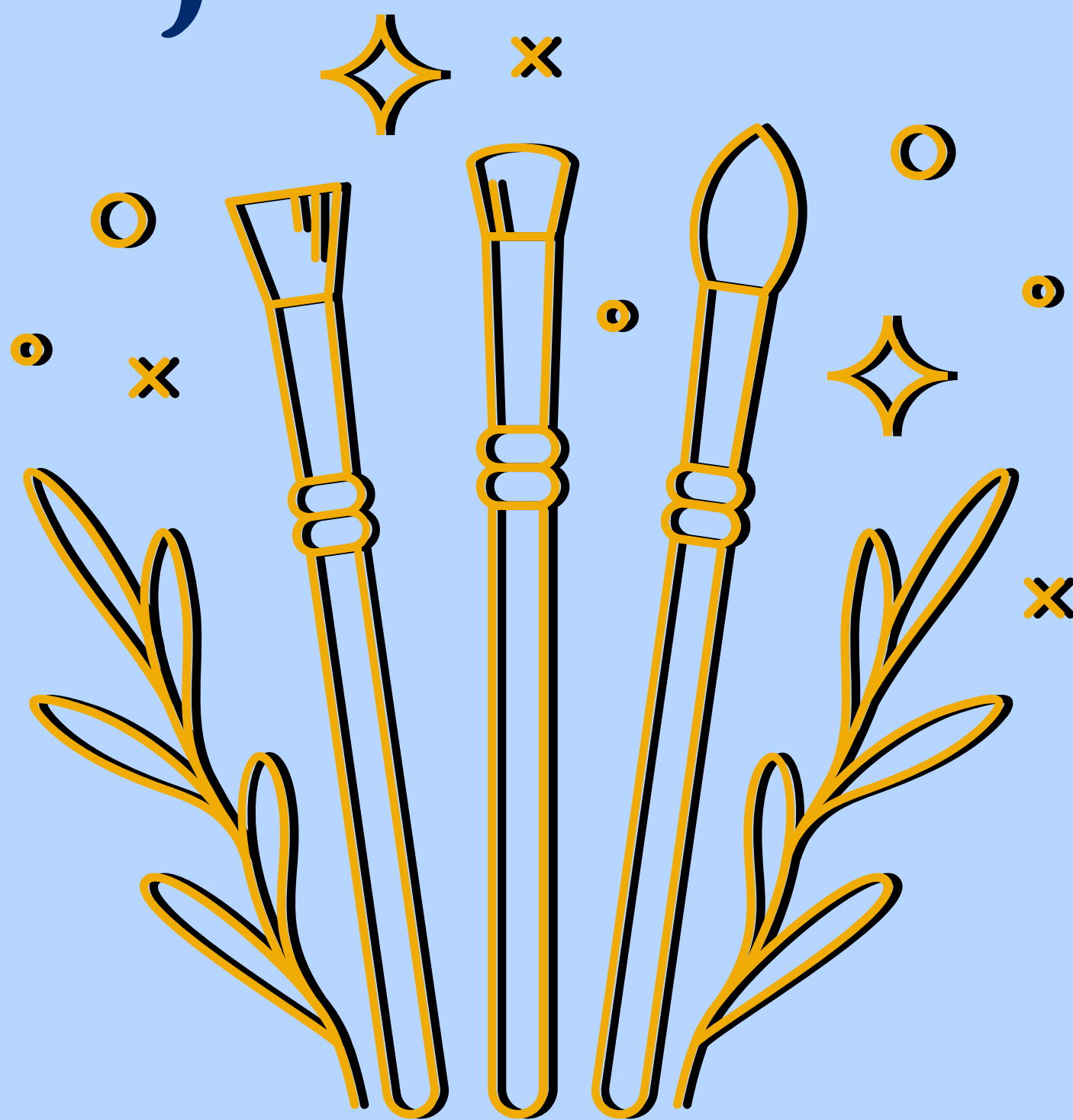
Avery, we are so proud of you!



Love,  
Mom and Dad  
Charlotte and Gigi  
Lily, Sadie and Bastian



Congrats to makeup crew  
on a job well done!



# CONGRATULATIONS TO THE CAST & CREW OF THE ODYSSEY



AND BREAK-A-LEG OLIVIA & POSY

XOXOX  
THE BROWN FAMILY

TO OUR BELOVED  
TECH DIRECTOR,

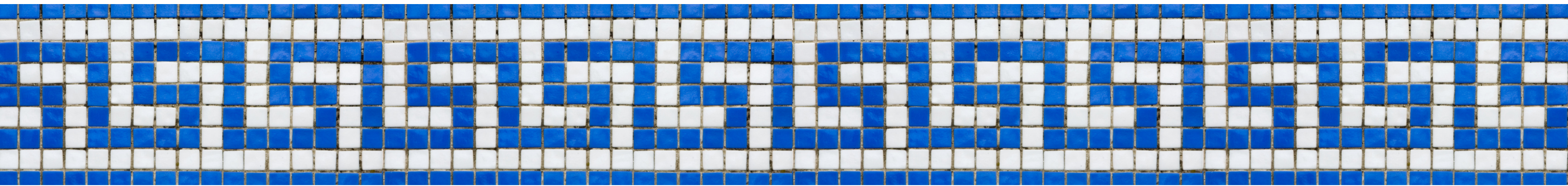
CHRISTAL

from

THE ODYSSEY  
COMPANY



From one great sound crew to another,  
**Congratulations**



**CONGRATULATIONS  
STUMEZ & POSY!!**  
The costumes are out of this world!!



XOXOXO  
THE BROWN FAMILY



**GDS presents**  
**THE**  
**ODYSSEY**

**CONGRATULATIONS ON AN  
AMAZING OPENING WEEKEND!**

**No journey is too long for this cast and crew!**



**What would we do without the  
essential workers (like sailors,  
sheep, and such) – thank you!**

# THE SHINE

