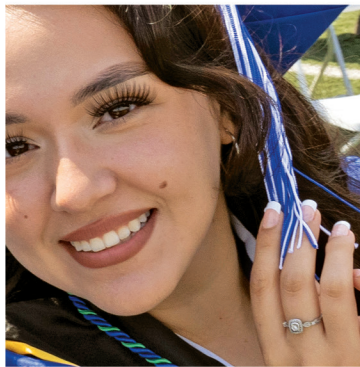


A Time of **Transition**



2022 Annual Report



A Time of Transition

The 2020-21 academic year brought unprecedented challenges, but also many signs of progress in our schools. Despite the ongoing COVID-19 pandemic, our students and staff started the school year with great determination as we offered in-person learning districtwide. Together, we persevered through variants and surges of the virus and then welcomed the easing of some pandemic restrictions, including an indoor masking mandate. Through it all, our employees remained focused on student wellbeing and achievement.

We know that many students are still recovering from the pandemic, both academically and emotionally, as evidenced by some of the metrics in this report. But we also saw significant academic growth this year, a testament to the Learning Acceleration and Support Plan that we began to implement. The plan has provided for literacy and math specialists, equity training for teachers, expanded tutoring and summer programming, a new way of collecting data to monitor student progress, the opening of wellness centers on every high school campus, and the launch of a Black Student Achievement Initiative. We hired hundreds of certificated staff, including teachers, counselors and social workers. Our Board of Education passed a courageous Excellence and Equity Policy and embarked upon several community visioning sessions. We began the replacement of furniture in every one of our classrooms, continued our extensive upgrades to school buildings, and engaged the public as we updated our Facilities Master Plan.



All of these efforts and more have built a solid foundation for the future of LBUSD and its students. I extend my deepest gratitude to everyone who supports this important work.

Warmly,

Jil A. Baker
Jil A. Baker, Ed. D.

2022 Expenditures – Learning Acceleration & Support Plan

Academic Acceleration and Support	\$65.7M
Infrastructure and Capital for the Future	\$19.6M
Social-Emotional Well-Being	\$5.8M
Engagement and Voice	\$5.3M

Mid-Year Progress

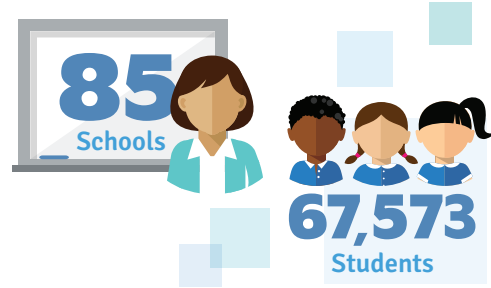
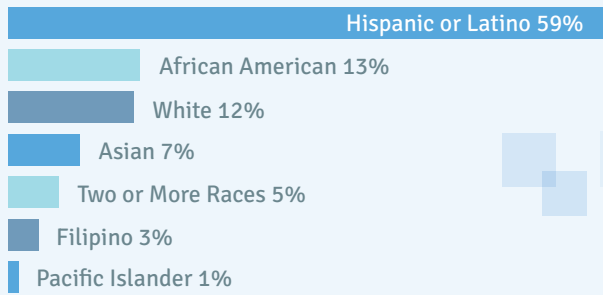
(% Increase in Students at or Above Grade Level)

All grade levels 1 to 8 showed a mid-year increase in the percent of students at or above grade level on both reading and math.

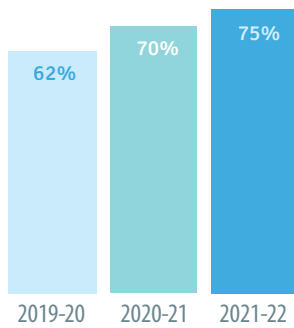
Subject	Grade							
	1	2	3	4	5	6	7	8
Reading	17	14	13	10	10	4	3	4
Math	14	13	16	18	15	12	6	8

Based upon growth from October 2021 to February 2022 i-Ready assessments.

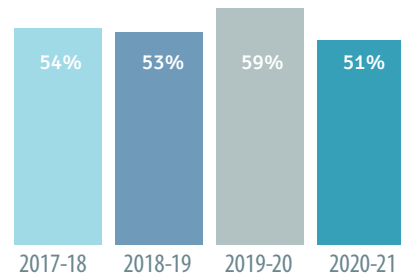
LBUSD Enrollment by Race/Ethnicity



Accelerated Math 6 Placement (%)

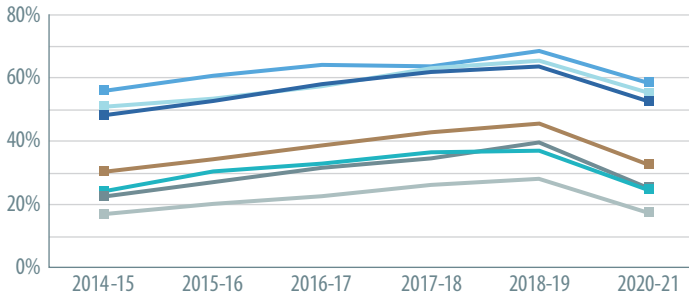


Percent of High School Ready 8th Graders

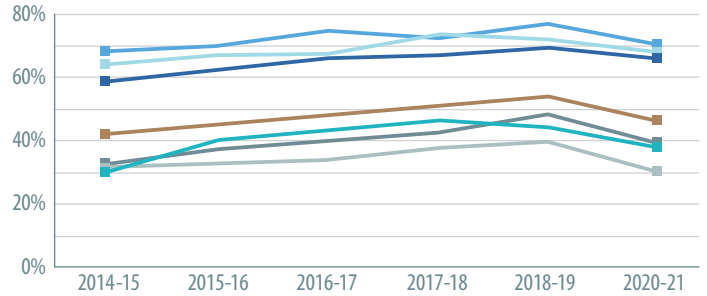


Student attendance is a key factor in the high school readiness calculation. The COVID-19 pandemic significantly impacted attendance in 2020-21.

SBAC Math Proficiency



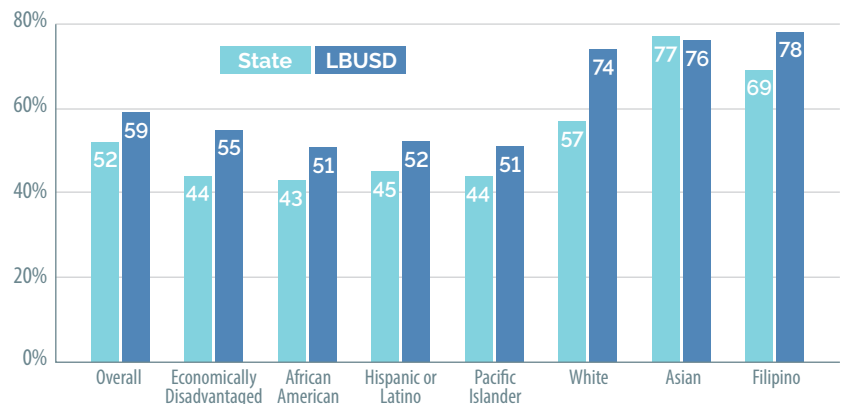
SBAC ELA Proficiency



■ All ■ African-American ■ Asian ■ Filipino ■ Hispanic ■ Pacific Islander ■ White

A-G Completion Rate

LBUSD surpasses statewide percentage of students completing UC and CSU entrance requirements (A-G Courses, 2021-22).



High School Graduation Rate

LBUSD **84%**
State **84%**

7 High Schools with Graduation Rates Above **90%**



Excellence and Equity



13 LBSD High Schools
Listed Among America's Best



**California Department of Education
Pivotal Practice Award**

Awarded to Webster Elementary School for exemplary support of students during the pandemic

Poly High School football, water polo and girls tennis won CIF Championships



Millikan boys wrestling were runners-up in CIF, and the softball team advanced to CIF finals

Jordan High School football reached division CIF Championship, and boys track won their CIF division championship for the first time in school history

Wilson boys swimming won their 49th consecutive Moore League Championship, a state record for the most consecutive championships in any sport



More than **400** credentialed new hires including teachers, counselors and social workers

More than **50,000** walk-ins to Wellness Centers



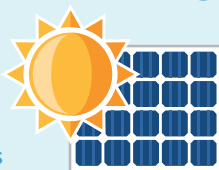
Percent of credentialed new hires

	2019-2020	2020-2021	2021-2022
African American	3%	13%	11%
Hispanic or Latino	27%	36%	32%

Sustainability



Project launched to replace drinking fountains with **250 filtered-water bottle-filling stations**



9.2 million megawatts of energy generated by solar panels



5,800 trees saved via electronic flyers

Infrastructure for the Future



9 schools received significant upgrades



1,298 Pre-K to kindergarten furniture pieces installed

Board of Education

Juan Benitez, Ph.D., President ■ Megan Kerr, Vice President
Diana Craighead, Member ■ Erik Miller, Member ■ Douglas Otto, Member



www.lbschools.net

