

IMPACT REPORT

2019–2020



SIMARY'S
ACADEMY
FAITH COMMUNITY JUSTICE RESPECT



Table of Contents

Thank You from the Academy President 4

SMA Mission and Vision 5

Message from Our Board Chair 6

Financials 7

Community Event Fundraising 8-9

Capital Improvements Campus Wide 10-11

Impact on Innovation 12-14

Far-reaching Impact of Annual Funds 15

President's Discretionary Fund (COVID-19) 16

Swivl Streaming Delivers Learning Home 17

Endowment Fund 18-19

Loretto Legacy Society 20

Thanks to Charlie Arbogast for 23 Years 21

684
students



71
different zip
codes

100%
participation in
community service



31%
diversity by
ethnicity

\$2 million
in scholarship
support



87% of SMA
graduates receive
merit-based scholarships





**ST. MARY'S
ACADEMY**
FAITH COMMUNITY JUSTICE RESPECT

Thank **you** from the Academy President

Dear St. Mary's Academy Community,

The COVID-19 Pandemic that afflicted the communities of the world in early 2020 presented challenges to every one of us. As family providers, we were asked to shift to remote work situations or adjust to changes in income that for many created serious concern. We worried for the health and wellbeing of family members near and far, some of them alone. As citizens, we followed development of protocols and vaccines, donned masks, cancelled travel, and washed hands. We became more aware of inequities in health care, childcare, and housing that impact the essential workers who remained on the job. As educators, we were challenged to continue to build community and maintain close relationships with our students and families while lifting learning via Zoom.

Through a constant emphasis on our Loretto School Values, we continued to successfully serve our community and forward our initiatives toward progress and parity. Thanks to our community's generous support of the 2019-20 Annual Fund, departments and divisions across campus last year benefited from renovated spaces, sports equipment, uniforms and cameras on the fields, state-of-the-art technology, and new curriculum and materials for STEAM. Our longtime commitment to Diversity, Equity and Inclusivity was powered up through our partnership with Dr. Maria Salazar, Professor at the University of Denver Morgridge College of Education. Hard work carried on.

I was able to direct community support from the President's Discretionary fund to our plans to reopen safely full time on campus in the fall, with a flexible remote learning option for families. Because community is everything to St. Mary's Academy, we prepared our campus for safe participation as much as the times could possibly allow. I want to acknowledge, also, our anonymous donors who made it possible to invest in the SWIVL technology that brought immersive, live-streaming from our classrooms to homes and the installation of an HVAC purification system that permanently upgraded the quality of air in our classrooms and sports center.

In the past year, we also celebrated the conclusion of the capital campaign that brought beautiful new spaces to the sacred space we have called St. Mary's Academy, in Cherry Hills Village since 1951, in Colorado Territory since 1864. We have proven once again that we can triumph over challenges, grow from them, and always commit to making the world a better place.

Warm regards,

A handwritten signature in black ink that reads "Bill Barrett". The signature is written in a cursive, slightly slanted style.

Bill Barrett
Academy President



OUR MISSION

St. Mary's Academy fosters excellence in each child through academic achievement, spiritual development and service. The Loretto School Values of faith, community, justice and respect provide the foundation for students to be powerful agents of change.

OUR VISION

Inspiring leaders to act with integrity, seek justice, build community, and change the world.



Message from Our Board Chair

The 2019-2020 school year was full of highs and lows. It was a record-breaking year for our Advancement efforts thanks to our SMA community. Notably, \$8 million was raised to complete our biggest capital campaign ever, and we also had a record-breaking Gala and Golf Tournament. Thanks to the generosity of the community, we shattered all previous amounts raised at our annual Gala in support of families in need as COVID-19 impacted each of us, and our faculty and staff giving was at 100%.

I want to thank Charlie Arbogast for his leadership in this record-breaking year. Charlie is a record breaker himself, having spent 23 years as Advancement Director. His dedication and commitment to St. Mary's has had such a positive impact on our community. He embodies the Loretto values and has been a great friend to all of us. He was a huge presence on campus and St. Mary's Academy's biggest cheerleader. We wish we could have celebrated his retirement properly at the end of the school year.

On behalf of the Board of Trustees, I want to thank our amazing faculty, staff and administrative team for all of their efforts to pivot to remote learning in March, as well as safely reopen in the Fall of 2020. Their dedication, hard work and creativity resulted in our ability to continue to deliver a quality education to our students. The trustees were excited to be able to surprise them at the end of the school year with a small token of our appreciation and gratitude for all they have done.

I also want to express my gratitude to our families for sticking with us. We know how difficult it was to make a quick switch to remote learning and juggling all the pressures of school, work and family life during COVID-19. Thank you for trusting St. Mary's with the care and education of your children and for being great partners with us.

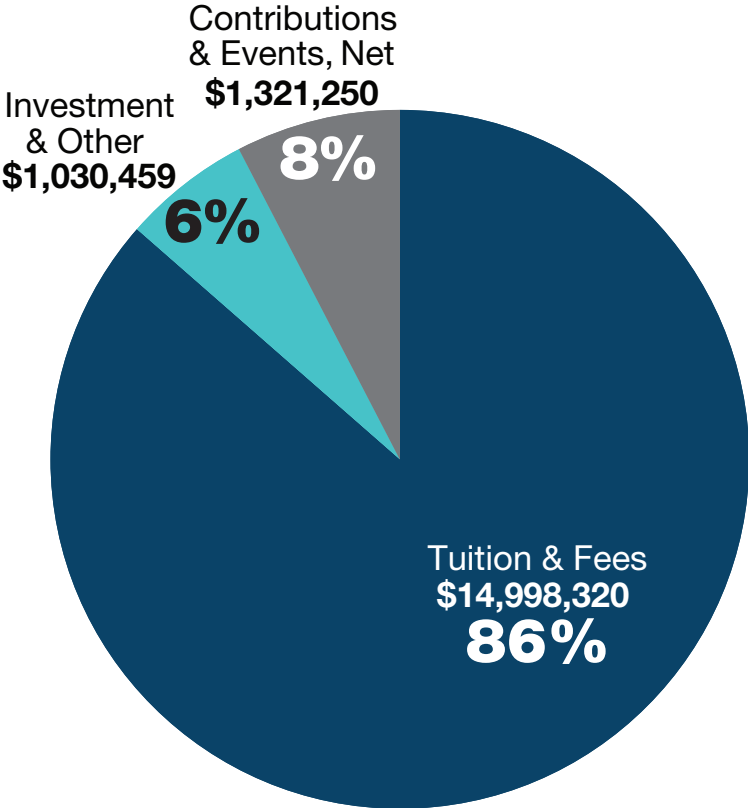
Warmest regards,

A handwritten signature in black ink that reads "Jean Armstrong". The signature is written in a cursive, flowing style.

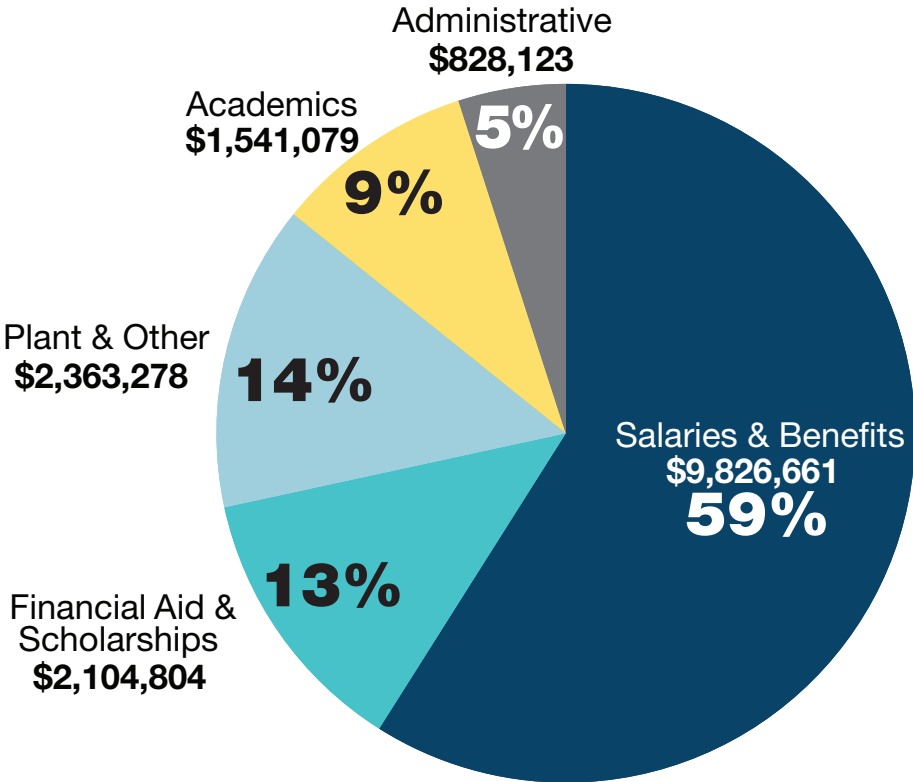
Jean Armstrong
Board Chair

Financials

INCOME



EXPENSES



“

SMA was an amazing experience for both our children, with supportive and caring teachers and principals throughout their academic trajectories. We loved the ethnic and economic diversity that makes up the SMA community.

”

~ SMA Parent



SMA Community Comes Together, Breaks Records

ANNUAL FUND

\$483,044
record amount and
18% increase over
five years

100%
Faculty & Staff
Participation!

COLORADO GIVES DAY

\$230,244
in support of various
SMA funds.





2020 SMA
“That '70s”
Virtual Gala

SIMMARY'S
ACADEMY

Friday, April 24, 2020
7:30 - 8:45 p.m.

TITLE SPONSOR
pulsar360
Advanced VoIP & Telecom Solutions
Bob Harrison #254

GALA FUNDRAISER

\$400,000
record amount and
35% increase over
five years

HOPPER FAMILY GOLF TOURNAMENT

\$78,491
record amount and
33% increase over
five years

TOTAL DONORS

1,031 total donors
216 NEW donors



Seven Years of Capital Improvements

High School Forum

Total renovation of assembly and performance space
Air Conditioning



New 23,000 Square Foot Building; Duncan Commons

Lunch room
Classroom spaces
Offices



New High School

A 30-year roof installed on north and south ends

2013

2014

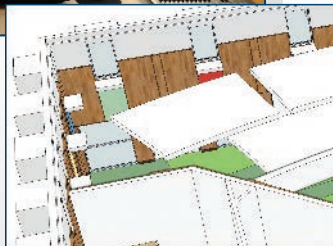
2015

2016

2017

2018

2019



EXISTING CUBBIES
12' X 48'

PARENT SIGN IN/OUT SHEET ON TOP?



Pam Bent Field

New Multi-Sport Nike Grind Turf Field, the first in Colorado, a \$250,000 investment

Bishop Evans Sports Center

New Automated Bleachers



High School

New Lockers



Since our founding in 1864, St. Mary's Academy has been blessed with a caring and generous community. Our Cherry Hills Village campus has grown from one building in 1951 to five buildings, fields, playgrounds and landscaping on our beautiful 24-acre campus.

Our Community Center Capital Campaign kicked off May 2013, and by May 2019, more than \$8M was raised, the biggest capital fundraiser in the Academy's history.

Celebrate the results!



Roof
Completed on the
south side of building

Landscape Master Plan

Phase I



**New Middle School
Playground Upgrades**
**Lower School
Playground Upgrades**

MAIN STAIR

Lower School Inspiration Lab

Converted a 1,000 square foot basement storage space into a lofty space for STEAM and Robotics.

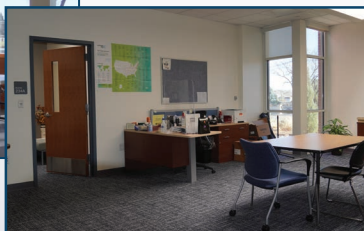


2019

2020

East High School Wing

Renovation of East Classrooms/Hallways
New Café
New Outside Patio
New College Counseling Area
Air Conditioning in this Space



Lower School

Complete re-carpet of classrooms and hallways
New hard surface flooring



New Playground

Replaced old artificial turf
Added a new area of artificial turf





Impact on Innovation

Across the St. Mary's Academy community, students, teachers and parents agree: students aren't taught what to think; they are taught how to think. This pervasive approach makes SMA students uniquely positioned to be changemakers, with a deep sense of their potential and purpose. They are who the world needs.

So it comes as no surprise that when our divisions have been charged with making the best use of the Annual Fund, they have deployed donations in ways that will meet those challenges head on. That's called impact.

Turning Challenge Into Positive Change

For Karen Smith, Lower School Principal, that meant utilizing funds in 2019/20 to complete a STEAM space called the Inspiration Lab and acquire a powerful new math program.

The Inspiration Lab was the brainchild of Missy McConnell, Media Specialist, and Kelly Mansfield, Art Teacher, in 2017 when they saw the potential of converting a Lower School basement space into an environment that fostered design thinking, where empathy and understanding of a problem lead to innovative solutions. A once-messy maker space has transformed into a highly functional place where the Lower School teachers challenge students to explore, experiment, design, critique,

refine, and make prototypes. Woodworking, digital design, a 3D printer and green screens for video production make it possible.

"The Inspiration Lab is an environment where students can think outside the box and work collaboratively, uninhibited," says Principal Smith.

STEAM spaces like the one at SMA have been shown to benefit students at all levels of ability, creating a truly inclusive community. STEAM activities also foster individual resilience and responsible participation skills.

Many students don't want to leave the lab, and they don't have to. SMA students take the challenge after school, with Robotics Club and a Tinker Club in the lab.

Forward-thinking minds landed on the Lower School's new math curriculum at a time that Principal Smith calls "fortuitous" in light of the COVID-19 environment. Every concept in the enVision 2020 math program has self-tutorial and digital components that teach and reteach concepts. So students learning on campus or remotely from home can make efficient progress. Many of the tasks are "adaptive," meaning that the lesson is adjusted for the ability of the learner at the moment. The program, paid for in part by the Annual Fund, receives top rating for teaching concepts through problem-based instruction, small-group interactions, and visual learning with a focus on reasoning and modeling.

Middle School Gets SMART

At St. Mary's Academy, putting the big hearts of the Middle School students into purposeful action is smart, with capital letters. SMART stands for Seminars, Music, Art, Recreation and Theatre, where grade 6 students get a taste of each branch on their way to discovering their passions that will come to fruition with thesis projects in grade 8.

An example of one is underway: a team of students is designing a shoe that will light up and vibrate for persons with loss of hearing or sight. A 3-D printer and the support of Kathy Rosborough, Science and Robotics teacher, will lead to a prototype.

These kinds of real world solutions come from the design thinking approach that runs across the St. Mary's Academy campus, where service learning is carried out into real-life applications. For the Middle School, much of the work will take place in a renovated multi-purpose room under development since 2018. This year, the Annual Fund will support equipment for multimedia production and other hands-on tools.

Jason Jung, Fine Art and Multimedia Teacher, recognizes the potential of the Middle School students for developing deeper skills across disciplines when they discover a passion through SMART. For example, photography spurs a greater interest in mathematics, theatre in storytelling, and lighting in science. "When a student finds what they love, they will pursue other disciplines that will help them with their passion," says Jung.

Middle School Principal Tiffany Drees is greenlighting use of the Annual Fund for the fully-outfitted studio and workspace. "Taking knowledge from the classroom and applying it in real world ways is vital for students," she says.

The Loretto School Values of faith, community, justice and respect will play a large role in the kinds of pieces students produce. Ms. Drees envisions use of the space for students to tell their stories and to "give voice" to the stories of others that have not been told.

"With so many schools cutting out the arts, we are in the unique position to give our students the arts in far-reaching ways," says Ms. Drees. It's call time for the agents of change.





“This Is Going To Be SMA’s Finest Hour”

Iswari Natarajan, High School Principal, perceives the challenges presented by COVID-19 as giving administration, faculty and staff a “mindset of reimagining and reinventing ourselves.” She says that the remote learning in spring 2020 made the work of teachers more intentional, so that time together in the classroom will be even more valuable. In many cases, this means the introduction of new technology that will close the gap between campus and home and a gap in equity magnified by the pandemic. The Loretto School Values provide inspiration in these times.

“All our faculty is willing to embrace change, because they see so much value in community,” says Ms. Iswari. The entire faculty embarked on a digital curriculum last year and training with Swivl robotic live streaming technology in the summer so that students could attend school through our flexible new remote learning, an always option that will keep them socially connected no matter how physically distanced.

Ms. Iswari sees these times as an extraordinary opportunity to innovate. The 2019-20 Annual Funds produced fast-forward momentum for SMA. They were used for a high-tech Maker Space hand built by former SMA teacher Dave Gesler, home to a burgeoning SMA Robotics program he began.

Now the idea is picking up steam. Plans are underway for an entire interdisciplinary STEAM wing. This would include renovation of science labs in the lower level of the High School and equipment innovations. And, science teachers will be outfitted with GoPro cameras to capture the dynamics of science and engineering labs for students learning remotely.

Past annual funds have also paid for STEAM curriculum. In two years, SMA introduced its first four computer science courses, including AP Computer Science and AP Computer Science Principles.

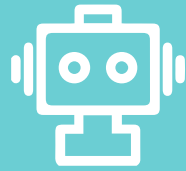
“Computer Science is a new science that is intrinsically part of life. It was missing here,” said Ms. Iswari. The courses are regularly enrolling 15 - 18 students each term, working in Scratch, Python and Java.

The arts program at SMA was also fortified in 2019-20. It now offers three AP arts classics, including AP Ceramics and college portfolio preparation.

With all the innovation to prepare faculty and students for the changing times, equity remains top of mind for Ms. Iswari, who wanted to make sure that SMA can provide support for families facing hardship due to the coronavirus. Annual funds were tapped for families who needed assistance getting Wi-Fi in their homes, or help purchasing equipment like calculators since supplies cannot be shared this year. The entire community will move forward with progress and purpose.

Far-reaching Impact of Annual Funds

Annual funds covered all or part of the costs of fundamental improvements across divisions and departments. *Thank you for your support!*



Student Success

- Envision Math 2020 curriculum for Lower School
- Leveled reading library for Lower School
- Robotics fabrication equipment, Lego expansion sets, and docking stations.
- Grammarly licenses in High School
- In-house, on-line SAT/ACT test prep added to Naviance account
- Sources of Strength partnership for student wellness
- Diversity, Equity, and Inclusivity training



Visual and Performing Arts

- Large Curtain for Forum stage
- Sound equipment for HS forum
- Touch-screen illustration monitors for digital art



Academy Parents Special Events and Snacks



Technology

- Apple TVs in Lower School classrooms
- Camera system for Pam Bent Field and Bishop Evans Sports Center



Teacher Appreciation



Athletics

- New uniforms for golf, tennis, JV soccer and volleyball programs
- Reversible uniforms for Middle School students
- Updated weight room equipment



President's Discretionary Fund

Every year, the Annual Fund contains a budget called the "President's Discretionary Fund." The President of the Academy receives the budgeted amount at the end of each school year, along with any amount raised that exceeds that year's goal. The President can then utilize the donated funds in a flexible manner based on the school's most pressing needs.

COVID-19 Reopening Support

This year, the President's Discretionary Fund provided essential resources for reopening under COVID-19 conditions. These community health safeguards included:

- Sterilization equipment and supplies
- Hand sanitizer and dispensers
- PPE masks and gloves
- Campus public health signage
- Infrared Temperature Devices
- Classroom furniture for social distancing
- Plexiglass shields for teacher and student tables
- Installation of the Health Hub
- Additional health aide staff
- Additional cleaning staff





Swivl Streaming Connects School to Home

St. Mary's Academy was committed to coming back together as a community after COVID-19 stay-at-home orders, while giving families an option upon reopening to learn from home in an immersive experience that emulated being in the classroom. Thanks to the very generous support of parent benefactors, St. Mary's Academy has been able to introduce live-streaming Swivl technology across campus to address the pandemic challenges and to set the stage for future teaching and learning innovations.

Swivl is a robotic technology that works with an iPad camera and multiple microphones to bring remote learners into the classroom via Zoom. Mounted with an iPad's camera, Swivl turns 180° degrees to the left and right, tracking with the teacher's movements. Several microphones in the room amplify the sound for learners, who can also interact with the class with the help of a class buddy.

It was installed in every St. Mary's Academy classroom over the summer of 2020, when teachers trained on it with the help of SMA graduate Jisoo Lee and the IT department.

About 50 students started back to school with the Swivl option, a number that tripled by family choice at points during the fall.

"It follows the teacher around and it is easier for me to hear them, which helps me a lot," said High School student Ilana Velmurugan.

The technology has also allowed SMA to continue to deliver its robust academic program during required quarantine periods in the 2020-21 school year.

Endowment Fund

The Endowment Fund, held in trust and invested in perpetuity, is a fund that will help assure the future of St. Mary's Academy. A gift to the endowment is a gift to the community of St. Mary's Academy and an assurance that our legacy will continue to be available to our youth far into the future. Our total endowment as of June 30, 2020 is \$13,168,292.

St. Mary's Academy wishes to acknowledge the following donors who have established named endowment funds:

Academic Funds

The Maureen DeMarco Endowed Award **\$11,097**

Established in 1997 with gifts in memory of Maureen DeMarco, who was a Spanish teacher at SMA until her untimely death in 1996. This fund provides an annual award to a student who demonstrates a passion for Spanish.

The Alney A. Norell **\$5,926**

Established in 2004 from the estate of Alney Alba Norell '23. This fund provides support for an annual poetry contest in memory of Alney's grandmother, Louisa-Euen (Grogran) Hicks.

Financial Aid Funds

The Carr Family Endowed Financial Aid Fund **\$678,088**

Established in 2007 by William and Gracie Carr, parents of Rebecca Carr '98 and Johanna Carr '10, this fund supports diversity and fulfillment of the Loretto Mission.

The Kathleen Crowley Endowed Financial Aid Fund **\$69,276**

Established in 2008 by Kathleen A. Crowley '62, the fund supports students of alumnae, if appropriate.

The Regina Tynan Karr Endowed Financial Aid Fund **\$4,747**

Established in 1993 by Sheila Karr '73, the fund honors her mother, Regina Tynan Karr '35.

The Cristi Lippert Lundquist Endowed Financial Aid Fund **\$17,148**

Established in 2009 by Cristi Lippert Lundquist '77.

The Mary Armstrong McMahon Endowed Financial Aid Fund **\$27,941**

Established in 1997 by Peggy McMahon '63 J.D. and Nancy McMahon '65 Psy.D. in memory of their mother, Mary Armstrong McMahon.

Kathryn McNamee Named Endowment **\$51,189**

Established in 2017 by Kathryn McNamee, MSMAC, to support students at St. Mary's Academy who exhibit leadership, scholarship, and the Loretto School Values.

The Helena O'Brien Murray Endowed Financial Aid Fund **\$44,192**

Established in 1997 by Catherine Murray Henemann '46, Betty Murray Murphy '49 and Adele Murray De Line '54 in memory of their mother, Helena Murray '23.

The Robert and Edith O'Connor Endowed Financial Aid Fund **\$7,259**

Established in 2010 by Edith O'Connor, the fund honors her grandchild, Shannon Danahey '07.

The Pardee Family Endowed Financial Aid Fund **\$43,648**

Established in 2009 by William and Maria Pardee, parents of Caroline Pardee '07 and Hanna Pardee '13, to support High School students.

The Eleanor Diss Sabin M.D. Endowed Financial Aid Fund **\$45,241**

Established in 2010 by Mary Martha Diss Sundby '72 in memory of her late sister Eleanor Diss Sabin, M.D. '76. A Marion Award winner, Eleanor returned to SMA to coach the first state tournament basketball team. The fund supports children of inner-city parochial schools.

The Schlessman Family Endowed Financial Aid Fund **\$131,861**

Established in 1996 by Carol Mansfield Schlessman '76 and her husband Gary Schlessman, parents of Jennifer Schlessman '00 and Megan Schlessman '03. The fund supports children of alumnae, if appropriate.

The Sister Susan Swain Endowed Financial Aid Fund **\$139,353**

Established in 2012 by the St. Mary's Academy Board of Trustees, Michael Duncan, Chair, in memory of Susan Swain SL. Sister Susan was principal of St. Mary's Academy Lower School from 1987-2002 and served on SMA's Board of Trustees from 2004-2012. This fund supports Lower School students.

Sisters of Loretto Endowment **\$12,804**

Florence Swanson Named Endowment **\$11,891**

Established in 2019 with gifts in loving memory of Florence Swanson, Lower School Principal from 2015 – 2018. This fund supports student Lower School students.

Faculty Funds for Professional Development

The Cantwell-Ray Family Endowed Fund for Lower School Faculty Professional Development **\$71,054**

Established in 2001 by Dale Cantwell and Pamela Ray, parents of Amelia Cantwell-Ray '06 and Elizabeth Cantwell-Ray '10.

Simon and Lanig Family Endowed Fund for Lower School Faculty Professional Development **\$36,409**

Established in 2004 by Mark A. Simon and Indira S. Lanig, M.D. in honor of the St. Mary's Academy Community parents, teachers and community leaders working as a team to develop our children into citizens of the world.

**The Edward E. Ford Foundation
Endowed Fund for High School Faculty
Professional Development \$155,346**

Established in 2001 with a grant from the Edward E. Ford Foundation and matching funds from members of the SMA community.

**The Schotters Family Endowed Fund for Middle
School Faculty Professional Development \$122,099**

Established in 1999 by Barney and Nancy Schotters, parents of Middle School graduates Payson Schotters '98 and Kin Schotters '00.

The Trueblood Family Endowment \$74,011

Established in 1999 with a gift from John Trueblood, the fund honors his father, Harry Trueblood, and supports faculty professional development.

General Endowment Funds

General Endowment funds support general operating needs of the Academy unless otherwise specified.

The Judith Dillon Baenen Endowment \$400,887

Established in 2006 with gifts from throughout the SMA Community in honor of Judith Dillon Baenen '57, President of St. Mary's Academy from 1993-2006. This fund was designated to the general endowment of St. Mary's Academy to support general operating needs of the school.

The Pam Bent Endowment \$1,414,754

Established in 2017 by Pam Bent, former faculty member and lacrosse coach, via her estate. Annually, 50% of the income of this fund is to be used for athletic facilities and athletic programs and the remaining 50% of the income may be used as St. Mary's Academy determines.

The Bent Family Endowment \$274,659

Established in 2004 by Pam Bent, former faculty member and lacrosse coach, and her family in honor of Judith Dillon Baenen '57, President of St. Mary's Academy, 1993-2006.

**The Wayne T. "Dusty" Biddle Memorial
Endowment Fund \$267,029**

Established in 2009 with a gift from Jeffrey and Cate Cain Pagliuca, parents of Megan Pagliuca '99, Beth Pagliuca '07 and James Pagliuca MS '05.

The Cain Family Endowment \$26,652

Established in 2009 with a gift from Jeffrey and Cate Cain Pagliuca, parents of Megan Pagliuca '99, Beth Pagliuca '07 and James Pagliuca MS '05.

The Carr Family Endowment \$40,987

Established in 2006 with a gift from William and Gracie Carr, parents of Rebecca Carr Davis '98 and Johanna Carr '10. This fund provides support for Middle School-aged girls to participate with St. Mary's Academy teams in the Gold Crown basketball program.

The Castle Family Endowment \$12,859

Established in 2008 by Sean and Shara Castle, parents of Maddie Castle '18.

The Deirdre V. Cryor Endowment \$30,226

Established in 2016 with gifts from the Board of Trustees and other SMA Community Members, this fund honors Deirdre V. Cryor, President of St. Mary's Academy from 2006-2016. The fund is designated to support the general operating needs of the SMA Community Center, which was built during Deirdre's tenure.

The Jeanette Smith Eppler Endowment \$14,735

Established in 2013 with a gift from Gretchen Eppler and Pete Titsworth, parents of Calvin Titsworth MS '08.

**The Philip A. Hastings, Jr.
Memorial Endowment \$27,567**

Established in 2006 with gifts from Stephanie Hastings and Kathleen and Richard Van Dorn in loving memory of Philip A. Hastings, Jr.

The Jones Family Endowment \$17,637

Established in 2008 by William "Billy" and Kim Jones.

**The Masters Family Endowment for
Performing Arts \$71,045**

Established in 2006 by Jerry and Amy Masters, parents of Emily Masters '09, the fund is designated to support the various performing arts activities of St. Mary's Academy.

The Mitchell Family Endowment \$55,371

Established in 2004 by Victor and Amy Mitchell in honor of their children Lauren Mitchell '12, David Mitchell, and Emily Mitchell MS '02.

The O'Rourke Family Endowment Fund \$46,408

Established in 2004 by Chris and Renee O'Rourke, parents of Kerry O'Rourke '15, in memory of mother, Patti O'Rourke, and their sister, Peggy O'Rourke.

The Rasmussen Family Endowment \$213,132

Established in 2004 by Walter and Nijole Rasmussen in honor of Walter's father, Wallace N. Rasmussen.

The Margaret M. Reinert Endowment Fund \$74,939

Established in 2011 from the estate of Margaret M. Reinert '47.

The Schaffer Family Endowment \$15,182

Established in 2009 by Brett and Louisa Schaffer, parents of Samantha Schaffer '17, Josie Schaffer '19 and Raquel Schaffer '21.

The Swain Family Endowment \$59,491

Established in 2005 by Sisters of Loretto Mary and Susan Swain in honor of their parents Harry and Helen.

The Swensen Family Endowment Fund \$21,536

Established in 2008 by Steve and Kris Swensen, parents of Kelli Swensen '09.

The Joseph H. Thompson Endowment \$45,850

Established in 2009 by Brad and Mary Talbot, parents of Betts Talbot '13

**The Patricia C. Tisdale Memorial
Endowment Fund \$65,209**

Established in 2004 with gifts in loving memory of Pat Tisdale, former Board Chair (1991-1994) of St. Mary's Academy and mother of Sara Tisdale '95, Maggie Tisdale '00, Vicki Tisdale '04, and Doug Tisdale, former Lower School student teacher.



Community of Giving

Loretto Legacy Society

All generous donors who inform us of their plans to include St. Mary's Academy in their will or estate plan will become members of St. Mary's Loretto Legacy Society. We are grateful to our twenty-five current members.

Charlie & Theresa Arbogast
Judith Dillon Baenen '57
Dusty & LaFawn Biddle
Deirdre Cryor
Timothy & Katherine Farrell
Lauren Fisher
Stephanie Goodrich '87
Jim & Darlene Graham
Carol Haller
Bob and Brenda Harrison
Barbara Hennigar
Norma Phillips Lammers '61
Mary Ann Brannan Lipton ' 46

Cristi Lippert Lundquist '77
Nina Ehrlich McCaskill '02
Kathryn McNamee
Jay & Liz Mellick
Alney Allbritten Norell '23
Claire O'Neal '75
Mary Sweeney Parlin '65
Dena Johnson Pinsker '79
Carol Mansfield Schlessman '76
Anita Figueras Stricoff '64
Mary Martha Diss Sundby '72
Mike and Meg Tobler



Loretto
Legacy
SOCIETY

FAITH COMMUNITY
JUSTICE RESPECT



The Emcee of our Mission!

Thanks to Charlie Arbogast for 23 Years

“Beyond the money he raised and the events he orchestrated, Charlie’s real legacy is the positive impact he made on our community. Charlie gave his heart to SMA, going the extra mile to make people feel special and bringing joy to everything he did for this school. I know I am one among many who is a better person for knowing him.”

~ Katie Wheeler

“Charlie is a good man, period. He gave his all to SMA. He is thoughtful, kind and generous.”

~ Peter Snięowski

“Charlie always made every single person on and off this campus feel seen and appreciated, a gift that the people in our SMA community showed their appreciation for by making meaningful contributions to our school.”

~ Lillian Forward

“The positive impact that Charlie’s years of service had on SMA is immeasurable. He truly was an icon for our community.”

~ Julie May

“Charlie put the FUN in FUNdraising and development for St. Mary’s Academy for so many years. He has been a thoughtful steward of SMA’s resources, a tireless leader who lives the Loretto Values, and a loyal friend to the entire SMA community.”

~ Michael Williams

“Charlie’s warmth and compassion extended well into the SMA community. Our entire family was so touched when he showed up at the funeral services for our mother, our father, and our sister, Eleanor Diss Sabin, M.D. ‘75. And he brought others with him.”

~ Martha Diss Sundby ‘72



My friendship with Charlie goes way back, so of course the memories do, too. As Director of Advancement, he has successfully enhanced the mission and image of SMA! The only time I challenged his wisdom was when he considered leaving St. Mary’s and return to a former career. I gave him a bad time and eventually he agreed to stay with us.

Our daughter, Barbie, and her three children were SMA students and as adults they are all thriving, thanks to the foundation they built at St. Mary’s Academy. They, too, enjoyed the personality Charlie shared with students, as well as staff and faculty.

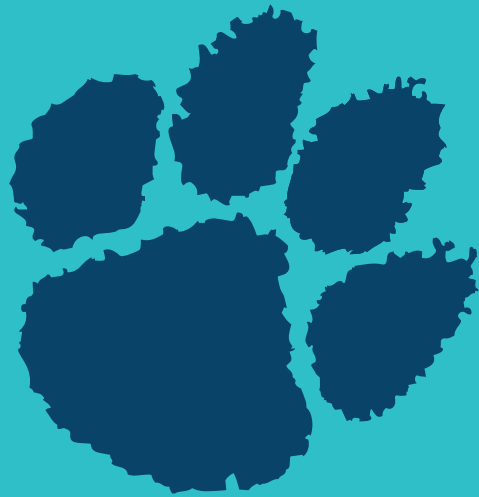
I was privileged to serve on the SMA Board of Directors and even became the first lay President of the Board. In that capacity, I was able to work closely with Charlie on many projects. He certainly knew how to inspire teamwork!

“You will be missed, Charlie — but this time I applaud your future as you leave SMA.”

Fondly,

LaFawn Biddle







Campus gains from
**CAPITAL
CAMPAIGN**

ST. MARY'S ACADEMY

FAITH COMMUNITY JUSTICE RESPECT

4545 South University Boulevard
Englewood, CO 80113-6059

stmarys.academy

Non-profit
US Postage
PAID
Denver, CO
Permit #353