

When does the Forward Exam take place?

The Forward Exam will be given in schools between March 22 and May 14, 2021. Schools are permitted to select their own testing dates within this window.

What type of scores will be provided?

The Forward Exam is a summative assessment that provides information about what students know and can do in relation to the Wisconsin Academic Standards. Students receive a score based on their performance in each content area. Each score will fall in one of four levels:

- **Advanced** – Student demonstrates **thorough** understanding of and ability to apply the knowledge and skills for their grade level that are associated with college content-readiness.
- **Proficient** – Student demonstrates **adequate** understanding of and ability to apply the knowledge and skills for their grade level that are associated with college content-readiness.
- **Basic** – Student demonstrates **partial** understanding of and ability to apply the knowledge and skills for their grade level that are associated with college content-readiness.
- **Below Basic** – Student demonstrates **minimal** understanding of and ability to apply the knowledge and skills for their grade level that are associated with college content-readiness.

Where can I find sample or practice test questions?

An Online Tools Training (OTT) and practice items are available for students at <http://dpi.wi.gov/assessment/forward/sample-items>. The OTT gives students the opportunity to practice using the tools available on the Forward Exam, as well as allow them to familiarize themselves with the testing platform. The Item Samplers include a sample of the type of content and items students will encounter on the exam. The OTT and Item Samplers are not scored, and do not cover the full range of content on the exam. These are intended to provide examples of items and give students practice taking an online test.

For more information contact the Office of Educational Accountability at osamail@dpi.wi.gov.



dpi.wi.gov/assessment/forward

August 2020

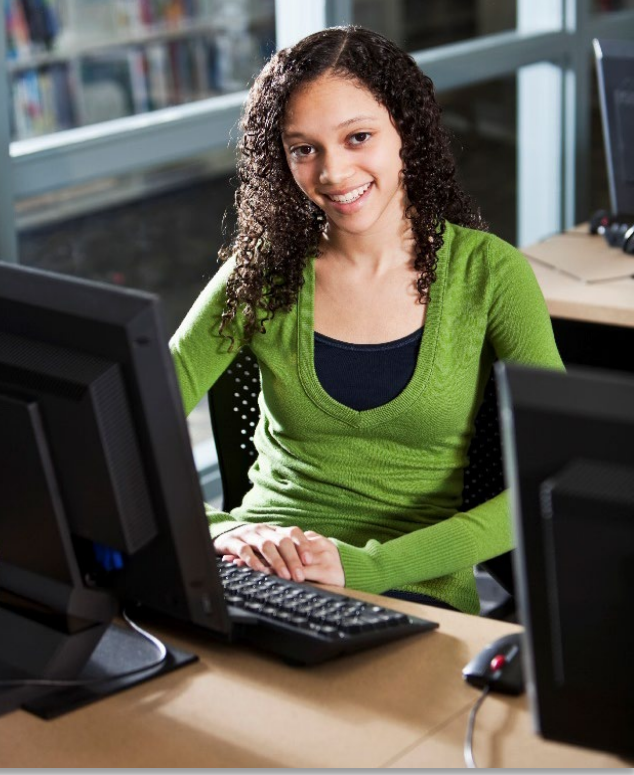
The Wisconsin Department of Public Instruction does not discriminate on the basis of sex, race, color, religion, creed, age, national origin, ancestry, pregnancy, marital status or parental status, sexual orientation, or ability and provides equal access to the Boy Scouts of America and other designated youth groups.



Wisconsin Forward Exam

Information for Families 2020-21





What is the Wisconsin Forward Exam?

The Wisconsin Forward Exam is designed to gauge how well students are doing in relation to the Wisconsin Academic Standards. These standards outline what students should know and be able to do in order to be college and career ready. The Forward Exam is administered online in the spring of each school year at:

- grades 3-8 in English language arts (ELA) and mathematics,
- grades 4 and 8 in science and,
- grades 4, 8, and 10 in social studies.

The Forward Exam includes several question types:

- **Multiple-Choice (MC)**
Question that has four answer choices, including three distractors and one correct answer.
- **Enhanced Selected Response (ESR)**
Question which may contain combinations of MC, short-answer, and technology-enhanced.
- **Evidence-Based Selected Response (EBSR)**
Question which has two parts. The student answers Part A, then provides evidence in Part B to support answer in Part A.
- **Text-Dependent Analysis (TDA)**
Question used on the ELA test. The TDA is a text-based analysis, based on a passage that is read by students during the assessment. In order to develop a comprehensive, holistic essay response, students must draw on basic writing skills while inferring and synthesizing information from the passage. Students have up to 5000 characters to formulate their response.
- **Technology-Enhanced (TE)**
TE questions allow for a more engaging, interactive assessment. A wide variety of TE questions are present on the Forward Exam including:
 - Clock Input
 - Angle Draw
 - Short Input
 - Bar Graph
 - Number Line

- Coordinate Graph
- Line Plot
- List
- Drag and Drop
- Drop-Down List
- Pictograph using Drag and Paste
- Circle Graph
- Matching
- Highlighting Text

Accommodations and supports for students with disabilities and/or English learners are built into the system so that the progress of students can be accurately measured.

What does this mean for my child?

The Forward Exam is a summative assessment that gauges your child's achievement in the content areas tested compared to other students in the state. Along with local measures such as report cards, school-wide assessments, and other information about your child's progress in school, the results from the Forward Exam provide insight into how well your child is doing on a broad measure of achievement.

What are the test times?

The estimated time for test administration in each grade is approximately:

- 70 minutes for ELA,
- 80-105 minutes for mathematics,
- 90 minutes for science, and
- 70 minutes for social studies.

These are estimated times, for the purpose of scheduling, as **the Forward Exam is not a timed test.**